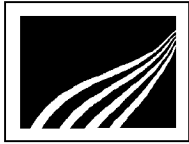


Appendix A

Engineering Documents



ROONEY ENGINEERING, INC.

12201 East Arapahoe Road, C-10, Englewood, CO 80112
(303) 792-5911

DOCUMENT TRANSMITTAL SHEET

PROJECT NAME: Bakken North Project

TRANSMITTAL DATE: October 25, 2011

CLIENT NAME: Plains All American, LP

CLIENT AFE NUMBER: 14933

TRANSMITTAL NUMBER: 02793-0114

TRANSMITTAL TO:
Plains All American
Mr. Mark Bordelon
124 N. State Street, Suite 200
Abbeville, LA 70510
(337) 898-0286

E3 Environmental, LLC
Mr. William McCarthy

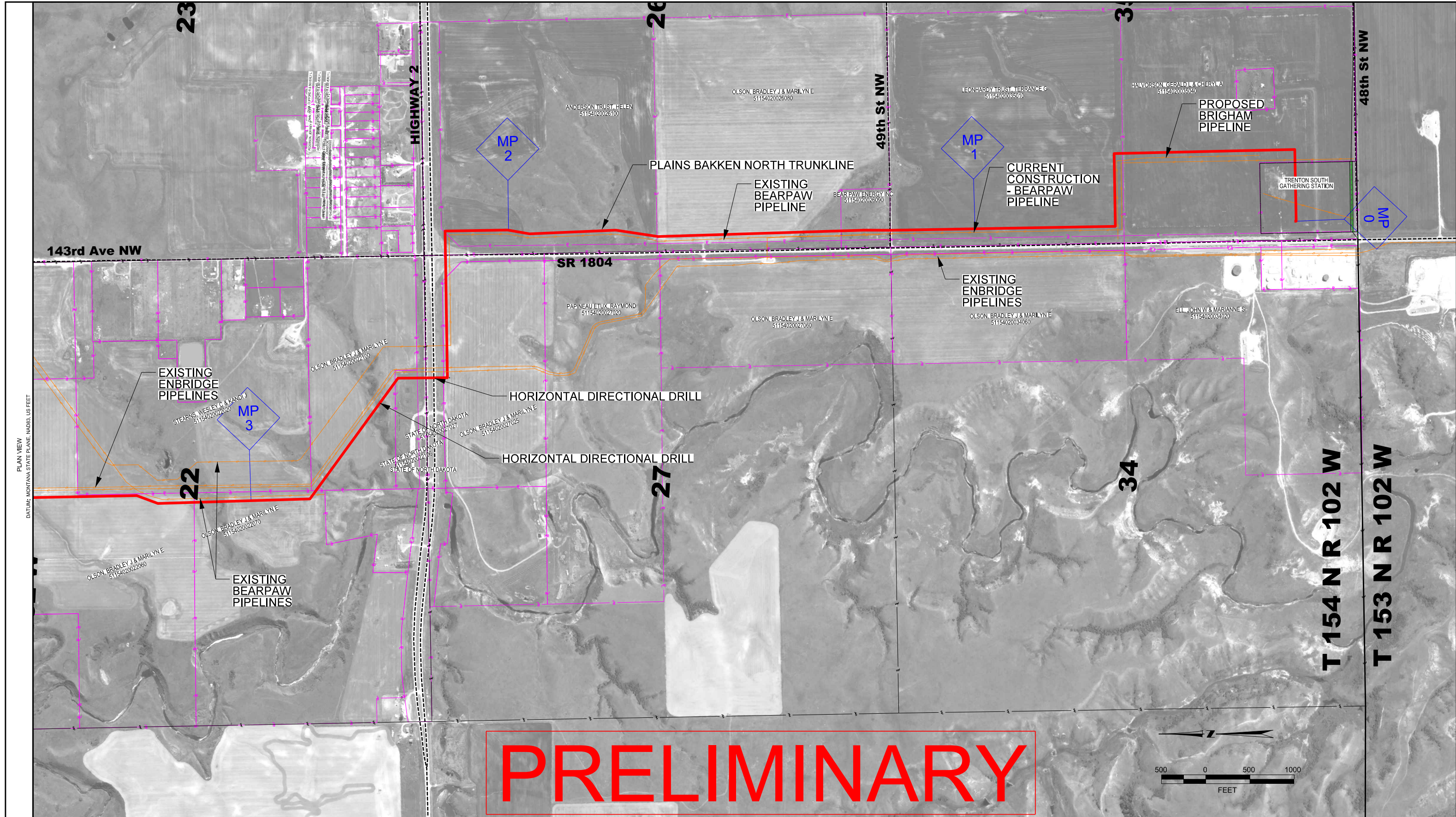
E3 Environmental, LLC
Ms. Katie Schmidt

TRANSMITTED VIA: Email

TRANSMITTAL FROM: Brian L. Techau

SHEET OR DRAWING #	REV #	DATE	# OF COPIES	DESCRIPTION
14933-M-0003	J	10/25/2011	1 Ea.	Bakken North Trunkline – Proposed Route Overview & Route Map Index - PRELIMINARY
14933-M-1101	G	10/12/2011	1 Ea.	Bakken North Trunkline – Proposed Route, Sheet 1 of 28 - PRELIMINARY
14933-M-1102	F	10/12/2011	1 Ea.	Bakken North Trunkline – Proposed Route, Sheet 2 of 28 - PRELIMINARY
14933-M-1103	G	10/12/2011	1 Ea.	Bakken North Trunkline – Proposed Route, Sheet 3 of 28 - PRELIMINARY
14933-M-1104	G	10/25/2011	1 Ea.	Bakken North Trunkline – Proposed Route, Sheet 4 of 28 - PRELIMINARY
14933-M-1105	F	10/12/2011	1 Ea.	Bakken North Trunkline – Proposed Route, Sheet 5 of 28 - PRELIMINARY
14933-M-1106	G	10/12/2011	1 Ea.	Bakken North Trunkline – Proposed Route, Sheet 6 of 28 - PRELIMINARY
14933-M-1107	G	10/12/2011	1 Ea.	Bakken North Trunkline – Proposed Route, Sheet 7 of 28 - PRELIMINARY
14933-M-1108	G	10/12/2011	1 Ea.	Bakken North Trunkline – Proposed Route, Sheet 8 of 28 - PRELIMINARY

SHEET OR DRAWING #	REV #	DATE	# OF COPIES	DESCRIPTION
14933-M-1109	G	10/12/2011	1 Ea.	Bakken North Trunkline – Proposed Route, Sheet 9 of 28 - PRELIMINARY
14933-M-1110	G	10/12/2011	1 Ea.	Bakken North Trunkline – Proposed Route, Sheet 10 of 28 - PRELIMINARY
14933-M-1111	G	10/12/2011	1 Ea.	Bakken North Trunkline – Proposed Route, Sheet 11 of 28 - PRELIMINARY
14933-M-1112	G	10/12/2011	1 Ea.	Bakken North Trunkline – Proposed Route, Sheet 12 of 28 - PRELIMINARY



NOTES	
LEGEND	
PROPOSED ROUTE	
EXISTING PIPELINES	
PARCEL LINES	
SECTION LINES	
TOWNSHIP/RANGE LINES	

PIPE SUMMARY							
FROM	TO	LN. FT.	TYPE	FROM	TO	LN. FT.	TYPE

PIPE SPECIFICATIONS		
FROM	TO	DESCRIPTION

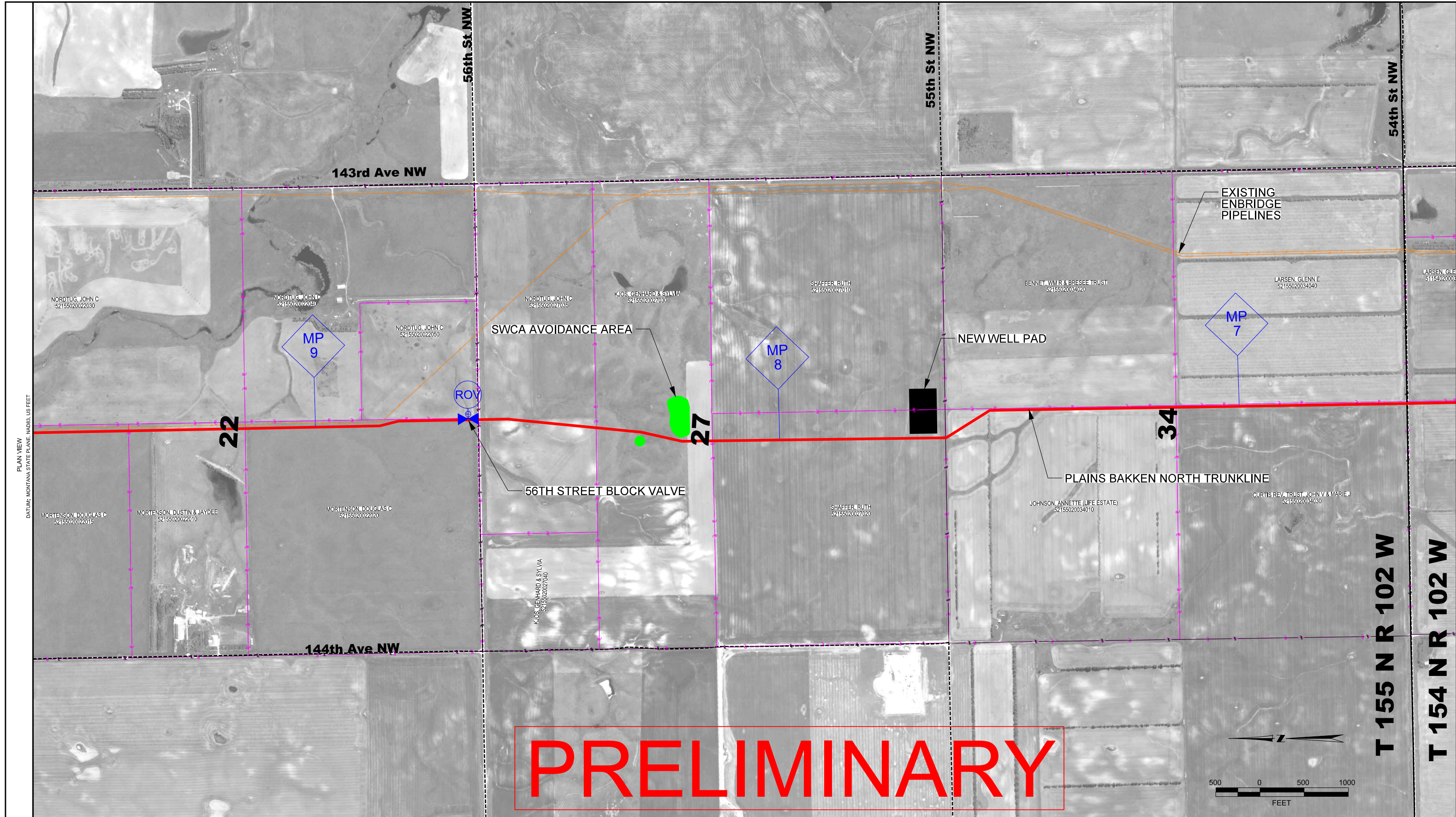
SPECIFICATIONS		REVISIONS				
WELDS:	X-RAYS:	REV. NO.	DESCRIPTION	DWN	CHKD	DATE
TEST PRESSURE:		A	ISSUED FOR REVIEW	TL	BT	03-14-11
M.O.P.:		B	ISSUED FOR REVIEW	TL	BT	04-15-11
CONST. START DATE:		C	ISSUED FOR REVIEW	TL	QB	05-03-11
CONST. END DATE:		D	ISSUED FOR REVIEW	TL	QB	05-17-11
FIELD BOOK	PAGES	E	ISSUED FOR REVIEW	TL	QB	06-15-11
		F	ISSUED FOR REVIEW	TL	QB	09-30-11
		G	ISSUED FOR BID	TL	QB	10-12-11

PLAINS
ALL AMERICAN
PIPELINE, L.P.

BAKKEN NORTH TRUNKLINE
PROPOSED ROUTE - 1 of 28
WILLIAMS CO., ND & SHERIDAN CO., MT

SCALE: AS SHWN DATE PROJECT NO. DRAWING NO.
DWN BY: TL 02-01-11 02793 14933-M-1101
CHKD BY: BT 02-01-11 REVISION: G
ENGR:

PREPARED BY: POLINER ENGINEERING, INC. / PLOTTED: DATE:



PRELIMINARY

NOTES	
LEGEND	
PROPOSED ROUTE	
EXISTING PIPELINES	
PARCEL LINES	
SECTION LINES	
TOWNSHIP/RANGE LINES	

PIPE SUMMARY				PIPE SPECIFICATIONS			
FROM	TO	LN. FT.	TYPE	FROM	TO	LN. FT.	TYPE

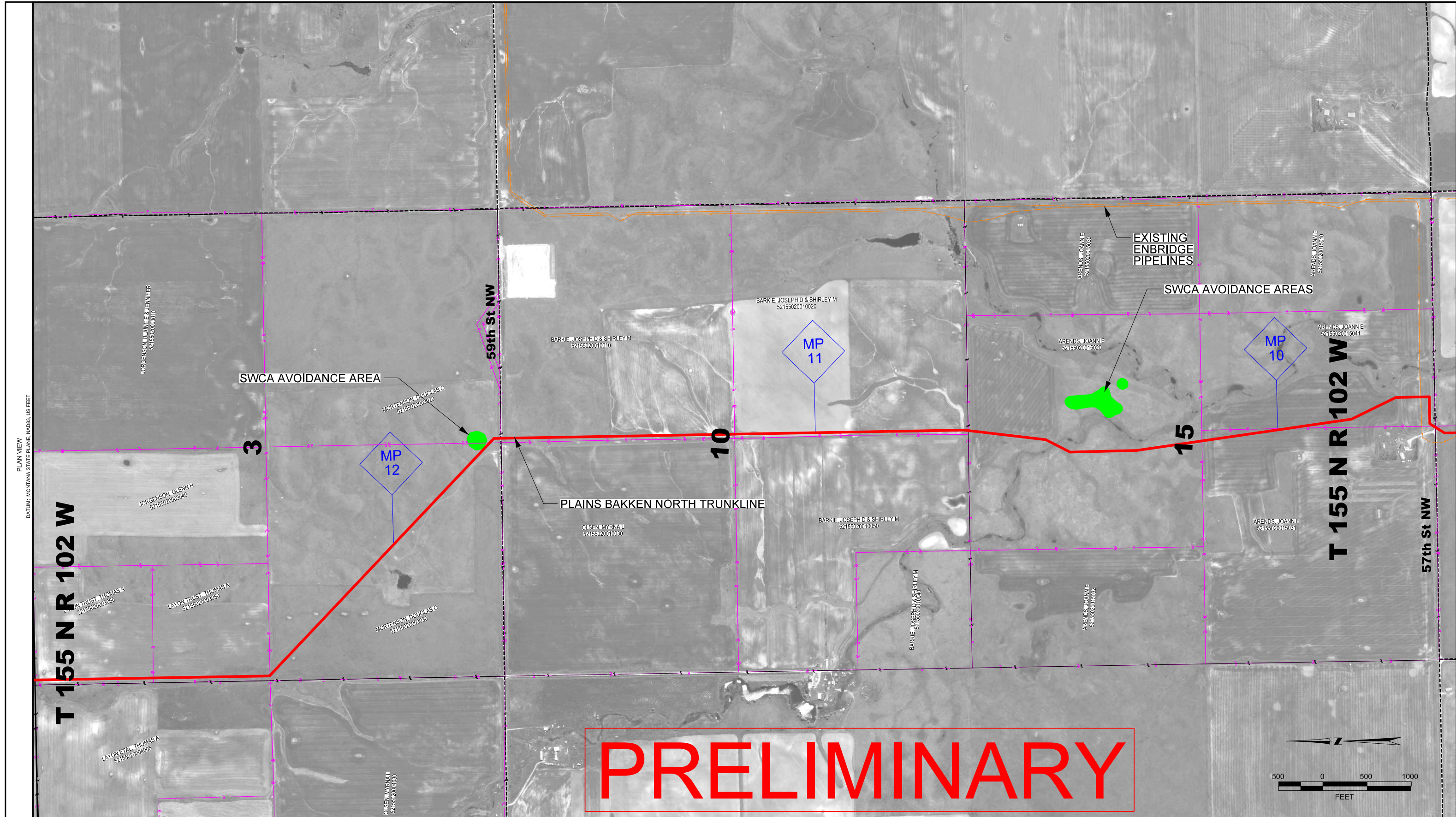
SPECIFICATIONS		REVISIONS				
WELDS:	X-RAYS:	REV. NO.	DESCRIPTION	DWN	CHKD	DATE
TEST PRESSURE:		A	ISSUED FOR REVIEW	TL	BT	03-14-11
M.O.P.:		B	ISSUED FOR REVIEW	TL	BT	04-15-11
CONST. START DATE:		C	ISSUED FOR REVIEW	TL	BT	05-17-11
CONST. END DATE:		D	ISSUED FOR REVIEW	TL	QB	06-15-11
FIELD BOOK	PAGES	E	ISSUED FOR REVIEW	TL	QB	06-29-11
		F	ISSUED FOR REVIEW	TL	QB	09-30-11
		G	ISSUED FOR BID	TL	QB	10-12-11

PLAINS
ALL AMERICAN
PIPELINE, L.P.

BAKKEN NORTH TRUNKLINE
PROPOSED ROUTE - 3 of 28
WILLIAMS CO., ND & SHERIDAN CO., MT

SCALE:	AS SHWN	DATE	PROJECT NO.	DRAWING NO.
DWN BY:	TL	02-01-11	02793	14933-M-1103
CHKD BY:	BT	02-01-11		
ENGR:				REVISION: G


PREPARED BY: POLINER ENGINEERING, INC. / PLotted: DATE




PIPE SUMMARY							
FROM	TO	LIN. FT.	TYPE	FROM	TO	LIN. FT.	TYPE

PIPE SPECIFICATIONS		
FROM	TO	DESCRIPTION

SPECIFICATIONS		REVISIONS				
WELDS:	X-RAYS:	REV. NO.	DESCRIPTION	DWN	CHKD	DATE
TEST PRESSURE:		A	ISSUED FOR REVIEW	TL	BT	03-14-11
M.O.P.:		B	ISSUED FOR REVIEW	TL	BT	04-15-11
CONST. START DATE:		C	ISSUED FOR REVIEW	TL	BT	05-17-11
CONST. END DATE:		D	ISSUED FOR REVIEW	TL	QB	06-15-11
FIELD BOOK	PAGES	E	ISSUED FOR REVIEW	TL	QB	09-30-11
		F	ISSUED FOR BID	TL	QB	10-12-11
		G	ISSUED FOR REVIEW	TL	BT	10-25-11







PLAINS ALL AMERICAN PIPELINE, L.P.

BAKKEN NORTH TRUNKLINE
PROPOSED ROUTE - 4 of 28
WILLIAMS CO., ND & SHERIDAN CO., MT

SCALE: AS SHWN	DATE: 02-01-11	PROJECT NO.:	DRAWING NO.:
DWN BY: TL	02-01-11	14933-M-1104	
CHKD BY: BT	02-01-11	02793	REVISION: G
ENGR:			

PREPARED BY: POLINER ENGINEERING, INC. / PLOTTED: DATE:



NOTES	
LEGEND	
PROPOSED ROUTE	
EXISTING PIPELINES	
PARCEL LINES	
SECTION LINES	
TOWNSHIP/RANGE LINES	

PIPE SUMMARY									
FROM	TO	LIN. FT.	TYPE	FROM	TO	LIN. FT.	TYPE	TYPE	

PIPE SPECIFICATIONS		
DESCRIPTION	LIN. FT.	

SPECIFICATIONS		REVISIONS				
WELDS:	X-RAYS:	REV. NO.	DESCRIPTION	DWN	CHKD	DATE
TEST PRESSURE:		A	ISSUED FOR REVIEW	TL	BT	03-14-11
M.O.P.:		B	ISSUED FOR REVIEW	TL	BT	04-15-11
CONST. START DATE:		C	ISSUED FOR REVIEW	TL	BT	05-17-11
CONST. END DATE:		D	ISSUED FOR REVIEW	TL	QB	06-15-11
FIELD BOOK	PAGES	E	ISSUED FOR REVIEW	TL	QB	09-30-11
		F	ISSUED FOR BID	TL	QB	10-12-11

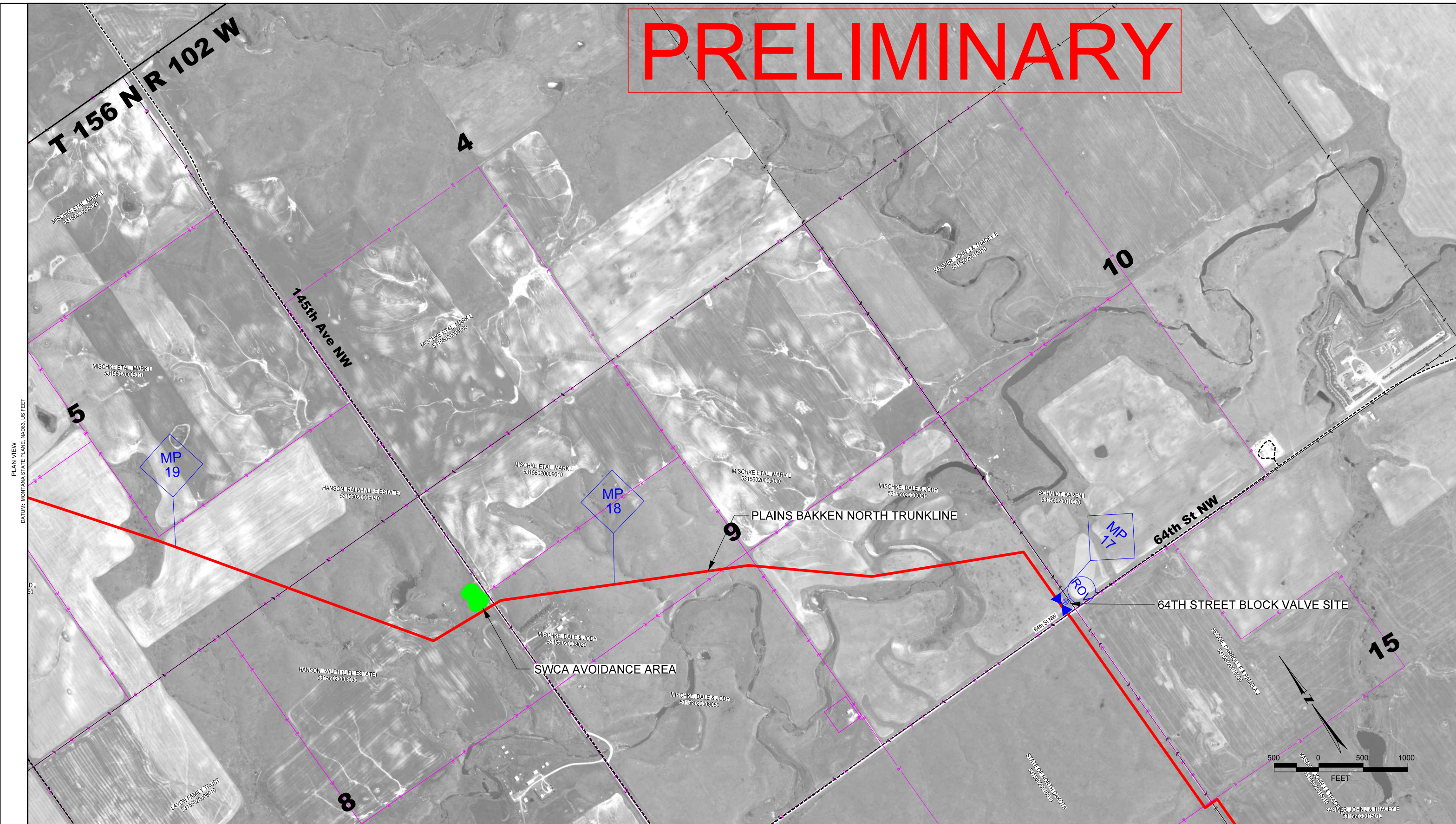
PLAINS
ALL AMERICAN
PIPELINE, L.P.

BAKKEN NORTH TRUNKLINE
PROPOSED ROUTE - 5 of 28
WILLIAMS CO., ND & SHERIDAN CO., MT

SCALE: AS SHWN DATE PROJECT NO. DRAWING NO.
DWN BY: TL 02-01-11 02793 14933-M-1105
CHKD BY: BT 02-01-11 REVISION: F
ENGR:

PREPARED BY: POLINER ENGINEERING, INC. / PLOTTED: 02/01/11

PRELIMINARY




NOTES	
LEGEND	
PROPOSED ROUTE	
EXISTING PIPELINES	
PARCEL LINES	
SECTION LINES	
TOWNSHIP/RANGE LINES	

PIPE SUMMARY			
FROM	TO	LIN. FT.	TYPE

PIPE SPECIFICATIONS			
FROM	TO	LIN. FT.	TYPE

SPECIFICATIONS		REVISIONS				
WELDS:	X-RAYS:	REV. NO.	DESCRIPTION	DWN	CHKD	DATE
TEST PRESSURE:		A	ISSUED FOR REVIEW	TL	BT	03-14-11
M.O.P.:		B	ISSUED FOR REVIEW	TL	BT	04-15-11
CONST. START DATE:		C	ISSUED FOR REVIEW	TL	BT	05-03-11
CONST. END DATE:		D	ISSUED FOR REVIEW	TL	BT	05-17-11
FIELD BOOK	PAGES	E	ISSUED FOR REVIEW	TL	QB	06-15-11
		F	ISSUED FOR REVIEW	TL	QB	09-30-11
		G	ISSUED FOR BID	TL	QB	10-12-11

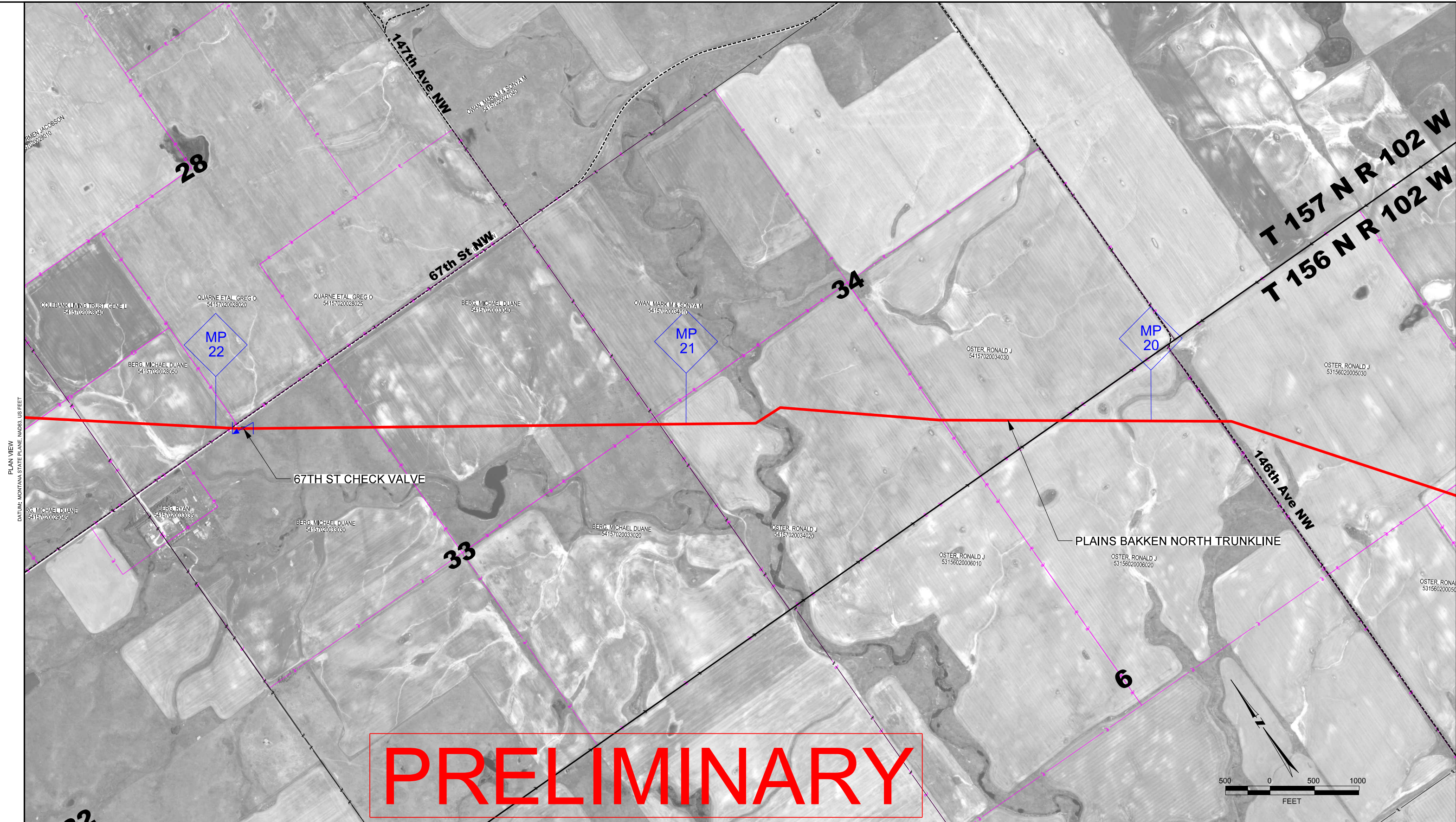


PLAINS
ALL AMERICAN
PIPELINE, L.P.

BAKKEN NORTH TRUNKLINE
PROPOSED ROUTE - 7 of 28
WILLIAMS CO., ND & SHERIDAN CO., MT

SCALE: AS SHWN	DATE: 02-02-11	PROJECT NO. 02793	DRAWING NO. 14933-M-1107
DWN BY: TL	DATE: 02-02-11		
CHKD BY: BT	DATE: 02-02-11		
ENGR:			REVISION: G

PREPARED BY: POLINER ENGINEERING, INC. / PLOTTED: DATE:



PLAN VIEW
DATUM: MONTANA STATE PLANE, NAD83, US FEET

NOTES	
LEGEND	
PROPOSED ROUTE	
EXISTING PIPELINES	
PARCEL LINES	
SECTION LINES	
TOWNSHIP/RANGE LINES	

PIPE SUMMARY							
FROM	TO	LIN. FT.	TYPE	FROM	TO	LIN. FT.	TYPE

PIPE SPECIFICATIONS		
FROM	TO	DESCRIPTION

SPECIFICATIONS	
WELDS:	X-RAYS:

REVISIONS			
REV. NO.	DESCRIPTION	DWN	CHKD
A	ISSUED FOR REVIEW	TL	BT
B	ISSUED FOR REVIEW	TL	BT
C	ISSUED FOR REVIEW	TL	BT
D	ISSUED FOR REVIEW	TL	BT
E	ISSUED FOR REVIEW	TL	QB
F	ISSUED FOR REVIEW	TL	QB
G	ISSUED FOR BID	TL	QB

PLAINS
ALL AMERICAN
PIPELINE, L.P.

BAKKEN NORTH TRUNKLINE
PROPOSED ROUTE - 8 of 28
WILLIAMS CO., ND & SHERIDAN CO., MT

SCALE: AS SHWN DATE: 02-02-11 PROJECT NO. 02793 DRAWING NO. 14933-M-1108

DWN BY: TL 02-02-11 CHKD BY: BT 02-02-11 ENGR: REVISION: G

PRELIMINARY

PRELIMINARY




PLAN VIEW
DATUM: MONTANA STATE PLANE, NAD83, US FEET

NOTES	
LEGEND	
PROPOSED ROUTE	
EXISTING PIPELINES	
PARCEL LINES	
SECTION LINES	
TOWNSHIP/RANGE LINES	

PIPE SUMMARY							
FROM	TO	LIN. FT.	TYPE	FROM	TO	LIN. FT.	TYPE

PIPE SPECIFICATIONS		
FROM	TO	DESCRIPTION

SPECIFICATIONS		REVISIONS				
WELDS:	X-RAYS:	REV. NO.	DESCRIPTION	DWN	CHKD	DATE
TEST PRESSURE:		A	ISSUED FOR REVIEW	TL	BT	03-14-11
M.O.P.:		B	ISSUED FOR REVIEW	TL	BT	04-15-11
CONST. START DATE:		C	ISSUED FOR REVIEW	TL	BT	05-17-11
CONST. END DATE:		D	ISSUED FOR REVIEW	TL	QB	06-15-11
FIELD BOOK	PAGES	E	ISSUED FOR REVIEW	TL	QB	06-29-11
		F	ISSUED FOR REVIEW	TL	QB	09-30-11
		G	ISSUED FOR BID	TL	QB	10-12-11



PLAINS
ALL AMERICAN
PIPELINE, L.P.

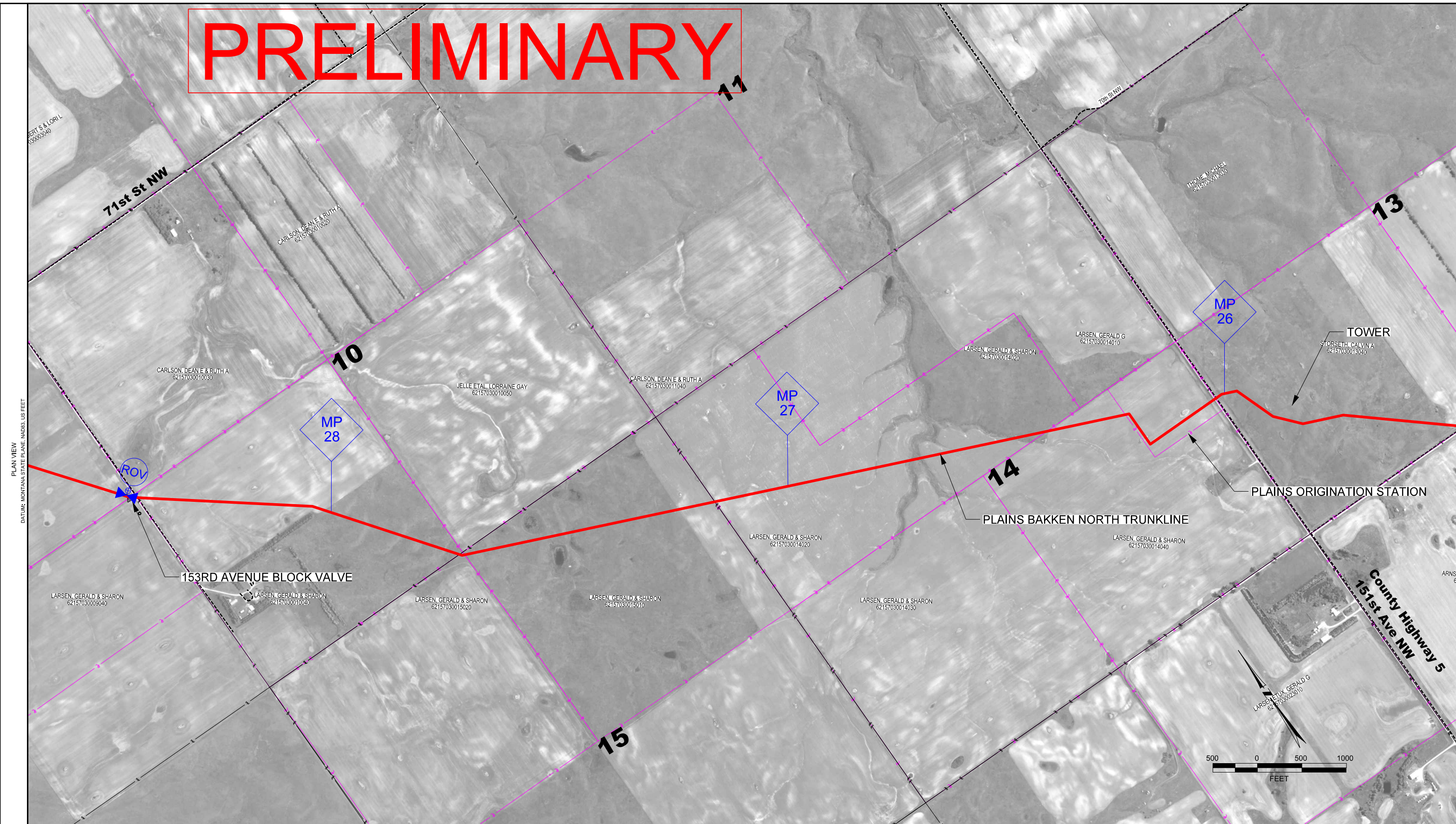
BAKKEN NORTH TRUNKLINE
PROPOSED ROUTE - 9 of 28
WILLIAMS CO., ND & SHERIDAN CO., MT

SCALE: AS SHWN DATE: 02-02-11 PROJECT NO. 02793 DRAWING NO. 14933-M-1109

DWN BY: TL 02-02-11 CHKD BY: BT 02-02-11 ENGR: REVISION: G

PREPARED BY: POLINER ENGINEERING, INC. / PLOTTED: DATE:

PRELIMINARY




PLAN VIEW
DATUM: MONTANA STATE PLANE, NAD83, US FEET

LEGEND	NOTES
PROPOSED ROUTE	
EXISTING PIPELINES	
PARCEL LINES	
SECTION LINES	
TOWNSHIP/RANGE LINES	

PIPE SUMMARY			
FROM	TO	LIN. FT.	TYPE

PIPE SPECIFICATIONS			
FROM	TO	LIN. FT.	TYPE

SPECIFICATIONS		REVISIONS				
WELDS:	X-RAYS:	REV. NO.	DESCRIPTION	DWN	CHKD	DATE
TEST PRESSURE:		A	ISSUED FOR REVIEW	TL	BT	03-14-11
M.O.P.:		B	ISSUED FOR REVIEW	TL	BT	04-15-11
CONST. START DATE:		C	ISSUED FOR REVIEW	TL	BT	05-17-11
CONST. END DATE:		D	ISSUED FOR REVIEW	TL	QB	06-15-11
FIELD BOOK	PAGES	E	ISSUED FOR REVIEW	TL	QB	06-29-11
		F	ISSUED FOR REVIEW	TL	QB	09-30-11
		G	ISSUED FOR BID	TL	QB	10-12-11



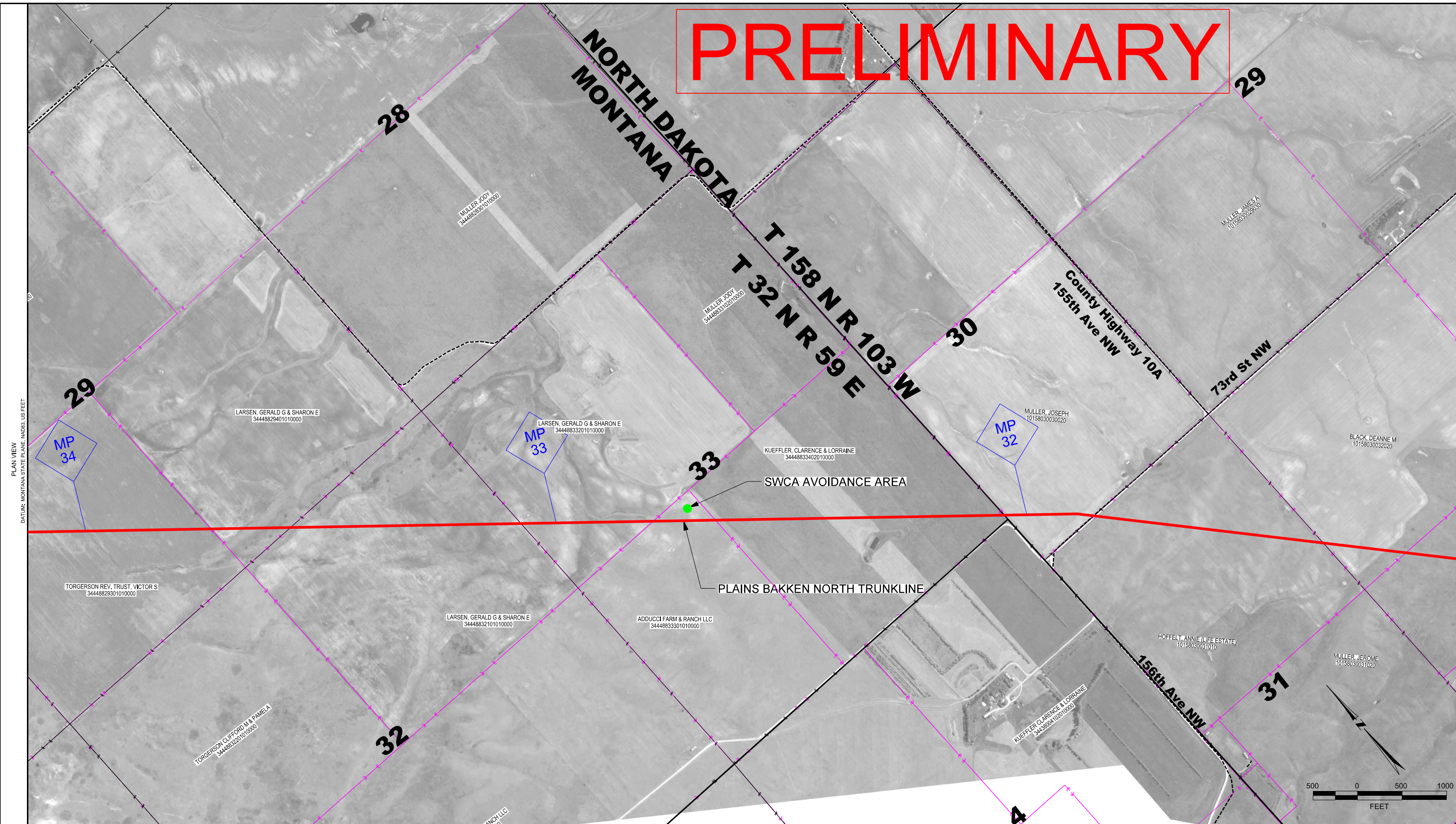
PLAINS
ALL AMERICAN
PIPELINE, L.P.

BAKKEN NORTH TRUNKLINE
PROPOSED ROUTE - 10 of 28
WILLIAMS CO., ND & SHERIDAN CO., MT

SCALE: AS SHWN DATE PROJECT NO. DRAWING NO.
DWN BY: TL 02-02-11 02793 14933-M-1110
CHKD BY: BT 02-02-11 REVISION: G
ENGR:

PREPARED BY: PALOMNY ENGINEERING, INC. PLOTTED: 02/02/11

PRELIMINARY




NOTES	
LEGEND	
PROPOSED ROUTE	
EXISTING PIPELINES	
PARCEL LINES	
SECTION LINES	
TOWNSHIP/RANGE LINES	

PIPE SUMMARY			
FROM	TO	LIN. FT.	TYPE

PIPE SPECIFICATIONS		
FROM	TO	LIN. FT.

SPECIFICATIONS		REVISIONS				
WELDS:	X-RAYS:	REV. NO.	DESCRIPTION	DWN	CHKD	DATE
TEST PRESSURE:		A	ISSUED FOR REVIEW	TL	BT	03-14-11
M.O.P.:		B	ISSUED FOR REVIEW	TL	BT	04-15-11
CONST. START DATE:		C	ISSUED FOR REVIEW	TL	BT	04-25-11
CONST. END DATE:		D	ISSUED FOR REVIEW	TL	BT	05-17-11
FIELD BOOK	PAGES	E	ISSUED FOR REVIEW	TL	QB	06-15-11
		F	ISSUED FOR REVIEW	TL	QB	09-30-11
		G	ISSUED FOR BID	TL	QB	10-12-11



PLAINS
ALL AMERICAN
PIPELINE, L.P.

BAKKEN NORTH TRUNKLINE
PROPOSED ROUTE - 12 of 28
WILLIAMS CO., ND & SHERIDAN CO., MT

SCALE: AS SHWN DATE PROJECT NO. DRAWING NO.
DWN BY: TL 02-09-11 02793 14933-M-1112
CHKD BY: BT 02-09-11 REVISION: G
ENGR:

PLAN VIEW
DATUM: MONTANA STATE PLANE, NAD83, US FEET

PREPARED BY: POLONY ENGINEERING, INC. PLOTTED: DATE: