

*Addendum to a Class I and Class III Cultural Resource Inventory of the Bakken North Pipeline,
Williams County, North Dakota*

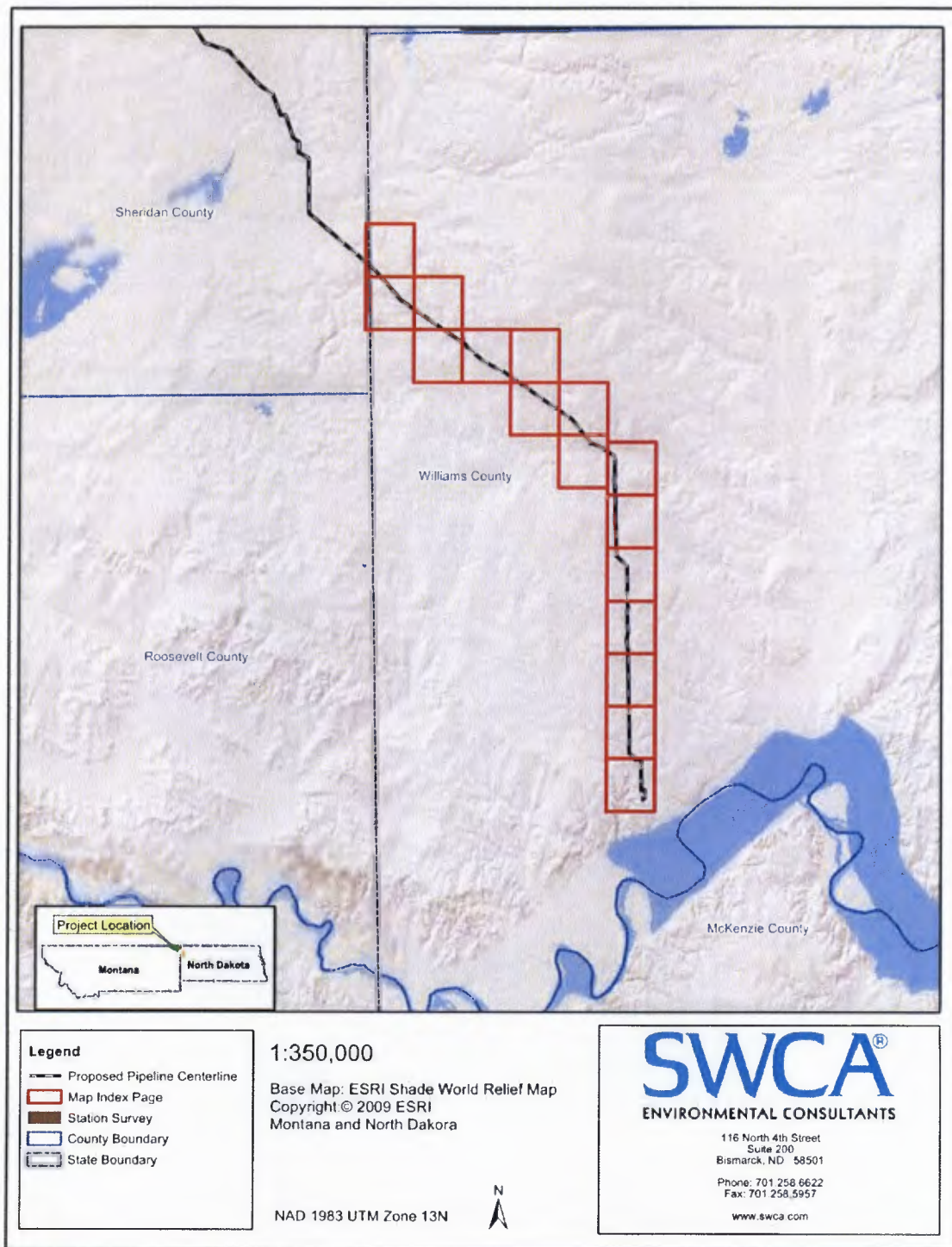


Figure 1. Project area overview map.

Contains Privileged Information -- Do Not Release

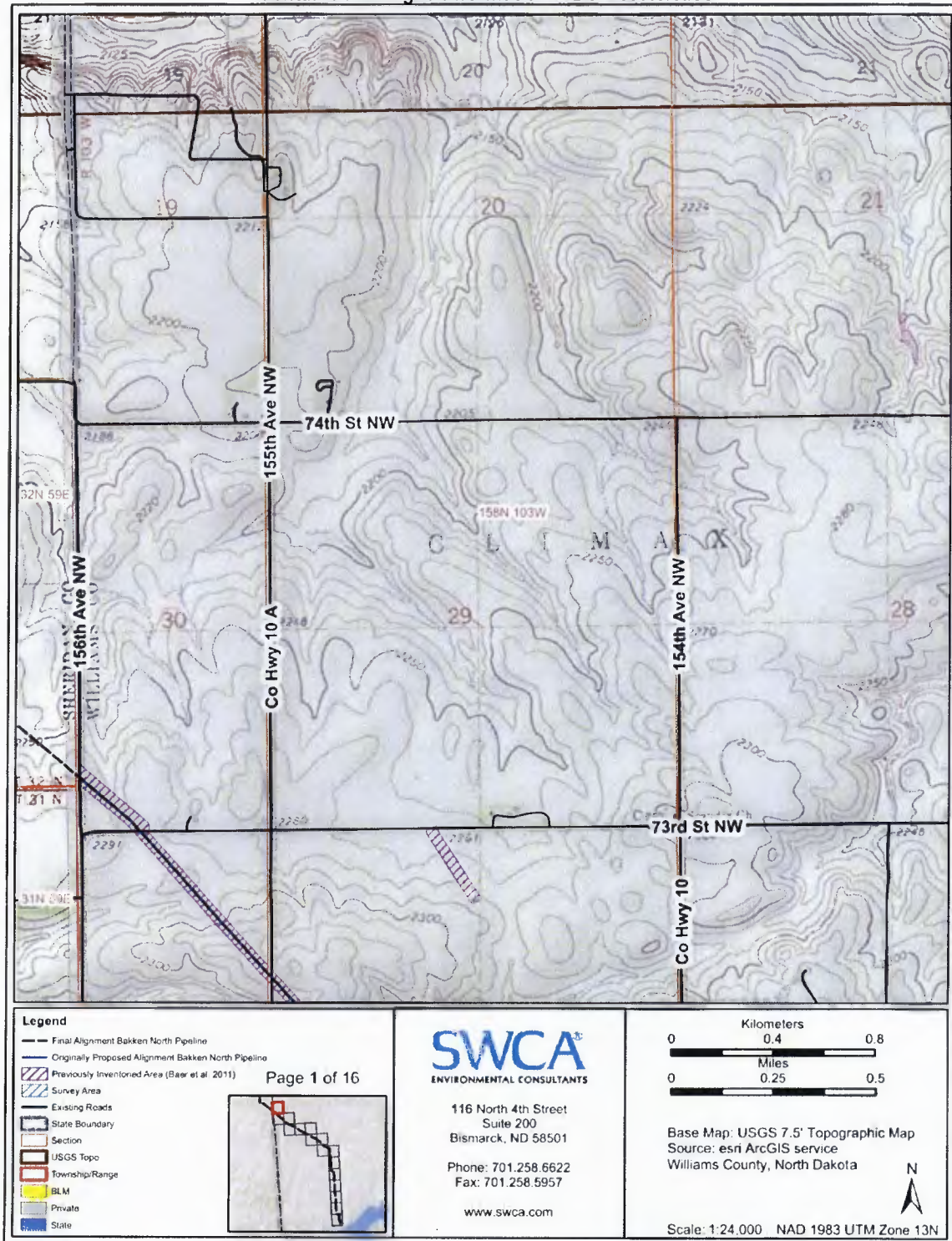


Figure 2. Project area map 1 of 16.

*Addendum to a Class I and Class III Cultural Resource Inventory of the Bakken North Pipeline,
Williams County, North Dakota*

Contains Privileged Information -- Do Not Release

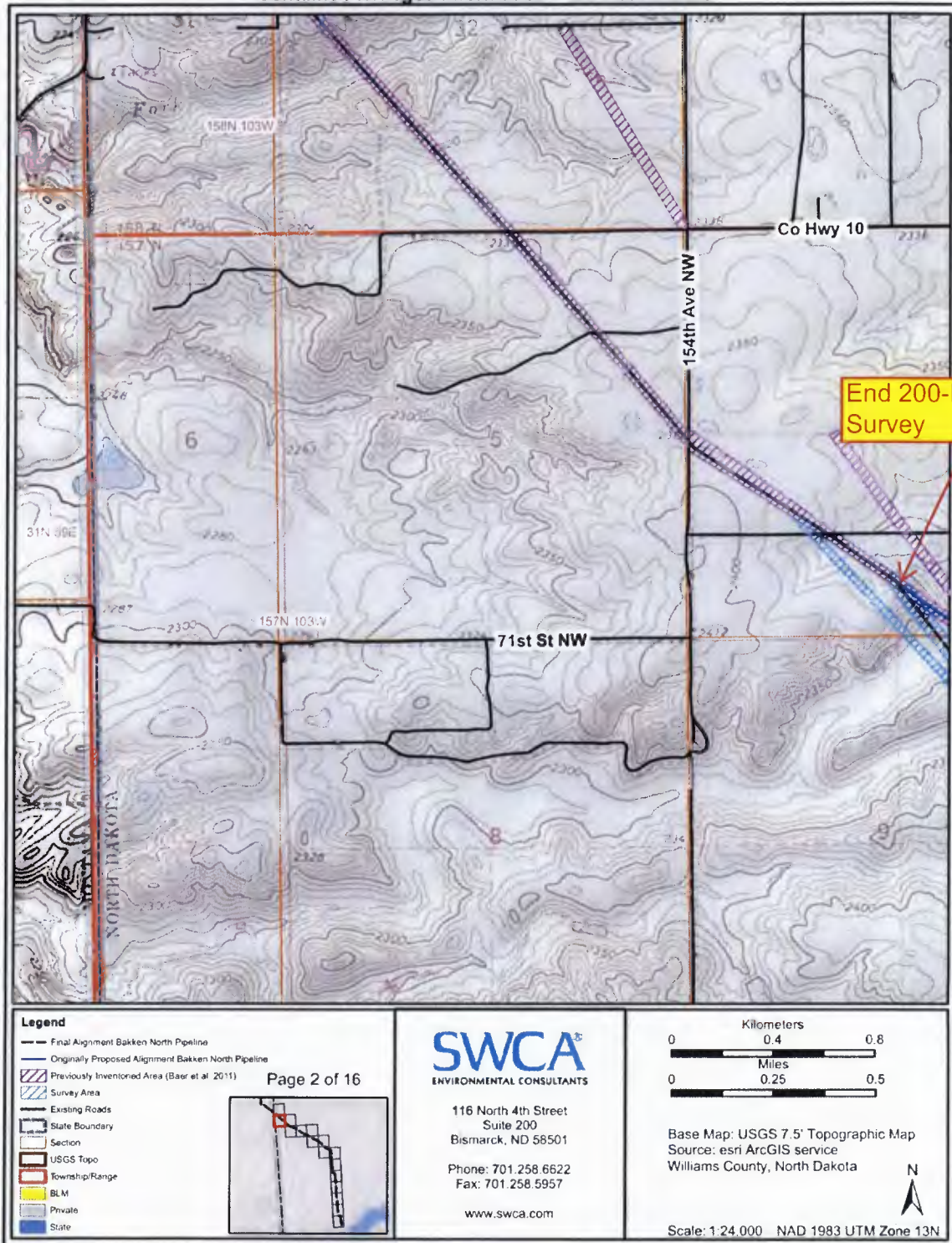


Figure 3. Project area map 2 of 16.

Contains Privileged Information -- Do Not Release

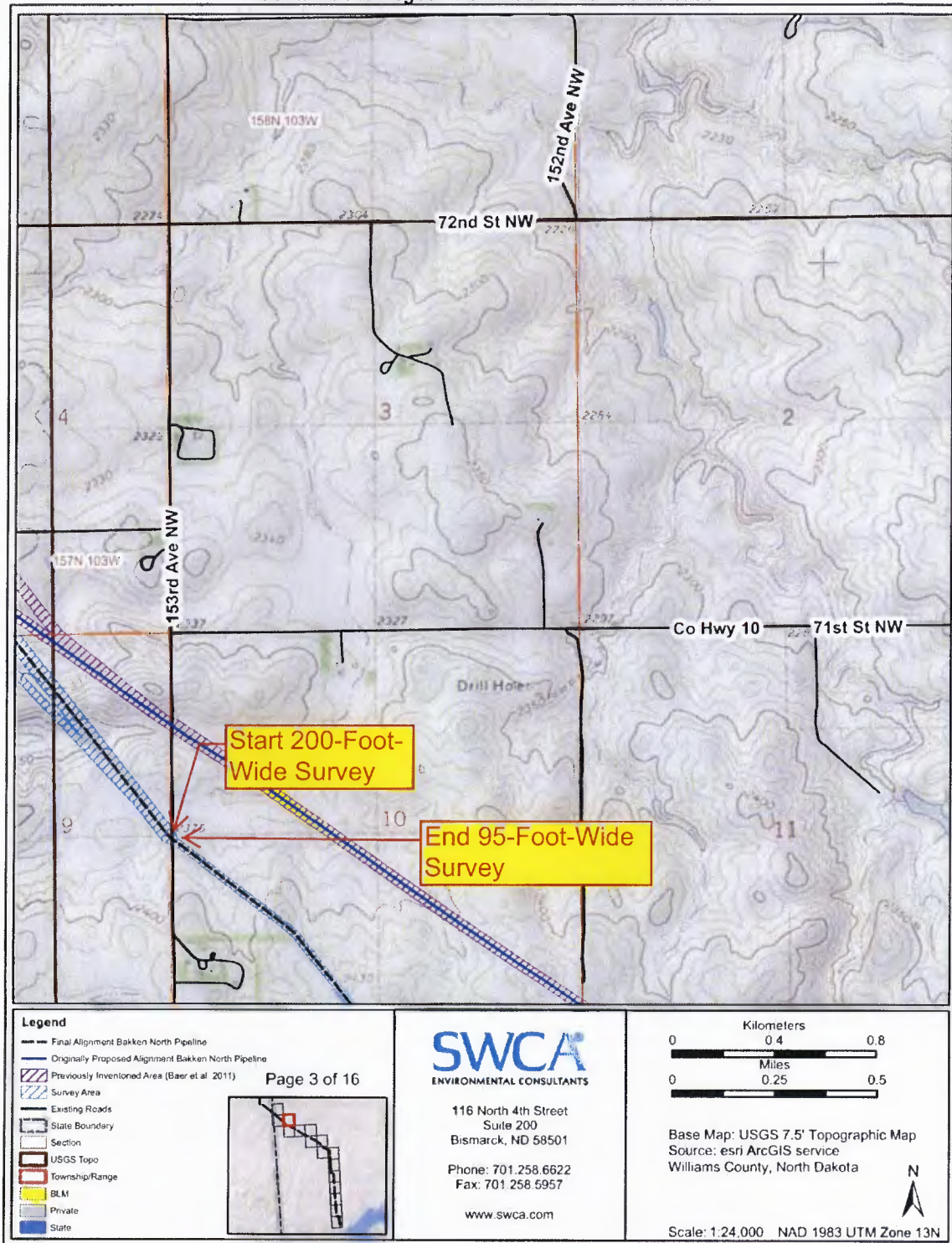


Figure 4. Project area map 3 of 16.

Addendum to a Class I and Class III Cultural Resource Inventory of the Bakken North Pipeline,
Williams County, North Dakota

Contains Privileged Information -- Do Not Release

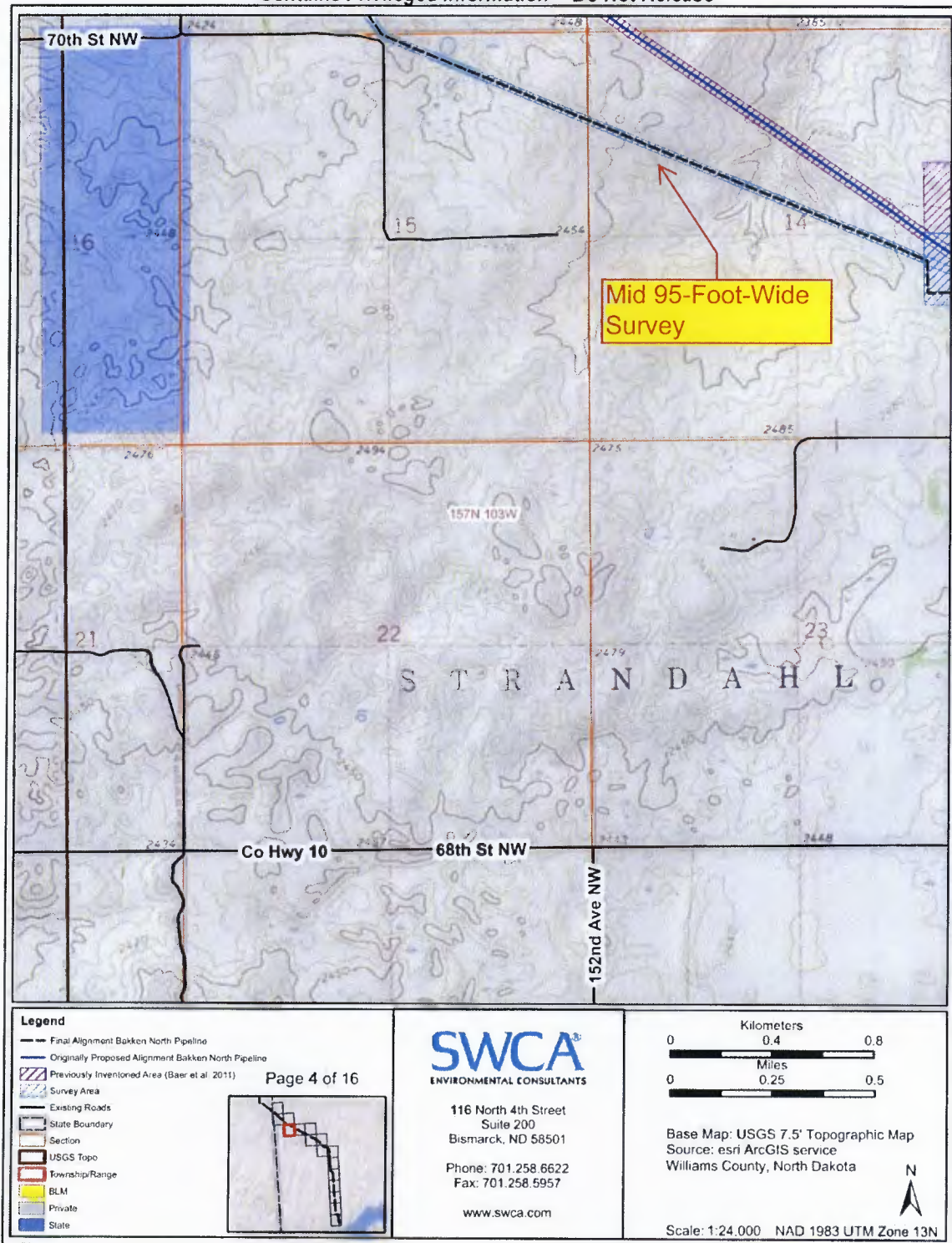


Figure 5. Project area map 4 of 16.

Contains Privileged Information -- Do Not Release

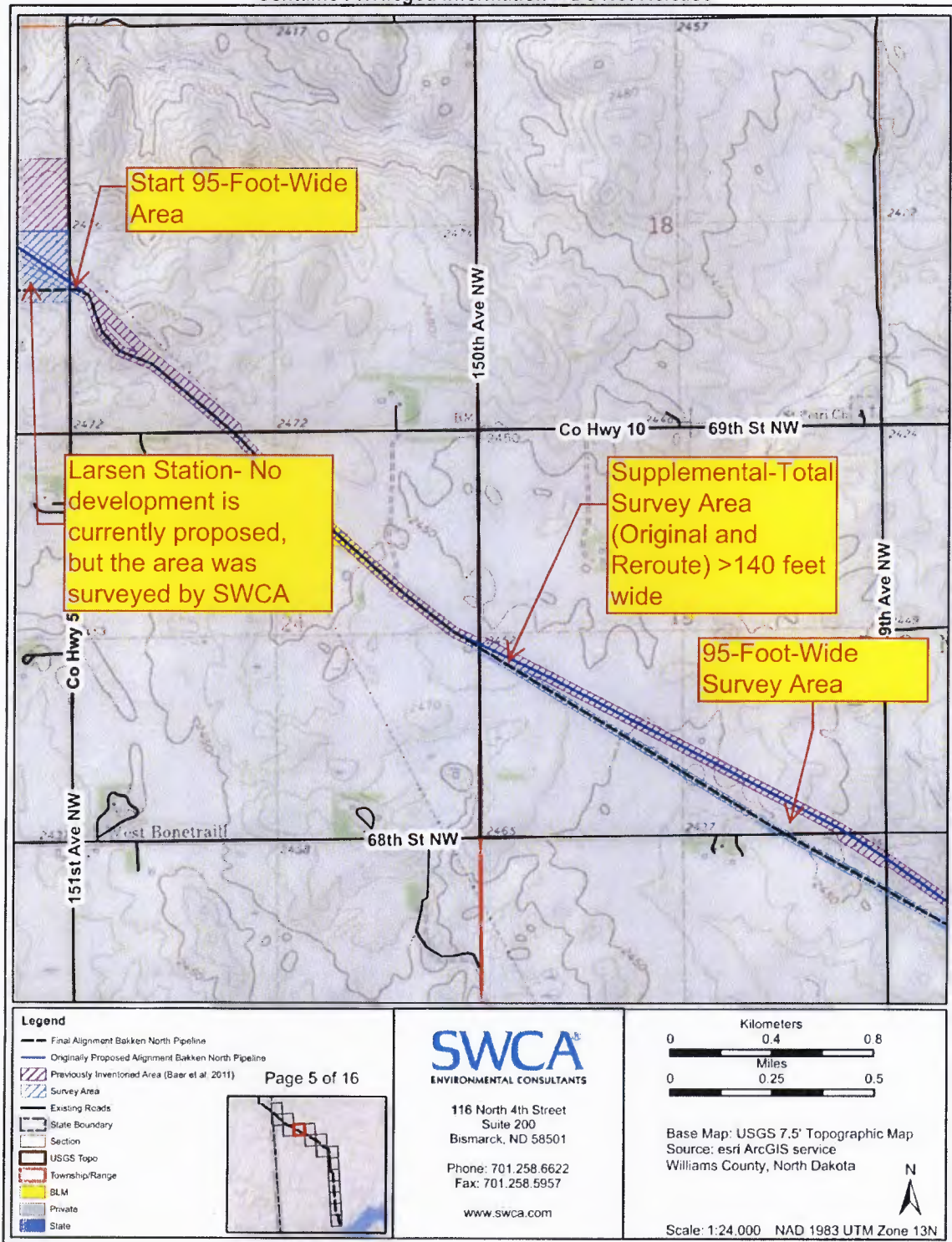


Figure 6. Project area map 5 of 16.

Contains Privileged Information -- Do Not Release

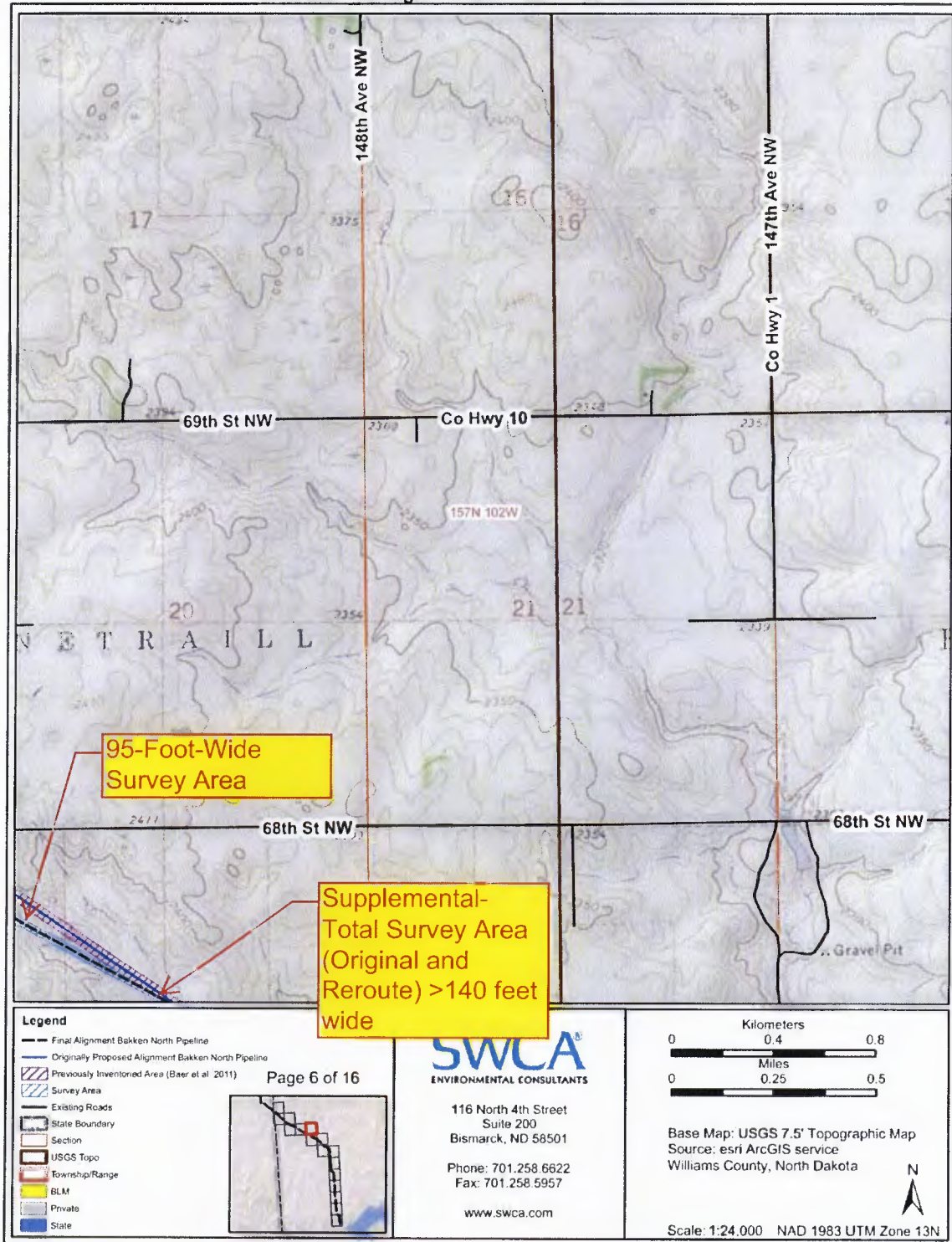


Figure 7. Project area map 6 of 16.

Supplemental-Total Survey Area (Original and Reroute) >140 feet wide

um to a Class I and Class III Cultural Resource Inventory of the Bakken North Pipeline, Williams County, North Dakota

Contains Privileged Information -- Do Not Release

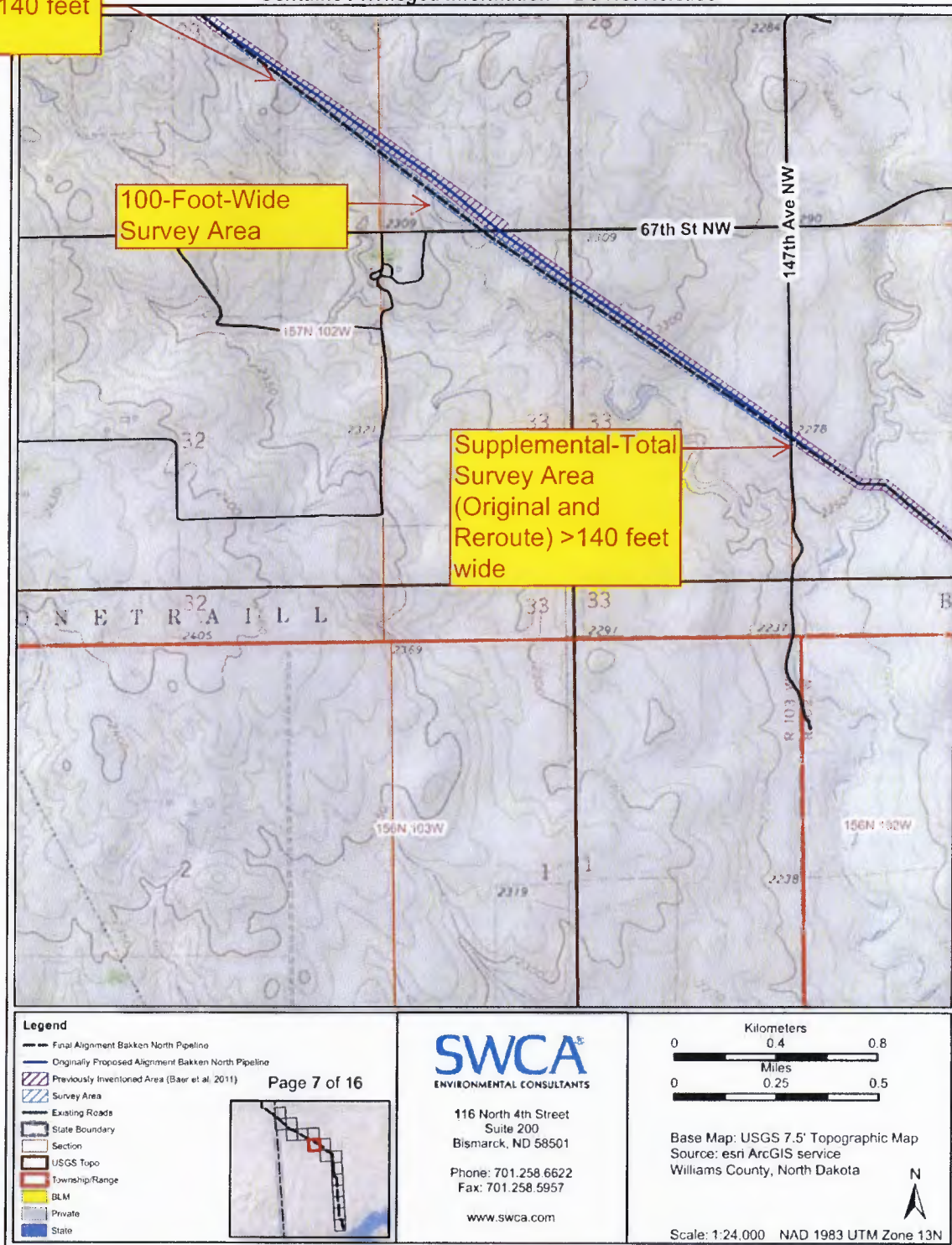


Figure 8. Project area map 7 of 16.

Contains Privileged Information -- Do Not Release

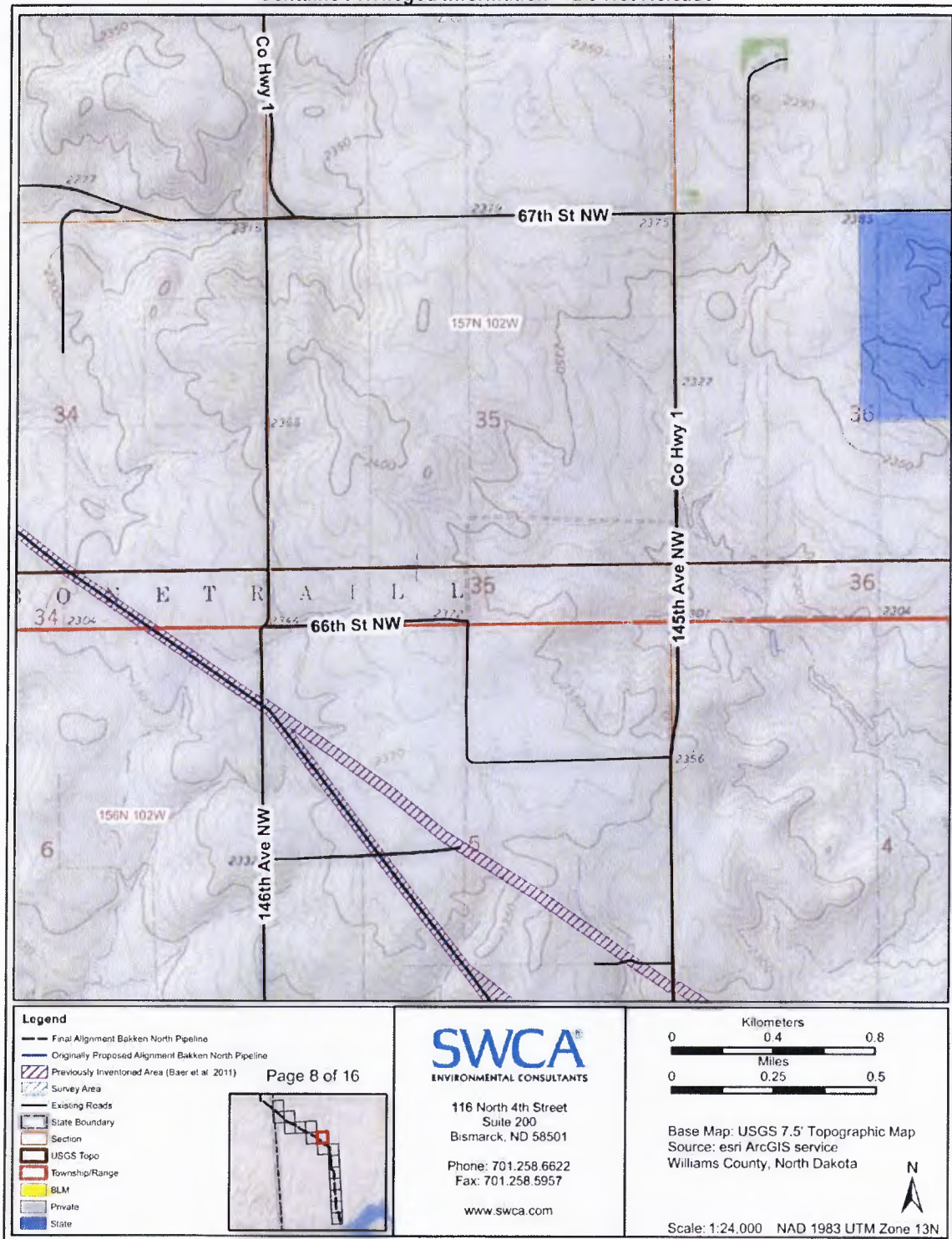


Figure 9. Project area map 8 of 16.

Addendum to a Class I and Class III Cultural Resource Inventory of the Bakken North Pipeline,
Williams County, North Dakota

Contains Privileged Information -- Do Not Release

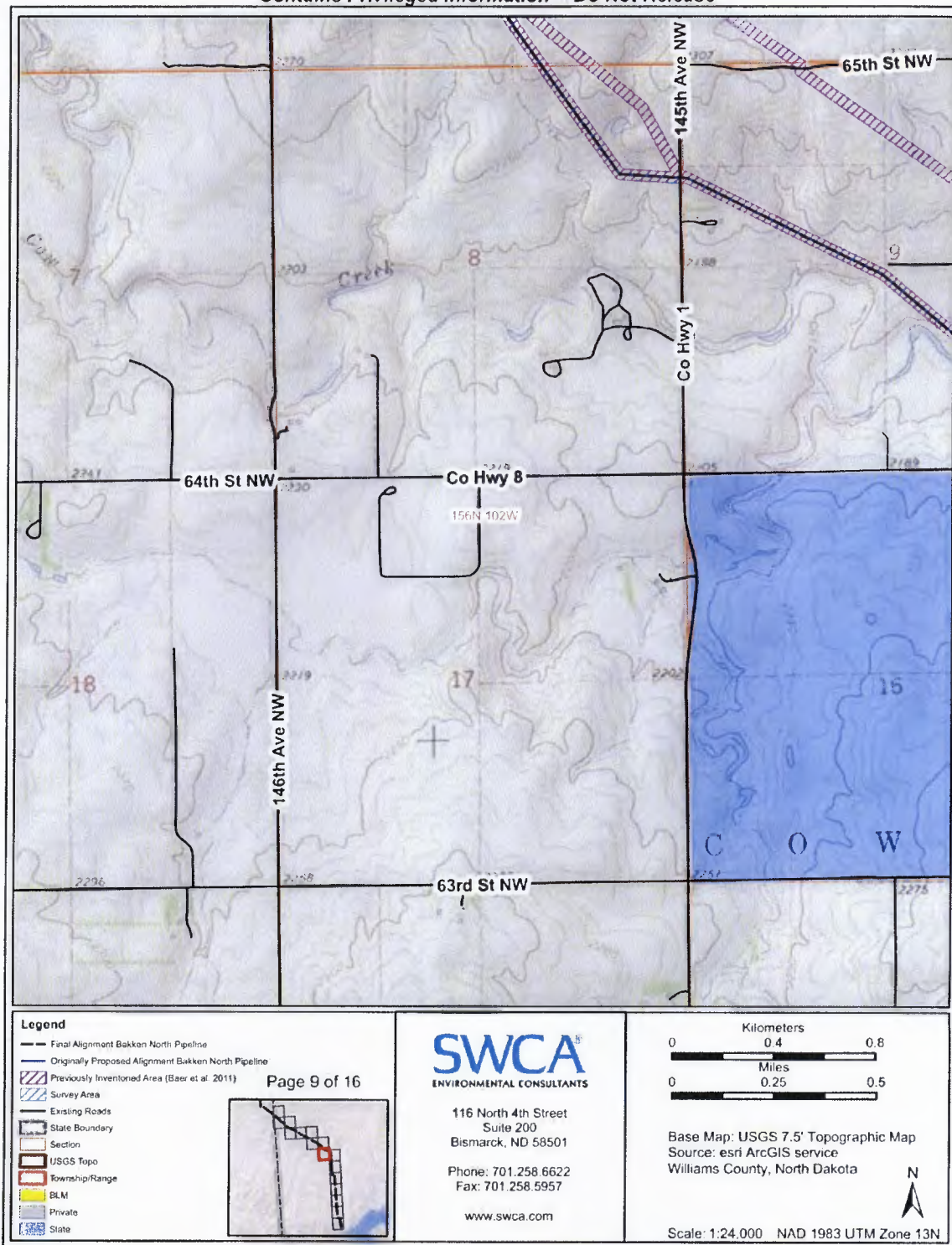


Figure 10. Project area map 9 of 16.

Contains Privileged Information -- Do Not Release

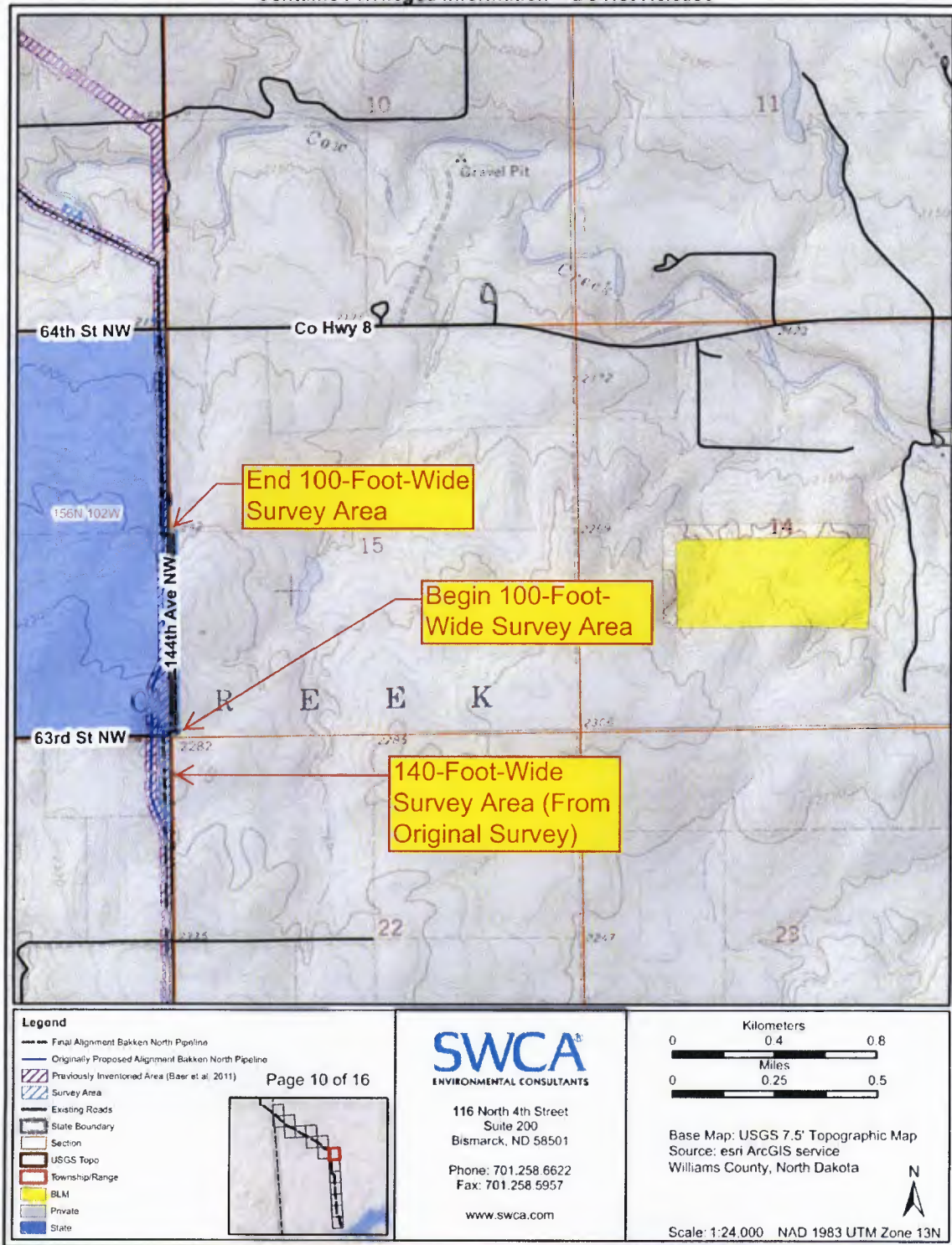


Figure 11. Project area map 10 of 16.

Contains Privileged Information -- Do Not Release

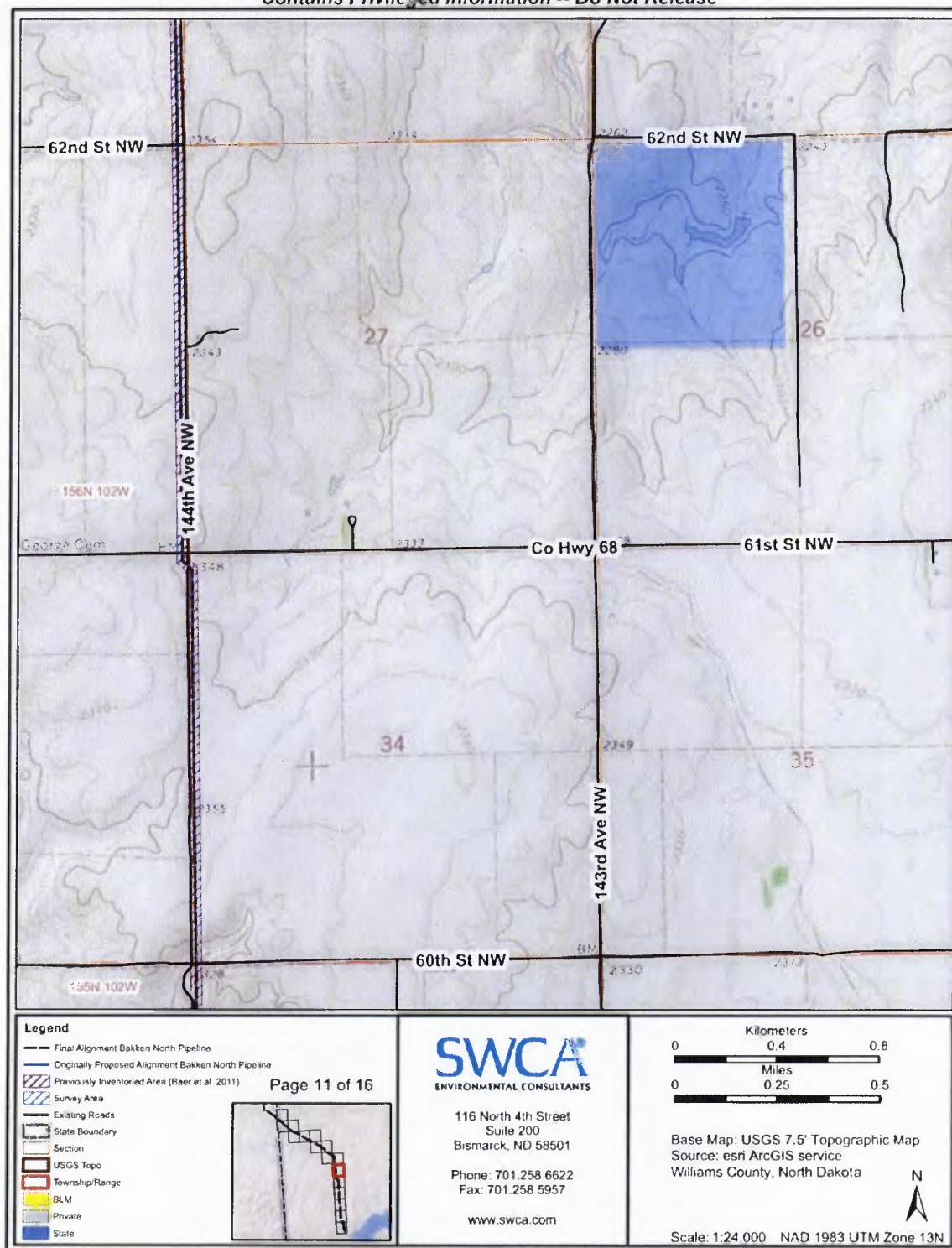


Figure 12. Project area map 11 of 16.

Contains Privileged Information -- Do Not Release

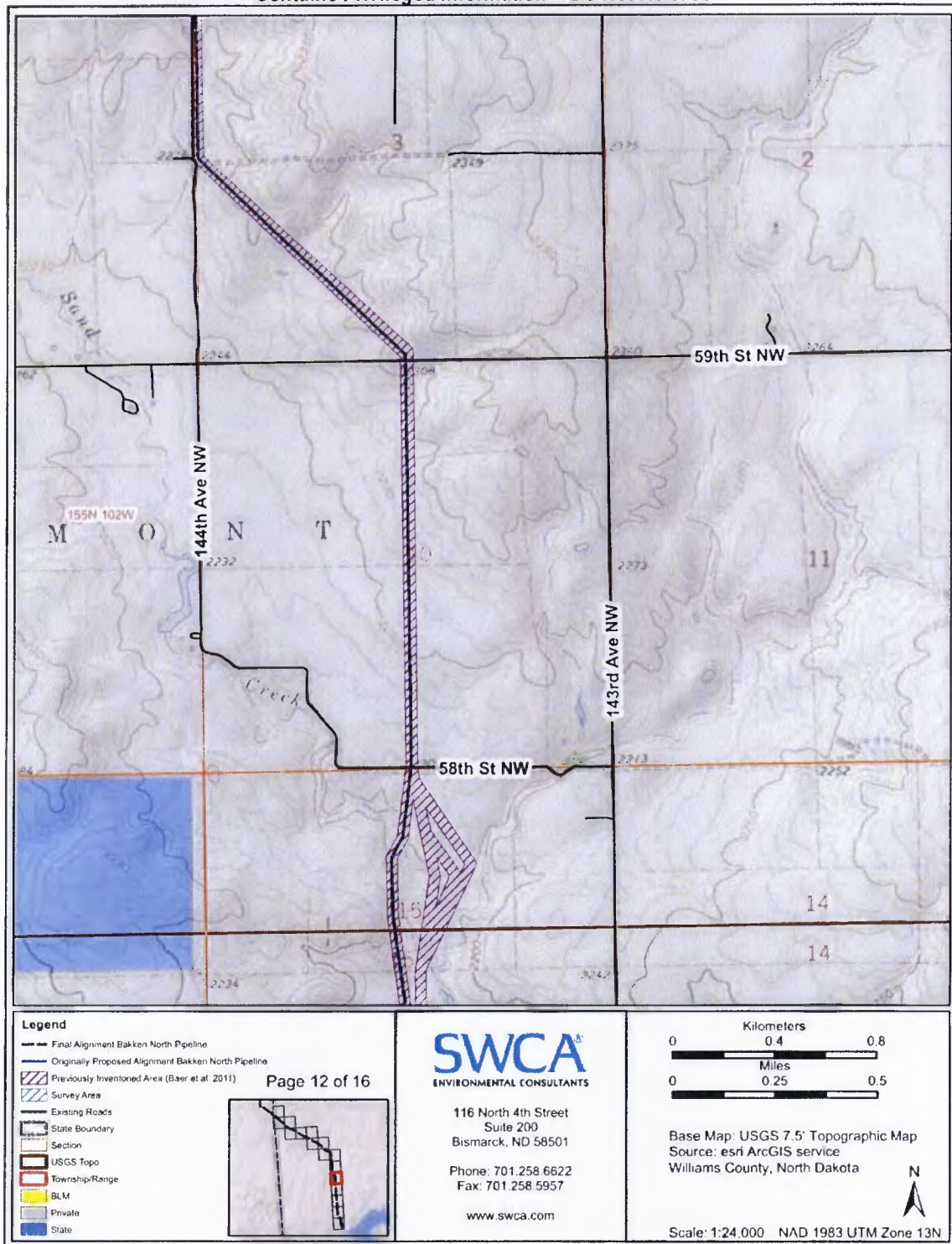


Figure 13. Project area map 12 of 16.

Contains Privileged Information -- Do Not Release

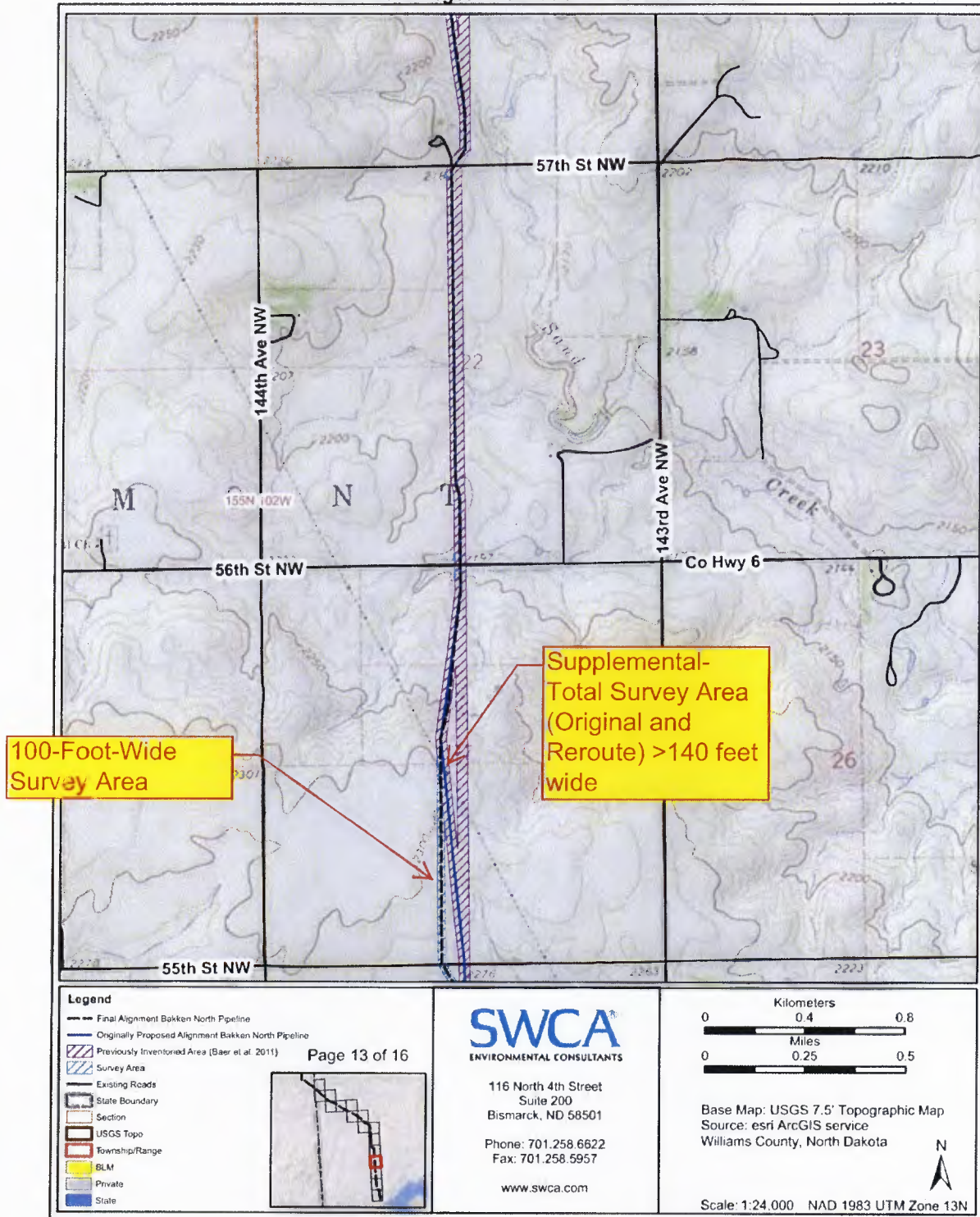


Figure 14. Project area map 13 of 16.

*Addendum to a Class I and Class III Cultural Resource Inventory of the Bakken North Pipeline,
Williams County, North Dakota*

Contains Privileged Information -- Do Not Release

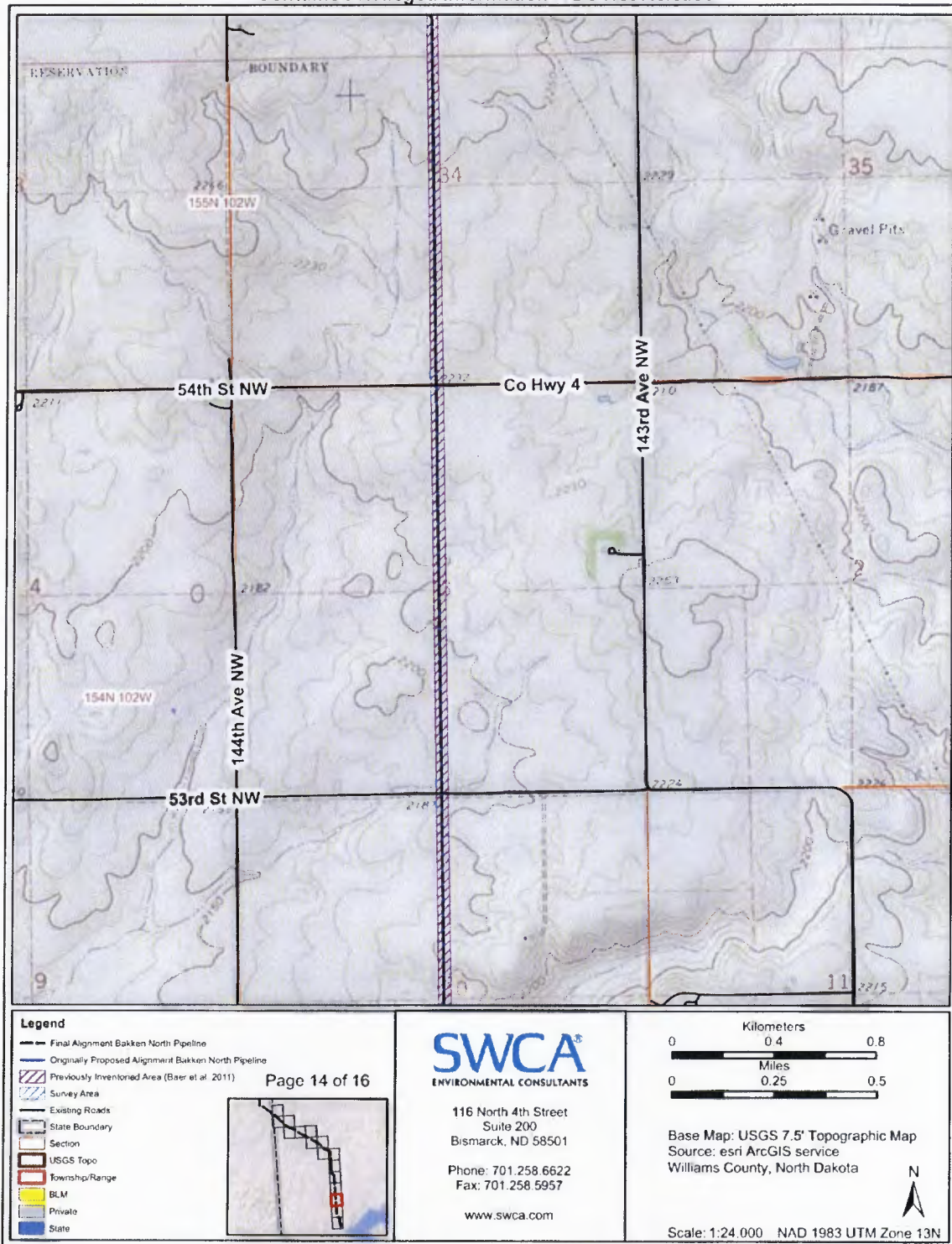


Figure 15. Project area map 14 of 16.

Contains Privileged Information -- Do Not Release

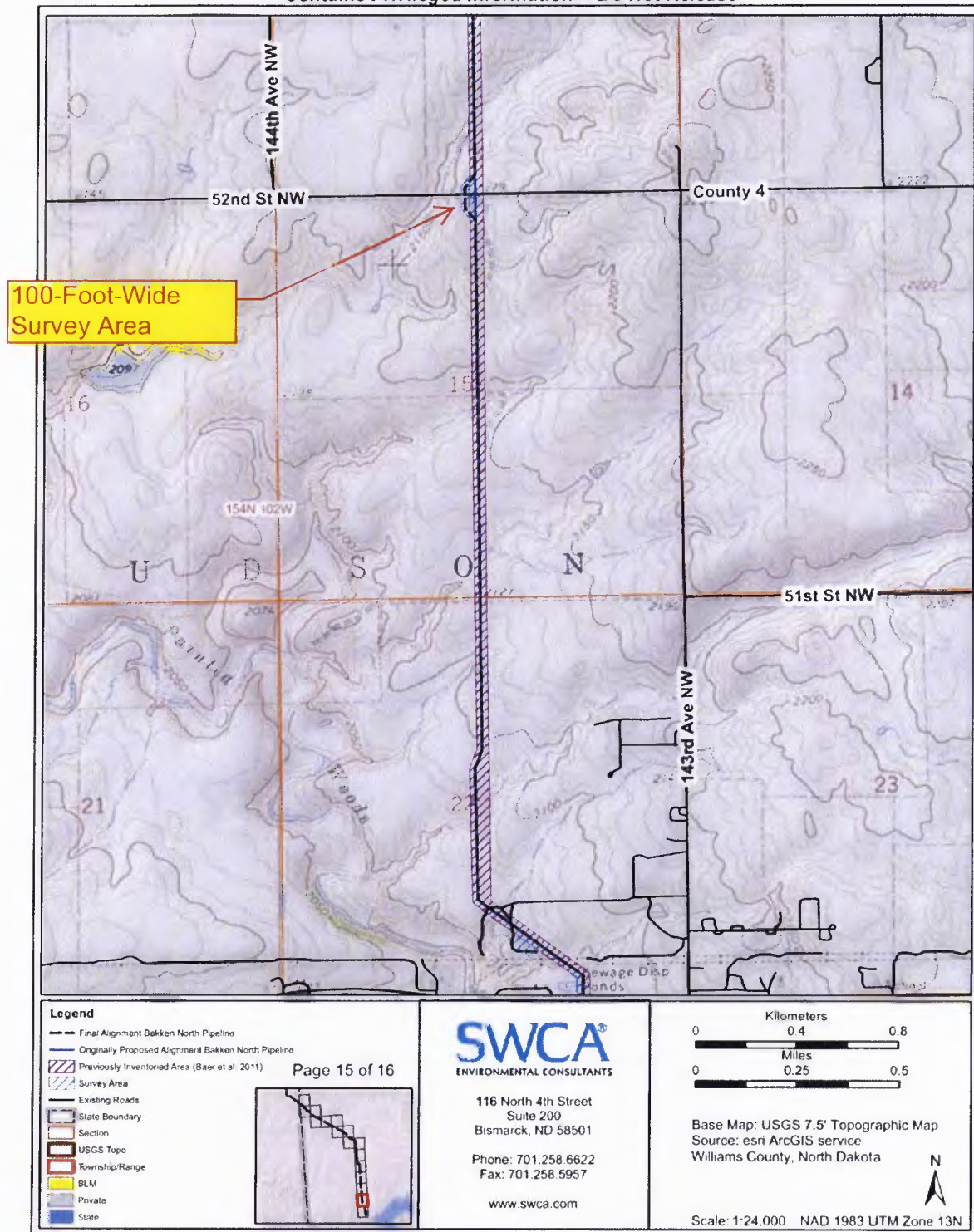
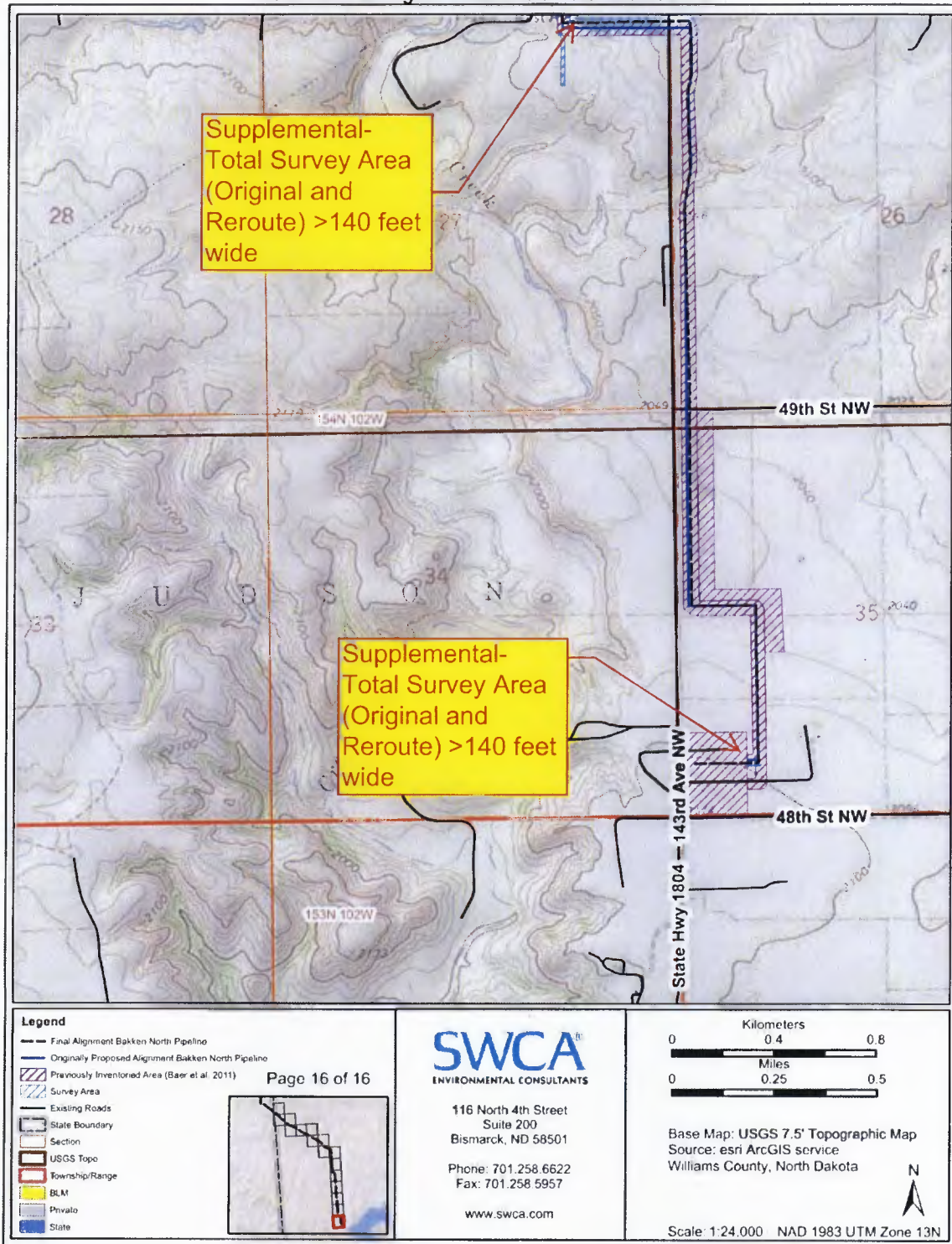


Figure 16. Project area map 15 of 16.

Contains Privileged Information -- Do Not Release



Legend

- Final Alignment Bakken North Pipeline
- Originally Proposed Alignment Bakken North Pipeline
- Previously Inventoried Area (Baer et al. 2011)
- Survey Area
- Existing Roads
- State Boundary
- Section
- USGS Topo
- Township/Range
- BLM
- Private
- State

Page 16 of 16

SWCA
ENVIRONMENTAL CONSULTANTS

116 North 4th Street
Suite 200
Bismarck, ND 58501

Phone: 701.258.6622
Fax: 701.258.5957

www.swca.com

Kilometers
0 0.4 0.8

Miles
0 0.25 0.5

Base Map: USGS 7.5' Topographic Map
Source: esri ArcGIS service
Williams County, North Dakota

Scale: 1:24,000 NAD 1983 UTM Zone 13N

Figure 17. Project area map 16 of 16.