

PLAN VIEW
 DATUM: MONTANA STATE PLANE, NAD83, US FEET


NOTES	
LEGEND	
PROPOSED ROUTE	
EXISTING PIPELINES	
TOWNSHIP/RANGE LINES	
OVERVIEW MAPS	

PIPE SUMMARY							
FROM	TO	LIN. FT.	TYPE	FROM	TO	LIN. FT.	TYPE

PIPE SPECIFICATIONS		
TYPE	DESCRIPTION	LIN. FT.

SPECIFICATIONS	
WELDS:	X-RAYS:
TEST PRESSURE:	M.O.P.:
CONST. START DATE:	CONST. END DATE:
FIELD BOOK	PAGES

REVISIONS			
REV. NO.	DESCRIPTION	DWN	CHKD
H	ISSUED FOR REVIEW	TL	QB
I	ISSUED FOR BID	TL	QB
J	ISSUED FOR REVIEW	TL	BT

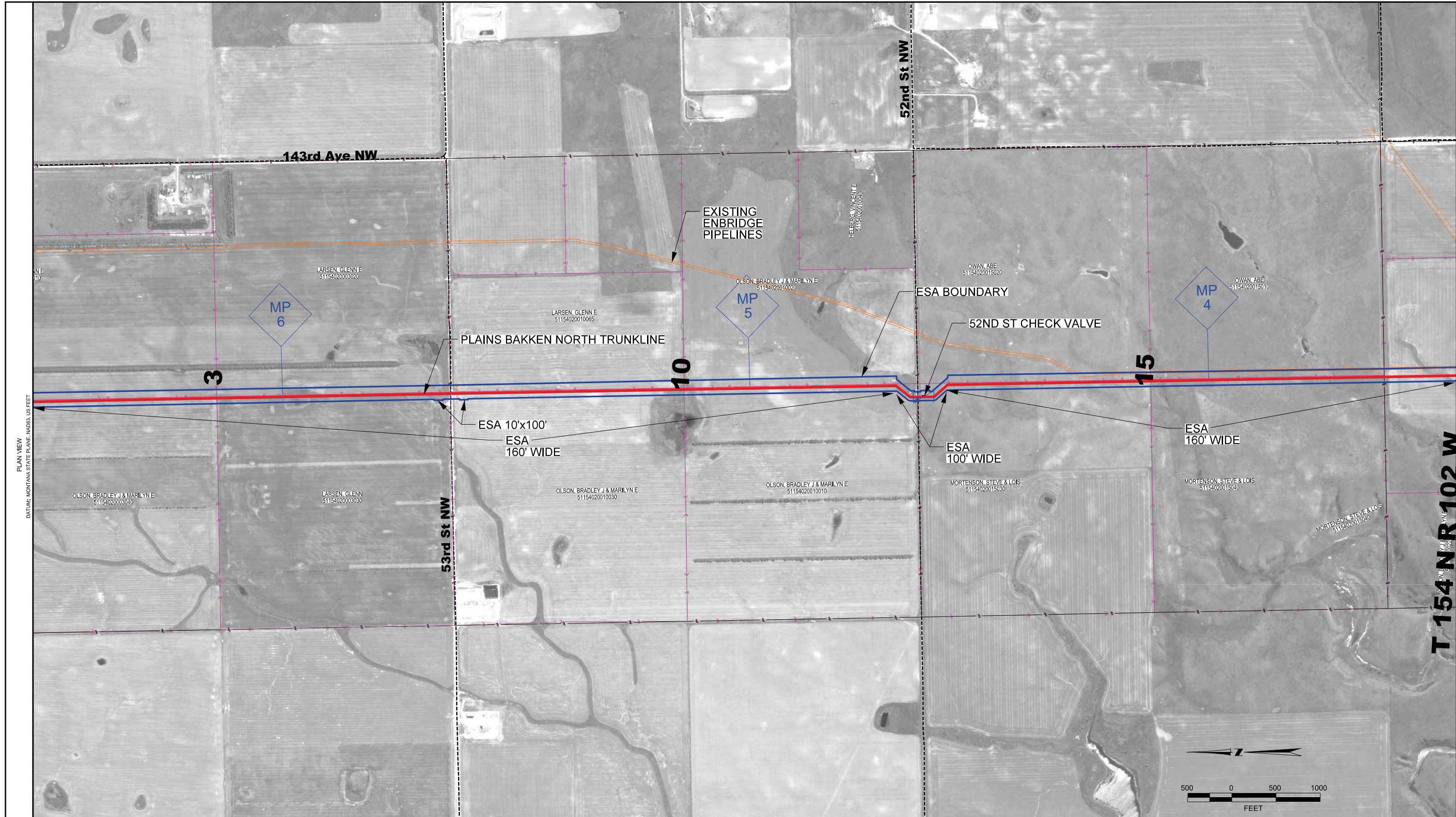


PLAINS
ALL AMERICAN
PIPELINE, L.P.

**BAKKEN NORTH TRUNKLINE
PROPOSED ROUTE OVERVIEW #1
WILLIAMS CO., ND & SHERIDAN CO., MT**

SCALE: AS SHWN DATE PROJECT NO. DRAWING NO.
 DWN BY: TL 03-03-11 02793 14933-M-0003
 CHKD BY: QB 03-03-11 REVISION: J
 ENGR:

PREPARED BY: POLSONY ENGINEERING, INC. PLOTTED: 03/03/11



PLAN VIEW
DATUM: MONTANA STATE PLANE, NAD83, US FEET

NOTES	
LEGEND	
PROPOSED ROUTE	
EXISTING PIPELINES	
PARCEL LINES	
SECTION LINES	
TOWNSHIP/RANGE LINES	
ENVIRONMENTAL SURVEY AREA	
NOTES:	
1) ESA - ENVIRONMENTAL SURVEY AREA	
2) DIMENSIONS ARE APPROXIMATE AND FOR USE IN PSC APPLICATION ONLY.	


PIPE SUMMARY							
FROM	TO	LIN. FT.	TYPE	FROM	TO	LIN. FT.	TYPE

PIPE SPECIFICATIONS		
FROM	TO	DESCRIPTION

SPECIFICATIONS		REVISIONS				
WELDS:	X-RAYS:	REV. NO.	DESCRIPTION	DWN	CHKD	DATE
		A	ISSUED FOR REVIEW	TL	BT	03-14-11
TEST PRESSURE:		B	ISSUED FOR REVIEW	TL	BT	04-15-11
M.O.P.:		C	ISSUED FOR REVIEW	TL	BT	05-17-11
CONST. START DATE:		D	ISSUED FOR REVIEW	TL	QB	06-15-11
CONST. END DATE:		E	ISSUED FOR REVIEW	TL	QB	09-30-11
FIELD BOOK	PAGES	F	ISSUED FOR BID	TL	QB	10-12-11
		G	ADDED ESA BOUNDARY & NOTES	TL	QB	12-07-11
		H	REVISED ESA INFORMATION	TL	QB	12-20-11



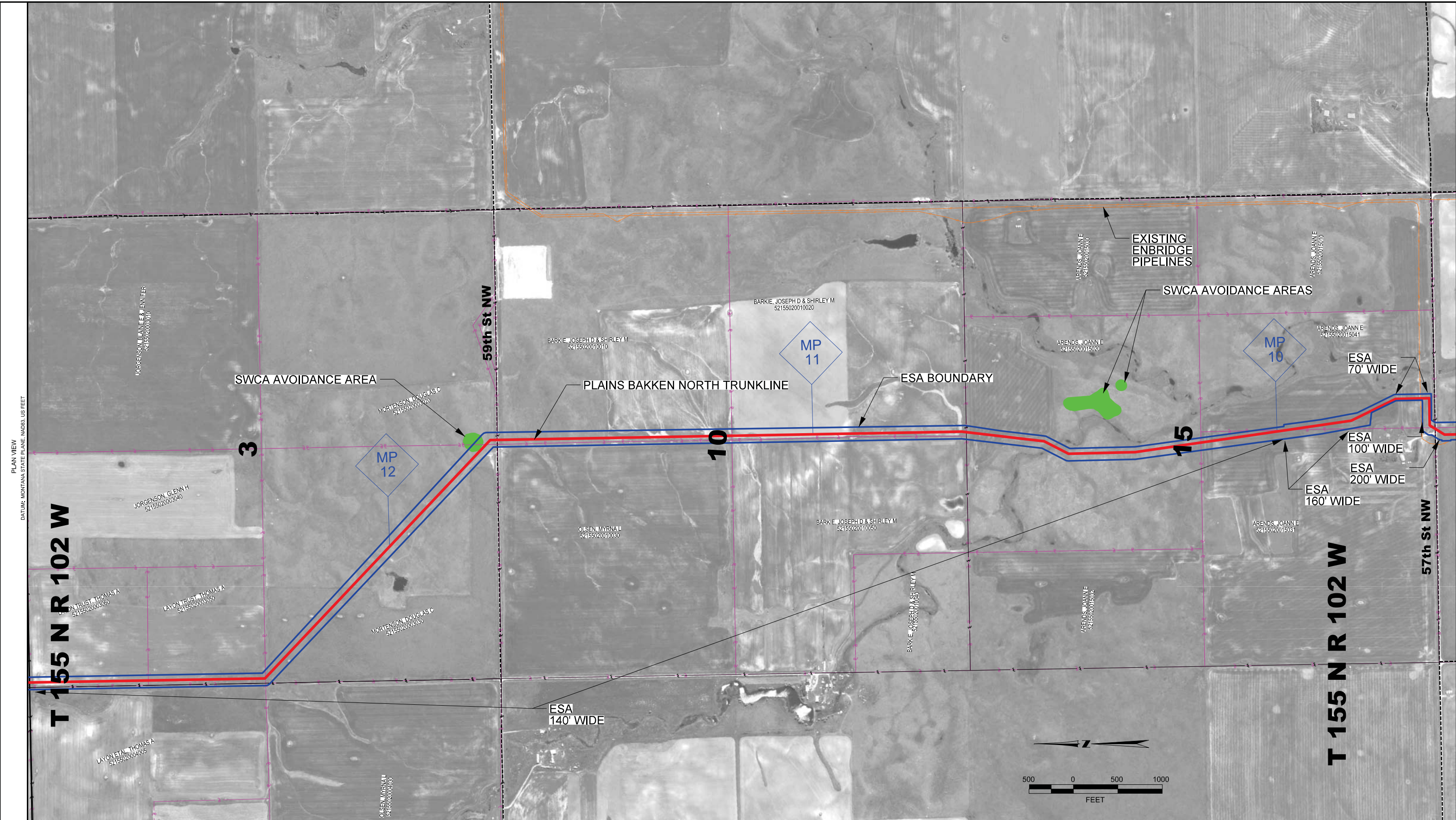




BAKKEN NORTH TRUNKLINE
PROPOSED ROUTE - 2 of 28
WILLIAMS CO., ND & SHERIDAN CO., MT

SCALE: AS SHWN	DATE	PROJECT NO.	DRAWING NO.
DWN BY: TL	02-01-11	02793	14933-M-1102
CHKD BY: BT	02-01-11		REVISION: H
ENGR:			

PREPARED BY: POLINER ENGINEERING, INC. PLOTTED: 02/07/11



PLAN VIEW
DATUM: MONTANA STATE PLANE, NAD83, US FEET

T 155 N R 102 W

T 155 N R 102 W

59th St NW

57th St NW

LEGEND

- PROPOSED ROUTE
- EXISTING PIPELINES
- PARCEL LINES
- SECTION LINES
- TOWNSHIP/RANGE LINES
- ENVIRONMENTAL SURVEY AREA

NOTES:

- 1) ESA - ENVIRONMENTAL SURVEY AREA
- 2) DIMENSIONS ARE APPROXIMATE AND FOR USE IN PSC APPLICATION ONLY.

PIPE SUMMARY				PIPE SPECIFICATIONS			
FROM	TO	LIN. FT.	TYPE	FROM	TO	LIN. FT.	TYPE

SPECIFICATIONS		REVISIONS	
WELDS:	X-RAYS:	REV. NO.	DESCRIPTION
TEST PRESSURE:		E	ISSUED FOR REVIEW
M.O.P.:		F	ISSUED FOR BID
CONST. START DATE:		G	ISSUED FOR REVIEW
CONST. END DATE:		H	ADDED ESA BOUNDARY & NOTES
FIELD BOOK	PAGES	I	REVISED ESA INFORMATION

REV. NO.	DESCRIPTION	DWN	CHKD	DATE
E	ISSUED FOR REVIEW	TL	QB	09-30-11
F	ISSUED FOR BID	TL	QB	10-12-11
G	ISSUED FOR REVIEW	TL	BT	10-25-11
H	ADDED ESA BOUNDARY & NOTES	TL	QB	12-07-11
I	REVISED ESA INFORMATION	TL	QB	12-20-11

PLAINS ALL AMERICAN PIPELINE, L.P.

BAKKEN NORTH TRUNKLINE PROPOSED ROUTE - 4 of 28
WILLIAMS CO., ND & SHERIDAN CO., MT

SCALE: AS SHWN DATE PROJECT NO. DRAWING NO.
DWN BY: TL 02-01-11 02793 14933-M-1104
CHKD BY: BT 02-01-11
ENGR:

REVISION: I

PREPARED BY: POLINER ENGINEERING, INC. PLOTTED: 02/01/11



NOTES

LEGEND

- PROPOSED ROUTE ———
- EXISTING PIPELINES ———
- PARCEL LINES ———
- SECTION LINES ———
- TOWNSHIP/RANGE LINES ———
- ENVIRONMENTAL SURVEY AREA ———

NOTES:

- 1) ESA - ENVIRONMENTAL SURVEY AREA
- 2) DIMENSIONS ARE APPROXIMATE AND FOR USE IN PSC APPLICATION ONLY.

PIPE SUMMARY				PIPE SPECIFICATIONS			
FROM	TO	LIN. FT.	TYPE	FROM	TO	LIN. FT.	TYPE

PIPE SPECIFICATIONS		SPECIFICATIONS	
DESCRIPTION	LIN. FT.	WELDS:	X-RAYS:

REVISIONS			
REV. NO.	DESCRIPTION	DWN	CHKD
A	ISSUED FOR REVIEW	TL	BT
B	ISSUED FOR REVIEW	TL	BT
C	ISSUED FOR REVIEW	TL	BT
D	ISSUED FOR REVIEW	TL	QB
E	ISSUED FOR REVIEW	TL	QB
F	ISSUED FOR BID	TL	QB
G	ADDED ESA BOUNDARY & NOTES	TL	QB
H	REVISED ESA INFORMATION	TL	QB

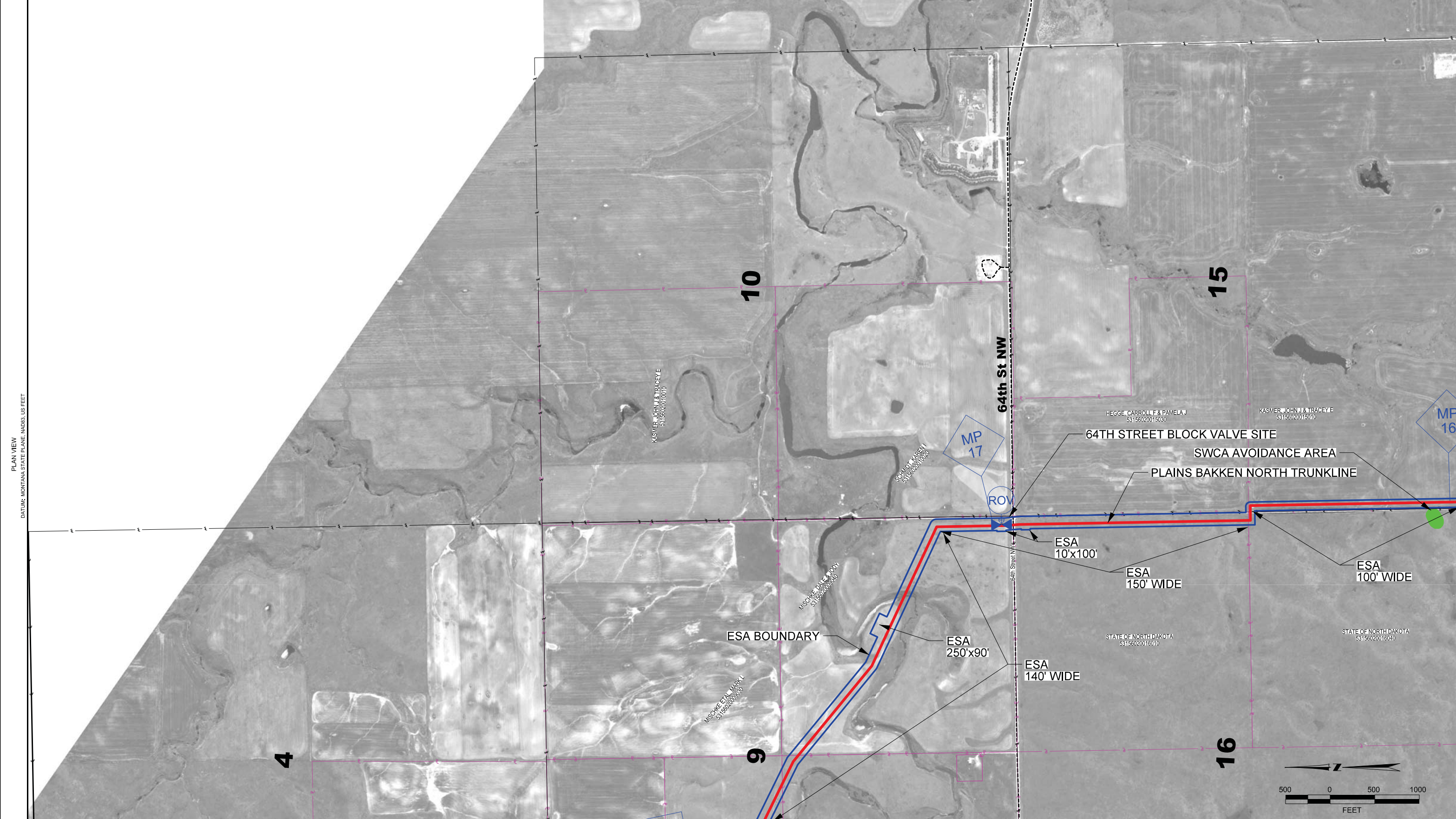


PLAINS
ALL AMERICAN
PIPELINE, L.P.

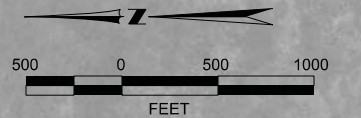
BAKKEN NORTH TRUNKLINE
PROPOSED ROUTE - 5 of 28
WILLIAMS CO., ND & SHERIDAN CO., MT

SCALE: AS SHWN DATE PROJECT NO. DRAWING NO.
DWN BY: TL 02-01-11 02793 14933-M-1105
CHKD BY: BT 02-01-11 REVISION: H
ENGR:

PREPARED BY: POLINNEY ENGINEERING, INC. / PLATTED: 02/01/11



PLAN VIEW
 DATUM: MONTANA STATE PLANE, NAD83, US FEET



NOTES	
LEGEND	
PROPOSED ROUTE	
EXISTING PIPELINES	
PARCEL LINES	
SECTION LINES	
TOWNSHIP/RANGE LINES	
ENVIRONMENTAL SURVEY AREA	
NOTES:	
1) ESA - ENVIRONMENTAL SURVEY AREA	
2) DIMENSIONS ARE APPROXIMATE AND FOR USE IN PSC APPLICATION ONLY.	

PIPE SUMMARY				PIPE SPECIFICATIONS			
FROM	TO	LIN. FT.	TYPE	FROM	TO	LIN. FT.	TYPE

SPECIFICATIONS		REVISIONS				
WELDS:	X-RAYS:	REV. NO.	DESCRIPTION	DWN	CHKD	DATE
TEST PRESSURE:		E	ISSUED FOR REVIEW	TL	QB	06-15-11
M.O.P.:		F	ISSUED FOR REVIEW	TL	QB	09-30-11
CONST. START DATE:		G	ISSUED FOR BID	TL	QB	10-12-11
CONST. END DATE:		H	ADDED ESA BOUNDARY & NOTES	TL	QB	12-07-11
FIELD BOOK	PAGES	I	REVISED ESA INFORMATION	TL	QB	12-20-11

PLAINS
ALL AMERICAN
PIPELINE, L.P.

BAKKEN NORTH TRUNKLINE
PROPOSED ROUTE - 6 of 28
WILLIAMS CO., ND & SHERIDAN CO., MT

SCALE:	AS SHWN	DATE:	PROJECT NO.	DRAWING NO.
DWN BY:	TL	02-01-11	02793	14933-M-1106
CHKD BY:	BT	02-01-11		
ENGR:				

PREPARED BY POLARIS ENGINEERING, INC. / PLOTTED: 02/01/11



NOTES

LEGEND

- PROPOSED ROUTE —
- EXISTING PIPELINES —
- PARCEL LINES —
- SECTION LINES —
- TOWNSHIP/RANGE LINES —
- ENVIRONMENTAL SURVEY AREA —

NOTES:

- 1) ESA - ENVIRONMENTAL SURVEY AREA
- 2) DIMENSIONS ARE APPROXIMATE AND FOR USE IN PSC APPLICATION ONLY.

PIPE SUMMARY				PIPE SPECIFICATIONS			
FROM	TO	LIN. FT.	TYPE	FROM	TO	LIN. FT.	TYPE

PIPE SPECIFICATIONS		SPECIFICATIONS	
DESCRIPTION	LIN. FT.	WELDS:	X-RAYS:

REVISIONS			
REV. NO.	DESCRIPTION	DWN	CHKD
E	ISSUED FOR REVIEW	TL	QB
F	ISSUED FOR REVIEW	TL	QB
G	ISSUED FOR BID	TL	QB
H	ADDED ESA BOUNDARY & NOTES	TL	QB
I	REVISED ESA INFORMATION	TL	QB



PLAINS
ALL AMERICAN
PIPELINE, L.P.

BAKKEN NORTH TRUNKLINE
PROPOSED ROUTE - 10 of 28
WILLIAMS CO., ND & SHERIDAN CO., MT

SCALE: AS SHWN DATE PROJECT NO. DRAWING NO.
DWN BY: TL 02-02-11 02793 14933-M-1110
CHKD BY: BT 02-02-11
ENGR:

PREPARED BY: POLINNEY ENGINEERING, INC. PLOTTED: 02/02/11

