



PLAINS
ALL AMERICAN
PIPELINE, L.P.

Weekly Construction Progress Report

Case # **PU-10-630**
Project: **Bakken North Project**
Week Ending: 7/8/2012

Report # 7

Title	Name	Company	Office Phone	Cell Phone
Project Manager	Jim Fleetwood	Plains Pipeline	307-472-9911	307-315-0574
Project Coordinator	Ron McCreery	Plains Pipeline	701-694-4414	406-765-8119
Contractor Spread	Mike Bondurant	Tomahawk	406-789-2380	406-789-7024

Brief Description of Week's Activities
 Right of Way (ROW) crew moved to Montana, footage not included in report.
 Environmental continued to check environmental control devices (ECD).
 Loss one day due to rain-out and one day for Holiday.
 Installed three test lead sets.
 528 welds x-rayed and 28 were not in code for 5.4% rate.

Project Completion Spread

Description	Previous Week Complete	This Week Complete	Total Complete	% Total Complete
Clear & Grade lft.	151912	Montana	151912	36.20
ROW Finished lft.	161712	Montana	161712	38.60
Stringing lft.	138010	24963	162973	38.90
Welding / X Ray	1371	528	1899	n/a
Ditching	43665	5651	49316	11.7
Lowering In	32858	8482	41340	9.87
Backfill	25708	6500	32208	7.7
Clean-up				n/a
Coating (Welds)	1028	378	1406	n/a
ECDs Installed				
Silt Fence lft.	4481	1030	5511	n/a
Hay bales ea.	256	0	256	n/a
Mats ea.	395	94	489	n/a
Waddles ea.	38	0	38	n/a

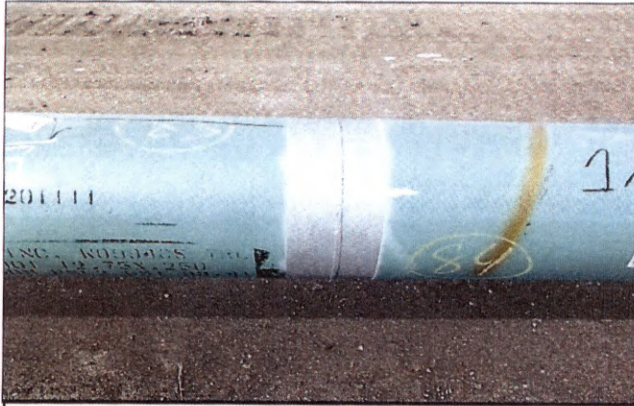
Form changed to show footages instead of station numbers.

Project construction / reclamation activities

Description	Previous Week Complete	This Week Complete	Total Complete	% Total Complete
Roadway / Bores ea.	8	1	9	n/a
Erosion / Sediment	n/a	n/a		n/a
Topsoil	n/a	n/a		n/a
Restoration/Cleanup	n/a	n/a		n/a
Roadway Restoration	n/a	n/a		n/a
Fence / Gate	n/a	n/a		n/a
Fertilizing / Seeding	n/a	n/a		n/a

Project Site Safety
 Number of Plains/Onshore employees on-site (25), contractor employees (201).
 No equipment or environmental issues.

Signature: Ron McCreery via e-mail R.M. Date: 7/9/2012



Blasted weld



Coated weld



Tie In / Williams Co ND

Wetland Backfilled between ST#1453+36 and ST#1454+20



Tie In / Williams Co ND

Tie in near ST#1504+63



Bore at 68th Ave



Bore at 68th Ave