



Bismarck Office  
116 North 4th Street, Suite 200  
Bismarck, North Dakota 58501  
Tel 701.258.6622 Fax 701.258.5957  
www.swca.com

September 1, 2011

Barr Engineering  
Attn: Mr. Dan Flo, Environmental Scientist  
4700 West 77<sup>th</sup> Street, Suite 200  
Minneapolis, Minnesota 55435

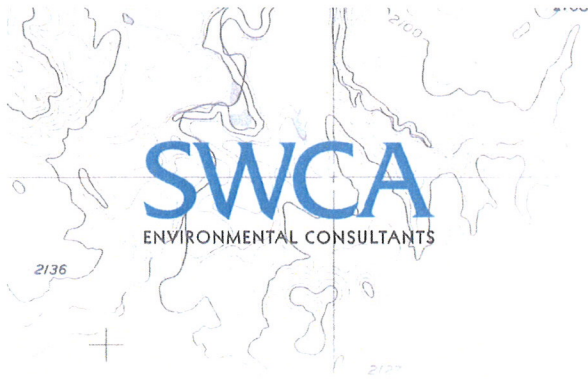
SWCA Project Number: 17121

**RE: Confirmation of Natural Resource Surveys at the Rangeland Pipeline, LLC- Beaver Lodge Metering Station**

Dear Mr. Flo,

On May 6, 2011, SWCA Environmental Consultants (SWCA) conducted a natural resource field survey of approximately 17.4 acres proposed to contain the Rangeland Pipeline, LLC-Beaver Lodge Metering Station (survey area). The survey area is located in the N ½ of Section 5, Township 155 North, Range 95 West, Williams County, North Dakota. SWCA ecologists conducted a wetland/waterbody survey concurrently with a cursory threatened and endangered species survey and habitat assessment, tree/sapling/shrub enumeration survey, and noxious weed survey.

No wetlands, threatened or endangered species or habitat, or noxious weed populations were observed within the survey area. SWCA recorded five areas containing *Shepherdia argentea* (silver buffaloberry) individuals within the survey area (Table 1). SWCA utilized sub-plot estimation techniques as well as direct count methods to determine the number of individuals per woody vegetation area within the survey area. In total, SWCA estimates approximately 155 woody stemmed individuals are present within the survey area.



Bismarck Office  
116 North 4th Street, Suite 200  
Bismarck, North Dakota 58501  
Tel 701.258.6622 Fax 701.258.5957  
www.swca.com

Table 1. Estimated number of tree/saplings/shrubs within the survey area

Feature ID	Species Present	Estimated Number of Individuals Present
BL_WV1	<i>silver buffaloberry</i>	39
BL_WV2	<i>silver buffaloberry</i>	81
BL_WV3	<i>silver buffaloberry</i>	15
BL_WV4	<i>silver buffaloberry</i>	10
BL_WV5	<i>silver buffaloberry</i>	10
	<b>Total Number of Individuals</b>	<b>155</b>

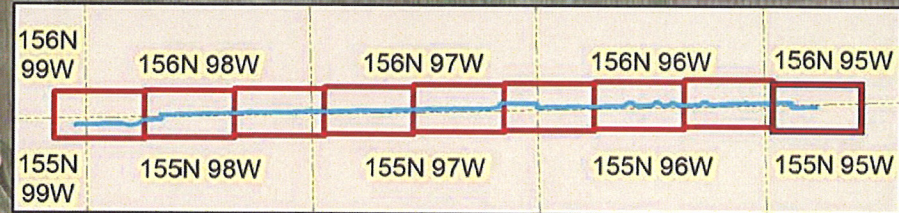
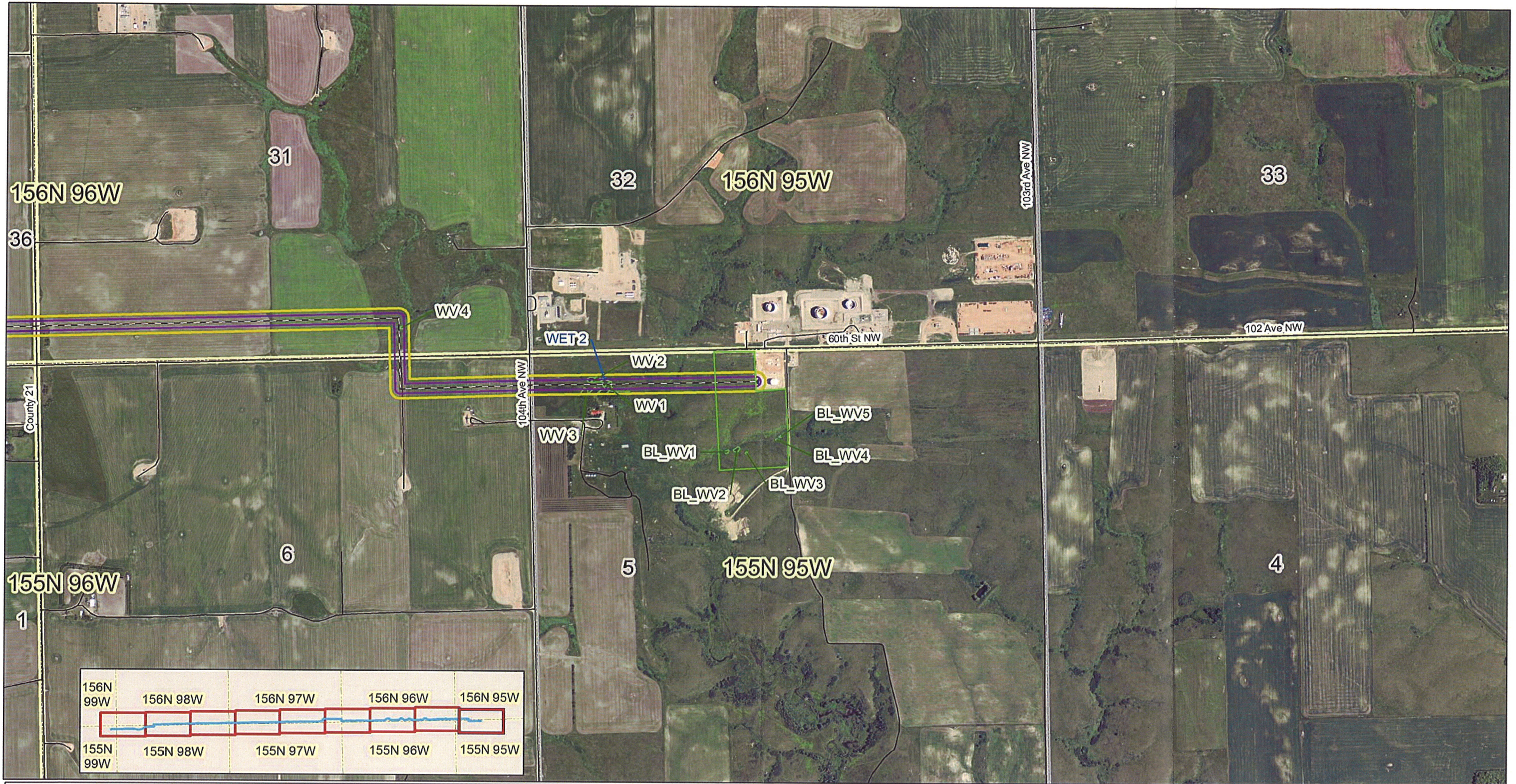
Please contact me at 701.258.6622 or [mcook@swca.com](mailto:mcook@swca.com) should you require additional clarification regarding SWCA's natural resource field surveys at the proposed Rangeland Pipeline, LLC-Beaver Lodge Metering Station site.

Regards,

A handwritten signature in black ink that reads "Michael Cook".

Michael Cook  
Natural Resources Lead-Bismarck





**Legend**

Field Surveyed/ Final Pipeline Alignment	Existing Road	Township/Range
Proposed Beaver Lodge Metering Station	Stream	Section Line
200-foot-wide Surveyed Area	Woody Vegetation	Wetland
100-foot-wide Construction ROW		

**SWCA**  
 ENVIRONMENTAL CONSULTANTS  
 116 North 4th Street  
 Suite 200  
 Bismarck, ND 58501  
 Phone: 701.258.6622  
 Fax: 701.258.5957  
 www.swca.com

0 0.15 0.3 0.6 0.9 1.2 Miles

Scale: 1:12,000  
 Base Map: Aerial Photo, National Agricultural Imagery Program, 2010  
 Williams County, North Dakota

UTM Zone 13N, NAD83, Meters  
 September 1, 2011

Page 9 of 9