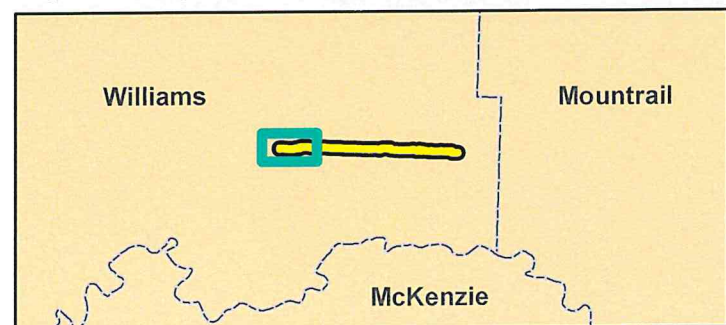

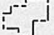




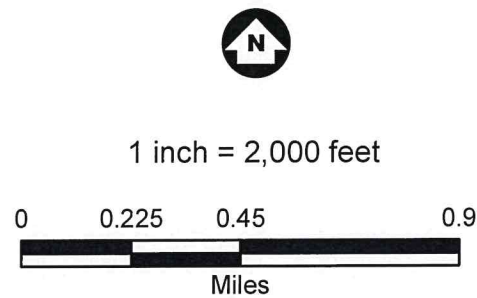
Barr Footer-ArcGIS 10.0, 2011-12-21 09:56 File: I:\Projects\541521\002\GIS\Maps\MISC\October 2011 General Route Maps Corridor.mxd User: kac



Image: ESRI Image Server, 2009, 1.0 Meter Resolution



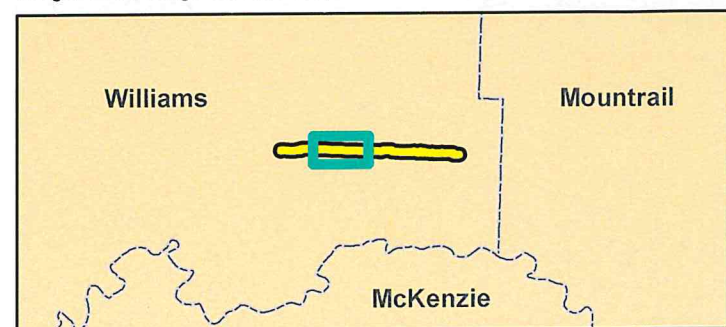
-  Beaver Lodge Meter Station
-  Municipal Boundaries
-  200' COLT Route Corridor (August 2011)
-  Milepost



Barr Footer: ArcGIS 10.0, 2011-12-21 09:56 File: I:\Projects\94521002\GIS\Maps\MISC\October 2011 General Route Maps Corridor.mxd User: kac2



Image: ESRI Image Server, 2009, 1.0 Meter Resolution



- Beaver Lodge Meter Station
- 200' COLT Route Corridor (August 2011)
- Municipal Boundaries
- Milepost



1 inch = 2,000 feet



Barr Footer: ArcGIS 10.0, 2011-12-21 09:56 File: I:\Projects\344521002\GIS\Maps\MISC\October_2011_General_Route_Maps_Corridor.mxd User: kac2

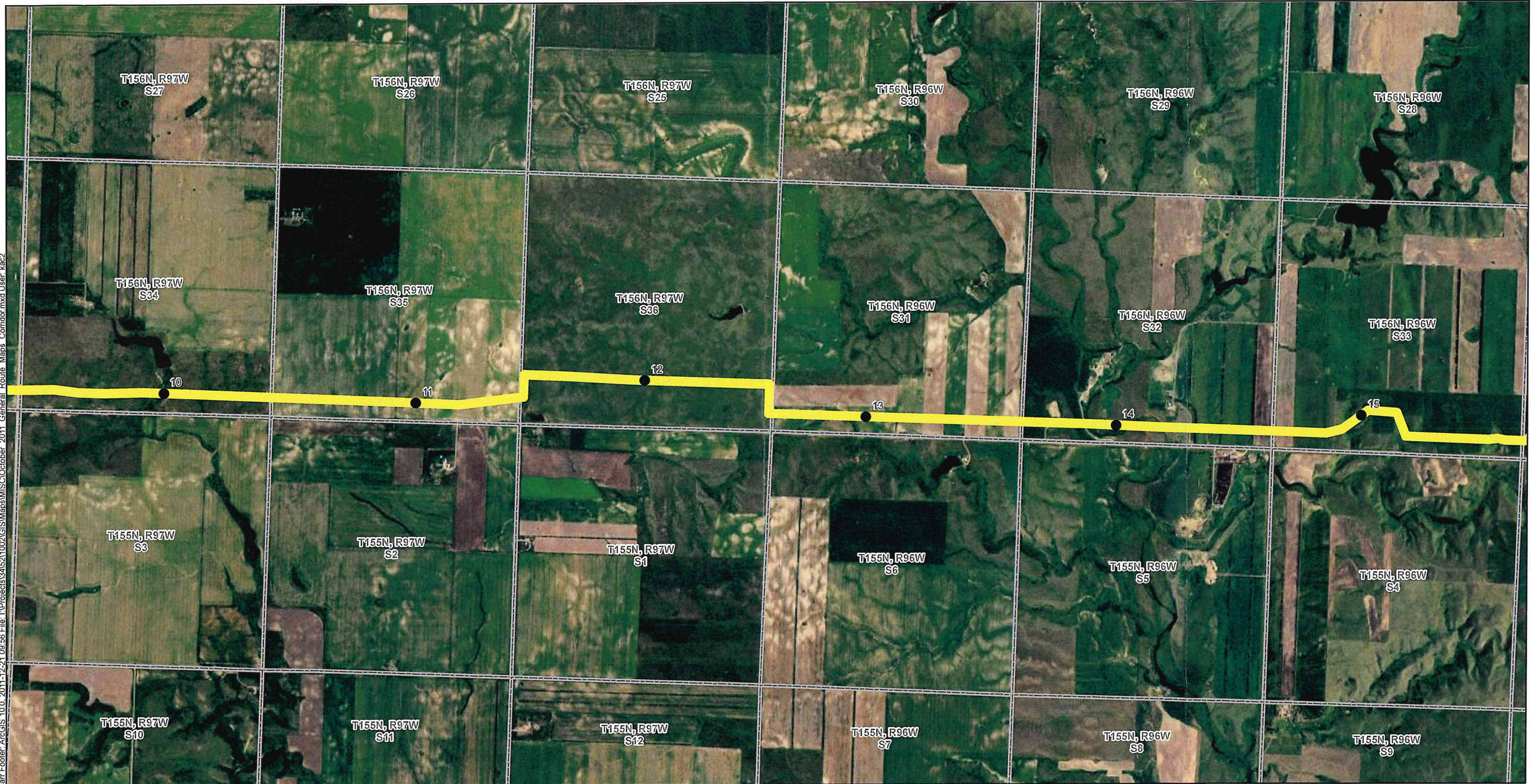
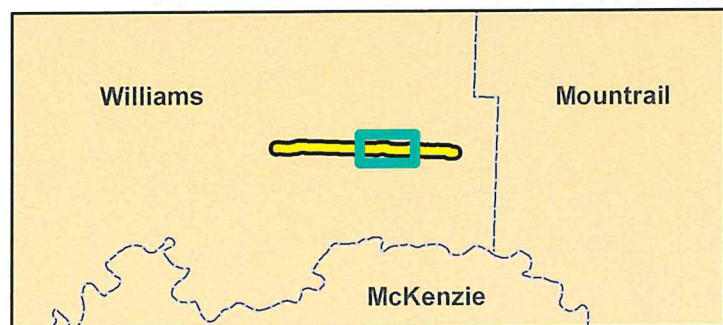
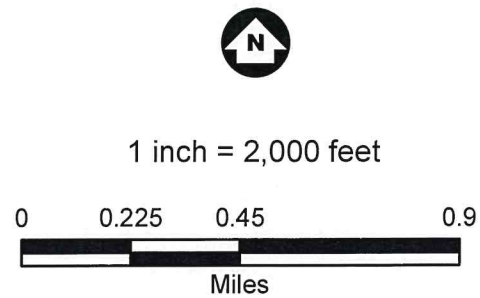
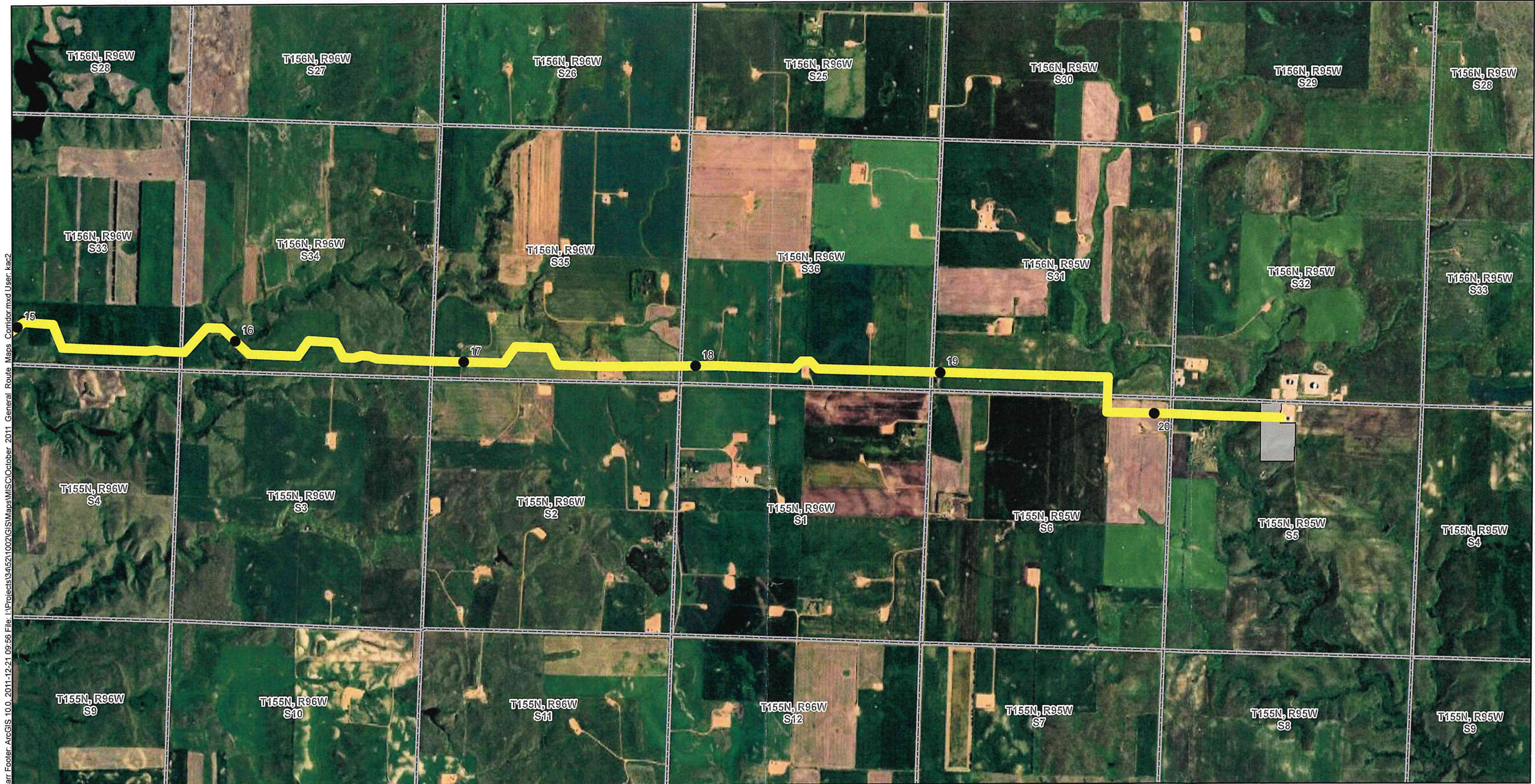


Image: ESRI Image Server, 2009, 1.0 Meter Resolution



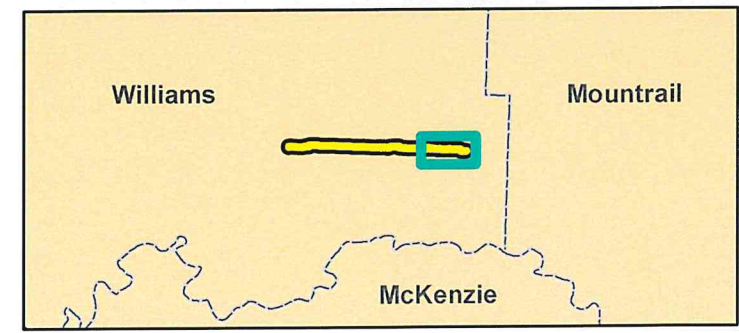
- | | | | |
|--|--|--|----------------------|
| | Beaver Lodge Meter Station | | Municipal Boundaries |
| | 200' COLT Route Corridor (August 2011) | | Milepost |





Barr Footer: ArcGIS 10.0, 2011-12-21 09:56 File: I:\Projects\34521002\GIS\Maps\MISC\October 2011 General Route Maps Corridor.mxd User: kac2

Image: ESRI Image Server, 2009, 1.0 Meter Resolution



- Beaver Lodge Meter Station
- 200' COLT Route Corridor (August 2011)
- Municipal Boundaries
- Milepost

