

**STATE OF NORTH DAKOTA
PUBLIC SERVICE COMMISSION**

**Allete, Inc.
Bison 2 Wind Project – Oliver / Morton Counties
Siting Application**

Case No. PU-11-57

NOTICE OF FILING AND NOTICE OF HEARING

May 18, 2011

On April 6, 2011, Minnesota Power, an operating division of Allete, Inc., (Allete) filed an application for a certificate of site compatibility to authorize construction of a 105 MW Bison 2 Wind Project consisting of 35 wind turbine generators and associated facilities in Morton and Oliver Counties, North Dakota, as shown on the attached map.

A **Public Hearing** on the application is scheduled to begin **July 7, 2011, at 10:00 a.m. CDT, at the Oliver County Courthouse, 11 West Main, Center, North Dakota 58530**. The issues to be considered are:

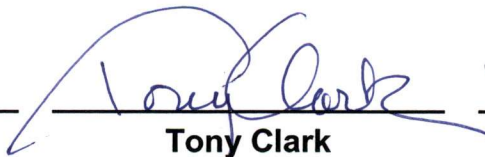
1. Will the location, construction, and operation of the proposed facilities produce minimal adverse effects on the environment and upon the welfare of the citizens of North Dakota?
2. Are the proposed facilities compatible with the environmental preservation and the efficient use of resources?
3. Will the proposed facility locations minimize adverse human and environmental impact while ensuring continuing system reliability and integrity and ensuring that energy needs are met and fulfilled in an orderly and timely fashion?

For more information contact the Public Service Commission, State Capitol, Bismarck, North Dakota 58505, 701-328-2400; or Relay North Dakota, 1-800-366-6888 TTY. If you require any auxiliary aids or services, such as readers, signers, or Braille materials, please notify the Commission.

PUBLIC SERVICE COMMISSION



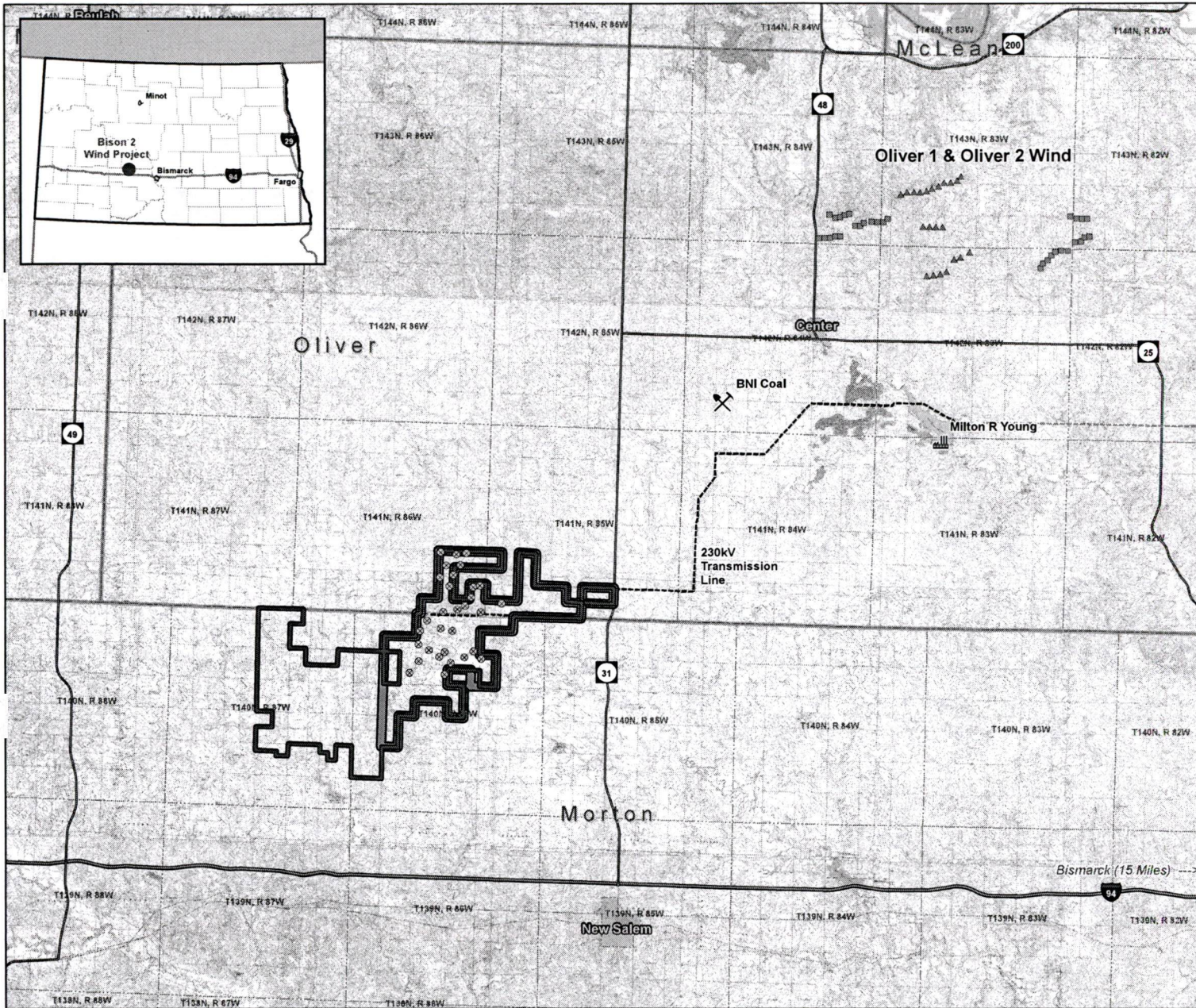
**Kevin Cramer
Commissioner**



**Tony Clark
Chairman**



**Brian P. Kalk
Commissioner**



- ⊗ Bison 1 Turbine Location
- ▲ Oliver 1 Wind Project Turbine Location
- Oliver 2 Wind Project Turbine Location
- ⚡ BNI Coal Mine
- 🏭 Milton R. Young Generation Station
- ⚡ 230kV Transmission Line
- ⚡ DC Transmission Line
- 🛣 Interstate Highway
- 🛣 State Highway
- 🗺 Preliminary Bison 2 Project Boundary
- 🗺 Bison 1 Project Boundary
- 🏘 Municipality
- 🗺 County Boundary

Data Sources:
 Turbines, Project Boundary - Minnesota Power
 Roads, Administrative Boundaries - ND DOT
 Topo Map - USGS DRG

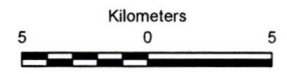
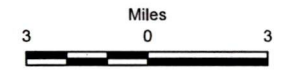


Exhibit 1
 STUDY AREA SELECTION MAP
 Bison 2 Wind Project
 Minnesota Power
 Morton & Oliver Counties, North Dakota