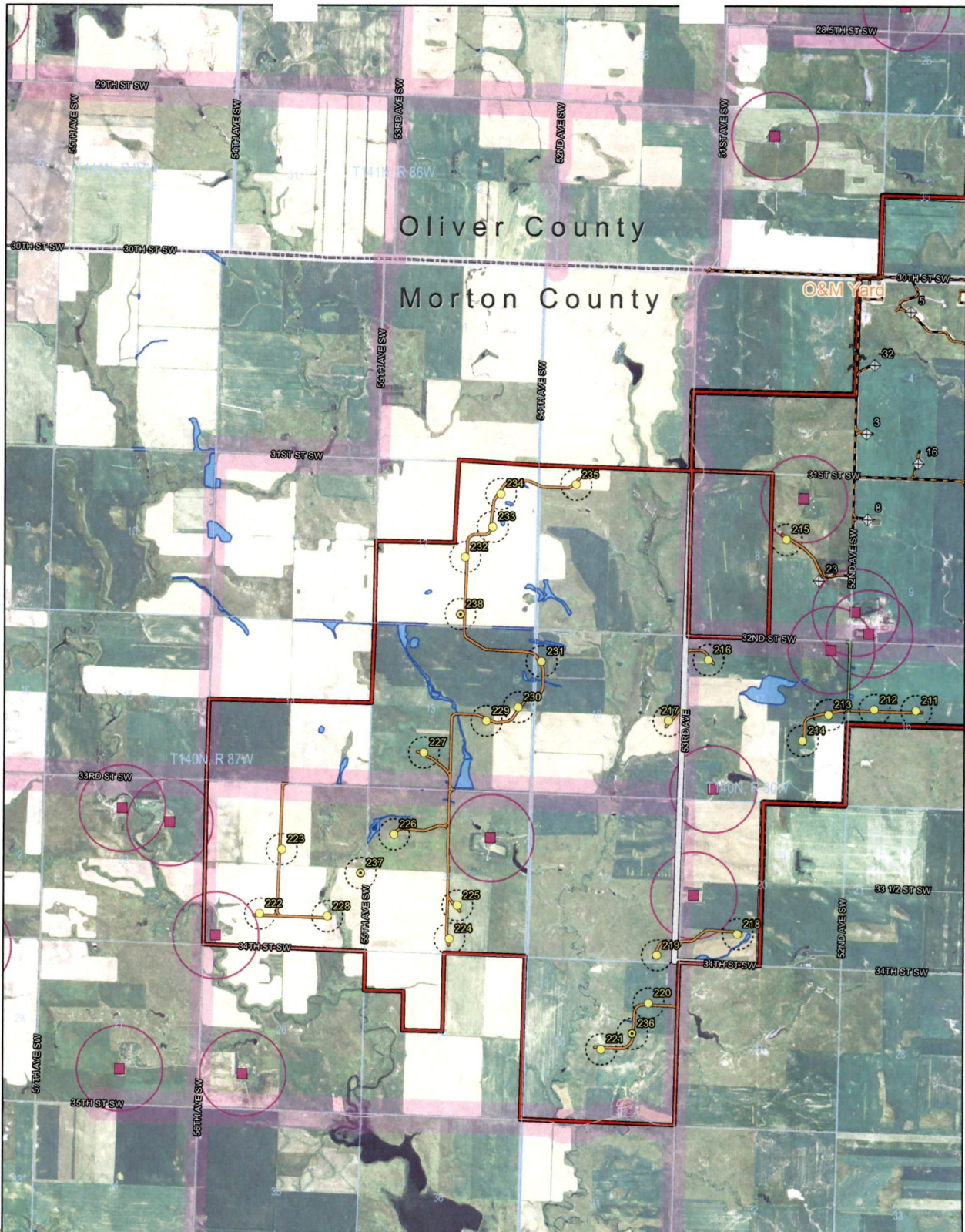






Case No. PU-11-57
Minnesota Power
Late-filed Exhibit 6
Updated Map and Revised Project Boundary
Revision 1 dated July 8, 2011
Figures 1 and 2



<ul style="list-style-type: none"> ● Bison 2 Turbine Location (5/19/2011 Coords.) ● Bison 2 Alternate Location ⊕ Bison 1 Turbine Location ■ Field Verified Residence — Bison 2 Access Road & Crane Path Layout — Bison 2 Access Road Layout — Bison 1 Access Road 	<ul style="list-style-type: none"> ⊕ Bison 1 Project Boundary ⊕ Bison 2 Project Boundary (Revised Area: 14489 Acres) ⊕ Bison 1 Delineated Wetland ⊕ Bison 2 Wetland Determination ⊕ 500ft Turbine Setback ⊕ 550ft Road Setback ⊕ 1400ft Occupied Dwelling Setback ⊕ County Boundary 	 <p>Feet</p> 
---	---	---

Data Sources:
 Preliminary Project Data - MP
 Residential Structures, Setbacks - Barr/MP
 Wetlands - HDR, Barr
 Imagery - NAIP, 2010

A WIND ENERGY INITIATIVE OF MINNESOTA POWER IN NORTH DAKOTA

Figure 2
 - Revision 1 - 7/8/2011 -
 OVERVIEW, EXCLUSION,
 AND AVOIDANCE AREAS MAP
 - WESTERN PORTION -
 Bison 2 Wind Project
 Minnesota Power
 Morton & Oliver Counties, North Dakota

I:\Projects\11002\MapDocs\Map2\Barr\2\Drawings\Wind\Tribal\Barr.mxd
 11/15/2011 10:58:15 AM