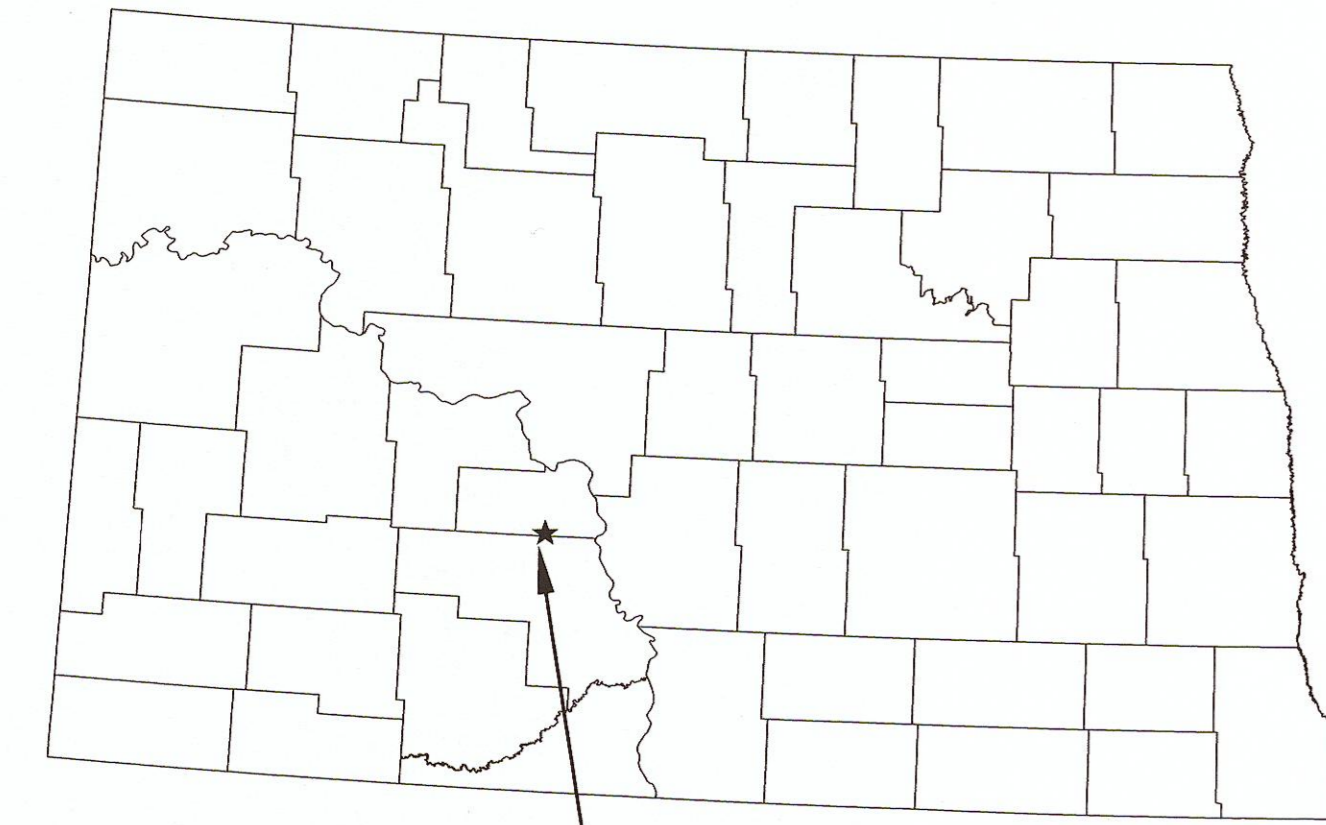


BISON 2 WIND PROJECT

MORTON AND OLIVER COUNTIES, NORTH DAKOTA

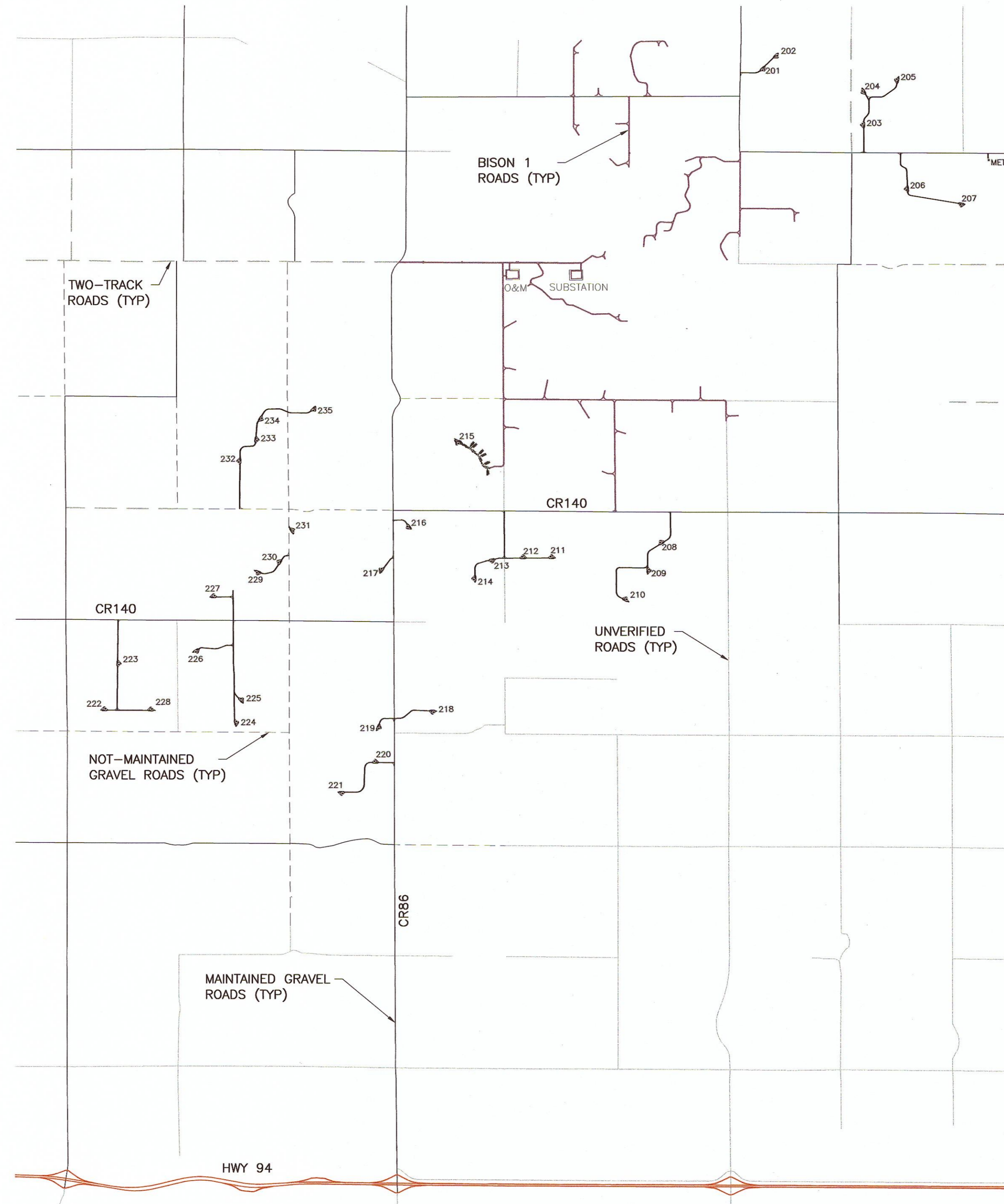
SHEET INDEX

SHEET NO.	TITLE
C-01	Project Location and Sheet Index
C-02	Overall Site Plan and Sheet Layout
C-03	Access Roads and Turbine Layout Sections and Details
C-04	Miscellaneous Sections and Details
C-05	Erosion Control Features Sections and Details
C-06	Specifications
C-07	Plan and Profile Alignment A1 Sta. 0+00 to 56+00
C-08	Plan and Profile Alignment A1 Sta. 56+00 to 112+00
C-09	Plan and Profile Alignment A1 Sta. 112+00 to 168+00
C-10	Plan and Profile Alignment A1 Sta. 168+00 to 176+50
C-11	Plan and Profile Alignment A5 Sta. 0+00 to 11+01
C-12	Plan and Profile Alignment A6 Sta. 0+00 to 42+72
C-13	Plan and Profile Alignment A7 Sta. 0+00 to 25+68
C-14	Plan and Profile Alignment B1 Sta. 0+00 to 50+27
C-15	Plan and Profile Alignment B2 Sta. 0+00 to 20+15
C-16	Plan and Profile Alignment B3 Sta. 0+00 to 7+31
C-17	Plan and Profile Alignment C Sta. 0+00 to 37+64
C-18	Plan and Profile Alignment D Sta. 0+00 to 11+63
C-19	Plan and Profile Alignment E Sta. 0+00 to 21+17
C-20	Plan and Profile Crane Path From Alignment C to F
C-21	Plan and Profile Crane Path From Alignment C to F
C-22	Plan and Profile Alignment F Sta. 0+00 to 9+44
C-23	Plan and Profile Alignment G Sta. 0+00 to 10+62
C-24	Plan and Profile Alignment H Sta. 0+00 to 20+87
C-25	Plan and Profile Crane Path From Alignment G to H
C-26	Plan and Profile Alignment I1 Sta. 0+00 to 22+29
C-27	Plan and Profile Alignment I2 Sta. 0+00 to 34+00
C-28	Plan and Profile Alignment I2 Sta. 34+00 to 46+28
C-29	Plan and Profile Alignment J1 Sta. 0+00 to 35+08
C-30	Plan and Profile Alignment J2 Sta. 0+00 to 20+00
C-31	Plan and Profile Crane Alignment J2 Sta. 20+00 to 35+00
C-32	Plan and Profile Alignment K Sta. 0+00 to 21+34
C-33	Plan and Profile Crane Path Alignment From K to L1
C-34	Plan and Profile Alignment L1 Sta. 0+00 to 32+02
C-35	Plan and Profile Alignment L2 Sta. 0+00 to 20+91
C-36	Plan and Profile Alignment M Sta. 0+00 to 48+05
C-37	Plan and Profile Crane Path Alignment From L1 TO M



PROJECT LOCATION

LOCATION MAP



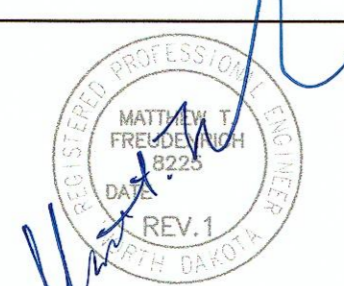
VICINITY MAP

LEGEND

TURBINE ACCESS ROAD	
CRANE PATH	
TEMPORARY TURNING RADIUS	
TURBINE NUMBER AND LOCATION	
CULVERT NUMBER AND LOCATION	
SECTION LINE	
OVERHEAD ELECTRIC	
EXISTING 10ft MAJOR CONTOURS	
EXISTING 2ft MINOR CONTOURS	
PROPOSED 10ft MAJOR CONTOURS	
PROPOSED 2ft MINOR CONTOURS	
COLLECTION LINE	
JUNCTION BOX	

EXTERNAL REFERENCE:
34331007-BASE-C3D-DESIGN-ROADS-AS-BUILT.DWG

NO.	BY	CHK.	APP.	DATE	REVISION DESCRIPTION
A	DMD	CAD	JXB	05/27/11	60 PERCENT SUBMITTAL
B	CAD	CAD	JXB	07/01/11	90 PERCENT SUBMITTAL
0	DMD	CAD	JXB	08/12/11	ISSUED FOR CONSTRUCTION
1	NJG			1/29/13	CONSTRUCTION REVISIONS



CLIENT	DATE
BARR ENGINEERING CO.	05/27/11
CONSTRUCTION	08/12/11
PERMITTING	
RECORD	

BARR
Project Office:
BARR ENGINEERING CO.
4700 WEST 77TH STREET
MINNEAPOLIS, MN.
55435-4803
Corporate Headquarters:
Minneapolis, Minnesota
Ph: 1-800-632-2277
Fax: (952) 832-2601
www.barr.com

Scale	AS SHOWN
Date	05/20/11
Drawn	DMD
Checked	JXB
Designed	CAD
Approved	JXB

A WIND ENERGY INITIATIVE OF MINNESOTA POWER IN NORTH DAKOTA

BISON 2 WIND PROJECT
MORTON & OLIVER COUNTIES, NORTH DAKOTA

LOCATION AND VICINITY MAPS,
LEGEND AND SHEET INDEX

BARR PROJECT No.	34/33-1007
CLIENT PROJECT No.	
DWG. No.	C-01
REV. No.	1