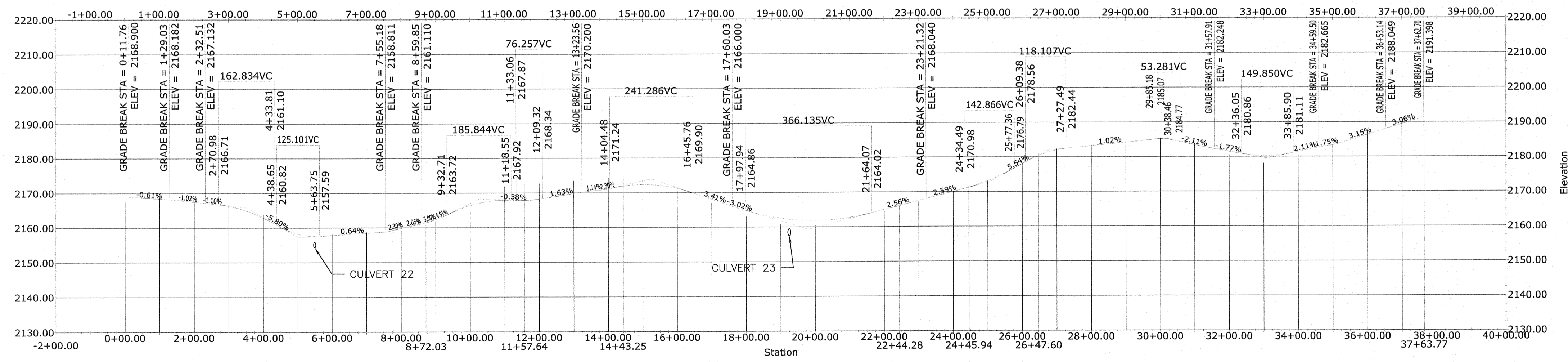


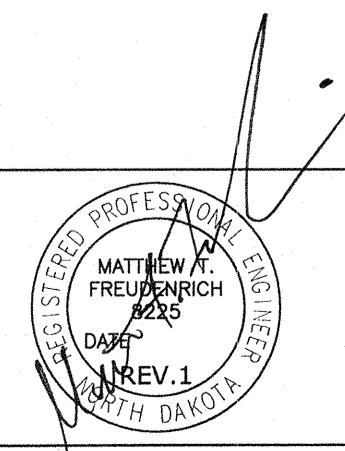
1 PLAN: ALIGNMENT C



2 PROFILE: ALIGNMENT C

EXTERNAL REFERENCE:
34331007-BASE-C3D-DESIGN-
ROADS-AS-BUILT.DWG

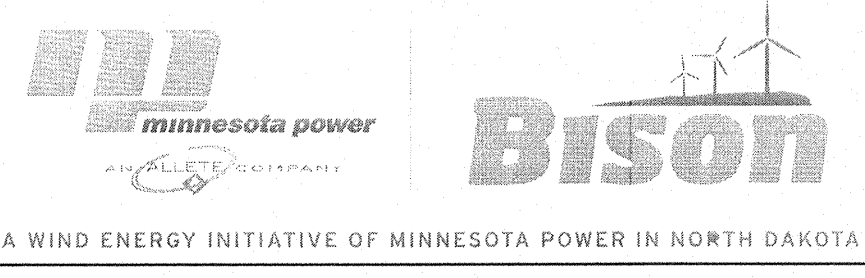
| NO. | BY | CHK. | APP. | DATE | REVISION DESCRIPTION |
|-----|-----|------|------|----------|-------------------------|
| A | DMD | CAD | JXB | 05/27/11 | 60 PERCENT SUBMITTAL |
| B | CAD | CAD | JXB | 07/01/11 | 90 PERCENT SUBMITTAL |
| 0 | DMD | CAD | JXB | 08/12/11 | ISSUED FOR CONSTRUCTION |
| 1 | NJC | | | 2/27/13 | CONSTRUCTION REVISIONS |



| CLIENT | DATE |
|-----------------|---------------|
| 05/27/11 | 01/11 |
| CONSTRUCTION | 08/12/11 |
| PERMITTING | |
| RECORD | |
| RELEASED TO/FOR | A B C 0 1 2 3 |
| DATE RELEASED | |

BARR
Project Office:
BARR ENGINEERING CO.
4700 WEST 77TH STREET
MINNEAPOLIS, MN.
55435-4803
Corporate Headquarters:
Minneapolis, Minnesota
Ph: 1-800-632-2277
Fax: (952) 832-2601
www.barr.com

| Scale | AS SHOWN |
|----------|----------|
| Date | 05/20/11 |
| Drawn | DMD |
| Checked | JXB |
| Designed | CAD |
| Approved | JXB |



BISON 2 WIND PROJECT
MORTON & OLIVER COUNTIES, NORTH DAKOTA
PLAN AND PROFILE
ALIGNMENT C - STA. 0+00 TO 37+64

| BARR PROJECT No. | CLIENT PROJECT No. |
|------------------|--------------------|
| 34/33-1007 | |
| DWG. No. | REV. No. |
| C-15 | 1 |