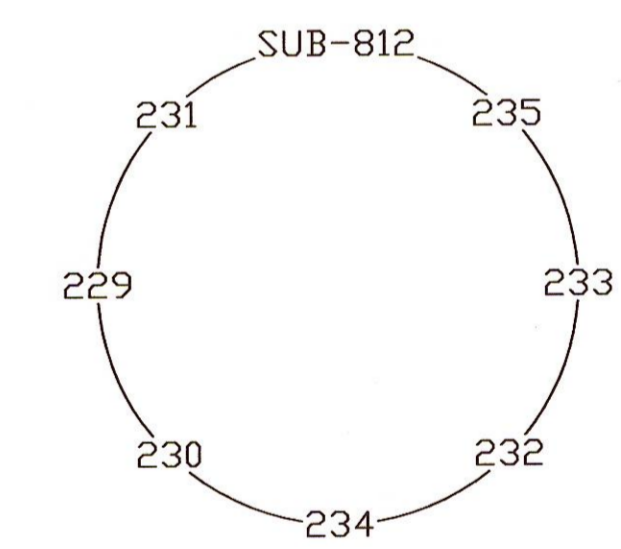


FIBER TOPOLOGY RING



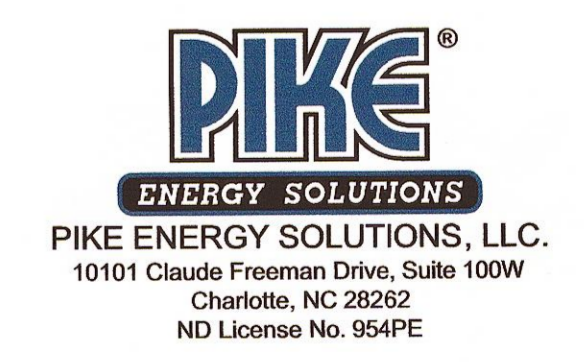
LEGEND
 X FUSION SPLICE
 — FIBERS 1-12
 - - - FIBERS 13-24

FIBER COLOR LEGEND

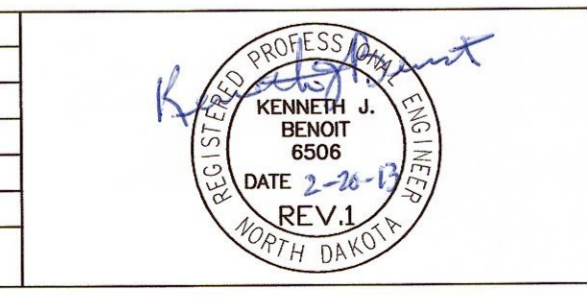
FIBER #	COLOR
1	BLUE
2	ORANGE
3	GREEN
4	BROWN
5	SLATE
6	WHITE (SHOWN AS DARK GRAY)
7	RED
8	BLACK
9	YELLOW
10	PURPLE
11	ROSE
12	AQUA

NOTE:
 1. ALL FIBER AND SPLICING MUST ADHERE TO SIEMENS TEST SPECIFICATION FOR FIBER OPTIC INFRASTRUCTURE.

FIBERS 13-24 FOLLOW THE SAME COLORS AS 1-12



NO.	BY	CHK.	APP.	DATE	REVISION DESCRIPTION
A	BNK	RJC	CSF	7/8/11	90% DELIVERABLE
B	EHK	RJC	CSF	7/19/11	REVISED
C	BNK	RJC	CSF	7/21/11	REVISED PER CLIENTS COMMENTS
O	BNK	RJC	CSF	8/4/11	ISSUED FOR CONSTRUCTION
1	NJG	RJC	CSF	11/1/12	CONSTRUCTION REVISIONS, NO CHANGES



CLIENT	7/8/11/7/9/11/7/21/11/8/4/11
BID	
CONSTRUCTION PERMITTING	
RELEASED TO/FOR	A B C O 1 2 3
DATE RELEASED	

BARR ENGINEERING CO.
 4700 WEST 77TH STREET
 MINNEAPOLIS, MN.
 55435-4803
 Ph: 1-800-632-2277
 Fax: (952) 832-2601
 www.barr.com

Scale	N.T.S.
Date	05/27/11
Drawn	RJG
Checked	CEG
Designed	RJG
Approved	JLM



BISON 2 WIND PROJECT
 MORTON & OLIVER COUNTIES, NORTH DAKOTA
 FIBER OPTIC SCHEMATIC DETAIL FEEDER 812

BARR PROJECT No.	34/33-1007
CLIENT PROJECT No.	
DWG. No.	E-FL-15
REV. No.	1