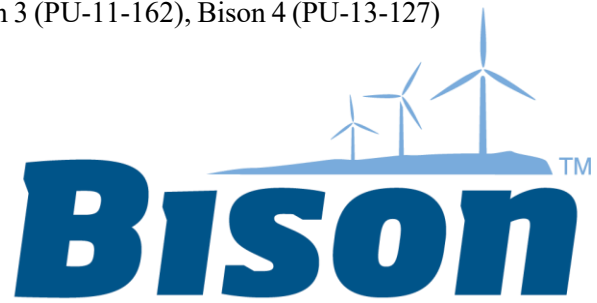


Minnesota Power 2025 Wildlife Impact Report **For the Bison 1, 2, 3 & 4 Wind Facilities**

Bison 1 (PU-09-151), Bison 2 (PU-11-57), Bison 3 (PU-11-162), Bison 4 (PU-13-127)



230 PU-09-151 Filed 01/28/2026 Pages: 15
2025 Bison Annual Wildlife Impact Report

Allete, Inc.

169 PU-11-57 Filed 01/28/2026 Pages: 15
2025 Bison Annual Wildlife Impact Report

Allete, Inc.

158 PU-11-162 Filed 01/28/2026 Pages: 15
2025 Bison Annual Wildlife Impact Report

Allete, Inc.

196 PU-13-127 Filed 01/28/2026 Pages: 15
2025 Bison Annual Wildlife Impact Report

Allete, Inc.



Minnesota Power 2025 Wildlife Impact Report

Contents

Minnesota Power 2025 Wildlife Incident Report. Pages 3-5

Figure 1-3 - Bison 1, 2, 3 & 4 Project Area

Appendix A- Wildlife Impact Reports

Appendix B- Wildlife Inspection Table

Introduction

Throughout 2025 Minnesota Power, an operating division of ALLETE, Inc., has been operating wind energy conversion facilities (Facilities) in west central North Dakota. As part of Minnesota Power's commitment to environmental stewardship and continual evaluation of facility impacts, regular wildlife inspections are performed at its Facilities throughout the year. The following is Minnesota Power's 2025 Annual Wildlife Impact Report which summarizes the wildlife inspection results for the Bison 1, 2, 3 and 4 Facilities in North Dakota.

In 2025 Minnesota Power's Bison 1 (81.8 MW), Bison 2 (105 MW), Bison 3 (105 MW) and Bison 4 (201.6 MW) Facilities were all operational. The four Facilities combine for a total of 164 turbines. A Bison 1, 2, 3 & 4 Facility (Bison) map is included as Figure 1-3. This annual Wildlife Impact Report covers all Bison Facility turbines and associated infrastructure.

This report has been developed for Minnesota Power's use and is distributed to personnel or agencies outlined in this report. The Minnesota Power 2025 Wildlife Impact Report is reviewed by Minnesota Power environmental staff, Bison Facility personnel and management. It is used to analyze potential avian or bat impacts to determine if adaptive management measures are required for either the entire Facility or individual Facility structures.

Minnesota Power provides copies of this report to the North Dakota Public Service Commission under each project Docket Number to be incorporated into their records. A Wildlife Impact Report is generated by January 31st of each year for the operational life of Minnesota Power's Bison Facilities.

Inspections/Data Collection

This 2025 Wildlife Impact Report includes data collected from all 164 operational turbines at the Bison Facility, as well as data collected from the Bison Operations and Maintenance (O&M) facility, the Bison and Tri-County Substations (substations) and four permanent meteorological (met) towers. Each turbine, O&M facility and substation are inspected for avian and bat mortality by ALLETE personnel or contractors, at a frequency of at least once per month. Some structures, such as the substations and O&M facility, were inspected at a higher frequency. When a carcass is found it is left at its location, photographed and a Bison Wildlife Impact Form is completed.

Each Bison Wildlife Impact Report Form and associated photos were entered into Minnesota Power's 2025 Wildlife Incident Database. Those results are summarized in this report. Individual fatality information can be found in the Bison Wildlife Impact Report Forms located in Appendix A. In addition, monthly inspection cycle results for 2025 are included in the Wildlife Inspection Table (Appendix B).

Minnesota Power 2025 Wildlife Impact Report

The total wildlife fatalities for 2025, totaled three. Three avian fatalities were recorded. Specific data for each incident and species can be found in the Bison Wildlife Impact Reports (Appendix A).

Results

After reviewing the inspection/fatalities records, no turbine, structure or location showed an elevated risk for avian or bat mortality when compared to surrounding Bison Facility structures. Mortality appears to be dispersed throughout the Bison Facility. Avian carcasses were more prevalent during the summer; however an increase was not observed during fall migration when avian species are typically most vulnerable to collision. No bats were discovered in 2025. The 2025 results are as shown in Figure 1-1 and 1-2 below.

Figure 1-1:
2025 Monthly Distribution of Avian Carcasses

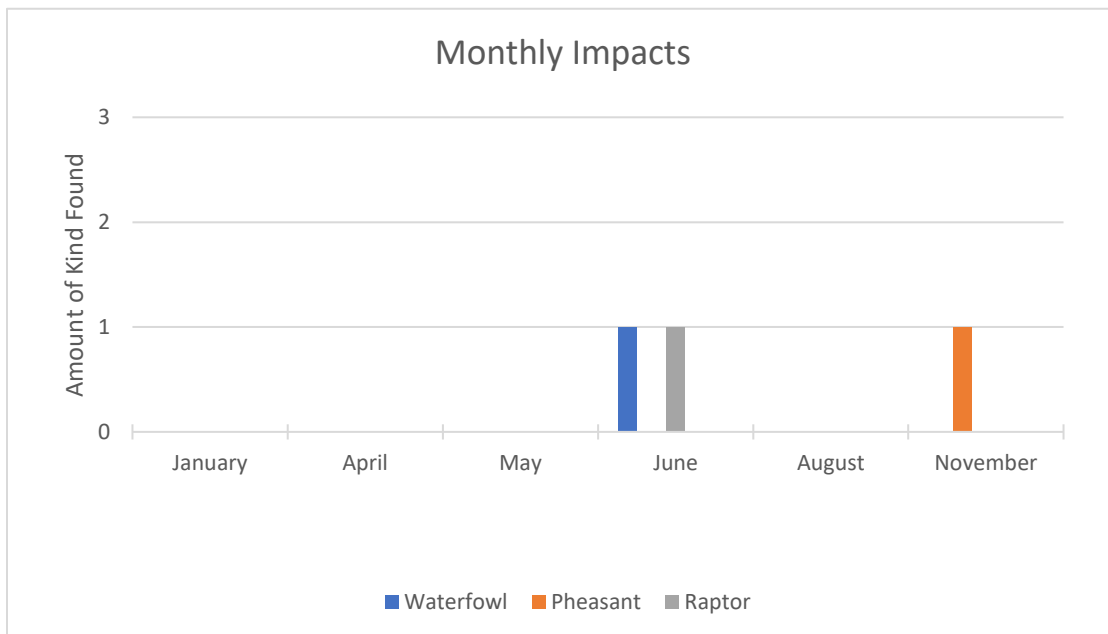


Figure 1-1: This figure illustrates the monthly distribution of avian carcass discoveries. The data is categorized by month, providing a comprehensive overview of the temporal patterns in carcass findings.

Figure 1-2:
2025 Total Avian and Bat Carcasses

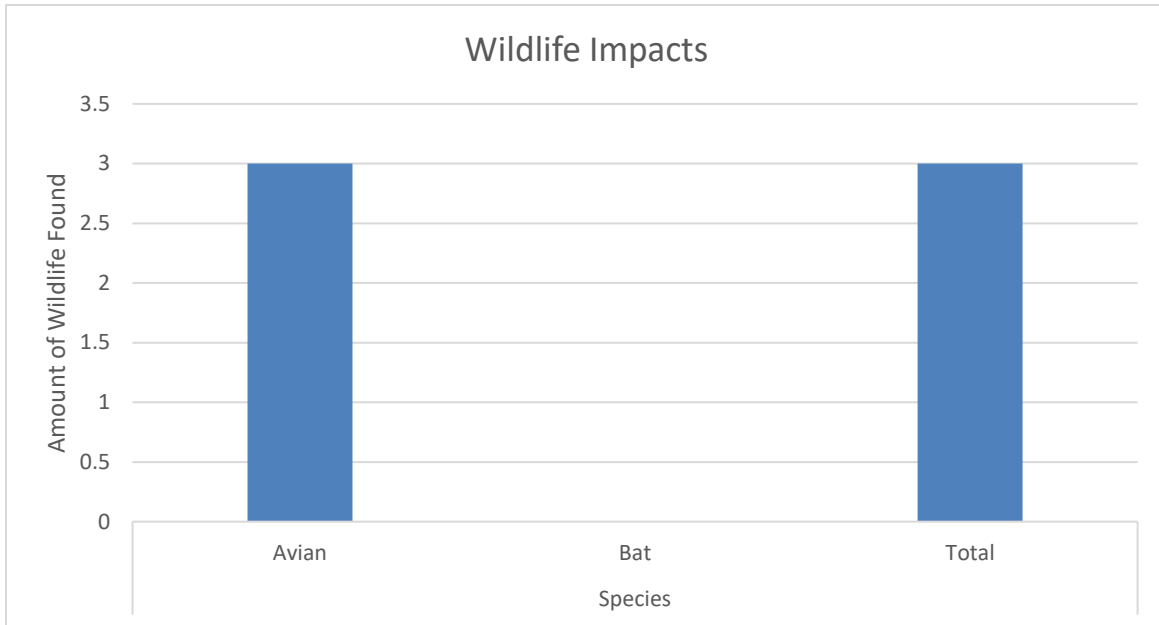


Figure 1-2: This figure presents the total number of avian and bat carcass discoveries.




Based on the data available for Minnesota Power’s Bison Facilities, there is no evidence that would indicate additional adaptive management activities should occur. It appears, from the data provided, that the Bison Facility poses a low risk to surrounding and migrating avian and bat populations.

Figure 1-3

-Bison 1, 2, 3 & 4 Project Area

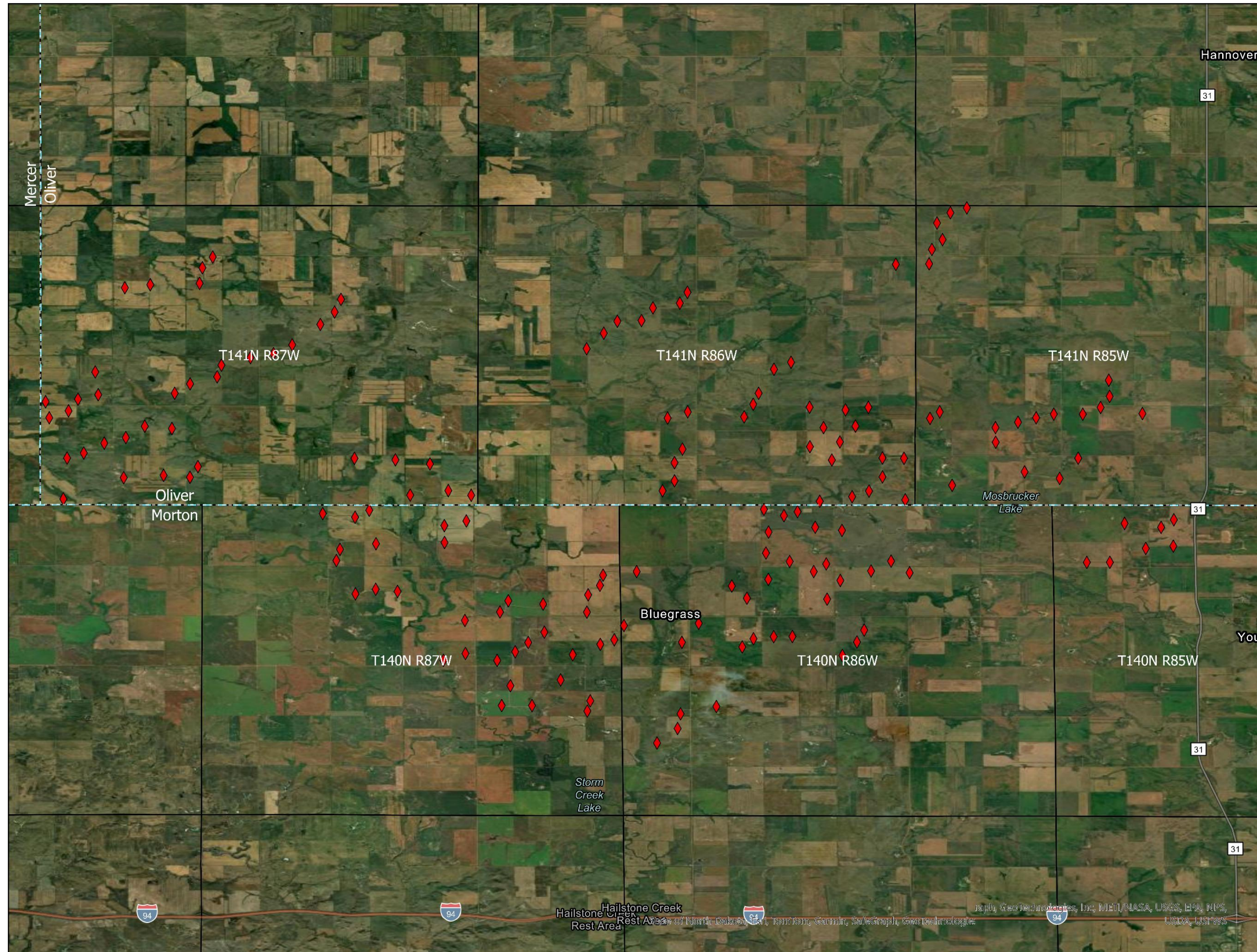
Minnesota Power Bison 1, 2, 3 & 4 Project Area

Figure 1-3

-  Bison Turbine Location
-  Township and Range
-  County Boundaries



0 1.5 3 Miles
For Environmental Review Purposes only



Appendix A

-Wildlife Impact Reports



ALLETE Wildlife Impact Report Form

<u>ALLETE Wind Facility Name</u>		Bison IV	
<u>Entry Number</u> 6-2025(1)	<u>Date:</u> 6-4-2025	<u>Time of Day</u> 10:45 am	<u>Injury/Fatality -</u> Fatality
<u>Notification Given to:</u> Phillip Miller	<u>Date Notification Was Given</u> 6-4-2025	<u>Structure #</u> 412	<u>Latitude/Longitude</u> 47.0621239, -101.5049916
<u>Location Remarks:</u> Approximately 330 feet South-Southwest of Turbine #412			
<u>Physical Condition:</u> Intact, decayed, injured, unrecognizable? Intact, decayed	<u>Estimated Time Since Death:</u> 5 days	<u>Estimated Date of Injury:</u> 5-30-2025	<u>Name of Respondent:</u> Ben Reister
<u>Other Notes:</u>			

ELM Follow up/Confirmation

<u>Date:</u> 6-4-2025	<u>Perillon Entry Date:</u> 6/4/2025	<u>Responding ELM staff:</u> Alex Luman
<u>Species Confirmation:</u> Bald Eagle	<u>Threatened or Endangered:</u> Neither, Protected by Bald and Golden Eagle Protection Act	<u>Agencies contacted:</u> USFWS
<u>Action Items:</u> USFWS coordination	<u>Carcass Preservation actions:</u> Black plastic bin has been placed over the carcass with rocks on top to prevent scavenging and preserve carcass.	<u>Other Notes:</u> USFWS Special Agent Kevin Downs responded to the incident and retrieved the eagle on 06/06/2025



ALLETE Wildlife Impact Report Form

<u>ALLETE Wind Facility Name</u>			
<u>Entry Number</u> 6-2025(2)	<u>Date:</u> 6/9/25	<u>Time of Day</u> 9:00	<u>Injury/Fatality</u> Fatality
<u>Notification Given to</u> 3200	<u>Date Notification Was Given</u> 6/9/25	<u>Structure #</u> 328	<u>Latitude/Longitude</u> 46.984096 -101.657238
<u>Location Remarks:</u> Laying near transformer			
<u>Physical Condition:</u> Decaying	<u>Estimated Time Since Death:</u> 1 week	<u>Estimated Date of Injury:</u> 1 week	<u>Name of Respondent:</u> Ryan Zachmeier (ARR)
<u>Other Notes:</u>			

ELM Follow up/Confirmation

<u>Date:</u> 06/09/2025	<u>Perillon Entry Date:</u> 06/09/2025	<u>Responding ELM staff:</u> Alexander Luman
<u>Species Confirmation:</u> Mallard	<u>Threatened or Endangered:</u> Neither	<u>Agencies contacted:</u> None
<u>Action Items:</u> None	<u>Carcass Preservation actions:</u> None	<u>Other Notes:</u>



ALLETE Wildlife Impact Report Form

<u>ALLETE Wind Facility Name</u>			
<u>Entry Number</u> 11-2025(1)	<u>Date:</u> 11/3/25	<u>Time of Day</u> 11:00	<u>Injury/Fatality</u> Fatality
<u>Notification Given to</u> 3200	<u>Date Notification Was Given</u> 11-3-25	<u>Structure #</u> 228	<u>Latitude/Longitude</u> 46.923084 -101.621927
<u>Location Remarks:</u> Laying near transformer			
<u>Physical Condition:</u> Deceased	<u>Estimated Time Since Death:</u> 3 Days	<u>Estimated Date of Injury:</u> 10-31-25	<u>Name of Respondent:</u> Brant Nettleton
<u>Other Notes:</u>			

ELM Follow up/Confirmation

<u>Date:</u> 11/3/25	<u>Perillon Entry Date:</u> 11/3/25	<u>Responding ELM staff:</u> Claudia Ciganik
<u>Species Confirmation:</u> Pheasant	<u>Threatened or Endangered:</u> No	<u>Agencies contacted:</u> None
<u>Action Items:</u> None	<u>Carcass Preservation actions:</u> None	<u>Other Notes:</u> None

Appendix B

-Wildlife Inspection Table

Minnesota Power 2025 Wildlife Impact Table

Bison 1, 2, 3, 4 and Associated Facilities

Turbine #	January	February	March	April	May	June	July	August	September	October	November	December
1												
2												
3												
4												
5												
6												
7												
8												
9												
10												
11												
12												
13												
14												
15												
16												
17												
18												
19												
20												
22												
23												
25												
26												
27												
28												
29												
30												
31												
32												
33												
201												
202												
203												
204												
205												
206												
207												
208												
209												
210												
211												
212												
213												
214												
215												
216												
217												
218												
219												
220												
221												
222												
223												
224												
225												
226												
227												
228											11/03/2025	
229												
230												
231												
232												
233												
234												
235												
301												
302												
303												
304												
305												
306												
307												
308												
309												
310												
311												
312												
313												
314												
315												
316												
317												
318												

Appendix B

Turbine #	January	February	March	April	May	June	July	August	September	October	November	December
319												
320												
321												
322												
323												
324												
325												
326												
327												
328						06/09/2025						
329												
330												
331												
332												
333												
334												
335												
401												
402												
403												
404												
405												
406												
407												
408												
409												
410												
411												
412						06/04/2025						
413												
414												
415												
416												
417												
418												
419												
420												
421												
422												
423												
424												
425												
426												
427												
428												
429												
430												
431												
432												
433												
434												
435												
436												
437												
438												
439												
440												
442												
443												
444												
445												
446												
447												
448												
449												
450												
451												
452												
453												
454												
455												
456												
445												
446												
447												
448												
449												
450												
451												
452												
453												
454												
455												
456												
457												
458												
459												
460												
461												
462												
463												
464												

Appendix B

Turbine #	January	February	March	April	May	June	July	August	September	October	November	December
O&M												
Met Tower 1												
Met Tower 2												
Met Tower 3												
Met Tower 4												
Tri County Substation												
Bison Substation												