

**From:** [Schumacher, John D.](#)  
**To:** [William McCarthy](#)  
**Subject:** Bear Paw Energy - Garden Creek Pipeline - Route Revision  
**Date:** Tuesday, February 15, 2011 10:01:49 AM

---

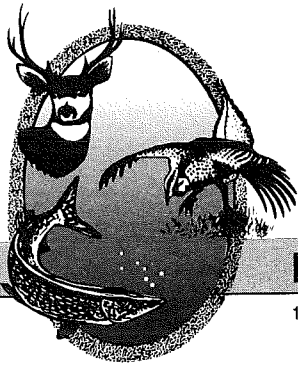
Mr. McCarthy,

The North Dakota Game and Fish Department has reviewed the revised pipeline route and we have no additional concerns. Our original comments are still applicable.

If you have any questions, please let me know.

john

**JOHN SCHUMACHER  
RESOURCE BIOLOGIST  
ND GAME AND FISH DEPT  
701.328.6321**



"VARIETY IN HUNTING AND FISHING"

**NORTH DAKOTA GAME AND FISH DEPARTMENT**

100 NORTH BISMARCK EXPRESSWAY BISMARCK, NORTH DAKOTA 58501-5095 PHONE 701-328-6300 FAX 701-328-6352

January 26, 2011

William F. McCarthy  
Project Manager  
E3 Environmental, LLC  
817 Vandalia Street, Suite 100  
St. Paul, MN 55114

Dear Mr. McCarthy:

RE: Bear Paw Energy — Garden Creek NGL Pipeline Project

Bear Paw Energy LLC is proposing to construct approximately 55 miles of 12-inch diameter natural gas liquids pipeline in McKenzie County, North Dakota and Richland County, Montana.

Our primary concern with this project is the possible disturbance of native prairie and wooded draws associated with construction of the pipeline and access roads. We ask that work within these areas be avoided to the extent possible, every effort be made to prevent destruction of woody vegetation, and disturbed areas be reclaimed to pre-project conditions.

The pipeline route will cross Cherry Creek, a Class III fishery. We recommend that this stream be crossed by directional boring if possible. If this method is not feasible, construction should not take place within the waterway between April 15 and June 1, and controls should be implemented to minimize erosion and sedimentation.

The National Wetland Inventory indicates various wetlands within the proposed project corridor. Steps should be taken to protect any wetlands that cannot be avoided, no alterations should be made to existing drainage patterns, and above-ground appurtenances should not be placed in wetland areas.

Sincerely,

A handwritten signature in cursive script that reads "Paul Schadewald".

Paul Schadewald  
Chief  
Conservation & Communication Division

js



December 30, 2010

Mr. Paul Schadewald, Chief  
Conservation and Communication Division  
North Dakota Game and Fish Department  
100 N. Bismarck Expressway  
Bismarck, ND 58501-5095

RE: Bear Paw Energy – Garden Creek NGL Pipeline Project  
State Conservation Priority Species Consultation

Bear Paw Energy, LLC (BPE), a subsidiary of ONEOK Partners, LP, Tulsa, Oklahoma, has proposed the Garden Creek NGL Pipeline Project. This project would entail the construction of approximately 55 miles of 12-inch diameter pipeline designed to transport natural gas liquids (NGL) to various delivery points along the route. This project is currently scheduled to begin construction in July 2011 and will require a minimum of 90 days to complete with restoration to immediately follow. The proposed route is described below as well as on the attached topographic maps.

In Richland County, Montana, the pipeline crosses  
Township 22N, Range 59E, Sections 16, 17, 21, 22, 27, 34, 35;  
Township 21N, Range 59E, Section 1; and  
Township 21N, Range 60E, Sections 5 and 6.

In McKenzie County, North Dakota, the pipeline crosses  
Township 148N, Range 105W, Sections 34, 35, and 36;  
Township 147N, Range 105W, Section 1;  
Township 147N, Range 104W, Sections 6, 7, 8, 9, 10, 11, 12;  
Township 147N, Range 103W, Sections 5, 6, 7;  
Township 148N, Range 103W, Sections 1, 12, 13, 14, 17, 23;  
Township 148N, Range 102W, Sections 1, 2, 3, 4, 5, 6;  
Township 149N, Range 101W, Sections 23, 24, 26, 27, 28, 32, 33;  
Township 149N, Range 100W, Sections 1, 8, 9, 10, 11, 12, 17, 17, 19;  
Township 149N, Range 99W, Sections 4, 5, 6;  
Township 150N, Range 99W, Sections 1, 2, 11, 14, 15, 16, 21, 28, 33;  
Township 150N, Range 98W, Section 6; and  
Township 151N, Range 98W, Sections 31, 32, 33, 34, 35.

Pipeline construction activities will typically occupy a 100-foot right of way. Following construction, the pipeline will occupy a 50-foot permanent right of way. To minimize impacts, approximately 37% of the proposed route will be collocated with existing utility corridors.

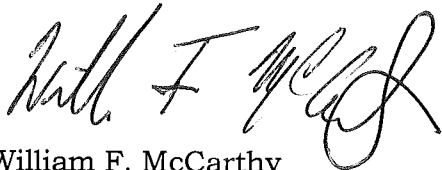
The purpose of this correspondence is to request confirmation of the presence or absence of North Dakota Game and Fish Department PLOTS land within the study corridor (see attached).

ONEOK, Bear Paw Energy  
Garden Creek NGL Pipeline  
December 30, 2010



E3 Environmental, LLC (E3) has been retained by BPE to provide environmental consulting support for this project. Should you have questions or require additional information, please contact me at 651-319-7456 or [wmccarthy@go2e3.com](mailto:wmccarthy@go2e3.com).

Sincerely,

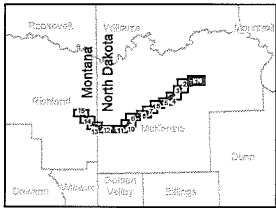
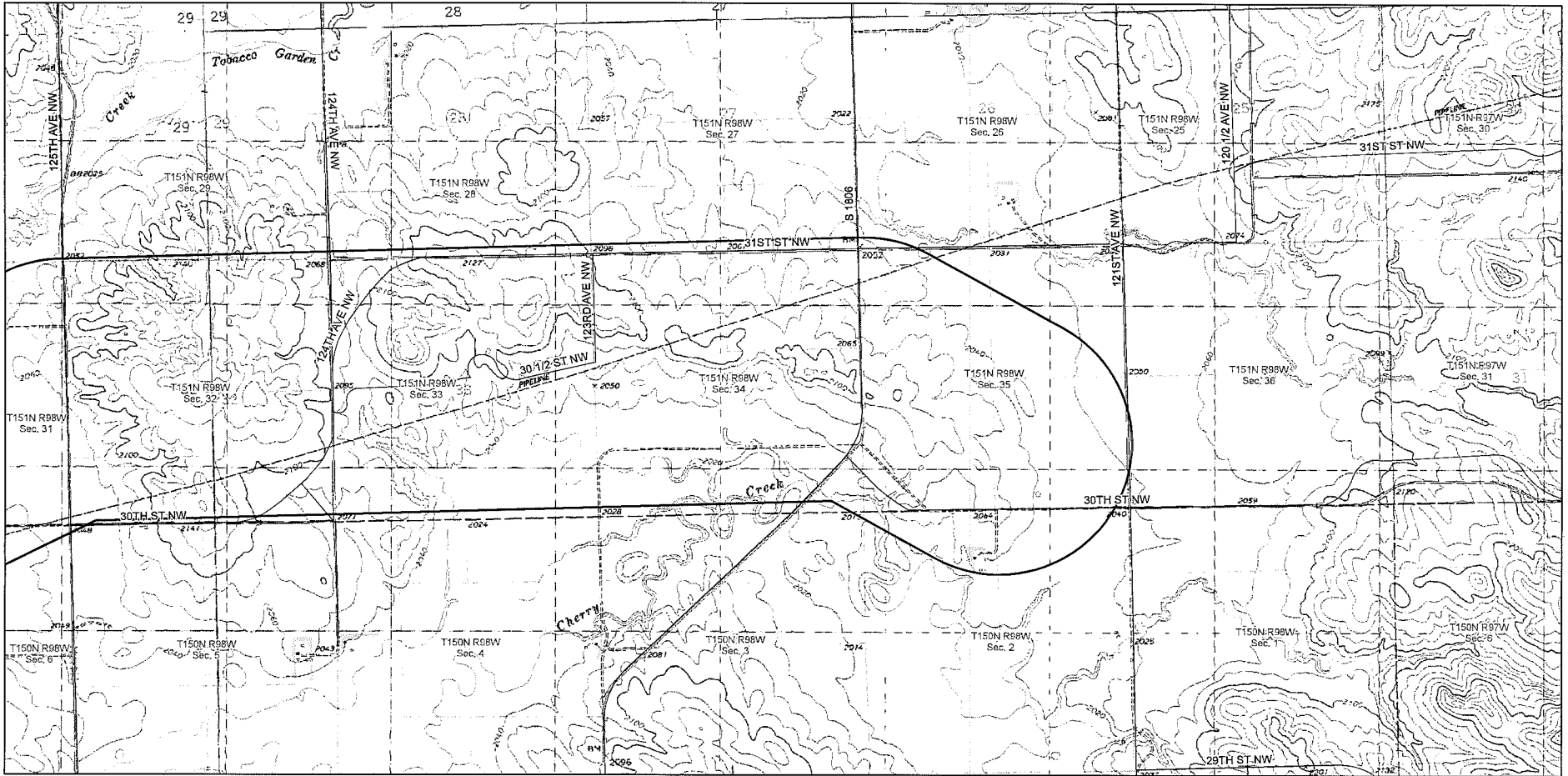


William F. McCarthy  
Project Manager  
E3 Environmental, LLC

Enclosures:

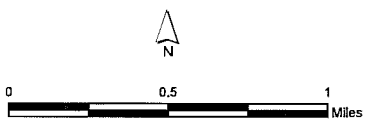
Project map - USGS topographic

cc: Barry Selke, ONEOK  
Russ Clark, ONEOK  
Project files



Corridor  
 Roadway

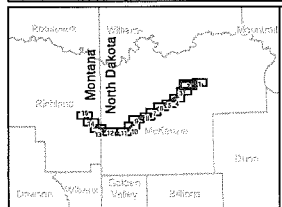
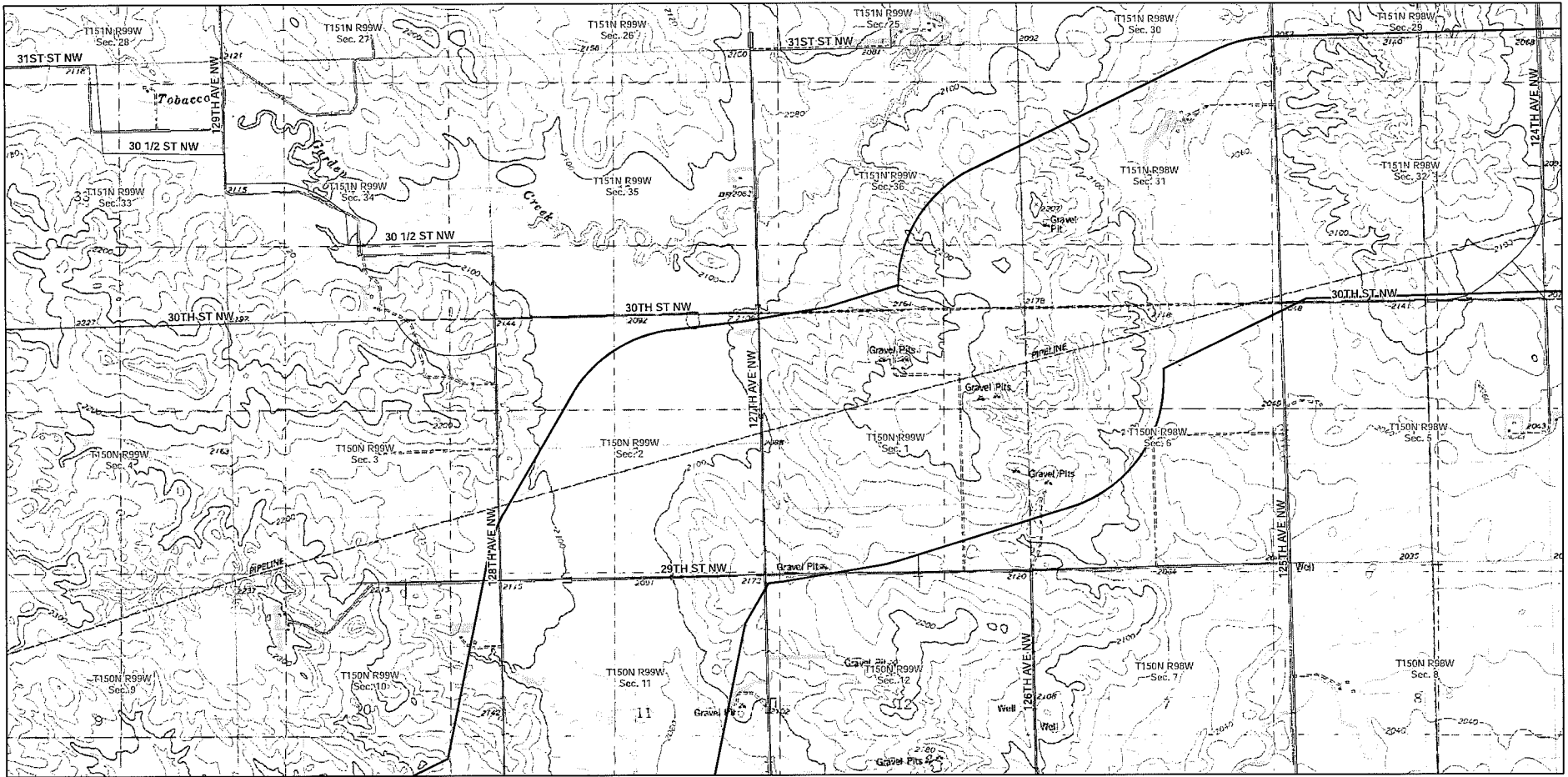
Source: USGS 7.5' series topographic maps



**Garden Creek NGL  
Proposed Pipeline**

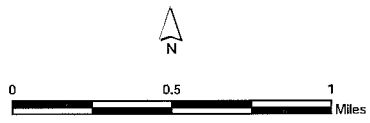
**Topographic Map**

**Map 01 of 15**

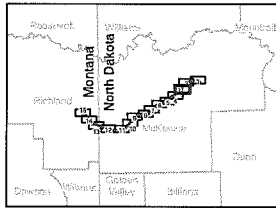
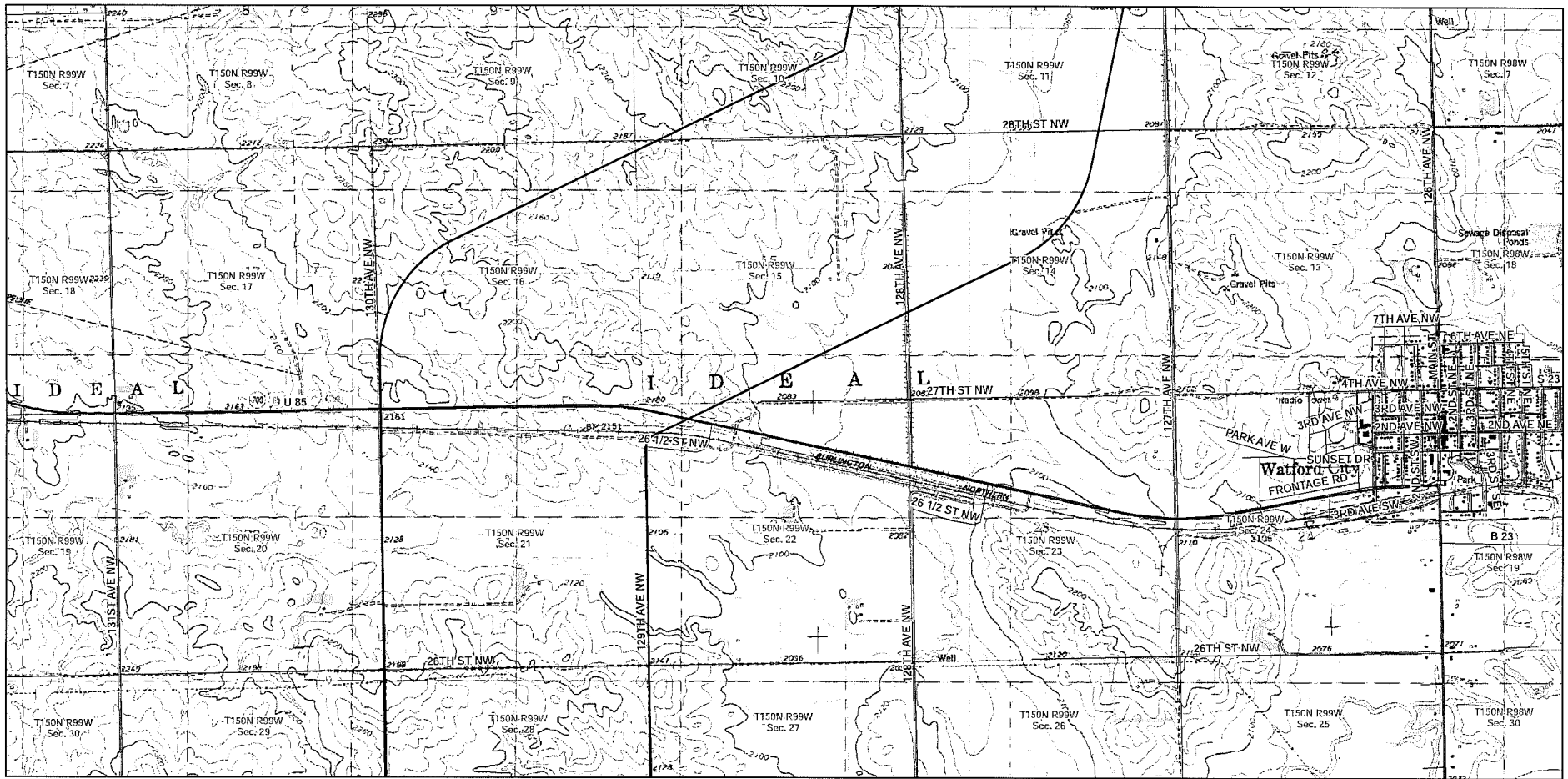


Corridor  
 Roadway

Source: USGS 7.5' series topographic maps

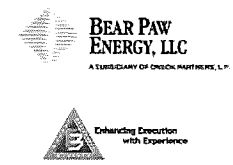
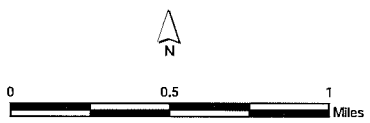


**Garden Creek NGL  
 Proposed Pipeline**  
  
**Topographic Map**  
  
 Map 02 of 15



Corridor  
 Roadway

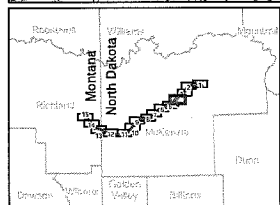
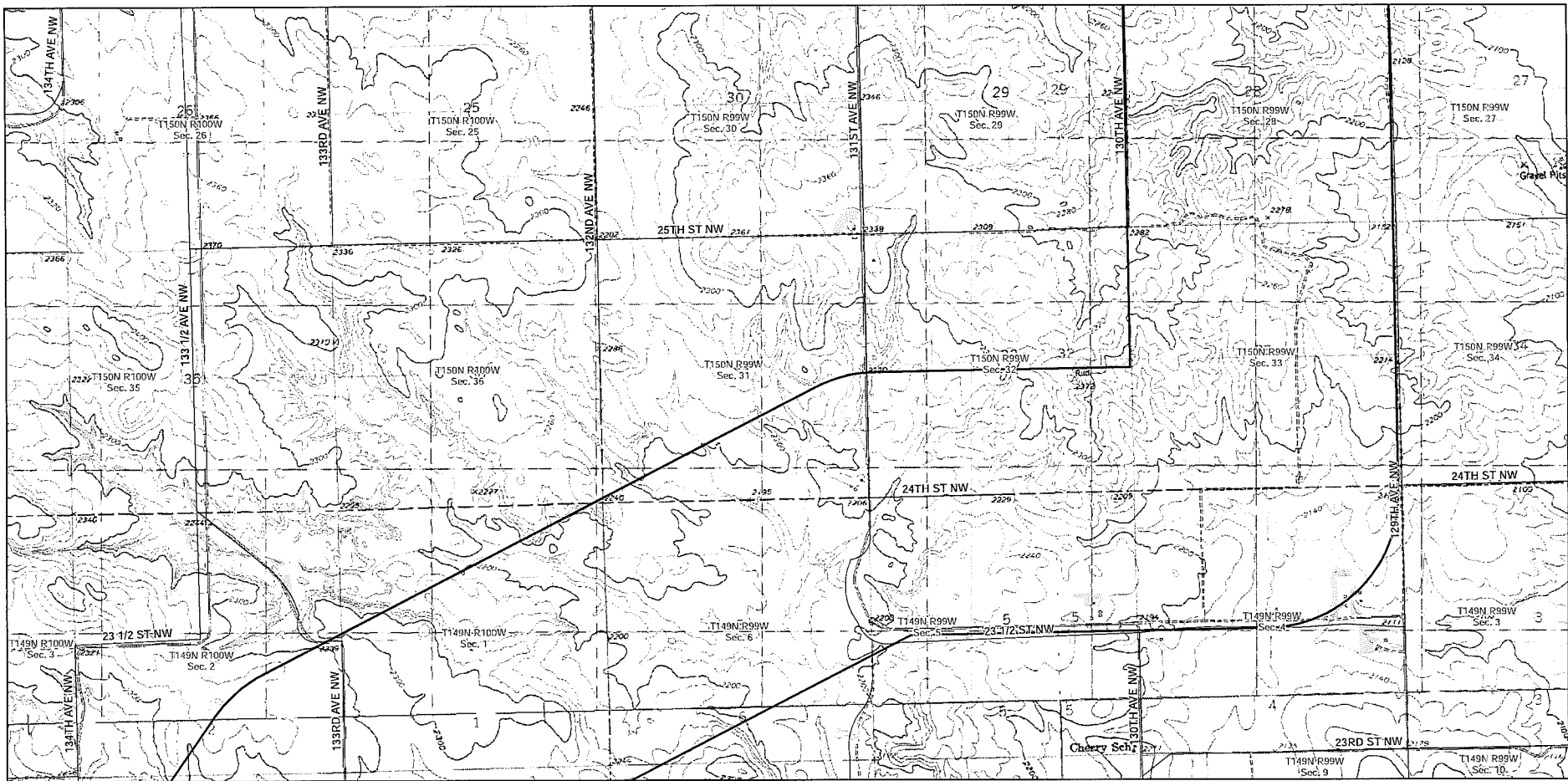
Source: USGS 7.5' series topographic maps



Garden Creek NGL  
Proposed Pipeline

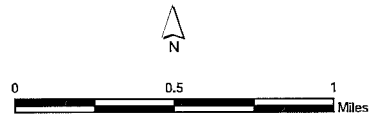
Topographic Map

Map 03 of 15

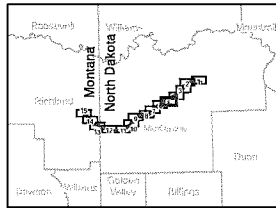
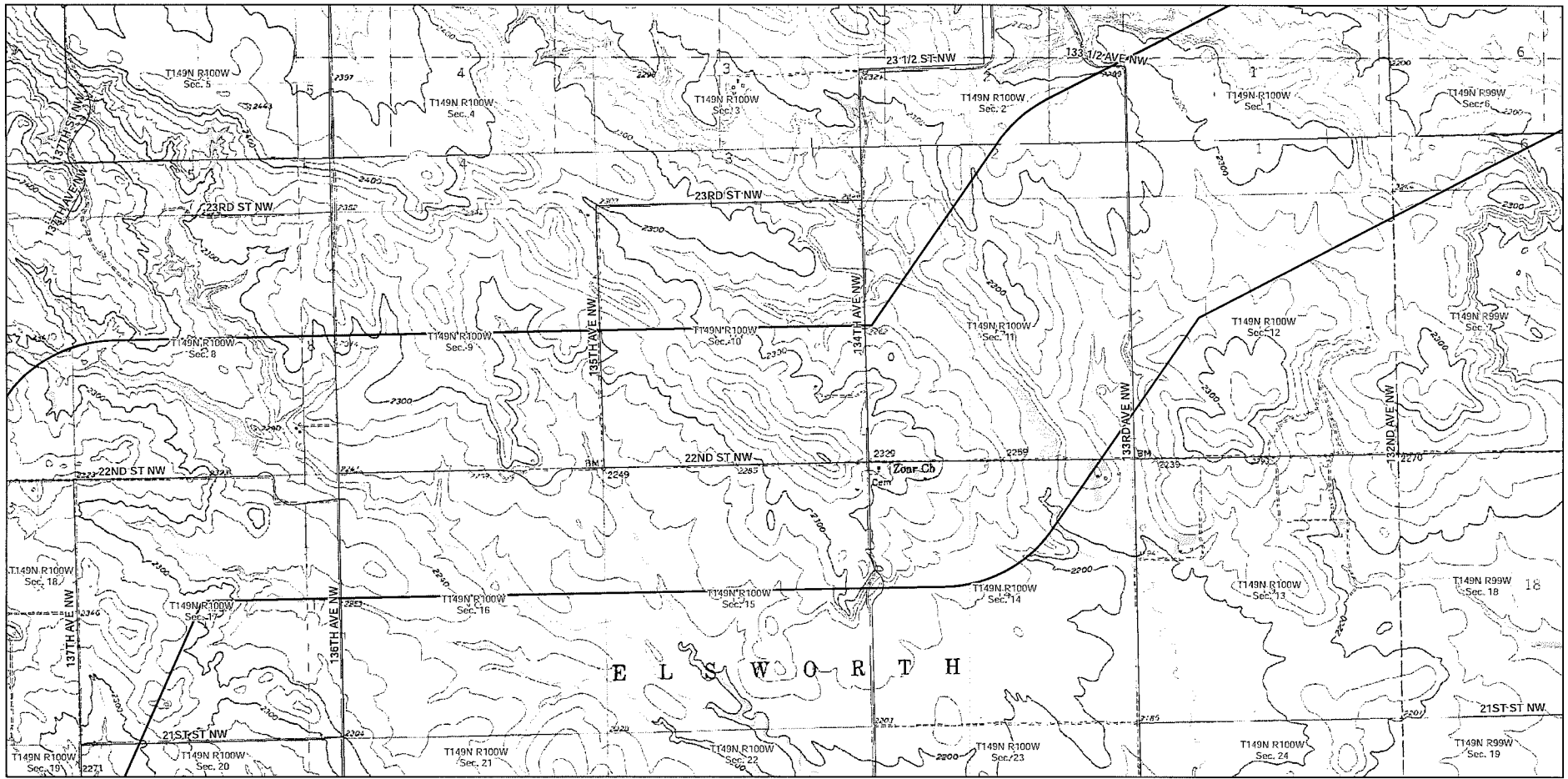


Corridor  
 Roadway

Source: USGS 7.5' series topographic maps

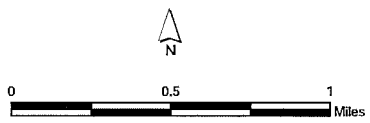


**Garden Creek NGL  
 Proposed Pipeline**  
  
**Topographic Map**  
  
 Map 04 of 15



Corridor  
 Roadway

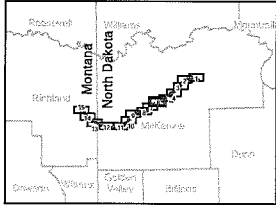
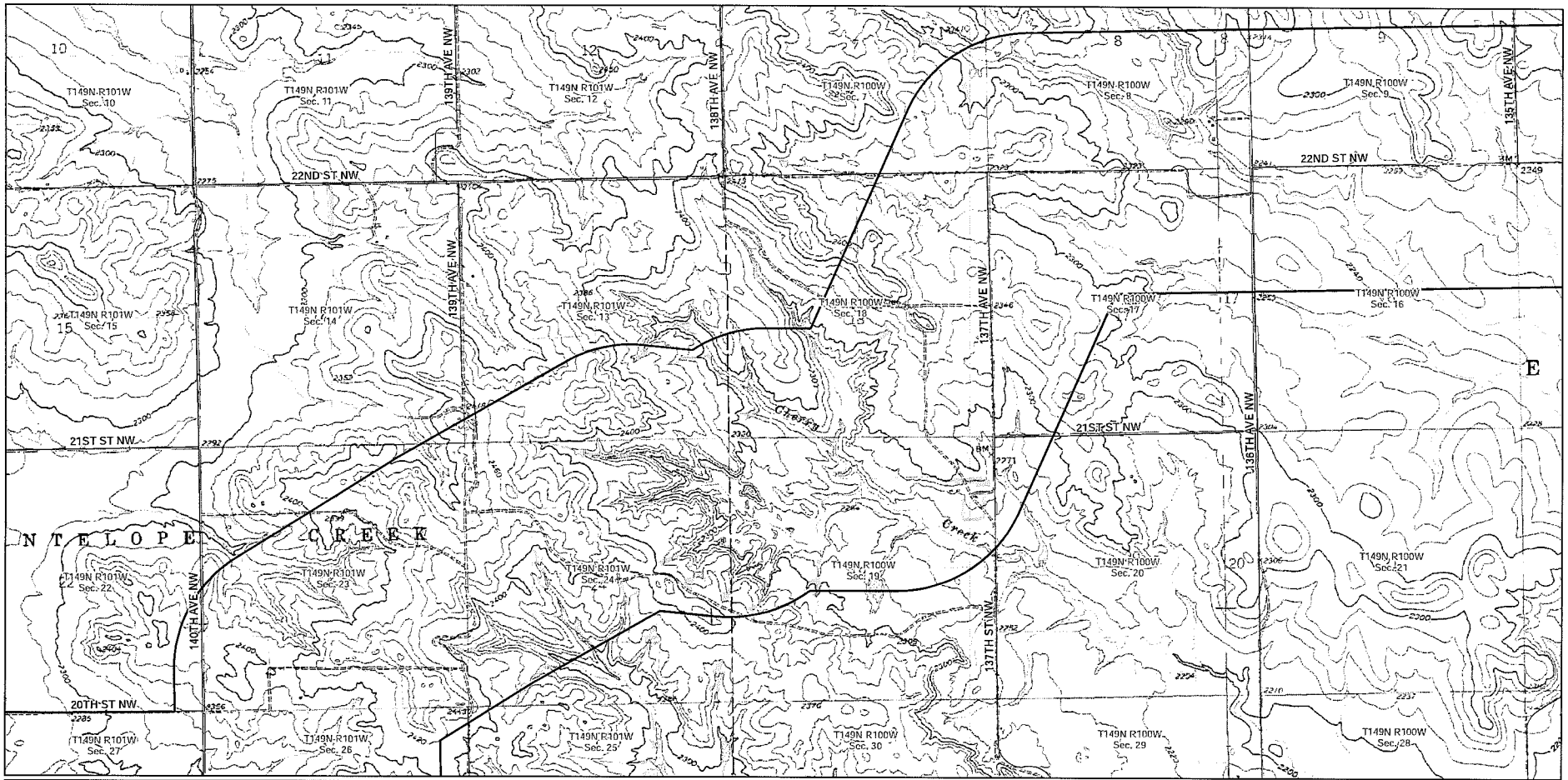
Source: USGS 7.5' series topographic maps



**Garden Creek NGL  
Proposed Pipeline**

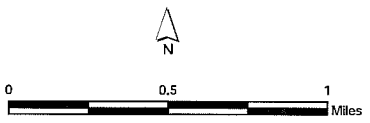
**Topographic Map**

Map 05 of 15

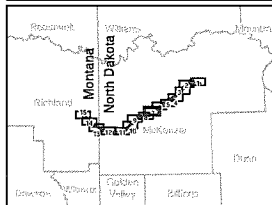
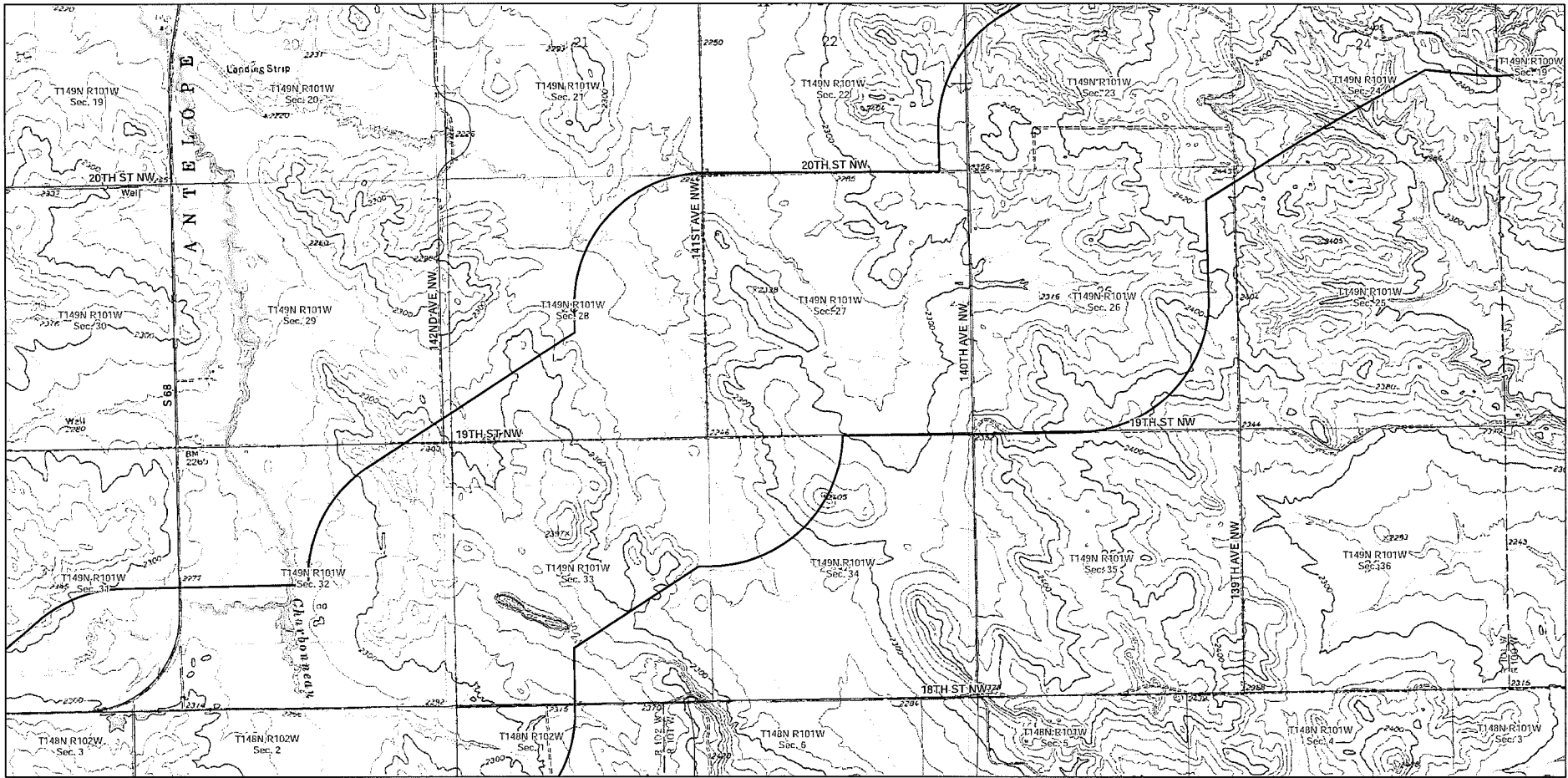


Corridor  
 Roadway

Source: USGS 7.5' series topographic maps

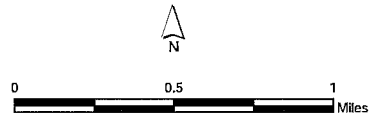


**Garden Creek NGL  
 Proposed Pipeline**  
  
**Topographic Map**  
  
**Map 06 of 15**



Corridor  
 Roadway

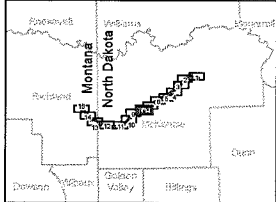
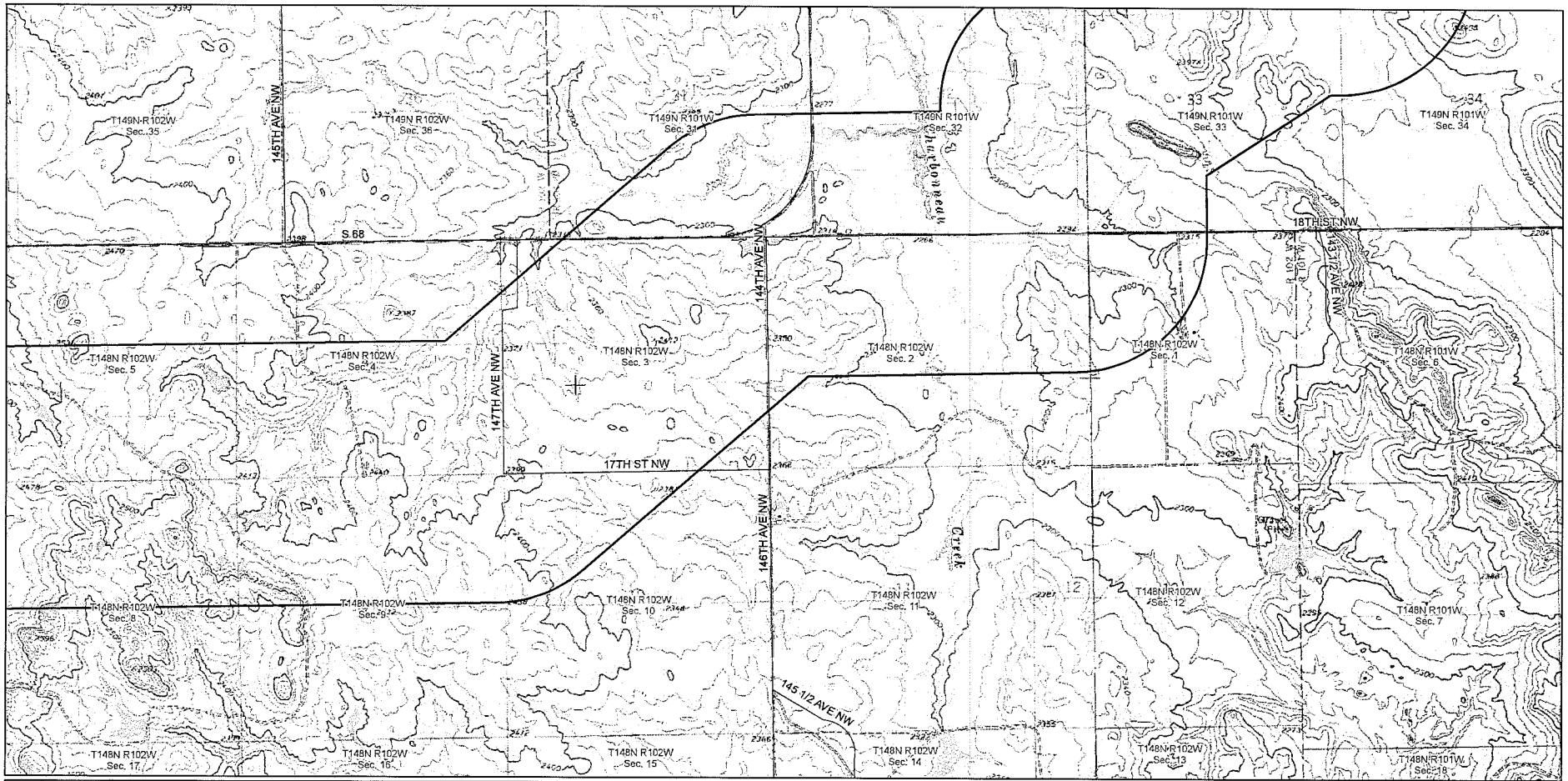
Source: USGS 7.5' series topographic maps



Garden Creek NGL  
Proposed Pipeline

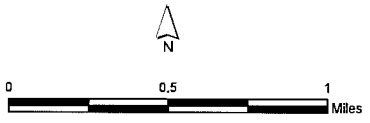
Topographic Map

Map 07 of 15

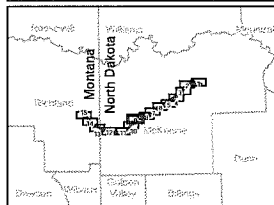
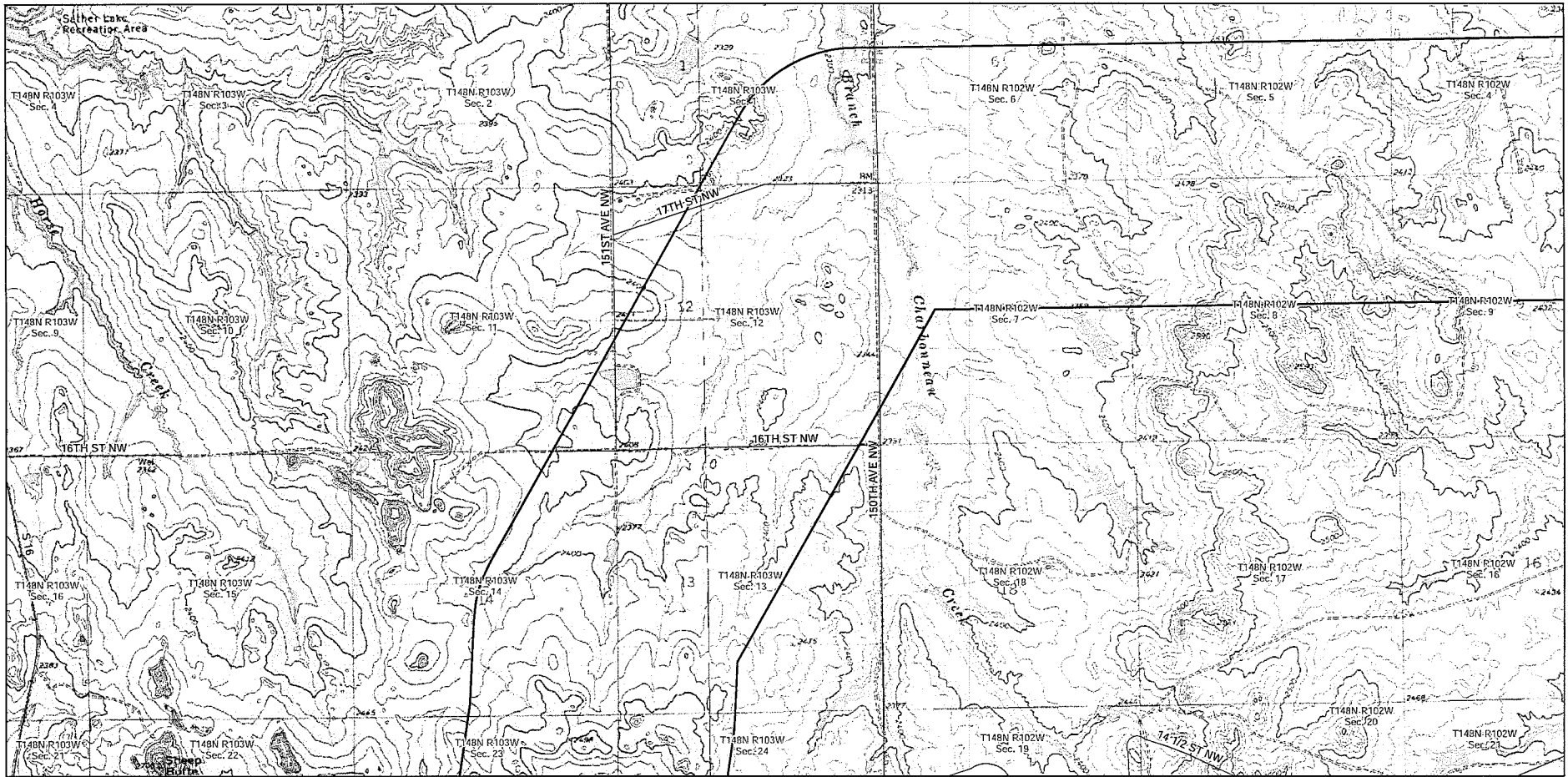


Corridor  
 Roadway

Source: USGS 7.5' series topographic maps

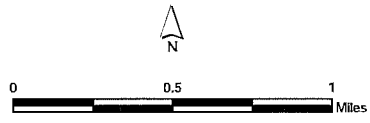


**Garden Creek NGL  
 Proposed Pipeline**  
  
**Topographic Map**  
  
**Map 08 of 15**



Corridor  
 Roadway

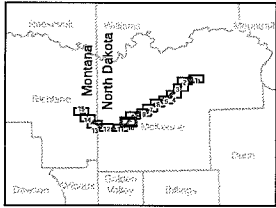
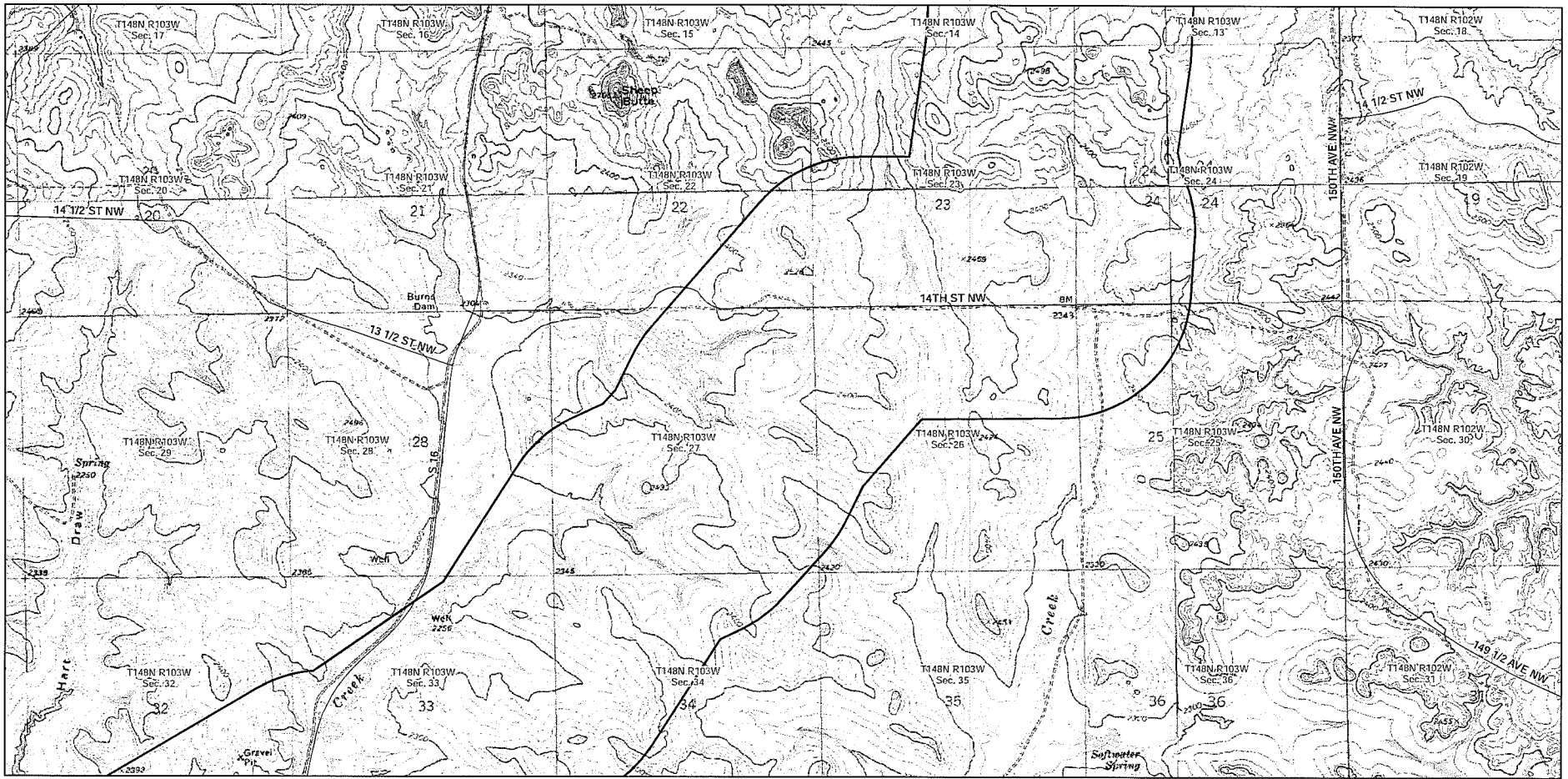
Source: USGS 7.5' series topographic maps



**Garden Creek NGL  
Proposed Pipeline**

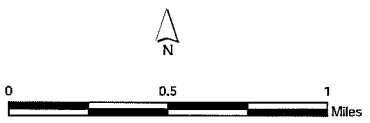
Topographic Map

Map 09 of 15



Corridor  
 Roadway

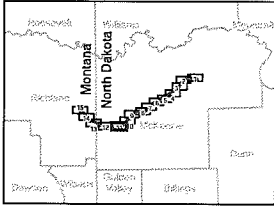
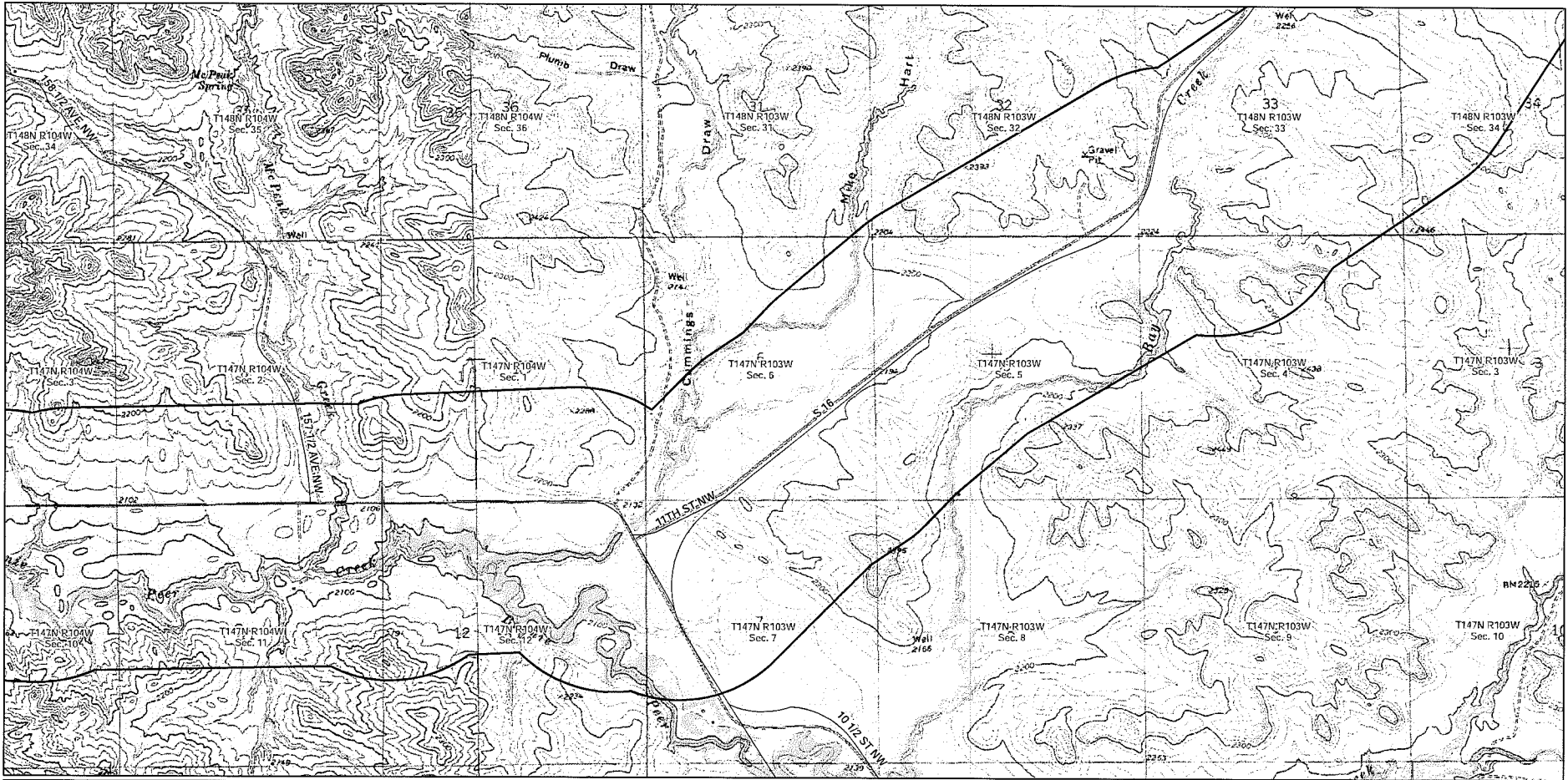
Source: USGS 7.5' series topographic maps



Garden Creek NGL  
Proposed Pipeline

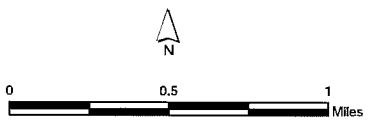
Topographic Map

Map 10 of 15



Corridor  
 Roadway

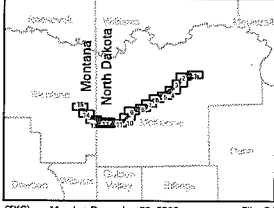
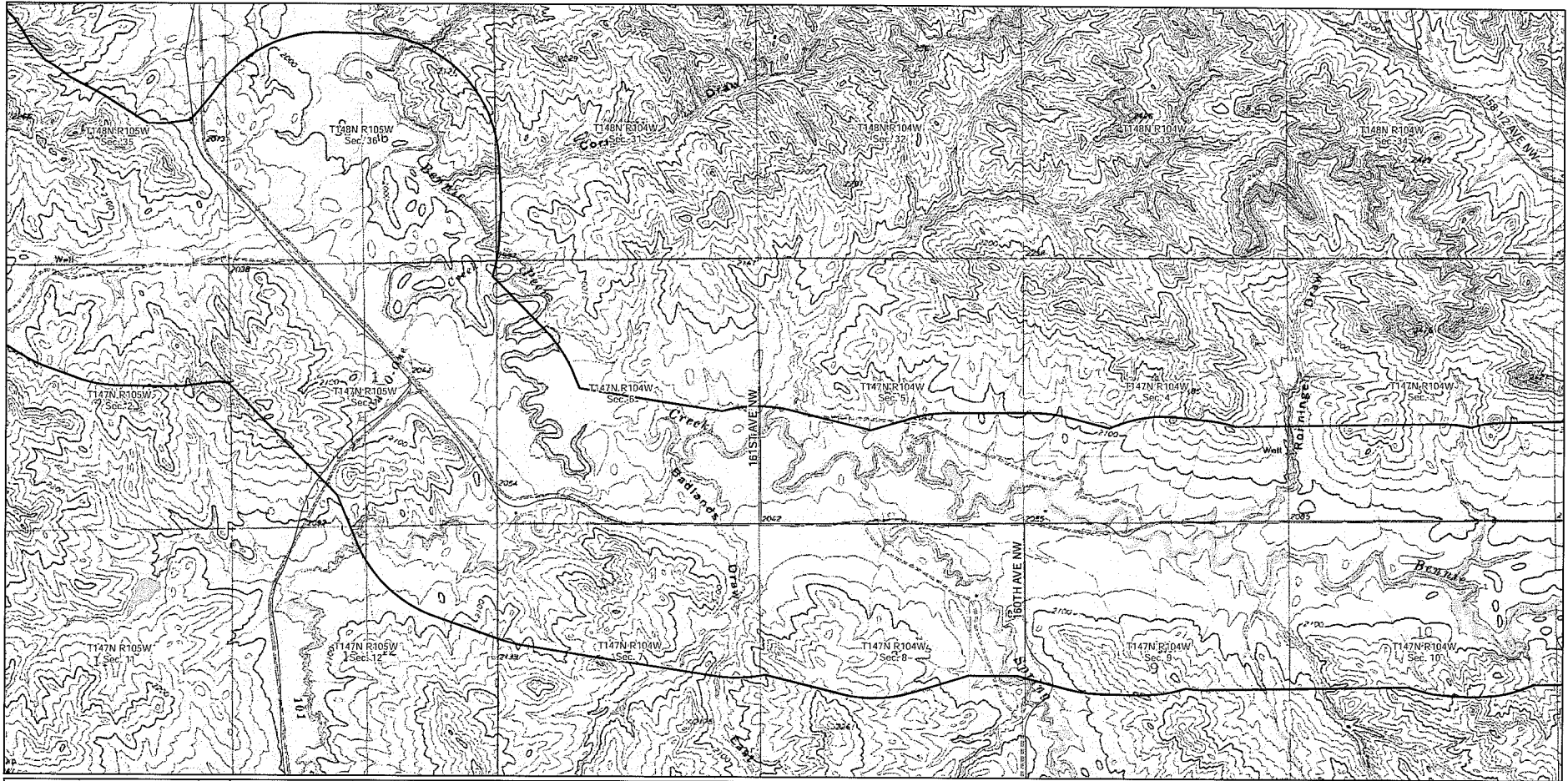
Source: USGS 7.5' series topographic maps





Garden Creek NGL  
Proposed Pipeline

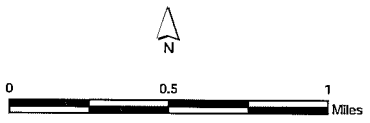
Topographic Map

Map 11 of 15



 Corridor  
 Roadway

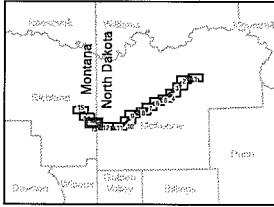
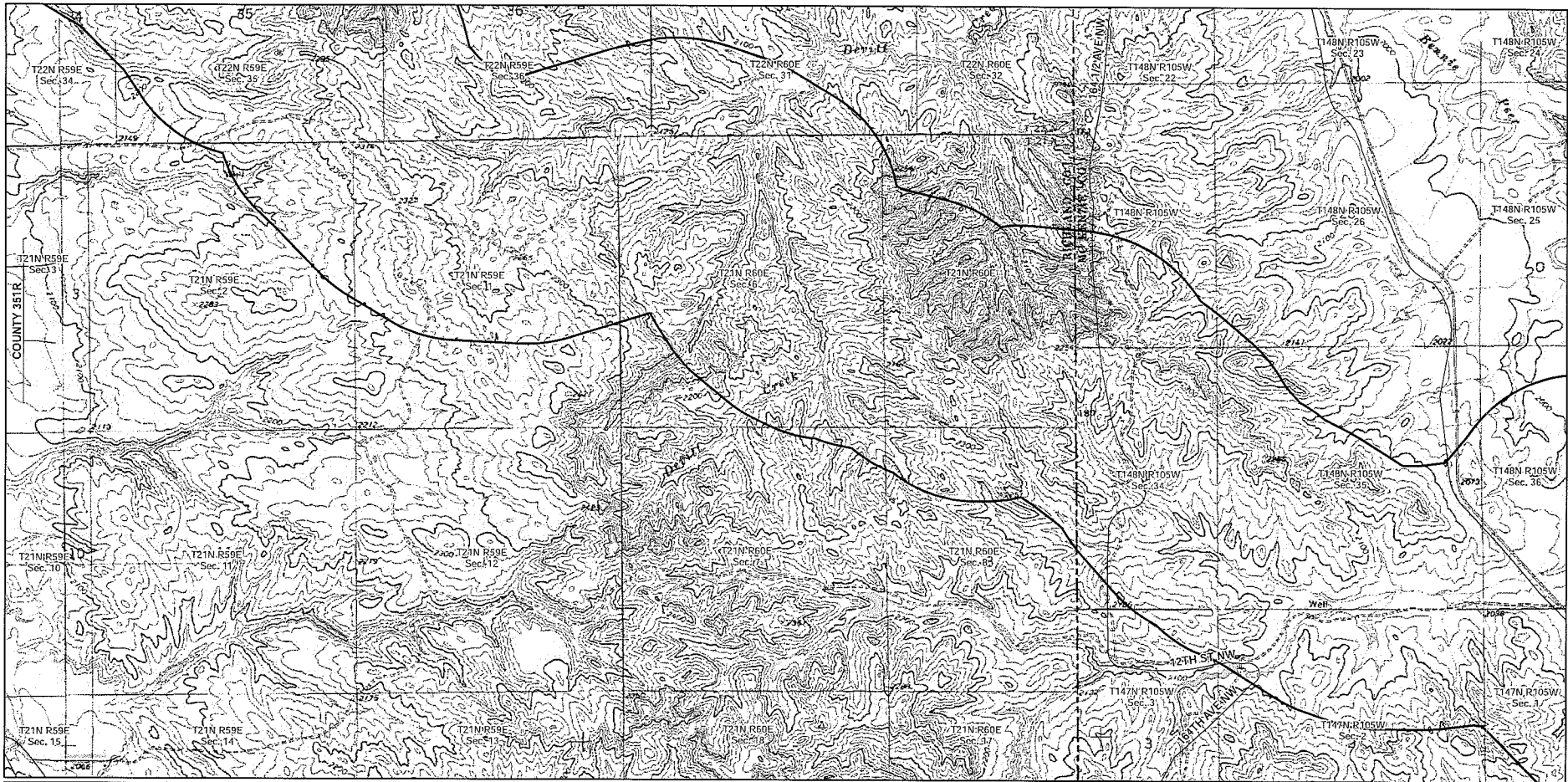
Source: USGS 7.5' series topographic maps


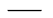


Garden Creek NGL  
Proposed Pipeline

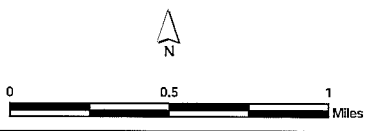
Topographic Map

Map 12 of 15



-  Corridor
-  Roadway

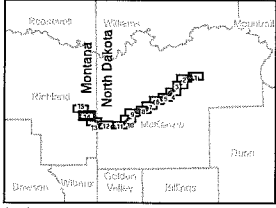
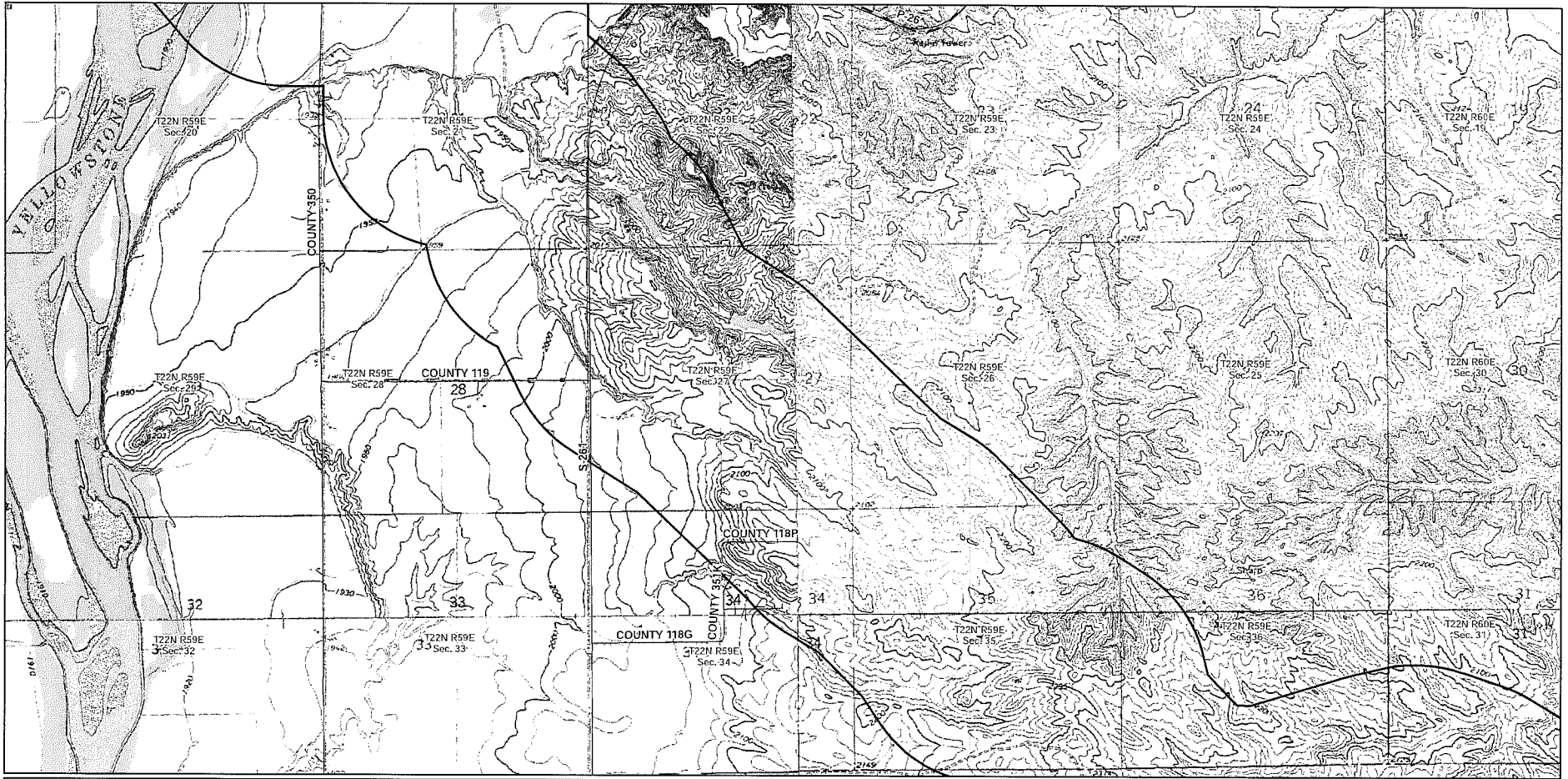
Source: USGS 7.5' series topographic maps



Garden Creek NGL  
Proposed Pipeline

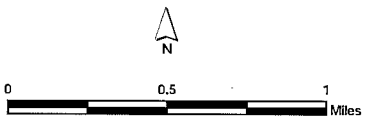
Topographic Map

Map 13 of 15



Corridor  
 Roadway

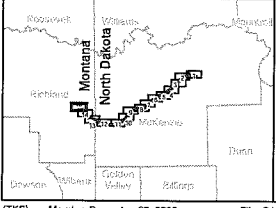
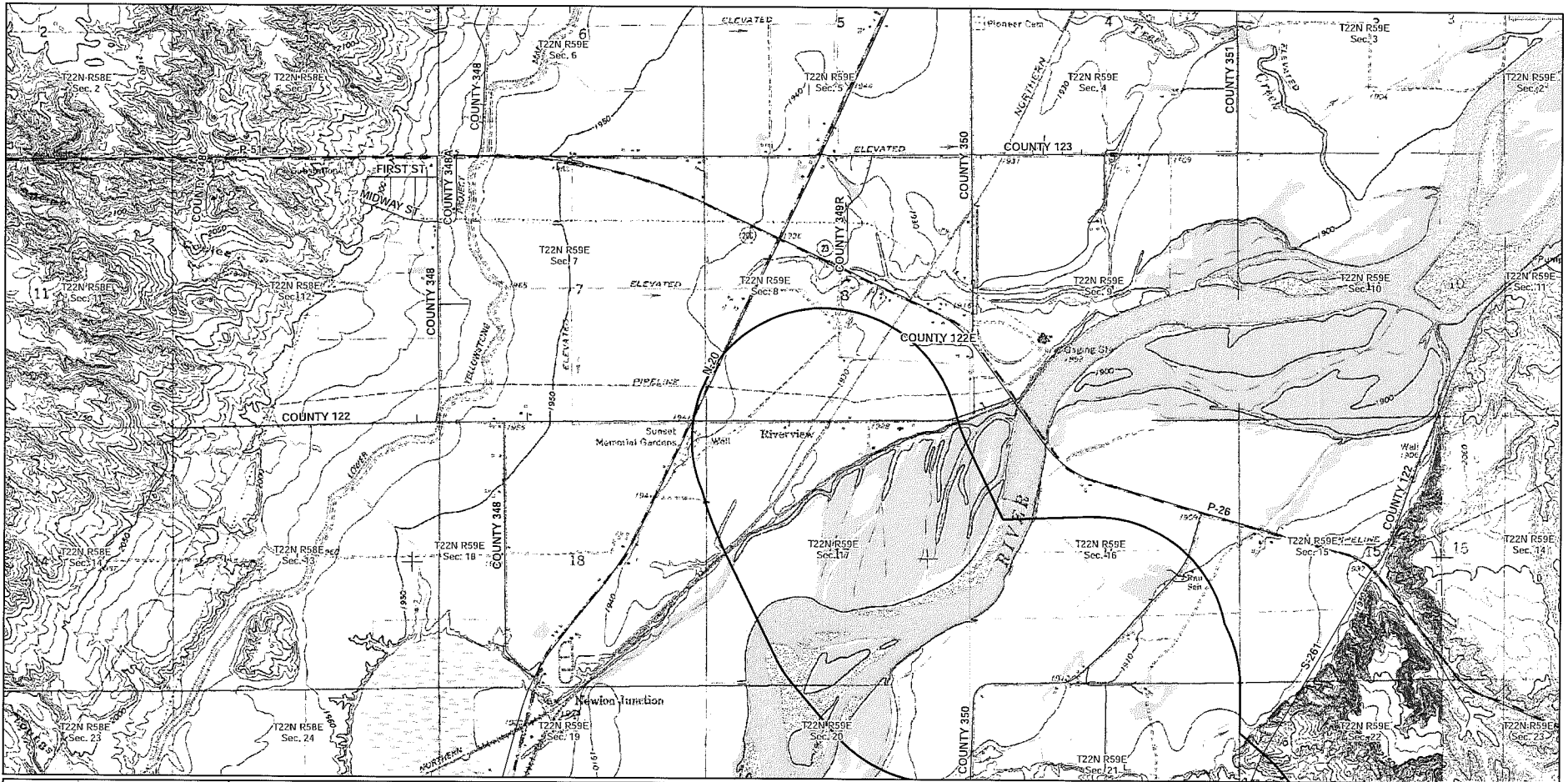
Source: USGS 7.5' series topographic maps



Garden Creek NGL  
Proposed Pipeline

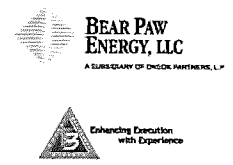
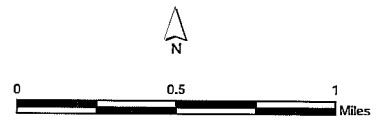
Topographic Map

Map 14 of 15



Corridor  
 Roadway

Source: USGS 7.5' series topographic maps



**Garden Creek NGL  
 Proposed Pipeline**  
  
**Topographic Map**  
  
 Map 15 of 15