









EXHIBIT 3

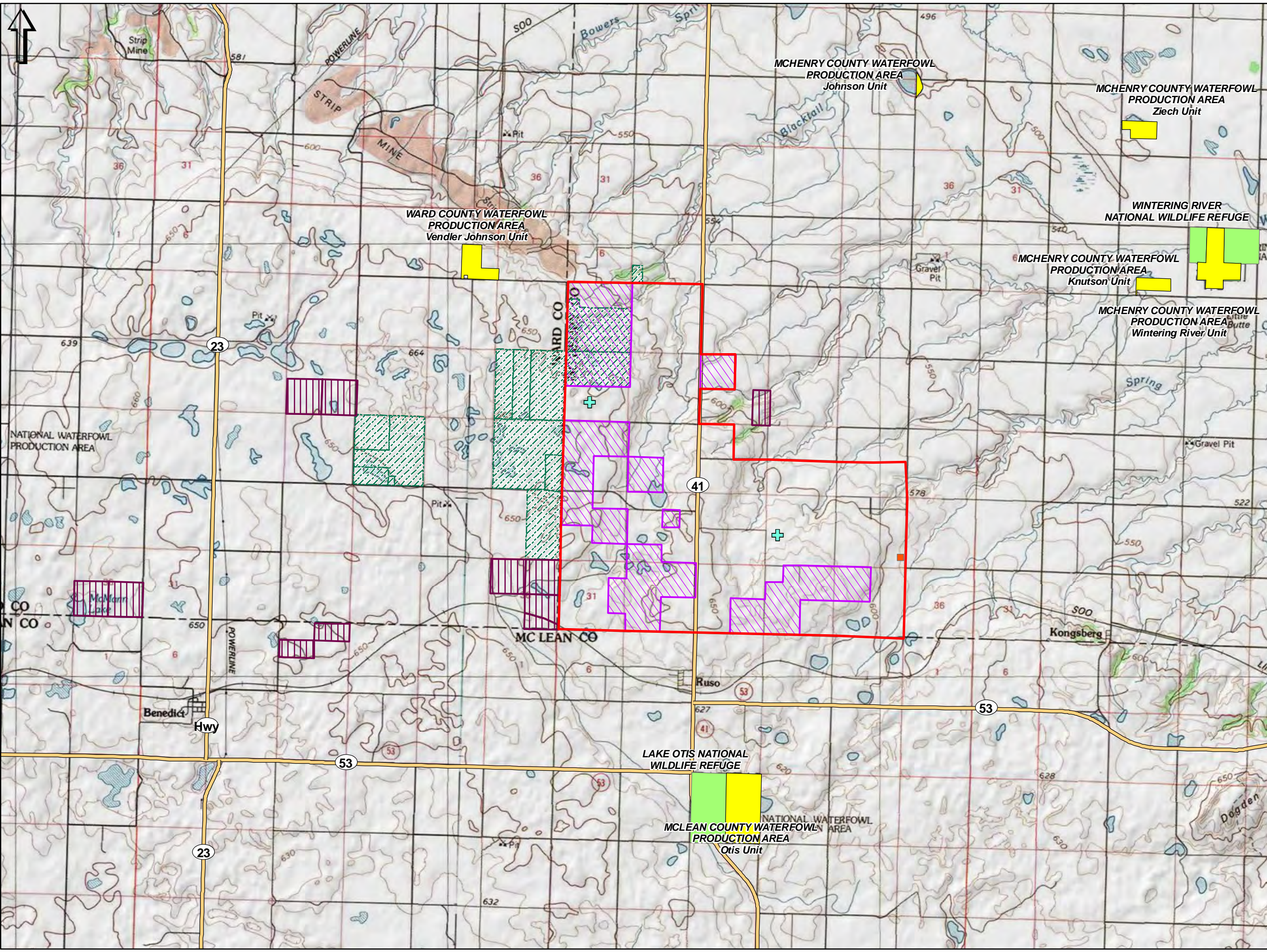
U.S. Fish and Wildlife Service Easements

This page intentionally left blank.

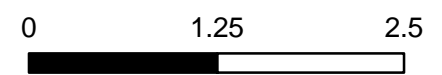
UPDATE (Fig.7) - Public Lands and Easements

New Frontier Wind Energy Project McHenry County, North Dakota

-  Project Area Fully Leased
-  Existing Met Towers
-  Proposed Substation
-  State Owned Land
-  National Wildlife Refuge
-  Waterfowl Production Area
-  USFWS Wetland Easement
-  USFWS Grassland Easement



elementpower



Miles
 Source: ESRI (2011), NGS USA Topo (2011) / USGS 24k quad, ND State Land Dept. (2011), USFWS Realty (2010).

