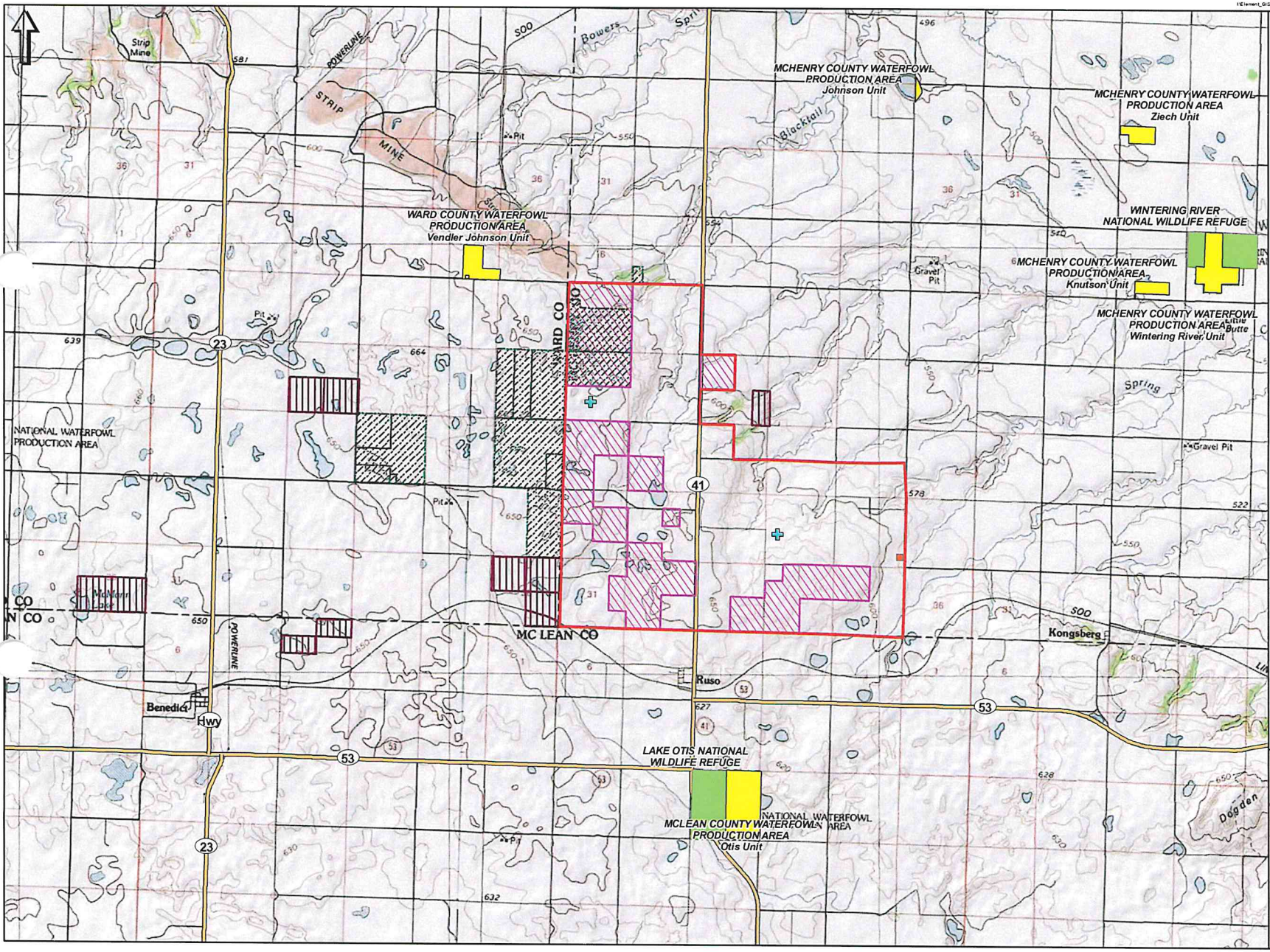


EXHIBIT 3

U.S. Fish and Wildlife Service Easements



UPDATE (Fig.7) - Public Lands and Easements

New Frontier Wind Energy Project McHenry County, North Dakota

- Project Area Fully Leased
- + Existing Met Towers
- Proposed Substation
- State Owned Land
- National Wildlife Refuge
- Waterfowl Production Area
- USFWS Wetland Easement
- USFWS Grassland Easement



elementpower

0 1.25 2.5

Miles
 Source: ESRI (2011), NGS USA Topo (2011) / USGS 24k quad, ND State Land Dept. (2011), USFWS Realty (2010).

