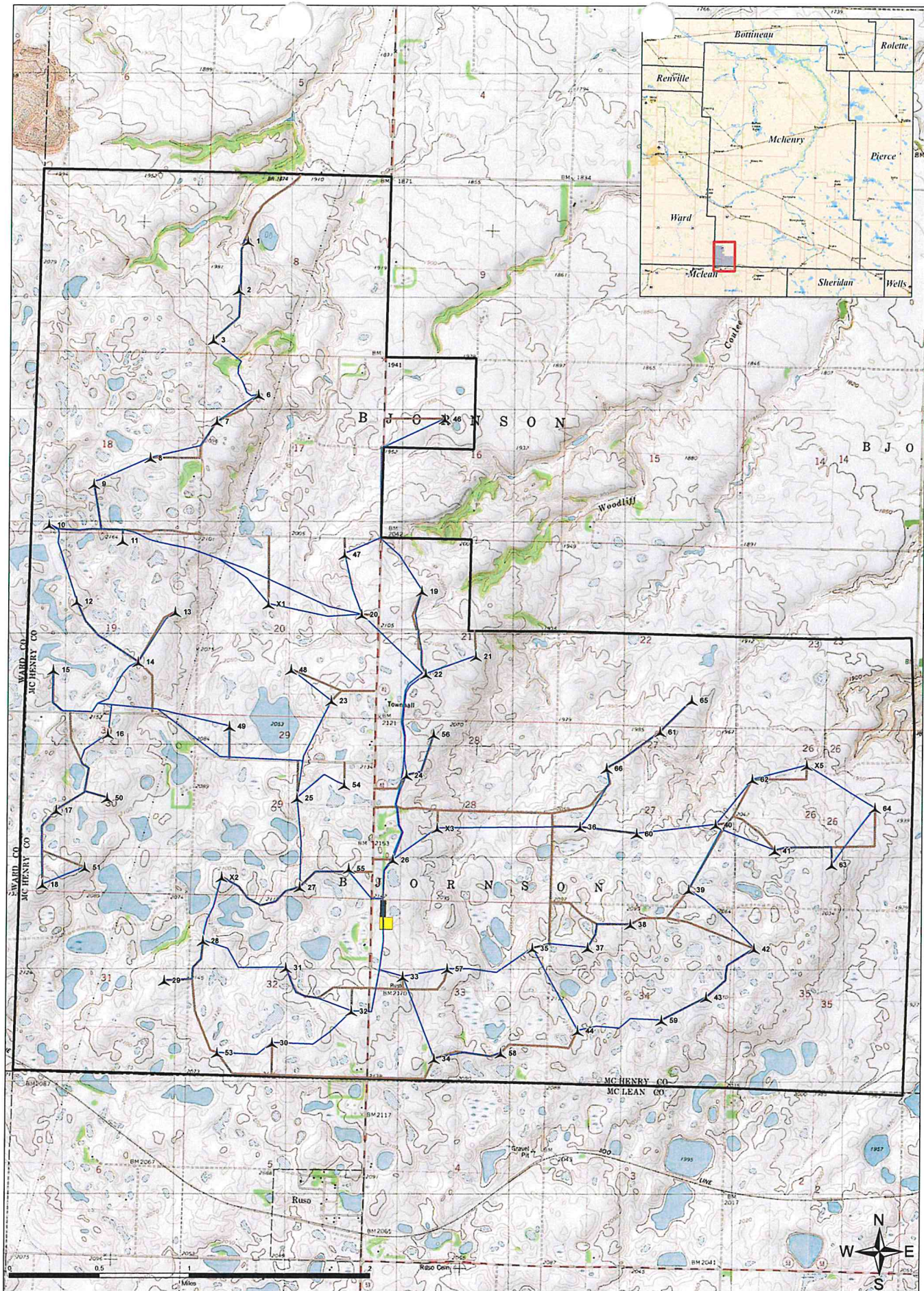








# EXHIBIT 4

## Final Project Layout



Source of Backdrop: ESRI



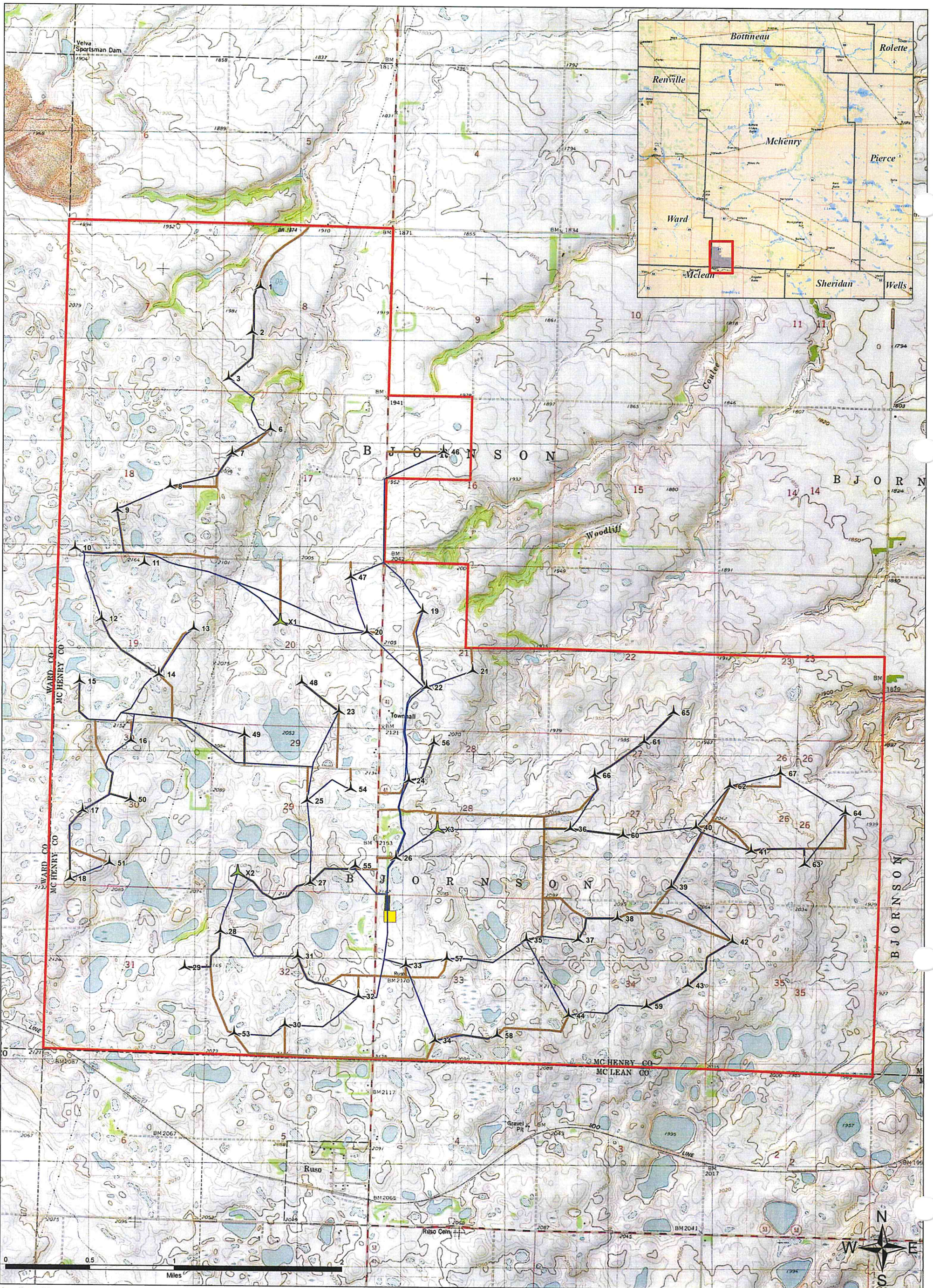
-  Turbine Location
-  Underground Electrical Circuit
-  Access Road
-  O & M Building
-  Substation Area
-  Project Area

## New Frontier Wind

Turbine Locations, Access Roads, Underground Electrical Circuits.



December 2, 2011

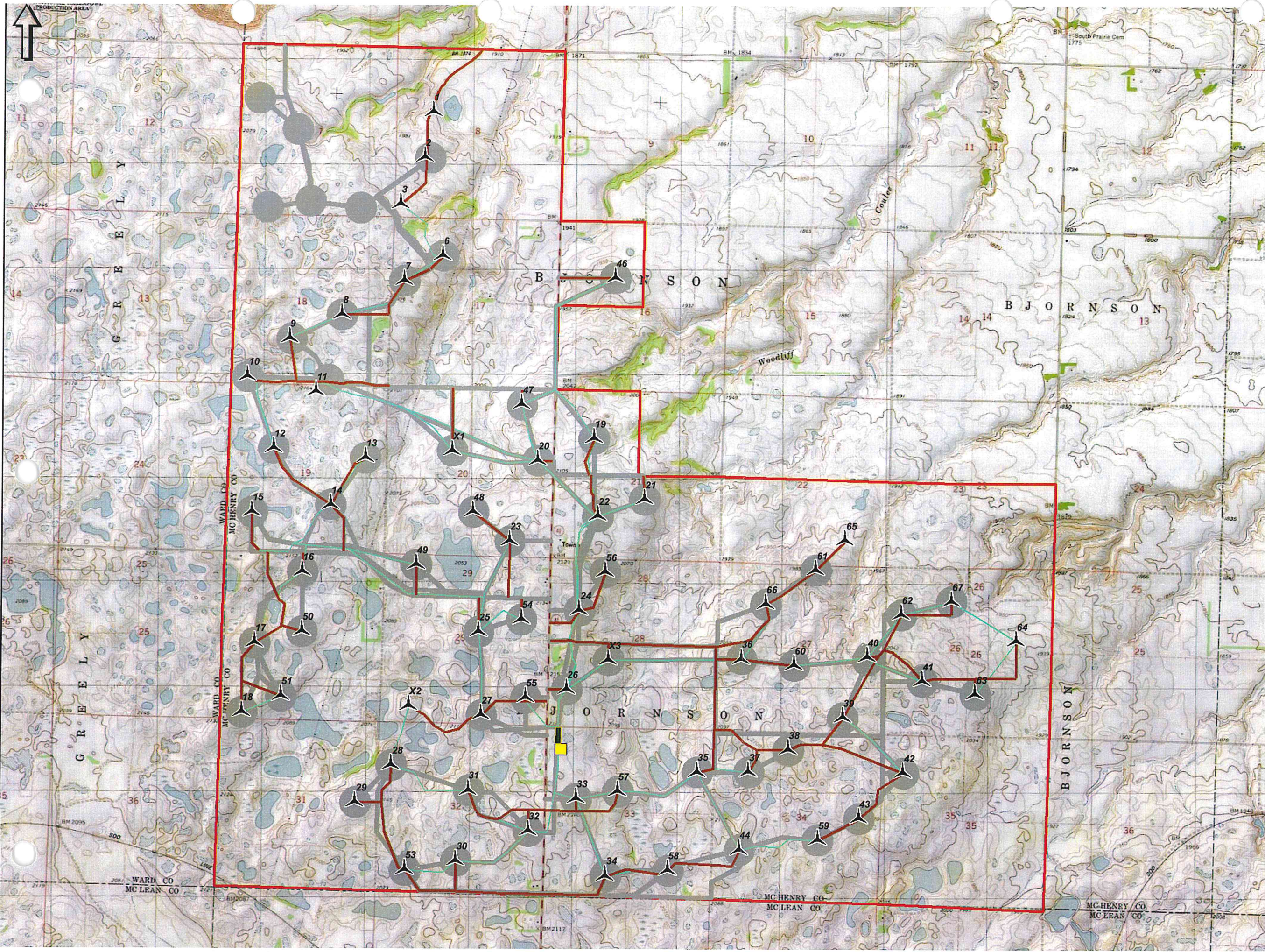


- Turbine Location
- Alternate Turbine Location
- Underground Electrical Circuit
- Access Road
- O & M Building
- Substation Area
- Project Area

## New Frontier Wind








Turbine Locations, Access Roads, Underground Electrical Circuits (Revised).

December 12, 2011



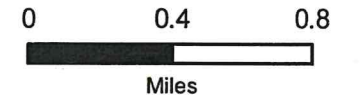
**Areas Surveyed for Cultural Resources Vs. Revised Project Infrastructure Map**

New Frontier Wind Energy Project  
McHenry County, North Dakota

-  Project Area
-  Current Turbine Locations
-  Current Access Roads
-  Current Circuits
-  Substation Area
-  O & M Building
-  Class III Surveyed Area



elementpower



Source: ESRI (2011), NGS USA Topo (2011) / USGS 24k quad, KLJ (2011).

