



November 1, 2021

Steve Kahl
North Dakota Public Service Commission
600 East Boulevard Avenue, Dept. 408
Bismarck, ND 58505-0480

**RE: Reclamation Inspection
New Frontier Wind Energy Project PU-11-069**

Dear Mr. Kahl:

Carlson McCain, Inc. (CMI) conducted a reclamation inspection at the New Frontier Wind Energy Project in McHenry County (Case No. PU-11-069) on September 28, 2021, on behalf of the North Dakota Public Service Commission (PSC). CMI Inspector, Chad Tucker, met Travis McDermott (Site Manager) and Doug Johnston (South McHenry Soil Conservation Dept.) on site. Reclamation activities at the facility were discussed and a visual inspection of the facility was conducted. The attached Figure depicts the location(s) of photographs taken during the inspection.

Initial reclamation of the facility was completed in 2020 with some areas of grass reseeded in 2021. Re-seeding was performed due to lack of vegetation growth caused by drought conditions. The initial tree plantings were done on May 10th-May25th of 2020 and replacement plantings were completed May 24th - 28th 2021. All tree and shrub rows were accounted for except for one. Mr. George Legg's (Section 34, Township (T) 151 North (N), Range (R) 80 West (W)) tree and shrub plantings did not take in 2020 due to dry conditions. The South McHenry County Soil Conservation District will replant the trees and shrubs when moisture levels improve.

Overall, reclamation has been successful and there were no other areas needing further work noted. Ongoing maintenance of access roads is anticipated and normal. Please contact me at 701-595-7007 if you have any questions or require additional information.

Respectfully submitted,

Chad Tucker
Wildlife Biologist

cc: Jennifer Schroeder, Capital Power

212 PU-11-69 Filed 11/01/2021 Pages: 7
Reclamation Inspection Report
Carlson McCain, Inc.
Chad Tucker, Wildlife Biologist



Photograph 1. View looking west along the access road to Turbine 31. Grass along the south side of the road was established.



Photograph 2. View looking north up the access road to Turbine 33. The sides of the road were planted in grass, but will be cultivated by the farmer next spring.



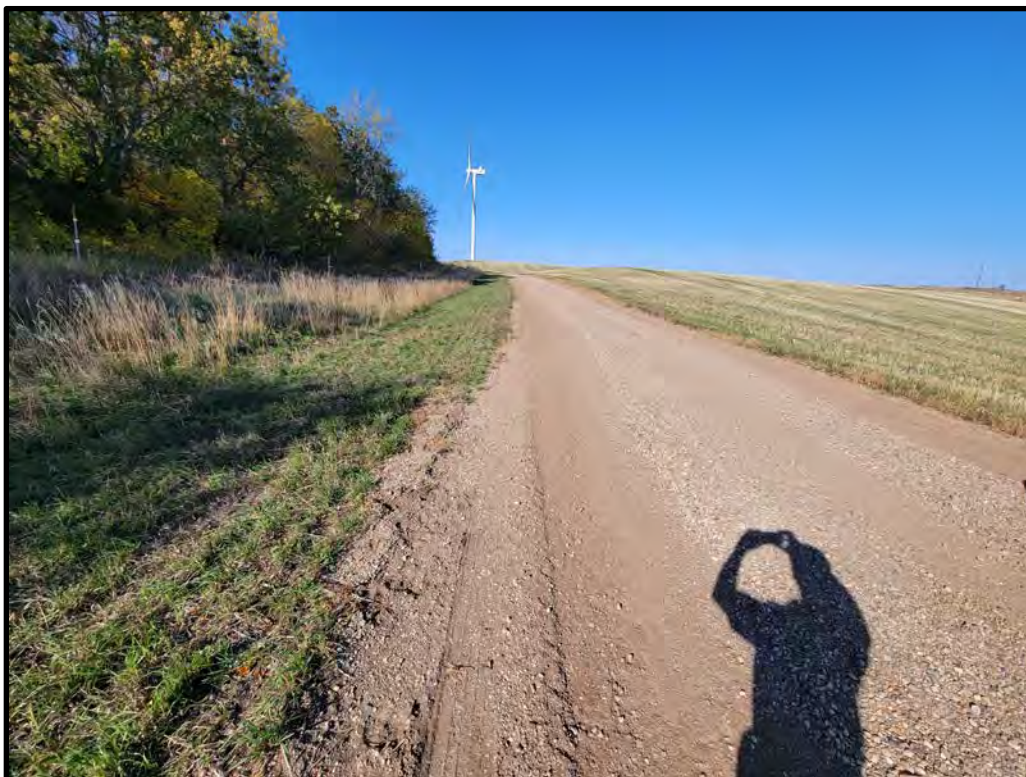
Photograph 3. View of successful grass planting on the southwest side of the junction of Hwy 41 and 32nd St. N.



Photograph 4. View looking south down access road to Turbine 54. Due to drought conditions, this area was reseeded three times and appears successful.



Photograph 5. View looking west from the access road intersection to Turbine 14. Surface water flow has caused rock to wash into the road shoulder. Crews are aware of this and working towards remediation.



Photograph 6. View looking west down the access road to Turbine 8. The left side of the road was successfully planted in grass.



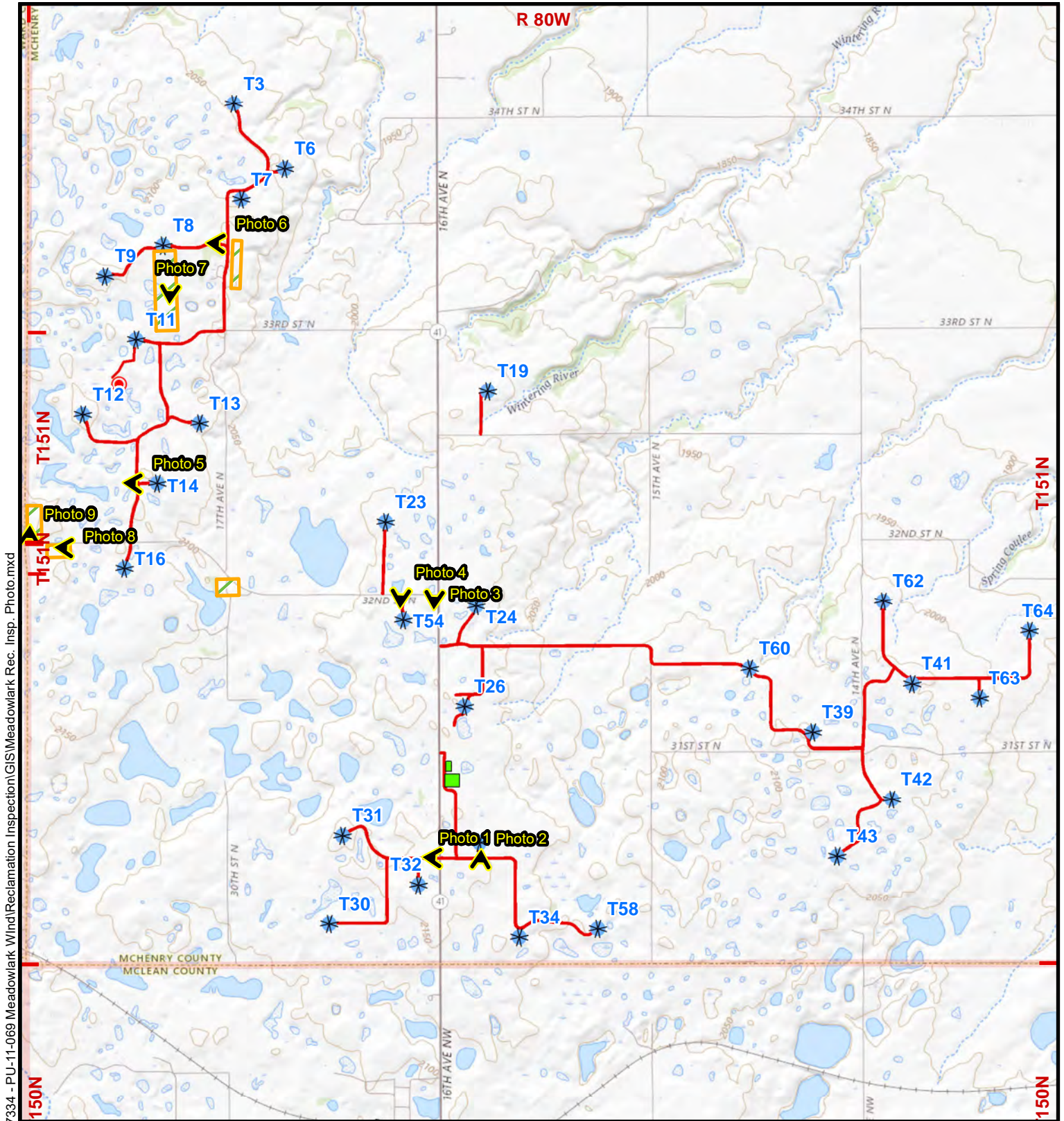
Photograph 7. View looking south down the planted tree and shrub rows on Curtis Nelson's property in Section 18, T151N, R80W.



Photograph 8. View looking west at the planted tree and shrub rows on Fred Baluski's property in Section 30, T151N, R80W.

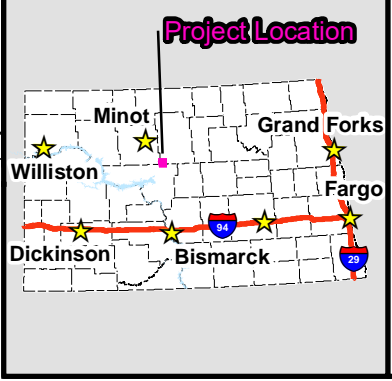


Photograph 9. View looking north at David and Wade Baluski's planted tree and shrub rows in Section 19, T151N, R80W.



R:\projects\7000-7500\7334 - PU-11-069 Meadowlark Wind\Reclamation Inspection\GIS\Meadowlark Rec. Insp. Photo.mxd

October 2021



Legend

Photo Point / Direction

- North
- South
- West
- Tree / Shrub Planting
- Facility
- Wind Turbine
- MET Tower
- Access Road

Photo Locations
Reclamation Inspection
Meadowlark Wind I LLC
ND Public Service Commission

0 2,000 4,000
 Feet

1:40,000

Basemap: USGS/TOPO

CARLSON McCAIN
 ENVIRONMENTAL • ENGINEERING • LAND SURVEYING
 3831 Lockport Street, Suite C, Bismarck, North Dakota 58503
 www.carlsonmccain.com