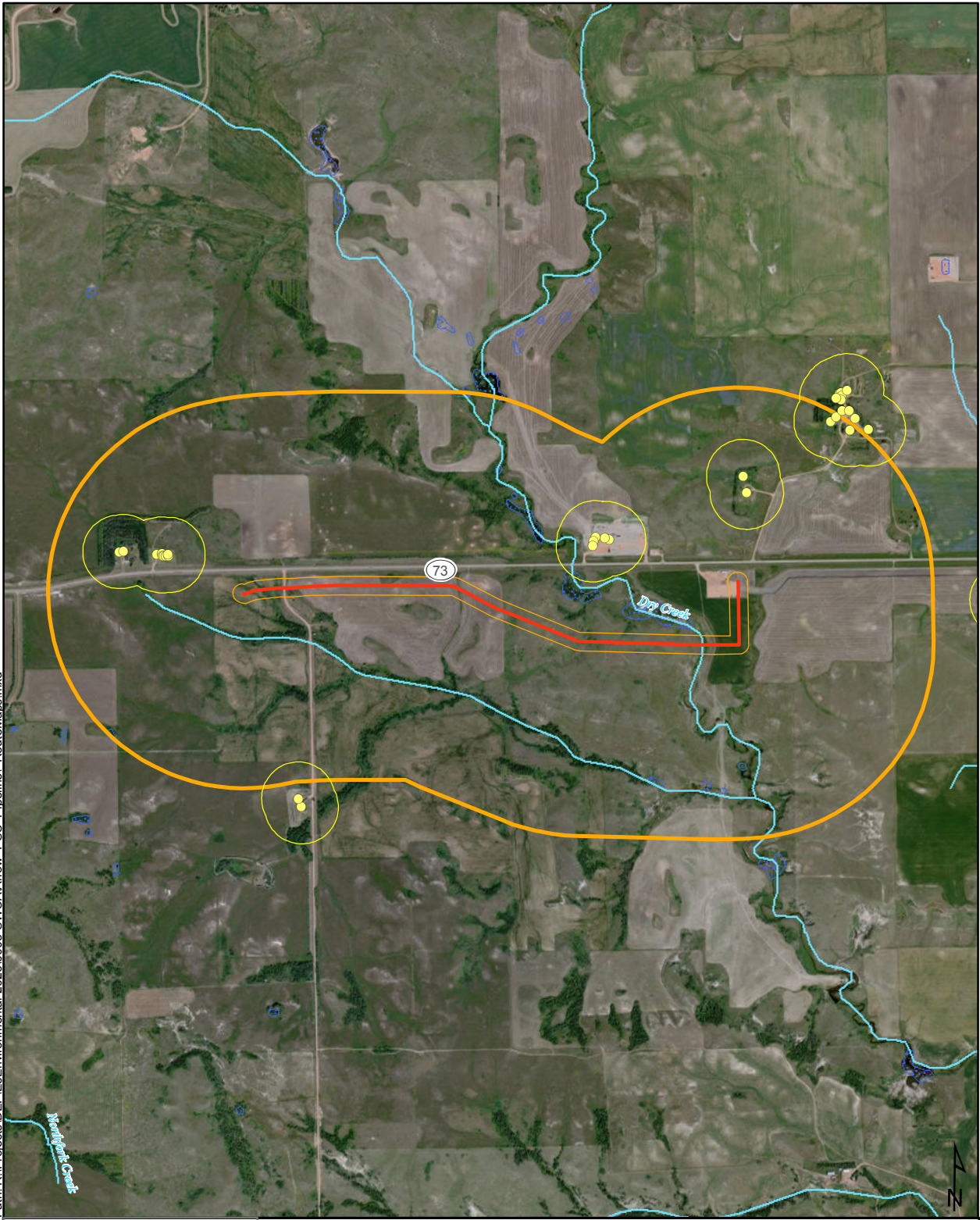


Appendix B

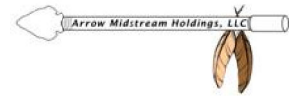
Project Maps

Path: R:\Projects\DEF\E3\Environmental-2026\0008-SWC\Arrow_PSC_Pipeline\RouteMaps.mxd

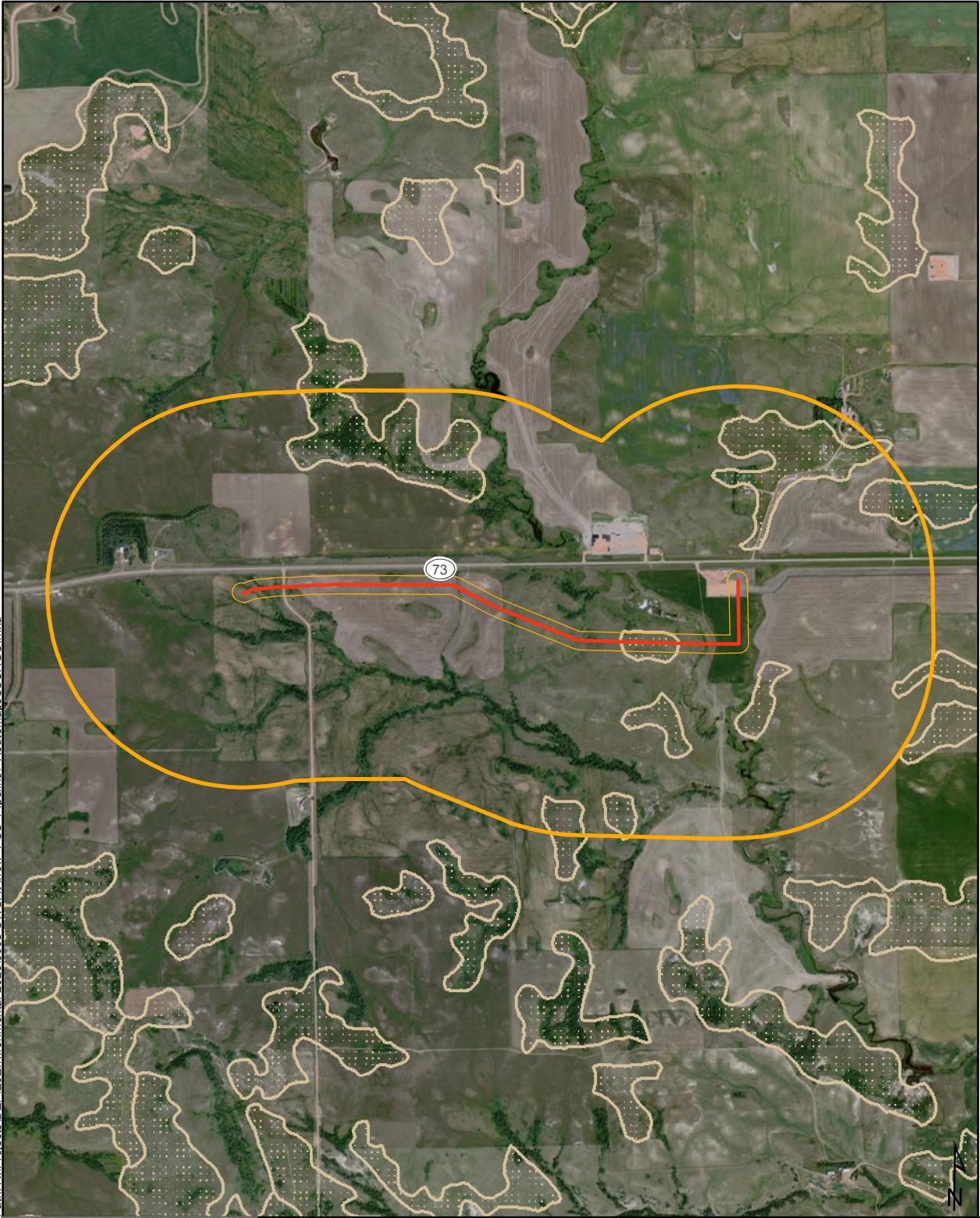


**ARROW
PIPELINE, LLC**
McKenzie County,
North Dakota
Aerial Map






- Proposed Pipeline
 - 250ft Corridor
 - Mile Corridor
 - River or Stream
 - Structure
 - 500ft Buffer
 - NWI Wetland
- 0 1,000 2,000 Feet

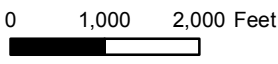


Path: R:\Projects\DEF\ES\Environmental-2026\0008-SWCA\Arrow_PSC_Pipeline\ RouteMaps\SSURGO.mxd



**ARROW
PIPELINE, LLC**
McKenzie County,
North Dakota
Aerial Map

-  Proposed Pipeline
-  250ft Corridor
-  Mile Corridor
-  All hydric NCRS soil
-  Partially hydric NCRS soil



 Arrow Midstream Holdings, LLC






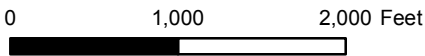
Path: R:\Projects\DEF\ES\Environmental-2026\0008-SWCA\Arrow_PSC_Pipeline\RouteMaps\SSURGO.mxd



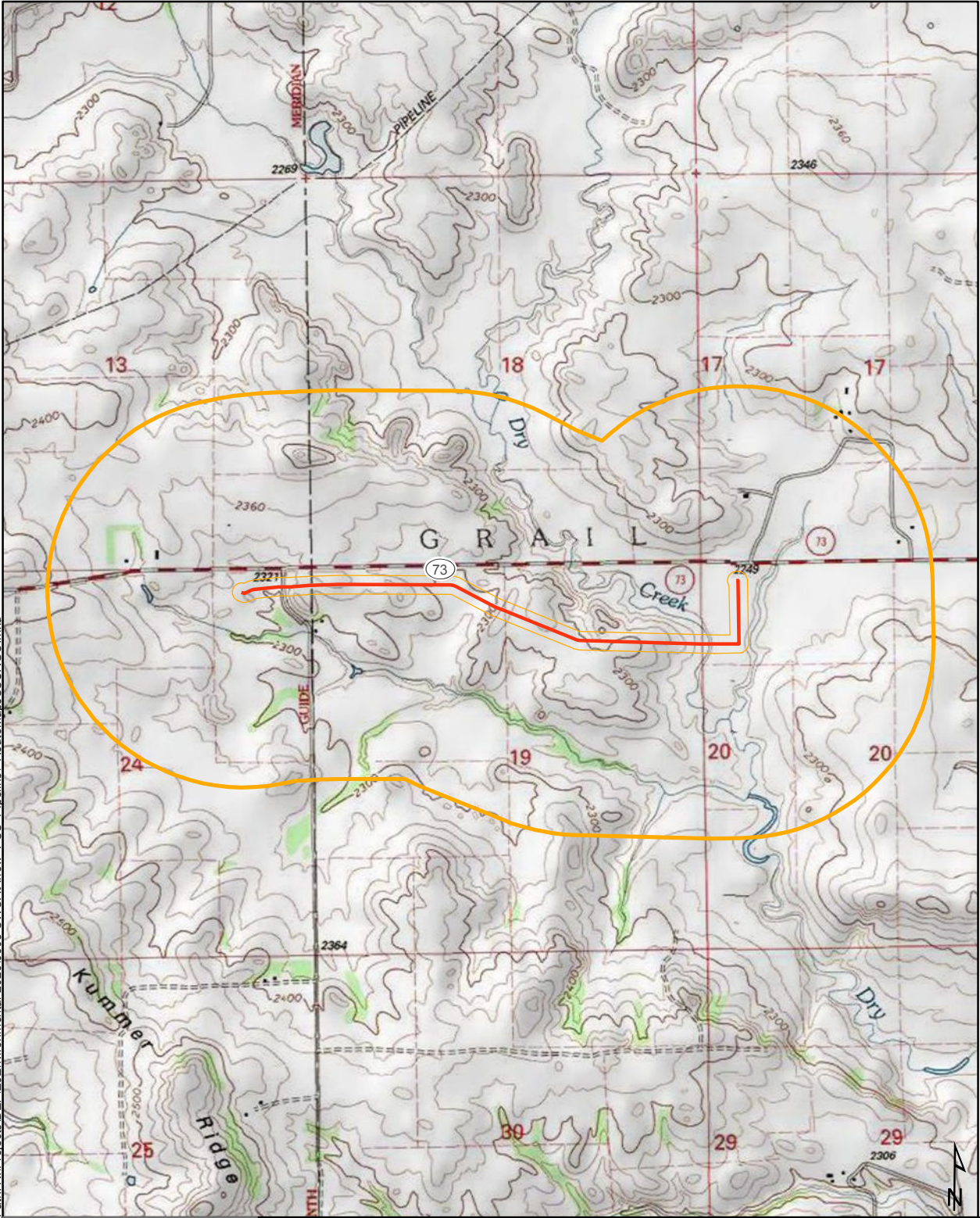
ARROW PIPELINE, LLC

McKenzie County,
North Dakota
Aerial Map




-  Proposed Pipeline
-  100ft Corridor
-  NCRS Soil



Path: R:\Projects\DEF\Environmental-2026\0008-SWC\Arrow_PSC_Pipeline\RouteMaps\SSURGO.mxd



**ARROW
PIPELINE, LLC**
McKenzie County,
North Dakota
Topographic Map

-  Proposed Pipeline
-  250ft Corridor
-  Mile Corridor

