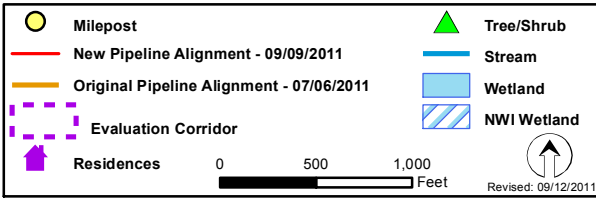
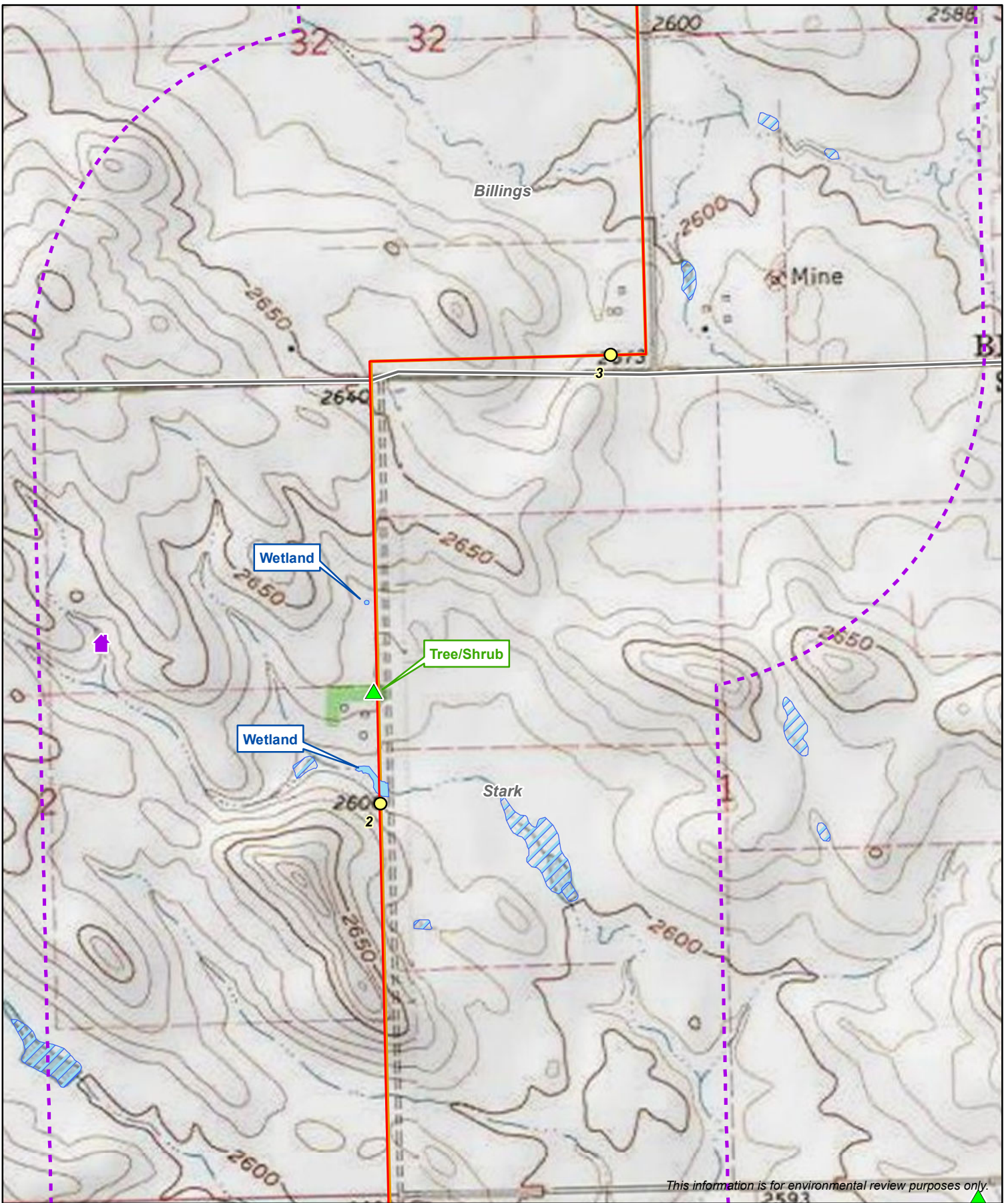


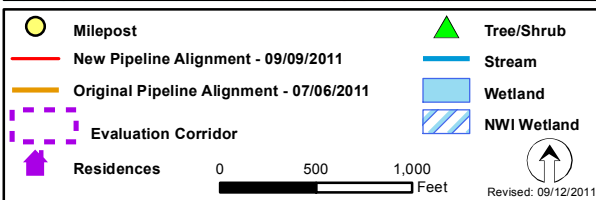
This information is for environmental review purposes only.



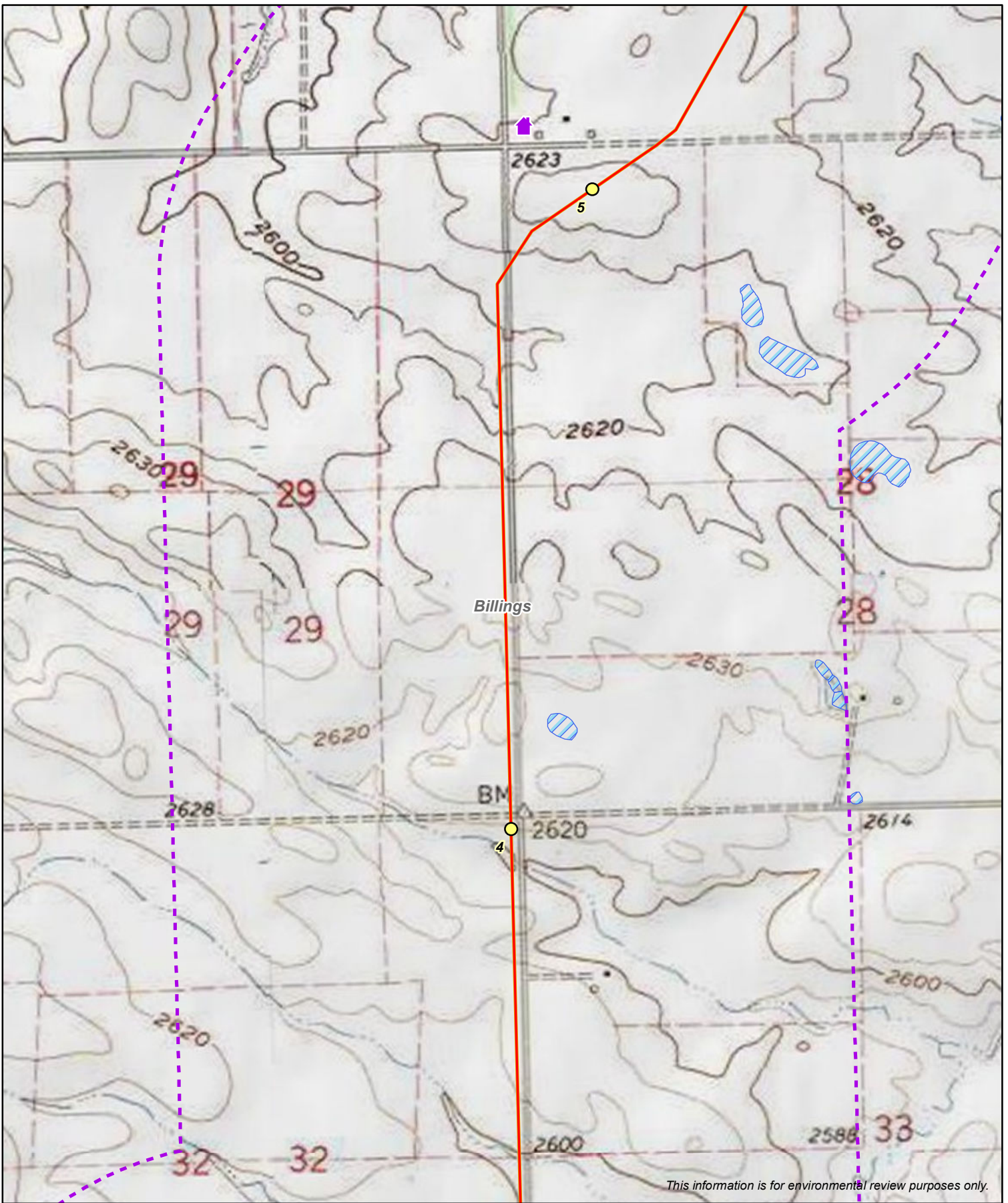
Whiting Oil and Gas Corporation
Belfield Pipeline Project
 Routing Criteria Map - Topographic
 Billings and Stark Counties, North Dakota



This information is for environmental review purposes only.



Whiting Oil and Gas Corporation
Belfield Pipeline Project
 Routing Criteria Map - Topographic
 Billings and Stark Counties, North Dakota



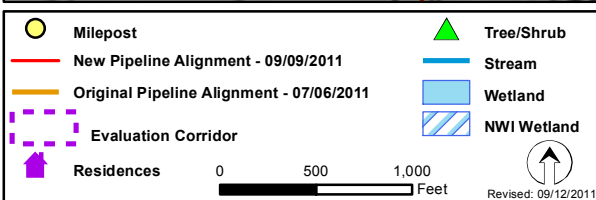
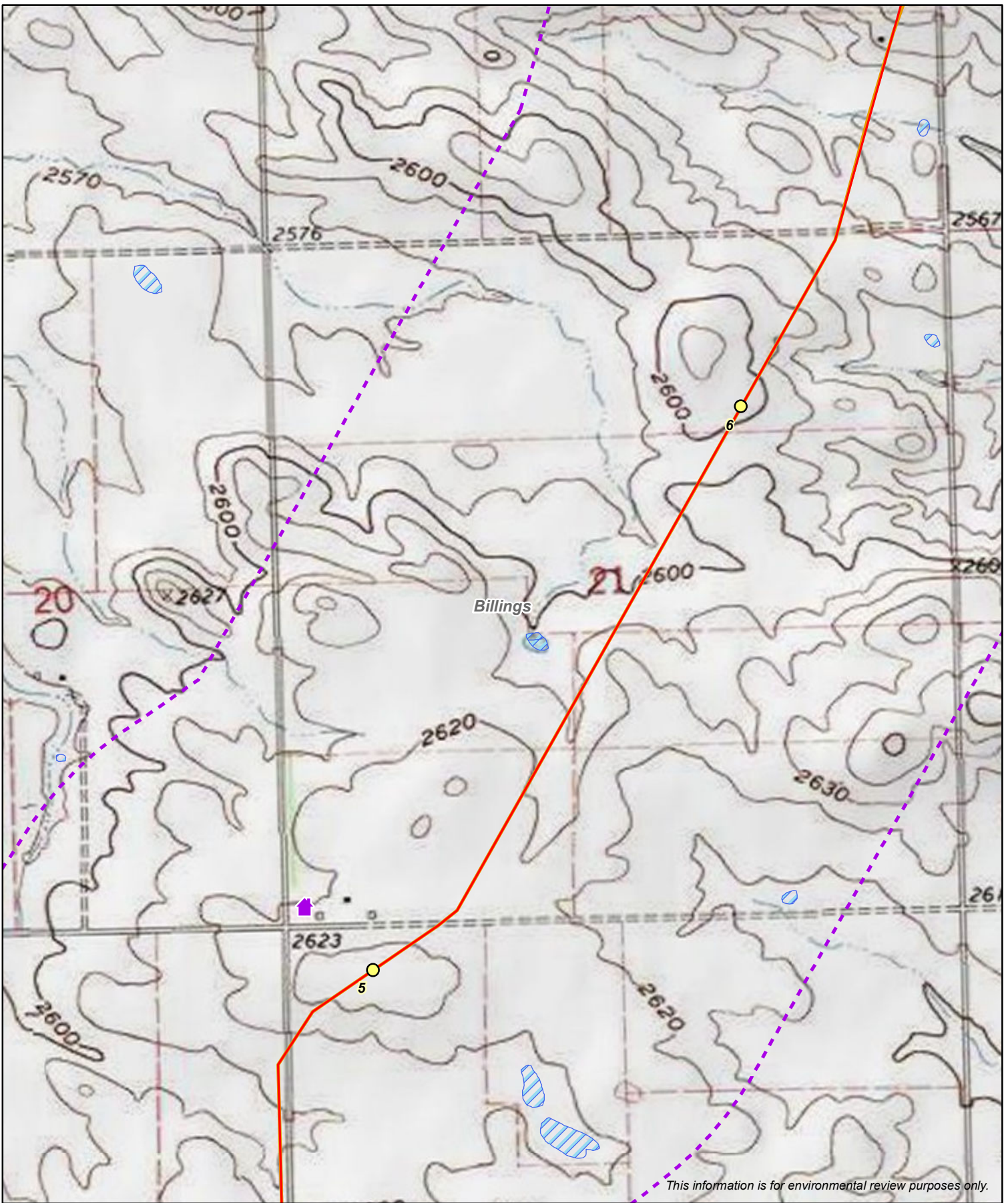
This information is for environmental review purposes only.

	Milepost		Tree/Shrub
	New Pipeline Alignment - 09/09/2011		Stream
	Original Pipeline Alignment - 07/06/2011		Wetland
	Evaluation Corridor		NWI Wetland
	Residences		

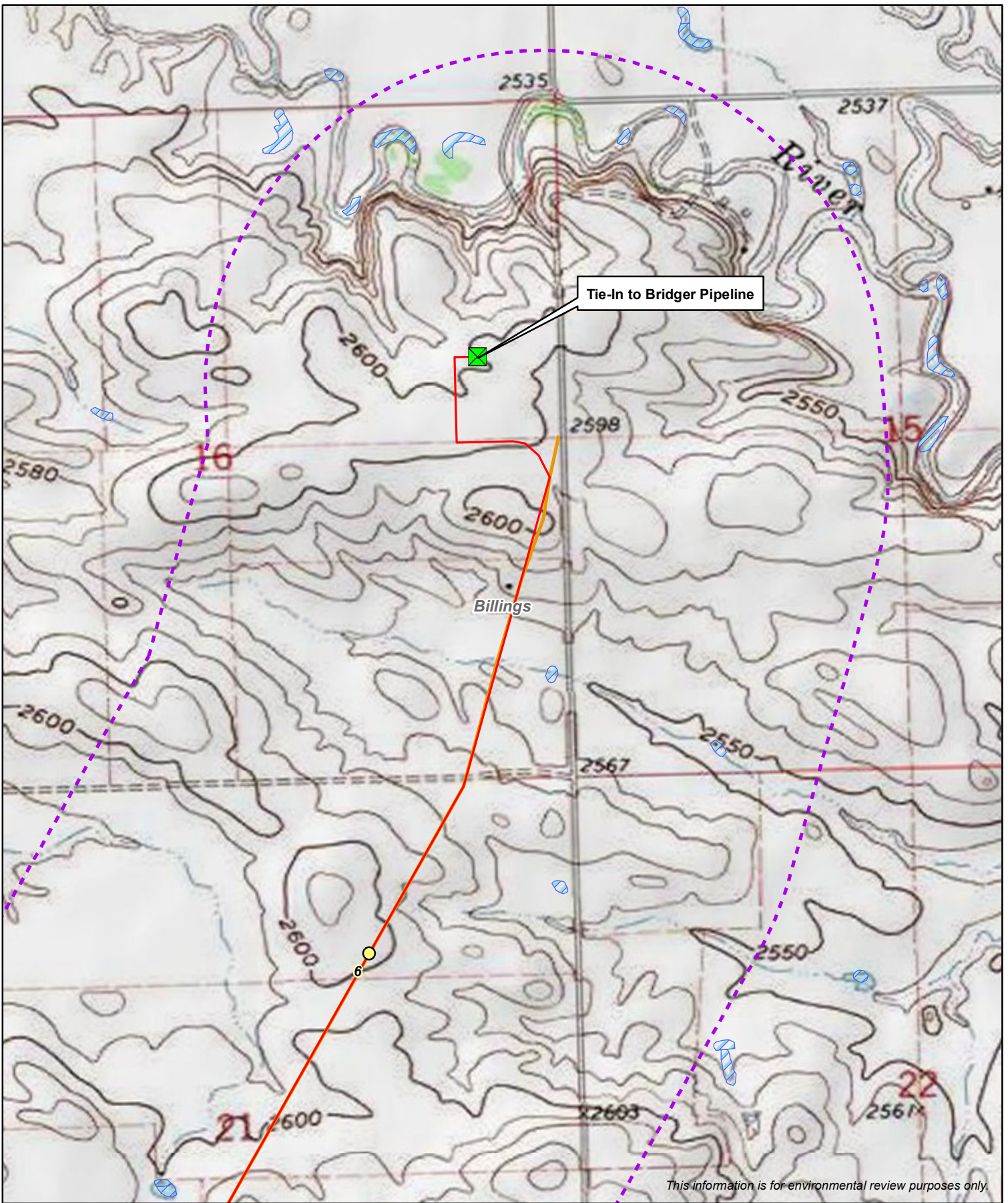
0 500 1,000 Feet

Revised: 09/12/2011

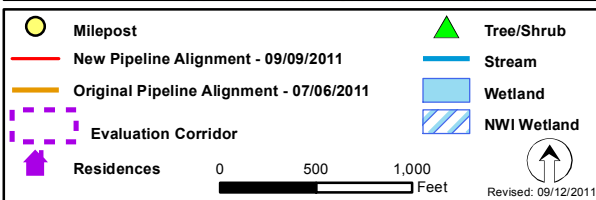
Whiting Oil and Gas Corporation
Belfield Pipeline Project
 Routing Criteria Map - Topographic
 Billings and Stark Counties, North Dakota



Whiting Oil and Gas Corporation
Belfield Pipeline Project
 Routing Criteria Map - Topographic
 Billings and Stark Counties, North Dakota



This information is for environmental review purposes only.



Whiting Oil and Gas Corporation
Belfield Pipeline Project
 Routing Criteria Map - Topographic
 Billings and Stark Counties, North Dakota