

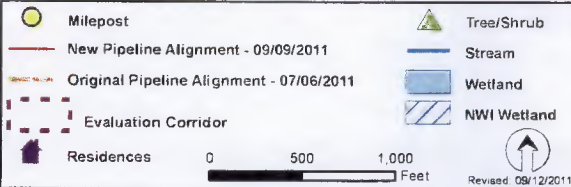
tabbles

4

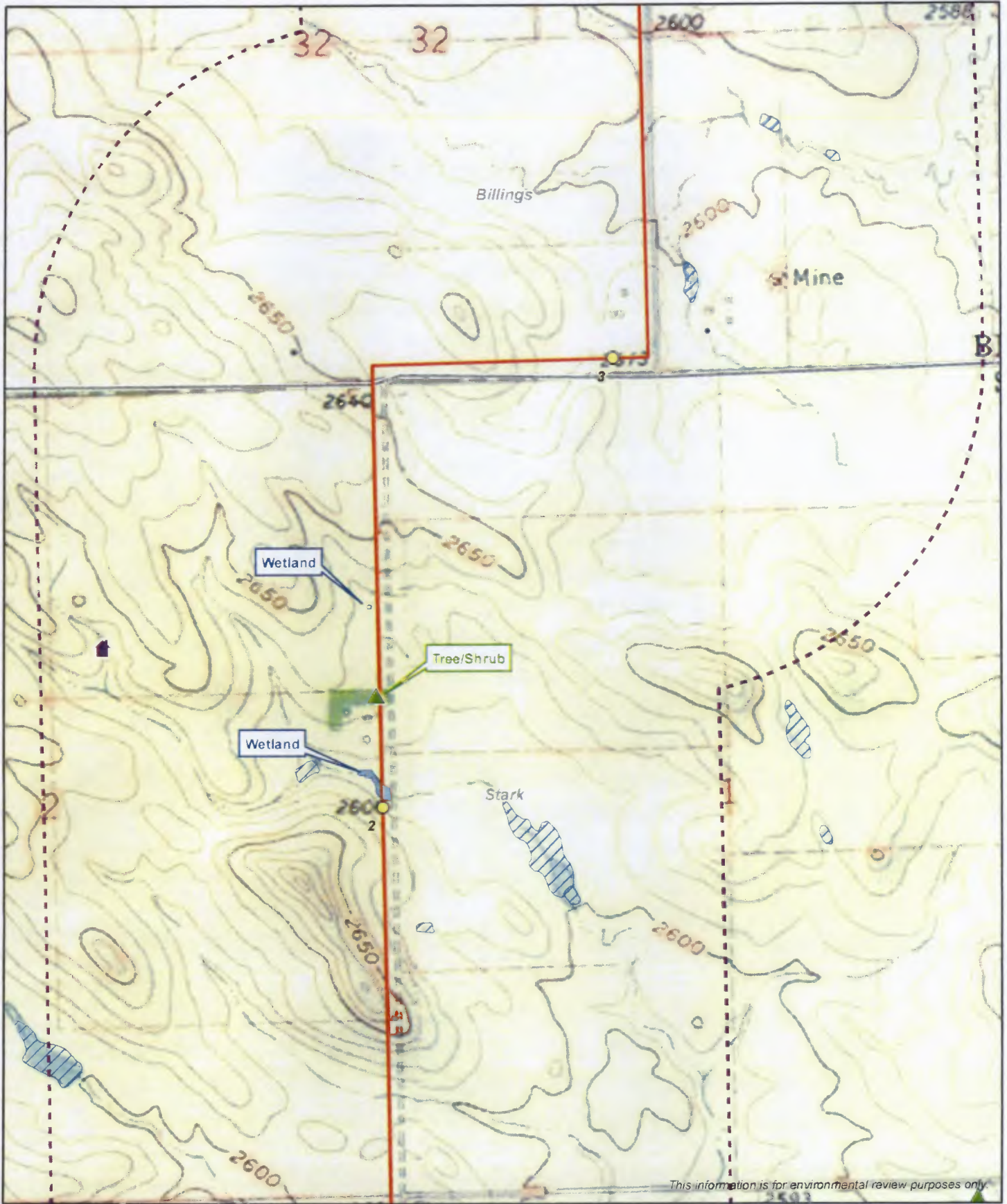


31 PU-11-102 Filed: 10/10/2011 Pages: 5  
Exhibit 4

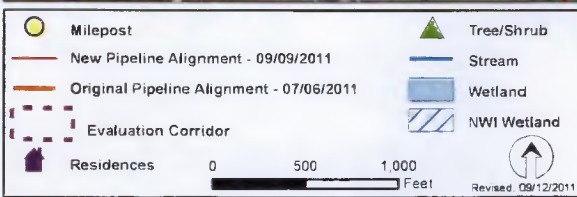
Whiting Oil and Gas Corporation



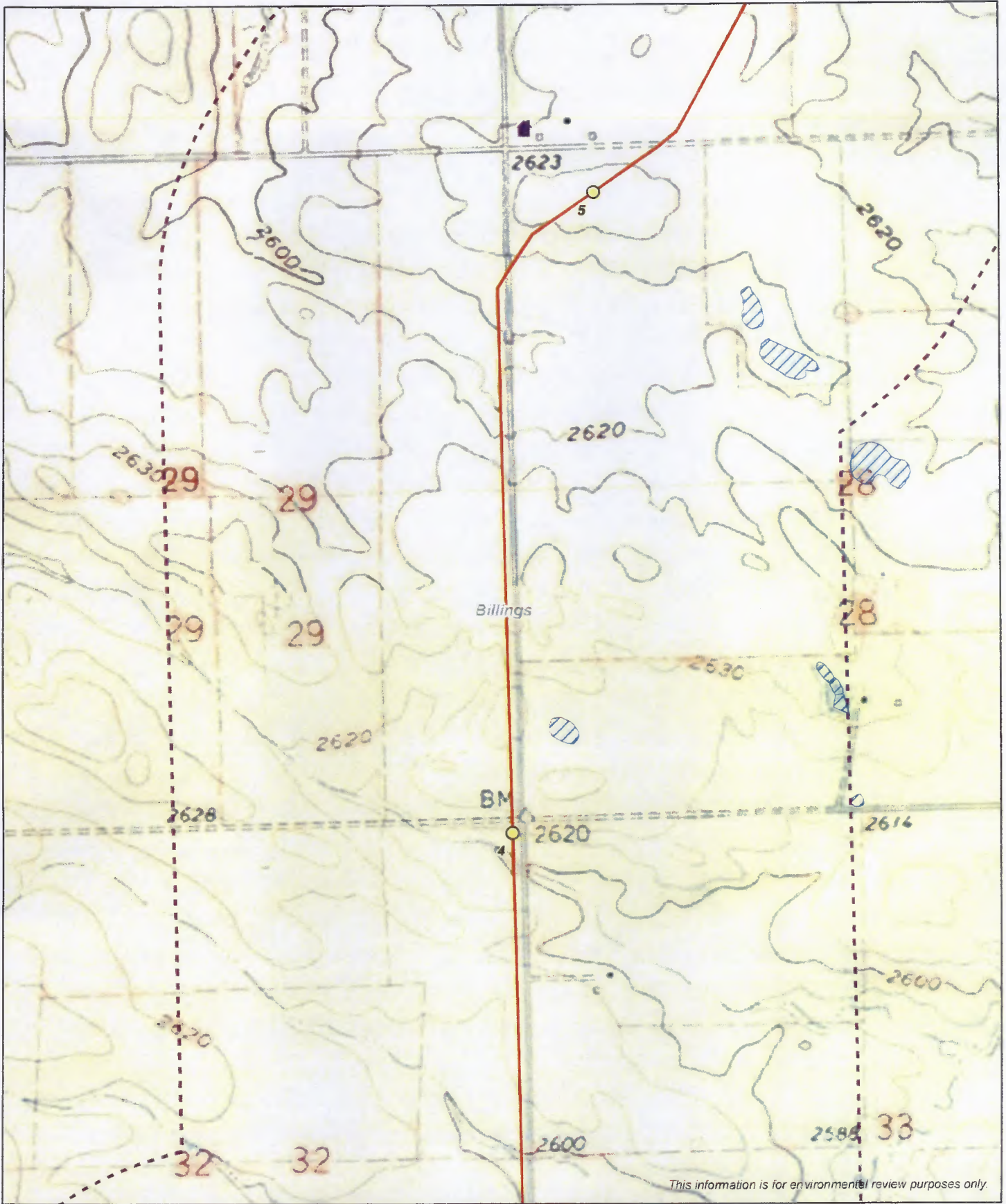
**Whiting Oil and Gas Corporation**  
**Belfield Pipeline Project**  
 Routing Criteria Map - Topographic  
 Billings and Stark Counties, North Dakota



This information is for environmental review purposes only.



**Whiting Oil and Gas Corporation**  
**Belfield Pipeline Project**  
 Routing Criteria Map - Topographic  
 Billings and Stark Counties, North Dakota



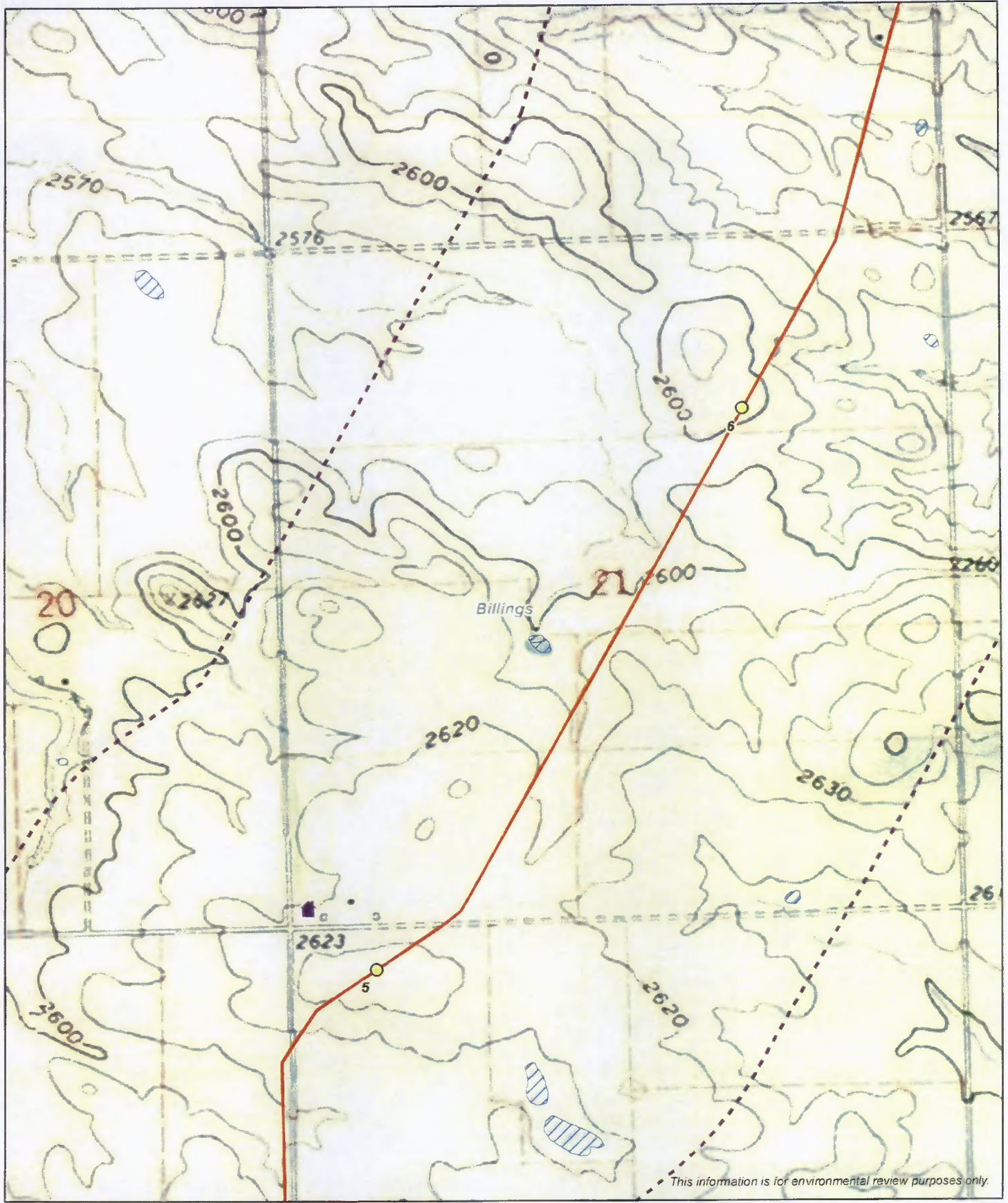
*This information is for environmental review purposes only.*











Milepost	Tree/Shrub
New Pipeline Alignment - 09/09/2011	Stream
Original Pipeline Alignment - 07/06/2011	Wetland
Evaluation Corridor	NWI Wetland
Residences	

0 500 1,000 Feet

Revised: 09/12/2011

**Whiting Oil and Gas Corporation**  
**Belfield Pipeline Project**  
 Routing Criteria Map - Topographic  
 Billings and Stark Counties, North Dakota



 Milepost	 Tree/Shrub
 New Pipeline Alignment - 09/09/2011	 Stream
 Original Pipeline Alignment - 07/06/2011	 Wetland
 Evaluation Corridor	 NWI Wetland
 Residences	

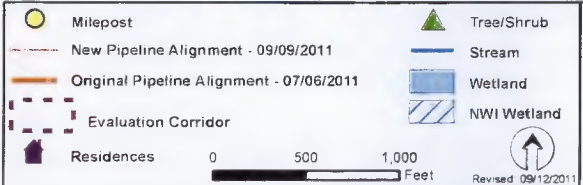
0 500 1,000 Feet

Revised 09/12/2011

**Whiting Oil and Gas Corporation**  
**Belfield Pipeline Project**  
 Routing Criteria Map - Topographic  
 Billings and Stark Counties, North Dakota



*This information is for environmental review purposes only*



**Whiting Oil and Gas Corporation**  
**Belfield Pipeline Project**  
 Routing Criteria Map - Topographic  
 Billings and Stark Counties, North Dakota