

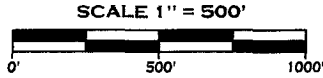
NOTES:

1. Survey is based on North Dakota State Plane System, NAD83 (96), South Zone, U.S. Foot. Bearings shown are grid bearings, distances shown are grid distances. Combined scale factor = 1.0001822550 to go from grid distance to ground distance.
2. Sketches of easements depicted herein are based on information obtained while conducting the survey for easement acquisition and on deeds supplied by the client, and DO NOT CONSTITUTE THE RESULTS OF A FULL BOUNDARY SURVEY.

I, James D. Glasser,
Registered Land Surveyor,
N.D. No. 5771, do hereby
certify that the survey plat
shown hereon was made by
me, or under my direction,
and is true and correct to
the the best of my
knowledge and belief.

James D. Glasser, Registered Land Surveyor
N.D. R.L.S. No. 5771

DATE _____



HIGHLANDS ENGINEERING & SURVEYING, PLLC
253 24th Street East
Dickinson, ND 58601
701.483.2444 office
701.483.2610 fax
www.highlandseng.com

PROPOSED EASEMENT ON AND ACROSS THE
NE 1/4 SEC. 14, T140N, R99W - 5th PRINCIPAL MERIDIAN
STARK COUNTY, NORTH DAKOTA

WHITING OIL & GAS CORPORATION
1700 BROADWAY, SUITE 2300
DENVER, CO 80290-2300



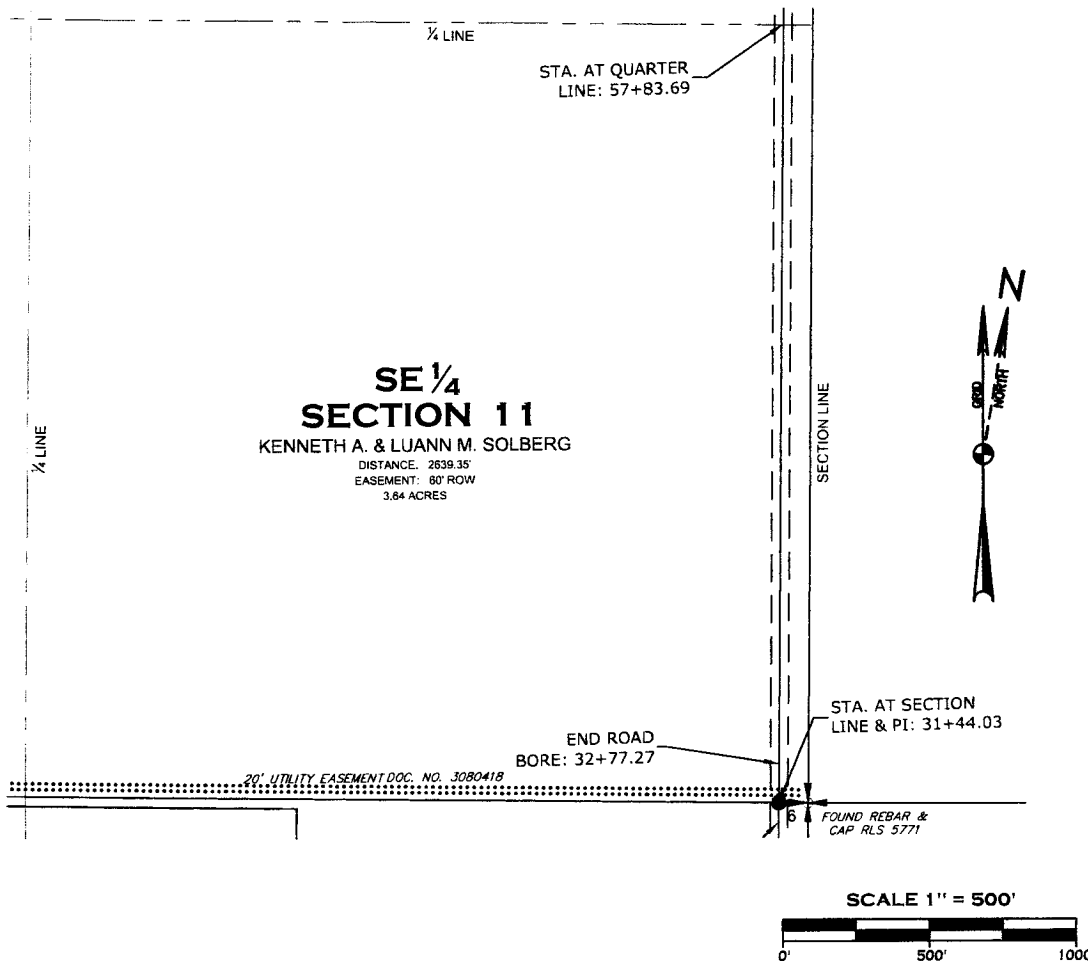
DATE: SEPTEMBER 9, 2011
SHEET NUMBER: 1 OF 17
DRAWN BY: DVP
PROJECT NO. 112317



Whiting Petroleum Corporation

BELFIELD OIL PIPELINE

SE 1/4 SECTION 11, TOWNSHIP 140 NORTH, RANGE 99 WEST
OF THE 5th PRINCIPAL MERIDIAN, STARK COUNTY, NORTH DAKOTA
EXHIBIT "A"



NOTES:

1. Survey is based on North Dakota State Plane System, NAD83 (96), South Zone, U.S. Foot. Bearings shown are grid bearings, distances shown are grid distances. Combined scale factor = 1.0001822550 to go from grid distance to ground distance.

2. Sketches of easements depicted herein are based on information obtained while conducting the survey for easement acquisition and on deeds supplied by the client, and DO NOT CONSTITUTE THE RESULTS OF A FULL BOUNDARY SURVEY.

I, James D. Glasser,
Registered Land Surveyor,
N.D. No. 5771, do hereby
certify that the survey plat
shown hereon was made by
me, or under my direction,
and is true and correct to
the the best of my
knowledge and belief.

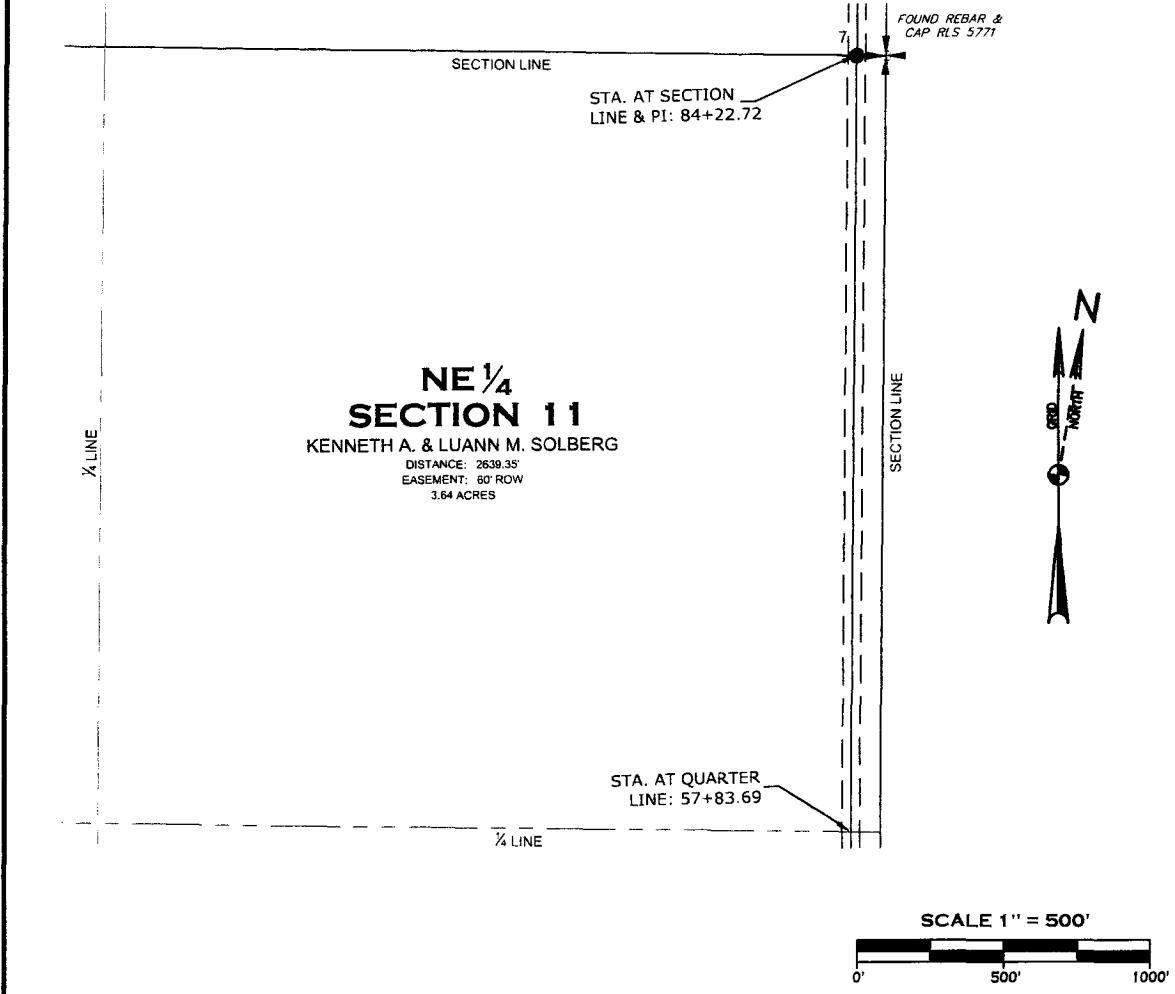
James D. Glasser, Registered Land Surveyor
N.D. R.L.S. No. 5771

DATE _____

HIGHLANDS ENGINEERING & SURVEYING, PLLC 253 24th Street East Dickinson, ND 58601 701.483.2444 office 701.483.2610 fax www.highlandseng.com	PROPOSED EASEMENT ON AND ACROSS THE SE 1/4 SEC. 11, T140N, R99W - 5th PRINCIPAL MERIDIAN STARK COUNTY, NORTH DAKOTA	WHITING OIL & GAS CORPORATION 1700 BROADWAY, SUITE 2300 DENVER, CO 80290-2300
		DATE: SEPTEMBER 9, 2011 SHEET NUMBER: 2 OF 17 DRAWN BY: DVP PROJECT NO. 112317

BELFIELD OIL PIPELINE

NE 1/4 SECTION 11, TOWNSHIP 140 NORTH, RANGE 99 WEST
OF THE 5th PRINCIPAL MERIDIAN, STARK COUNTY, NORTH DAKOTA
EXHIBIT "A"



NOTES:

1. Survey is based on North Dakota State Plane System, NAD83 (96), South Zone, U.S. Foot. Bearings shown are grid bearings, distances shown are grid distances. Combined scale factor = 1.0001822550 to go from grid distance to ground distance.

2. Sketches of easements depicted herein are based on information obtained while conducting the survey for easement acquisition and on deeds supplied by the client, and DO NOT CONSTITUTE THE RESULTS OF A FULL BOUNDARY SURVEY.

I, James D. Glasser,
Registered Land Surveyor,
N.D. No. 5771, do hereby
certify that the survey plat
shown hereon was made by
me, or under my direction,
and is true and correct to
the the best of my
knowledge and belief.

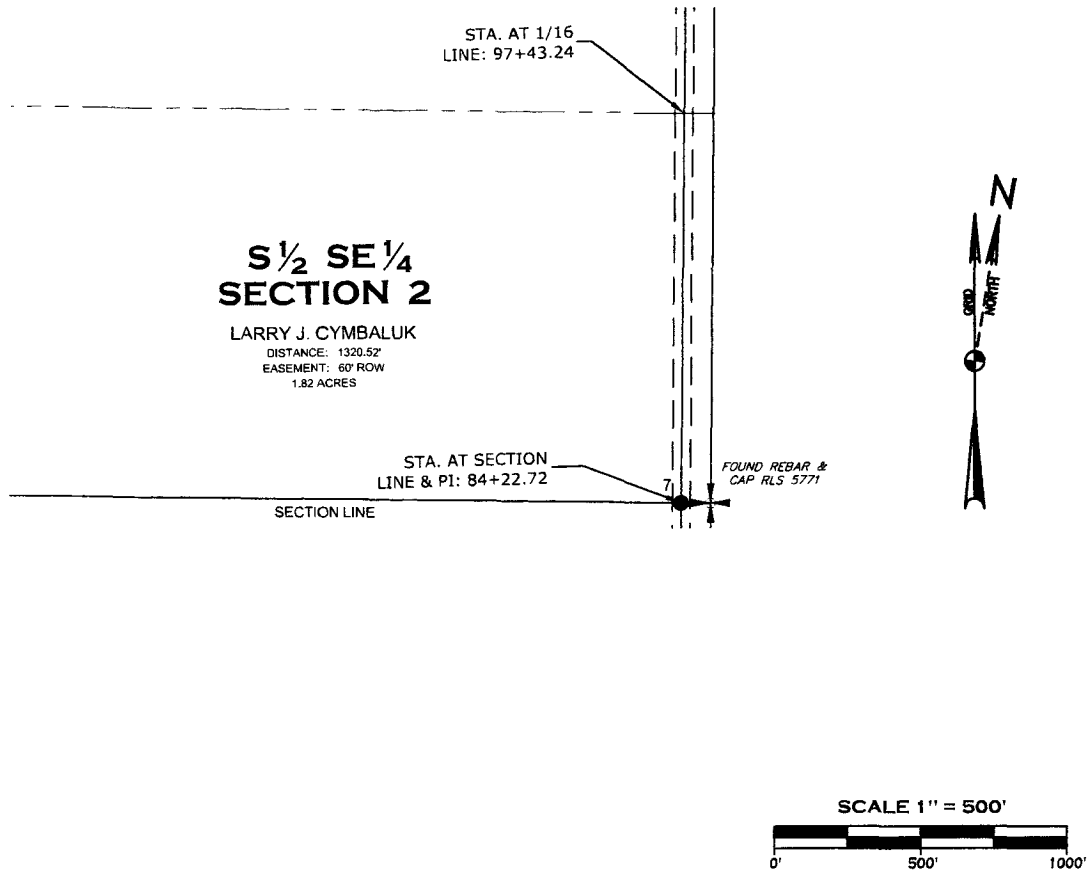
James D. Glasser, Registered Land Surveyor
N.D. R.L.S. No. 5771

DATE

HIGHLANDS ENGINEERING & SURVEYING, PLLC 253 24th Street East Dickinson, ND 58601 701.483.2444 office 701.483.2610 fax www.highlandseng.com	PROPOSED EASEMENT ON AND ACROSS THE NE 1/4 SEC. 11, T140N, R99W - 5th PRINCIPAL MERIDIAN STARK COUNTY, NORTH DAKOTA	WHITING OIL & GAS CORPORATION 1700 BROADWAY, SUITE 2300 DENVER, CO 80290-2300
		DATE: SEPTEMBER 9, 2011 SHEET NUMBER: 3 OF 17 DRAWN BY: DVP PROJECT NO. 112317

BELFIELD OIL PIPELINE

S 1/2 SE 1/4 SECTION 2, TOWNSHIP 140 NORTH, RANGE 99 WEST
OF THE 5th PRINCIPAL MERIDIAN, STARK COUNTY, NORTH DAKOTA
EXHIBIT "A"



**S 1/2 SE 1/4
SECTION 2**

LARRY J. CYMBALUK
DISTANCE: 1320.52'
EASEMENT: 60' ROW
1.82 ACRES

NOTES:

1. Survey is based on North Dakota State Plane System, NAD83 (96), South Zone, U.S. Foot. Bearings shown are grid bearings, distances shown are grid distances. Combined scale factor = 1.0001822550 to go from grid distance to ground distance.
2. Sketches of easements depicted herein are based on information obtained while conducting the survey for easement acquisition and on deeds supplied by the client, and DO NOT CONSTITUTE THE RESULTS OF A FULL BOUNDARY SURVEY.

I, James D. Glasser,
Registered Land Surveyor,
N.D. No. 5771, do hereby
certify that the survey plat
shown hereon was made by
me, or under my direction,
and is true and correct to
the the best of my
knowledge and belief.

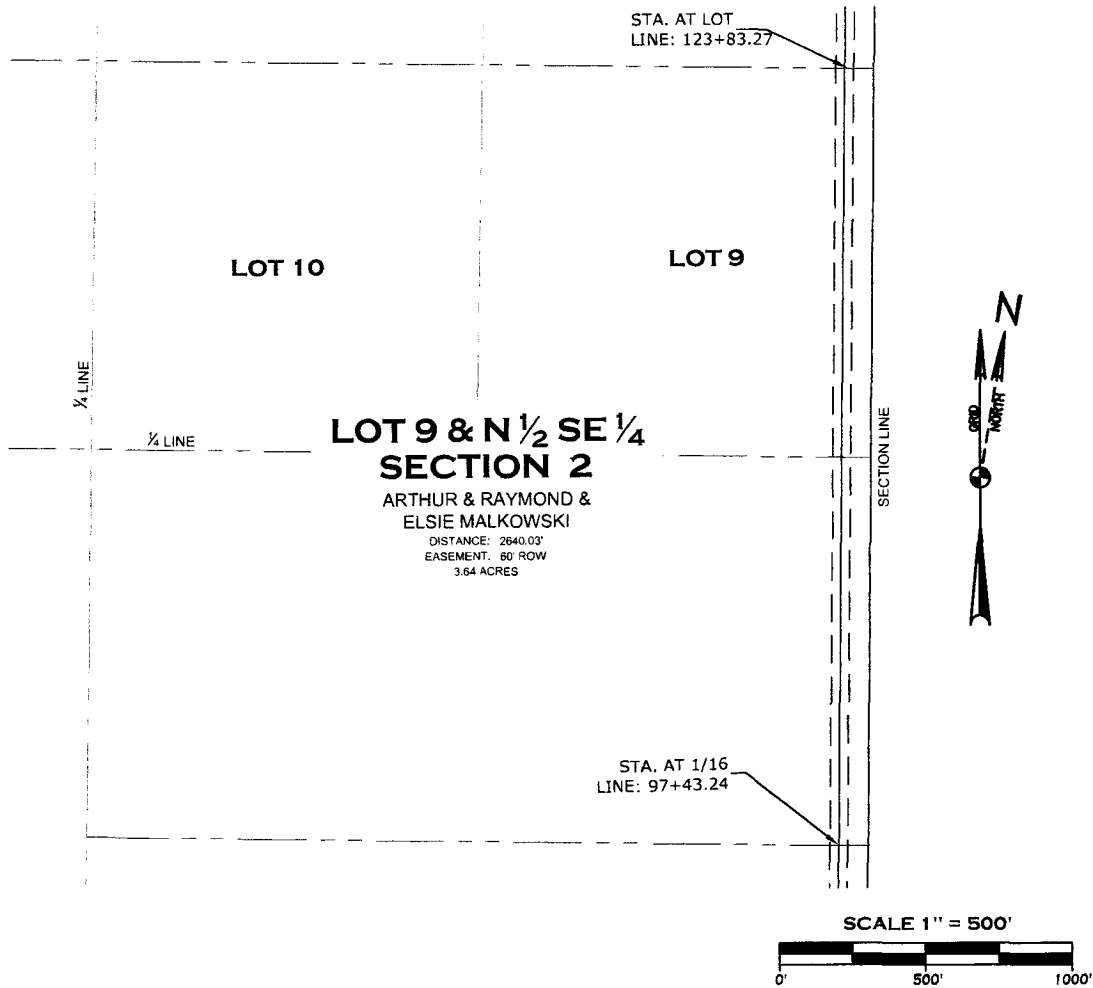
James D. Glasser, Registered Land Surveyor
N.D. R.L.S. No. 5771

DATE _____

HIGHLANDS ENGINEERING & SURVEYING, PLLC 253 24th Street East Dickinson, ND 58601 701.483.2444 office 701.483.2610 fax www.highlandseng.com	PROPOSED EASEMENT ON AND ACROSS THE S 1/2 SE 1/4 SEC. 2, T140N, R99W - 5th PRINCIPAL MERIDIAN STARK COUNTY, NORTH DAKOTA	WHITING OIL & GAS CORPORATION 1700 BROADWAY, SUITE 2300 DENVER, CO 80290-2300
		DATE: SEPTEMBER 9, 2011 SHEET NUMBER: 4 OF 17 DRAWN BY: DVP PROJECT NO. 112317

BELFIELD OIL PIPELINE

LOT 9 & N 1/2 SE 1/4, SECTION 2, TOWNSHIP 140 NORTH, RANGE 99 WEST
OF THE 5th PRINCIPAL MERIDIAN, STARK COUNTY, NORTH DAKOTA
EXHIBIT "A"



NOTES:

1. Survey is based on North Dakota State Plane System, NAD83 (96), South Zone, U.S. Foot. Bearings shown are grid bearings, distances shown are grid distances. Combined scale factor = 1.0001822550 to go from grid distance to ground distance.
2. Sketches of easements depicted herein are based on information obtained while conducting the survey for easement acquisition and on deeds supplied by the client, and DO NOT CONSTITUTE THE RESULTS OF A FULL BOUNDARY SURVEY.

I, James D. Glasser,
Registered Land Surveyor,
N.D. No. 5771, do hereby
certify that the survey plat
shown hereon was made by
me, or under my direction,
and is true and correct to
the the best of my
knowledge and belief.

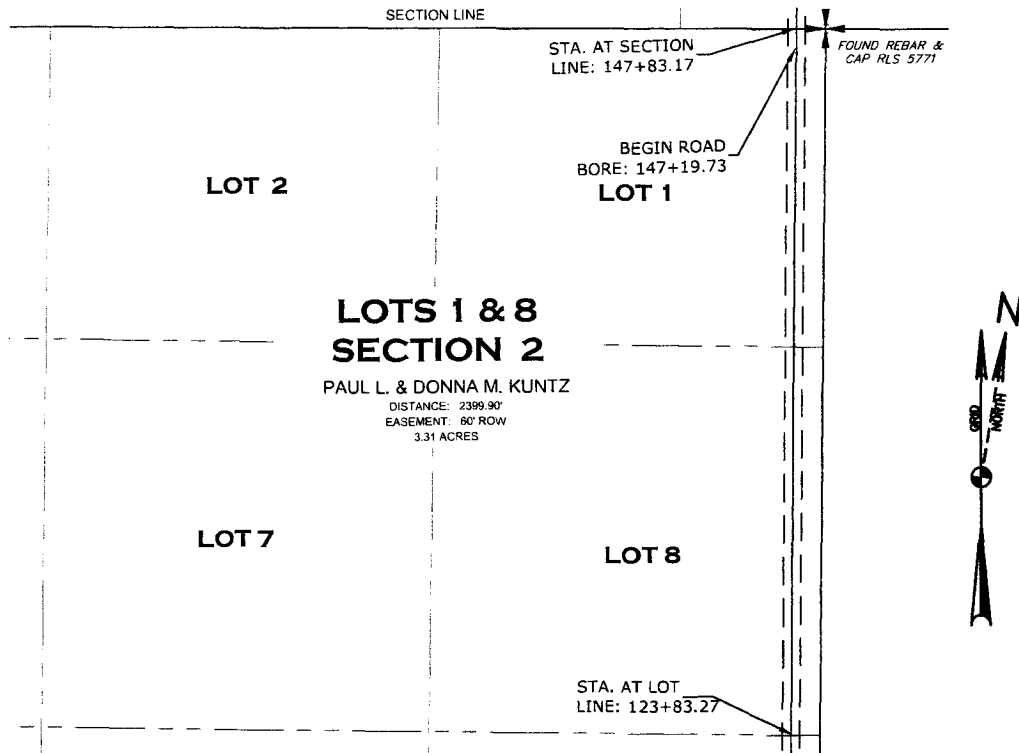
James D. Glasser, Registered Land Surveyor
N.D. R.L.S. No. 5771

DATE

HIGHLANDS ENGINEERING & SURVEYING, PLLC 253 24th Street East Dickinson, ND 58601 701.483.2444 office 701.483.2610 fax www.highlandseng.com	PROPOSED EASEMENT ON AND ACROSS THE LOT 9 & N 1/2 SE 1/4 SEC. 2, T140N, R99W 5th PRINCIPAL MERIDIAN, STARK COUNTY, NORTH DAKOTA	WHITING OIL & GAS CORPORATION 1700 BROADWAY, SUITE 2300 DENVER, CO 80290-2300
		DATE: SEPTEMBER 9, 2011 SHEET NUMBER: 5 OF 17 DRAWN BY: DVP PROJECT NO. 112317

BELFIELD OIL PIPELINE

LOTS 1 & 8, SECTION 2, TOWNSHIP 140 NORTH, RANGE 99 WEST
OF THE 5th PRINCIPAL MERIDIAN, STARK COUNTY, NORTH DAKOTA
EXHIBIT "A"



NOTES:

1. Survey is based on North Dakota State Plane System, NAD83 (96), South Zone, U.S. Foot. Bearings shown are grid bearings, distances shown are grid distances. Combined scale factor = 1.0001822550 to go from grid distance to ground distance.

2. Sketches of easements depicted herein are based on information obtained while conducting the survey for easement acquisition and on deeds supplied by the client, and DO NOT CONSTITUTE THE RESULTS OF A FULL BOUNDARY SURVEY.

I, James D. Glasser,
Registered Land Surveyor,
N.D. No. 5771, do hereby
certify that the survey plat
shown hereon was made by
me, or under my direction,
and is true and correct to
the the best of my
knowledge and belief.

James D. Glasser, Registered Land Surveyor
N.D. R.L.S. No. 5771

DATE

**HIGHLANDS
ENGINEERING &
SURVEYING, PLLC**
253 24th Street East
Dickinson, ND 58601
701.483.2444 office
701.483.2610 fax
www.highlandseng.com

PROPOSED EASEMENT ON AND ACROSS THE
LOTS 1 & 8, SEC. 2, T140N, R99W, 5th PRINCIPAL MERIDIAN
STARK COUNTY, NORTH DAKOTA

WHITING OIL & GAS CORPORATION
1700 BROADWAY, SUITE 2300
DENVER, CO 80290-2300

HIGHLANDS
ENGINEERING & SURVEYING, PLLC

DATE: SEPTEMBER 9, 2011

SHEET NUMBER: 6 OF 17

DRAWN BY: DVP

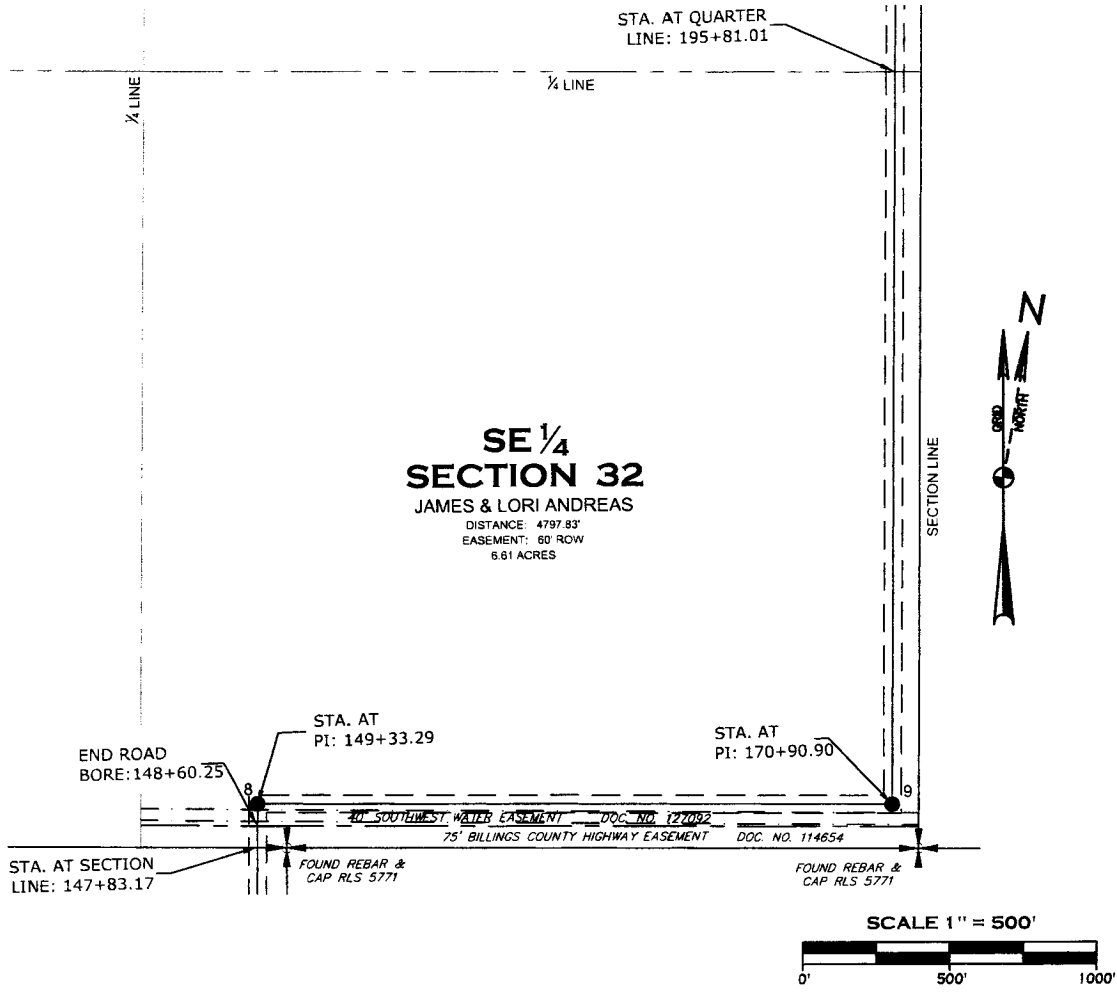
PROJECT NO. 112317



Whiting Petroleum Corporation

BELFIELD OIL PIPELINE

SE 1/4, SECTION 32, TOWNSHIP 141 NORTH, RANGE 98 WEST
OF THE 5th PRINCIPAL MERIDIAN, BILLINGS COUNTY, NORTH DAKOTA
EXHIBIT "A"



NOTES:

- Survey is based on North Dakota State Plane System, NAD83 (96), South Zone, U.S. Foot. Bearings shown are grid bearings, distances shown are grid distances. Combined scale factor = 1.0001822550 to go from grid distance to ground distance.
- Sketches of easements depicted herein are based on information obtained while conducting the survey for easement acquisition and on deeds supplied by the client, and DO NOT CONSTITUTE THE RESULTS OF A FULL BOUNDARY SURVEY.

I, James D. Glasser,
Registered Land Surveyor,
N.D. No. 5771, do hereby
certify that the survey plat
shown hereon was made by
me, or under my direction,
and is true and correct to
the the best of my
knowledge and belief.

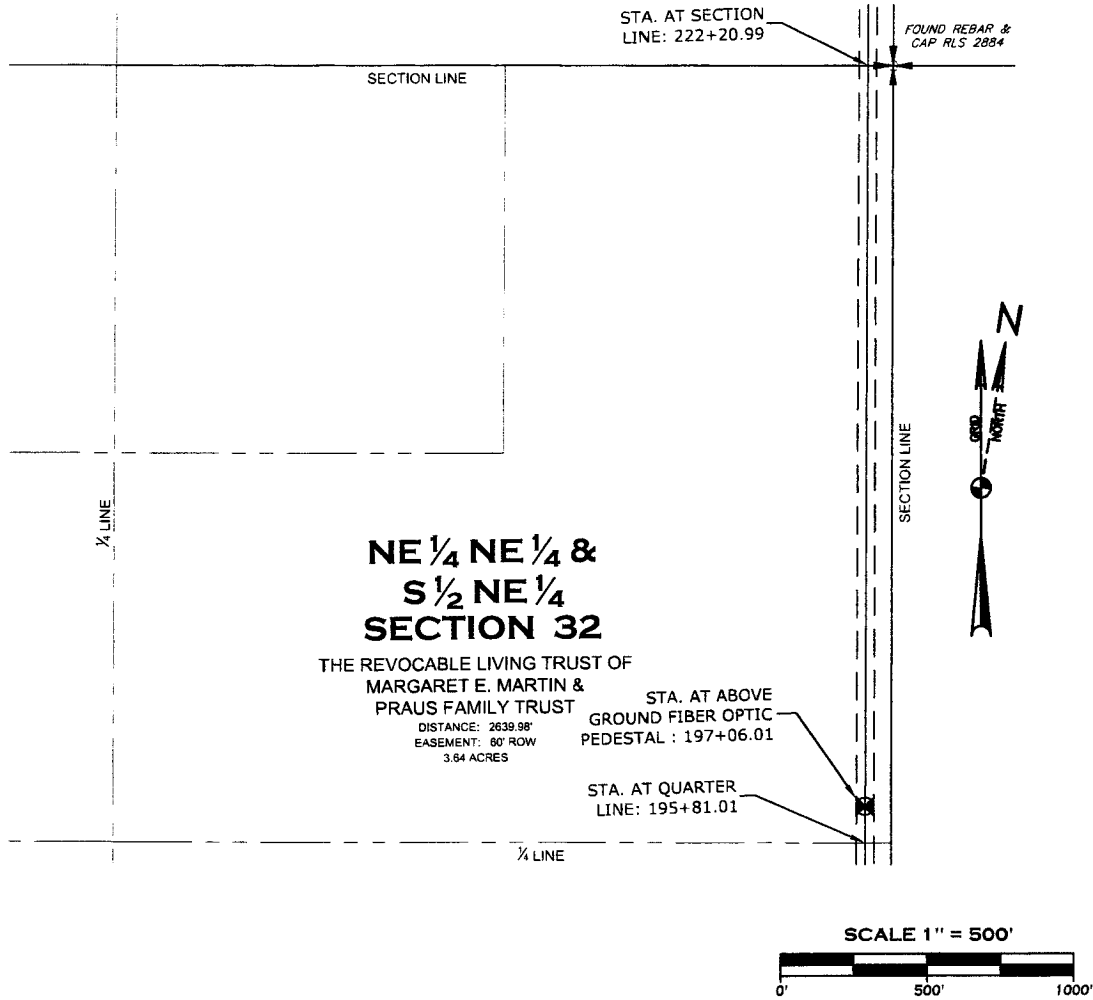
James D. Glasser, Registered Land Surveyor
N.D. R.L.S. No. 5771

DATE _____

HIGHLANDS ENGINEERING & SURVEYING, PLLC 253 24th Street East Dickinson, ND 58601 701.483.2444 office 701.483.2610 fax www.highlandseng.com	PROPOSED EASEMENT ON AND ACROSS THE SE 1/4, SEC. 32, T141N, R98W, 5th PRINCIPAL MERIDIAN BILLINGS COUNTY, NORTH DAKOTA	WHITING OIL & GAS CORPORATION 1700 BROADWAY, SUITE 2300 DENVER, CO 80290-2300
		DATE: SEPTEMBER 9, 2011 SHEET NUMBER: 7 OF 17 DRAWN BY: DVP PROJECT NO. 112317

BELFIELD OIL PIPELINE

NE 1/4 NE 1/4 & S 1/2 NE 1/4, SECTION 32, TOWNSHIP 141 NORTH, RANGE 98 WEST
OF THE 5th PRINCIPAL MERIDIAN, BILLINGS COUNTY, NORTH DAKOTA
EXHIBIT "A"





NOTES:

1. Survey is based on North Dakota State Plane System, NAD83 (96), South Zone, U.S. Foot. Bearings shown are grid bearings, distances shown are grid distances. Combined scale factor = 1.0001822550 to go from grid distance to ground distance.
2. Sketches of easements depicted herein are based on information obtained while conducting the survey for easement acquisition and on deeds supplied by the client, and DO NOT CONSTITUTE THE RESULTS OF A FULL BOUNDARY SURVEY.

I, James D. Glasser,
Registered Land Surveyor,
N.D. No. 5771, do hereby
certify that the survey plat
shown hereon was made by
me, or under my direction,
and is true and correct to
the the best of my
knowledge and belief.

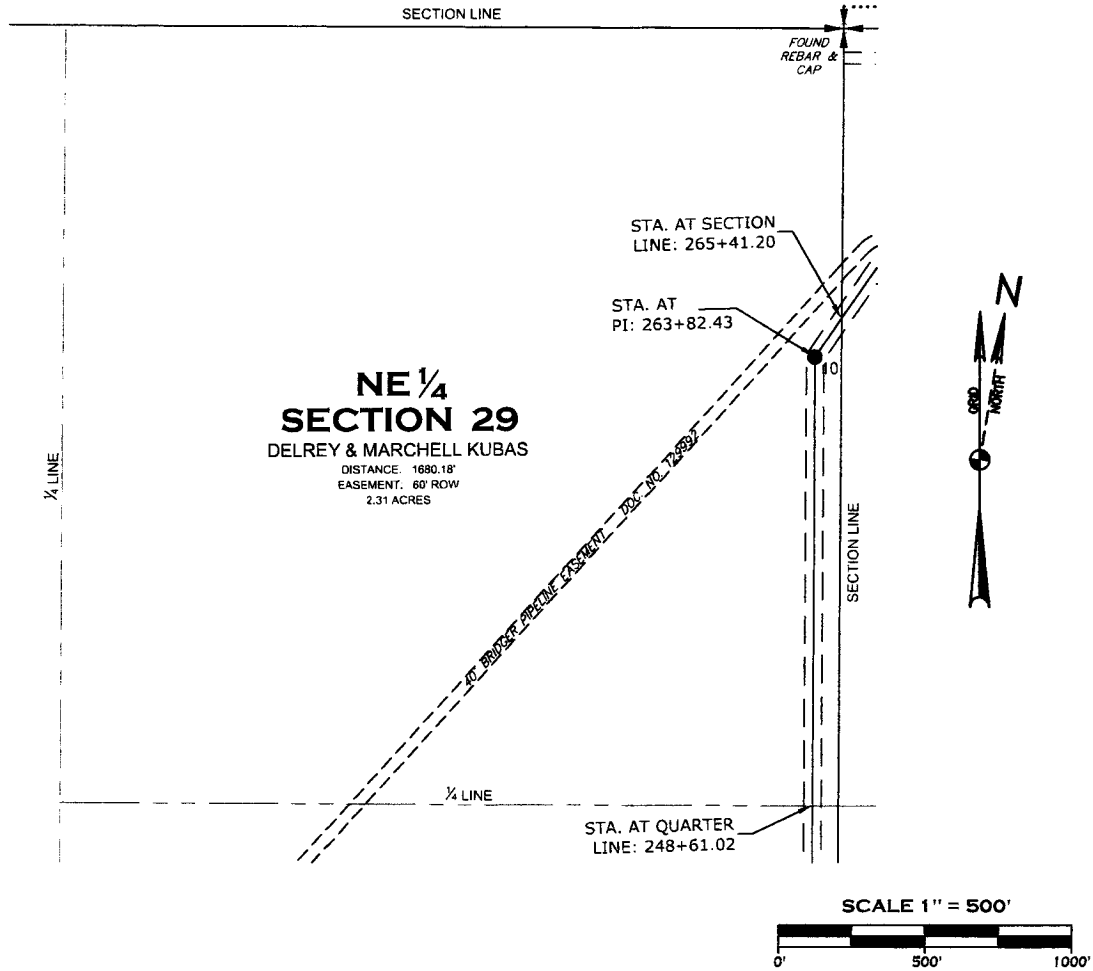
DATE _____

James D. Glasser, Registered Land Surveyor
N.D. R.L.S. No. 5771

<p>HIGHLANDS ENGINEERING & SURVEYING, PLLC 253 24th Street East Dickinson, ND 58601 701.483.2444 office 701.483.2610 fax www.highlandseng.com</p>	<p>PROPOSED EASEMENT ON AND ACROSS THE NE 1/4 NE 1/4 & S 1/2 NE 1/4, SEC. 32, T141N, R98W, 5th PRINCIPAL MERIDIAN BILLINGS COUNTY, NORTH DAKOTA</p>	<p>WHITING OIL & GAS CORPORATION 1700 BROADWAY, SUITE 2300 DENVER, CO 80290-2300</p>
	<p>DATE: SEPTEMBER 20, 2011 SHEET NUMBER: 8 OF 17 DRAWN BY: DVP PROJECT NO. 112317</p>	

BELFIELD OIL PIPELINE

NE 1/4, SECTION 29, TOWNSHIP 141 NORTH, RANGE 98 WEST
OF THE 5th PRINCIPAL MERIDIAN, BILLINGS COUNTY, NORTH DAKOTA
EXHIBIT "A"





NOTES:

- Survey is based on North Dakota State Plane System, NAD83 (96), South Zone, U.S. Foot. Bearings shown are grid bearings, distances shown are grid distances. Combined scale factor = 1.0001822550 to go from grid distance to ground distance.
- Sketches of easements depicted herein are based on information obtained while conducting the survey for easement acquisition and on deeds supplied by the client, and DO NOT CONSTITUTE THE RESULTS OF A FULL BOUNDARY SURVEY.

I, James D. Glasser,
Registered Land Surveyor,
N.D. No. 5771, do hereby
certify that the survey plat
shown hereon was made by
me, or under my direction,
and is true and correct to
the the best of my
knowledge and belief.

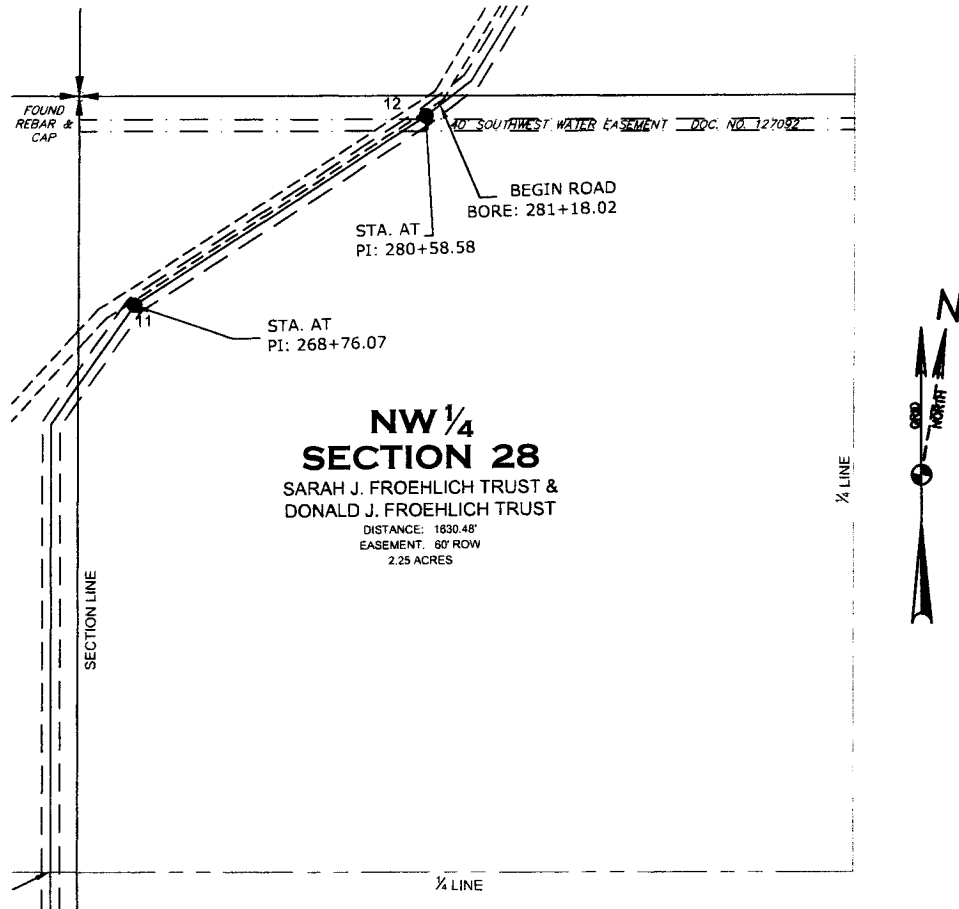
James D. Glasser, Registered Land Surveyor
N.D. R.L.S. No. 5771

DATE _____

HIGHLANDS ENGINEERING & SURVEYING, PLLC 253 24th Street East Dickinson, ND 58601 701.483.2444 office 701.483.2610 fax www.highlandseng.com	PROPOSED EASEMENT ON AND ACROSS THE NE 1/4, SEC. 29, T141N, R98W, 5th PRINCIPAL MERIDIAN BILLINGS COUNTY, NORTH DAKOTA		WHITING OIL & GAS CORPORATION 1700 BROADWAY, SUITE 2300 DENVER, CO 80290-2300
			DATE: SEPTEMBER 9, 2011 SHEET NUMBER: 10 OF 17 DRAWN BY: DVP PROJECT NO. 112317
			 Whiting Petroleum Corporation

BELFIELD OIL PIPELINE

NW 1/4, SECTION 28, TOWNSHIP 141 NORTH, RANGE 98 WEST
OF THE 5th PRINCIPAL MERIDIAN, BILLINGS COUNTY, NORTH DAKOTA
EXHIBIT "A"



NW 1/4 SECTION 28
SARAH J. FROELICH TRUST &
DONALD J. FROELICH TRUST
DISTANCE: 1830.48'
EASEMENT: 60' ROW
2.25 ACRES

NOTES:

1. Survey is based on North Dakota State Plane System, NAD83 (96), South Zone, U.S. Foot. Bearings shown are grid bearings, distances shown are grid distances. Combined scale factor = 1.0001822550 to go from grid distance to ground distance.
2. Sketches of easements depicted herein are based on information obtained while conducting the survey for easement acquisition and on deeds supplied by the client, and DO NOT CONSTITUTE THE RESULTS OF A FULL BOUNDARY SURVEY.

I, James D. Glasser,
Registered Land Surveyor,
N.D. No. 5771, do hereby
certify that the survey plat
shown hereon was made by
me, or under my direction,
and is true and correct to
the the best of my
knowledge and belief.

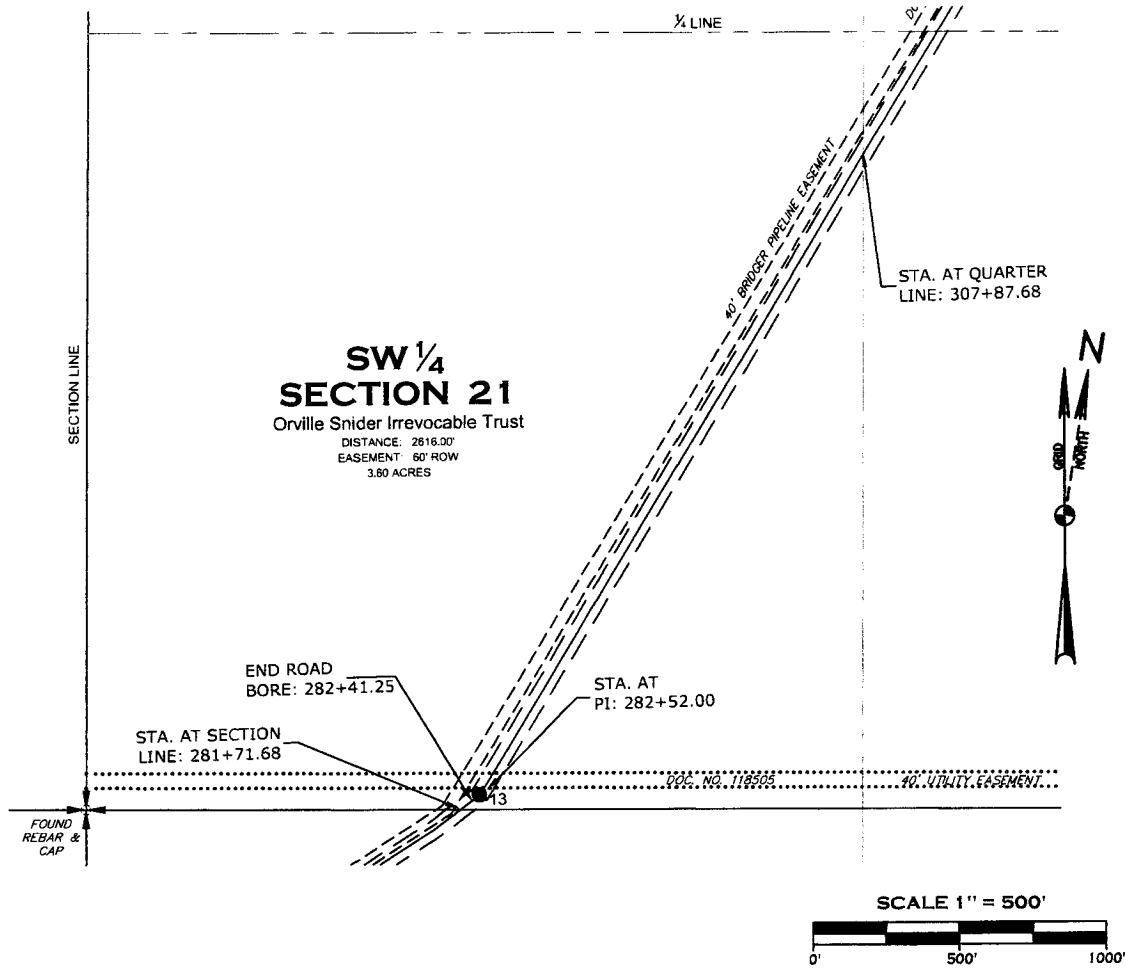
James D. Glasser, Registered Land Surveyor
N.D. R.L.S. No. 5771

DATE _____

HIGHLANDS ENGINEERING & SURVEYING, PLLC 253 24th Street East Dickinson, ND 58601 701.483.2444 office 701.483.2610 fax www.highlandseng.com	PROPOSED EASEMENT ON AND ACROSS THE NW 1/4, SEC. 28, T141N, R98W, 5th PRINCIPAL MERIDIAN BILLINGS COUNTY, NORTH DAKOTA	WHITING OIL & GAS CORPORATION 1700 BROADWAY, SUITE 2300 DENVER, CO 80290-2300
		DATE: SEPTEMBER 9, 2011 SHEET NUMBER: 11 OF 17 DRAWN BY: DVP PROJECT NO. 112317

BELFIELD OIL PIPELINE

SW 1/4, SECTION 21, TOWNSHIP 141 NORTH, RANGE 98 WEST
OF THE 5th PRINCIPAL MERIDIAN, BILLINGS COUNTY, NORTH DAKOTA
EXHIBIT "A"



NOTES:

1. Survey is based on North Dakota State Plane System, NAD83 (96), South Zone, U.S. Foot. Bearings shown are grid bearings, distances shown are grid distances. Combined scale factor = 1.0001822550 to go from grid distance to ground distance.
2. Sketches of easements depicted herein are based on information obtained while conducting the survey for easement acquisition and on deeds supplied by the client, and DO NOT CONSTITUTE THE RESULTS OF A FULL BOUNDARY SURVEY.

I, James D. Glasser,
Registered Land Surveyor,
N.D. No. 5771, do hereby
certify that the survey plot
shown hereon was made by
me, or under my direction,
and is true and correct to
the the best of my
knowledge and belief.

James D. Glasser, Registered Land Surveyor
N.D. R.L.S. No. 5771

DATE

**HIGHLANDS
ENGINEERING &
SURVEYING, PLLC**

253 24th Street East
Dickinson, ND 58601
701.483.2444 office
701.483.2610 fax
www.highlandseng.com

**HIGHLANDS
ENGINEERING & SURVEYING, PLLC**

PROPOSED EASEMENT ON AND ACROSS THE
SW 1/4, SEC. 21, T141N, R98W, 5th PRINCIPAL MERIDIAN
BILLINGS COUNTY, NORTH DAKOTA

DATE: SEPTEMBER 9, 2011
SHEET NUMBER: 12 OF 17
DRAWN BY: DVP
PROJECT NO. 112317

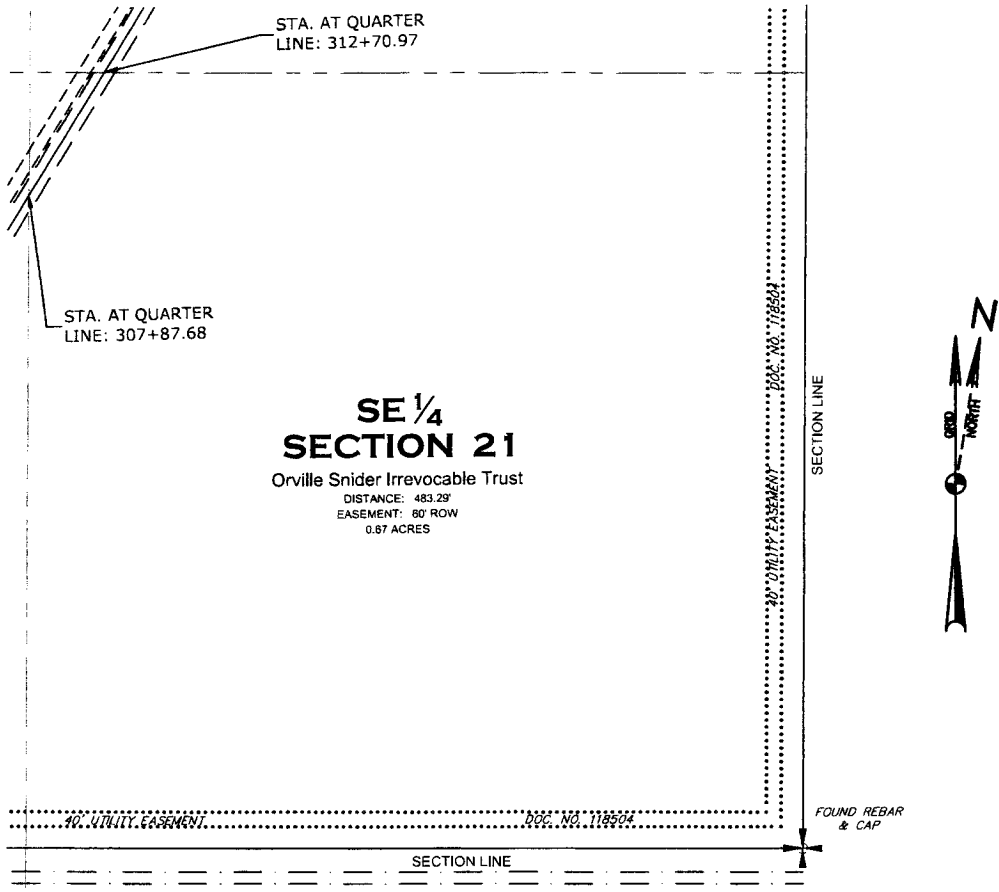
WHITING OIL & GAS CORPORATION
1700 BROADWAY, SUITE 2300
DENVER, CO 80290-2300



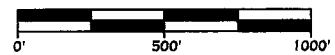
Whiting Petroleum Corporation

BELFIELD OIL PIPELINE

SE 1/4, SECTION 21, TOWNSHIP 141 NORTH, RANGE 98 WEST
OF THE 5th PRINCIPAL MERIDIAN, BILLINGS COUNTY, NORTH DAKOTA
EXHIBIT "A"



SCALE 1" = 500'



NOTES:

1. Survey is based on North Dakota State Plane System, NAD83 (96), South Zone, U.S. Foot. Bearings shown are grid bearings, distances shown are grid distances. Combined scale factor = 1.0001822550 to go from grid distance to ground distance.
2. Sketches of easements depicted herein are based on information obtained while conducting the survey for easement acquisition and on deeds supplied by the client, and DO NOT CONSTITUTE THE RESULTS OF A FULL BOUNDARY SURVEY.

I, James D. Glasser,
Registered Land Surveyor,
N.D. No. 5771, do hereby
certify that the survey plat
shown hereon was made by
me, or under my direction,
and is true and correct to
the the best of my
knowledge and belief.

James D. Glasser, Registered Land Surveyor
N.D. R.L.S. No. 5771

DATE

**HIGHLANDS
ENGINEERING &
SURVEYING, PLLC**

253 24th Street East
Dickinson, ND 58601
701.483.2444 office
701.483.2610 fax
www.highlandseng.com



PROPOSED EASEMENT ON AND ACROSS THE
SE 1/4, SEC. 21, T141N, R98W, 5th PRINCIPAL MERIDIAN
BILLINGS COUNTY, NORTH DAKOTA

DATE: SEPTEMBER 9, 2011

SHEET NUMBER: 13 OF 17

DRAWN BY: DVP

PROJECT NO. 112317

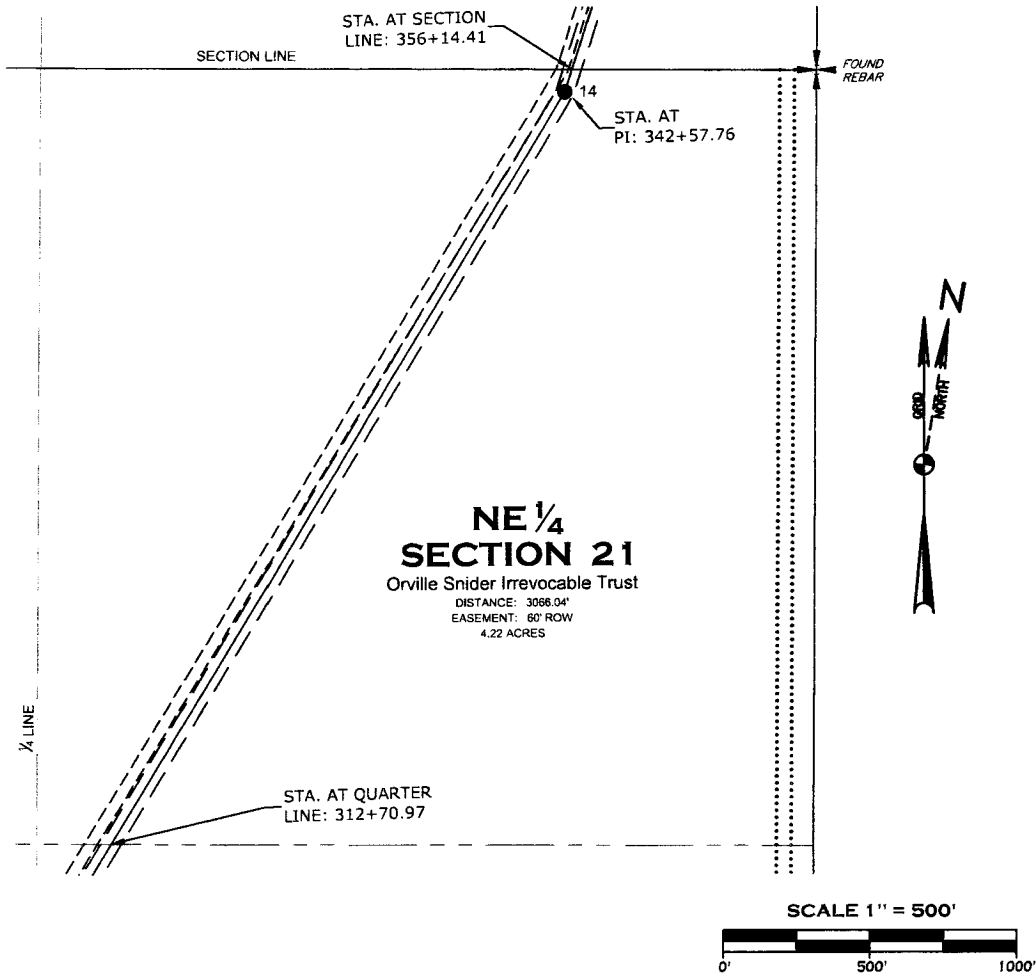
WHITING OIL & GAS CORPORATION
1700 BROADWAY, SUITE 2300
DENVER, CO 80290-2300



Whiting Petroleum Corporation

BELFIELD OIL PIPELINE

NE 1/4, SECTION 21, TOWNSHIP 141 NORTH, RANGE 98 WEST
OF THE 5th PRINCIPAL MERIDIAN, BILLINGS COUNTY, NORTH DAKOTA
EXHIBIT "A"



NOTES:

- Survey is based on North Dakota State Plane System, NAD83 (96), South Zone, U.S. Foot. Bearings shown are grid bearings, distances shown are grid distances. Combined scale factor = 1.0001822550 to go from grid distance to ground distance.
- Sketches of easements depicted herein are based on information obtained while conducting the survey for easement acquisition and on deeds supplied by the client, and DO NOT CONSTITUTE THE RESULTS OF A FULL BOUNDARY SURVEY.

I, James D. Glasser,
Registered Land Surveyor,
N.D. No. 5771, do hereby
certify that the survey plat
shown hereon was made by
me, or under my direction,
and is true and correct to
the the best of my
knowledge and belief.

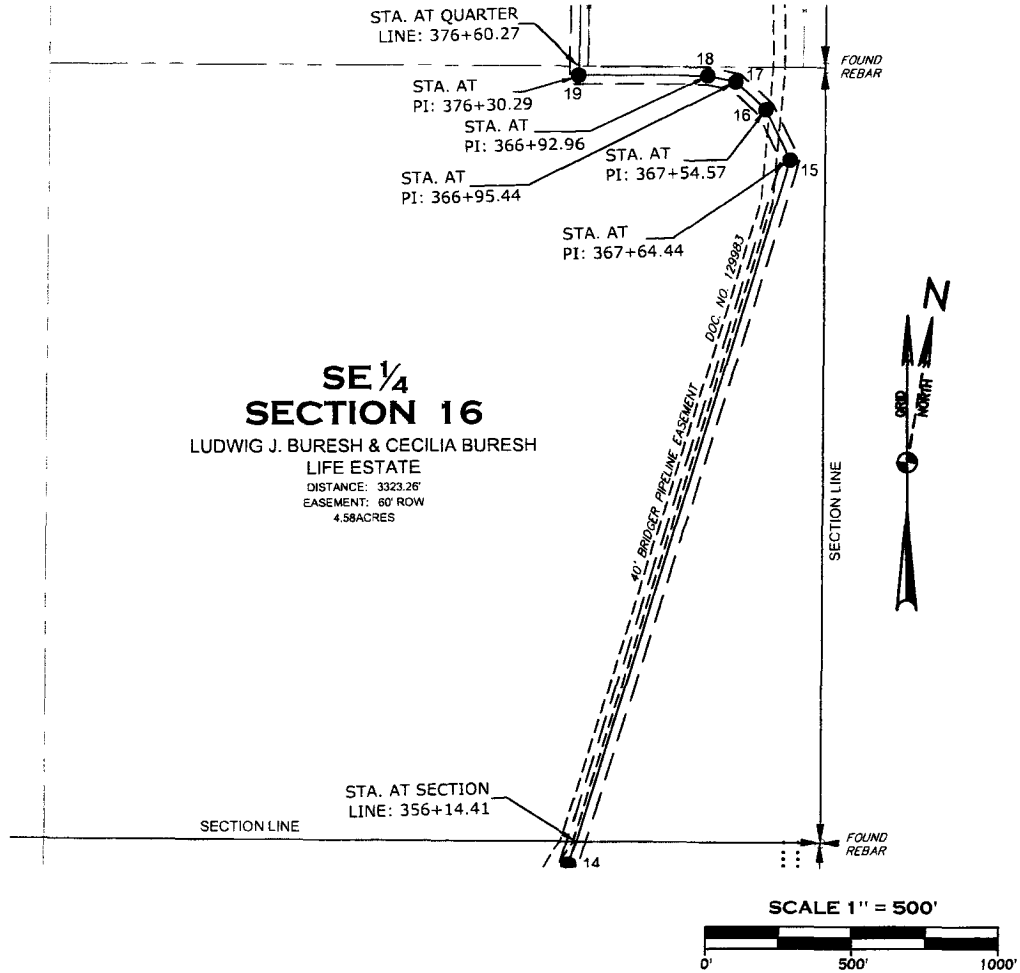
James D. Glasser, Registered Land Surveyor
N.D. R.L.S. No. 5771

DATE

HIGHLANDS ENGINEERING & SURVEYING, PLLC 253 24th Street East Dickinson, ND 58601 701.483.2444 office 701.483.2610 fax www.highlandseng.com	PROPOSED EASEMENT ON AND ACROSS THE NE 1/4, SEC. 21, T141N, R98W, 5th PRINCIPAL MERIDIAN BILLINGS COUNTY, NORTH DAKOTA		WHITING OIL & GAS CORPORATION 1700 BROADWAY, SUITE 2300 DENVER, CO 80290-2300
	DATE: SEPTEMBER 9, 2011 SHEET NUMBER: 14 OF 17 DRAWN BY: DVP PROJECT NO. 112317	Whiting Petroleum Corporation	

BELFIELD OIL PIPELINE

SE 1/4, SECTION 16, TOWNSHIP 141 NORTH, RANGE 98 WEST
OF THE 5th PRINCIPAL MERIDIAN, BILLINGS COUNTY, NORTH DAKOTA
EXHIBIT "A"



NOTES:

- Survey is based on North Dakota State Plane System, NAD83 (96), South Zone, U.S. Foot. Bearings shown are grid bearings, distances shown are grid distances. Combined scale factor = 1.0001822550 to go from grid distance to ground distance.
- Sketches of easements depicted herein are based on information obtained while conducting the survey for easement acquisition and on deeds supplied by the client, and DO NOT CONSTITUTE THE RESULTS OF A FULL BOUNDARY SURVEY.

I, James D. Glasser,
Registered Land Surveyor,
N.D. No. 5771, do hereby
certify that the survey plat
shown hereon was made by
me, or under my direction,
and is true and correct to
the the best of my
knowledge and belief.

James D. Glasser, Registered Land Surveyor
N.D. R.L.S. No. 5771

DATE _____

**HIGHLANDS
ENGINEERING &
SURVEYING, PLLC**
253 24th Street East
Dickinson, ND 58601
701.483.2444 office
701.483.2610 fax
www.highlandseng.com

PROPOSED EASEMENT ON AND ACROSS THE
SE 1/4, SEC. 16, T141N, R98W, 5th PRINCIPAL MERIDIAN
BILLINGS COUNTY, NORTH DAKOTA

WHITING OIL & GAS CORPORATION
1700 BROADWAY, SUITE 2300
DENVER, CO 80290-2300

**HIGHLANDS
ENGINEERING & SURVEYING, PLLC**

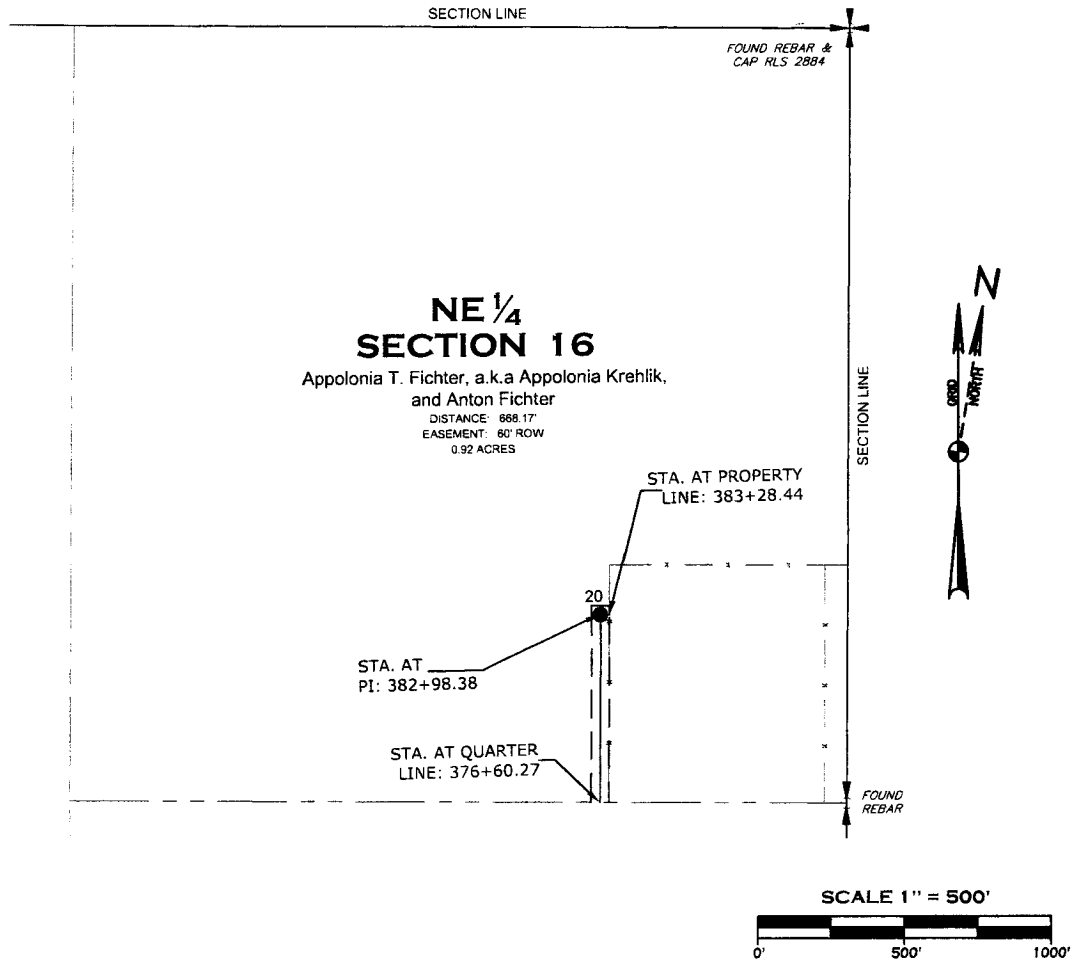
DATE: SEPTEMBER 9, 2011
SHEET NUMBER: 15 OF 17
DRAWN BY: DVP
PROJECT NO. 112317



Whiting Petroleum Corporation

BELFIELD OIL PIPELINE

NE 1/4, SECTION 16, TOWNSHIP 141 NORTH, RANGE 98 WEST
OF THE 5th PRINCIPAL MERIDIAN, BILLINGS COUNTY, NORTH DAKOTA
EXHIBIT "A"



NOTES:

- Survey is based on North Dakota State Plane System, NAD83 (96), South Zone, U.S. Foot. Bearings shown are grid bearings, distances shown are grid distances. Combined scale factor = 1.0001822550 to go from grid distance to ground distance.
- Sketches of easements depicted herein are based on information obtained while conducting the survey for easement acquisition and on deeds supplied by the client, and DO NOT CONSTITUTE THE RESULTS OF A FULL BOUNDARY SURVEY.

I, James D. Glasser,
Registered Land Surveyor,
N.D. No. 5771, do hereby
certify that the survey plat
shown hereon was made by
me, or under my direction,
and is true and correct to
the the best of my
knowledge and belief.

James D. Glasser, Registered Land Surveyor
N.D. R.L.S. No. 5771

DATE _____

**HIGHLANDS
ENGINEERING &
SURVEYING, PLLC**
253 24th Street East
Dickinson, ND 58601
701.483.2444 office
701.483.2610 fax
www.highlandseng.com

PROPOSED EASEMENT ON AND ACROSS THE
NE 1/4, SEC. 16, T141N, R98W, 5th PRINCIPAL MERIDIAN
BILLINGS COUNTY, NORTH DAKOTA

WHITING OIL & GAS CORPORATION
1700 BROADWAY, SUITE 2300
DENVER, CO 80290-2300

HIGHLANDS
ENGINEERING & SURVEYING, PLLC

DATE: SEPTEMBER 9, 2011
SHEET NUMBER: 16 OF 17
DRAWN BY: DVP
PROJECT NO. 112317



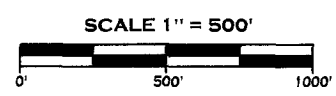
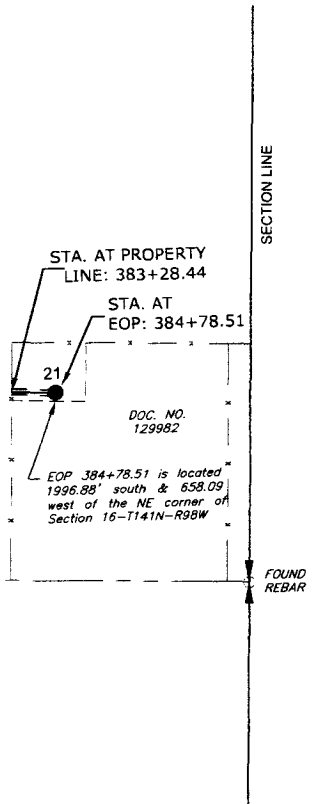
Whiting Petroleum Corporation

BELFIELD OIL PIPELINE

A TRACT LOCATED IN THE NE 1/4, SECTION 16, TOWNSHIP 141 NORTH, RANGE 98 WEST
OF THE 5th PRINCIPAL MERIDIAN, BILLINGS COUNTY, NORTH DAKOTA
EXHIBIT "A"

**15 ACRES IN
THE NE 1/4
SECTION 16**

Bridger Pipeline LLC
DISTANCE: 150.13'
EASEMENT: 20' ROW
0.07 ACRES



NOTES:

1. Survey is based on North Dakota State Plane System, NAD83 (96), South Zone, U.S. Foot. Bearings shown are grid bearings, distances shown are grid distances. Combined scale factor = 1.0001822550 to go from grid distance to ground distance.
2. Sketches of easements depicted herein are based on information obtained while conducting the survey for easement acquisition and on deeds supplied by the client, and DO NOT CONSTITUTE THE RESULTS OF A FULL BOUNDARY SURVEY.

I, James D. Glasser,
Registered Land Surveyor,
N.D. No. 5771, do hereby
certify that the survey plat
shown hereon was made by
me, or under my direction,
and is true and correct to
the the best of my
knowledge and belief.

James D. Glasser, Registered Land Surveyor
N.D. R.L.S. No. 5771

DATE _____

<p>HIGHLANDS ENGINEERING & SURVEYING, PLLC 253 24th Street East Dickinson, ND 58601 701.483.2444 office 701.483.2610 fax www.highlandseng.com</p>	<p>PROPOSED EASEMENT ON AND ACROSS THE A TRACT LOCATED IN THE NE 1/4, SEC. 16, T141N, R98W, 5th PRINCIPAL MERIDIAN BILLINGS COUNTY, NORTH DAKOTA</p>	<p>WHITING OIL & GAS CORPORATION 1700 BROADWAY, SUITE 2300 DENVER, CO 80290-2300</p>	
		<p>DATE: SEPTEMBER 9, 2011 SHEET NUMBER: 17 OF 17 DRAWN BY: DVP PROJECT NO. 112317</p>	
			<p>Whiting Petroleum Corporation</p>