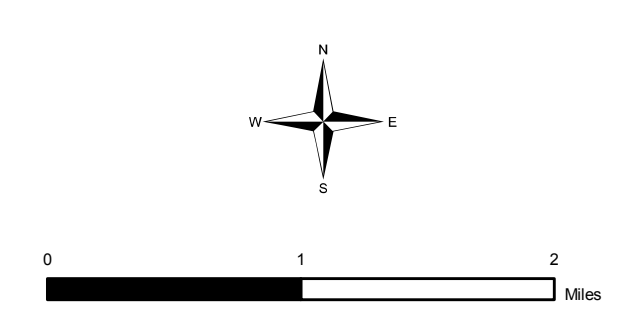


Expanded study corridor
to address local flooding

KC HARVEY ENVIRONMENTAL, LLC
 376 Gallatin Park Drive
 Bozeman, MT 59715
 (406) 585-7402
 www.kcharvey.com

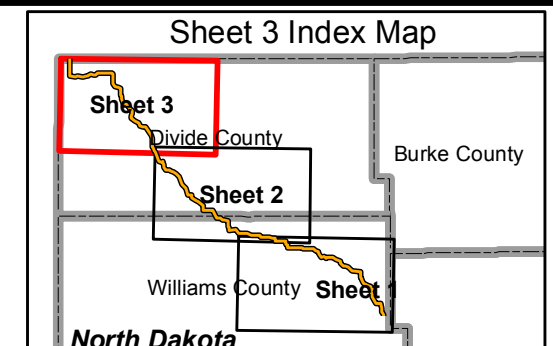


- Pipeline with 500ft Survey Corridor
- Wetland Crossing
- Hess Gathering System

- Secondary Road
- Abandoned Railroad
- Active Railroad
- PLOTS

- North Dakota Game and Fish
- North Dakota Land Department
- US Bureau of Land Management
- Piping Plover Critical Habitat

- Water Fowl Production Area
- National Wildlife Refuge
- Lake Sakakawea Subbasin
- Little Muddy Subbasin

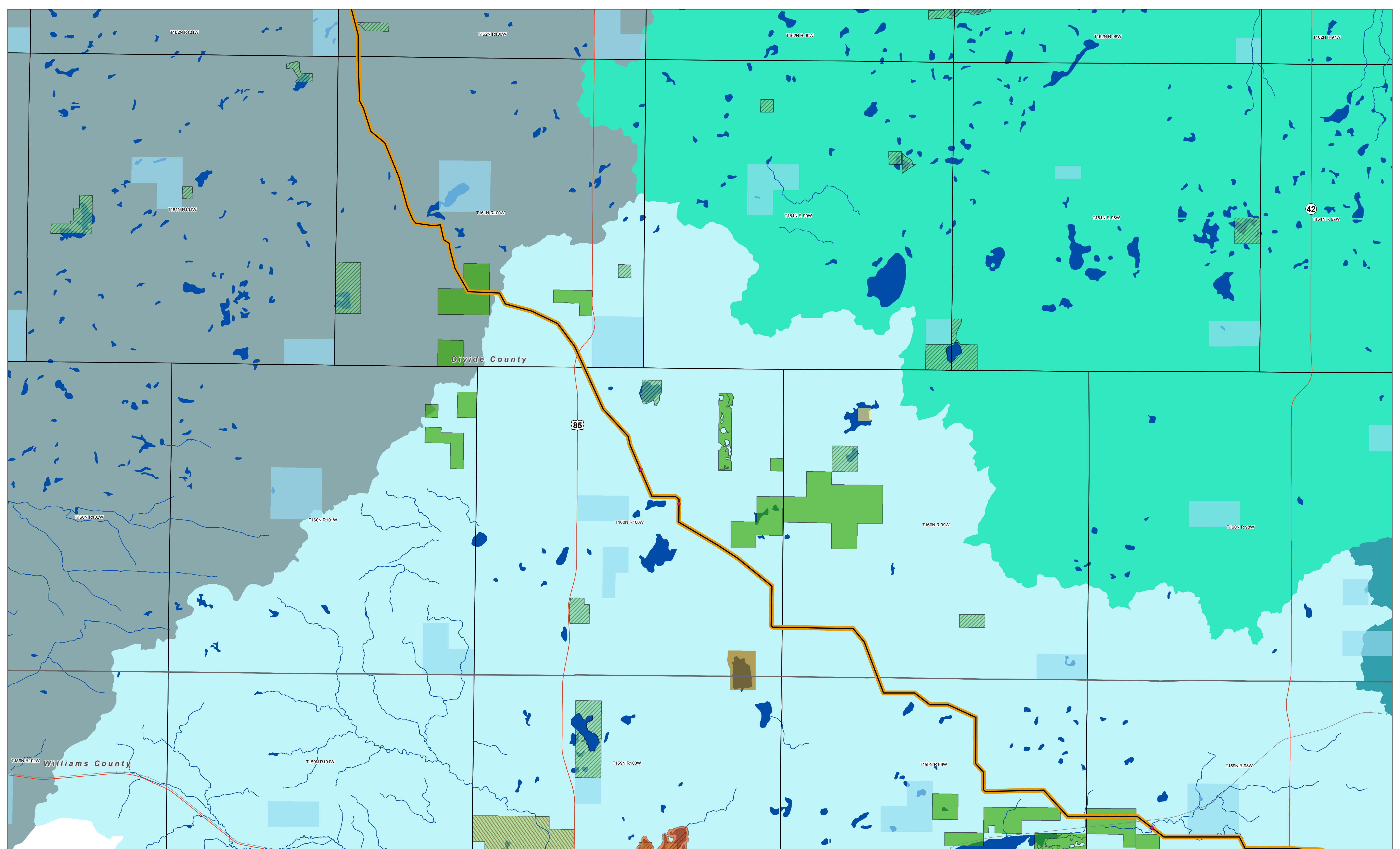


VANTAGE PIPELINE

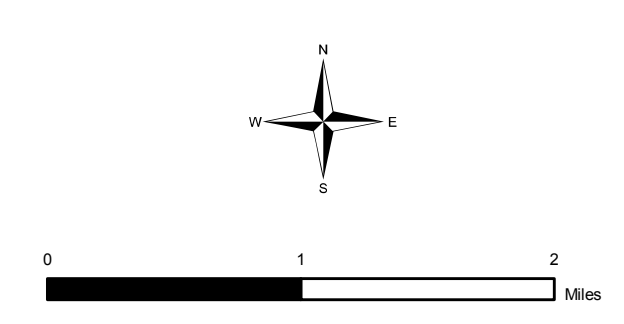
Pipeline Alignment and Selection Criteria
 Divide and Williams Counties, North Dakota

Sheet 1
 1:48,000

Date: January 2012 Version: 1



KC HARVEY ENVIRONMENTAL, LLC
 376 Gallatin Park Drive
 Bozeman, MT 59715
 (406) 585-7402
 www.kcharvey.com



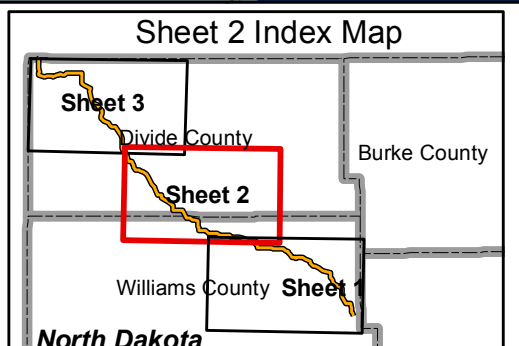
- Pipeline with 500ft Survey Corridor
- Wetland Crossing

- Secondary Road
- Abandoned Railroad
- Active Railroad

- PLOTS
- North Dakota Game and Fish
- North Dakota Land Department
- US Bureau of Land Management

- Piping Plover Critical Habitat
- Water Fowl Production Area
- National Wildlife Refuge

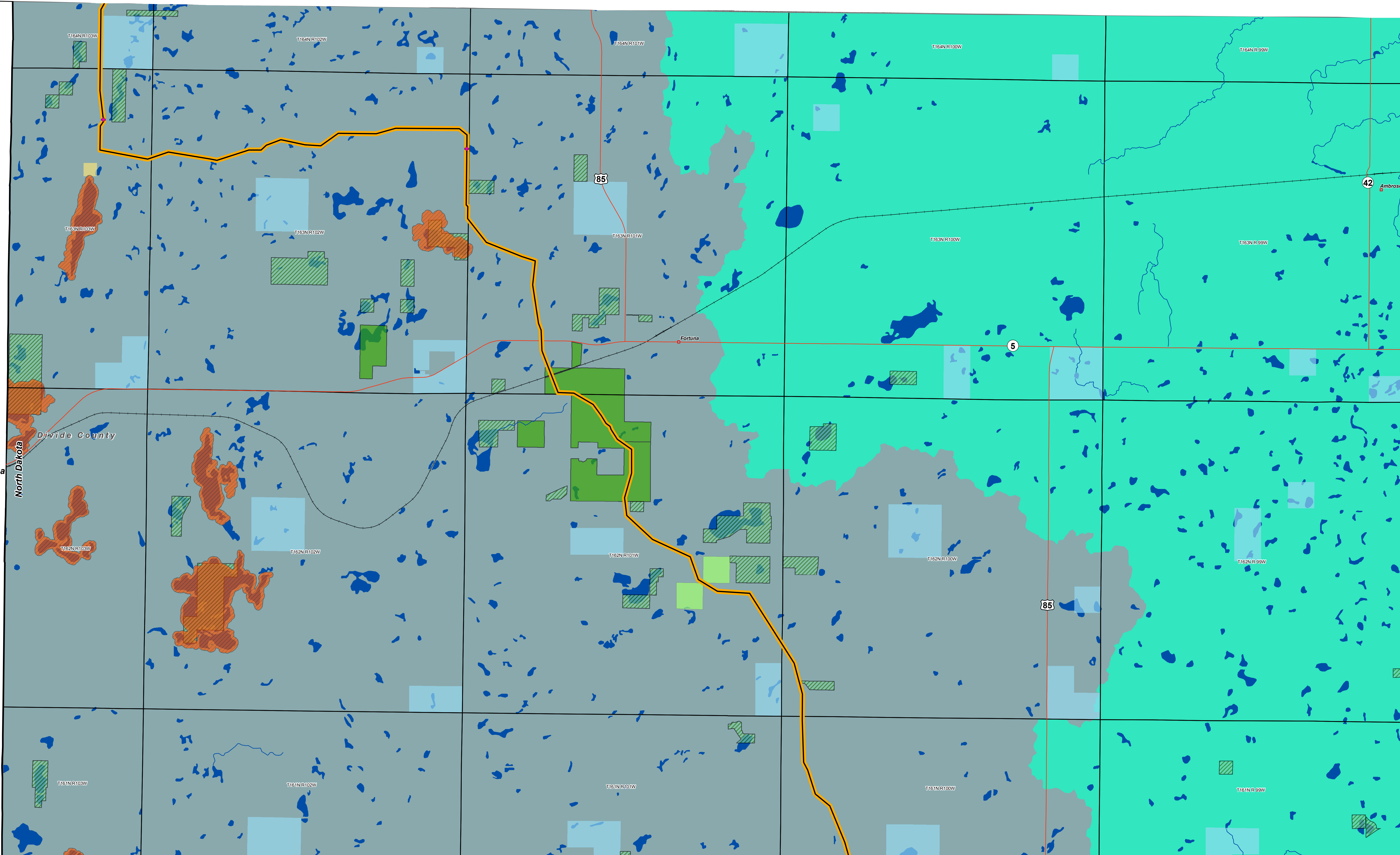
- Brush Lake Closed Basin
- Lake Sakakawea Subbasin
- Little Muddy Subbasin
- Upper Souris Subbasin

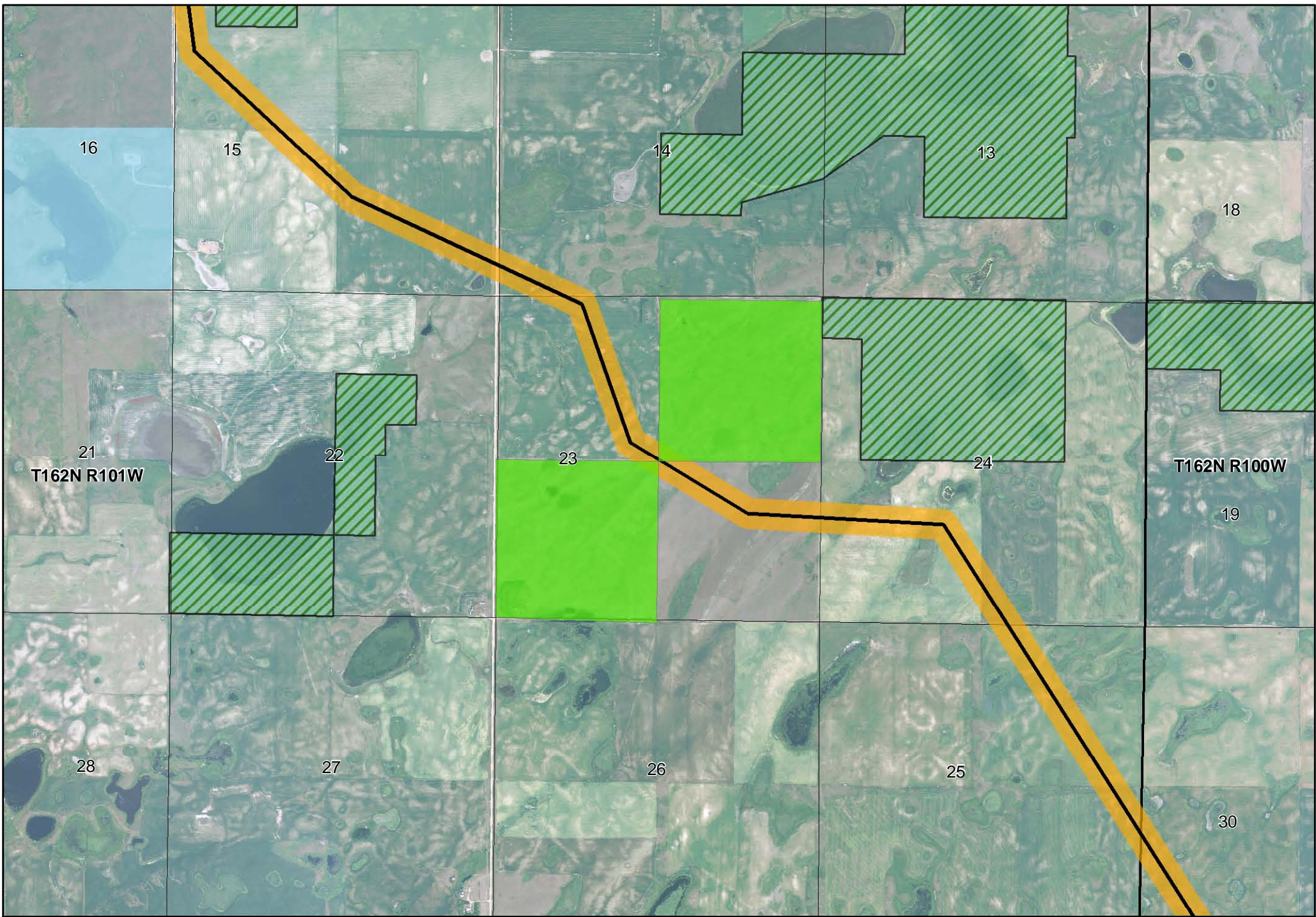


VANTAGE PIPELINE

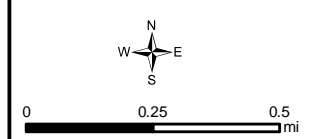
Pipeline Alignment and Selection Criteria
 Divide and Williams Counties, North Dakota
 Sheet 2
 1:48,000

Date: January 2011 Version: 1

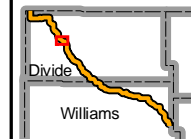




KC HARVEY ENVIRONMENTAL, LLC
 376 Gallatin Park Drive
 Bozeman, Montana 59715
 Phone: 406-585-7402
 Fax: 406-585-7428



- Pipeline
- 500ft Survey Corridor
- Grassland Easement
- Waterfowl Production Area
- National Wildlife Refuge
- North Dakota Game and Fish
- North Dakota Land Department
- US Bureau of Land Management



Mistral Energy Inc., Vantage Pipeline Project
 Pipeline Alignment and Selection Criteria
 Grassland Easement Crossing
 1:12,000
 Date: January 2012 Version: 1

