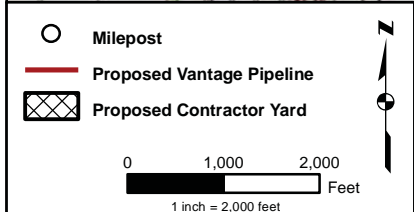
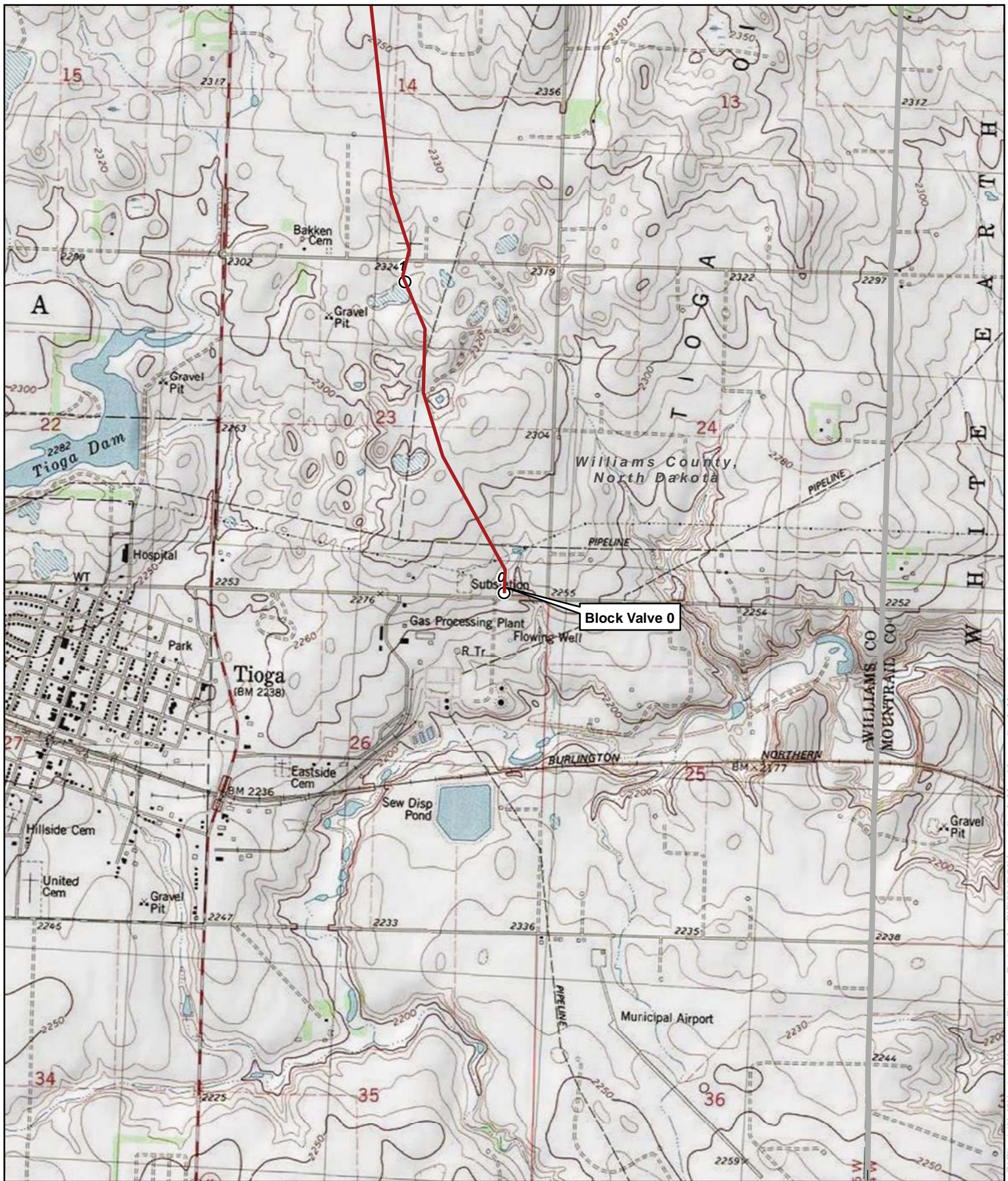
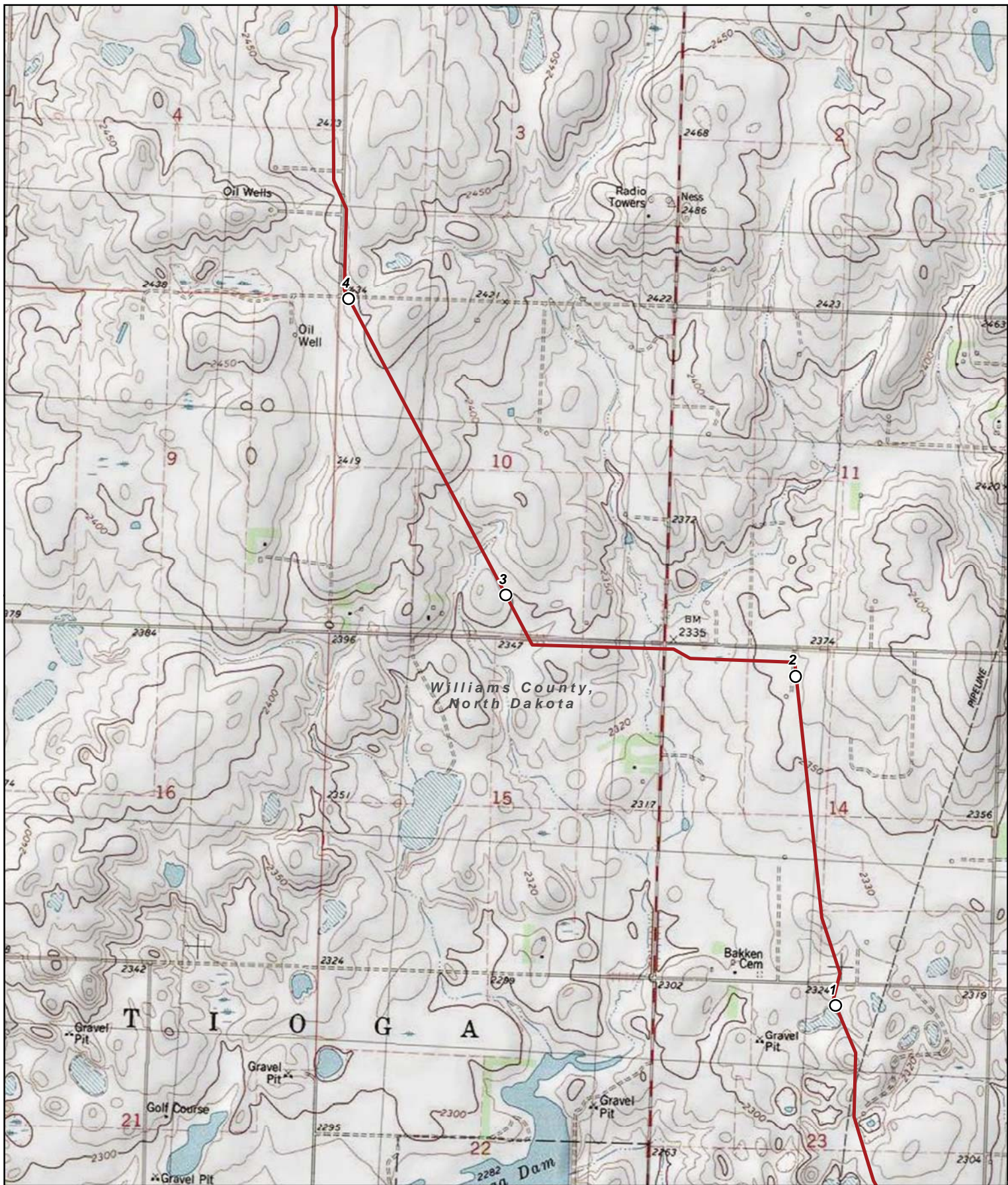


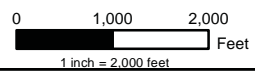
APPENDIX A
FACILITY LOCATION MAPS



Appendix A
Vantage Pipeline Project
 Williams County
 North Dakota



- Milepost
- Proposed Vantage Pipeline
- ▣ Proposed Contractor Yard

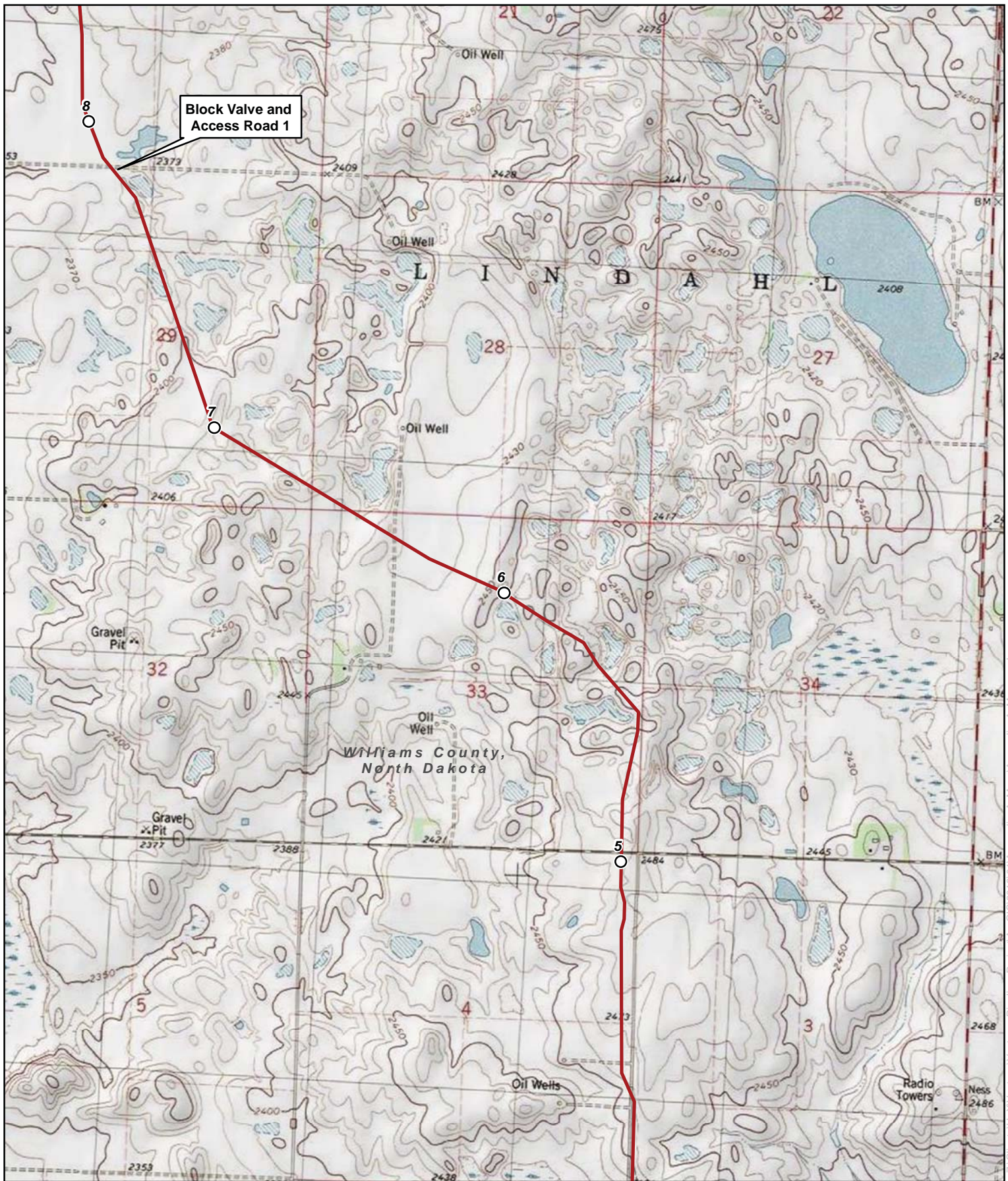


Appendix A

Vantage Pipeline Project

Williams County North Dakota

Date: (1/26/2012) Source: Z:\Clients\U_X\Wmagne\Wmagne_Pipeline_Project\ArcGIS\2012\U\Appendix_A_Maps\Appendix_A_Maps.mxd



Block Valve and
Access Road 1

Williams County,
North Dakota

- Milepost
- Proposed Vantage Pipeline
- ▣ Proposed Contractor Yard

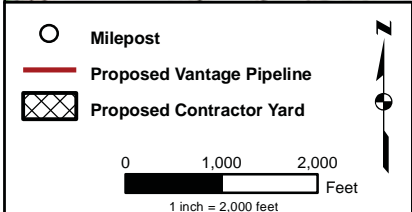
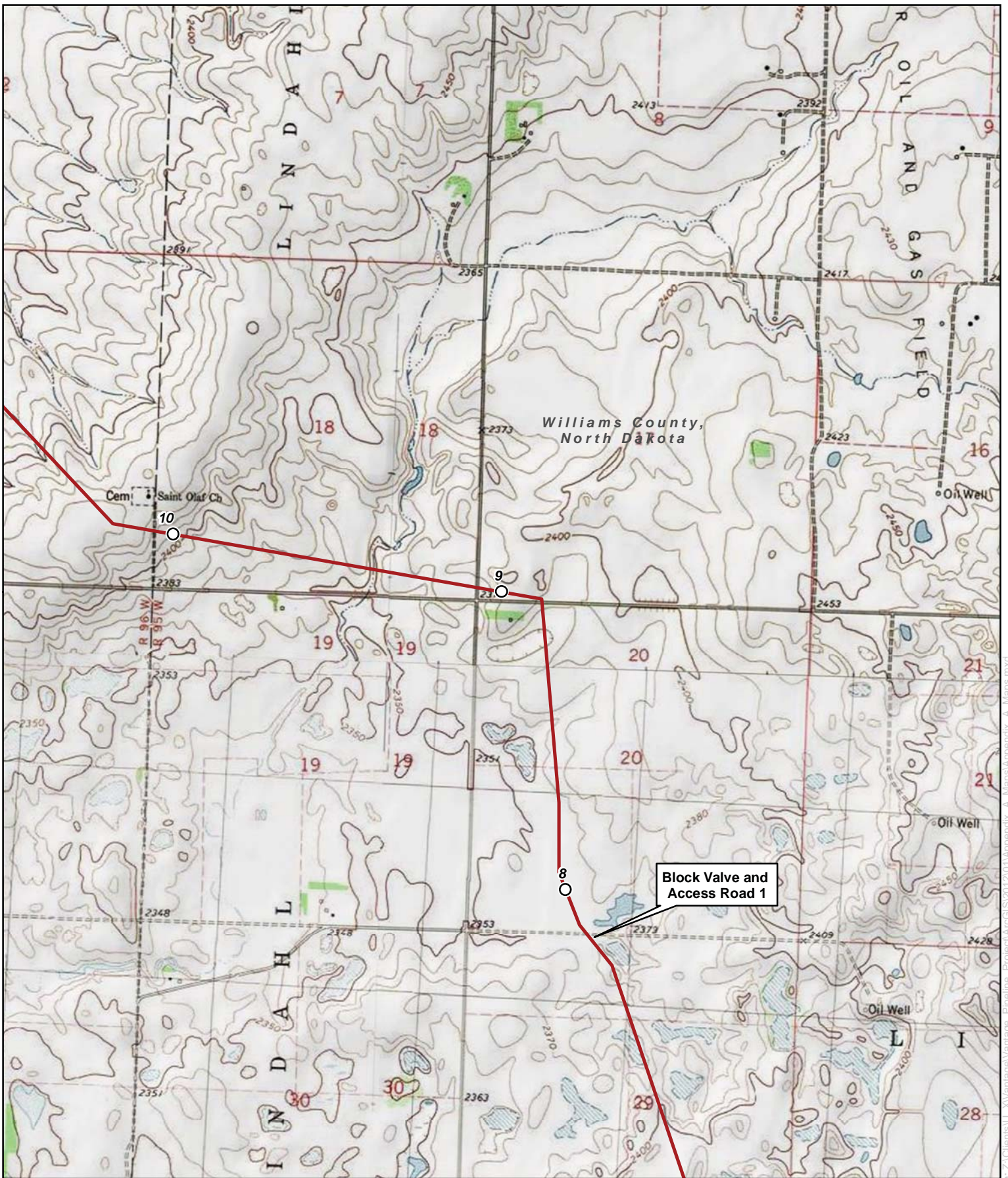
0 1,000 2,000
Feet
1 inch = 2,000 feet

Appendix A

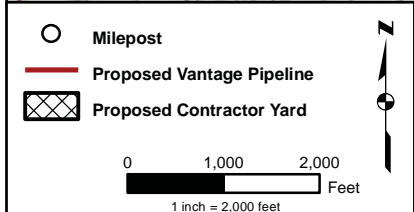
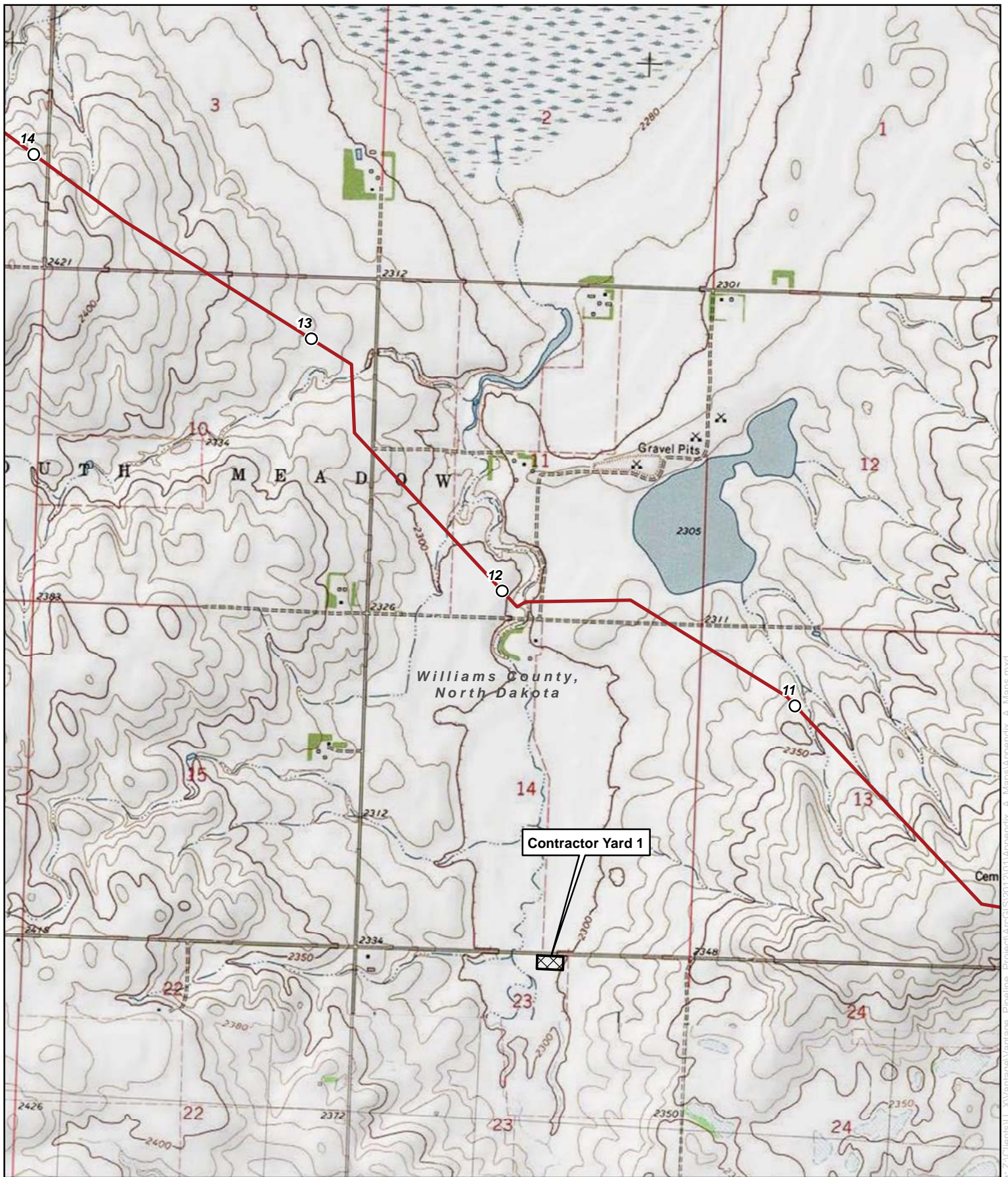
Vantage Pipeline Project

Williams County North Dakota

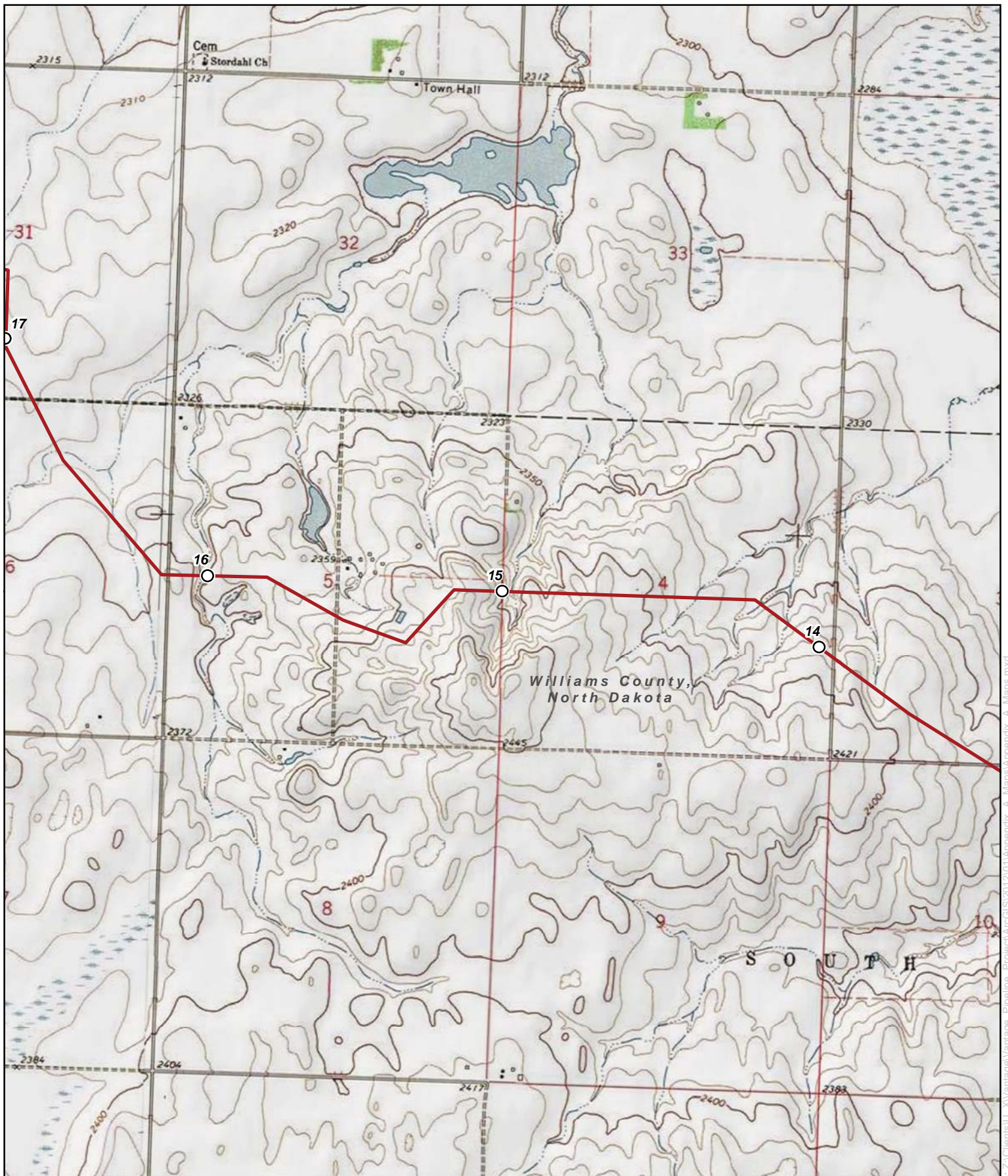
Date: (1/26/2012) Source: Z:\Clients\U_XV\Vantage\Vantage_Pipeline_Project\ArcGIS\2012\0_VAppendix_A_Maps\Appendix_A_Maps.mxd



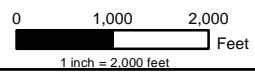
Appendix A
Vantage Pipeline Project
 Williams County
 North Dakota



Appendix A
Vantage Pipeline Project
 Williams County
 North Dakota



- Milepost
- Proposed Vantage Pipeline
- ▨ Proposed Contractor Yard

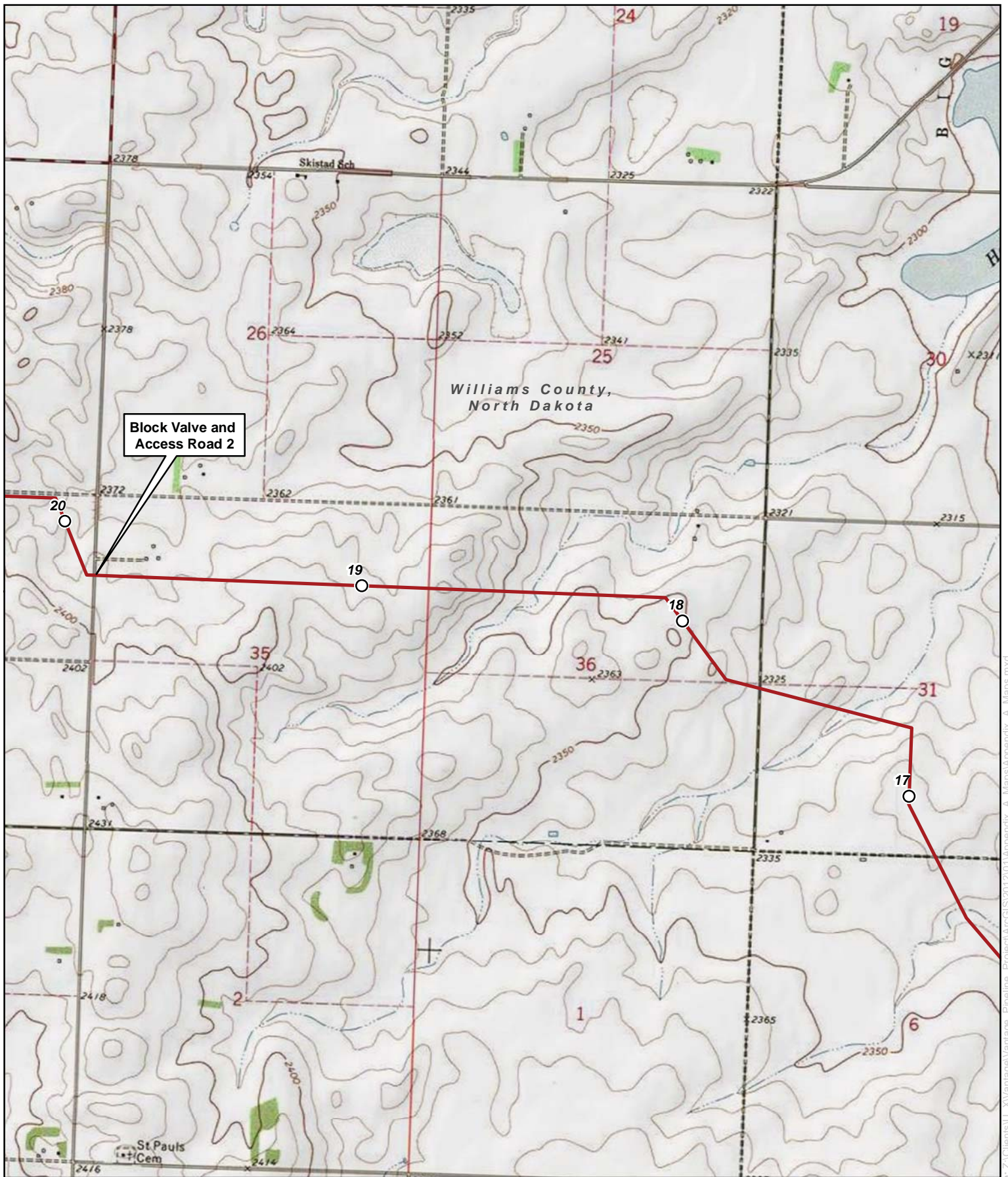


Appendix A

Vantage Pipeline Project

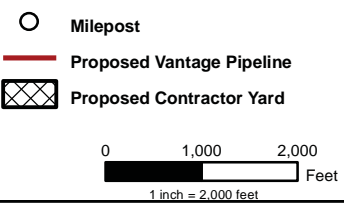
Williams County
North Dakota

Date: (1/26/2012) Source: Z:\Clients\U_X\Vantage\Vantage_Pipeline_Project\ArcGIS2012\0_V\Appendix_A_Maps\Appendix_A_Maps.mxd



Block Valve and
Access Road 2

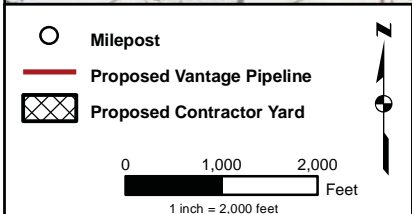
Williams County,
North Dakota



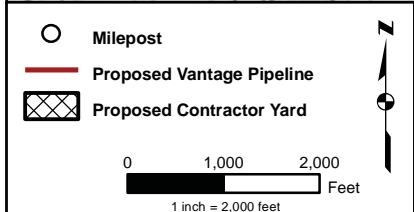
Appendix A

Vantage Pipeline Project

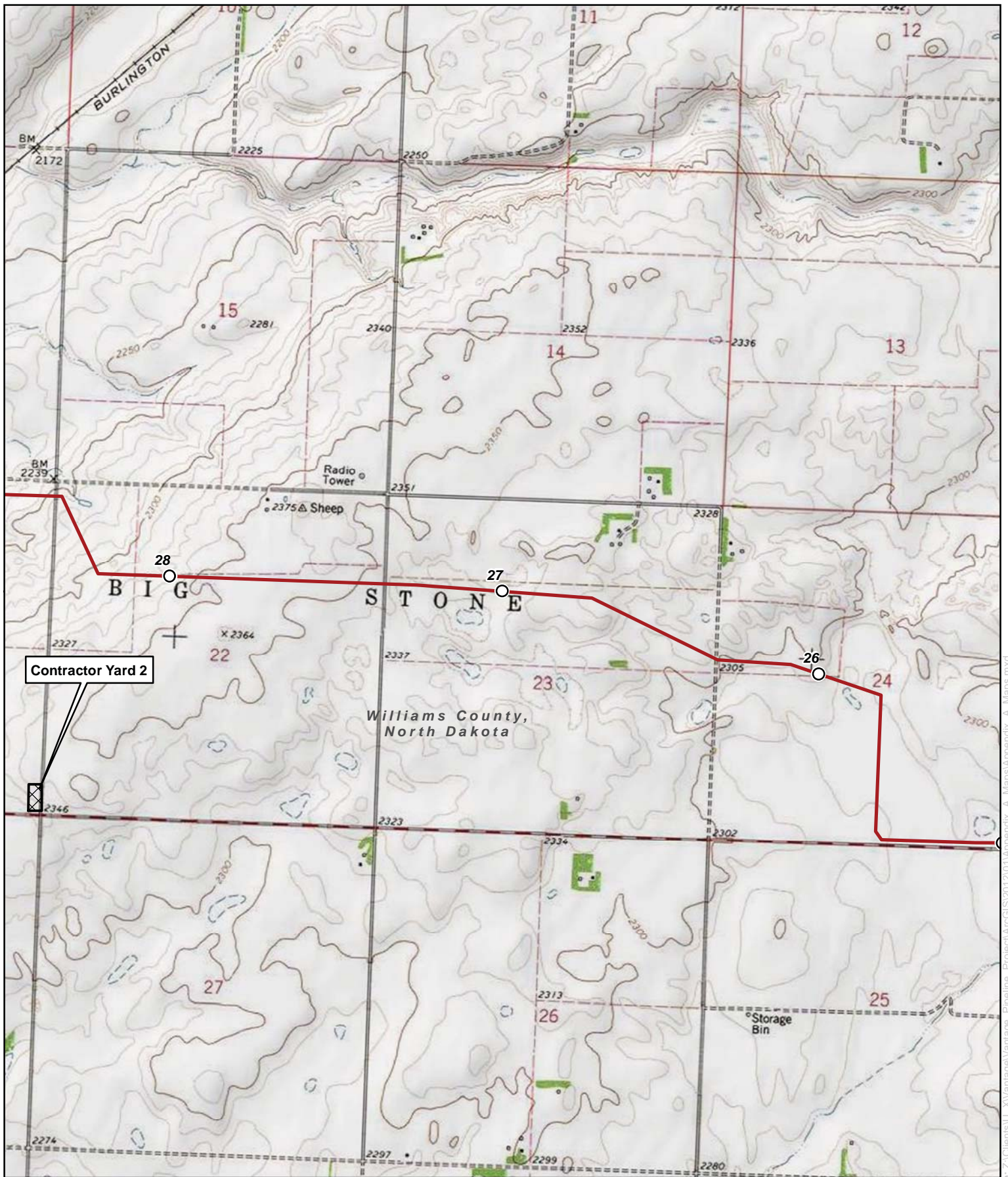
Williams County
North Dakota



Appendix A
Vantage Pipeline Project
 Williams County
 North Dakota

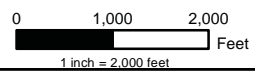


Appendix A
Vantage Pipeline Project
 Williams County
 North Dakota



Contractor Yard 2

- Milepost
- Proposed Vantage Pipeline
- ⊠ Proposed Contractor Yard

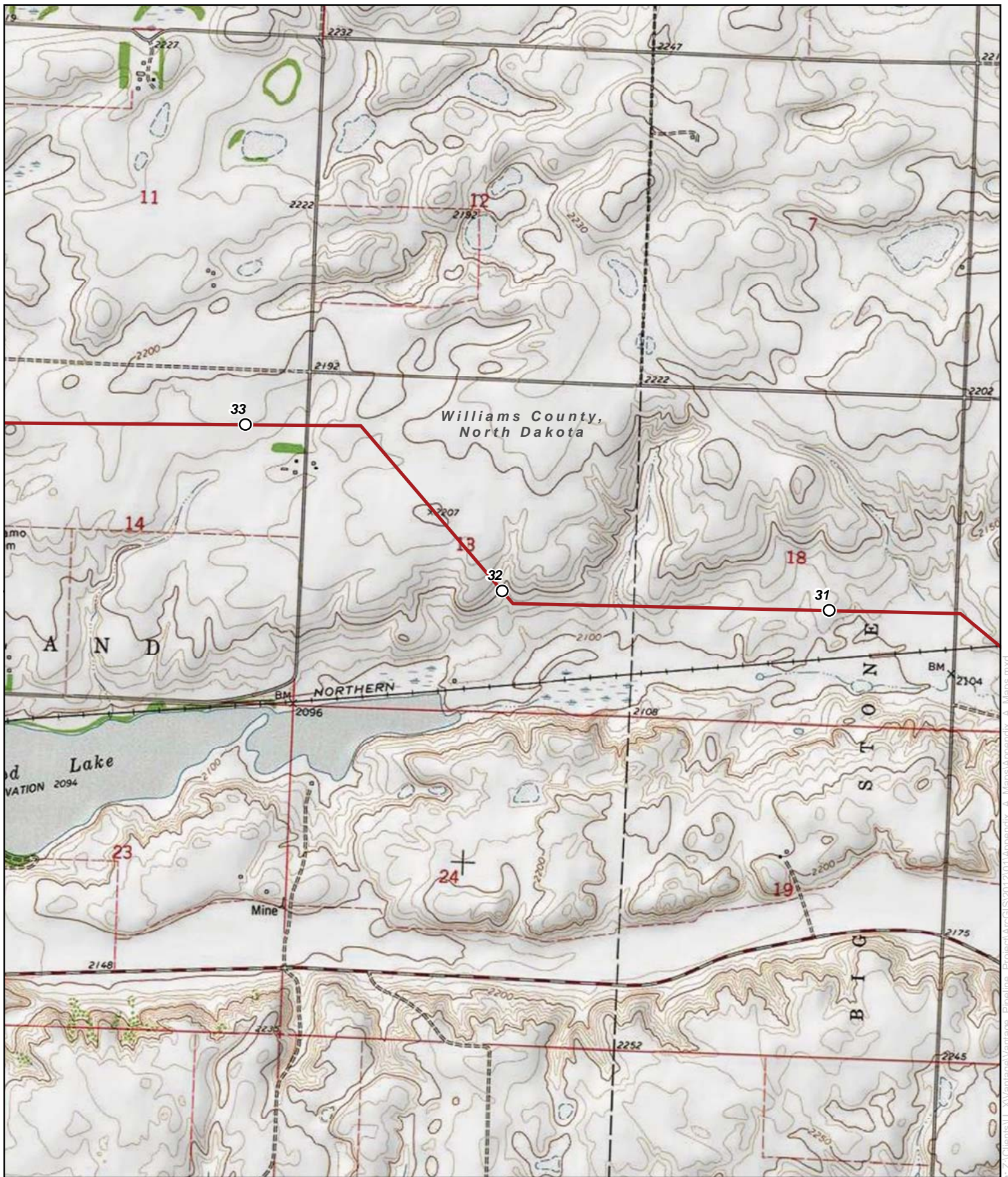


Appendix A

Vantage Pipeline Project

Williams County
North Dakota

Source: Z:\Clients\U_XV\amtag\amtag_Vantage_Pipeline_Project\ArcGIS\2012\10\Appendix_A_Maps\Appendix_A_Maps.mxd



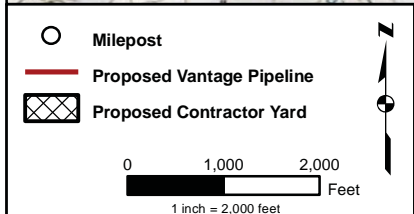
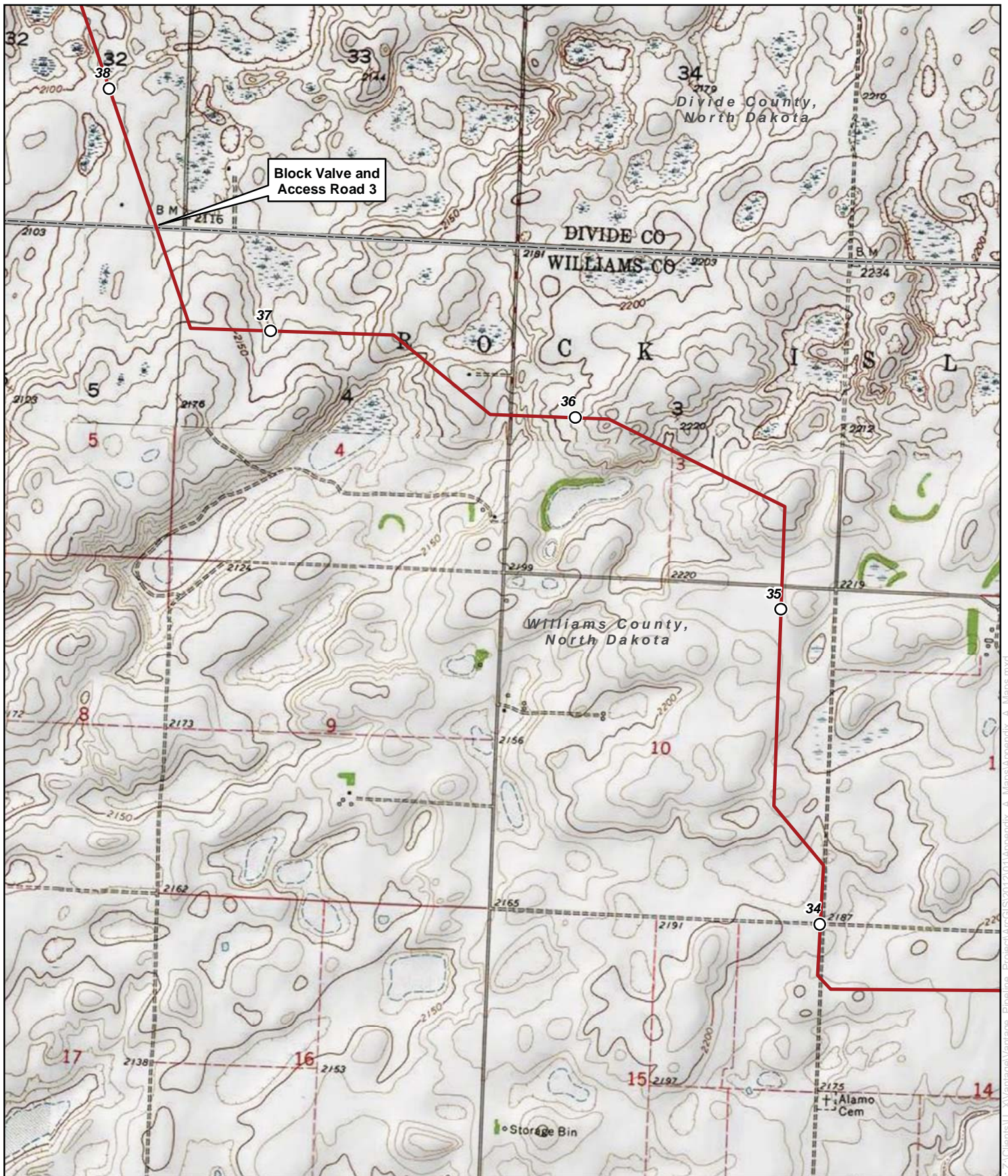
○ Milepost
 — Proposed Vantage Pipeline
 ▣ Proposed Contractor Yard

0 1,000 2,000
 Feet
 1 inch = 2,000 feet

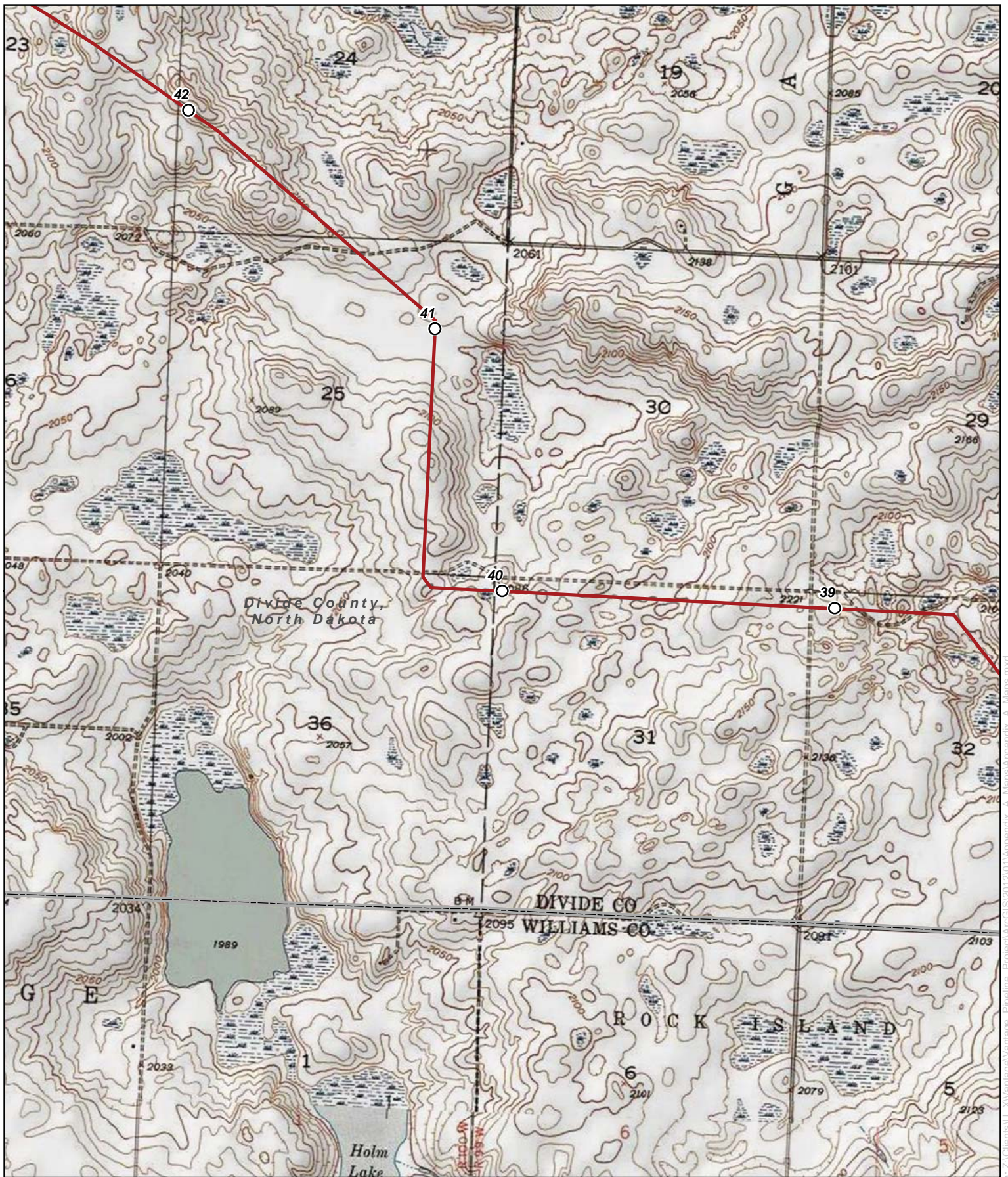
↑ N
 ↓ S

Appendix A
Vantage Pipeline Project
 Williams County
 North Dakota

Source: Z:\Clients\U_XV\MapInfo\MapInfo_Vantage_Pipeline_Project\ArcGIS\2012\10\Appendix_A_Maps\Appendix_A_Maps.mxd
 Date: 1/26/2012



Appendix A
Vantage Pipeline Project
 Williams and Divide Counties
 North Dakota



○ Milepost
 — Proposed Vantage Pipeline
 ▨ Proposed Contractor Yard

0 1,000 2,000
 Feet
 1 inch = 2,000 feet

↑ N
 ↓ S

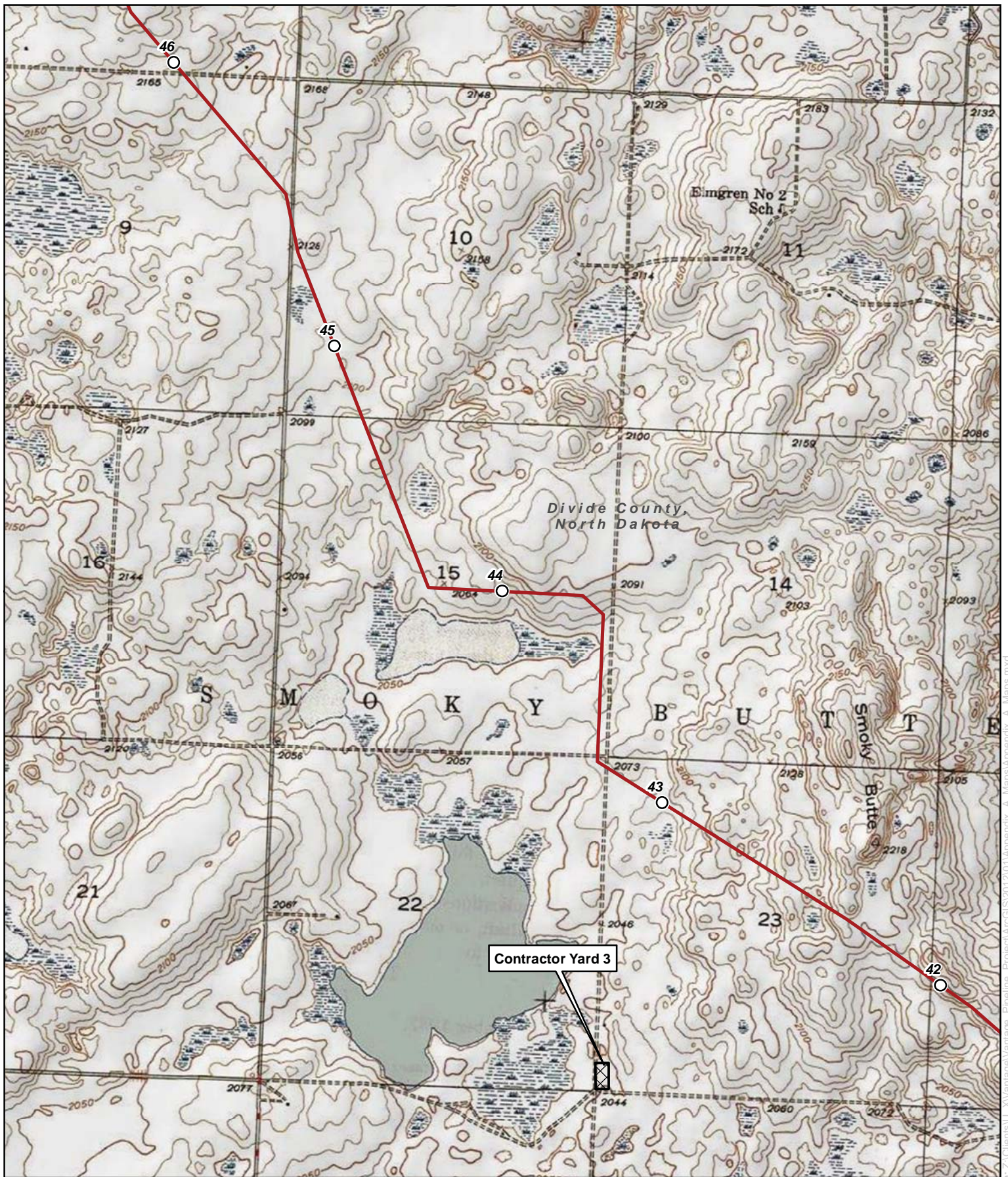
Appendix A

Vantage Pipeline Project

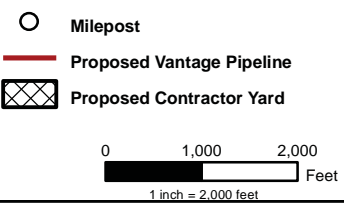
Williams and Divide Counties

North Dakota

Source: Z:\Clients\U...Vantage\Mapage_Pipeline_Project\ArcGIS\2012\10\Appendix_A_1\maps\Appendix_A_1.mxd



Contractor Yard 3

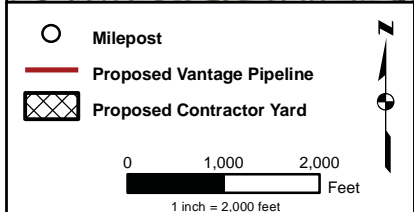


Appendix A

Vantage Pipeline Project

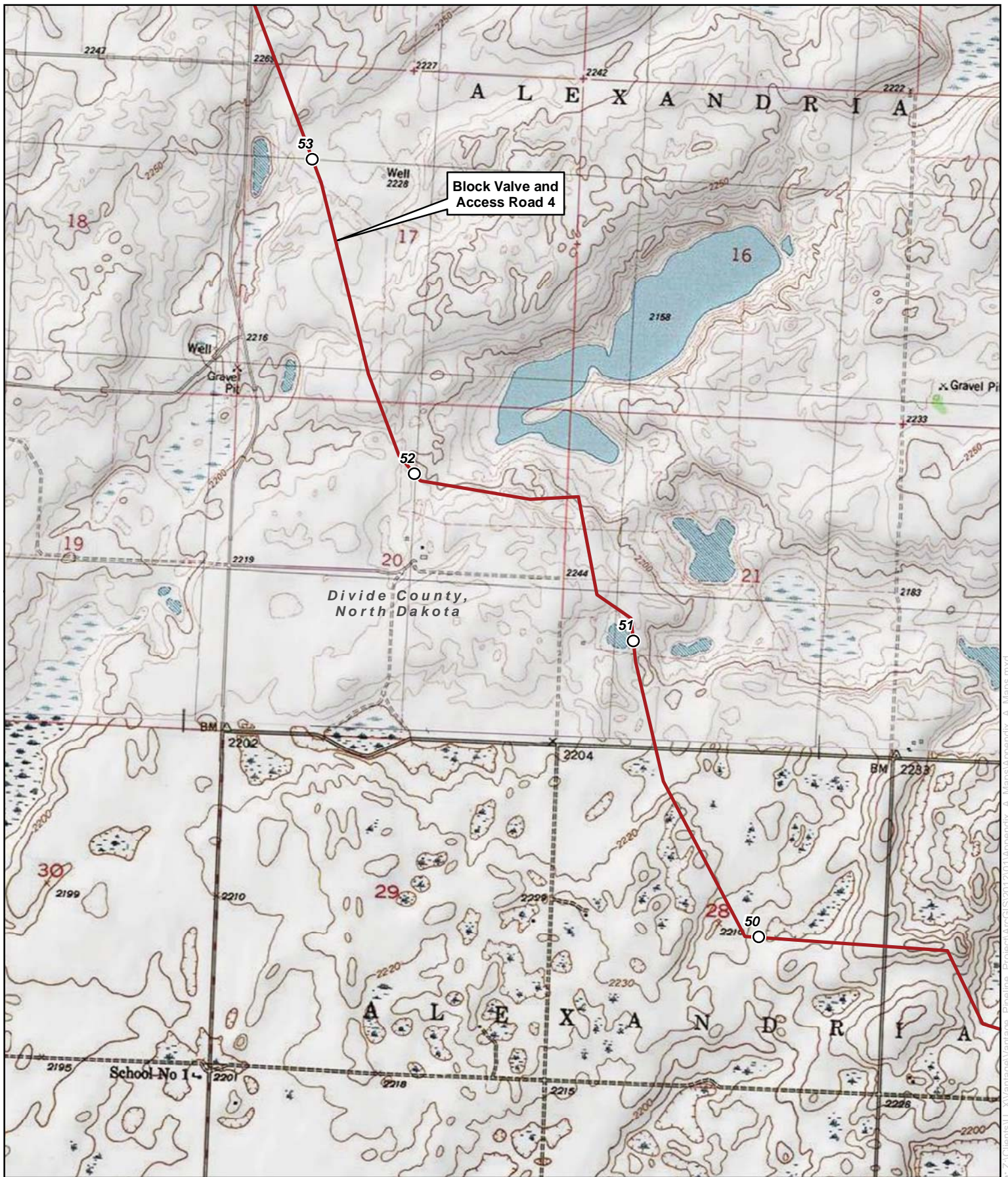
Divide County
North Dakota

Source: Z:\Clients\U_XV\amag\amag_V_Pipeline_Project\ArcGIS\2012\10\Appendix_A_Images\Appendix_A_maps.mxd Date: 1/26/2012



Appendix A
Vantage Pipeline Project
 Divide County
 North Dakota

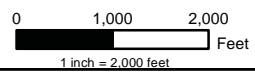
Date: (1/26/2012) Source: Z:\Clients\DU_XV\Images\Vantage_Pipeline_Project\ArcGIS\2012\10\Appendix_A_Images\Appendix_A_Images.mxd



Block Valve and Access Road 4

Divide County,
North Dakota

- Milepost
- Proposed Vantage Pipeline
- ▣ Proposed Contractor Yard



Appendix A

Vantage Pipeline Project

Divide County
North Dakota

Source: Z:\Clients\U_XV\amag\amag_Vantage_Pipeline_Project\ArcGIS\2012\10\14\Appendix_A_Maps\Appendix_A_Maps.mxd

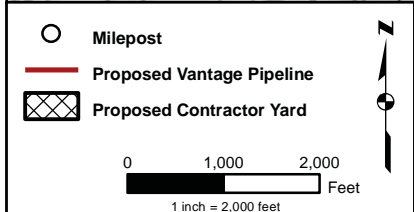


Appendix A
Vantage Pipeline Project
 Divide County
 North Dakota

○ Milepost
 — Proposed Vantage Pipeline
 ▨ Proposed Contractor Yard

0 1,000 2,000
 Feet
 1 inch = 2,000 feet

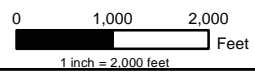
Source: z:\Clients\U_X\Vantage\Vantage_Pipeline_Project\ArcGIS\2012\10\Appendix_A_Maps\Appendix_A_Maps.mxd



Appendix A
Vantage Pipeline Project
 Divide County
 North Dakota



- Milepost
- Proposed Vantage Pipeline
- ⊠ Proposed Contractor Yard

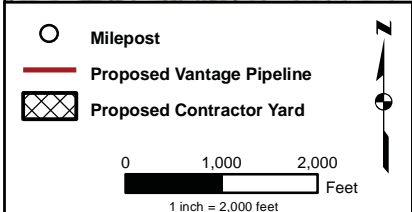
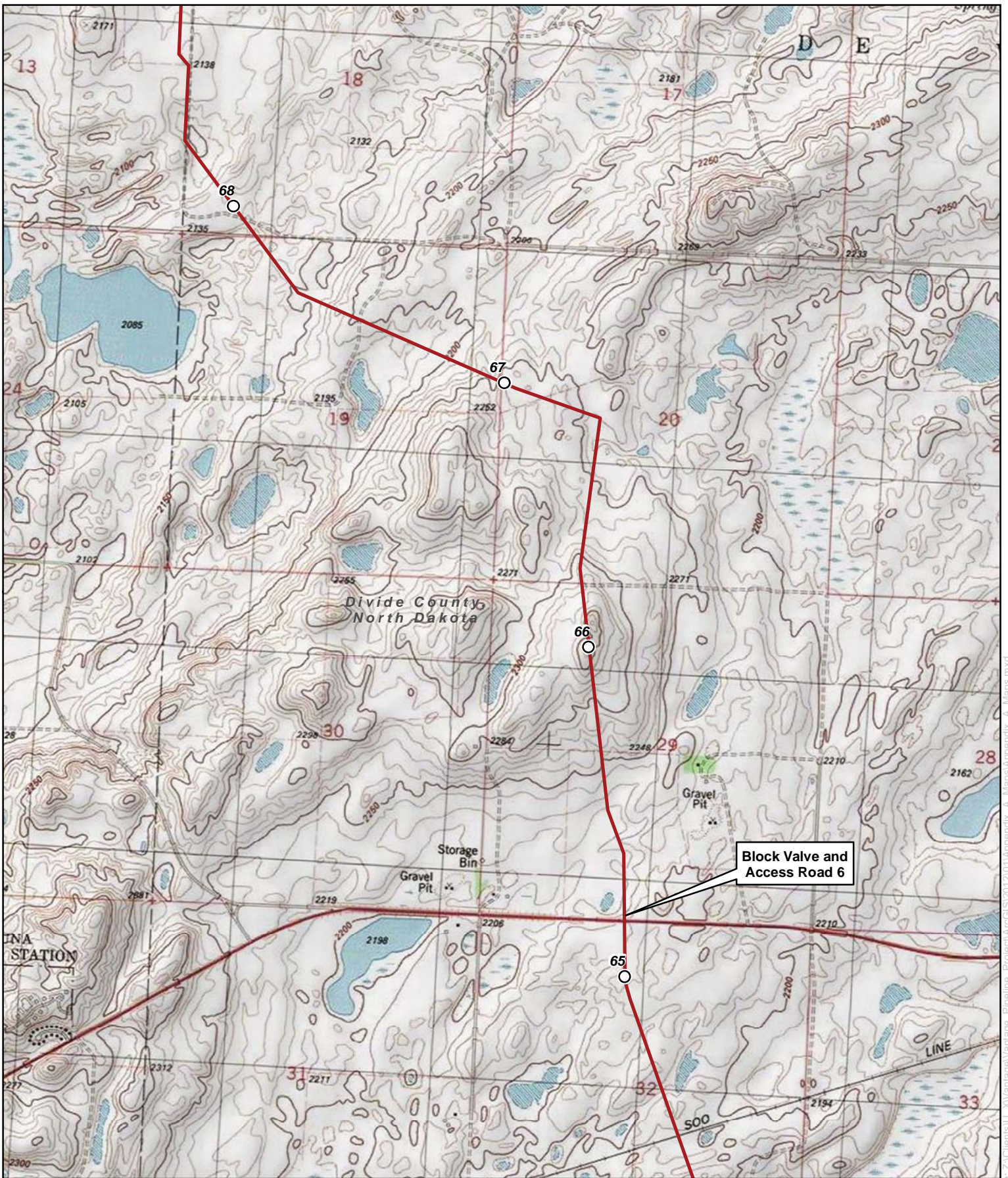


Appendix A

Vantage Pipeline Project

Divide County
North Dakota

Source: z:\clients\U_X\W\maps\Vantage_Pipeline_Project\ArcGIS\2012\10\W\Appendix_A_Maps\Appendix_A_1.mxd



Appendix A

Vantage Pipeline Project

Divide County
North Dakota



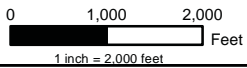
Block Valve and
Access Road 7

Divide County,
North Dakota

Skjermo Lake
2091

E L K H O R N

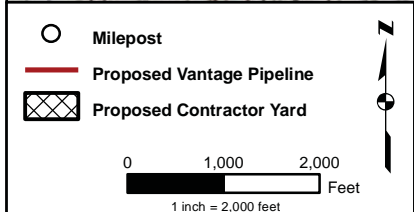
- Milepost
- Proposed Vantage Pipeline
- ▣ Proposed Contractor Yard



Appendix A

Vantage Pipeline Project

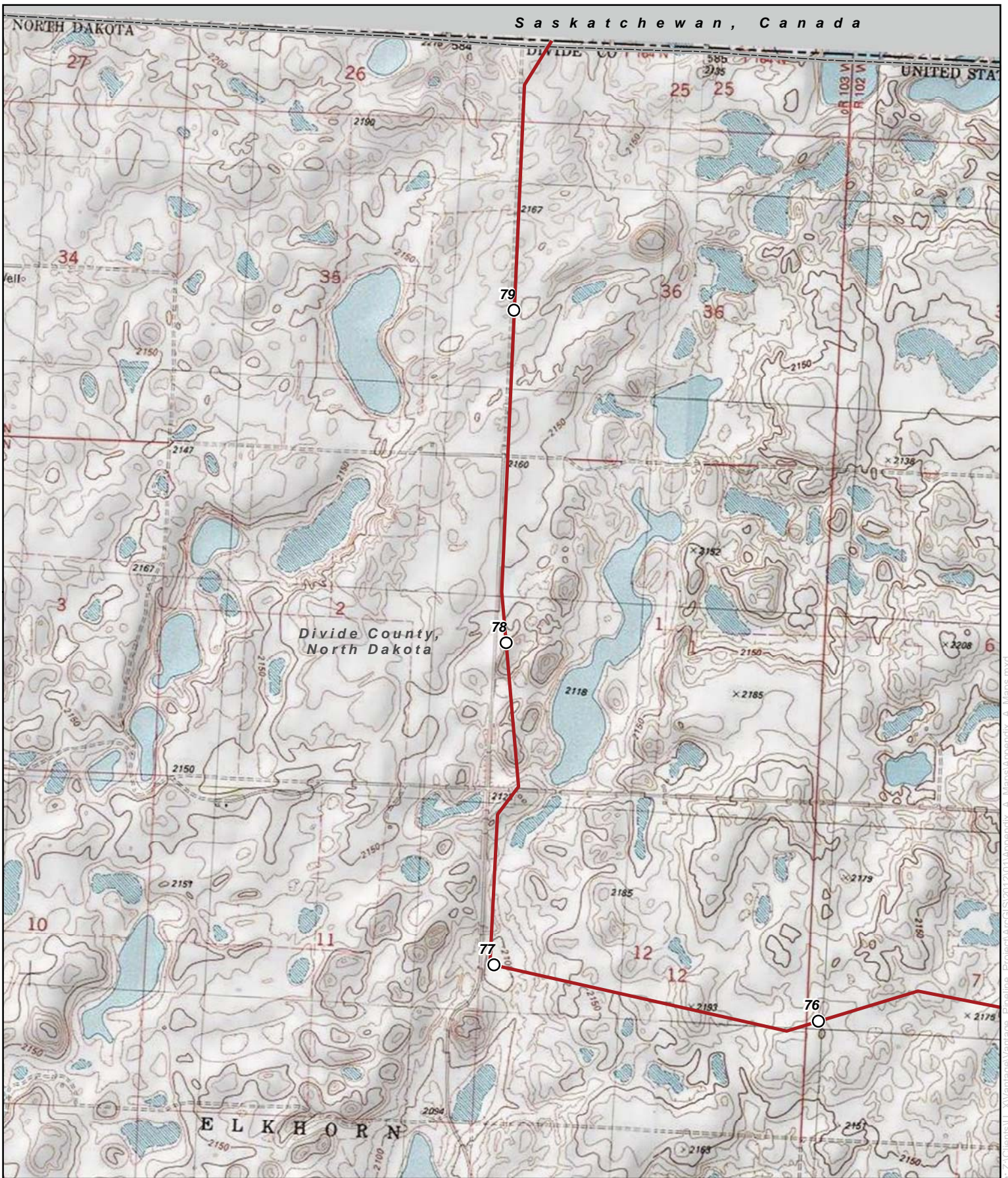
Divide County
North Dakota



Appendix A

Vantage Pipeline Project

Divide County
North Dakota



Saskatchewan, Canada

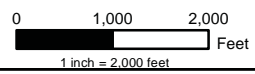
NORTH DAKOTA

UNITED STATES

Divide County,
North Dakota

ELKHORN

- Milepost
- Proposed Vantage Pipeline
- ▣ Proposed Contractor Yard



Appendix A

Vantage Pipeline Project

Divide County
North Dakota

Source: Z:\Clients\U_XV\Vantage\Vantage_Pipeline_Project\ArcGIS2012\10\Appendix_A_maps\Appendix_A_maps.mxd Date: 1/26/2012