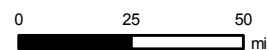


KC HARVEY
ENVIRONMENTAL, LLC

376 Gallatin Park Drive
Bozeman, MT 59715
(406) 585-7402
www.kcharvey.com

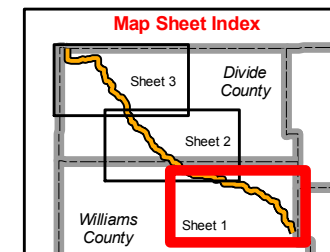


- Cities
- Mile Post Markers
- Block Valve
- Vantage Pipeline Route

NAIP Imagery 2012

- Secondary Road
- Operational Railroad
- Abandoned Railroad

- North Dakota Game and Fish
- North Dakota Land Department
- US Bureau of Land Management
- Water Fowl Production Area
- National Wildlife Refuge



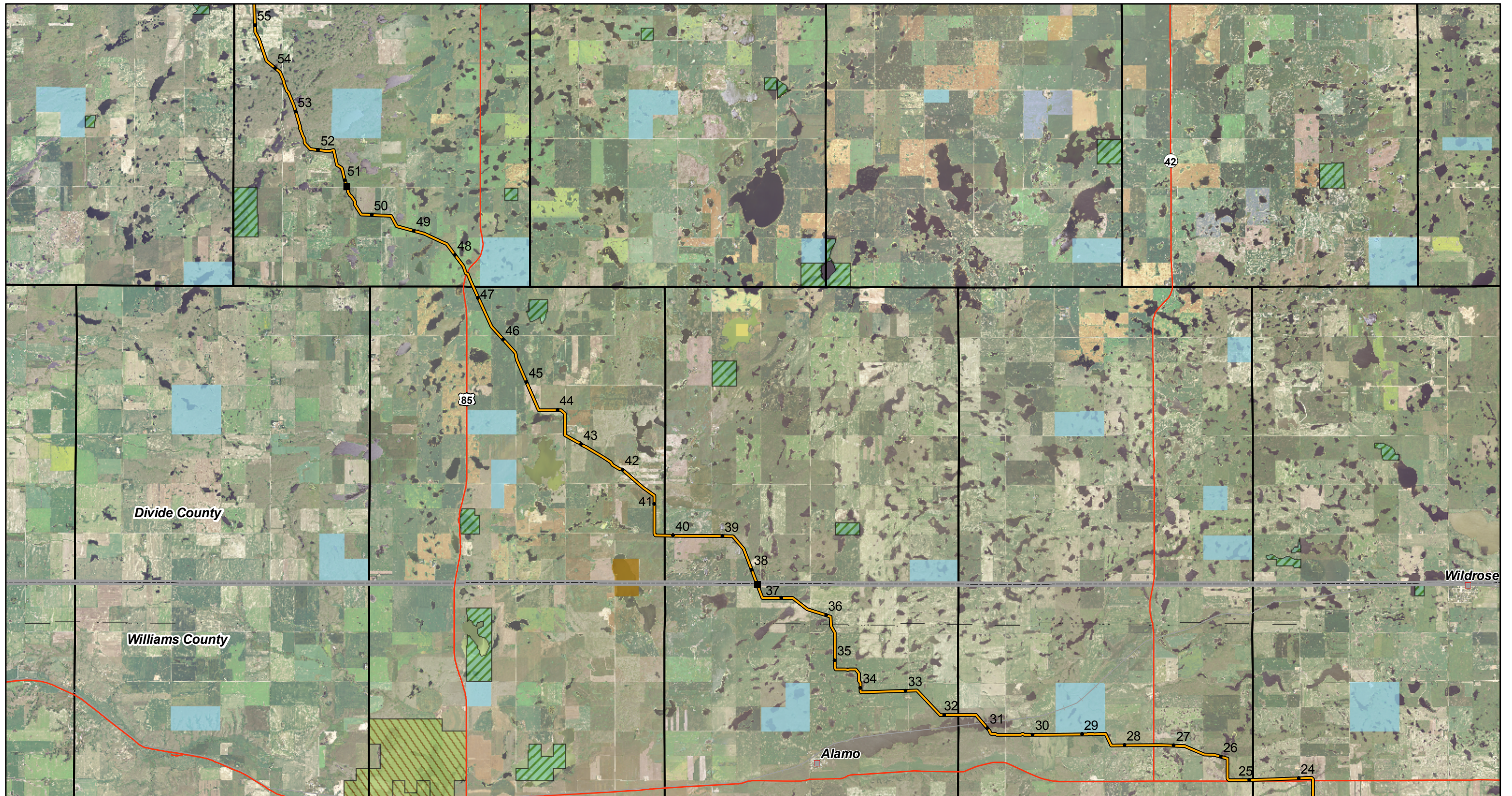
VANTAGE PIPELINE US LP

Route Map
Divide and Williams Counties,
North Dakota



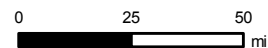
Sheet 1
Map Scale 1:120,000
Map Projection : NAD 83 ND SP 3301 FT

Date: July 2013 | Version: 3



KC HARVEY
ENVIRONMENTAL, LLC

376 Gallatin Park Drive
Bozeman, MT 59715
(406) 585-7402
www.kcharvey.com

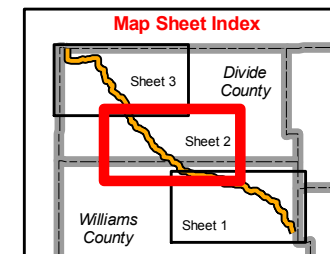


- Cities
- Mile Post Markers
- Block Valve
- Vantage Pipeline Route

NAIP Imagery 2012

- Secondary Road
- Operational Railroad
- Abandoned Railroad

- North Dakota Game and Fish
- North Dakota Land Department
- US Bureau of Land Management
- Water Fowl Production Area
- National Wildlife Refuge



VANTAGE PIPELINE US LP

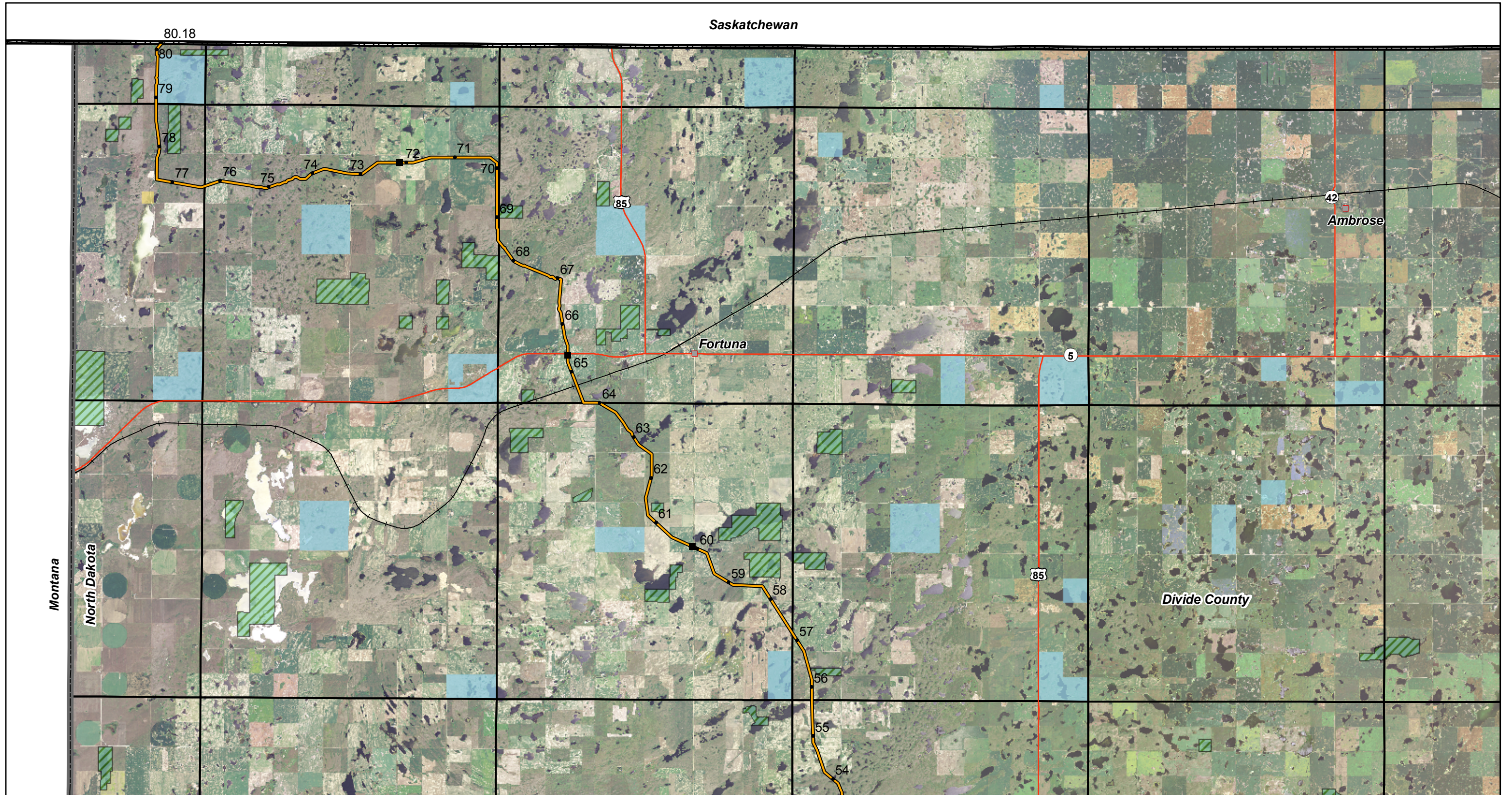
Route Map
Divide and Williams Counties,
North Dakota



Sheet 2
Map Scale 1:120,000
Map Projection : NAD 83 ND SP 3301 FT

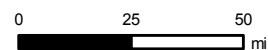
Date: July 2013 | Version: 3

Saskatchewan



KC HARVEY
ENVIRONMENTAL, LLC

376 Gallatin Park Drive
Bozeman, MT 59715
(406) 585-7402
www.kcharvey.com

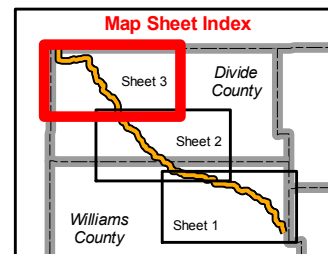


- Cities
- Mile Post Markers
- Block Valve
- Vantage Pipeline Route

NAIP Imagery 2012

- Secondary Road
- Operational Railroad
- Abandoned Railroad

- North Dakota Game and Fish
- North Dakota Land Department
- US Bureau of Land Management
- Water Fowl Production Area
- National Wildlife Refuge



VANTAGE PIPELINE US LP

Route Map
Divide and Williams Counties,
North Dakota



Sheet 3
Map Scale 1:120,000
Map Projection : NAD 83 ND SP 3301 FT

Date: July 2013 | Version: 3