



Vantage Pipeline US LP Weekly Report for the week ending August 24, 2013

Case Number PU-11-109

- Approximate Progress Numbers:**
- Spread US – 80 Miles**
- **Overall Spread Progress = 7.28%**

Progress of Remaining Mainline Activities	
Mowing	62.11%
ROW	35.79%
Stringing	8.08%
Bending	0.00%
Bores / HDD	3.27%
Welding	0.00%
Coating	0.00%
Ditch	0.00%
Lower-in	0.00%
Tie-in	0.00%
Backfill	0.00%
Clean-up	0.00%
Hydrotest	0.00%

Pipeline Construction started construction on August 1, 2013.

- Where there any construction shut-downs this week? If so, when did construction re-start?**
- No shut-downs this week.
- Bores (directional or slip/punch):**
- There have been two bores this week at Stations 139+40 and 108+20, both are Private Roads. The Station 139+40 bore was 34' long and the Station 108+20 bore was 32' long for a total bore footage of 66'.
- Where there cathodic protection stations installed this week? If yes, how many?**
- There were no Cathodic Protection Stations installed this week.
- Please comment on this week's activities for Route Restoration & Revegetation:**



PSC Weekly Report

- No restoration and revegetation activities have occurred prior to August 23. Restoration and revegetation activities will not occur until trenching and backfill is completed.

- Please comment on this week's Tree & Shrub restoration activity:**
 - Data collection for the tree and shrub inventory has been completed between mile posts 0.28 and 65.0 (approximately 81% complete).

- % of restoration completed (tree removal):**
 - Tree removal has occurred at shelterbelt crossings located between MP0.28 and MP33.4 (approximately 41% complete). Tree planting will not begin until restoration activities are completed. Coordination with landowners will be done to determine locations where replacement trees will be planted, and desired species.

- Were there any changes or deviation of the line outside the permanent vantage Right-of-Way? Note that any changes must be approved prior to construction (trenching).**
 - There were no changes or deviations to the permanent Right-of-Way this week.

- Please comment on Erosion Control implementation and include 3 or 4 pictures (eg. erosion control silt fences, welding pipe, tape coating, road crossings, trenching, bending of pipe, supports and braces, safety measures for traffic control, etc.).**
 - Stormwater BMPs have been installed to Mile Post 32.94. Silt fence is installed around drainages and wetland areas for sediment control. Soil berms and vegetative buffer zones will also control sediment discharge. Stripping and grading activities began on August 8, 2013. One rainfall event occurred during the past week (August 18, 2013) with a rainfall depth of 0.002 inches reported. No notable erosion or sediment discharge was observed as a result of rainfall since the start of construction.

- Were there any sightings of threatened/endangered species (including bald or golden eagles) this week? If yes, where? Did it effect construction? Elaborate on shut-down section above if applicable.**
 - No piping plover or other threatened and endangered species or eagles were sighted or reported.

- Please comment on the stripping and segregation of topsoil this week. (% complete or miles that week – stripping phase):**
 - Topsoil stripping has been completed between mile posts 0.28 and 19.85 and 22.0 to 32.94, approximately 38.1% complete. Topsoil depth is variable and ranges between 6 and +12 inches. Topsoil stockpiles are located on the outside of the temporary work space. The upper surface of the subsoil layer has been used to level the working area where required. In locations classified as prime farmland A and B soil horizons as stockpiled separately



PSC Weekly Report

when excavated. Soils classified as prime farmland was encountered in the following locations.

Tract	Prime farmland Polygons		
	Milepost begin	Milepost End	Length (ft)
ND-WL-085.5	6.129	6.340	1119
ND-WL-069.5	11.197	11.297	528
ND-WL-066.5	12.267	12.397	686
ND-WL-064.5	12.863	13.009	770

No trench excavation has occurred at this time.

- Were any cultural resources, paleontological resources, archeological resources, historical resources, or grave sites discovered during construction? There should be at least one entry at the end of the report that none of these items were seen during construction. If yes, what action was taken at the site?**
 - Historical and tribal monitors are accompanying all grade and stripping activities and have not encountered any features that have not previously been identified.

 - Reclamation and clean-up chainages from start-finish, please comment on coordination with ongoing construction:**
 - No reclamation and cleanup has occurred at this time.

 - Please note location(s) of any repairs to Fencing and Gates this week:**
 - Fencing including installation of gates has been completed to MP69.

 - Please document the restoration of any off-RoW roads this week:**
 - Restoration of off RoW roads has not been needed during the reporting period.

 - Please comment on Fertilization and Reseeding activities this week:**
 - No seeding or fertilization work has occurred at this time.
-

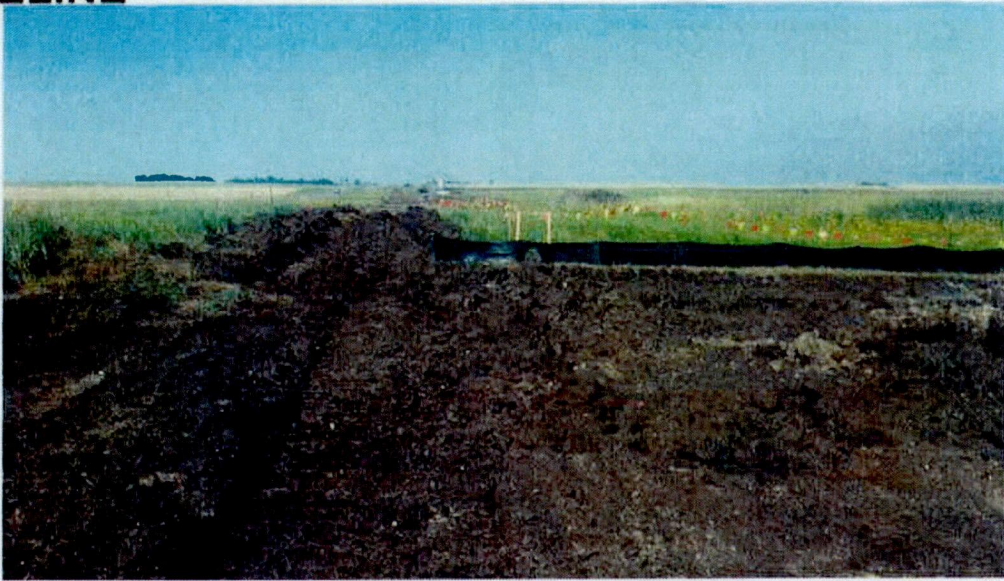


August 20 - matting places at wetland crossing in bore location at MP25.59.

August 19 - Tree removal at shelterbelt MP12.42.



August 17 - Topsoil stripping at MP10.83 in corn field.



August 21 - Soft soils encountered adjacent to wetland where matting is needed.



Date: August 16, 2013

Michels started construction on August 1, 2013.

- Where there any construction shut-downs this week? If so, when did construction re-start?
- No shut-downs this week.

- Bores (directional or slip/punch) as-built drawings attached: YES / NO
- No Bores this week

- Where there cathodic protection stations installed this week? If yes, how many?
- No cathodic protection station installed this week.

- Please comment on this week's activities for Route Restoration & Revegetation.
- No restoration and revegetation activities have occurred prior to August 12.

- Please comment on this week's Tree & Shrub restoration activity:
- Data collection for the tree and shrub inventory has been completed between mile posts 0.28 and 43.37 (approximately 54% complete).

- % of restoration completed (tree removal):
- Tree removal has not occurred at this time. Tree removal will be limited to a 50 foot width in shelter belts as specified by the PSC.

- Were there any changes or deviation of the line outside the permanent vantage Right-of-Way?
Note that any changes must be approved prior to construction (trenching).
- No changes or deviation of the line outside the permanent vantage ROW.

- Please comment on Erosion Control implementation and include 3 or 4 pictures (eg. erosion control silt fences, welding pipe, tape coating, road crossings, trenching, bending of pipe, supports and braces, safety measures for traffic control, etc.).
- Stormwater BMPs have been installed to Mile Post 5.66. Silt fence is installed around drainages and wetland areas for sediment control. Soil berms and vegetative buffer zones will also control sediment discharge. Stripping and grading activities began on August 8, 2013. One rainfall event occurred since the start of grading (August 10, 2013) with a rainfall depth of 0.15 inches. No notable erosion was observed as a result of this occurrence.

- Were there any sightings of threatened/endangered species (including bald or golden eagles) this week? If yes, where? Did it effect construction? Elaborate on shut-down section above if applicable.
 - Critical piping plover habitat was survey on August 12 and no plover were sighted. No other threatened and endangered species or eagles were sighted or reported.

- Please comment on the stripping and segregation of topsoil this week. (% complete or miles that week – stripping phase):
 - Topsoil stripping has been completed between mile posts 0.28 and 3.96, approximately 4.6% complete. Topsoil depth is variable and ranges between 6 and +12 inches. Topsoil stockpiles are located in TWS of the temporary workspace. The upper surface of the subsoil layer has been used to level the working area where required. No trench excavation has occurred at this time.

- Were any cultural resources, paleontological resources, archeological resources, historical resources, or gravesites discovered during construction? There should be at least one entry at the end of the report that none of these items were seen during construction. If yes, what action was taken at the site?
 - Historical and tribal monitors are accompanying all grade and stripping activity and have not encountered any features that have not previously been identified.

- Reclamation and clean-up chainages from start-finish, please comment on coordination with ongoing construction:
 - No reclamation and cleanup has occurred at this time.

- Please note locations(s) of any repairs to Fencing and Gates this week:
 - We have a crew that has been repairing and establishing gaps in the fence for three weeks now. Temporary fences and gates are being installed for construction; no permanent fences/gates have been installed. The contractor is adding equipment crossings as per landowner requests.

- Please document the restoration of any off-RoW roads this week:
 - Nothing to report at this time.

- Please comment on Fertilization and Reseeding activities this week:
 - No seeding or fertilization work has occurred at this time.

□ Approximate Progress Numbers:

- **Spread US – 80 Miles**
- ➤ Overall Spread Progress = 5.0%

Progress of Remaining Mainline Activities	
Mowing	62.11%
ROW	11.90%
Stringing	0.00%
Bending	0.00%
Bores / HDD	0.00%
Welding	0.00%
Coating	0.00%
Ditch	0.00%
Lower-in	0.00%
Tie-in	0.00%
Backfill	0.00%
Clean-up	0.00%
Hydrotest	0.00%



Photo 1 – Grading and stripping at startup 14+72 looking north.



Photo 2 – Top soil stripping approximately 12 inches.



Photo 3 - Silt fence installation along adjacent wetland area.



Photo 4 – Silt fence tie in to timber matting.
