



Vantage Pipeline US LP Weekly Report for the week ending October 26, 2013

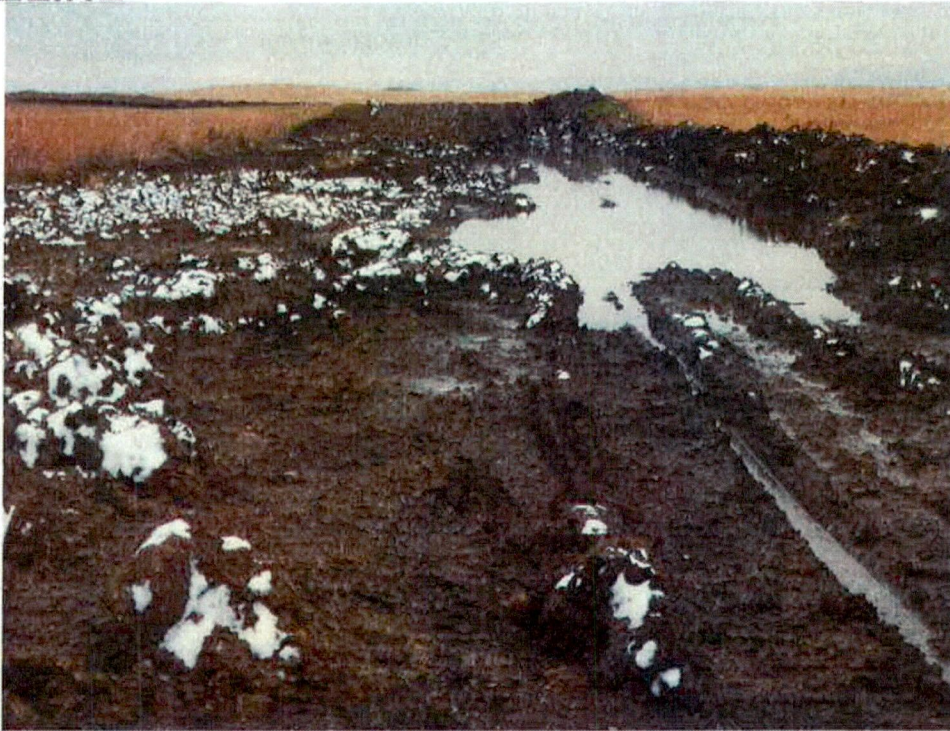
Case Number PU-11-109

- Approximate Progress Numbers:**
Spread US – 80 Miles
Overall Spread Progress = 68.71%

Progress of Remaining Mainline Activities	
Mowing	100.00%
ROW	100.00%
Stringing	100.00%
Bending	100.00%
Bores / HDD	85.30%
Welding	100.00%
Coating	90.40%
Ditch	53.80%
Lower-in	45.70%
Tie-in	45.60%
Backfill	44.20%
Clean-up	28.20%
Hydrotest	0.00%

Pipeline Construction started construction on August 1, 2013.

- Where there any construction shut-downs this week? If so, when did construction re-start?**
- No shut-downs this week.
- Bores (directional or slip/punch):**
- There have been 0 bores in the past week.
- Are there cathodic protection stations installed this week? If yes, how many?**
- There were no Cathodic Protection Stations installed this week.
- Please comment on this week’s activities for Route Restoration & Revegetation:**
- Restoration and revegetation activities will begin when topsoil cover is adequately dry along the ROW.



Difficult surface conditions encountered by the reclamation crew.

- Please comment on this week's Tree & Shrub restoration activity:**
 - The reclamation assessment for tree and shrub restoration is complete. Final replacement numbers are being compiled. Restoration of trees and shrubs will begin when adequate topsoil cover has been completed.

- Percent of restoration completed (tree removal):**
 - Tree planting will not begin until restoration activities are implemented. Coordination with landowners will be completed to determine locations where replacement trees will be planted, and desired species.

- Were there any changes or deviation of the line outside the permanent vantage Right-of-Way? Note that any changes must be approved prior to construction (trenching).**
 - There were no changes or deviations to the permanent Right-of-Way this week.

- Please comment on Erosion Control implementation and include 3 or 4 pictures (eg. erosion control silt fences, welding pipe, tape coating, road crossings, trenching, bending of pipe, supports and braces, safety measures for traffic control, etc.).**
 - Stormwater BMPs have been installed and inspected along the entire 80 miles of ROW. Silt fence and straw wattles have been installed around drainages, between soil berms, around matting, and wetland and riparian areas for sediment



PSC Weekly Report

control. Soil berms, ditches, and vegetative buffer zones have also been effective for control of sediment discharge.

Storm water from minor precipitation events during the reporting period continues to accumulate in boring pits, trenches, and within low spots along the ROW. Water is being removed by pumping water into sediment bags that are placed in heavily vegetated areas for water dispersion and in some cases placed behind an existing silt fence where space is limited. Michel's environmental crew is systematically addressing details of any required maintenance noted during inspections.

Trenching activities are ongoing using excavators. Pipe stringing and bending were previously completed and pipe welding (excluding tie-ins) was completed during this reporting period. Trench breaker locates have been completed to MP 60.08. Set-up continued for block-valve construction at block valve locations during this reporting period.

Conventional drilling under major roads and wetlands has been completed, with the exception of the wetland near MP 51.79. One HDD bore location remains to be completed. The directional bore site under a cultural site beginning at MP 68.37 ending at MP 67.85 continued during this reporting period. Release of mud and water has been observed along this drill line. All releases have been promptly addressed with the installation of silt fence and straw wattles. A dry wetland near MP 68.02 received some mud and water from the drill. Cleanup of the releases will begin after drilling is complete and pipe has been installed. Since the wetland is within a wetland easement, cleanup methods will be determined based on U.S. Fish and Wildlife Service requirements. Scott Williams with the USFWS was contacted about the release and visited the site on 10/25/13.

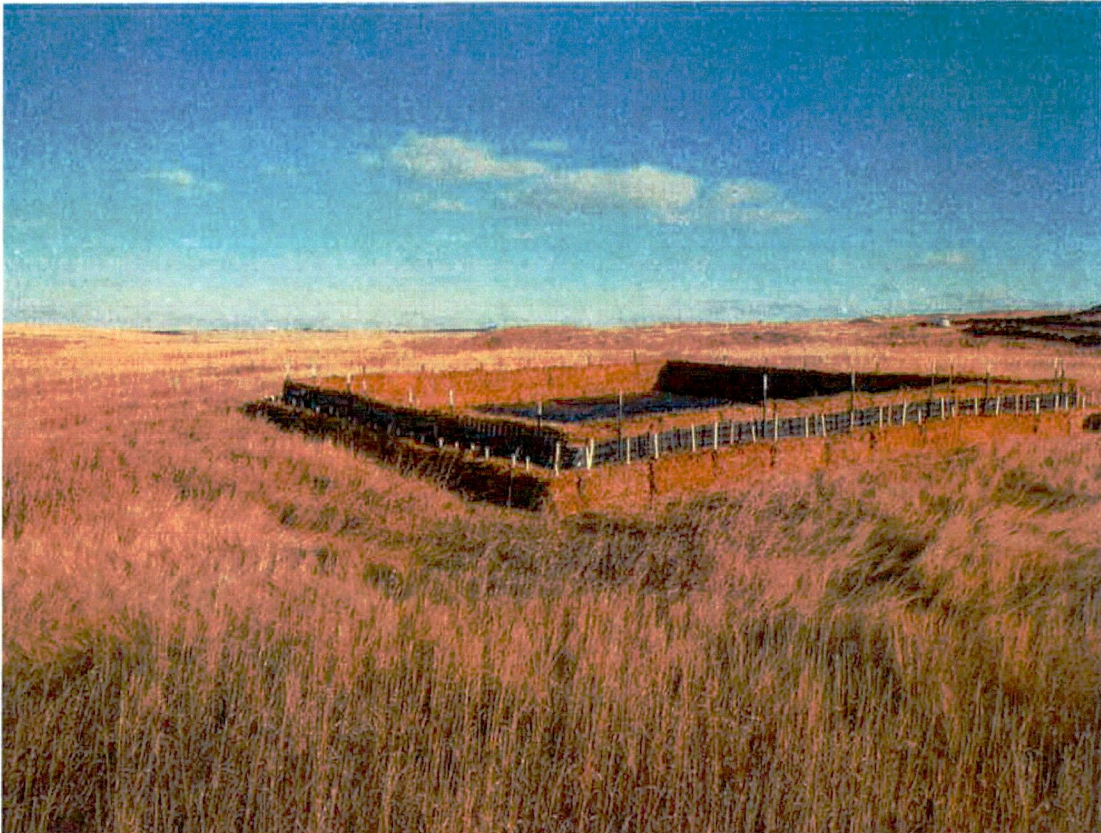


Straw wattles placed to divert water from cow paths onto pipeline corridor near MP68.06.



Wetland impacted by water and mud near MP 68.03.

A water containment area was constructed during this reporting period near MP 30.93. The containment structure, constructed consistent with Detail 9 of the project EPP, will be used to dissipate discharge water from hydrostatic testing of the pipeline from MP 0.17 to MP 30.88.



Containment area near MP 30.93, constructed to dissipate discharge water used during hydrostatic pipeline testing.

- Were there any sightings of threatened/endangered species (including bald or golden eagles) this week? If yes, where? Did it effect construction? Elaborate on shut-down section above if applicable.**
 - No threatened and endangered species or eagles were sighted or reported.
- Please comment on the stripping and segregation of topsoil this week. (% complete or miles that week – stripping phase):**
 - All stripping has been completed. Topsoil stockpiles are located on the outside edge of the temporary work space and are being spread across the ROW as part of the re-grading and contouring activities.
- Were any cultural resources, paleontological resources, archeological resources, historical resources, or grave sites**

discovered during construction? There should be at least one entry at the end of the report that none of these items were seen during construction. If yes, what action was taken at the site?

Archaeological monitoring continued on the pipeline project from Monday, 10/21/13 through Saturday, 10/26/13.

Cultural monitoring activity focused on trenching and backfill crews working intermittently near TCPs from milepost (MP) 28.54 to MP 43.36, and a boring crew working at MP 67.86 to MP 68.16. Grading work between MP 19.85 and MP 23.67 was also observed. A proposed dewatering station area was examined east of the construction corridor between MP 30.90 and MP 30.94 south of Cottonwood Lake. A projectile point isolated find was located near MP38.34. The point is tentatively identified as a Midland Point dating from approximately 11,000 to 10,300 years ago (see photo below). This is associated with the Folsom Complex of the Paleo-Indian period. The point was located within the surface dirt clearing pile and was collected for analysis. This find will have no effect on construction activity.



Projectile Point found during monitoring near MP 38.34.

A pipeline pressure test dewatering station south of Cottonwood Lake and east of the construction corridor between MP 30.90 and MP 30.94 was examined by the cultural and archeological representative. No cultural features or artifacts were observed. The dewatering station is now in place.



PSC Weekly Report

- Reclamation and clean-up chainages from start-finish, please comment on coordination with ongoing construction:**
 - Regrading and topsoil spreading continued during this reporting period. Coordination and communication with crews continues as environmental monitors are on-site for topsoil spreading, rock management, location of slope breaks, and location of final stormwater BMP installations.

- Please note locations(s) of any repairs to Fencing and Gates this week:**
 - Compromised gates and fences continue to be repaired or replaced during construction activities.

- Please document the restoration of any off-ROW roads this week:**
 - Restoration of off- ROW roads has not been needed during the reporting period.

- Please comment on Fertilization and Reseeding activities this week:**
 - No seeding or fertilization work has occurred at this time. Formulation of appropriate seed mixtures for reclamation along the ROW has been completed. Seeding will begin during the next reporting period.



PSC Weekly Report

Vantage Pipeline US LP Weekly Report for the week ending October 19, 2013

Case Number PU-11-109

- Approximate Progress Numbers:**
Spread US – 80 Miles
Overall Spread Progress = 60.45%

Progress of Remaining Mainline Activities	
Mowing	100.00%
ROW	100.00%
Stringing	100.00%
Bending	100.00%
Bores / HDD	63.20%
Welding	94.00%
Coating	75.40%
Ditch	39.30%
Lower-in	30.50%
Tie-in	33.50%
Backfill	29.70%
Clean-up	20.30%
Hydrotest	0.00%

Pipeline Construction started construction on August 1, 2013.

- Where there any construction shut-downs this week? If so, when did construction re-start?**
 - No shut-downs this week.
- Bores (directional or slip/punch):**
 - There have been 0 bores in the past week.
- Are there cathodic protection stations installed this week? If yes, how many?**
 - There were no Cathodic Protection Stations installed this week.
- Please comment on this week’s activities for Route Restoration & Revegetation:**
 - The reclamation assessment and seed mix formulation for ROW revegetation have been completed. Seed mix has been ordered. Restoration and revegetation activities will begin when topsoil cover is adequately dry along the ROW. Route topsoil spreading has been completed to MP 17 (approximately 21% complete).
- Please comment on this week’s Tree & Shrub restoration activity:**
 - The reclamation assessment for tree and shrub restoration is complete. Final replacement numbers are being compiled. Restoration of trees and



PSC Weekly Report

shrubs will begin when adequate topsoil cover has been completed through mapped locations.

- Percent of restoration completed (tree removal):**
 - Tree planting will not begin until restoration activities are implemented. Coordination with landowners will be completed to determine locations where replacement trees will be planted, and desired species.

- Were there any changes or deviation of the line outside the permanent vantage Right-of-Way? Note that any changes must be approved prior to construction (trenching).**
 - There were no changes or deviations to the permanent Right-of-Way this week.

- Please comment on Erosion Control implementation and include 3 or 4 pictures (eg. erosion control silt fences, welding pipe, tape coating, road crossings, trenching, bending of pipe, supports and braces, safety measures for traffic control, etc.).**
 - Stormwater BMPs have been installed and inspected along the entire 80 miles of ROW. Silt fence and straw wattles have been installed around drainages, between soil berms, around matting, and wetland and riparian areas for sediment control. Soil berms, ditches, and vegetative buffer zones have also been effective for control of sediment discharge.

A precipitation event occurred on October 11, 2013 with a total accumulation of over 1.5 inches of rain. A stormwater event BMP inspection was completed during this reporting period. Storm water from the event accumulated in boring pits, trenches, and within low spots along the ROW. Water is being removed by pumping water into sediment bags that are placed in heavily vegetated areas for water dispersion and in some cases placed behind an existing silt fence where space is limited. The contractor's environmental crew is systematically addressing details of any required maintenance noted during inspections.

Several excavators continue trenching activities to MP 31 (Approx. 39% complete). Pipe stringing was previously completed and pipe bending was completed during this reporting period. Trench breaker locates have been completed to MP48. Set-up continued for block-valve construction at block valve locations during this reporting period.

Conventional drilling under major roads and wetlands has been completed. Two HDD bore locations remain to be completed. The directional bore under a cultural site at MP 79.26 ending at MP 79.15 was completed without any environmental concerns. The directional bore under a cultural site beginning at MP 74.98 ending at MP 75.39 was also completed during this reporting period. The directional bore site under a cultural site beginning at MP 68.37

ending at MP 67.85 was initiated during this reporting period. Release of mud and water from the drill occurred during this drill. All releases have been promptly contained with silt fence and straw wattles. No wetlands or riparian areas were impacted by drill mud release. Cleanup of the releases will begin after drilling is complete and pipe has been installed. Cleanup methods of releases within exclusion zones will be determined based on landowner requirements.



Release of mud and water northeast of ROW at MP 68.01.

- Were there any sightings of threatened/endangered species (including bald or golden eagles) this week? If yes, where? Did it effect construction? Elaborate on shut-down section above if applicable.**
 - No threatened and endangered species or eagles were sighted or reported.
- Please comment on the stripping and segregation of topsoil this week. (% complete or miles that week – stripping phase):**
 - Topsoil stockpiles are located on the outside edge of the temporary work space and are being spread across the ROW as part of the re-grading and contouring activities. Regrading, contouring, and topsoil cover placement was completed to MP 17 during this reporting period.
- Were any cultural resources, paleontological resources, archeological resources, historical resources, or grave sites discovered during construction? There should be at least one entry at the end of the report that none of these items were**

seen during construction. If yes, what action was taken at the site?

Archaeological monitoring continued on the pipeline project from Monday, 10/14/13 through Saturday, 10/19/13. Most of the focus was concentrated on watching the drilling operations and minimizing the damage any frac outs may have on known cultural features.

Through most of the week, the ditching crew was in an area of no known archaeological resources, but reached the TCPs south of Cottonwood Lake, around milepost 30, on Thursday, 10/17/2013, and reached the north side of Cottonwood Lake by Friday, 10/18/2013.

No new archaeological, cultural, paleontological, or historical resources were discovered during the week.

□ Reclamation and clean-up chainages from start-finish, please comment on coordination with ongoing construction:

- Regrading and topsoil spreading continued during this reporting period. Coordination and communication with crews continues as environmental monitors are on-site for topsoil spreading, rock management, location of slope breaks, and location of final stormwater BMP installations.



Re-graded ROW after topsoil placement.



PSC Weekly Report

- Please note locations(s) of any repairs to Fencing and Gates this week:**
 - Compromised gates and fences continue to be repaired or replaced during construction activities.

- Please document the restoration of any off-Row roads this week:**
 - Restoration of off- ROW roads has not been needed during the reporting period.

- Please comment on Fertilization and Reseeding activities this week:**
 - No seeding or fertilization work has occurred at this time. Formulation of appropriate seed mixtures for reclamation along the ROW has been completed. Seeding will begin during the next reporting period.