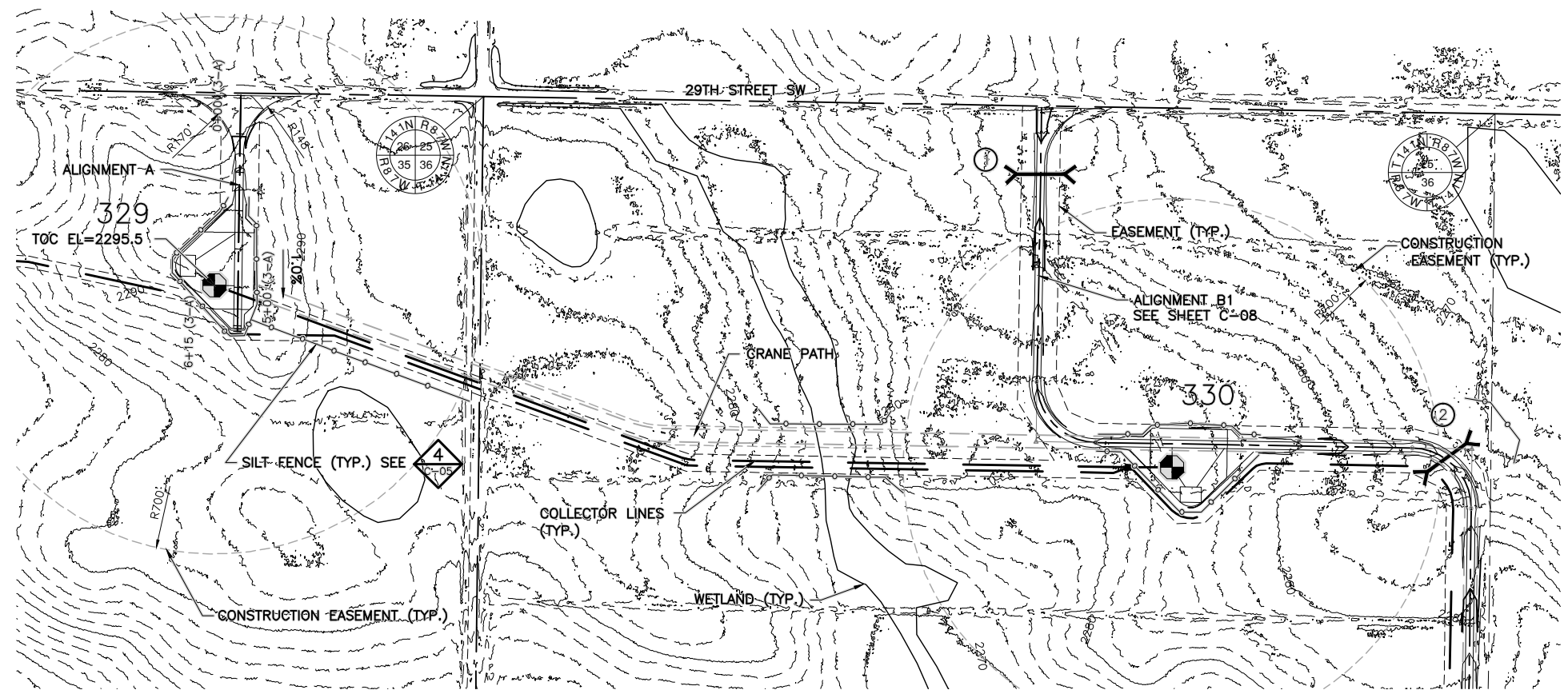
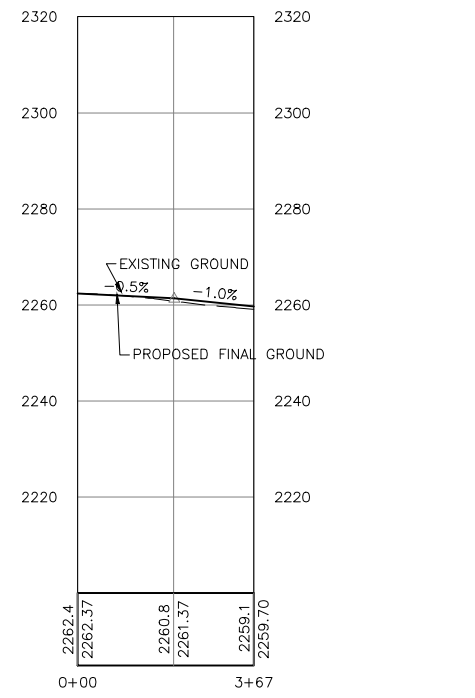


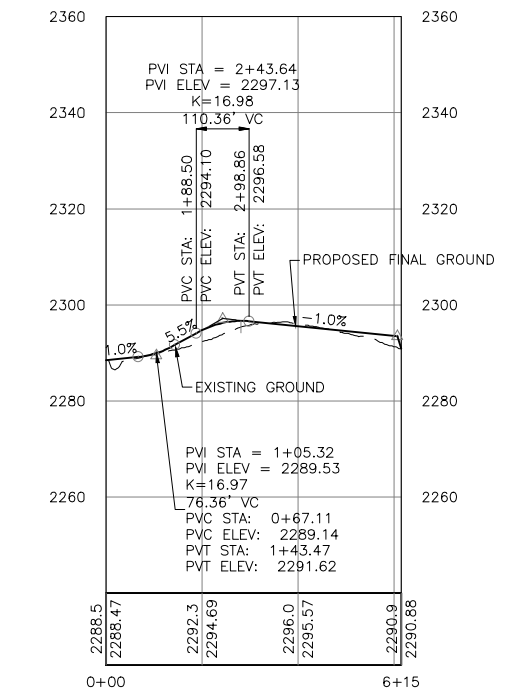
**1 PLAN: ALIGNMENT MET**  
 0 200 400  
 SCALE IN FEET



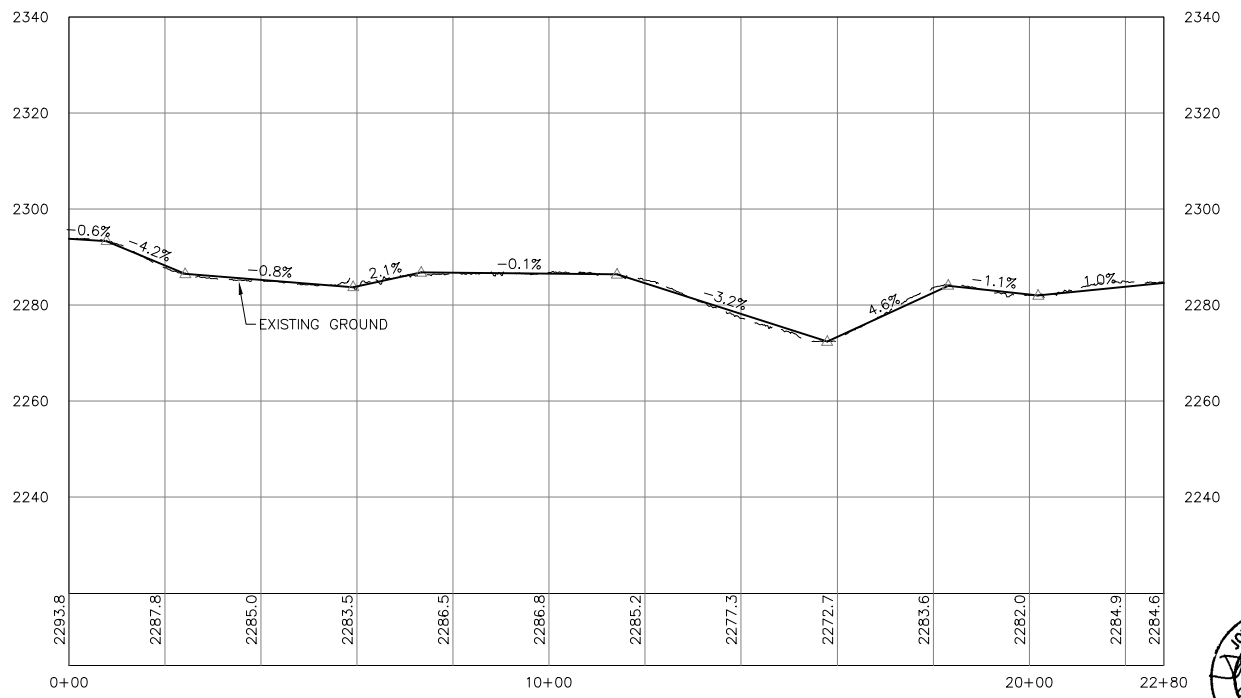
**3 PLAN: ALIGNMENT A**  
 0 200 400  
 SCALE IN FEET



**2 PROFILE: ALIGNMENT MET**  
 0 200 400 0 20 40  
 SCALE IN FEET HORIZONTAL SCALE IN FEET VERTICAL



**4 PROFILE: ALIGNMENT A**  
 0 200 400 0 20 40  
 SCALE IN FEET HORIZONTAL SCALE IN FEET VERTICAL



**5 PROFILE: CRANE PATH FROM ALIGNMENT A TO B1**  
 0 200 400 0 20 40  
 SCALE IN FEET HORIZONTAL SCALE IN FEET VERTICAL

BARR ENGINEERING CO. 4700 WEST 77TH STREET, MINNEAPOLIS, MN 55435-4803  
 Project Office: 4700 WEST 77TH STREET, MINNEAPOLIS, MN 55435-4803  
 Ph: 1-800-632-2277 Fax: (952) 832-2601 www.barr.com  
 Scale AS SHOWN Date 07/05/11  
 Drawn KKB Checked JXB Designed CAD Approved JXB  
 A WIND ENERGY INITIATIVE OF MINNESOTA POWER IN NORTH DAKOTA

NO.	BY	CHK.	APP.	DATE	REVISION DESCRIPTION
A	KKB	CAD	JXB	07/15/11	60 PERCENT SUBMITTAL
B	CAD	CAD	JXB	09/02/11	90 PERCENT SUBMITTAL
C	CAD	CAD	JXB	09/30/11	ISSUED FOR CONSTRUCTION

I HEREBY CERTIFY THAT THIS PLAN, SPECIFICATION, OR REPORT WAS PREPARED BY ME OR UNDER MY DIRECT SUPERVISION AND THAT I AM A DULY LICENSED PROFESSIONAL ENGINEER UNDER THE LAWS OF THE STATE OF NORTH DAKOTA.  
 SIGNATURE: *Joel E. Bahma*  
 PRINTED NAME: JOEL E. BAHMA  
 DATE: 09/30/2011 REG. NO. 4904

CLIENT	DATE
07/15/11	09/02/11

**BARR ENGINEERING CO.**  
 4700 WEST 77TH STREET  
 MINNEAPOLIS, MN. 55435-4803  
 Corporate Headquarters: Ph: 1-800-632-2277  
 Minneapolis, Minnesota Fax: (952) 832-2601  
 Ph: 1-800-632-2277 www.barr.com

RELEASER TO/FOR	DATE RELEASED
A B C 0 1 2 3	

A WIND ENERGY INITIATIVE OF MINNESOTA POWER IN NORTH DAKOTA

**09/30/11 FOR CONSTRUCTION**  
 BISON 3 WIND PROJECT  
 MORTON & OLIVER COUNTIES, NORTH DAKOTA  
 PLAN AND PROFILE - ALIGNMENT A STA. 0+00 TO 6+15 - MET 0+00 TO 3+67

BARR PROJECT No.	CLIENT PROJECT No.
34/30-1006	

DWG. No.	REV. No.
C-07	0

