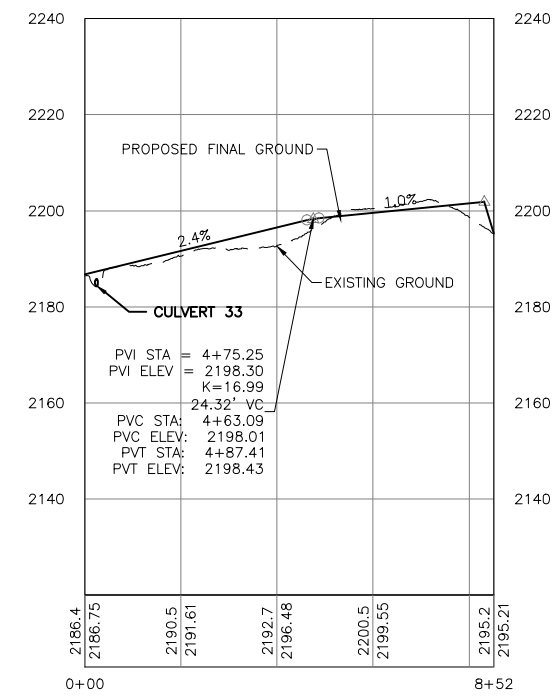
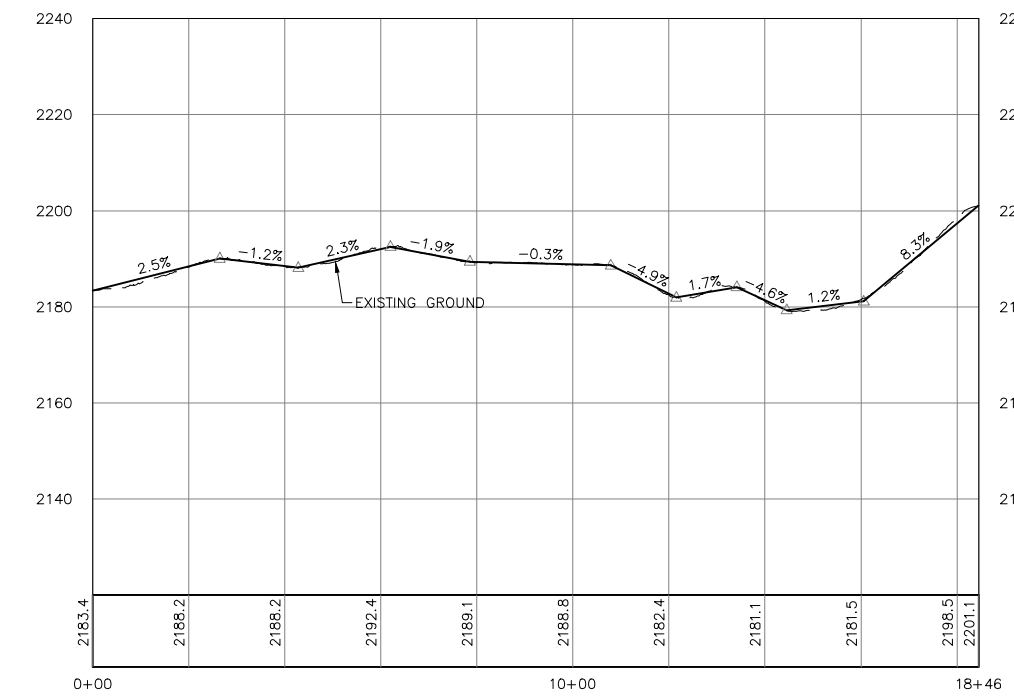


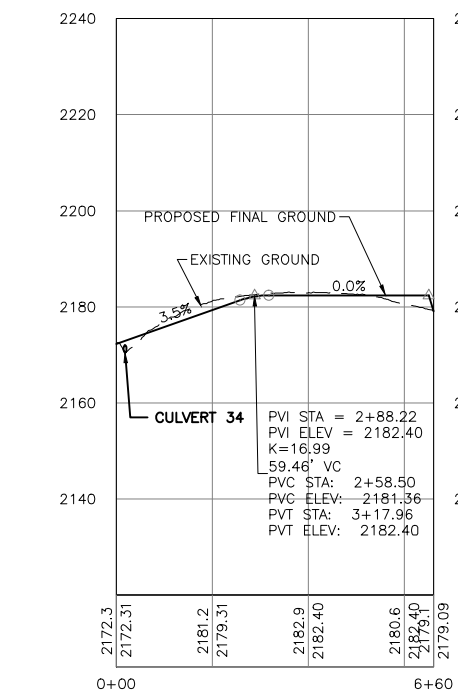
1 PLAN: ALIGNMENT H, I, AND J2
 0 200 400
 SCALE IN FEET



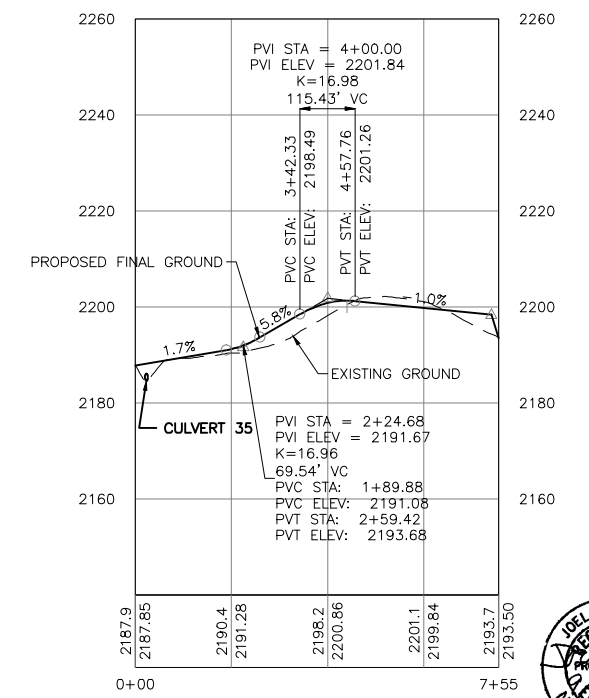
2 PROFILE: ALIGNMENT H
 0 200 400 0 20 40
 SCALE IN FEET HORIZONTAL VERTICAL



3 PROFILE: CRANE PATH FROM ALIGNMENT H TO I
 0 200 400 0 20 40
 SCALE IN FEET HORIZONTAL VERTICAL



4 PROFILE: ALIGNMENT I
 0 200 400 0 20 40
 SCALE IN FEET HORIZONTAL VERTICAL



5 PROFILE: ALIGNMENT J2
 0 200 400 0 20 40
 SCALE IN FEET HORIZONTAL VERTICAL

BARR ENGINEERING CO. 4700 WEST 77TH STREET, MINNEAPOLIS, MN 55435-4803
 PROJECT: BISON 3 WIND PROJECT, MORTON & OLIVER COUNTIES, NORTH DAKOTA
 DRAWING: PLAN AND PROFILE - ALIGNMENTS H, I, J2, AND CRANE PATH FROM H TO I
 DATE: 09/30/11
 SCALE: AS SHOWN
 DRAWN: KKB
 CHECKED: JXB
 DESIGNED: CAD
 APPROVED: JXB
 CLIENT: BARR ENGINEERING CO.
 PROJECT OFFICE: BARR ENGINEERING CO., 4700 WEST 77TH STREET, MINNEAPOLIS, MN 55435-4803
 CONTACT: PH: 1-800-632-2277, FAX: (952) 832-2601, WWW.BARR.COM
 I HEREBY CERTIFY THAT THIS PLAN, SPECIFICATION, OR REPORT WAS PREPARED BY ME OR UNDER MY DIRECT SUPERVISION AND THAT I AM A DULY LICENSED PROFESSIONAL ENGINEER UNDER THE LAWS OF THE STATE OF NORTH DAKOTA.
 SIGNATURE: [Signature]
 PRINTED NAME: JOEL E. BAHAM
 DATE: 09/30/2011, REG. NO.: 4904
 NO. BY CHK. APP. DATE REVISION DESCRIPTION
 A KKB CAD JXB 07/15/11 60 PERCENT SUBMITTAL
 B CAD CAD JXB 09/02/11 90 PERCENT SUBMITTAL
 C CAD CAD JXB 09/30/11 ISSUED FOR CONSTRUCTION



09/30/11 FOR CONSTRUCTION

BARR ENGINEERING CO. 4700 WEST 77TH STREET MINNEAPOLIS, MN. 55435-4803 PH: 1-800-632-2277 FAX: (952) 832-2601 WWW.BARR.COM		Scale: AS SHOWN Date: 07/05/11 Drawn: KKB Checked: JXB Designed: CAD Approved: JXB	BISON 3 WIND PROJECT MORTON & OLIVER COUNTIES, NORTH DAKOTA PLAN AND PROFILE - ALIGNMENTS H, I, J2, AND CRANE PATH FROM H TO I	BARR PROJECT No. 34/30-1006 CLIENT PROJECT No. DWG. No. C-24 REV. No. 0
---	--	---	--	--