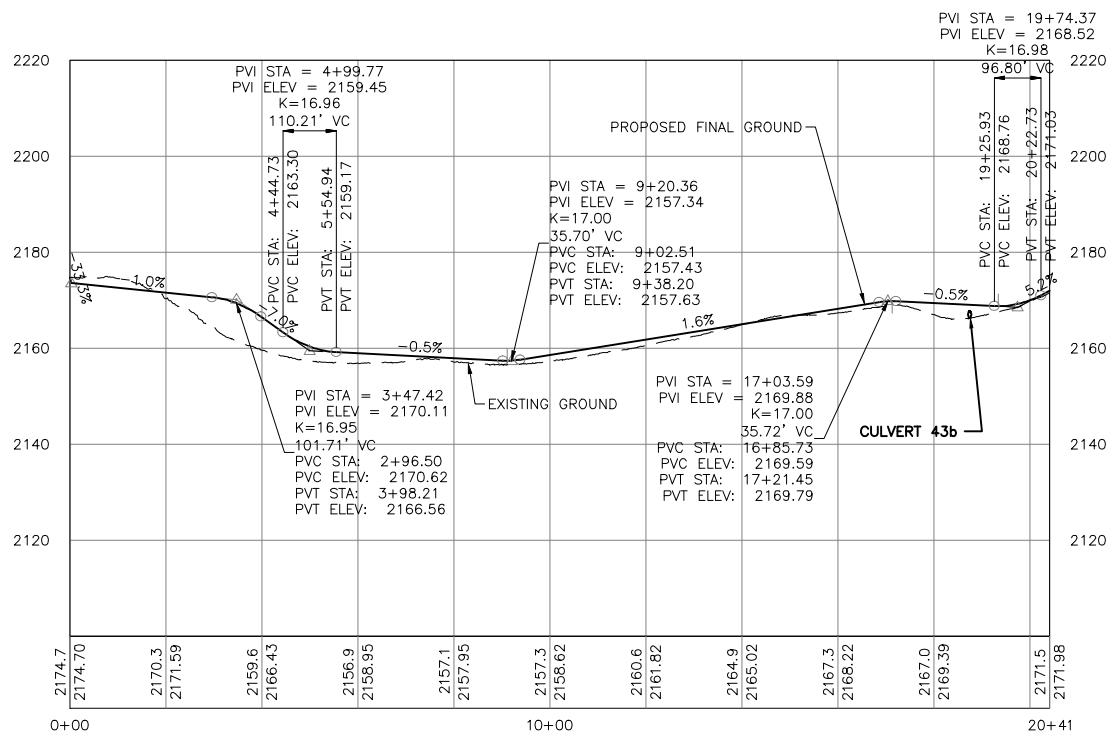
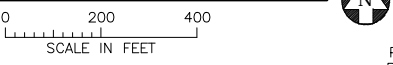
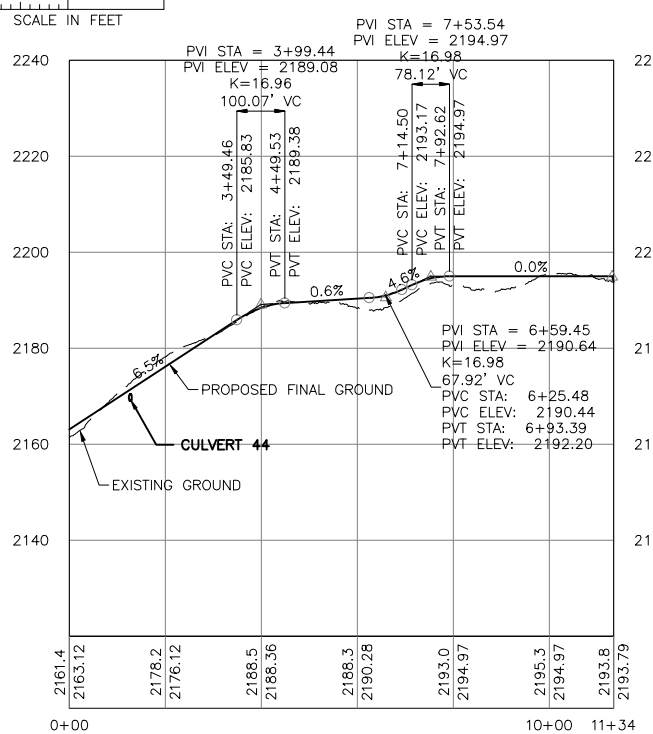
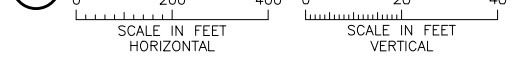


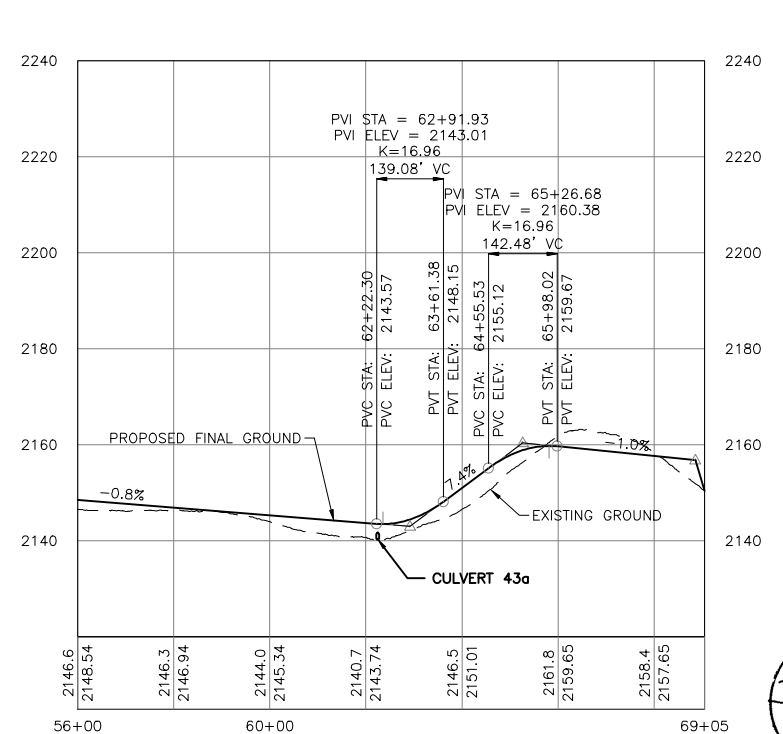
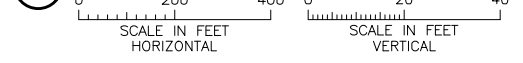
1 PLAN: ALIGNMENT L1 AND L2



3 PROFILE: ALIGNMENT L5



3 PROFILE: ALIGNMENT L2



4 PROFILE: ALIGNMENT L1



09/30/11 FOR CONSTRUCTION

NO.	BY	CHK.	APP.	DATE	REVISION DESCRIPTION
A	KKB	CAD	JXB	07/15/11	60 PERCENT SUBMITTAL
B	CAD	CAD	JXB	09/02/11	90 PERCENT SUBMITTAL
C	CAD	CAD	JXB	09/30/11	ISSUED FOR CONSTRUCTION

I HEREBY CERTIFY THAT THIS PLAN, SPECIFICATION, OR REPORT WAS PREPARED BY ME OR UNDER MY DIRECT SUPERVISION AND THAT I AM A DULY LICENSED PROFESSIONAL ENGINEER UNDER THE LAWS OF THE STATE OF NORTH DAKOTA.

SIGNATURE: *Joel E. Bahma*
 PRINTED NAME: JOEL E. BAHMA
 DATE: 09/30/2011, REG. NO. 4904

CLIENT	DATE
07/15/11	09/02/11

RELEASED TO/FOR	A	B	C	O	1	2	3
DATE RELEASED							

BARR ENGINEERING CO.
 4700 WEST 77TH STREET
 MINNEAPOLIS, MN. 55435-4803
 Corporate Headquarters: Minneapolis, Minnesota
 Phone: 1-800-632-2277
 Fax: (612) 832-2601
 www.barr.com

Scale	AS SHOWN
Date	07/05/11
Drawn	KKB
Checked	JXB
Designed	CAD
Approved	JXB



BISON 3 WIND PROJECT
 MORTON & OLIVER COUNTIES, NORTH DAKOTA

PLAN AND PROFILE - ALIGNMENTS L1
 STA. 50+00 TO 69+05 - L2 - L5

BARR PROJECT No.	CLIENT PROJECT No.
34/30-1006	

DWG. No.	REV. No.
C-28	0