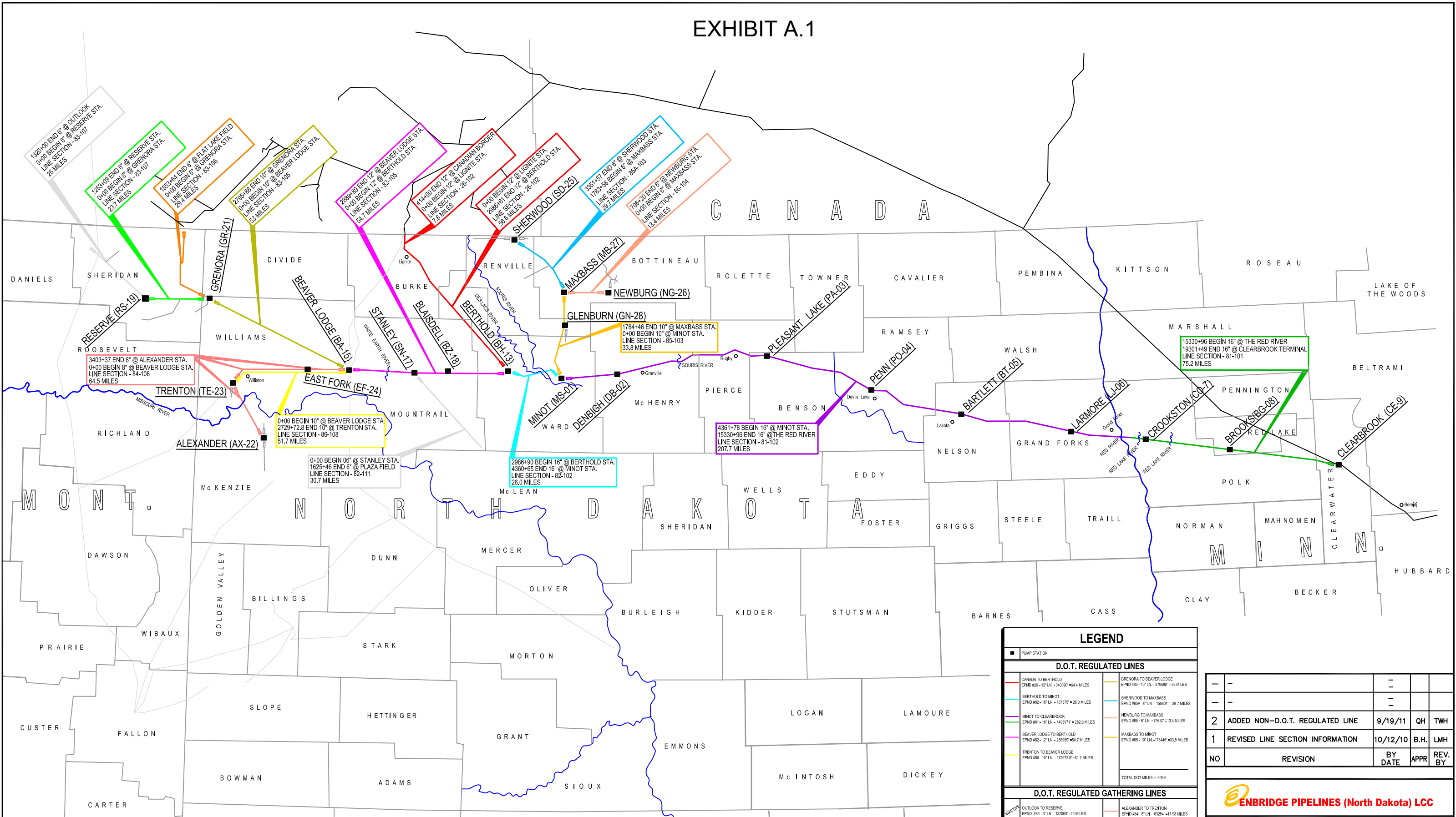


# EXHIBIT A.1

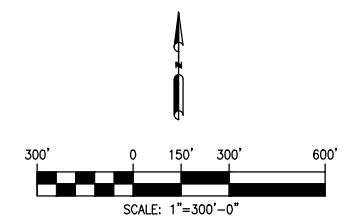
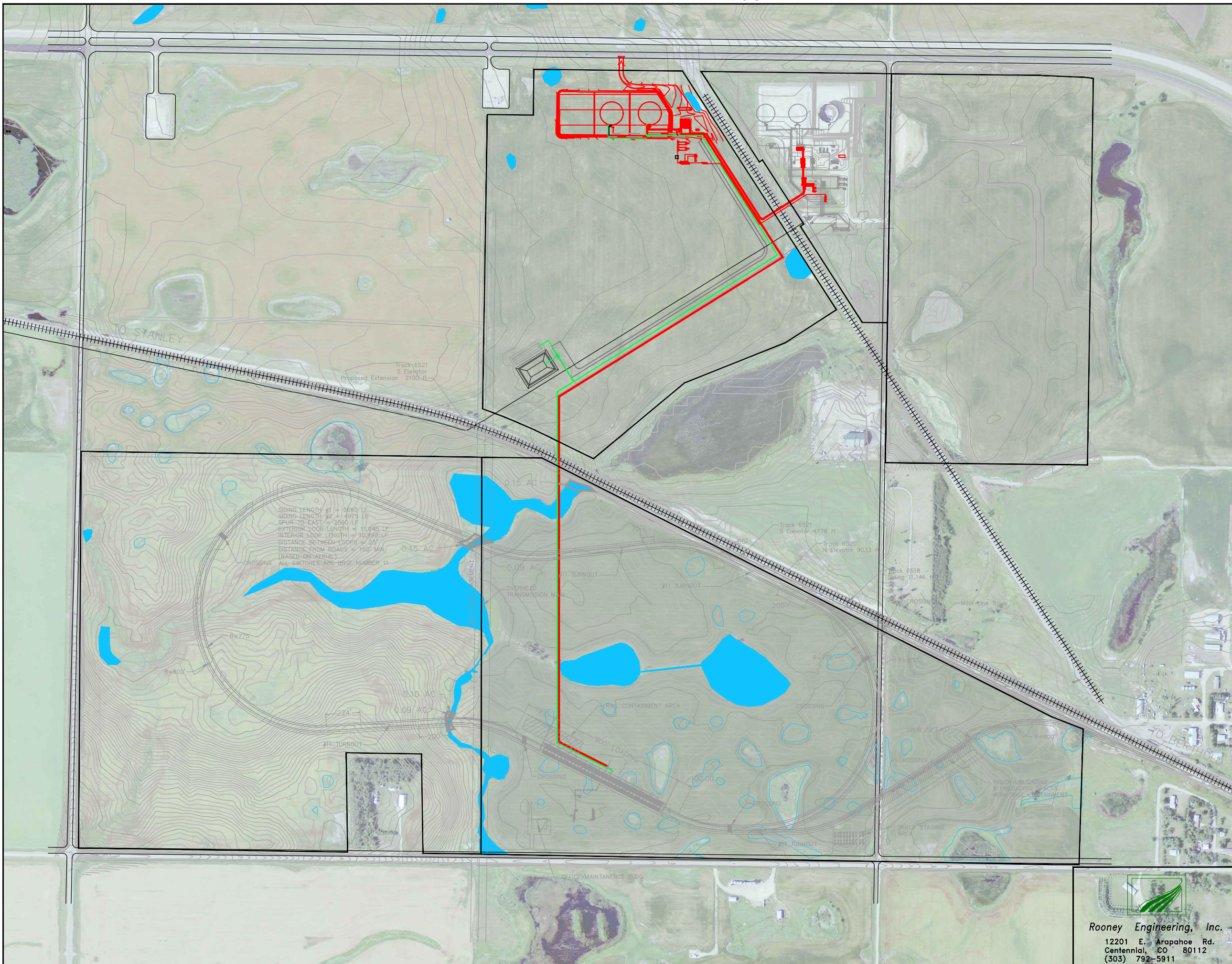


LEGEND	
■	PUMP STATION
D.O.T. REGULATED LINES	
—	CANADA TO BERTHOLD EPND #25 - 12" LN. - 340987' = 64.4 MILES
—	BERTHOLD TO MINOT EPND #82 - 18" LN. - 137375' = 26.0 MILES
—	MINOT TO CLEARBROOK EPND #81 - 18" LN. - 149371' = 282.9 MILES
—	BEAVER LODGE TO BERTHOLD EPND #82 - 12" LN. - 288989' = 54.7 MILES
—	TRENTON TO BEAVER LODGE EPND #86 - 10" LN. - 272972.8' = 51.7 MILES
—	GRENORA TO BEAVER LODGE EPND #83 - 10" LN. - 276585' = 53 MILES
—	SHERWOOD TO MAXBASS EPND #85A - 6" LN. - 158801' = 29.7 MILES
—	NEWBURG TO MAXBASS EPND #85 - 6" LN. - 798207' = 13.4 MILES
—	MAXBASS TO MINOT EPND #85 - 10" LN. - 178446' = 33.8 MILES
TOTAL DOT MILES = 609.6	
D.O.T. REGULATED GATHERING LINES	
—	OUTLOOK TO RESERVE EPND #83 - 6" LN. - 132007' = 25 MILES
—	RESERVE TO GRENORA EPND #83 - 6" LN. - 125307' = 23.7 MILES
—	FLAT LAKE TO GRENORA EPND #83 - 6" LN. - 155364' = 28.4 MILES
—	ALEXANDER TO TRENTON EPND #84 - 6" LN. - 63254' = 11.98 MILES
—	TRENTON TO BEAVER LODGE EPND #84 - 6" LN. - 278936' = 52.45 MILES
TOTAL DOT GATHERING MILES = 142.53	
NON-D.O.T. REGULATED GATHERING LINES	
—	WAREHOUSING PLAZA FIELD TO STANLEY EPND - 6" LN. - 162546' = 30.7 MILES
TOTAL NONDOT GATHERING MILES = 30.7	

—	—	—	—
2	ADDED NON-D.O.T. REGULATED LINE	9/19/11	QH TWH
1	REVISED LINE SECTION INFORMATION	10/12/10	B.H. LMH
NO	REVISION	BY DATE	APPR REV. BY

**MN, ND, MT SYSTEM**
  
**SYSTEM MAP**
  
 LINE SECTION INFORMATION

PROJECT:		
SCALE: NO SCALE	DATE: 3/20/2003	DRAWN: GJH
CHECK: G. HARRON	APPR: G. HARRON	DATE: 3/20/2003
B-0-0.5-10002-0-300-LNINFO		



LEGEND

- BERTHOLD STATION EXPANSION PROJECT (JURISDICTIONAL)
- FIRE PROTECTION
- EXISTING
- █ DELINEATED WETLANDS

- NOTES:
1. LISTED SCALE IS FOR 22"x34" ("D" SIZE) DRAWINGS.
  2. A MINIMUM OF 3'-0" COVER MUST BE MAINTAINED ON ALL BURIED PIPING FROM EXISTING GRADE OR SUBGRADE.
  3. A MINIMUM OF 1'-6" CLEARANCE IS TO BE ALLOWED ON ALL PIPE CROSSINGS.

NO	REVISION	DATE	APPR	BY
D	ISSUED FOR REVIEW	12/14/11	AL	SAS
C	ISSUED FOR REVIEW	11/22/11	AL	SAS
B	ISSUED FOR REVIEW	11/15/11	AL	SAS
A	ISSUED FOR INTERNAL REVIEW	10/26/11	AL	SAS

**ENBRIDGE PIPELINES (NORTH DAKOTA) LLC**

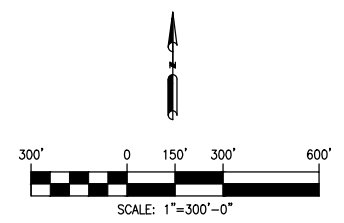
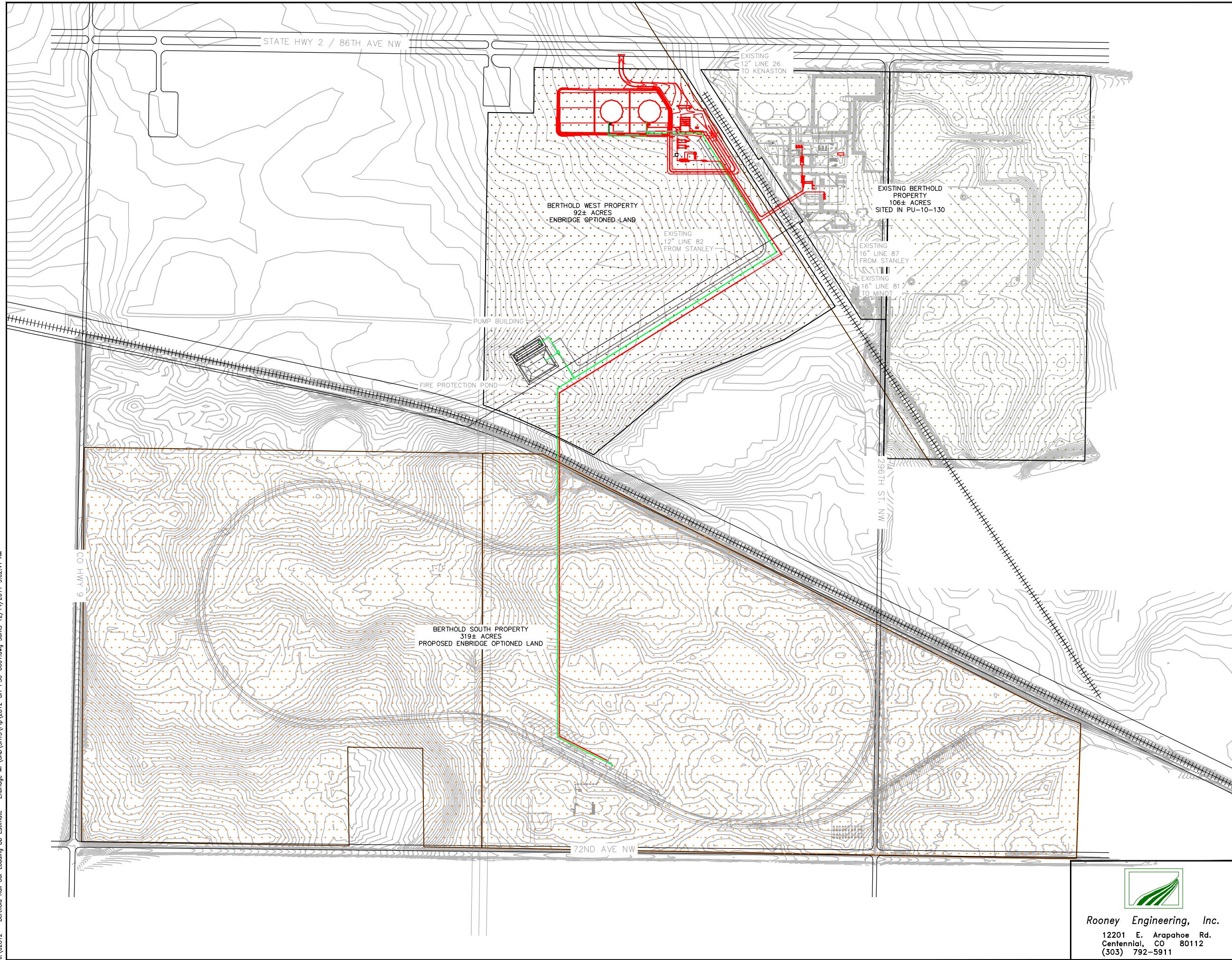
**BERTHOLD (ND) STATION**  
 BERTHOLD STATION EXPANSION PROJECT  
 SITE PLAN

PROJECT: 2812-ENBRIDGE		
SCALE: AS SHOWN	DATE: 10/26/11	DRAWN: SS
CHECK: AL	APPR: AL	DATE: (DATE)

DWG. NO. 2812-BH-PSC-0002REV-D

**Rooney Engineering, Inc.**  
 12201 E. Arapahoe Rd.  
 Centennial, CO 80112  
 (303) 792-5911

Exhibit A.2



- LEGEND**
- BERTHOLD STATION EXPANSION PROJECT (JURISDICTIONAL)
  - FIRE PROTECTION
  - EXISTING
  - EXISTING BERTHOLD PROPERTY 106± ACRES
  - BERTHOLD WEST PROPERTY 92± ACRES
  - BERTHOLD SOUTH PROPERTY 319± ACRES

E	ISSUED FOR REVIEW	12/14/11	AL	SAS
D	ISSUED FOR REVIEW	11/23/11	AL	SAS
C	ISSUED FOR REVIEW	11/22/11	AL	SAS
B	ISSUED FOR REVIEW	11/15/11	AL	SAS
NO	REVISION	DATE	APPR	BY

**ENBRIDGE PIPELINES (NORTH DAKOTA) LLC**

**BERTHOLD (ND) STATION**  
 BERTHOLD STATION EXPANSION PROJECT  
 SITE PLAN (WITH TOPO)

PROJECT: 2812-ENBRIDGE		
SCALE: AS SHOWN	DATE: 10/25/11	DRAWN: SS
CHECK: AL	APPR: AL	DATE: (DATE)

**DWG. NO. 2812-BH-PSC-0001REV-E**



**Rooney Engineering, Inc.**  
 12201 E. Arapahoe Rd.  
 Centennial, CO 80112  
 (303) 792-5911

J:\02812 - Berthold Rail Car Loading BD Estimate - Enbridge.MP\CAD\SHTS\Plp\_2812-BH-PSC-0001.dwg Soms 12/14/2011 9:02:41 AM