

SUPERIOR REGION
BEMIDJI AREA

JOLIETTE
792.00

DONALSON
814.00

VIKING
847.91

PLUMMER
876.97

CLEARBROOK
909.10

MANITOBA, CANADA
NORTH DAKOTA, U.S.A.

LINE 4
36" & 48"

LINE 3
34"

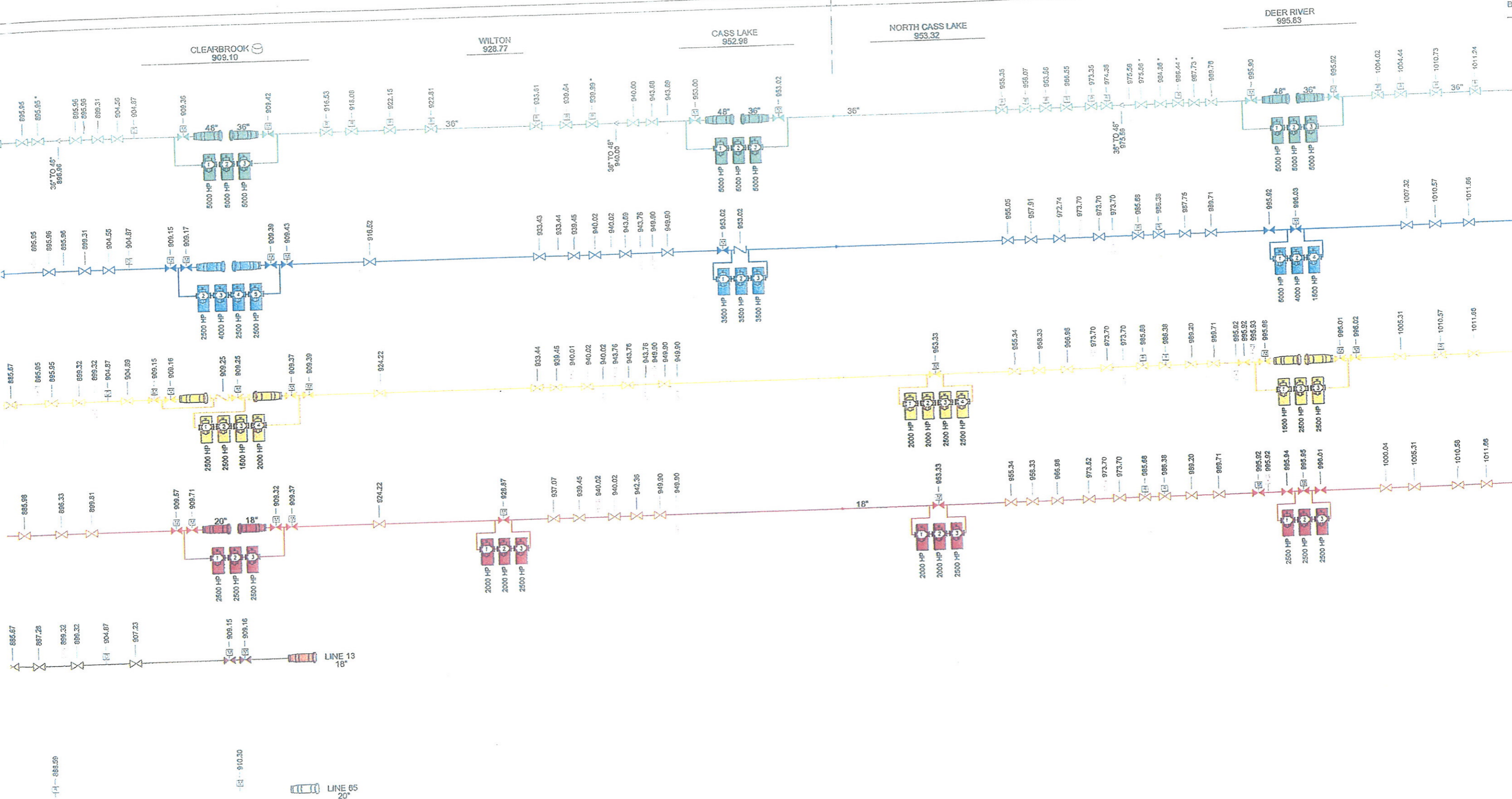
LINE 2
26"

LINE 1
20" & 18"

LINE 13
18"

LINE 65
20"

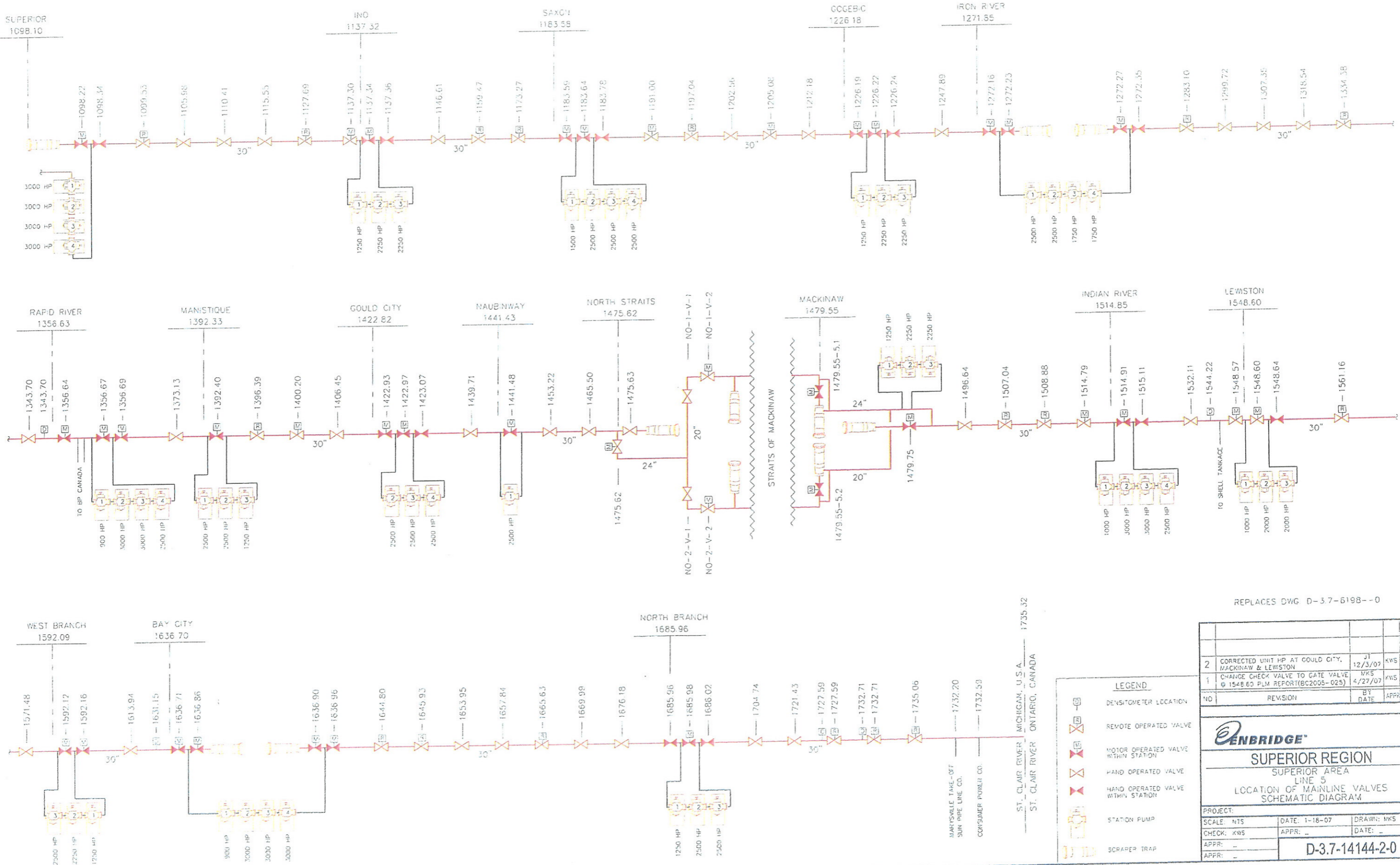
LINES 4, 3, 2, 1, 13 & 65



LINE 13
18"

LINE 65
20"

LINE 5



LEGEND

- DENSITOMETER LOCATION
- REMOTE OPERATED VALVE
- MOTOR OPERATED VALVE WITHIN STATION
- HAND OPERATED VALVE
- HAND OPERATED VALVE WITHIN STATION
- STATION PUMP
- SCRAPER TRAP

REPLACES DWG D-3.7-6198--0

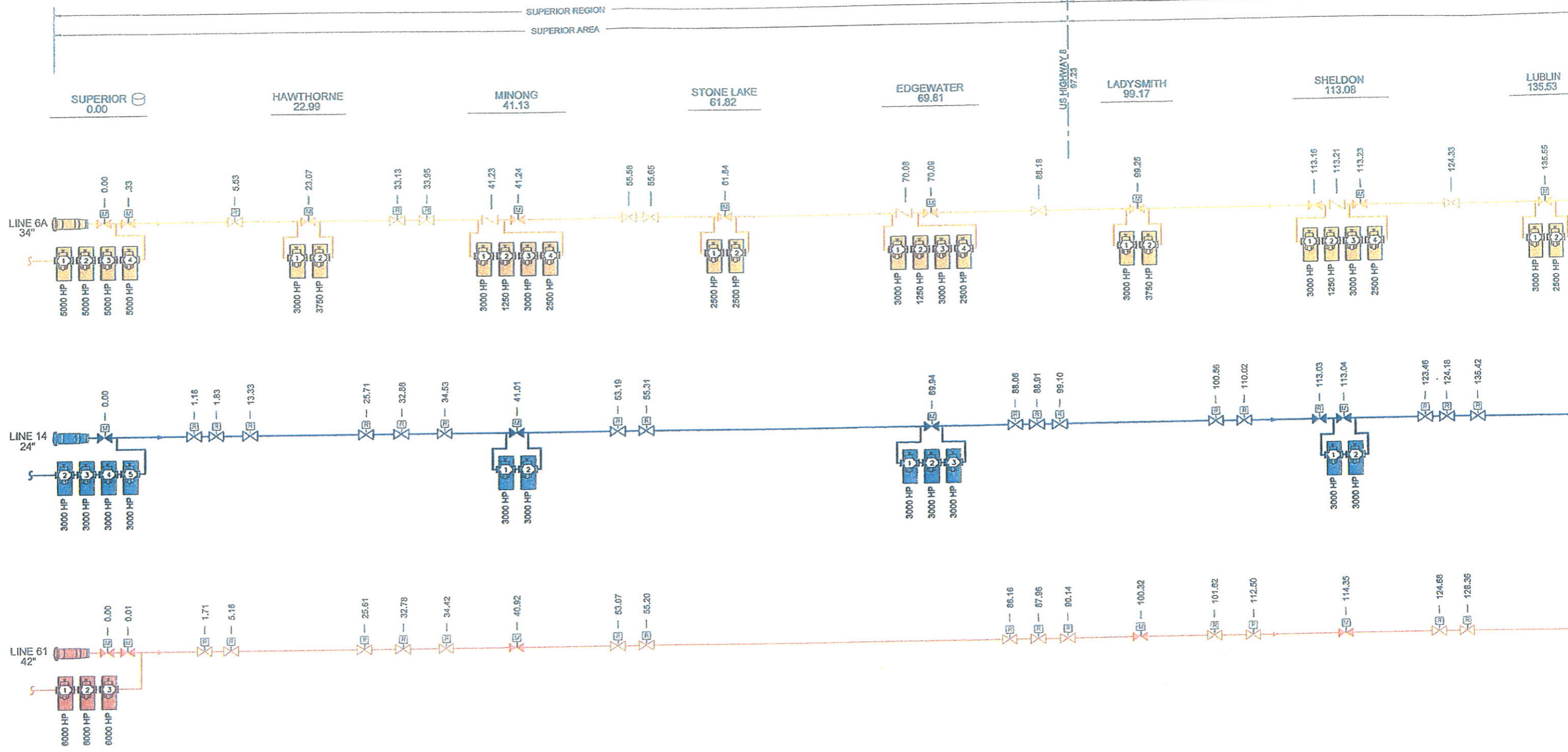
NO	REVISION	BY DATE	APPR
2	CORRECTED UNIT HP AT GOULD CITY, MACKINAW & LEWISTON	JT 12/3/07	KWS
1	CHANGE CHECK VALVE TO GATE VALVE	MKS 4/27/07	KWS
<p>ENBRIDGE</p> <p>SUPERIOR REGION</p> <p>SUPERIOR AREA</p> <p>LINE 5</p> <p>LOCATION OF MAINLINE VALVES SCHEMATIC DIAGRAM</p>			
PROJECT:		DATE: 1-18-07	DRAWN: MKS
SCALE: NTS		APPR: _____	DATE: _____
CHECK: KWS		D-3.7-14144-2-0	
APPR: _____			
APPR: _____			

MANISVILLE TAKE-OFF
SUN PIPE LINE CO.

CONSUMER POWER CO.

ST. CLAIR RIVER, MICHIGAN, U.S.A. 1735.32

ST. CLAIR RIVER ONTARIO, CANADA



CHICAGO REGION

FORT ATKINSON AREA

DUBLIN
135.53

OWEN
148.76

MARSHFIELD
173.37

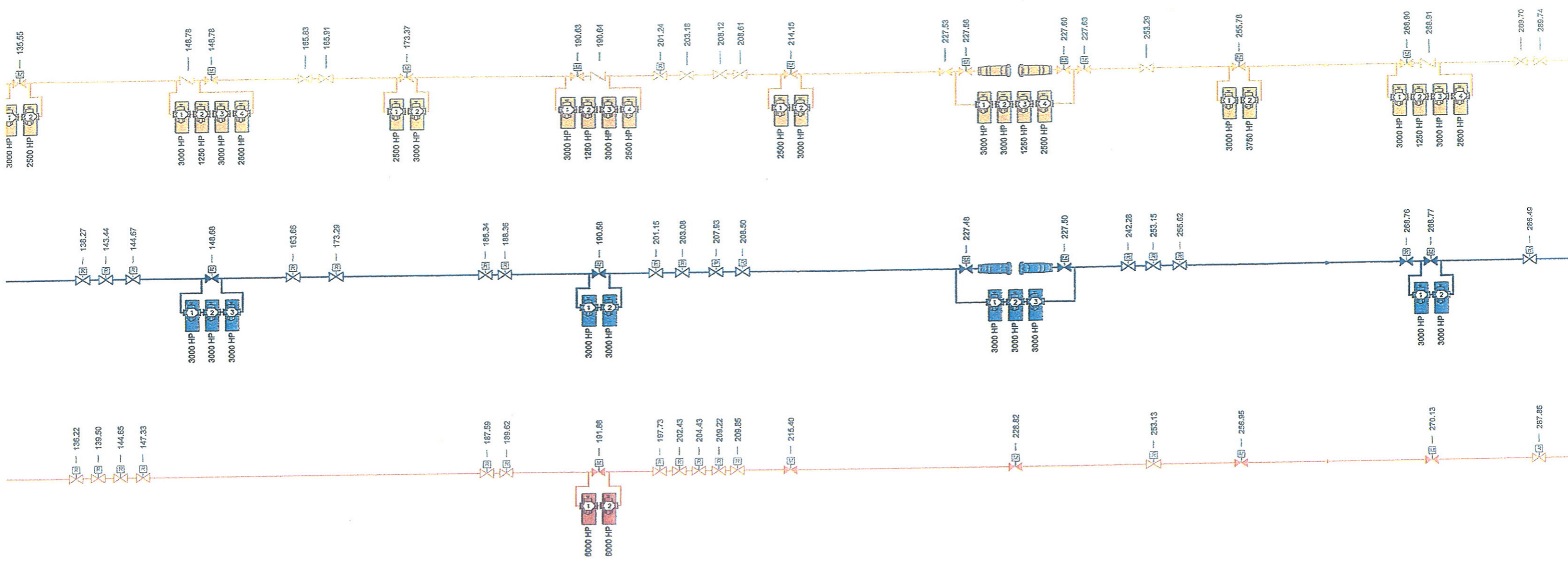
VESPER
190.59

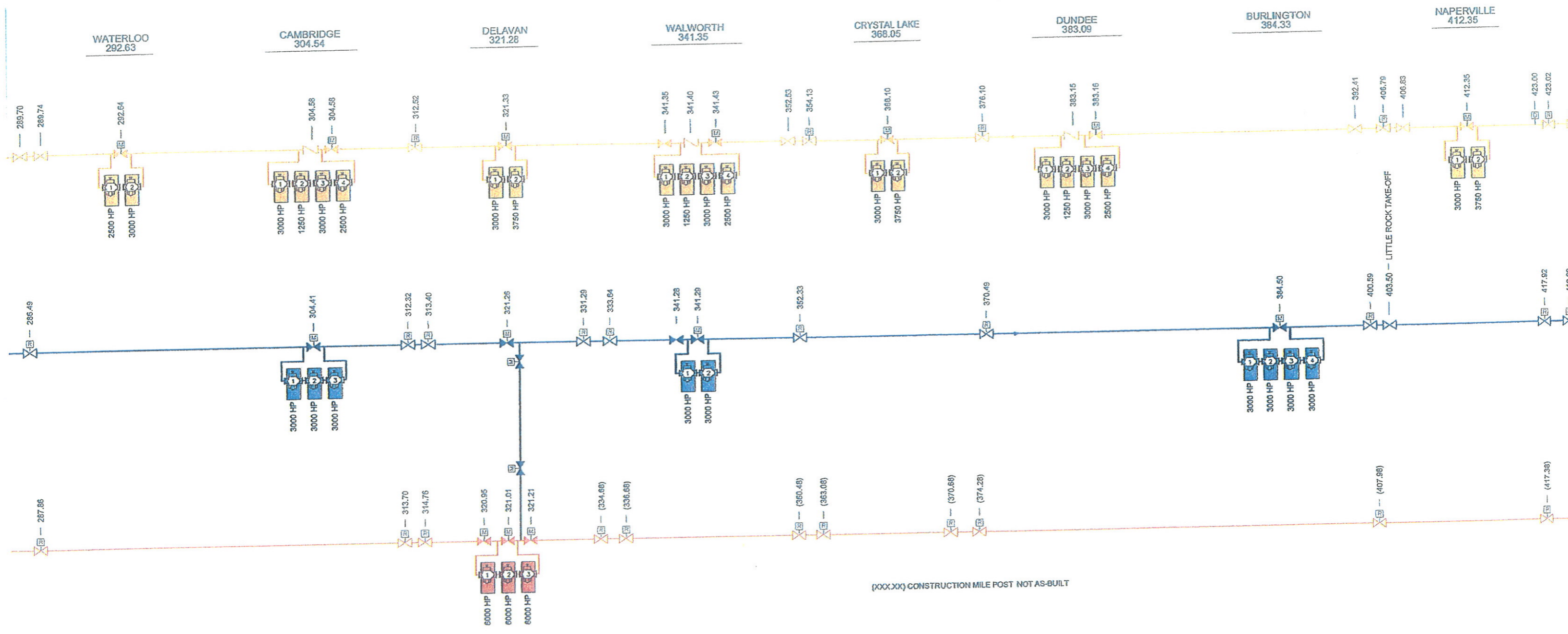
COTTONVILLE
214.12

ADAMS
227.53

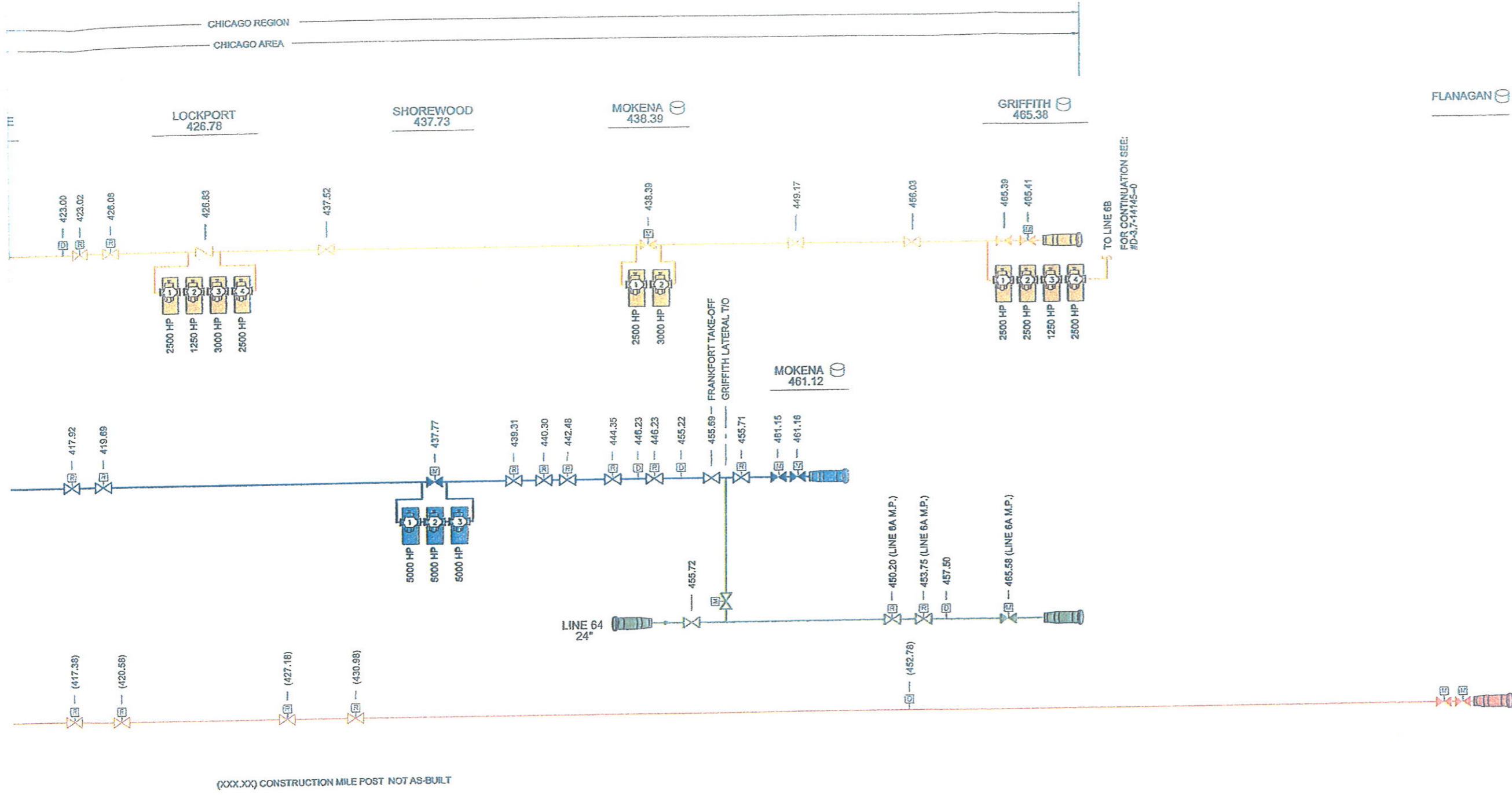
PORTAGE
255.73

RIO
268.62





(XXX.XX) CONSTRUCTION MILE POST NOT AS-BUILT



(XXX.XX) CONSTRUCTION MILE POST NOT AS-BUILT

LEGEND

	REMOTE OPERATED VALVE
	REMOTE OPERATED VALVE WITHIN STATION
	MOTOR OPERATED VALVE WITHIN STATION
	HAND OPERATED VALVE
	HAND OPERATED VALVE WITHIN STATION
	CHECK VALVE
	STATION PUMP
	TANKAGE
	DENSITOMETER LOCATION
	LINE 6A
	LINE 14
	LINE 61
	LINE 64
AREA CLASSIFICATION	
	STATION LIMITS

NOTES:
DUE TO THE COMPLEXITY OF STATION PIPING, NOT ALL TAKE-OFFS OR STATION VALVES WITHIN A STATION SHOW UP ON THIS DRAWING. FOR FURTHER DETAILS WITHIN THE STATION, SEE THE RESPECTIVE STATION GENERAL PIPING PLAN.

MILE POST/VALVE NUMBER MAY HAVE BEEN ADJUSTED TO FIT FIELD CONDITIONS AND DO NOT REFLECT EXACT STATIONING.

PROVISIONAL ONLY
04/27/09

REPLACES DRAWINGS			
0-3.7-14143-0	0-3.7-06201-0		
0-3.7-15013-0	0-3.7-12462-0		
0-3.7-15014-0	0-0.4-10200-0		
	0-0.4-10242-0		
2	COMBINED REPLACED DWG'S (NOTED), ADDED LINE 61 & REV'D/AS-BUILT INFO	JSL 4-27-09	SD
1	REVISED AS PER FRANKFORT & SHOREWOOD ADDITION	JSL 10-8-08	SD
NO	REVISION	BY DATE	APPR
ENBRIDGE			
SUPERIOR SOUTH SYSTEMS			
SUPERIOR, FORT ATKINSON & CHICAGO AREAS LINES 6A, 14, 61 & 64 MAINLINE SCHEMATIC DIAGRAM			
PROJECT:			
SCALE: NONE	DATE: 1-29-07	DRAWN: MKS	
CHECK: KWS	APPR:	DATE:	
APPR:	D-3.7-14142-02-0		
APPR: SD			