

MONTANA-DAKOTA UTILITIES CO.
88 MW COMBUSTION TURBINE
ESTIMATED EXPENDITURES
(000s)

	<u>Total</u>	<u>2011</u>	<u>2012</u>	<u>2013</u>	<u>2014</u>	<u>2015</u>
Combustion Turbine	\$54,440					
Transmission Interconnection	2,153					
Pipeline	18,407					
Total before AFUDC	\$75,000	\$1,766	\$19,276	\$37,663	\$10,670	\$5,625
AFUDC	10,629	23	650	3,261	4,899	1,796
Total	<u>\$85,629</u>	<u>\$1,789</u>	<u>\$19,926</u>	<u>\$40,924</u>	<u>\$15,569</u>	<u>\$7,421</u>

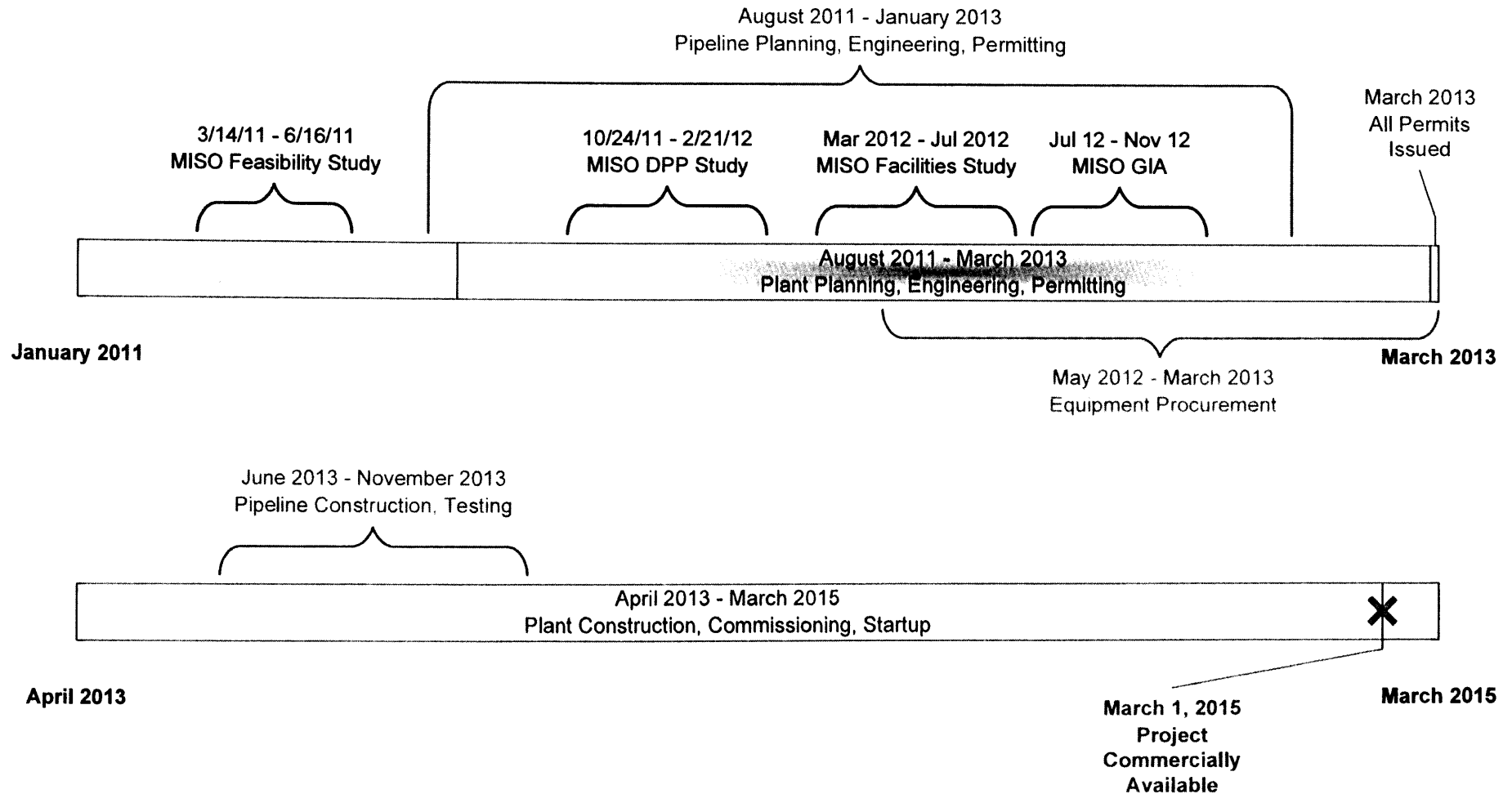
63 PU-11-396 Filed 01/10/2012 Pages: 2
MDU Exhibit 105
Montana-Dakota Utilities Co., a Division of MDU Resources Group, Inc.

77 PU-11-395 Filed 01/10/2012 Pages: 2
MDU Exhibit 105
Montana-Dakota Utilities Co., a Division of MDU Resources Group, Inc.

Timeline & Milestones

Future Unit near R.M. Heskett Station

88 MW Simple Cycle Combustion Turbine



The timeline and milestones are preliminary and subject to change during detailed engineering.

