



30 West Superior Street, Suite 200 Duluth, Minnesota 55802-2093 218.355.3232
www.alletecleanenergy.com

David R. Moller

218-355-3963
Fax: 218-355-3955
E-mail: dmoeller@allete.com

May 11, 2015

VIA EMAIL and U.S. MAIL

Mr. Darrell Nitschke
Executive Secretary
North Dakota Public Service Commission
State Capitol Building
600 E. Boulevard Ave., Dept. 408
Bismarck, ND 58505

RE: Thunder Spirit Wind, LLC - 150 MW Wind Energy Project
Case No. PU-11-601

Dear Mr. Nitschke:

Please find attached Thunder Spirit Wind Farm's May 1, 2015 Incident Report in the above-referenced case.

Yours truly,

David R. Moeller

DRM:sr
Enc.

101 PU-11-601 Filed: 5/12/2015 Pages: 4
Thunder Spirit Wind incident report

AN ALLETE CC

Allete, Inc.



THUNDER SPIRIT WIND FARM
Laceration to Employees Leg
Laydown Yard
Wanzek Construction Inc.

Over view: On May 1st 2015 at approximately 1:30 PM it was reported that a Wanzek operator operating a bull dozer sustained a cut to his leg. As the employee was getting out of the bull dozer, to check grade, he caught his right leg shin on the metal foot rest located near the door of the bull dozer. This resulted in a laceration approximately 5 inches long to the front right side of the employees shin. The employee was able to use paper towels to apply pressure to the wound and control the bleeding. The wound was properly dressed with gauze and the employee was transported to the local hospital where he received stitches and was discharge with no restrictions and is currently doing well.

1. Focus on Slips, Trips and Falls along with Maintaining Three Points of Contact have been an ongoing conversation on site.
2. Watching your foot placement while getting in and out of equipment and while walking out on site has been another focal point along with being aware of your surroundings to prevent struck by or caught by incidents.
3. Site conditions were sunny with winds approximately 10 to 15 MPH and temperatures around 70 degrees.
4. Pre Task Plan was in place.
5. Regular spot checks were being performed

BASIC UNDERLYING ROOT CAUSE

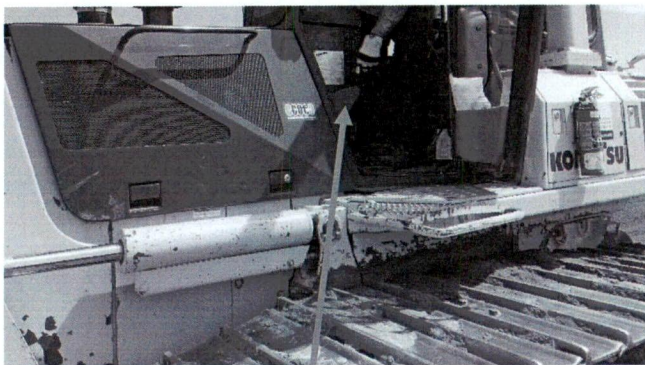
1. Not recognizing the protrusion of the foot rest in the entry/ exit of the bull dozer as a hazard.
2. Employee was not wearing pants of suitable material that could have provided a better protective layer between the metal foot rest and the leg.
3. The foot rest is made of metal and could have had a softer protective pad placed around the perimeter of the step or on it to possibly prevent such an incident.

ACTIONS TAKEN

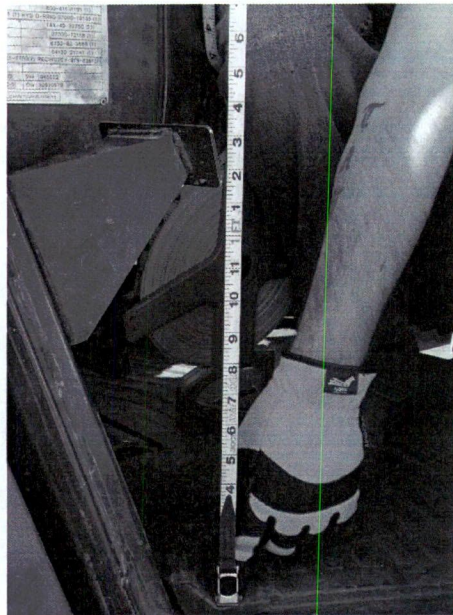
1. Continue to raise awareness of site conditions and recognizing items that could be a potential for tripping or restricting access and egress.
2. The foot rests were removed from the equipment and other equipment evaluated for potential hazards.
3. A stand down was performed on site by the Superintendent and Project Engineer. A discussion on the incident and the importance of noting issues and bringing them to our attention so that we can take appropriate corrective actions.
4. Pants of suitable material will only be allowed on site, no sweat pants.
5. Operator was evaluated and release without any further actions needed to be taken and will continue to be monitored by Wanzek Supervision.



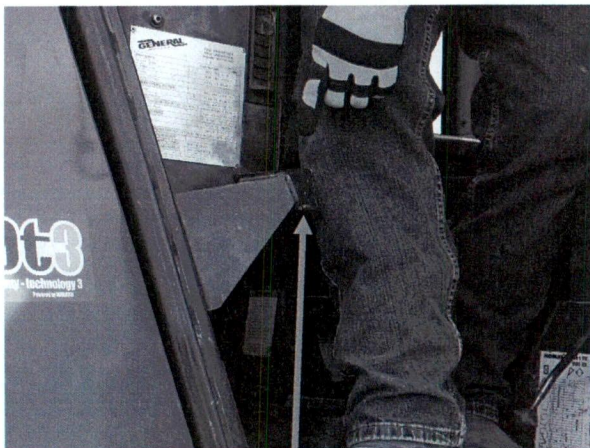
Pictures:



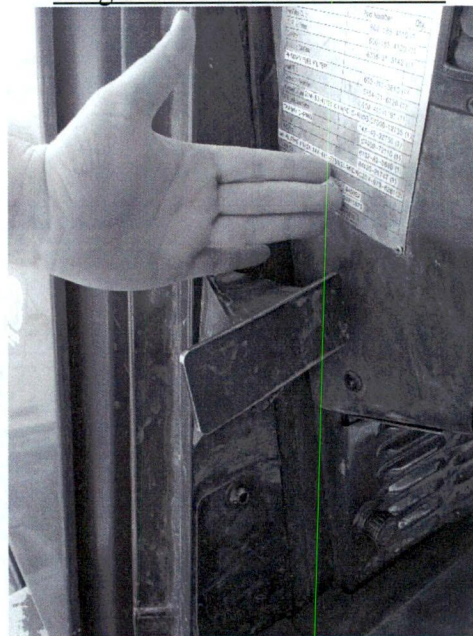
EE pointing out location of foot rest



Height of Foot Rest From Floor



Leg to Foot Rest Comparison



Hand to Foot Rest Comparison

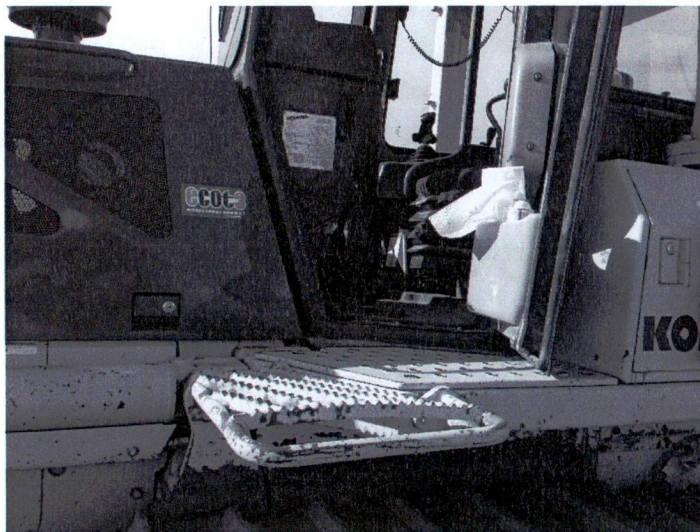


WANZEK

a MasTec company



Foot Rest Removed



Foot Rest Removed - Zoomed Out

