



**GRENORA STATION UPGRADE PROJECT
TABLE OF CONTENTS**

Exhibit D	Wetland Assessment and Biological Resources
Exhibit D.1	Carlson McCain Report – Wetland Delineation and Habitat Assessment and Raptor Survey
Exhibit D.2	COE Jurisdictional Determination



September 2, 2011

Mr. Paul Hartzheim
Merjent
615 First Avenue NE, Suite 425
Minneapolis, MN 55413

Re: **Wetland Delineation and Habitat Assessment Report – Grenora Station**

Dear Mr. Hartzheim,

Carlson McCain, Inc. is pleased to submit the “Wetland Delineation and Habitat Assessment Report – Grenora Station” for your review.

Please call me at 701-255-1475 if you have any questions or need additional informational.

Sincerely,

A handwritten signature in black ink that reads "Gregory W. Meyer".

Greg Meyer, MS
Ecologist

WETLAND DELINEATION AND HABITAT ASSESSMENT REPORT

Enbridge Pipelines (North Dakota) LLC - Grenora Station
Section 14, T159N, R103W
Williams County, North Dakota
Project #3525

Prepared for:

Merjent
Mr. Paul Hartzheim
615 First Avenue NE, Suite 425
Minneapolis, MN 55413

September 2, 2011



2718 Gateway Avenue, Suite 101
Bismarck, ND 58503
Tel 701-255-1475
Fax 701-255-1477
www.carlsonmccain.com

ENVIRONMENTAL • ENGINEERING • LAND SURVEYING

TABLE OF CONTENTS

1.0	SCOPE OF WORK	2
2.0	DELINEATION PROCEDURES.....	3
3.0	DELINEATION RESULTS	4
4.0	HABITAT ASSESSMENT AND RAPTOR SURVEY	6
4.1	Endangered Species	6
4.1.1	Gray Wolf (<i>Canis lupus</i>).....	6
4.1.2	Whooping Crane (<i>Grus americana</i>).....	7
4.2	Threatened Species / Critical Habitat	7
4.2.1	Piping Plover (<i>Charadrius melodus</i>)	7
4.3	Candidate Species.....	7
4.3.1	Sprague’s pipit (<i>Anthus spragueii</i>).....	7
4.4	Raptor Survey	8
5.0	REFERENCES	9

APPENDICES

Appendix A	Figures
Appendix B	USACE Wetland Determination Data Forms
Appendix C	Project Area Photographs

1.0 SCOPE OF WORK

This project delineated the extent of wetland areas and assessed potential habitat of endangered, threatened and raptor species within and adjacent to the proposed Grenora Station (Project Area) in Williams County, North Dakota (**Appendix A, Figure 1**). The Project Area comprises the northeast quarter of Section 14, T159N, R103W. The Project Area is located near Grenora, North Dakota. A Truck Unloading Facility is proposed to be developed in the Project Area.

The Project Area consists of an agricultural field with rolling topography and is approximately 150 acres in size (**Appendix A, Figures 2 and 3**). Wheat is currently planted on the site. Numerous wetlands are located consisting of intermittent drainages and isolated depressions.

The project is located within the Brush Creek Closed Basin (10060007) Hydrologic Unit Code (HUC).

The wetland field delineation and habitat assessment was conducted August 24, 2011, by Greg Meyer, Ecologist, Carlson McCain, Inc.

2.0 DELINEATION PROCEDURES

The wetland field delineation was conducted in accordance with the U.S. Army Corps of Engineers (USACE) 1987 *Wetland Delineation Manual* and the *Regional Supplement to the Corps of Engineers Wetland Delineation Manual: Great Plains Region (Version 2.0)* (Manual).

Wetland areas were systematically evaluated by using numerous observation points to define their boundaries. The frequency of observation points was increased in transitional areas between uplands and lower areas to accurately identify wetland boundaries based on soils, vegetation, hydrology, and landscape. Boundaries were digitally recorded with a Trimble GeoXH Global Positioning System (GPS).

Wetland areas were documented with a single or multiple observation points. Paired upland and wetland soil pits were evaluated for wetland areas. The Wetland Determination Data Form of the Great Plains Manual was completed for the observation points. Climatic conditions were considered typical prior to and during the evaluation.

Existing vegetation was classified using hydrophytic vegetation criteria outlined in the Manual and the *National List of Plant Species that Occur In Wetlands: 1996 National Summary* (Kartesz 1996), and *National list of plant species that occur in wetlands: North Plains (Region 4)* (Reed 1988). Hydric soil indicators were determined using the *Field Indicators of Hydric Soils in the United States; Guide for Identifying and Delineating Hydric Soils, Version 7.0* (USDA-NRCS 2010). Hydrology was determined on-site by observation of hydrologic indicators. Aerial photography was used to assist hydrologic determinations.

Field conditions and existing resource information were used to identify possible wetlands within the project areas. Williams County NAIP 2010, 2009, and 2005 aerial photographs, U.S. Fish and Wildlife Service National Wetland Inventory (USFWS 2011), and the digital soil survey of Williams County (USDA-NRCS 2011), were consulted prior to the wetland field delineation.

3.0 DELINEATION RESULTS

Eight wetlands were identified and delineated within the Project Area (**Appendix A, Figure 2**). Wetlands 1 and 5-8 are isolated depressions that are currently farmed around. Wetland 2 is an unnamed intermittent stream that flows west approximately two miles into Twin Lakes (located in Section 16, T159N, R103W). Wetlands 3 and 4 are depression wetlands that have shallow drains that may connect them to Wetland 2.

Barnyard grass (*Echinochloa crusgalli*), curled dock (*Rumex crispus*), and biennial wormwood (*Artemisia biennis*) are prevalent in the depression wetlands. Prairie cordgrass (*Spartina pectinata*), foxtail barley (*Hordeum jubatum*), and scattered patches of cattails (*Typha* spp.) are present in the intermittent streams that bisect the Project Area. Foxtail barley is the predominant vegetation in the areas of high salinity along the edge of the intermittent streams.

A description of the wetland type and documentation of the vegetation, hydrology, and hydric soils were recorded on the associated USACE Wetland Determination Data Forms (**Appendix B**) and are identified by observation point number (e.g., 1-w, 1-u). The observation points are identified by wetland soils (w) or upland soils (u).

Table 1 summarizes the evaluation criteria for the wetland within the Project Area. A total of 12.39 wetland acres were identified and delineated in the Project Area.

TABLE 1 - WETLANDS
 Wetland Identification, Location, and Characteristics (Field) Summary of the Project Area

Wetland ID	Observation Point	Acreage	NWI	Wetland Type
Wetland 1	1-w	0.39	PEMA	Depression (isolated)
Wetland 2	2a-w	9.58	PEMC	Intermittent Stream (connected)
	2b-w			
	2c-w			
	2d-w			
Wetland 3	3-w	0.86	PEMC	Depression (connected)
Wetland 4	4-w	0.74	PEMC	Depression (connected)
Wetland 5	5-w	0.34	PEMC	Depression (isolated)
Wetland 6	6-w	0.15	PEMA	Depression (isolated)
Wetland 7	7-w	0.05	PEMA	Depression (isolated)

Wetland Delineation and Habitat Assessment Report
Grenora Station
Williams County, North Dakota

Wetland ID	Observation Point	Acreage	NWI	Wetland Type
Wetland 8	8-w	0.27	PEMA	Depression (isolated)

4.0 HABITAT ASSESSMENT AND RAPTOR SURVEY

Agricultural fields comprise the majority of the habitat within and around the Project Area. Intermittent streams and depression wetlands are located in and around the Project Area. A native grassland is present in the area immediately west of the Project Area. Habitats were assessed within the Project Area and on surrounding lands within one-half mile of the Project Area.

Assessments for federally listed endangered, threatened, and candidate species were conducted by evaluating historic and present occurrences, and by determining if potential habitat exists within the Project Area. Determinations were made concerning direct and cumulative effects of the proposed activity on each species and their habitat. Determinations made for federally listed species are:

- No effect
- May affect, but is not likely to adversely affect
- May affect, and is likely to adversely affect
- Is likely to jeopardize a proposed species or adversely modify critical habitat
- Is not likely to jeopardize a proposed species or adversely modify critical habitat

Currently, five federally listed species have been documented in Williams County including interior least tern, whooping crane, pallid sturgeon, gray wolf, and piping plover. In addition, critical habitat for the piping plover is listed as present in the county (USFWS 2011a). Suitable habitat for the interior least tern and pallid sturgeon is limited to the Missouri River system and since none of this habitat is located in the Project Area these species will not be addressed in this report.

The Sprague's pipit has been determined to be a candidate species under the Endangered Species Act. No legal requirement exists to protect candidate species; however, the U.S. Fish and Wildlife Service (USFWS) considers this species to have significant value and worth protecting.

4.1 Endangered Species

4.1.1 Gray Wolf (*Canis lupus*)

Gray wolves (*Canis lupus*) historically ranged throughout North America. With the exception of Minnesota, Wisconsin, Michigan, Montana, Idaho, Washington, and Wyoming, the gray wolf is absent from the lower 48 states. Gray wolves have been documented in North Dakota since 1990; however, their presence in North Dakota is sporadic, consisting of occasional dispersing animals from Minnesota and Manitoba (USFWS 2008a). Gray wolf habitat varies from woodlands to grasslands, but they generally avoid populated areas and areas with high road densities (Johnson 1999).

Gray wolves were not observed during the habitat assessment and there is no potential habitat located in the Project Area. The proposed project will have *no effect* on this species at this time.

4.1.2 Whooping Crane (*Grus americana*)

Whooping cranes (*Grus americana*) nested in North Dakota in the 19th Century, and now only migrate through the state in the spring and fall. Along their migration route, whooping cranes use large shallow marshes for roosting and loafing while feeding in harvested grain fields. Twenty-five cranes were reported in the 2009 fall migration and twelve were reported in the 2010 spring migration through North Dakota (Stehn 2010).

Suitable habitat is within the Project Area. Whooping cranes may fly over, temporarily feed, or loaf in the area. Whooping cranes were not observed during the field survey. The proposed project is *not likely to adversely affect* this species at this time.

4.2 Threatened Species / Critical Habitat

4.2.1 Piping Plover (*Charadrius melodus*)

North Dakota's population of piping plovers (*Charadrius melodus*) was 496 breeding pairs in 1991 and was reduced to 399 breeding pairs by 1996. Approximately 75% of piping plovers in North Dakota nest on prairie alkali lakes, and 25% use the Missouri River (USFWS 2011c). The USFWS designates the piping plover as Threatened in North Dakota and with specific areas in Williams County designated as Critical Habitat (USFWS 2010). Nest locations are most likely selected due to their sparse vegetation. In North Dakota, they nest on alkali lakes, sandy relatively narrow beaches (300 - 1,200 feet wide), and barren river sandbars. The nearest piping plover designated Critical Habitat is Twin Lakes located approximately two miles west of the Project Area in Section 16, T159N, R103W.

There is no suitable nesting habitat within the Project Area. No individuals were sighted during the habitat assessment. The proposed project is *not likely to adversely affect* this species at this time and will have *no effect* on the designated critical habitat.

4.3 Candidate Species

4.3.1 Sprague's pipit (*Anthus spragueii*)

The Sprague's pipit is a ground nesting bird that breeds and winters on open grasslands. It feeds mostly on insects and spiders and some seeds. The Sprague's pipit is closely tied with native prairie habitat and breeds in the north-central United States in Minnesota, Montana, North Dakota and South Dakota as well as south-central Canada. Between 1996 and 2007, the population of Sprague's pipits in North Dakota has declined by 2% (Sauer et. al. 2008). During the breeding season, Sprague's pipits prefer large patches of native grassland with a minimum size requirement thought to be approximately 145 ha (358.3 ac). The species prefers to breed in well-drained, open grasslands and avoids grasslands with excessive shrubs. Preferred grass height is estimated to be between 10 and 30 cm. They may avoid roads, trails, and habitat edges.

Sprague's pipit were not observed during the habitat assessment; however, a small area (160 acres) of native grassland and potential habitat is located adjacent to the Project Area in the NW1/4 of Section 14, T159N, R103W. The proposed project is *not likely to adversely affect* this species at this time.

4.4 Raptor Survey

No raptors or raptor nests were observed during the habitat assessment. Nesting habitat is limited to a shelterbelt surrounding an active farmstead that is located approximately 0.45 miles from the existing Grenora Station facility.

5.0 REFERENCES

- Cowardin, L. M., V. Carter, F. C. Golet, E. T. LaRoe. 1979. *Classification of wetlands and deepwater habitats of the United States*. U.S. Department of the Interior, Fish and Wildlife Service, Washington, D.C. Jamestown, ND: Northern Prairie Wildlife Research Center Online. <http://www.npwrc.usgs.gov/resource/wetlands/classwet/index.htm> (Version 04DEC1998) >Accessed July 2011.
- Environmental Laboratory. 1987. *Corp of Engineers Wetlands Delineation Manual*. Wetlands Research Program. Technical Report Y-87-1. Department of the Army, Waterways Experiment Station, US Army Corp of Engineers, Vicksburg, Mississippi, USA.
- Environmental Laboratory. 2010. *Regional Supplement to the Corps of Engineers Wetland Delineation Manual: Great Plains Region (Version 2.0)*. U.S. Army Corps of Engineers, U.S. Army Engineer Research and Development Center Vicksburg, Mississippi, USA.
- Johnson, K.D. 1999. Return of the Wolf? Northern Prairie Wildlife Research Center. Jamestown, ND. North Dakota Outdoors 61(8):14-16. <http://www.npwrc.usgs.gov/resource/mammals/wolfrtrn/index.htm> (Version 05MAY99).
- Kartesz, J.T. 1996. *National List of Plant Species that Occur In Wetlands: 1996 National Summary*. Biota of North America Program. US Fish and Wildlife Service. <http://www.fws.gov/new/bha/list96.html> > Accessed July 2011.
- Reed, P.B., Jr. 1988. *National list of plant species that occur in wetlands: North Plains (Region 4)*. U.S. Fish and Wildlife Service Biological Report 88(26.4). 64pp.
- Sauer, J. R., J. E. Hines, and J. Fallon. 2008. *The North American Breeding Bird Survey, results and analysis 1966–2007*. Version 5.15. 2008.
- Stehn, T. 2010. *Whooping Crane Recovery Activities, October 2009 – September 2010*. Department of the Interior, US Fish and Wildlife Service, Whooping Crane Coordinator Report.
- Stevens, O.A. 1963. *Handbook of North Dakota Plants*. North Dakota Institute for Regional Studies, Fargo, North Dakota, USA.
- USDA-NRCS. 2010. *Field Indicators of Hydric Soils in the United States—Guide for Identifying and Delineating Hydric Soils, Version. 7.0* in G.W. Hurt, L.M. Vasilas, and C.V. Noble, editors. USDA-NRCS in cooperation with the National Technical Committee for Hydric Soils.
- USDA-NRCS. 2011. Soil Survey of Williams County, North Dakota. <http://websoilsurvey.nrcs.usda.gov/app> Accessed August 2011.

USFWS. 2011. United States Fish and Wildlife Service. National Wetlands Inventory.
<http://wetlandsfws.er.usgs.gov/NWI/> Accessed August 2011.

USFWS. 2011a. County occurrence of Endangered, Threatened and Candidate species and designated critical habitat in North Dakota. Department of the Interior, US Fish and Wildlife Service Washington, DC 20240 <http://www.fws.gov/northdakotafieldoffice/SEtable.pdf> Revised September 2010.

USFWS. 2011b. Least Tern (*Sterna antillarum*). Department of the Interior, US Fish and Wildlife Service, North Dakota Field Office, Mountain-Prairie Region.
http://www.fws.gov/northdakotafieldoffice/endspecies/species/least_tern.htm Last updated March 14, 2011.

USFWS. 2011c. Piping Plover (*Charadrius melodus*). Department of the Interior, US Fish and Wildlife Service, North Dakota Field Office, Mountain-Prairie Region.
http://www.fws.gov/northdakotafieldoffice/endspecies/species/piping_plover.htm Last updated March 14, 2011.

USFWS. 2008a. Gray Wolf (*Canis lupus*). Department of the Interior, US Fish and Wildlife Service, North Dakota Field Office, Mountain-Prairie Region.
http://www.fws.gov/northdakotafieldoffice/endspecies/species/gray_wolf.htm

APPENDIX A

Figures

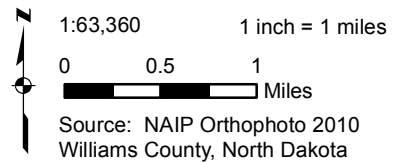


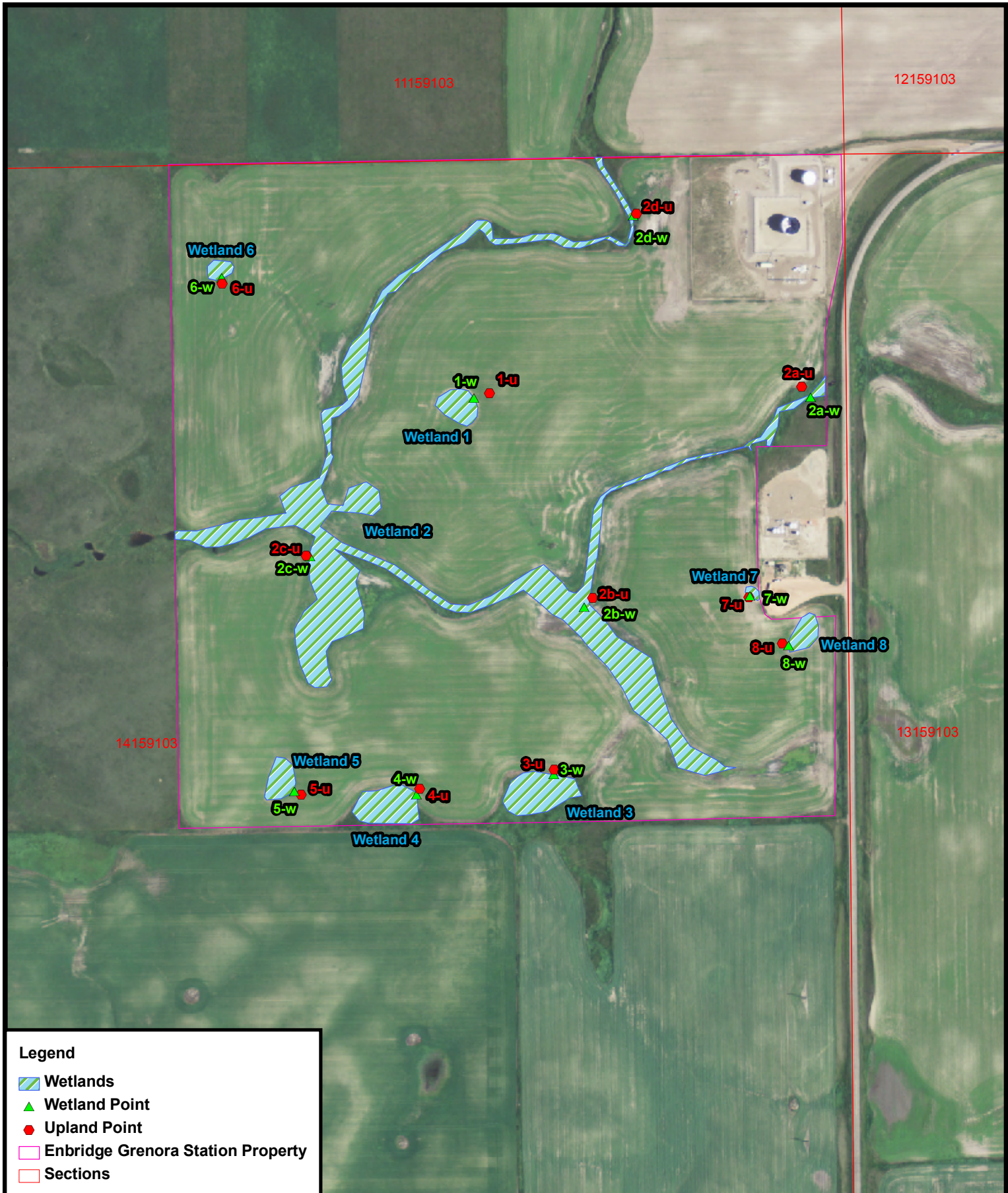
Legend

Enbridge Grenora Station Property



Figure 1
GENERAL LOCATION
 Grenora Station
 Enbridge Pipelines (North Dakota) LLC





Legend

- Wetlands
- Wetland Point
- Upland Point
- Enbridge Grenora Station Property
- Sections

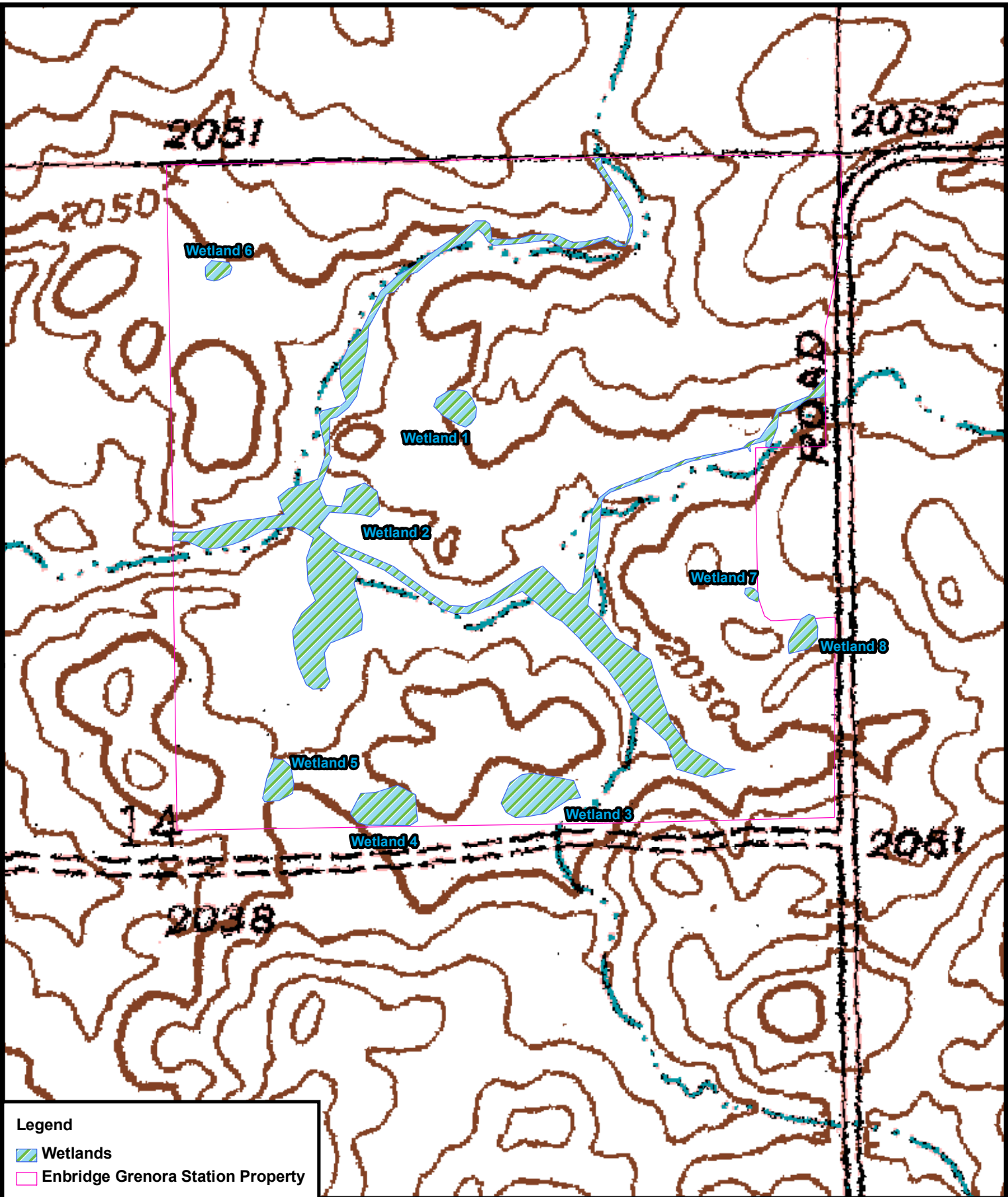
**Carlson
McCain**
ENVIRONMENTAL • ENGINEERING • SURVEYING

Figure 2
DELINEATED WETLANDS
 Grenora Station
 Enbridge Pipelines (North Dakota) LLC

1:6,000
1 inch = 500 feet

0 250 500
 Feet

Source: NAIP Orthophoto 2010
 Williams County, North Dakota



Legend

- Wetlands
- Enbridge Grenora Station Property



Figure 3
TOPOGRAPHY
 Grenora Station
 Enbridge Pipelines (North Dakota) LLC

1:6,000 1 inch = 500 feet
 0 250 500
 Feet
 Source: USGS Topographical Quadrangle
 Grenora (48103e8), 1948

APPENDIX B

USACE Wetland Determination Data Forms

WETLAND DETERMINATION DATA FORM – Great Plains Region

Project Site: Grenora Station City/County: Williams Sampling Date: 8/24/2011
 Applicant/Owner: Enbridge State: ND Sampling Point: 1-w
 Investigator(s): GWM Section, Township, Range: 14, 159, 103
 Landform (hillslope, terrace, etc.): depression Local relief (concave, convex, none): Concave Slope (%): 1
 Subregion (LRR): E Lat: 48.602132N Long: -103.955879W Datum: NAD 83
 Soil Map Unit Name: 2032 - Zahl-Williams loams 6 to 9 percent slopes NWI classification: none

Are climatic / hydrologic conditions on the site typical for this time of year? Yes No (If no, explain in Remarks.)
 Are Vegetation , Soil , or Hydrology , significantly disturbed? Are "Normal Circumstances" present? Yes No
 Are Vegetation , Soil , or Hydrology , naturally problematic? (If needed, explain any answers in Remarks.)

SUMMARY OF FINDINGS – Attach site map showing sampling point locations, transects, important features, etc.

Hydrophytic Vegetation Present?	Yes <input checked="" type="checkbox"/>	No <input type="checkbox"/>	Is the Sampling Area within a Wetland? Yes <input checked="" type="checkbox"/> No <input type="checkbox"/>
Hydric Soil Present?	Yes <input checked="" type="checkbox"/>	No <input type="checkbox"/>	
Wetland Hydrology Present?	Yes <input checked="" type="checkbox"/>	No <input type="checkbox"/>	
Remarks: Depression wetland that is cultivated around.			

VEGETATION – Use scientific names of plants

Tree Stratum (Plot Size: _____)	Absolute % Cover	Dominant Species?	Indicator Status	Dominance Test Worksheet:
1. _____	_____	_____	_____	Number of Dominant Species That Are OBL, FACW, or FAC: <u>2</u> (A) Total Number of Dominant Species Across All Strata: <u>3</u> (B) Percent of Dominant Species That Are OBL, FACW, or FAC: <u>67</u> (A/B)
2. _____	_____	_____	_____	
3. _____	_____	_____	_____	
4. _____	_____	_____	_____	
= Total Cover				Prevalence Index worksheet: Total % Cover of: Multiply by: OBL species _____ x1 = _____ FACW species _____ x2 = _____ FAC species _____ x3 = _____ FACU species _____ x4 = _____ UPL species _____ x5 = _____ Column Totals: _____ (A) _____ (B) Prevalence Index = B/A = _____
<u>Sapling/Shrub Stratum</u> (Plot Size: _____)				
1. _____	_____	_____	_____	
2. _____	_____	_____	_____	
3. _____	_____	_____	_____	
4. _____	_____	_____	_____	
5. _____	_____	_____	_____	
= Total Cover				
<u>Herb Stratum</u> (Plot Size: <u>5'</u>)				Hydrophytic Vegetation Indicators: <input checked="" type="checkbox"/> 1 – Rapid Test for Hydrophytic Vegetation _____ 2 - Dominance Test is >50% _____ 3 – Prevalence Index is ≤3.0 ¹ _____ 4 - Morphological Adaptations ¹ (Provide supporting data in Remarks or on a separate sheet) _____ Problematic Hydrophytic Vegetation ¹ (Explain) ¹ Indicators of hydric soil and wetland hydrology must be present, unless disturbed or problematic.
1. <u>Echinochloa crusgalli</u>	<u>30</u>	<u>yes</u>	<u>FACW</u>	
2. <u>Artemisia biennis</u>	<u>40</u>	<u>yes</u>	<u>FACW</u>	
3. <u>Setaria glauca</u>	<u>20</u>	<u>yes</u>	<u>FACU</u>	
4. _____	_____	_____	_____	
5. _____	_____	_____	_____	
6. _____	_____	_____	_____	
7. _____	_____	_____	_____	
8. _____	_____	_____	_____	
9. _____	_____	_____	_____	
10. _____	_____	_____	_____	
<u>90</u>			= Total Cover	
<u>Woody Vine Stratum</u> (Plot Size: _____)				
1. _____	_____	_____	_____	
2. _____	_____	_____	_____	
_____			= Total Cover	
% Bare Ground in Herb Stratum <u>10</u>				Hydrophytic Vegetation Present? Yes <input checked="" type="checkbox"/> No <input type="checkbox"/>

Remarks:
Typha angustifolia and Alisma plantago-aquatica in the interior of the wetland.

SOIL

Sampling Point: 1-w

Profile Description: (Describe to the depth needed to document the indicator or confirm the absence of indicators.)

Depth (inches)	Matrix		Redox Features				Texture	Remarks
	Color (moist)	%	Color (Moist)	%	Type ¹	Loc ²		
0-3	10YR 3/1	100	_____	_____	_____	_____	sil	_____
3-11	10 YR 3/1	95	10YR 4/6	5	d	m	sil	_____
11-13	10YR 2/1	100	_____	_____	_____	_____	sil	buried horizon
13-18+	2.5Y 4/1	80	7.5YR 5/6	20	c	m	sil	_____
_____	_____	_____	_____	_____	_____	_____	_____	_____
_____	_____	_____	_____	_____	_____	_____	_____	_____
_____	_____	_____	_____	_____	_____	_____	_____	_____
_____	_____	_____	_____	_____	_____	_____	_____	_____

¹Type: C= Concentration, D=Depletion, RM=Reduced Matrix, CS=Covered or Coated Sand Grains. ²Location: PL=Pore Lining, M=Matrix

Hydric Soil Indicators: (Applicable to all LRRs, unless otherwise noted.)

- Histosol (A1)
- Histic Epipedon (A2)
- Black Histic (A3)
- Hydrogen Sulfide (A4)
- Stratified Layers (A5) (LRR F)
- 1 cm Muck (A9) (LRR F, G, H)
- Depleted Below Dark Surface (A11)
- Thick Dark Surface (A12)
- Sandy Mucky Mineral (S1)
- 2.5 CM Mucky Peat or Peat (S2)(LRR G, H)
- 5 cm Mucky Peat or Peat (S3) (LRR F)
- Sandy Gleyed Matrix (S4)
- Sandy Redox (S5)
- Stripped Matrix (S6)
- Loamy Mucky Mineral (F1)
- Loamy Gleyed Matrix (F2)
- Depleted Matrix (F3)
- Redox Dark Surface (F6)
- Depleted Dark Surface (F7)
- Redox Depressions (F8)
- High Plains Depressions (F16)

Indicators for Problematic Hydric Soils³:

- 1 cm Muck (A9) (LRR I, J)
- Coast Prairie Redox (A16) (LRR F, G, H)
- Dark Surface (S7) (LRR G)
- High Plains Depressions (F16)
- (LRR H outside of MLRA 72 & 73)**
- Reduced Vertic (F18)
- Red Parent Material (TF2)
- Very Shallow Dark Surface (TF 12)
- Other (Explain in Remarks)

³Indicators of hydrophytic vegetation and wetland hydrology must be present, unless disturbed or problematic.

Restrictive Layer (if present):

Type: _____
Depth (Inches): _____

Hydric Soils Present? Yes No

Remarks:

HYDROLOGY

Wetland Hydrology Indicators:

Primary Indicators (minimum of one required; check all that apply)

Secondary Indicators (2 or more required)

- | | | |
|--|---|---|
| <ul style="list-style-type: none"> <input checked="" type="checkbox"/> Surface Water (A1) <input checked="" type="checkbox"/> High Water Table (A2) <input checked="" type="checkbox"/> Saturation (A3) <input type="checkbox"/> Water Marks (B1) <input type="checkbox"/> Sediment Deposits (B2) <input type="checkbox"/> Drift Deposits (B3) <input type="checkbox"/> Algal Mat or Crust (B4) <input type="checkbox"/> Iron Deposits (B5) <input checked="" type="checkbox"/> Inundation Visible on Aerial Imagery (B7) <input type="checkbox"/> Water-Stained Leaves (B9) | <ul style="list-style-type: none"> <input type="checkbox"/> Salt Crust (B11) <input type="checkbox"/> Aquatic Invertebrates (B13) <input type="checkbox"/> Hydrogen Sulfide Odor (C1) <input type="checkbox"/> Dry Season Water Table (C2) <input type="checkbox"/> Oxidized Rhizospheres along Living Roots (C3) (where not tilled) <input type="checkbox"/> Presence of Reduced Iron (C4) <input type="checkbox"/> Thin Muck Surface (C7) <input type="checkbox"/> Other (Explain in Remarks) | <ul style="list-style-type: none"> <input type="checkbox"/> Surface Soil Cracks (B6) <input type="checkbox"/> Sparsely Vegetated Concave Surface (B8) <input type="checkbox"/> Drainage Patterns (B10) <input type="checkbox"/> Oxidized Rhizospheres along Living Roots (C3) (where tilled) <input type="checkbox"/> Crayfish Burrows (C8) <input checked="" type="checkbox"/> Saturation Visible on Aerial Imagery (C9) <input checked="" type="checkbox"/> Geomorphic Position (D2) <input type="checkbox"/> FAC-Neutral Test (D5) <input type="checkbox"/> Frost-Heave Hummocks (D7) (LRR F) |
|--|---|---|

Field Observations:

Surface Water Present? Yes No Depth (inches): 8
 Water Table Present? Yes No Depth (inches): 0
 Saturation Present? (includes capillary fringe) Yes No Depth (inches): 0

Wetland Hydrology Present? Yes No

Describe Recorded Data (stream gauge, monitoring well, aerial photos, previous inspections), if available:

Remarks:

WETLAND DETERMINATION DATA FORM – Great Plains Region

Project Site: Grenora Station City/County: Williams Sampling Date: 8/24/2011
 Applicant/Owner: Enbridge State: ND Sampling Point: 1-u
 Investigator(s): GWM Section, Township, Range: 14, 159, 103
 Landform (hillslope, terrace, etc.): toeslope Local relief (concave, convex, none): plane Slope (%): 3
 Subregion (LRR): E Lat: 48.602181N Long: -103.955627W Datum: NAD 83
 Soil Map Unit Name: 2032 - Zahl-Williams loams 6 to 9 percent slopes NWI classification: none

Are climatic / hydrologic conditions on the site typical for this time of year? Yes No (If no, explain in Remarks.)
 Are Vegetation , Soil , or Hydrology , significantly disturbed? Are "Normal Circumstances" present? Yes No
 Are Vegetation , Soil , or Hydrology , naturally problematic? (If needed, explain any answers in Remarks.)

SUMMARY OF FINDINGS – Attach site map showing sampling point locations, transects, important features, etc.

Hydrophytic Vegetation Present?	Yes <input type="checkbox"/>	No <input checked="" type="checkbox"/>	Is the Sampling Area within a Wetland? Yes <input type="checkbox"/> No <input checked="" type="checkbox"/>
Hydric Soil Present?	Yes <input type="checkbox"/>	No <input checked="" type="checkbox"/>	
Wetland Hydrology Present?	Yes <input type="checkbox"/>	No <input checked="" type="checkbox"/>	
Remarks: upland comparison point above hydric boundary			

VEGETATION – Use scientific names of plants

Tree Stratum (Plot Size: _____)	Absolute % Cover	Dominant Species?	Indicator Status	Dominance Test Worksheet:
1. _____	_____	_____	_____	Number of Dominant Species That Are OBL, FACW, or FAC: <u>0</u> (A) Total Number of Dominant Species Across All Strata: <u>1</u> (B) Percent of Dominant Species That Are OBL, FACW, or FAC: <u>0</u> (A/B)
2. _____	_____	_____	_____	
3. _____	_____	_____	_____	
4. _____	_____	_____	_____	
= Total Cover				Prevalence Index worksheet: Total % Cover of: Multiply by: OBL species _____ x1 = _____ FACW species _____ x2 = _____ FAC species _____ x3 = _____ FACU species _____ x4 = _____ UPL species _____ x5 = _____ Column Totals: _____ (A) _____ (B) Prevalence Index = B/A = _____
Sapling/Shrub Stratum (Plot Size: _____)				
1. _____	_____	_____	_____	
2. _____	_____	_____	_____	
3. _____	_____	_____	_____	
4. _____	_____	_____	_____	
5. _____	_____	_____	_____	
= Total Cover				
Herb Stratum (Plot Size: 5')				
1. <u>Setaria glauca</u>	<u>90</u>	<u>yes</u>	<u>FACU</u>	
2. _____	_____	_____	_____	
3. _____	_____	_____	_____	
4. _____	_____	_____	_____	
5. _____	_____	_____	_____	
6. _____	_____	_____	_____	
7. _____	_____	_____	_____	
8. _____	_____	_____	_____	
9. _____	_____	_____	_____	
10. _____	_____	_____	_____	
= Total Cover				
Woody Vine Stratum (Plot Size: _____)				
1. _____	_____	_____	_____	
2. _____	_____	_____	_____	
= Total Cover				
% Bare Ground in Herb Stratum <u>10</u>				
Hydrophytic Vegetation Present? Yes <input type="checkbox"/> No <input checked="" type="checkbox"/>				
Remarks:				

SOIL

Sampling Point: 1-u

Profile Description: (Describe to the depth needed to document the indicator or confirm the absence of indicators.)

Depth (inches)	Matrix		Redox Features				Texture	Remarks
	Color (moist)	%	Color (Moist)	%	Type ¹	Loc ²		
0-7	10YR 3/2	100	_____	_____	_____	_____	sil	_____
7-12+	10 YR 3/3	100	_____	_____	_____	_____	sil	_____
_____	_____	_____	_____	_____	_____	_____	_____	_____
_____	_____	_____	_____	_____	_____	_____	_____	_____
_____	_____	_____	_____	_____	_____	_____	_____	_____
_____	_____	_____	_____	_____	_____	_____	_____	_____

¹Type: C= Concentration, D=Depletion, RM=Reduced Matrix, CS=Covered or Coated Sand Grains. ²Location: PL=Pore Lining, M=Matrix

Hydric Soil Indicators: (Applicable to all LRRs, unless otherwise noted.)

- Histosol (A1)
- Histic Epipedon (A2)
- Black Histic (A3)
- Hydrogen Sulfide (A4)
- Stratified Layers (A5) **(LRR F)**
- 1 cm Muck (A9) **(LRR F, G, H)**
- Depleted Below Dark Surface (A11)
- Thick Dark Surface (A12)
- Sandy Mucky Mineral (S1)
- 2.5 CM Mucky Peat or Peat (S2) **(LRR G, H)**
- 5 cm Mucky Peat or Peat (S3) **(LRR F)**
- Sandy Gleyed Matrix (S4)
- Sandy Redox (S5)
- Stripped Matrix (S6)
- Loamy Mucky Mineral (F1)
- Loamy Gleyed Matrix (F2)
- Depleted Matrix (F3)
- Redox Dark Surface (F6)
- Depleted Dark Surface (F7)
- Redox Depressions (F8)
- High Plains Depressions (F16) **(MLRA 72 & 73 of LRR H)**

Indicators for Problematic Hydric Soils³:

- 1 cm Muck (A9) **(LRR I, J)**
- Coast Prairie Redox (A16) **(LRR F, G, H)**
- Dark Surface (S7) **(LRR G)**
- High Plains Depressions (F16) **(LRR H outside of MLRA 72 & 73)**
- Reduced Vertic (F18)
- Red Parent Material (TF2)
- Very Shallow Dark Surface (TF 12)
- Other (Explain in Remarks)

³Indicators of hydrophytic vegetation and wetland hydrology must be present, unless disturbed or problematic.

Restrictive Layer (if present):

Type: _____
Depth (Inches): _____

Hydric Soils Present? Yes No

Remarks:

HYDROLOGY

Wetland Hydrology Indicators:

Primary Indicators (minimum of one required; check all that apply)

- Surface Water (A1)
- High Water Table (A2)
- Saturation (A3)
- Water Marks (B1)
- Sediment Deposits (B2)
- Drift Deposits (B3)
- Algal Mat or Crust (B4)
- Iron Deposits (B5)
- Inundation Visible on Aerial Imagery (B7)
- Water-Stained Leaves (B9)
- Salt Crust (B11)
- Aquatic Invertebrates (B13)
- Hydrogen Sulfide Odor (C1)
- Dry Season Water Table (C2)
- Oxidized Rhizospheres along Living Roots (C3) **(where not tilled)**
- Presence of Reduced Iron (C4)
- Thin Muck Surface (C7)
- Other (Explain in Remarks)

Secondary Indicators (2 or more required)

- Surface Soil Cracks (B6)
- Sparsely Vegetated Concave Surface (B8)
- Drainage Patterns (B10)
- Oxidized Rhizospheres along Living Roots (C3) **(where tilled)**
- Crayfish Burrows (C8)
- Saturation Visible on Aerial Imagery (C9)
- Geomorphic Position (D2)
- FAC-Neutral Test (D5)
- Frost-Heave Hummocks (D7) **(LRR F)**

Field Observations:

Surface Water Present? Yes No Depth (inches): _____
 Water Table Present? Yes No Depth (inches): _____
 Saturation Present? (includes capillary fringe) Yes No Depth (inches): _____

Wetland Hydrology Present? Yes No

Describe Recorded Data (stream gauge, monitoring well, aerial photos, previous inspections), if available:

Remarks:

WETLAND DETERMINATION DATA FORM – Great Plains Region

Project Site: Grenora Station City/County: Williams Sampling Date: 8/24/2011
 Applicant/Owner: Enbridge State: ND Sampling Point: 2a-w
 Investigator(s): GWM Section, Township, Range: 14, 159, 103
 Landform (hillslope, terrace, etc.): drainageway Local relief (concave, convex, none): Concave Slope (%): 1
 Subregion (LRR): E Lat: 48.603090N Long: -103.950391W Datum: NAD 83
 Soil Map Unit Name: 2032 - Zahl-Williams loams 6 to 9 percent slopes NWI classification: PEMA

Are climatic / hydrologic conditions on the site typical for this time of year? Yes No (If no, explain in Remarks.)
 Are Vegetation , Soil , or Hydrology , significantly disturbed? Are "Normal Circumstances" present? Yes No
 Are Vegetation , Soil , or Hydrology , naturally problematic? (If needed, explain any answers in Remarks.)

SUMMARY OF FINDINGS – Attach site map showing sampling point locations, transects, important features, etc.

Hydrophytic Vegetation Present?	Yes <input checked="" type="checkbox"/>	No <input type="checkbox"/>	Is the Sampling Area within a Wetland? Yes <input checked="" type="checkbox"/> No <input type="checkbox"/>
Hydric Soil Present?	Yes <input checked="" type="checkbox"/>	No <input type="checkbox"/>	
Wetland Hydrology Present?	Yes <input checked="" type="checkbox"/>	No <input type="checkbox"/>	
Remarks: Intermittent drainage dense vegetation. Scattered deep holes with open water.			

VEGETATION – Use scientific names of plants

Tree Stratum (Plot Size: _____)	Absolute % Cover	Dominant Species?	Indicator Status	Dominance Test Worksheet:
1. _____	_____	_____	_____	Number of Dominant Species That Are OBL, FACW, or FAC: _____ (A) Total Number of Dominant Species Across All Strata: _____ (B) Percent of Dominant Species That Are OBL, FACW, or FAC: _____ (A/B)
2. _____	_____	_____	_____	
3. _____	_____	_____	_____	
4. _____	_____	_____	_____	
= Total Cover				Prevalence Index worksheet: Total % Cover of: Multiply by: OBL species _____ x1 = _____ FACW species _____ x2 = _____ FAC species _____ x3 = _____ FACU species _____ x4 = _____ UPL species _____ x5 = _____ Column Totals: _____ (A) _____ (B) Prevalence Index = B/A = _____
Sapling/Shrub Stratum (Plot Size: _____)				
1. _____	_____	_____	_____	
2. _____	_____	_____	_____	
3. _____	_____	_____	_____	
4. _____	_____	_____	_____	
5. _____	_____	_____	_____	
= Total Cover				
Herb Stratum (Plot Size: 5')				
1. <u>Rumex crispus</u>	<u>40</u>	<u>yes</u>	<u>FACW</u>	
2. <u>Spartina pectinata</u>	<u>50</u>	<u>yes</u>	<u>FACW</u>	
3. <u>Bromus inermis</u>	<u>10</u>	<u>no</u>	<u>FACU</u>	
4. _____	_____	_____	_____	
5. _____	_____	_____	_____	
6. _____	_____	_____	_____	
7. _____	_____	_____	_____	
8. _____	_____	_____	_____	
9. _____	_____	_____	_____	
10. _____	_____	_____	_____	
100			= Total Cover	
Woody Vine Stratum (Plot Size: _____)				
1. _____	_____	_____	_____	
2. _____	_____	_____	_____	
_____			= Total Cover	
% Bare Ground in Herb Stratum <u>0</u>				
Hydrophytic Vegetation Present? Yes <input checked="" type="checkbox"/> No <input type="checkbox"/>				
Remarks:				

SOIL

Sampling Point: 2a-w

Profile Description: (Describe to the depth needed to document the indicator or confirm the absence of indicators.)

Depth (inches)	Matrix		Redox Features				Texture	Remarks
	Color (moist)	%	Color (Moist)	%	Type ¹	Loc ²		
0-3	10YR 3/1	100					sil	
3-12+	2.5Y 4/1	90	7.5YR 5/6	10	c	m	sil	
_____	_____	_____	_____	_____	_____	_____	_____	_____
_____	_____	_____	_____	_____	_____	_____	_____	_____
_____	_____	_____	_____	_____	_____	_____	_____	_____
_____	_____	_____	_____	_____	_____	_____	_____	_____

¹Type: C= Concentration, D=Depletion, RM=Reduced Matrix, CS=Covered or Coated Sand Grains. ²Location: PL=Pore Lining, M=Matrix

Hydric Soil Indicators: (Applicable to all LRRs, unless otherwise noted.)		Indicators for Problematic Hydric Soils³:	
<input type="checkbox"/> Histosol (A1)	<input type="checkbox"/> Sandy Gleyed Matrix (S4)	<input type="checkbox"/> 1 cm Muck (A9) (LRR I, J)	
<input type="checkbox"/> Histic Epipedon (A2)	<input type="checkbox"/> Sandy Redox (S5)	<input type="checkbox"/> Coast Prairie Redox (A16) (LRR F, G, H)	
<input type="checkbox"/> Black Histic (A3)	<input type="checkbox"/> Stripped Matrix (S6)	<input type="checkbox"/> Dark Surface (S7) (LRR G)	
<input type="checkbox"/> Hydrogen Sulfide (A4)	<input type="checkbox"/> Loamy Mucky Mineral (F1)	<input type="checkbox"/> High Plains Depressions (F16)	
<input type="checkbox"/> Stratified Layers (A5) (LRR F)	<input type="checkbox"/> Loamy Gleyed Matrix (F2)	(LRR H outside of MLRA 72 & 73)	
<input type="checkbox"/> 1 cm Muck (A9) (LRR F, G, H)	<input checked="" type="checkbox"/> Depleted Matrix (F3)	<input type="checkbox"/> Reduced Vertic (F18)	
<input checked="" type="checkbox"/> Depleted Below Dark Surface (A11)	<input type="checkbox"/> Redox Dark Surface (F6)	<input type="checkbox"/> Red Parent Material (TF2)	
<input type="checkbox"/> Thick Dark Surface (A12)	<input type="checkbox"/> Depleted Dark Surface (F7)	<input type="checkbox"/> Very Shallow Dark Surface (TF 12)	
<input type="checkbox"/> Sandy Mucky Mineral (S1)	<input type="checkbox"/> Redox Depressions (F8)	<input type="checkbox"/> Other (Explain in Remarks)	
<input type="checkbox"/> 2.5 CM Mucky Peat or Peat (S2)(LRR G, H)	<input type="checkbox"/> High Plains Depressions (F16)	³ Indicators of hydrophytic vegetation and wetland hydrology must be present, unless disturbed or problematic.	
<input type="checkbox"/> 5 cm Mucky Peat or Peat (S3) (LRR F)	(MLRA 72 & 73 of LRR H)		

Restrictive Layer (if present):

Type: _____

Depth (Inches): _____

Remarks: _____

Hydric Soils Present? Yes No

HYDROLOGY

Wetland Hydrology Indicators:	
Primary Indicators (minimum of one required; check all that apply)	Secondary Indicators (2 or more required)
<input checked="" type="checkbox"/> Surface Water (A1)	<input type="checkbox"/> Surface Soil Cracks (B6)
<input checked="" type="checkbox"/> High Water Table (A2)	<input type="checkbox"/> Sparsely Vegetated Concave Surface (B8)
<input checked="" type="checkbox"/> Saturation (A3)	<input type="checkbox"/> Drainage Patterns (B10)
<input type="checkbox"/> Water Marks (B1)	<input type="checkbox"/> Oxidized Rhizospheres along Living Roots (C3)
<input type="checkbox"/> Sediment Deposits (B2)	(where tilled)
<input type="checkbox"/> Drift Deposits (B3)	<input type="checkbox"/> Crayfish Burrows (C8)
<input type="checkbox"/> Algal Mat or Crust (B4)	<input checked="" type="checkbox"/> Saturation Visible on Aerial Imagery (C9)
<input type="checkbox"/> Iron Deposits (B5)	<input checked="" type="checkbox"/> Geomorphic Position (D2)
<input checked="" type="checkbox"/> Inundation Visible on Aerial Imagery (B7)	<input type="checkbox"/> FAC-Neutral Test (D5)
<input type="checkbox"/> Water-Stained Leaves (B9)	<input type="checkbox"/> Frost-Heave Hummocks (D7) (LRR F)
<input type="checkbox"/> Salt Crust (B11)	
<input type="checkbox"/> Aquatic Invertebrates (B13)	
<input type="checkbox"/> Hydrogen Sulfide Odor (C1)	
<input type="checkbox"/> Dry Season Water Table (C2)	
<input type="checkbox"/> Oxidized Rhizospheres along Living Roots (C3)	
(where not tilled)	
<input type="checkbox"/> Presence of Reduced Iron (C4)	
<input type="checkbox"/> Thin Muck Surface (C7)	
<input type="checkbox"/> Other (Explain in Remarks)	

Field Observations:

Surface Water Present? Yes No Depth (inches): 4

Water Table Present? Yes No Depth (inches): 0

Saturation Present? (includes capillary fringe) Yes No Depth (inches): 0

Wetland Hydrology Present? Yes No

Describe Recorded Data (stream gauge, monitoring well, aerial photos, previous inspections), if available:

Remarks: _____

WETLAND DETERMINATION DATA FORM – Great Plains Region

Project Site: Grenora Station City/County: Williams Sampling Date: 8/24/2011
 Applicant/Owner: Enbridge State: ND Sampling Point: 2a-u
 Investigator(s): GWM Section, Township, Range: 14, 159, 103
 Landform (hillslope, terrace, etc.): toeslope Local relief (concave, convex, none): plane Slope (%): 2
 Subregion (LRR): E Lat: 48.602207N Long: -103.950531W Datum: NAD 83
 Soil Map Unit Name: 2032 - Zahl-Williams loams 6 to 9 percent slopes NWI classification: none

Are climatic / hydrologic conditions on the site typical for this time of year? Yes No (If no, explain in Remarks.)
 Are Vegetation , Soil , or Hydrology , significantly disturbed? Are "Normal Circumstances" present? Yes No
 Are Vegetation , Soil , or Hydrology , naturally problematic? (If needed, explain any answers in Remarks.)

SUMMARY OF FINDINGS – Attach site map showing sampling point locations, transects, important features, etc.

Hydrophytic Vegetation Present?	Yes <input type="checkbox"/>	No <input checked="" type="checkbox"/>	Is the Sampling Area within a Wetland? Yes <input type="checkbox"/> No <input checked="" type="checkbox"/>
Hydric Soil Present?	Yes <input type="checkbox"/>	No <input checked="" type="checkbox"/>	
Wetland Hydrology Present?	Yes <input type="checkbox"/>	No <input checked="" type="checkbox"/>	
Remarks: upland comparison point above hydric boundary			

VEGETATION – Use scientific names of plants

Tree Stratum (Plot Size: _____)	Absolute % Cover	Dominant Species?	Indicator Status	Dominance Test Worksheet:
1. _____	_____	_____	_____	Number of Dominant Species That Are OBL, FACW, or FAC: <u>0</u> (A) Total Number of Dominant Species Across All Strata: <u>1</u> (B) Percent of Dominant Species That Are OBL, FACW, or FAC: <u>0</u> (A/B)
2. _____	_____	_____	_____	
3. _____	_____	_____	_____	
4. _____	_____	_____	_____	
= Total Cover				Prevalence Index worksheet: Total % Cover of: Multiply by: OBL species _____ x1 = _____ FACW species _____ x2 = _____ FAC species _____ x3 = _____ FACU species _____ x4 = _____ UPL species _____ x5 = _____ Column Totals: _____ (A) _____ (B) Prevalence Index = B/A = _____
Sapling/Shrub Stratum (Plot Size: _____)				
1. _____	_____	_____	_____	
2. _____	_____	_____	_____	
3. _____	_____	_____	_____	
4. _____	_____	_____	_____	
5. _____	_____	_____	_____	
= Total Cover				
Herb Stratum (Plot Size: <u>5'</u>)				
1. <u>Bromus inermis</u>	<u>100</u>	<u>yes</u>	<u>FACU</u>	
2. _____	_____	_____	_____	
3. _____	_____	_____	_____	
4. _____	_____	_____	_____	
5. _____	_____	_____	_____	
6. _____	_____	_____	_____	
7. _____	_____	_____	_____	
8. _____	_____	_____	_____	
9. _____	_____	_____	_____	
10. _____	_____	_____	_____	
<u>100</u>			= Total Cover	
Woody Vine Stratum (Plot Size: _____)				
1. _____	_____	_____	_____	
2. _____	_____	_____	_____	
_____			= Total Cover	
% Bare Ground in Herb Stratum <u>0</u>				
Hydrophytic Vegetation Present? Yes <input type="checkbox"/> No <input checked="" type="checkbox"/>				

Remarks:

SOIL

Sampling Point: 2a-u

Profile Description: (Describe to the depth needed to document the indicator or confirm the absence of indicators.)

Depth (inches)	Matrix		Redox Features				Texture	Remarks
	Color (moist)	%	Color (Moist)	%	Type ¹	Loc ²		
0-4	10YR 3/2	100	_____	_____	_____	_____	sil	_____
4-16+	2.5Y 3/3	100	_____	_____	_____	_____	sil	_____
_____	_____	_____	_____	_____	_____	_____	_____	_____
_____	_____	_____	_____	_____	_____	m	_____	_____
_____	_____	_____	_____	_____	_____	_____	_____	_____
_____	_____	_____	_____	_____	_____	_____	_____	_____
_____	_____	_____	_____	_____	_____	_____	_____	_____

¹Type: C= Concentration, D=Depletion, RM=Reduced Matrix, CS=Covered or Coated Sand Grains. ²Location: PL=Pore Lining, M=Matrix

Hydric Soil Indicators: (Applicable to all LRRs, unless otherwise noted.)

- Histosol (A1)
- Histic Epipedon (A2)
- Black Histic (A3)
- Hydrogen Sulfide (A4)
- Stratified Layers (A5) (LRR F)
- 1 cm Muck (A9) (LRR F, G, H)
- Depleted Below Dark Surface (A11)
- Thick Dark Surface (A12)
- Sandy Mucky Mineral (S1)
- 2.5 CM Mucky Peat or Peat (S2)(LRR G, H)
- 5 cm Mucky Peat or Peat (S3) (LRR F)
- Sandy Gleyed Matrix (S4)
- Sandy Redox (S5)
- Stripped Matrix (S6)
- Loamy Mucky Mineral (F1)
- Loamy Gleyed Matrix (F2)
- Depleted Matrix (F3)
- Redox Dark Surface (F6)
- Depleted Dark Surface (F7)
- Redox Depressions (F8)
- High Plains Depressions (F16)

Indicators for Problematic Hydric Soils³:

- 1 cm Muck (A9) (LRR I, J)
- Coast Prairie Redox (A16) (LRR F, G, H)
- Dark Surface (S7) (LRR G)
- High Plains Depressions (F16)
(LRR H outside of MLRA 72 & 73)
- Reduced Vertic (F18)
- Red Parent Material (TF2)
- Very Shallow Dark Surface (TF 12)
- Other (Explain in Remarks)

³Indicators of hydrophytic vegetation and wetland hydrology must be present, unless disturbed or problematic.

Restrictive Layer (if present):

Type: _____
Depth (Inches): _____

Hydric Soils Present? Yes No

Remarks:

HYDROLOGY

Wetland Hydrology Indicators:

Primary Indicators (minimum of one required; check all that apply)

- Surface Water (A1)
- High Water Table (A2)
- Saturation (A3)
- Water Marks (B1)
- Sediment Deposits (B2)
- Drift Deposits (B3)
- Algal Mat or Crust (B4)
- Iron Deposits (B5)
- Inundation Visible on Aerial Imagery (B7)
- Water-Stained Leaves (B9)
- Salt Crust (B11)
- Aquatic Invertebrates (B13)
- Hydrogen Sulfide Odor (C1)
- Dry Season Water Table (C2)
- Oxidized Rhizospheres along Living Roots (C3)
(where not tilled)
- Presence of Reduced Iron (C4)
- Thin Muck Surface (C7)
- Other (Explain in Remarks)

Secondary Indicators (2 or more required)

- Surface Soil Cracks (B6)
- Sparsely Vegetated Concave Surface (B8)
- Drainage Patterns (B10)
- Oxidized Rhizospheres along Living Roots (C3)
(where tilled)
- Crayfish Burrows (C8)
- Saturation Visible on Aerial Imagery (C9)
- Geomorphic Position (D2)
- FAC-Neutral Test (D5)
- Frost-Heave Hummocks (D7) (LRR F)

Field Observations:

Surface Water Present? Yes No Depth (inches): _____
 Water Table Present? Yes No Depth (inches): _____
 Saturation Present? (includes capillary fringe) Yes No Depth (inches): _____

Wetland Hydrology Present? Yes No

Describe Recorded Data (stream gauge, monitoring well, aerial photos, previous inspections), if available:

Remarks:

WETLAND DETERMINATION DATA FORM – Great Plains Region

Project Site: Grenora Station City/County: Williams Sampling Date: 8/24/2011
 Applicant/Owner: Enbridge State: ND Sampling Point: 2b-w
 Investigator(s): GWM Section, Township, Range: 14, 159, 103
 Landform (hillslope, terrace, etc.): flat in swale Local relief (concave, convex, none): Concave Slope (%): 1
 Subregion (LRR): E Lat: 48.599854N Long: -103.954130W Datum: NAD 83
 Soil Map Unit Name: 2270 - Harriet and Stirum soils 0 to 2 percent slopes NWI classification: PEMA

Are climatic / hydrologic conditions on the site typical for this time of year? Yes No (If no, explain in Remarks.)
 Are Vegetation , Soil , or Hydrology , significantly disturbed? Are "Normal Circumstances" present? Yes No
 Are Vegetation , Soil , or Hydrology , naturally problematic? (If needed, explain any answers in Remarks.)

SUMMARY OF FINDINGS – Attach site map showing sampling point locations, transects, important features, etc.

Hydrophytic Vegetation Present?	Yes <input checked="" type="checkbox"/>	No <input type="checkbox"/>	Is the Sampling Area within a Wetland? Yes <input checked="" type="checkbox"/> No <input type="checkbox"/>
Hydric Soil Present?	Yes <input checked="" type="checkbox"/>	No <input type="checkbox"/>	
Wetland Hydrology Present?	Yes <input checked="" type="checkbox"/>	No <input type="checkbox"/>	
Remarks: Salt flat at bottom of drainage.			

VEGETATION – Use scientific names of plants

Tree Stratum (Plot Size: _____)	Absolute % Cover	Dominant Species?	Indicator Status	Dominance Test Worksheet:																
1. _____	_____	_____	_____	Number of Dominant Species That Are OBL, FACW, or FAC: _____ (A) Total Number of Dominant Species Across All Strata: _____ (B) Percent of Dominant Species That Are OBL, FACW, or FAC: _____ (A/B)																
2. _____	_____	_____	_____																	
3. _____	_____	_____	_____																	
4. _____	_____	_____	_____																	
= Total Cover				Prevalence Index worksheet: <table style="width: 100%; border: none;"> <tr> <td style="text-align: center;"><u>Total % Cover of:</u></td> <td style="text-align: center;"><u>Multiply by:</u></td> </tr> <tr> <td>OBL species _____</td> <td>x1 = _____</td> </tr> <tr> <td>FACW species _____</td> <td>x2 = _____</td> </tr> <tr> <td>FAC species _____</td> <td>x3 = _____</td> </tr> <tr> <td>FACU species _____</td> <td>x4 = _____</td> </tr> <tr> <td>UPL species _____</td> <td>x5 = _____</td> </tr> <tr> <td>Column Totals: _____</td> <td>(A) _____ (B) _____</td> </tr> <tr> <td colspan="2" style="text-align: center;">Prevalence Index = B/A = _____</td> </tr> </table>	<u>Total % Cover of:</u>	<u>Multiply by:</u>	OBL species _____	x1 = _____	FACW species _____	x2 = _____	FAC species _____	x3 = _____	FACU species _____	x4 = _____	UPL species _____	x5 = _____	Column Totals: _____	(A) _____ (B) _____	Prevalence Index = B/A = _____	
<u>Total % Cover of:</u>	<u>Multiply by:</u>																			
OBL species _____	x1 = _____																			
FACW species _____	x2 = _____																			
FAC species _____	x3 = _____																			
FACU species _____	x4 = _____																			
UPL species _____	x5 = _____																			
Column Totals: _____	(A) _____ (B) _____																			
Prevalence Index = B/A = _____																				
Sapling/Shrub Stratum (Plot Size: _____)																				
1. _____	_____	_____	_____																	
2. _____	_____	_____	_____																	
3. _____	_____	_____	_____																	
4. _____	_____	_____	_____																	
5. _____	_____	_____	_____																	
= Total Cover																				
Herb Stratum (Plot Size: 5')																				
1. <u>Hordeum jubatum</u>	<u>70</u>	<u>yes</u>	<u>FACW</u>																	
2. <u>Chenopodium rubrum</u>	<u>20</u>	<u>yes</u>	<u>OBL</u>																	
3. _____	_____	_____	_____																	
4. _____	_____	_____	_____																	
5. _____	_____	_____	_____																	
6. _____	_____	_____	_____																	
7. _____	_____	_____	_____																	
8. _____	_____	_____	_____																	
9. _____	_____	_____	_____																	
10. _____	_____	_____	_____																	
10			= Total Cover																	
Woody Vine Stratum (Plot Size: _____)																				
1. _____	_____	_____	_____																	
2. _____	_____	_____	_____																	
= Total Cover																				
<table style="width: 100%; border: none;"> <tr> <td style="width: 60%;">% Bare Ground in Herb Stratum <u>0</u></td> <td style="width: 40%;"> Hydrophytic Vegetation Present? Yes <input checked="" type="checkbox"/> No <input type="checkbox"/> </td> </tr> </table>				% Bare Ground in Herb Stratum <u>0</u>	Hydrophytic Vegetation Present? Yes <input checked="" type="checkbox"/> No <input type="checkbox"/>															
% Bare Ground in Herb Stratum <u>0</u>	Hydrophytic Vegetation Present? Yes <input checked="" type="checkbox"/> No <input type="checkbox"/>																			
Remarks:																				

SOIL

Sampling Point: 2b-w

Profile Description: (Describe to the depth needed to document the indicator or confirm the absence of indicators.)

Depth (inches)	Matrix		Redox Features				Texture	Remarks
	Color (moist)	%	Color (Moist)	%	Type ¹	Loc ²		
0-2	10YR 2/1	100					sil	
2-10+	10YR 2/1	95	7.5YR 5/6	5	c	m	sil	
10-18+	2.5Y 4/2	90	7.5 YR 5/6	10	c	m	sil	
_____	_____	_____	_____	_____	_____	_____	_____	_____
_____	_____	_____	_____	_____	_____	_____	_____	_____
_____	_____	_____	_____	_____	_____	_____	_____	_____
_____	_____	_____	_____	_____	_____	_____	_____	_____

¹Type: C= Concentration, D=Depletion, RM=Reduced Matrix, CS=Covered or Coated Sand Grains. ²Location: PL=Pore Lining, M=Matrix

Hydric Soil Indicators: (Applicable to all LRRs, unless otherwise noted.)

- Histosol (A1)
- Histic Epipedon (A2)
- Black Histic (A3)
- Hydrogen Sulfide (A4)
- Stratified Layers (A5) **(LRR F)**
- 1 cm Muck (A9) **(LRR F, G, H)**
- Depleted Below Dark Surface (A11)
- Thick Dark Surface (A12)
- Sandy Mucky Mineral (S1)
- 2.5 CM Mucky Peat or Peat (S2) **(LRR G, H)**
- 5 cm Mucky Peat or Peat (S3) **(LRR F)**
- Sandy Gleyed Matrix (S4)
- Sandy Redox (S5)
- Stripped Matrix (S6)
- Loamy Mucky Mineral (F1)
- Loamy Gleyed Matrix (F2)
- Depleted Matrix (F3)
- Redox Dark Surface (F6)
- Depleted Dark Surface (F7)
- Redox Depressions (F8)
- High Plains Depressions (F16)

Indicators for Problematic Hydric Soils³:

- 1 cm Muck (A9) **(LRR I, J)**
- Coast Prairie Redox (A16) **(LRR F, G, H)**
- Dark Surface (S7) **(LRR G)**
- High Plains Depressions (F16)
- (LRR H outside of MLRA 72 & 73)**
- Reduced Vertic (F18)
- Red Parent Material (TF2)
- Very Shallow Dark Surface (TF 12)
- Other (Explain in Remarks)

³Indicators of hydrophytic vegetation and wetland hydrology must be present, unless disturbed or problematic.

Restrictive Layer (if present):

Type: _____
Depth (Inches): _____

Hydric Soils Present? Yes No

Remarks:

HYDROLOGY

Wetland Hydrology Indicators:

Primary Indicators (minimum of one required; check all that apply)

Secondary Indicators (2 or more required)

- | | | |
|---|---|---|
| <ul style="list-style-type: none"> <input type="checkbox"/> Surface Water (A1) <input type="checkbox"/> High Water Table (A2) <input checked="" type="checkbox"/> Saturation (A3) <input type="checkbox"/> Water Marks (B1) <input type="checkbox"/> Sediment Deposits (B2) <input type="checkbox"/> Drift Deposits (B3) <input type="checkbox"/> Algal Mat or Crust (B4) <input type="checkbox"/> Iron Deposits (B5) <input type="checkbox"/> Inundation Visible on Aerial Imagery (B7) <input type="checkbox"/> Water-Stained Leaves (B9) | <ul style="list-style-type: none"> <input checked="" type="checkbox"/> Salt Crust (B11) <input type="checkbox"/> Aquatic Invertebrates (B13) <input type="checkbox"/> Hydrogen Sulfide Odor (C1) <input type="checkbox"/> Dry Season Water Table (C2) <input type="checkbox"/> Oxidized Rhizospheres along Living Roots (C3) (where not tilled) <input type="checkbox"/> Presence of Reduced Iron (C4) <input type="checkbox"/> Thin Muck Surface (C7) <input type="checkbox"/> Other (Explain in Remarks) | <ul style="list-style-type: none"> <input type="checkbox"/> Surface Soil Cracks (B6) <input type="checkbox"/> Sparsely Vegetated Concave Surface (B8) <input type="checkbox"/> Drainage Patterns (B10) <input type="checkbox"/> Oxidized Rhizospheres along Living Roots (C3) (where tilled) <input type="checkbox"/> Crayfish Burrows (C8) <input checked="" type="checkbox"/> Saturation Visible on Aerial Imagery (C9) <input checked="" type="checkbox"/> Geomorphic Position (D2) <input type="checkbox"/> FAC-Neutral Test (D5) <input type="checkbox"/> Frost-Heave Hummocks (D7) (LRR F) |
|---|---|---|

Field Observations:

Surface Water Present? Yes No Depth (inches): _____
 Water Table Present? Yes No Depth (inches): _____
 Saturation Present? (includes capillary fringe) Yes No Depth (inches): 0

Wetland Hydrology Present? Yes No

Describe Recorded Data (stream gauge, monitoring well, aerial photos, previous inspections), if available:

Remarks:

WETLAND DETERMINATION DATA FORM – Great Plains Region

Project Site: Grenora Station City/County: Williams Sampling Date: 8/24/2011
 Applicant/Owner: Enbridge State: ND Sampling Point: 2b-u
 Investigator(s): GWM Section, Township, Range: 14, 159, 103
 Landform (hillslope, terrace, etc.): toeslope Local relief (concave, convex, none): plane Slope (%): 2
 Subregion (LRR): E Lat: 48.599854N Long: -103.953993W Datum: NAD 83
 Soil Map Unit Name: 2270 - Harriet and Stirum soils 0-2 percent slopes NWI classification: none

Are climatic / hydrologic conditions on the site typical for this time of year? Yes No (If no, explain in Remarks.)
 Are Vegetation , Soil , or Hydrology , significantly disturbed? Are "Normal Circumstances" present? Yes No
 Are Vegetation , Soil , or Hydrology , naturally problematic? (If needed, explain any answers in Remarks.)

SUMMARY OF FINDINGS – Attach site map showing sampling point locations, transects, important features, etc.

Hydrophytic Vegetation Present?	Yes <input checked="" type="checkbox"/>	No <input type="checkbox"/>	Is the Sampling Area within a Wetland? Yes <input type="checkbox"/> No <input checked="" type="checkbox"/>
Hydric Soil Present?	Yes <input type="checkbox"/>	No <input checked="" type="checkbox"/>	
Wetland Hydrology Present?	Yes <input checked="" type="checkbox"/>	No <input type="checkbox"/>	
Remarks: upland comparison point above hydric boundary			

VEGETATION – Use scientific names of plants

Tree Stratum (Plot Size: _____)	Absolute % Cover	Dominant Species?	Indicator Status	Dominance Test Worksheet:																
1. _____	_____	_____	_____	Number of Dominant Species That Are OBL, FACW, or FAC: _____ (A) Total Number of Dominant Species Across All Strata: _____ (B) Percent of Dominant Species That Are OBL, FACW, or FAC: _____ (A/B)																
2. _____	_____	_____	_____																	
3. _____	_____	_____	_____																	
4. _____	_____	_____	_____																	
= Total Cover				Prevalence Index worksheet: <table style="width: 100%; border: none;"> <tr> <td style="text-align: center;"><u>Total % Cover of:</u></td> <td style="text-align: center;"><u>Multiply by:</u></td> </tr> <tr> <td>OBL species _____</td> <td>x1 = _____</td> </tr> <tr> <td>FACW species _____</td> <td>x2 = _____</td> </tr> <tr> <td>FAC species _____</td> <td>x3 = _____</td> </tr> <tr> <td>FACU species _____</td> <td>x4 = _____</td> </tr> <tr> <td>UPL species _____</td> <td>x5 = _____</td> </tr> <tr> <td>Column Totals: _____</td> <td>(A) _____ (B) _____</td> </tr> <tr> <td colspan="2" style="text-align: center;">Prevalence Index = B/A = _____</td> </tr> </table>	<u>Total % Cover of:</u>	<u>Multiply by:</u>	OBL species _____	x1 = _____	FACW species _____	x2 = _____	FAC species _____	x3 = _____	FACU species _____	x4 = _____	UPL species _____	x5 = _____	Column Totals: _____	(A) _____ (B) _____	Prevalence Index = B/A = _____	
<u>Total % Cover of:</u>	<u>Multiply by:</u>																			
OBL species _____	x1 = _____																			
FACW species _____	x2 = _____																			
FAC species _____	x3 = _____																			
FACU species _____	x4 = _____																			
UPL species _____	x5 = _____																			
Column Totals: _____	(A) _____ (B) _____																			
Prevalence Index = B/A = _____																				
Sapling/Shrub Stratum (Plot Size: _____)																				
1. _____	_____	_____	_____																	
2. _____	_____	_____	_____																	
3. _____	_____	_____	_____																	
4. _____	_____	_____	_____																	
5. _____	_____	_____	_____																	
= Total Cover																				
Herb Stratum (Plot Size: 5')																				
1. <u>Hordeum jubatum</u>	<u>100</u>	<u>yes</u>	<u>FACW</u>																	
2. _____	_____	_____	_____																	
3. _____	_____	_____	_____																	
4. _____	_____	_____	_____																	
5. _____	_____	_____	_____																	
6. _____	_____	_____	_____																	
7. _____	_____	_____	_____																	
8. _____	_____	_____	_____																	
9. _____	_____	_____	_____																	
10. _____	_____	_____	_____																	
<u>100</u>			= Total Cover																	
Woody Vine Stratum (Plot Size: _____)																				
1. _____	_____	_____	_____																	
2. _____	_____	_____	_____																	
_____			= Total Cover																	
% Bare Ground in Herb Stratum <u>0</u>																				
Hydrophytic Vegetation Present? Yes <input checked="" type="checkbox"/> No <input type="checkbox"/>																				
Remarks:																				

SOIL

Sampling Point: 2b-u

Profile Description: (Describe to the depth needed to document the indicator or confirm the absence of indicators.)

Depth (inches)	Matrix		Redox Features				Texture	Remarks
	Color (moist)	%	Color (Moist)	%	Type ¹	Loc ²		
0-9	10YR 2/1	100					sil	
9-16	2.5Y 4/3	95	10YR 4/6	5	c	m	sil	

¹Type: C= Concentration, D=Depletion, RM=Reduced Matrix, CS=Covered or Coated Sand Grains. ²Location: PL=Pore Lining, M=Matrix

Hydric Soil Indicators: (Applicable to all LRRs, unless otherwise noted.)

- Histosol (A1)
- Histic Epipedon (A2)
- Black Histic (A3)
- Hydrogen Sulfide (A4)
- Stratified Layers (A5) **(LRR F)**
- 1 cm Muck (A9) **(LRR F, G, H)**
- Depleted Below Dark Surface (A11)
- Thick Dark Surface (A12)
- Sandy Mucky Mineral (S1)
- 2.5 CM Mucky Peat or Peat (S2) **(LRR G, H)**
- 5 cm Mucky Peat or Peat (S3) **(LRR F)**
- Sandy Gleyed Matrix (S4)
- Sandy Redox (S5)
- Stripped Matrix (S6)
- Loamy Mucky Mineral (F1)
- Loamy Gleyed Matrix (F2)
- Depleted Matrix (F3)
- Redox Dark Surface (F6)
- Depleted Dark Surface (F7)
- Redox Depressions (F8)
- High Plains Depressions (F16) **(MLRA 72 & 73 of LRR H)**

Indicators for Problematic Hydric Soils³:

- 1 cm Muck (A9) **(LRR I, J)**
- Coast Prairie Redox (A16) **(LRR F, G, H)**
- Dark Surface (S7) **(LRR G)**
- High Plains Depressions (F16) **(LRR H outside of MLRA 72 & 73)**
- Reduced Vertic (F18)
- Red Parent Material (TF2)
- Very Shallow Dark Surface (TF 12)
- Other (Explain in Remarks)

³Indicators of hydrophytic vegetation and wetland hydrology must be present, unless disturbed or problematic.

Restrictive Layer (if present):

Type: _____
Depth (Inches): _____

Hydric Soils Present? Yes No

Remarks:

HYDROLOGY

Wetland Hydrology Indicators:

Primary Indicators (minimum of one required; check all that apply)

- Surface Water (A1)
- High Water Table (A2)
- Saturation (A3)
- Water Marks (B1)
- Sediment Deposits (B2)
- Drift Deposits (B3)
- Algal Mat or Crust (B4)
- Iron Deposits (B5)
- Inundation Visible on Aerial Imagery (B7)
- Water-Stained Leaves (B9)
- Salt Crust (B11)
- Aquatic Invertebrates (B13)
- Hydrogen Sulfide Odor (C1)
- Dry Season Water Table (C2)
- Oxidized Rhizospheres along Living Roots (C3) **(where not tilled)**
- Presence of Reduced Iron (C4)
- Thin Muck Surface (C7)
- Other (Explain in Remarks)

Secondary Indicators (2 or more required)

- Surface Soil Cracks (B6)
- Sparsely Vegetated Concave Surface (B8)
- Drainage Patterns (B10)
- Oxidized Rhizospheres along Living Roots (C3) **(where tilled)**
- Crayfish Burrows (C8)
- Saturation Visible on Aerial Imagery (C9)
- Geomorphic Position (D2)
- FAC-Neutral Test (D5)
- Frost-Heave Hummocks (D7) **(LRR F)**

Field Observations:

Surface Water Present? Yes No Depth (inches): _____
 Water Table Present? Yes No Depth (inches): _____
 Saturation Present? (includes capillary fringe) Yes No Depth (inches): 12

Wetland Hydrology Present? Yes No

Describe Recorded Data (stream gauge, monitoring well, aerial photos, previous inspections), if available:

Remarks:

WETLAND DETERMINATION DATA FORM – Great Plains Region

Project Site: Grenora Station City/County: Williams Sampling Date: 8/24/2011
 Applicant/Owner: Enbridge State: ND Sampling Point: 2c-w
 Investigator(s): GWM Section, Township, Range: 14, 159, 103
 Landform (hillslope, terrace, etc.): swale Local relief (concave, convex, none): Concave Slope (%): 1
 Subregion (LRR): E Lat: 48.600443N Long: -103.958587W Datum: NAD 83
 Soil Map Unit Name: 2270 - Harriet and Stirum soils 0 to 2 percent slopes NWI classification: PEMA

Are climatic / hydrologic conditions on the site typical for this time of year? Yes No (If no, explain in Remarks.)
 Are Vegetation , Soil , or Hydrology , significantly disturbed? Are "Normal Circumstances" present? Yes No
 Are Vegetation , Soil , or Hydrology , naturally problematic? (If needed, explain any answers in Remarks.)

SUMMARY OF FINDINGS – Attach site map showing sampling point locations, transects, important features, etc.

Hydrophytic Vegetation Present?	Yes <input checked="" type="checkbox"/>	No <input type="checkbox"/>	Is the Sampling Area within a Wetland? Yes <input checked="" type="checkbox"/> No <input type="checkbox"/>
Hydric Soil Present?	Yes <input checked="" type="checkbox"/>	No <input type="checkbox"/>	
Wetland Hydrology Present?	Yes <input checked="" type="checkbox"/>	No <input type="checkbox"/>	
Remarks: Salt flat at bottom of drainage.			

VEGETATION – Use scientific names of plants

Tree Stratum (Plot Size: _____)	Absolute % Cover	Dominant Species?	Indicator Status	Dominance Test Worksheet:
1. _____	_____	_____	_____	Number of Dominant Species That Are OBL, FACW, or FAC: _____ (A) Total Number of Dominant Species Across All Strata: _____ (B) Percent of Dominant Species That Are OBL, FACW, or FAC: _____ (A/B)
2. _____	_____	_____	_____	
3. _____	_____	_____	_____	
4. _____	_____	_____	_____	
= Total Cover				Prevalence Index worksheet: Total % Cover of: Multiply by: OBL species _____ x1 = _____ FACW species _____ x2 = _____ FAC species _____ x3 = _____ FACU species _____ x4 = _____ UPL species _____ x5 = _____ Column Totals: _____ (A) _____ (B) Prevalence Index = B/A = _____
Sapling/Shrub Stratum (Plot Size: _____)				
1. _____	_____	_____	_____	
2. _____	_____	_____	_____	
3. _____	_____	_____	_____	
4. _____	_____	_____	_____	
5. _____	_____	_____	_____	
= Total Cover				
Herb Stratum (Plot Size: 5')				
1. <u>Hordeum jubatum</u>	<u>100</u>	<u>yes</u>	<u>FACW</u>	
2. _____	_____	_____	_____	
3. _____	_____	_____	_____	
4. _____	_____	_____	_____	
5. _____	_____	_____	_____	
6. _____	_____	_____	_____	
7. _____	_____	_____	_____	
8. _____	_____	_____	_____	
9. _____	_____	_____	_____	
10. _____	_____	_____	_____	
= Total Cover				
Woody Vine Stratum (Plot Size: _____)				
1. _____	_____	_____	_____	
2. _____	_____	_____	_____	
= Total Cover				
% Bare Ground in Herb Stratum <u>0</u>				
Hydrophytic Vegetation Present? Yes <input checked="" type="checkbox"/> No <input type="checkbox"/>				
Remarks:				

SOIL

Sampling Point: 2c-w

Profile Description: (Describe to the depth needed to document the indicator or confirm the absence of indicators.)

Depth (inches)	Matrix		Redox Features				Texture	Remarks
	Color (moist)	%	Color (Moist)	%	Type ¹	Loc ²		
0-5	10YR 2/1	100	_____	_____	_____	_____	sicl	_____
5-9	10YR 3/2	60	_____	_____	_____	_____	sicl	_____
5-9	10YR 3/1	40	_____	_____	_____	_____	sicl	_____
9-20	2.5Y 4/1	98	10YR 4/4	2	c	m	sil	_____
20-24+	2.5Y 4/2	95	10YR 4/6	5	c	m	sicl	_____
_____	_____	_____	_____	_____	_____	_____	_____	_____
_____	_____	_____	_____	_____	_____	_____	_____	_____
_____	_____	_____	_____	_____	_____	_____	_____	_____

¹Type: C= Concentration, D=Depletion, RM=Reduced Matrix, CS=Covered or Coated Sand Grains. ²Location: PL=Pore Lining, M=Matrix

Hydric Soil Indicators: (Applicable to all LRRs, unless otherwise noted.)

- Histosol (A1)
- Histic Epipedon (A2)
- Black Histic (A3)
- Hydrogen Sulfide (A4)
- Stratified Layers (A5) (LRR F)
- 1 cm Muck (A9) (LRR F, G, H)
- Depleted Below Dark Surface (A11)
- Thick Dark Surface (A12)
- Sandy Mucky Mineral (S1)
- 2.5 CM Mucky Peat or Peat (S2)(LRR G, H)
- 5 cm Mucky Peat or Peat (S3) (LRR F)
- Sandy Gleyed Matrix (S4)
- Sandy Redox (S5)
- Stripped Matrix (S6)
- Loamy Mucky Mineral (F1)
- Loamy Gleyed Matrix (F2)
- Depleted Matrix (F3)
- Redox Dark Surface (F6)
- Depleted Dark Surface (F7)
- Redox Depressions (F8)
- High Plains Depressions (F16)

Indicators for Problematic Hydric Soils³:

- 1 cm Muck (A9) (LRR I, J)
- Coast Prairie Redox (A16) (LRR F, G, H)
- Dark Surface (S7) (LRR G)
- High Plains Depressions (F16)
- (LRR H outside of MLRA 72 & 73)**
- Reduced Vertic (F18)
- Red Parent Material (TF2)
- Very Shallow Dark Surface (TF 12)
- Other (Explain in Remarks)

³Indicators of hydrophytic vegetation and wetland hydrology must be present, unless disturbed or problematic.

Restrictive Layer (if present):

Type: _____
Depth (Inches): _____

Hydric Soils Present? Yes No

Remarks:

Vallers

HYDROLOGY

Wetland Hydrology Indicators:

Primary Indicators (minimum of one required; check all that apply)

Secondary Indicators (2 or more required)

- | | | |
|--|--|---|
| <input checked="" type="checkbox"/> Surface Water (A1) | <input checked="" type="checkbox"/> Salt Crust (B11) | <input type="checkbox"/> Surface Soil Cracks (B6) |
| <input type="checkbox"/> High Water Table (A2) | <input type="checkbox"/> Aquatic Invertebrates (B13) | <input type="checkbox"/> Sparsely Vegetated Concave Surface (B8) |
| <input type="checkbox"/> Saturation (A3) | <input type="checkbox"/> Hydrogen Sulfide Odor (C1) | <input type="checkbox"/> Drainage Patterns (B10) |
| <input type="checkbox"/> Water Marks (B1) | <input type="checkbox"/> Dry Season Water Table (C2) | <input type="checkbox"/> Oxidized Rhizospheres along Living Roots (C3) |
| <input type="checkbox"/> Sediment Deposits (B2) | <input type="checkbox"/> Oxidized Rhizospheres along Living Roots (C3) | (where tilled) |
| <input type="checkbox"/> Drift Deposits (B3) | (where not tilled) | <input type="checkbox"/> Crayfish Burrows (C8) |
| <input type="checkbox"/> Algal Mat or Crust (B4) | <input type="checkbox"/> Presence of Reduced Iron (C4) | <input checked="" type="checkbox"/> Saturation Visible on Aerial Imagery (C9) |
| <input type="checkbox"/> Iron Deposits (B5) | <input type="checkbox"/> Thin Muck Surface (C7) | <input checked="" type="checkbox"/> Geomorphic Position (D2) |
| <input type="checkbox"/> Inundation Visible on Aerial Imagery (B7) | <input type="checkbox"/> Other (Explain in Remarks) | <input type="checkbox"/> FAC-Neutral Test (D5) |
| <input type="checkbox"/> Water-Stained Leaves (B9) | | <input type="checkbox"/> Frost-Heave Hummocks (D7) (LRR F) |

Field Observations:

Surface Water Present? Yes No Depth (inches): 2
 Water Table Present? Yes No Depth (inches): 8
 Saturation Present? (includes capillary fringe) Yes No Depth (inches): 4

Wetland Hydrology Present? Yes No

Describe Recorded Data (stream gauge, monitoring well, aerial photos, previous inspections), if available:

Remarks:

Surface water in interior of wetland.

WETLAND DETERMINATION DATA FORM – Great Plains Region

Project Site: Grenora Station City/County: Williams Sampling Date: 8/24/2011
 Applicant/Owner: Enbridge State: ND Sampling Point: 2c-u
 Investigator(s): GWM Section, Township, Range: 14, 159, 103
 Landform (hillslope, terrace, etc.): toeslope Local relief (concave, convex, none): plane Slope (%): 2
 Subregion (LRR): E Lat: 48.600452N Long: -103.958653W Datum: NAD 83
 Soil Map Unit Name: 2270 - Harriet and Stirum soils 0-2 percent slopes NWI classification: none

Are climatic / hydrologic conditions on the site typical for this time of year? Yes No (If no, explain in Remarks.)
 Are Vegetation , Soil , or Hydrology , significantly disturbed? Are "Normal Circumstances" present? Yes No
 Are Vegetation , Soil , or Hydrology , naturally problematic? (If needed, explain any answers in Remarks.)

SUMMARY OF FINDINGS – Attach site map showing sampling point locations, transects, important features, etc.

Hydrophytic Vegetation Present?	Yes <input checked="" type="checkbox"/>	No <input type="checkbox"/>	Is the Sampling Area within a Wetland? Yes <input type="checkbox"/> No <input checked="" type="checkbox"/>
Hydric Soil Present?	Yes <input type="checkbox"/>	No <input checked="" type="checkbox"/>	
Wetland Hydrology Present?	Yes <input type="checkbox"/>	No <input checked="" type="checkbox"/>	
Remarks: upland comparison point above hydric boundary			

VEGETATION – Use scientific names of plants

Tree Stratum (Plot Size: _____)	Absolute % Cover	Dominant Species?	Indicator Status	Dominance Test Worksheet:
1. _____	_____	_____	_____	Number of Dominant Species That Are OBL, FACW, or FAC: _____ (A) Total Number of Dominant Species Across All Strata: _____ (B) Percent of Dominant Species That Are OBL, FACW, or FAC: _____ (A/B)
2. _____	_____	_____	_____	
3. _____	_____	_____	_____	
4. _____	_____	_____	_____	
= Total Cover				Prevalence Index worksheet: Total % Cover of: Multiply by: OBL species _____ x1 = _____ FACW species _____ x2 = _____ FAC species _____ x3 = _____ FACU species _____ x4 = _____ UPL species _____ x5 = _____ Column Totals: _____ (A) _____ (B) Prevalence Index = B/A = _____
Sapling/Shrub Stratum (Plot Size: _____)				
1. _____	_____	_____	_____	
2. _____	_____	_____	_____	
3. _____	_____	_____	_____	
4. _____	_____	_____	_____	
5. _____	_____	_____	_____	
= Total Cover				
Herb Stratum (Plot Size: 5')				
1. <u>Hordeum jubatum</u>	<u>100</u>	<u>yes</u>	<u>FACW</u>	
2. _____	_____	_____	_____	
3. _____	_____	_____	_____	
4. _____	_____	_____	_____	
5. _____	_____	_____	_____	
6. _____	_____	_____	_____	
7. _____	_____	_____	_____	
8. _____	_____	_____	_____	
9. _____	_____	_____	_____	
10. _____	_____	_____	_____	
<u>100</u>			= Total Cover	
Woody Vine Stratum (Plot Size: _____)				
1. _____	_____	_____	_____	
2. _____	_____	_____	_____	
_____			= Total Cover	
% Bare Ground in Herb Stratum <u>0</u>				
Hydrophytic Vegetation Present? Yes <input checked="" type="checkbox"/> No <input type="checkbox"/>				

Remarks:

SOIL

Sampling Point: 2c-u

Profile Description: (Describe to the depth needed to document the indicator or confirm the absence of indicators.)

Depth (inches)	Matrix		Redox Features				Texture	Remarks
	Color (moist)	%	Color (Moist)	%	Type ¹	Loc ²		
0-6	10YR 2/1	100	_____	_____	_____	_____	sicl	_____
6-12+	10YR 3/3	100	_____	_____	_____	_____	sicl	_____
_____	_____	_____	_____	_____	_____	_____	_____	_____
_____	_____	_____	_____	_____	_____	_____	_____	_____
_____	_____	_____	_____	_____	_____	_____	_____	_____
_____	_____	_____	_____	_____	_____	_____	_____	_____
_____	_____	_____	_____	_____	_____	_____	_____	_____

¹Type: C= Concentration, D=Depletion, RM=Reduced Matrix, CS=Covered or Coated Sand Grains. ²Location: PL=Pore Lining, M=Matrix

Hydric Soil Indicators: (Applicable to all LRRs, unless otherwise noted.)

- Histosol (A1)
- Histic Epipedon (A2)
- Black Histic (A3)
- Hydrogen Sulfide (A4)
- Stratified Layers (A5) **(LRR F)**
- 1 cm Muck (A9) **(LRR F, G, H)**
- Depleted Below Dark Surface (A11)
- Thick Dark Surface (A12)
- Sandy Mucky Mineral (S1)
- 2.5 CM Mucky Peat or Peat (S2) **(LRR G, H)**
- 5 cm Mucky Peat or Peat (S3) **(LRR F)**
- Sandy Gleyed Matrix (S4)
- Sandy Redox (S5)
- Stripped Matrix (S6)
- Loamy Mucky Mineral (F1)
- Loamy Gleyed Matrix (F2)
- Depleted Matrix (F3)
- Redox Dark Surface (F6)
- Depleted Dark Surface (F7)
- Redox Depressions (F8)
- High Plains Depressions (F16) **(MLRA 72 & 73 of LRR H)**

Indicators for Problematic Hydric Soils³:

- 1 cm Muck (A9) **(LRR I, J)**
- Coast Prairie Redox (A16) **(LRR F, G, H)**
- Dark Surface (S7) **(LRR G)**
- High Plains Depressions (F16) **(LRR H outside of MLRA 72 & 73)**
- Reduced Vertic (F18)
- Red Parent Material (TF2)
- Very Shallow Dark Surface (TF 12)
- Other (Explain in Remarks)

³Indicators of hydrophytic vegetation and wetland hydrology must be present, unless disturbed or problematic.

Restrictive Layer (if present):

Type: _____
Depth (Inches): _____

Hydric Soils Present? Yes No

Remarks:

HYDROLOGY

Wetland Hydrology Indicators:

Primary Indicators (minimum of one required; check all that apply)

- Surface Water (A1)
- High Water Table (A2)
- Saturation (A3)
- Water Marks (B1)
- Sediment Deposits (B2)
- Drift Deposits (B3)
- Algal Mat or Crust (B4)
- Iron Deposits (B5)
- Inundation Visible on Aerial Imagery (B7)
- Water-Stained Leaves (B9)
- Salt Crust (B11)
- Aquatic Invertebrates (B13)
- Hydrogen Sulfide Odor (C1)
- Dry Season Water Table (C2)
- Oxidized Rhizospheres along Living Roots (C3) **(where not tilled)**
- Presence of Reduced Iron (C4)
- Thin Muck Surface (C7)
- Other (Explain in Remarks)

Secondary Indicators (2 or more required)

- Surface Soil Cracks (B6)
- Sparsely Vegetated Concave Surface (B8)
- Drainage Patterns (B10)
- Oxidized Rhizospheres along Living Roots (C3) **(where tilled)**
- Crayfish Burrows (C8)
- Saturation Visible on Aerial Imagery (C9)
- Geomorphic Position (D2)
- FAC-Neutral Test (D5)
- Frost-Heave Hummocks (D7) **(LRR F)**

Field Observations:

Surface Water Present? Yes No Depth (inches): _____
 Water Table Present? Yes No Depth (inches): _____
 Saturation Present? (includes capillary fringe) Yes No Depth (inches): _____

Wetland Hydrology Present? Yes No

Describe Recorded Data (stream gauge, monitoring well, aerial photos, previous inspections), if available:

Remarks:

WETLAND DETERMINATION DATA FORM – Great Plains Region

Project Site: Grenora Station City/County: Williams Sampling Date: 8/24/2011
 Applicant/Owner: Enbridge State: ND Sampling Point: 2d-w
 Investigator(s): GWM Section, Township, Range: 14, 159, 103
 Landform (hillslope, terrace, etc.): drainageway Local relief (concave, convex, none): Concave Slope (%): 1
 Subregion (LRR): E Lat: 48.604083N Long: -103.953243W Datum: NAD 83
 Soil Map Unit Name: 2015 Williams -Bowbells loams 3 to 6 percent slopes NWI classification: PEMC

Are climatic / hydrologic conditions on the site typical for this time of year? Yes No (If no, explain in Remarks.)
 Are Vegetation , Soil , or Hydrology , significantly disturbed? Are "Normal Circumstances" present? Yes No
 Are Vegetation , Soil , or Hydrology , naturally problematic? (If needed, explain any answers in Remarks.)

SUMMARY OF FINDINGS – Attach site map showing sampling point locations, transects, important features, etc.

Hydrophytic Vegetation Present?	Yes <input checked="" type="checkbox"/>	No <input type="checkbox"/>	Is the Sampling Area within a Wetland? Yes <input checked="" type="checkbox"/> No <input type="checkbox"/>
Hydric Soil Present?	Yes <input checked="" type="checkbox"/>	No <input type="checkbox"/>	
Wetland Hydrology Present?	Yes <input checked="" type="checkbox"/>	No <input type="checkbox"/>	
Remarks: Intermittent drainage dense vegetation. Scattered deep holes with open water.			

VEGETATION – Use scientific names of plants

Tree Stratum (Plot Size: _____)	Absolute % Cover	Dominant Species?	Indicator Status	Dominance Test Worksheet:																
1. _____	_____	_____	_____	Number of Dominant Species That Are OBL, FACW, or FAC: _____ (A) Total Number of Dominant Species Across All Strata: _____ (B) Percent of Dominant Species That Are OBL, FACW, or FAC: _____ (A/B)																
2. _____	_____	_____	_____																	
3. _____	_____	_____	_____																	
4. _____	_____	_____	_____																	
= Total Cover				Prevalence Index worksheet: <table style="width: 100%; border: none;"> <tr> <td style="text-align: center;"><u>Total % Cover of:</u></td> <td style="text-align: center;"><u>Multiply by:</u></td> </tr> <tr> <td>OBL species _____</td> <td>x1 = _____</td> </tr> <tr> <td>FACW species _____</td> <td>x2 = _____</td> </tr> <tr> <td>FAC species _____</td> <td>x3 = _____</td> </tr> <tr> <td>FACU species _____</td> <td>x4 = _____</td> </tr> <tr> <td>UPL species _____</td> <td>x5 = _____</td> </tr> <tr> <td>Column Totals: _____</td> <td>(A) _____ (B) _____</td> </tr> <tr> <td colspan="2" style="text-align: center;">Prevalence Index = B/A = _____</td> </tr> </table>	<u>Total % Cover of:</u>	<u>Multiply by:</u>	OBL species _____	x1 = _____	FACW species _____	x2 = _____	FAC species _____	x3 = _____	FACU species _____	x4 = _____	UPL species _____	x5 = _____	Column Totals: _____	(A) _____ (B) _____	Prevalence Index = B/A = _____	
<u>Total % Cover of:</u>	<u>Multiply by:</u>																			
OBL species _____	x1 = _____																			
FACW species _____	x2 = _____																			
FAC species _____	x3 = _____																			
FACU species _____	x4 = _____																			
UPL species _____	x5 = _____																			
Column Totals: _____	(A) _____ (B) _____																			
Prevalence Index = B/A = _____																				
Sapling/Shrub Stratum (Plot Size: _____)																				
1. _____	_____	_____	_____																	
2. _____	_____	_____	_____																	
3. _____	_____	_____	_____																	
4. _____	_____	_____	_____																	
5. _____	_____	_____	_____																	
= Total Cover																				
Herb Stratum (Plot Size: 5')																				
1. <u>Spartina pectinata</u>	40	yes	FACW																	
2. <u>Echinochloa crusgalli</u>	10	no	FACW																	
3. <u>Cirsium arvense</u>	10	no	FACU																	
4. <u>Phalaris arundinacea</u>	40	yes	FACW																	
5. _____	_____	_____	_____																	
6. _____	_____	_____	_____																	
7. _____	_____	_____	_____																	
8. _____	_____	_____	_____																	
9. _____	_____	_____	_____																	
10. _____	_____	_____	_____																	
= Total Cover																				
Woody Vine Stratum (Plot Size: _____)																				
1. _____	_____	_____	_____																	
2. _____	_____	_____	_____																	
= Total Cover																				
% Bare Ground in Herb Stratum <u>0</u>																				
Hydrophytic Vegetation Present? Yes <input checked="" type="checkbox"/> No <input type="checkbox"/>																				
Remarks:																				

SOIL

Sampling Point: 2d-w

Profile Description: (Describe to the depth needed to document the indicator or confirm the absence of indicators.)

Depth (inches)	Matrix		Redox Features				Texture	Remarks
	Color (moist)	%	Color (Moist)	%	Type ¹	Loc ²		
0-2	10YR 2/1	100					sil	
2-10	10YR 3/1	90	7.5YR 5/6	10	c	m	sil	
10-16+	2.5Y 5/2	90	7.5YR 5/6	10	c	m	sicl	
_____	_____	_____	_____	_____	_____	_____	_____	_____
_____	_____	_____	_____	_____	_____	_____	_____	_____
_____	_____	_____	_____	_____	_____	_____	_____	_____
_____	_____	_____	_____	_____	_____	_____	_____	_____

¹Type: C= Concentration, D=Depletion, RM=Reduced Matrix, CS=Covered or Coated Sand Grains. ²Location: PL=Pore Lining, M=Matrix

Hydric Soil Indicators: (Applicable to all LRRs, unless otherwise noted.)

- Histosol (A1)
- Histic Epipedon (A2)
- Black Histic (A3)
- Hydrogen Sulfide (A4)
- Stratified Layers (A5) **(LRR F)**
- 1 cm Muck (A9) **(LRR F, G, H)**
- Depleted Below Dark Surface (A11)
- Thick Dark Surface (A12)
- Sandy Mucky Mineral (S1)
- 2.5 CM Mucky Peat or Peat (S2) **(LRR G, H)**
- 5 cm Mucky Peat or Peat (S3) **(LRR F)**
- Sandy Gleyed Matrix (S4)
- Sandy Redox (S5)
- Stripped Matrix (S6)
- Loamy Mucky Mineral (F1)
- Loamy Gleyed Matrix (F2)
- Depleted Matrix (F3)
- Redox Dark Surface (F6)
- Depleted Dark Surface (F7)
- Redox Depressions (F8)
- High Plains Depressions (F16)

Indicators for Problematic Hydric Soils³:

- 1 cm Muck (A9) **(LRR I, J)**
- Coast Prairie Redox (A16) **(LRR F, G, H)**
- Dark Surface (S7) **(LRR G)**
- High Plains Depressions (F16)
- (LRR H outside of MLRA 72 & 73)**
- Reduced Vertic (F18)
- Red Parent Material (TF2)
- Very Shallow Dark Surface (TF 12)
- Other (Explain in Remarks)

³Indicators of hydrophytic vegetation and wetland hydrology must be present, unless disturbed or problematic.

Restrictive Layer (if present):

Type: _____
Depth (Inches): _____

Hydric Soils Present? Yes No

Remarks:

HYDROLOGY

Wetland Hydrology Indicators:

Primary Indicators (minimum of one required; check all that apply)

Secondary Indicators (2 or more required)

- | | | |
|--|--|---|
| <ul style="list-style-type: none"> <input checked="" type="checkbox"/> Surface Water (A1) <input checked="" type="checkbox"/> High Water Table (A2) <input checked="" type="checkbox"/> Saturation (A3) <input type="checkbox"/> Water Marks (B1) <input type="checkbox"/> Sediment Deposits (B2) <input type="checkbox"/> Drift Deposits (B3) <input type="checkbox"/> Algal Mat or Crust (B4) <input type="checkbox"/> Iron Deposits (B5) <input checked="" type="checkbox"/> Inundation Visible on Aerial Imagery (B7) <input type="checkbox"/> Water-Stained Leaves (B9) | <ul style="list-style-type: none"> <input type="checkbox"/> Salt Crust (B11) <input type="checkbox"/> Aquatic Invertebrates (B13) <input type="checkbox"/> Hydrogen Sulfide Odor (C1) <input type="checkbox"/> Dry Season Water Table (C2) <input type="checkbox"/> Oxidized Rhizospheres along Living Roots (C3) (where not tilled) <input type="checkbox"/> Presence of Reduced Iron (C4) <input type="checkbox"/> Thin Muck Surface (C7) <input type="checkbox"/> Other (Explain in Remarks) | <ul style="list-style-type: none"> <input type="checkbox"/> Surface Soil Cracks (B6) <input type="checkbox"/> Sparsely Vegetated Concave Surface (B8) <input type="checkbox"/> Drainage Patterns (B10) <input type="checkbox"/> Oxidized Rhizospheres along Living Roots (C3) (where tilled) <input type="checkbox"/> Crayfish Burrows (C8) <input checked="" type="checkbox"/> Saturation Visible on Aerial Imagery (C9) <input checked="" type="checkbox"/> Geomorphic Position (D2) <input type="checkbox"/> FAC-Neutral Test (D5) <input type="checkbox"/> Frost-Heave Hummocks (D7) (LRR F) |
|--|--|---|

Field Observations:

Surface Water Present? Yes No Depth (inches): 4
 Water Table Present? Yes No Depth (inches): 0
 Saturation Present? (includes capillary fringe) Yes No Depth (inches): 0

Wetland Hydrology Present? Yes No

Describe Recorded Data (stream gauge, monitoring well, aerial photos, previous inspections), if available:

Remarks:

WETLAND DETERMINATION DATA FORM – Great Plains Region

Project Site: Grenora Station City/County: Williams Sampling Date: 8/24/2011
 Applicant/Owner: Enbridge State: ND Sampling Point: 2d-u
 Investigator(s): GWM Section, Township, Range: 14, 159, 103
 Landform (hillslope, terrace, etc.): toeslope Local relief (concave, convex, none): plane Slope (%): 2
 Subregion (LRR): E Lat: 48.604099N Long: -103.953188W Datum: NAD 83
 Soil Map Unit Name: 2032 - Zahl-Williams loams 6 to 9 percent slopes NWI classification: none

Are climatic / hydrologic conditions on the site typical for this time of year? Yes No (If no, explain in Remarks.)
 Are Vegetation , Soil , or Hydrology , significantly disturbed? Are "Normal Circumstances" present? Yes No
 Are Vegetation , Soil , or Hydrology , naturally problematic? (If needed, explain any answers in Remarks.)

SUMMARY OF FINDINGS – Attach site map showing sampling point locations, transects, important features, etc.

Hydrophytic Vegetation Present?	Yes <input type="checkbox"/>	No <input checked="" type="checkbox"/>	Is the Sampling Area within a Wetland? Yes <input type="checkbox"/> No <input checked="" type="checkbox"/>
Hydric Soil Present?	Yes <input type="checkbox"/>	No <input checked="" type="checkbox"/>	
Wetland Hydrology Present?	Yes <input type="checkbox"/>	No <input checked="" type="checkbox"/>	
Remarks: upland comparison point above hydric boundary			

VEGETATION – Use scientific names of plants

Tree Stratum (Plot Size: _____)	Absolute % Cover	Dominant Species?	Indicator Status	Dominance Test Worksheet:
1. _____	_____	_____	_____	Number of Dominant Species That Are OBL, FACW, or FAC: 1 (A) Total Number of Dominant Species Across All Strata: 3 (B) Percent of Dominant Species That Are OBL, FACW, or FAC: 33 (A/B)
2. _____	_____	_____	_____	
3. _____	_____	_____	_____	
4. _____	_____	_____	_____	
= Total Cover				Prevalence Index worksheet: Total % Cover of: Multiply by: OBL species _____ x1 = _____ FACW species _____ x2 = _____ FAC species _____ x3 = _____ FACU species _____ x4 = _____ UPL species _____ x5 = _____ Column Totals: _____ (A) _____ (B) Prevalence Index = B/A = _____
Sapling/Shrub Stratum (Plot Size: _____)				
1. _____	_____	_____	_____	
2. _____	_____	_____	_____	
3. _____	_____	_____	_____	
4. _____	_____	_____	_____	
5. _____	_____	_____	_____	
= Total Cover				
Herb Stratum (Plot Size: 5')				
1. <u>Lactuca serriola</u>	<u>20</u>	<u>yes</u>	<u>FACU</u>	
2. <u>Kochia scoparia</u>	<u>40</u>	<u>yes</u>	<u>FAC</u>	
3. <u>Conyza canadensis</u>	<u>40</u>	<u>yes</u>	<u>FACU</u>	
4. _____	_____	_____	_____	
5. _____	_____	_____	_____	
6. _____	_____	_____	_____	
7. _____	_____	_____	_____	
8. _____	_____	_____	_____	
9. _____	_____	_____	_____	
10. _____	_____	_____	_____	
100			= Total Cover	
Woody Vine Stratum (Plot Size: _____)				
1. _____	_____	_____	_____	
2. _____	_____	_____	_____	
_____			= Total Cover	
% Bare Ground in Herb Stratum 0				
Hydrophytic Vegetation Present? Yes <input type="checkbox"/> No <input checked="" type="checkbox"/>				
Remarks:				

SOIL

Sampling Point: 2d-u

Profile Description: (Describe to the depth needed to document the indicator or confirm the absence of indicators.)

Depth (inches)	Matrix		Redox Features				Texture	Remarks
	Color (moist)	%	Color (Moist)	%	Type ¹	Loc ²		
0-6	10YR 3/1	100	_____	_____	_____	_____	sil	_____
6-12	10YR 3/2	100	_____	_____	_____	_____	sil	_____
12-16+	10YR 3/3	100	_____	_____	_____	_____	sil	_____
_____	_____	_____	_____	_____	_____	_____	_____	_____
_____	_____	_____	_____	_____	_____	_____	_____	_____
_____	_____	_____	_____	_____	_____	_____	_____	_____
_____	_____	_____	_____	_____	_____	_____	_____	_____

¹Type: C= Concentration, D=Depletion, RM=Reduced Matrix, CS=Covered or Coated Sand Grains. ²Location: PL=Pore Lining, M=Matrix

Hydric Soil Indicators: (Applicable to all LRRs, unless otherwise noted.)		Indicators for Problematic Hydric Soils³:
<input type="checkbox"/> Histosol (A1)	<input type="checkbox"/> Sandy Gleyed Matrix (S4)	<input type="checkbox"/> 1 cm Muck (A9) (LRR I, J)
<input type="checkbox"/> Histic Epipedon (A2)	<input type="checkbox"/> Sandy Redox (S5)	<input type="checkbox"/> Coast Prairie Redox (A16) (LRR F, G, H)
<input type="checkbox"/> Black Histic (A3)	<input type="checkbox"/> Stripped Matrix (S6)	<input type="checkbox"/> Dark Surface (S7) (LRR G)
<input type="checkbox"/> Hydrogen Sulfide (A4)	<input type="checkbox"/> Loamy Mucky Mineral (F1)	<input type="checkbox"/> High Plains Depressions (F16)
<input type="checkbox"/> Stratified Layers (A5) (LRR F)	<input type="checkbox"/> Loamy Gleyed Matrix (F2)	(LRR H outside of MLRA 72 & 73)
<input type="checkbox"/> 1 cm Muck (A9) (LRR F, G, H)	<input type="checkbox"/> Depleted Matrix (F3)	<input type="checkbox"/> Reduced Vertic (F18)
<input type="checkbox"/> Depleted Below Dark Surface (A11)	<input type="checkbox"/> Redox Dark Surface (F6)	<input type="checkbox"/> Red Parent Material (TF2)
<input type="checkbox"/> Thick Dark Surface (A12)	<input type="checkbox"/> Depleted Dark Surface (F7)	<input type="checkbox"/> Very Shallow Dark Surface (TF 12)
<input type="checkbox"/> Sandy Mucky Mineral (S1)	<input type="checkbox"/> Redox Depressions (F8)	<input type="checkbox"/> Other (Explain in Remarks)
<input type="checkbox"/> 2.5 CM Mucky Peat or Peat (S2) (LRR G, H)	<input type="checkbox"/> High Plains Depressions (F16)	³ Indicators of hydrophytic vegetation and wetland hydrology must be present, unless disturbed or problematic.
<input type="checkbox"/> 5 cm Mucky Peat or Peat (S3) (LRR F)	(MLRA 72 & 73 of LRR H)	

Restrictive Layer (if present):

Type: _____

Depth (Inches): _____

Remarks: _____

Hydric Soils Present? Yes No

HYDROLOGY

Wetland Hydrology Indicators:	
Primary Indicators (minimum of one required; check all that apply)	Secondary Indicators (2 or more required)
<input type="checkbox"/> Surface Water (A1)	<input type="checkbox"/> Surface Soil Cracks (B6)
<input type="checkbox"/> High Water Table (A2)	<input type="checkbox"/> Sparsely Vegetated Concave Surface (B8)
<input type="checkbox"/> Saturation (A3)	<input type="checkbox"/> Drainage Patterns (B10)
<input type="checkbox"/> Water Marks (B1)	<input type="checkbox"/> Oxidized Rhizospheres along Living Roots (C3)
<input type="checkbox"/> Sediment Deposits (B2)	(where tilled)
<input type="checkbox"/> Drift Deposits (B3)	<input type="checkbox"/> Crayfish Burrows (C8)
<input type="checkbox"/> Algal Mat or Crust (B4)	<input type="checkbox"/> Saturation Visible on Aerial Imagery (C9)
<input type="checkbox"/> Iron Deposits (B5)	<input type="checkbox"/> Geomorphic Position (D2)
<input type="checkbox"/> Inundation Visible on Aerial Imagery (B7)	<input type="checkbox"/> FAC-Neutral Test (D5)
<input type="checkbox"/> Water-Stained Leaves (B9)	<input type="checkbox"/> Frost-Heave Hummocks (D7) (LRR F)
<input type="checkbox"/> Salt Crust (B11)	
<input type="checkbox"/> Aquatic Invertebrates (B13)	
<input type="checkbox"/> Hydrogen Sulfide Odor (C1)	
<input type="checkbox"/> Dry Season Water Table (C2)	
<input type="checkbox"/> Oxidized Rhizospheres along Living Roots (C3)	
(where not tilled)	
<input type="checkbox"/> Presence of Reduced Iron (C4)	
<input type="checkbox"/> Thin Muck Surface (C7)	
<input type="checkbox"/> Other (Explain in Remarks)	

Field Observations:

Surface Water Present? Yes No Depth (inches): _____

Water Table Present? Yes No Depth (inches): _____

Saturation Present? (includes capillary fringe) Yes No Depth (inches): _____

Wetland Hydrology Present? Yes No

Describe Recorded Data (stream gauge, monitoring well, aerial photos, previous inspections), if available:

Remarks: _____

WETLAND DETERMINATION DATA FORM – Great Plains Region

Project Site: Grenora Station City/County: Williams Sampling Date: 8/24/2011
 Applicant/Owner: Enbridge State: ND Sampling Point: 3-w
 Investigator(s): GWM Section, Township, Range: 14, 159, 103
 Landform (hillslope, terrace, etc.): depression Local relief (concave, convex, none): Concave Slope (%): 1
 Subregion (LRR): E Lat: 48.598050N Long: -103.954660W Datum: NAD 83
 Soil Map Unit Name: 2032 - Zahl-Williams loams 6 to 9 percent slopes NWI classification: PEMC

Are climatic / hydrologic conditions on the site typical for this time of year? Yes No (If no, explain in Remarks.)
 Are Vegetation , Soil , or Hydrology , significantly disturbed? Are "Normal Circumstances" present? Yes No
 Are Vegetation , Soil , or Hydrology , naturally problematic? (If needed, explain any answers in Remarks.)

SUMMARY OF FINDINGS – Attach site map showing sampling point locations, transects, important features, etc.

Hydrophytic Vegetation Present?	Yes <input checked="" type="checkbox"/>	No <input type="checkbox"/>	Is the Sampling Area within a Wetland? Yes <input checked="" type="checkbox"/> No <input type="checkbox"/>
Hydric Soil Present?	Yes <input checked="" type="checkbox"/>	No <input type="checkbox"/>	
Wetland Hydrology Present?	Yes <input checked="" type="checkbox"/>	No <input type="checkbox"/>	
Remarks: Depression wetland on edge of cultivated field.			

VEGETATION – Use scientific names of plants

Tree Stratum (Plot Size: _____)	Absolute % Cover	Dominant Species?	Indicator Status	Dominance Test Worksheet:
1. _____	_____	_____	_____	Number of Dominant Species That Are OBL, FACW, or FAC: <u>2</u> (A) Total Number of Dominant Species Across All Strata: <u>2</u> (B) Percent of Dominant Species That Are OBL, FACW, or FAC: <u>100</u> (A/B)
2. _____	_____	_____	_____	
3. _____	_____	_____	_____	
4. _____	_____	_____	_____	
= Total Cover				Prevalence Index worksheet: Total % Cover of: Multiply by: OBL species _____ x1 = _____ FACW species _____ x2 = _____ FAC species _____ x3 = _____ FACU species _____ x4 = _____ UPL species _____ x5 = _____ Column Totals: _____ (A) _____ (B) Prevalence Index = B/A = _____
Sapling/Shrub Stratum (Plot Size: _____)				
1. _____	_____	_____	_____	
2. _____	_____	_____	_____	
3. _____	_____	_____	_____	
4. _____	_____	_____	_____	
5. _____	_____	_____	_____	
= Total Cover				
Herb Stratum (Plot Size: 5')				
1. <u>Rumex crispus</u>	<u>60</u>	<u>yes</u>	<u>FACW</u>	
2. <u>Agropyron canium</u>	<u>40</u>	<u>yes</u>	<u>FAC</u>	
3. _____	_____	_____	_____	
4. _____	_____	_____	_____	
5. _____	_____	_____	_____	
6. _____	_____	_____	_____	
7. _____	_____	_____	_____	
8. _____	_____	_____	_____	
9. _____	_____	_____	_____	
10. _____	_____	_____	_____	
100			= Total Cover	
Woody Vine Stratum (Plot Size: _____)				
1. _____	_____	_____	_____	
2. _____	_____	_____	_____	
_____			= Total Cover	
% Bare Ground in Herb Stratum <u>10</u>				
Hydrophytic Vegetation Present? Yes <input checked="" type="checkbox"/> No <input type="checkbox"/>				
Remarks:				

SOIL

Sampling Point: 3-w

Profile Description: (Describe to the depth needed to document the indicator or confirm the absence of indicators.)

Depth (inches)	Matrix		Redox Features				Texture	Remarks
	Color (moist)	%	Color (Moist)	%	Type ¹	Loc ²		
0-8	10YR 2/1	100	_____	_____	_____	_____	sicl	_____
8-16	10 YR 3/1	100	_____	_____	_____	_____	sicl	_____
16-24+	2.5Y 4/2	90	7.5YR 5/6	10	c	m	sicl	_____
_____	_____	_____	_____	_____	_____	_____	_____	_____
_____	_____	_____	_____	_____	_____	_____	_____	_____
_____	_____	_____	_____	_____	_____	_____	_____	_____
_____	_____	_____	_____	_____	_____	_____	_____	_____

¹Type: C= Concentration, D=Depletion, RM=Reduced Matrix, CS=Covered or Coated Sand Grains. ²Location: PL=Pore Lining, M=Matrix

Hydric Soil Indicators: (Applicable to all LRRs, unless otherwise noted.)

- Histosol (A1)
- Histic Epipedon (A2)
- Black Histic (A3)
- Hydrogen Sulfide (A4)
- Stratified Layers (A5) (LRR F)
- 1 cm Muck (A9) (LRR F, G, H)
- Depleted Below Dark Surface (A11)
- Thick Dark Surface (A12)
- Sandy Mucky Mineral (S1)
- 2.5 CM Mucky Peat or Peat (S2)(LRR G, H)
- 5 cm Mucky Peat or Peat (S3) (LRR F)
- Sandy Gleyed Matrix (S4)
- Sandy Redox (S5)
- Stripped Matrix (S6)
- Loamy Mucky Mineral (F1)
- Loamy Gleyed Matrix (F2)
- Depleted Matrix (F3)
- Redox Dark Surface (F6)
- Depleted Dark Surface (F7)
- Redox Depressions (F8)
- High Plains Depressions (F16)

Indicators for Problematic Hydric Soils³:

- 1 cm Muck (A9) (LRR I, J)
- Coast Prairie Redox (A16) (LRR F, G, H)
- Dark Surface (S7) (LRR G)
- High Plains Depressions (F16)
(LRR H outside of MLRA 72 & 73)
- Reduced Vertic (F18)
- Red Parent Material (TF2)
- Very Shallow Dark Surface (TF 12)
- Other (Explain in Remarks)

³Indicators of hydrophytic vegetation and wetland hydrology must be present, unless disturbed or problematic.

Restrictive Layer (if present):

Type: _____
Depth (Inches): _____

Hydric Soils Present? Yes No

Remarks:

sediment due to cultivation practices

HYDROLOGY

Wetland Hydrology Indicators:

Primary Indicators (minimum of one required; check all that apply)

Secondary Indicators (2 or more required)

- | | | |
|---|--|--|
| <input checked="" type="checkbox"/> Surface Water (A1) | <input type="checkbox"/> Salt Crust (B11) | <input type="checkbox"/> Surface Soil Cracks (B6) |
| <input checked="" type="checkbox"/> High Water Table (A2) | <input type="checkbox"/> Aquatic Invertebrates (B13) | <input type="checkbox"/> Sparsely Vegetated Concave Surface (B8) |
| <input checked="" type="checkbox"/> Saturation (A3) | <input type="checkbox"/> Hydrogen Sulfide Odor (C1) | <input type="checkbox"/> Drainage Patterns (B10) |
| <input type="checkbox"/> Water Marks (B1) | <input type="checkbox"/> Dry Season Water Table (C2) | <input type="checkbox"/> Oxidized Rhizospheres along Living Roots (C3)
(where tilled) |
| <input type="checkbox"/> Sediment Deposits (B2) | <input type="checkbox"/> Oxidized Rhizospheres along Living Roots (C3)
(where not tilled) | <input type="checkbox"/> Crayfish Burrows (C8) |
| <input type="checkbox"/> Drift Deposits (B3) | <input type="checkbox"/> Presence of Reduced Iron (C4) | <input checked="" type="checkbox"/> Saturation Visible on Aerial Imagery (C9) |
| <input type="checkbox"/> Algal Mat or Crust (B4) | <input type="checkbox"/> Thin Muck Surface (C7) | <input checked="" type="checkbox"/> Geomorphic Position (D2) |
| <input type="checkbox"/> Iron Deposits (B5) | <input type="checkbox"/> Other (Explain in Remarks) | <input type="checkbox"/> FAC-Neutral Test (D5) |
| <input checked="" type="checkbox"/> Inundation Visible on Aerial Imagery (B7) | | <input type="checkbox"/> Frost-Heave Hummocks (D7) (LRR F) |
| <input type="checkbox"/> Water-Stained Leaves (B9) | | |

Field Observations:

Surface Water Present? Yes No Depth (inches): 4
 Water Table Present? Yes No Depth (inches): 0
 Saturation Present?
(includes capillary fringe) Yes No Depth (inches): 0

Wetland Hydrology Present? Yes No

Describe Recorded Data (stream gauge, monitoring well, aerial photos, previous inspections), if available:

Remarks:

WETLAND DETERMINATION DATA FORM – Great Plains Region

Project Site: Grenora Station City/County: Williams Sampling Date: 8/24/2011
 Applicant/Owner: Enbridge State: ND Sampling Point: 3-u
 Investigator(s): GWM Section, Township, Range: 14, 159, 103
 Landform (hillslope, terrace, etc.): toeslope Local relief (concave, convex, none): plane Slope (%): 2
 Subregion (LRR): E Lat: 48.598099N Long: -103.954654W Datum: NAD 83
 Soil Map Unit Name: 2032 - Zahl-Williams loams 6 to 9 percent slopes NWI classification: none

Are climatic / hydrologic conditions on the site typical for this time of year? Yes No (If no, explain in Remarks.)
 Are Vegetation , Soil , or Hydrology , significantly disturbed? Are "Normal Circumstances" present? Yes No
 Are Vegetation , Soil , or Hydrology , naturally problematic? (If needed, explain any answers in Remarks.)

SUMMARY OF FINDINGS – Attach site map showing sampling point locations, transects, important features, etc.

Hydrophytic Vegetation Present?	Yes <input type="checkbox"/>	No <input checked="" type="checkbox"/>	Is the Sampling Area within a Wetland? Yes <input type="checkbox"/> No <input checked="" type="checkbox"/>
Hydric Soil Present?	Yes <input type="checkbox"/>	No <input checked="" type="checkbox"/>	
Wetland Hydrology Present?	Yes <input type="checkbox"/>	No <input checked="" type="checkbox"/>	
Remarks: upland comparison point above hydric boundary			

VEGETATION – Use scientific names of plants

Tree Stratum (Plot Size: _____)	Absolute % Cover	Dominant Species?	Indicator Status	Dominance Test Worksheet:
1. _____	_____	_____	_____	Number of Dominant Species That Are OBL, FACW, or FAC: <u>0</u> (A) Total Number of Dominant Species Across All Strata: <u>1</u> (B) Percent of Dominant Species That Are OBL, FACW, or FAC: <u>0</u> (A/B)
2. _____	_____	_____	_____	
3. _____	_____	_____	_____	
4. _____	_____	_____	_____	
= Total Cover				Prevalence Index worksheet: Total % Cover of: Multiply by: OBL species _____ x1 = _____ FACW species _____ x2 = _____ FAC species _____ x3 = _____ FACU species _____ x4 = _____ UPL species _____ x5 = _____ Column Totals: _____ (A) _____ (B) Prevalence Index = B/A = _____
<u>Sapling/Shrub Stratum</u> (Plot Size: _____)				
1. _____	_____	_____	_____	
2. _____	_____	_____	_____	
3. _____	_____	_____	_____	
4. _____	_____	_____	_____	
5. _____	_____	_____	_____	
= Total Cover				
<u>Herb Stratum</u> (Plot Size: <u>5'</u>)				
1. <u>Setaria glauca</u>	<u>90</u>	<u>yes</u>	<u>FACU</u>	
2. _____	_____	_____	_____	
3. _____	_____	_____	_____	
4. _____	_____	_____	_____	
5. _____	_____	_____	_____	
6. _____	_____	_____	_____	
7. _____	_____	_____	_____	
8. _____	_____	_____	_____	
9. _____	_____	_____	_____	
10. _____	_____	_____	_____	
<u>90</u> = Total Cover				
<u>Woody Vine Stratum</u> (Plot Size: _____)				
1. _____	_____	_____	_____	
2. _____	_____	_____	_____	
= Total Cover				
% Bare Ground in Herb Stratum <u>10</u>				
Hydrophytic Vegetation Present? Yes <input type="checkbox"/> No <input checked="" type="checkbox"/>				
Remarks:				

SOIL

Sampling Point: 3-u

Profile Description: (Describe to the depth needed to document the indicator or confirm the absence of indicators.)

Depth (inches)	Matrix		Redox Features				Texture	Remarks
	Color (moist)	%	Color (Moist)	%	Type ¹	Loc ²		
0-4	10YR 3/2	100	_____	_____	_____	_____	sil	_____
4-12+	10 YR 3/3	100	_____	_____	_____	_____	sil	_____
_____	_____	_____	_____	_____	_____	_____	_____	_____
_____	_____	_____	_____	_____	_____	_____	_____	_____
_____	_____	_____	_____	_____	_____	_____	_____	_____
_____	_____	_____	_____	_____	_____	_____	_____	_____

¹Type: C= Concentration, D=Depletion, RM=Reduced Matrix, CS=Covered or Coated Sand Grains. ²Location: PL=Pore Lining, M=Matrix

Hydric Soil Indicators: (Applicable to all LRRs, unless otherwise noted.)

- Histosol (A1)
- Histic Epipedon (A2)
- Black Histic (A3)
- Hydrogen Sulfide (A4)
- Stratified Layers (A5) **(LRR F)**
- 1 cm Muck (A9) **(LRR F, G, H)**
- Depleted Below Dark Surface (A11)
- Thick Dark Surface (A12)
- Sandy Mucky Mineral (S1)
- 2.5 CM Mucky Peat or Peat (S2) **(LRR G, H)**
- 5 cm Mucky Peat or Peat (S3) **(LRR F)**
- Sandy Gleyed Matrix (S4)
- Sandy Redox (S5)
- Stripped Matrix (S6)
- Loamy Mucky Mineral (F1)
- Loamy Gleyed Matrix (F2)
- Depleted Matrix (F3)
- Redox Dark Surface (F6)
- Depleted Dark Surface (F7)
- Redox Depressions (F8)
- High Plains Depressions (F16) **(MLRA 72 & 73 of LRR H)**

Indicators for Problematic Hydric Soils³:

- 1 cm Muck (A9) **(LRR I, J)**
- Coast Prairie Redox (A16) **(LRR F, G, H)**
- Dark Surface (S7) **(LRR G)**
- High Plains Depressions (F16) **(LRR H outside of MLRA 72 & 73)**
- Reduced Vertic (F18)
- Red Parent Material (TF2)
- Very Shallow Dark Surface (TF 12)
- Other (Explain in Remarks)

³Indicators of hydrophytic vegetation and wetland hydrology must be present, unless disturbed or problematic.

Restrictive Layer (if present):

Type: _____
Depth (Inches): _____

Hydric Soils Present? Yes No

Remarks:

HYDROLOGY

Wetland Hydrology Indicators:

Primary Indicators (minimum of one required; check all that apply)

- Surface Water (A1)
- High Water Table (A2)
- Saturation (A3)
- Water Marks (B1)
- Sediment Deposits (B2)
- Drift Deposits (B3)
- Algal Mat or Crust (B4)
- Iron Deposits (B5)
- Inundation Visible on Aerial Imagery (B7)
- Water-Stained Leaves (B9)
- Salt Crust (B11)
- Aquatic Invertebrates (B13)
- Hydrogen Sulfide Odor (C1)
- Dry Season Water Table (C2)
- Oxidized Rhizospheres along Living Roots (C3) **(where not tilled)**
- Presence of Reduced Iron (C4)
- Thin Muck Surface (C7)
- Other (Explain in Remarks)

Secondary Indicators (2 or more required)

- Surface Soil Cracks (B6)
- Sparsely Vegetated Concave Surface (B8)
- Drainage Patterns (B10)
- Oxidized Rhizospheres along Living Roots (C3) **(where tilled)**
- Crayfish Burrows (C8)
- Saturation Visible on Aerial Imagery (C9)
- Geomorphic Position (D2)
- FAC-Neutral Test (D5)
- Frost-Heave Hummocks (D7) **(LRR F)**

Field Observations:

Surface Water Present? Yes No Depth (inches): _____
 Water Table Present? Yes No Depth (inches): _____
 Saturation Present? (includes capillary fringe) Yes No Depth (inches): _____

Wetland Hydrology Present? Yes No

Describe Recorded Data (stream gauge, monitoring well, aerial photos, previous inspections), if available:

Remarks:

WETLAND DETERMINATION DATA FORM – Great Plains Region

Project Site: Grenora Station City/County: Williams Sampling Date: 8/24/2011
 Applicant/Owner: Enbridge State: ND Sampling Point: 4-w
 Investigator(s): GWM Section, Township, Range: 14, 159, 103
 Landform (hillslope, terrace, etc.): depression Local relief (concave, convex, none): Concave Slope (%): 1
 Subregion (LRR): E Lat: 48.597852N Long: -103.956906W Datum: NAD 83
 Soil Map Unit Name: 2032 - Zahl-Williams loams 6 to 9 percent slopes NWI classification: PEMC

Are climatic / hydrologic conditions on the site typical for this time of year? Yes No (If no, explain in Remarks.)
 Are Vegetation , Soil , or Hydrology , significantly disturbed? Are "Normal Circumstances" present? Yes No
 Are Vegetation , Soil , or Hydrology , naturally problematic? (If needed, explain any answers in Remarks.)

SUMMARY OF FINDINGS – Attach site map showing sampling point locations, transects, important features, etc.

Hydrophytic Vegetation Present?	Yes <input checked="" type="checkbox"/>	No <input type="checkbox"/>	Is the Sampling Area within a Wetland? Yes <input checked="" type="checkbox"/> No <input type="checkbox"/>
Hydric Soil Present?	Yes <input checked="" type="checkbox"/>	No <input type="checkbox"/>	
Wetland Hydrology Present?	Yes <input checked="" type="checkbox"/>	No <input type="checkbox"/>	
Remarks: Depression wetland on edge of cultivated field.			

VEGETATION – Use scientific names of plants

Tree Stratum (Plot Size: _____)	Absolute % Cover	Dominant Species?	Indicator Status	Dominance Test Worksheet:
1. _____	_____	_____	_____	Number of Dominant Species That Are OBL, FACW, or FAC: <u>2</u> (A) Total Number of Dominant Species Across All Strata: <u>2</u> (B) Percent of Dominant Species That Are OBL, FACW, or FAC: <u>100</u> (A/B)
2. _____	_____	_____	_____	
3. _____	_____	_____	_____	
4. _____	_____	_____	_____	
= Total Cover				Prevalence Index worksheet: Total % Cover of: Multiply by: OBL species _____ x1 = _____ FACW species _____ x2 = _____ FAC species _____ x3 = _____ FACU species _____ x4 = _____ UPL species _____ x5 = _____ Column Totals: _____ (A) _____ (B) Prevalence Index = B/A = _____
Sapling/Shrub Stratum (Plot Size: _____)				
1. _____	_____	_____	_____	
2. _____	_____	_____	_____	
3. _____	_____	_____	_____	
4. _____	_____	_____	_____	
5. _____	_____	_____	_____	
= Total Cover				
Herb Stratum (Plot Size: 5')				
1. <u>Artemisia biennis</u>	<u>40</u>	<u>yes</u>	<u>FAC</u>	
2. <u>Ranunculus recurvatus</u>	<u>20</u>	<u>yes</u>	<u>FAC</u>	
3. <u>Amaranthus blitoides</u>	<u>15</u>	<u>no</u>	<u>FAC</u>	
4. <u>Setaria glauca</u>	<u>10</u>	<u>no</u>	<u>FACU</u>	
5. <u>Typha angustifolia</u>	<u>10</u>	<u>no</u>	<u>OBL</u>	
6. <u>Echinochloa crusgalli</u>	<u>5</u>	<u>no</u>	<u>FACW</u>	
7. _____	_____	_____	_____	
8. _____	_____	_____	_____	
9. _____	_____	_____	_____	
10. _____	_____	_____	_____	
= Total Cover				
Woody Vine Stratum (Plot Size: _____)				
1. _____	_____	_____	_____	
2. _____	_____	_____	_____	
= Total Cover				
% Bare Ground in Herb Stratum <u>0</u>				
Hydrophytic Vegetation Present? Yes <input checked="" type="checkbox"/> No <input type="checkbox"/>				
Remarks:				

SOIL

Sampling Point: 4-w

Profile Description: (Describe to the depth needed to document the indicator or confirm the absence of indicators.)

Depth (inches)	Matrix		Redox Features				Texture	Remarks
	Color (moist)	%	Color (Moist)	%	Type ¹	Loc ²		
0-6	10YR 2/1	100					sicl	
6-16+	2.5Y 4/2	80	7.5YR 5/6	20	c	m	sicl	
_____	_____	_____	_____	_____	_____	_____	_____	_____
_____	_____	_____	_____	_____	_____	_____	_____	_____
_____	_____	_____	_____	_____	_____	_____	_____	_____
_____	_____	_____	_____	_____	_____	_____	_____	_____

¹Type: C= Concentration, D=Depletion, RM=Reduced Matrix, CS=Covered or Coated Sand Grains. ²Location: PL=Pore Lining, M=Matrix

Hydric Soil Indicators: (Applicable to all LRRs, unless otherwise noted.)

- Histosol (A1)
- Histic Epipedon (A2)
- Black Histic (A3)
- Hydrogen Sulfide (A4)
- Stratified Layers (A5) (LRR F)
- 1 cm Muck (A9) (LRR F, G, H)
- Depleted Below Dark Surface (A11)
- Thick Dark Surface (A12)
- Sandy Mucky Mineral (S1)
- 2.5 CM Mucky Peat or Peat (S2)(LRR G, H)
- 5 cm Mucky Peat or Peat (S3) (LRR F)
- Sandy Gleyed Matrix (S4)
- Sandy Redox (S5)
- Stripped Matrix (S6)
- Loamy Mucky Mineral (F1)
- Loamy Gleyed Matrix (F2)
- Depleted Matrix (F3)
- Redox Dark Surface (F6)
- Depleted Dark Surface (F7)
- Redox Depressions (F8)
- High Plains Depressions (F16)

Indicators for Problematic Hydric Soils³:

- 1 cm Muck (A9) (LRR I, J)
- Coast Prairie Redox (A16) (LRR F, G, H)
- Dark Surface (S7) (LRR G)
- High Plains Depressions (F16)
- (LRR H outside of MLRA 72 & 73)**
- Reduced Vertic (F18)
- Red Parent Material (TF2)
- Very Shallow Dark Surface (TF 12)
- Other (Explain in Remarks)

³Indicators of hydrophytic vegetation and wetland hydrology must be present, unless disturbed or problematic.

Restrictive Layer (if present):

Type: _____
Depth (Inches): _____

Hydric Soils Present? Yes No

Remarks:

HYDROLOGY

Wetland Hydrology Indicators:

Primary Indicators (minimum of one required; check all that apply)

Secondary Indicators (2 or more required)

- | | | |
|--|--|---|
| <input checked="" type="checkbox"/> Surface Water (A1) | <input type="checkbox"/> Salt Crust (B11) | <input type="checkbox"/> Surface Soil Cracks (B6) |
| <input checked="" type="checkbox"/> High Water Table (A2) | <input type="checkbox"/> Aquatic Invertebrates (B13) | <input type="checkbox"/> Sparsely Vegetated Concave Surface (B8) |
| <input checked="" type="checkbox"/> Saturation (A3) | <input type="checkbox"/> Hydrogen Sulfide Odor (C1) | <input type="checkbox"/> Drainage Patterns (B10) |
| <input type="checkbox"/> Water Marks (B1) | <input type="checkbox"/> Dry Season Water Table (C2) | <input type="checkbox"/> Oxidized Rhizospheres along Living Roots (C3) |
| <input type="checkbox"/> Sediment Deposits (B2) | <input type="checkbox"/> Oxidized Rhizospheres along Living Roots (C3) | (where tilled) |
| <input type="checkbox"/> Drift Deposits (B3) | (where not tilled) | <input type="checkbox"/> Crayfish Burrows (C8) |
| <input type="checkbox"/> Algal Mat or Crust (B4) | <input type="checkbox"/> Presence of Reduced Iron (C4) | <input checked="" type="checkbox"/> Saturation Visible on Aerial Imagery (C9) |
| <input type="checkbox"/> Iron Deposits (B5) | <input type="checkbox"/> Thin Muck Surface (C7) | <input checked="" type="checkbox"/> Geomorphic Position (D2) |
| <input type="checkbox"/> Inundation Visible on Aerial Imagery (B7) | <input type="checkbox"/> Other (Explain in Remarks) | <input type="checkbox"/> FAC-Neutral Test (D5) |
| <input type="checkbox"/> Water-Stained Leaves (B9) | | <input type="checkbox"/> Frost-Heave Hummocks (D7) (LRR F) |

Field Observations:

Surface Water Present? Yes No Depth (inches): 4
 Water Table Present? Yes No Depth (inches): 0
 Saturation Present? (includes capillary fringe) Yes No Depth (inches): 0

Wetland Hydrology Present? Yes No

Describe Recorded Data (stream gauge, monitoring well, aerial photos, previous inspections), if available:

Remarks:

surface water in interior

WETLAND DETERMINATION DATA FORM – Great Plains Region

Project Site: Grenora Station City/County: Williams Sampling Date: 8/24/2011
 Applicant/Owner: Enbridge State: ND Sampling Point: 4-u
 Investigator(s): GWM Section, Township, Range: 14, 159, 103
 Landform (hillslope, terrace, etc.): toeslope Local relief (concave, convex, none): plane Slope (%): 2
 Subregion (LRR): E Lat: 48.597912N Long: -103.956850W Datum: NAD 83
 Soil Map Unit Name: 2032 - Zahl-Williams loams 6 to 9 percent slopes NWI classification: none

Are climatic / hydrologic conditions on the site typical for this time of year? Yes No (If no, explain in Remarks.)
 Are Vegetation , Soil , or Hydrology , significantly disturbed? Are "Normal Circumstances" present? Yes No
 Are Vegetation , Soil , or Hydrology , naturally problematic? (If needed, explain any answers in Remarks.)

SUMMARY OF FINDINGS – Attach site map showing sampling point locations, transects, important features, etc.

Hydrophytic Vegetation Present?	Yes <input type="checkbox"/>	No <input checked="" type="checkbox"/>	Is the Sampling Area within a Wetland? Yes <input type="checkbox"/> No <input checked="" type="checkbox"/>
Hydric Soil Present?	Yes <input type="checkbox"/>	No <input checked="" type="checkbox"/>	
Wetland Hydrology Present?	Yes <input type="checkbox"/>	No <input checked="" type="checkbox"/>	
Remarks: upland comparison point above hydric boundary			

VEGETATION – Use scientific names of plants

Tree Stratum (Plot Size: _____)	Absolute % Cover	Dominant Species?	Indicator Status	Dominance Test Worksheet:
1. _____	_____	_____	_____	Number of Dominant Species That Are OBL, FACW, or FAC: <u>0</u> (A) Total Number of Dominant Species Across All Strata: <u>1</u> (B) Percent of Dominant Species That Are OBL, FACW, or FAC: <u>0</u> (A/B)
2. _____	_____	_____	_____	
3. _____	_____	_____	_____	
4. _____	_____	_____	_____	
= Total Cover				Prevalence Index worksheet: Total % Cover of: Multiply by: OBL species _____ x1 = _____ FACW species _____ x2 = _____ FAC species _____ x3 = _____ FACU species _____ x4 = _____ UPL species _____ x5 = _____ Column Totals: _____ (A) _____ (B) Prevalence Index = B/A = _____
Sapling/Shrub Stratum (Plot Size: _____)				
1. _____	_____	_____	_____	
2. _____	_____	_____	_____	
3. _____	_____	_____	_____	
4. _____	_____	_____	_____	
5. _____	_____	_____	_____	
= Total Cover				
Herb Stratum (Plot Size: 5')				
1. <u>Setaria glauca</u>	<u>80</u>	<u>yes</u>	<u>FACU</u>	
2. _____	_____	_____	_____	
3. _____	_____	_____	_____	
4. _____	_____	_____	_____	
5. _____	_____	_____	_____	
6. _____	_____	_____	_____	
7. _____	_____	_____	_____	
8. _____	_____	_____	_____	
9. _____	_____	_____	_____	
10. _____	_____	_____	_____	
= Total Cover				
Woody Vine Stratum (Plot Size: _____)				
1. _____	_____	_____	_____	
2. _____	_____	_____	_____	
= Total Cover				
% Bare Ground in Herb Stratum <u>20</u>				
Hydrophytic Vegetation Present? Yes <input type="checkbox"/> No <input checked="" type="checkbox"/>				

Remarks:

SOIL

Sampling Point: 4-u

Profile Description: (Describe to the depth needed to document the indicator or confirm the absence of indicators.)

Depth (inches)	Matrix		Redox Features				Texture	Remarks
	Color (moist)	%	Color (Moist)	%	Type ¹	Loc ²		
0-9	10YR 3/2	100	_____	_____	_____	_____	sil	_____
9-16+	2.5Y 4/3	100	_____	_____	_____	_____	sil	_____
_____	_____	_____	_____	_____	_____	_____	_____	_____
_____	_____	_____	_____	_____	_____	_____	_____	_____
_____	_____	_____	_____	_____	_____	_____	_____	_____
_____	_____	_____	_____	_____	_____	_____	_____	_____

¹Type: C= Concentration, D=Depletion, RM=Reduced Matrix, CS=Covered or Coated Sand Grains. ²Location: PL=Pore Lining, M=Matrix

Hydric Soil Indicators: (Applicable to all LRRs, unless otherwise noted.)

- Histosol (A1)
- Histic Epipedon (A2)
- Black Histic (A3)
- Hydrogen Sulfide (A4)
- Stratified Layers (A5) **(LRR F)**
- 1 cm Muck (A9) **(LRR F, G, H)**
- Depleted Below Dark Surface (A11)
- Thick Dark Surface (A12)
- Sandy Mucky Mineral (S1)
- 2.5 CM Mucky Peat or Peat (S2) **(LRR G, H)**
- 5 cm Mucky Peat or Peat (S3) **(LRR F)**
- Sandy Gleyed Matrix (S4)
- Sandy Redox (S5)
- Stripped Matrix (S6)
- Loamy Mucky Mineral (F1)
- Loamy Gleyed Matrix (F2)
- Depleted Matrix (F3)
- Redox Dark Surface (F6)
- Depleted Dark Surface (F7)
- Redox Depressions (F8)
- High Plains Depressions (F16) **(MLRA 72 & 73 of LRR H)**

Indicators for Problematic Hydric Soils³:

- 1 cm Muck (A9) **(LRR I, J)**
- Coast Prairie Redox (A16) **(LRR F, G, H)**
- Dark Surface (S7) **(LRR G)**
- High Plains Depressions (F16) **(LRR H outside of MLRA 72 & 73)**
- Reduced Vertic (F18)
- Red Parent Material (TF2)
- Very Shallow Dark Surface (TF 12)
- Other (Explain in Remarks)

³Indicators of hydrophytic vegetation and wetland hydrology must be present, unless disturbed or problematic.

Restrictive Layer (if present):

Type: _____
Depth (Inches): _____

Hydric Soils Present? Yes No

Remarks:

HYDROLOGY

Wetland Hydrology Indicators:

Primary Indicators (minimum of one required; check all that apply)

- Surface Water (A1)
- High Water Table (A2)
- Saturation (A3)
- Water Marks (B1)
- Sediment Deposits (B2)
- Drift Deposits (B3)
- Algal Mat or Crust (B4)
- Iron Deposits (B5)
- Inundation Visible on Aerial Imagery (B7)
- Water-Stained Leaves (B9)
- Salt Crust (B11)
- Aquatic Invertebrates (B13)
- Hydrogen Sulfide Odor (C1)
- Dry Season Water Table (C2)
- Oxidized Rhizospheres along Living Roots (C3) **(where not tilled)**
- Presence of Reduced Iron (C4)
- Thin Muck Surface (C7)
- Other (Explain in Remarks)

Secondary Indicators (2 or more required)

- Surface Soil Cracks (B6)
- Sparsely Vegetated Concave Surface (B8)
- Drainage Patterns (B10)
- Oxidized Rhizospheres along Living Roots (C3) **(where tilled)**
- Crayfish Burrows (C8)
- Saturation Visible on Aerial Imagery (C9)
- Geomorphic Position (D2)
- FAC-Neutral Test (D5)
- Frost-Heave Hummocks (D7) **(LRR F)**

Field Observations:

Surface Water Present? Yes No Depth (inches): _____
 Water Table Present? Yes No Depth (inches): _____
 Saturation Present? (includes capillary fringe) Yes No Depth (inches): _____

Wetland Hydrology Present? Yes No

Describe Recorded Data (stream gauge, monitoring well, aerial photos, previous inspections), if available:

Remarks:

WETLAND DETERMINATION DATA FORM – Great Plains Region

Project Site: Grenora Station City/County: Williams Sampling Date: 8/24/2011
 Applicant/Owner: Enbridge State: ND Sampling Point: 5-w
 Investigator(s): GWM Section, Township, Range: 14, 159, 103
 Landform (hillslope, terrace, etc.): depression Local relief (concave, convex, none): Concave Slope (%): 1
 Subregion (LRR): E Lat: 48.597906N Long: -103.958896W Datum: NAD 83
 Soil Map Unit Name: 2032 - Zahl-Williams loams 6 to 9 percent slopes NWI classification: none

Are climatic / hydrologic conditions on the site typical for this time of year? Yes No (If no, explain in Remarks.)
 Are Vegetation , Soil , or Hydrology , significantly disturbed? Are "Normal Circumstances" present? Yes No
 Are Vegetation , Soil , or Hydrology , naturally problematic? (If needed, explain any answers in Remarks.)

SUMMARY OF FINDINGS – Attach site map showing sampling point locations, transects, important features, etc.

Hydrophytic Vegetation Present?	Yes <input checked="" type="checkbox"/>	No <input type="checkbox"/>	Is the Sampling Area within a Wetland? Yes <input checked="" type="checkbox"/> No <input type="checkbox"/>
Hydric Soil Present?	Yes <input checked="" type="checkbox"/>	No <input type="checkbox"/>	
Wetland Hydrology Present?	Yes <input checked="" type="checkbox"/>	No <input type="checkbox"/>	
Remarks: Depression wetland in cultivated field.			

VEGETATION – Use scientific names of plants

Tree Stratum (Plot Size: _____)	Absolute % Cover	Dominant Species?	Indicator Status	Dominance Test Worksheet:
1. _____	_____	_____	_____	Number of Dominant Species That Are OBL, FACW, or FAC: <u>2</u> (A) Total Number of Dominant Species Across All Strata: <u>2</u> (B) Percent of Dominant Species That Are OBL, FACW, or FAC: <u>100</u> (A/B)
2. _____	_____	_____	_____	
3. _____	_____	_____	_____	
4. _____	_____	_____	_____	
= Total Cover				Prevalence Index worksheet: Total % Cover of: Multiply by: OBL species _____ x1 = _____ FACW species _____ x2 = _____ FAC species _____ x3 = _____ FACU species _____ x4 = _____ UPL species _____ x5 = _____ Column Totals: _____ (A) _____ (B) Prevalence Index = B/A = _____
Sapling/Shrub Stratum (Plot Size: _____)				
1. _____	_____	_____	_____	
2. _____	_____	_____	_____	
3. _____	_____	_____	_____	
4. _____	_____	_____	_____	
5. _____	_____	_____	_____	
= Total Cover				
Herb Stratum (Plot Size: 5')				
1. <u>Echinochloa crusgalli</u>	<u>60</u>	<u>yes</u>	<u>FACW</u>	
2. <u>Artemisia biennis</u>	<u>40</u>	<u>yes</u>	<u>FAC</u>	
3. _____	_____	_____	_____	
4. _____	_____	_____	_____	
5. _____	_____	_____	_____	
6. _____	_____	_____	_____	
7. _____	_____	_____	_____	
8. _____	_____	_____	_____	
9. _____	_____	_____	_____	
10. _____	_____	_____	_____	
= Total Cover				
Woody Vine Stratum (Plot Size: _____)				
1. _____	_____	_____	_____	
2. _____	_____	_____	_____	
= Total Cover				
% Bare Ground in Herb Stratum <u>0</u>				
Hydrophytic Vegetation Present? Yes <input checked="" type="checkbox"/> No <input type="checkbox"/>				
Remarks:				

SOIL

Sampling Point: 5-w

Profile Description: (Describe to the depth needed to document the indicator or confirm the absence of indicators.)

Depth (inches)	Matrix		Redox Features				Texture	Remarks
	Color (moist)	%	Color (Moist)	%	Type ¹	Loc ²		
0-8	10YR 2/1	100					sil	
8-18+	2.5Y 4/1	80	7.5YR 5/6	20	c	m	sil	

¹Type: C= Concentration, D=Depletion, RM=Reduced Matrix, CS=Covered or Coated Sand Grains. ²Location: PL=Pore Lining, M=Matrix

Hydric Soil Indicators: (Applicable to all LRRs, unless otherwise noted.)

- Histosol (A1)
- Histic Epipedon (A2)
- Black Histic (A3)
- Hydrogen Sulfide (A4)
- Stratified Layers (A5) (LRR F)
- 1 cm Muck (A9) (LRR F, G, H)
- Depleted Below Dark Surface (A11)
- Thick Dark Surface (A12)
- Sandy Mucky Mineral (S1)
- 2.5 CM Mucky Peat or Peat (S2)(LRR G, H)
- 5 cm Mucky Peat or Peat (S3) (LRR F)
- Sandy Gleyed Matrix (S4)
- Sandy Redox (S5)
- Stripped Matrix (S6)
- Loamy Mucky Mineral (F1)
- Loamy Gleyed Matrix (F2)
- Depleted Matrix (F3)
- Redox Dark Surface (F6)
- Depleted Dark Surface (F7)
- Redox Depressions (F8)
- High Plains Depressions (F16)

Indicators for Problematic Hydric Soils³:

- 1 cm Muck (A9) (LRR I, J)
- Coast Prairie Redox (A16) (LRR F, G, H)
- Dark Surface (S7) (LRR G)
- High Plains Depressions (F16)
- (LRR H outside of MLRA 72 & 73)**
- Reduced Vertic (F18)
- Red Parent Material (TF2)
- Very Shallow Dark Surface (TF 12)
- Other (Explain in Remarks)

³Indicators of hydrophytic vegetation and wetland hydrology must be present, unless disturbed or problematic.

Restrictive Layer (if present):

Type: _____
Depth (Inches): _____

Hydric Soils Present? Yes No

Remarks:

HYDROLOGY

Wetland Hydrology Indicators:

Primary Indicators (minimum of one required; check all that apply)

- Surface Water (A1)
- High Water Table (A2)
- Saturation (A3)
- Water Marks (B1)
- Sediment Deposits (B2)
- Drift Deposits (B3)
- Algal Mat or Crust (B4)
- Iron Deposits (B5)
- Inundation Visible on Aerial Imagery (B7)
- Water-Stained Leaves (B9)
- Salt Crust (B11)
- Aquatic Invertebrates (B13)
- Hydrogen Sulfide Odor (C1)
- Dry Season Water Table (C2)
- Oxidized Rhizospheres along Living Roots (C3) (where not tilled)
- Presence of Reduced Iron (C4)
- Thin Muck Surface (C7)
- Other (Explain in Remarks)

Secondary Indicators (2 or more required)

- Surface Soil Cracks (B6)
- Sparsely Vegetated Concave Surface (B8)
- Drainage Patterns (B10)
- Oxidized Rhizospheres along Living Roots (C3) (where tilled)
- Crayfish Burrows (C8)
- Saturation Visible on Aerial Imagery (C9)
- Geomorphic Position (D2)
- FAC-Neutral Test (D5)
- Frost-Heave Hummocks (D7) (LRR F)

Field Observations:

Surface Water Present? Yes No Depth (inches): 12
 Water Table Present? Yes No Depth (inches): 0
 Saturation Present? (includes capillary fringe) Yes No Depth (inches): 0

Wetland Hydrology Present? Yes No

Describe Recorded Data (stream gauge, monitoring well, aerial photos, previous inspections), if available:

Remarks:

surface water in interior

WETLAND DETERMINATION DATA FORM – Great Plains Region

Project Site: Grenora Station City/County: Williams Sampling Date: 8/24/2011
 Applicant/Owner: Enbridge State: ND Sampling Point: 5-u
 Investigator(s): GWM Section, Township, Range: 14, 159, 103
 Landform (hillslope, terrace, etc.): toeslope Local relief (concave, convex, none): plane Slope (%): 2
 Subregion (LRR): E Lat: 48.597895N Long: -103.958790W Datum: NAD 83
 Soil Map Unit Name: 2032 - Zahl-Williams loams 6 to 9 percent slopes NWI classification: none

Are climatic / hydrologic conditions on the site typical for this time of year? Yes No (If no, explain in Remarks.)
 Are Vegetation , Soil , or Hydrology , significantly disturbed? Are "Normal Circumstances" present? Yes No
 Are Vegetation , Soil , or Hydrology , naturally problematic? (If needed, explain any answers in Remarks.)

SUMMARY OF FINDINGS – Attach site map showing sampling point locations, transects, important features, etc.

Hydrophytic Vegetation Present?	Yes <input type="checkbox"/>	No <input checked="" type="checkbox"/>	Is the Sampling Area within a Wetland? Yes <input type="checkbox"/> No <input checked="" type="checkbox"/>
Hydric Soil Present?	Yes <input type="checkbox"/>	No <input checked="" type="checkbox"/>	
Wetland Hydrology Present?	Yes <input type="checkbox"/>	No <input checked="" type="checkbox"/>	
Remarks: upland comparison point above hydric boundary			

VEGETATION – Use scientific names of plants

Tree Stratum (Plot Size: _____)	Absolute % Cover	Dominant Species?	Indicator Status	Dominance Test Worksheet:
1. _____	_____	_____	_____	Number of Dominant Species That Are OBL, FACW, or FAC: <u>0</u> (A) Total Number of Dominant Species Across All Strata: <u>1</u> (B) Percent of Dominant Species That Are OBL, FACW, or FAC: <u>0</u> (A/B)
2. _____	_____	_____	_____	
3. _____	_____	_____	_____	
4. _____	_____	_____	_____	
= Total Cover				Prevalence Index worksheet: Total % Cover of: Multiply by: OBL species _____ x1 = _____ FACW species _____ x2 = _____ FAC species _____ x3 = _____ FACU species _____ x4 = _____ UPL species _____ x5 = _____ Column Totals: _____ (A) _____ (B) Prevalence Index = B/A = _____
Sapling/Shrub Stratum (Plot Size: _____)				
1. _____	_____	_____	_____	
2. _____	_____	_____	_____	
3. _____	_____	_____	_____	
4. _____	_____	_____	_____	
5. _____	_____	_____	_____	
= Total Cover				
Herb Stratum (Plot Size: 5')				
1. <u>Setaria glauca</u>	<u>80</u>	<u>yes</u>	<u>FACU</u>	
2. _____	_____	_____	_____	
3. _____	_____	_____	_____	
4. _____	_____	_____	_____	
5. _____	_____	_____	_____	
6. _____	_____	_____	_____	
7. _____	_____	_____	_____	
8. _____	_____	_____	_____	
9. _____	_____	_____	_____	
10. _____	_____	_____	_____	
= Total Cover				
Woody Vine Stratum (Plot Size: _____)				
1. _____	_____	_____	_____	
2. _____	_____	_____	_____	
= Total Cover				
% Bare Ground in Herb Stratum <u>20</u>				
Hydrophytic Vegetation Present? Yes <input type="checkbox"/> No <input checked="" type="checkbox"/>				
Remarks:				

SOIL

Sampling Point: 5-u

Profile Description: (Describe to the depth needed to document the indicator or confirm the absence of indicators.)

Depth (inches)	Matrix		Redox Features				Texture	Remarks
	Color (moist)	%	Color (Moist)	%	Type ¹	Loc ²		
0-6	10YR 3/1	100	_____	_____	_____	_____	sil	_____
6-15+	10 YR 3/3	100	_____	_____	_____	_____	sil	_____
_____	_____	_____	_____	_____	_____	_____	_____	_____
_____	_____	_____	_____	_____	_____	_____	_____	_____
_____	_____	_____	_____	_____	_____	_____	_____	_____
_____	_____	_____	_____	_____	_____	_____	_____	_____

¹Type: C= Concentration, D=Depletion, RM=Reduced Matrix, CS=Covered or Coated Sand Grains. ²Location: PL=Pore Lining, M=Matrix

Hydric Soil Indicators: (Applicable to all LRRs, unless otherwise noted.)

- Histosol (A1)
- Histic Epipedon (A2)
- Black Histic (A3)
- Hydrogen Sulfide (A4)
- Stratified Layers (A5) **(LRR F)**
- 1 cm Muck (A9) **(LRR F, G, H)**
- Depleted Below Dark Surface (A11)
- Thick Dark Surface (A12)
- Sandy Mucky Mineral (S1)
- 2.5 CM Mucky Peat or Peat (S2) **(LRR G, H)**
- 5 cm Mucky Peat or Peat (S3) **(LRR F)**
- Sandy Gleyed Matrix (S4)
- Sandy Redox (S5)
- Stripped Matrix (S6)
- Loamy Mucky Mineral (F1)
- Loamy Gleyed Matrix (F2)
- Depleted Matrix (F3)
- Redox Dark Surface (F6)
- Depleted Dark Surface (F7)
- Redox Depressions (F8)
- High Plains Depressions (F16) **(MLRA 72 & 73 of LRR H)**

Indicators for Problematic Hydric Soils³:

- 1 cm Muck (A9) **(LRR I, J)**
- Coast Prairie Redox (A16) **(LRR F, G, H)**
- Dark Surface (S7) **(LRR G)**
- High Plains Depressions (F16) **(LRR H outside of MLRA 72 & 73)**
- Reduced Vertic (F18)
- Red Parent Material (TF2)
- Very Shallow Dark Surface (TF 12)
- Other (Explain in Remarks)

³Indicators of hydrophytic vegetation and wetland hydrology must be present, unless disturbed or problematic.

Restrictive Layer (if present):

Type: _____
Depth (Inches): _____

Hydric Soils Present? Yes No

Remarks:

HYDROLOGY

Wetland Hydrology Indicators:

Primary Indicators (minimum of one required; check all that apply)

- Surface Water (A1)
- High Water Table (A2)
- Saturation (A3)
- Water Marks (B1)
- Sediment Deposits (B2)
- Drift Deposits (B3)
- Algal Mat or Crust (B4)
- Iron Deposits (B5)
- Inundation Visible on Aerial Imagery (B7)
- Water-Stained Leaves (B9)
- Salt Crust (B11)
- Aquatic Invertebrates (B13)
- Hydrogen Sulfide Odor (C1)
- Dry Season Water Table (C2)
- Oxidized Rhizospheres along Living Roots (C3) **(where not tilled)**
- Presence of Reduced Iron (C4)
- Thin Muck Surface (C7)
- Other (Explain in Remarks)

Secondary Indicators (2 or more required)

- Surface Soil Cracks (B6)
- Sparsely Vegetated Concave Surface (B8)
- Drainage Patterns (B10)
- Oxidized Rhizospheres along Living Roots (C3) **(where tilled)**
- Crayfish Burrows (C8)
- Saturation Visible on Aerial Imagery (C9)
- Geomorphic Position (D2)
- FAC-Neutral Test (D5)
- Frost-Heave Hummocks (D7) **(LRR F)**

Field Observations:

Surface Water Present? Yes No Depth (inches): _____
 Water Table Present? Yes No Depth (inches): _____
 Saturation Present? (includes capillary fringe) Yes No Depth (inches): _____

Wetland Hydrology Present? Yes No

Describe Recorded Data (stream gauge, monitoring well, aerial photos, previous inspections), if available:

Remarks:

WETLAND DETERMINATION DATA FORM – Great Plains Region

Project Site: Grenora Station City/County: Williams Sampling Date: 8/24/2011
 Applicant/Owner: Enbridge State: ND Sampling Point: 6-w
 Investigator(s): GWM Section, Township, Range: 14, 159, 103
 Landform (hillslope, terrace, etc.): depression Local relief (concave, convex, none): Concave Slope (%): 1
 Subregion (LRR): E Lat: 48.603471N Long: -103.959967W Datum: NAD 83
 Soil Map Unit Name: 2032 - Zahl-Williams loams 6 to 9 percent slopes NWI classification: none

Are climatic / hydrologic conditions on the site typical for this time of year? Yes No (If no, explain in Remarks.)
 Are Vegetation , Soil , or Hydrology , significantly disturbed? Are "Normal Circumstances" present? Yes No
 Are Vegetation , Soil , or Hydrology , naturally problematic? (If needed, explain any answers in Remarks.)

SUMMARY OF FINDINGS – Attach site map showing sampling point locations, transects, important features, etc.

Hydrophytic Vegetation Present?	Yes <input checked="" type="checkbox"/>	No <input type="checkbox"/>	Is the Sampling Area within a Wetland? Yes <input checked="" type="checkbox"/> No <input type="checkbox"/>
Hydric Soil Present?	Yes <input checked="" type="checkbox"/>	No <input type="checkbox"/>	
Wetland Hydrology Present?	Yes <input checked="" type="checkbox"/>	No <input type="checkbox"/>	
Remarks: Shallow depression wetland in cultivated field.			

VEGETATION – Use scientific names of plants

Tree Stratum (Plot Size: _____)	Absolute % Cover	Dominant Species?	Indicator Status	Dominance Test Worksheet:
1. _____	_____	_____	_____	Number of Dominant Species That Are OBL, FACW, or FAC: <u>2</u> (A) Total Number of Dominant Species Across All Strata: <u>3</u> (B) Percent of Dominant Species That Are OBL, FACW, or FAC: <u>67</u> (A/B)
2. _____	_____	_____	_____	
3. _____	_____	_____	_____	
4. _____	_____	_____	_____	
= Total Cover				Prevalence Index worksheet: Total % Cover of: Multiply by: OBL species _____ x1 = _____ FACW species _____ x2 = _____ FAC species _____ x3 = _____ FACU species _____ x4 = _____ UPL species _____ x5 = _____ Column Totals: _____ (A) _____ (B) Prevalence Index = B/A = _____
<u>Sapling/Shrub Stratum</u> (Plot Size: _____)				
1. _____	_____	_____	_____	
2. _____	_____	_____	_____	
3. _____	_____	_____	_____	
4. _____	_____	_____	_____	
5. _____	_____	_____	_____	
= Total Cover				
<u>Herb Stratum</u> (Plot Size: <u>5'</u>)				
1. <u>Echinochloa crusgalli</u>	<u>50</u>	<u>yes</u>	<u>FACW</u>	
2. <u>Artemisia biennis</u>	<u>20</u>	<u>yes</u>	<u>FAC</u>	
3. <u>Setaria glauca</u>	<u>20</u>	<u>yes</u>	<u>FACU</u>	
4. _____	_____	_____	_____	
5. _____	_____	_____	_____	
6. _____	_____	_____	_____	
7. _____	_____	_____	_____	
8. _____	_____	_____	_____	
9. _____	_____	_____	_____	
10. _____	_____	_____	_____	
<u>90</u>			= Total Cover	
<u>Woody Vine Stratum</u> (Plot Size: _____)				
1. _____	_____	_____	_____	
2. _____	_____	_____	_____	
_____			= Total Cover	
% Bare Ground in Herb Stratum <u>10</u>				
Hydrophytic Vegetation Present? Yes <input checked="" type="checkbox"/> No <input type="checkbox"/>				
Remarks:				

SOIL

Sampling Point: 6-w

Profile Description: (Describe to the depth needed to document the indicator or confirm the absence of indicators.)

Depth (inches)	Matrix		Redox Features				Texture	Remarks
	Color (moist)	%	Color (Moist)	%	Type ¹	Loc ²		
0-6	10YR 2/1	100					sil	
6-18+	2.5Y 4/1	90	7.5YR 5/6	10	c	m	sil	

¹Type: C= Concentration, D=Depletion, RM=Reduced Matrix, CS=Covered or Coated Sand Grains. ²Location: PL=Pore Lining, M=Matrix

Hydric Soil Indicators: (Applicable to all LRRs, unless otherwise noted.)

- Histosol (A1)
- Histic Epipedon (A2)
- Black Histic (A3)
- Hydrogen Sulfide (A4)
- Stratified Layers (A5) **(LRR F)**
- 1 cm Muck (A9) **(LRR F, G, H)**
- Depleted Below Dark Surface (A11)
- Thick Dark Surface (A12)
- Sandy Mucky Mineral (S1)
- 2.5 CM Mucky Peat or Peat (S2) **(LRR G, H)**
- 5 cm Mucky Peat or Peat (S3) **(LRR F)**
- Sandy Gleyed Matrix (S4)
- Sandy Redox (S5)
- Stripped Matrix (S6)
- Loamy Mucky Mineral (F1)
- Loamy Gleyed Matrix (F2)
- Depleted Matrix (F3)
- Redox Dark Surface (F6)
- Depleted Dark Surface (F7)
- Redox Depressions (F8)
- High Plains Depressions (F16)

Indicators for Problematic Hydric Soils³:

- 1 cm Muck (A9) **(LRR I, J)**
- Coast Prairie Redox (A16) **(LRR F, G, H)**
- Dark Surface (S7) **(LRR G)**
- High Plains Depressions (F16)
- (LRR H outside of MLRA 72 & 73)**
- Reduced Vertic (F18)
- Red Parent Material (TF2)
- Very Shallow Dark Surface (TF 12)
- Other (Explain in Remarks)

³Indicators of hydrophytic vegetation and wetland hydrology must be present, unless disturbed or problematic.

Restrictive Layer (if present):

Type: _____
Depth (Inches): _____

Hydric Soils Present? Yes No

Remarks:

Tonka

HYDROLOGY

Wetland Hydrology Indicators:

Primary Indicators (minimum of one required; check all that apply)

- Surface Water (A1)
- High Water Table (A2)
- Saturation (A3)
- Water Marks (B1)
- Sediment Deposits (B2)
- Drift Deposits (B3)
- Algal Mat or Crust (B4)
- Iron Deposits (B5)
- Inundation Visible on Aerial Imagery (B7)
- Water-Stained Leaves (B9)
- Salt Crust (B11)
- Aquatic Invertebrates (B13)
- Hydrogen Sulfide Odor (C1)
- Dry Season Water Table (C2)
- Oxidized Rhizospheres along Living Roots (C3) **(where not tilled)**
- Presence of Reduced Iron (C4)
- Thin Muck Surface (C7)
- Other (Explain in Remarks)

Secondary Indicators (2 or more required)

- Surface Soil Cracks (B6)
- Sparsely Vegetated Concave Surface (B8)
- Drainage Patterns (B10)
- Oxidized Rhizospheres along Living Roots (C3) **(where tilled)**
- Crayfish Burrows (C8)
- Saturation Visible on Aerial Imagery (C9)
- Geomorphic Position (D2)
- FAC-Neutral Test (D5)
- Frost-Heave Hummocks (D7) **(LRR F)**

Field Observations:

Surface Water Present? Yes No Depth (inches): _____
 Water Table Present? Yes No Depth (inches): _____
 Saturation Present? (includes capillary fringe) Yes No Depth (inches): 8

Wetland Hydrology Present? Yes No

Describe Recorded Data (stream gauge, monitoring well, aerial photos, previous inspections), if available:

Remarks:

WETLAND DETERMINATION DATA FORM – Great Plains Region

Project Site: Grenora Station City/County: Williams Sampling Date: 8/24/2011
 Applicant/Owner: Enbridge State: ND Sampling Point: 6-u
 Investigator(s): GWM Section, Township, Range: 14, 159, 103
 Landform (hillslope, terrace, etc.): toeslope Local relief (concave, convex, none): plane Slope (%): 2
 Subregion (LRR): E Lat: 48.603400N Long: -103.959964W Datum: NAD 83
 Soil Map Unit Name: 2032 - Zahl-Williams loams 6 to 9 percent slopes NWI classification: none

Are climatic / hydrologic conditions on the site typical for this time of year? Yes No (If no, explain in Remarks.)
 Are Vegetation , Soil , or Hydrology , significantly disturbed? Are "Normal Circumstances" present? Yes No
 Are Vegetation , Soil , or Hydrology , naturally problematic? (If needed, explain any answers in Remarks.)

SUMMARY OF FINDINGS – Attach site map showing sampling point locations, transects, important features, etc.

Hydrophytic Vegetation Present?	Yes <input type="checkbox"/>	No <input checked="" type="checkbox"/>	Is the Sampling Area within a Wetland? Yes <input type="checkbox"/> No <input checked="" type="checkbox"/>
Hydric Soil Present?	Yes <input type="checkbox"/>	No <input checked="" type="checkbox"/>	
Wetland Hydrology Present?	Yes <input type="checkbox"/>	No <input checked="" type="checkbox"/>	
Remarks: upland comparison point above hydric boundary			

VEGETATION – Use scientific names of plants

Tree Stratum (Plot Size: _____)	Absolute % Cover	Dominant Species?	Indicator Status	Dominance Test Worksheet:
1. _____	_____	_____	_____	Number of Dominant Species That Are OBL, FACW, or FAC: <u>0</u> (A) Total Number of Dominant Species Across All Strata: <u>1</u> (B) Percent of Dominant Species That Are OBL, FACW, or FAC: <u>0</u> (A/B)
2. _____	_____	_____	_____	
3. _____	_____	_____	_____	
4. _____	_____	_____	_____	
= Total Cover				Prevalence Index worksheet: Total % Cover of: Multiply by: OBL species _____ x1 = _____ FACW species _____ x2 = _____ FAC species _____ x3 = _____ FACU species _____ x4 = _____ UPL species _____ x5 = _____ Column Totals: _____ (A) _____ (B) Prevalence Index = B/A = _____
Sapling/Shrub Stratum (Plot Size: _____)				
1. _____	_____	_____	_____	
2. _____	_____	_____	_____	
3. _____	_____	_____	_____	
4. _____	_____	_____	_____	
5. _____	_____	_____	_____	
= Total Cover				
Herb Stratum (Plot Size: <u>5'</u>)				
1. <u>Setaria glauca</u>	<u>50</u>	<u>yes</u>	<u>FACU</u>	
2. <u>Conyza canadensis</u>	<u>30</u>	<u>yes</u>	<u>FACU</u>	
3. <u>Echinochloa crusgalli</u>	<u>20</u>	<u>yes</u>	<u>FACW</u>	
4. _____	_____	_____	_____	
5. _____	_____	_____	_____	
6. _____	_____	_____	_____	
7. _____	_____	_____	_____	
8. _____	_____	_____	_____	
9. _____	_____	_____	_____	
10. _____	_____	_____	_____	
100			= Total Cover	
Woody Vine Stratum (Plot Size: _____)				
1. _____	_____	_____	_____	
2. _____	_____	_____	_____	
_____			= Total Cover	
% Bare Ground in Herb Stratum <u>0</u>				
Hydrophytic Vegetation Present? Yes <input type="checkbox"/> No <input checked="" type="checkbox"/>				

Remarks:

SOIL

Sampling Point: 6-u

Profile Description: (Describe to the depth needed to document the indicator or confirm the absence of indicators.)

Depth (inches)	Matrix		Redox Features				Texture	Remarks
	Color (moist)	%	Color (Moist)	%	Type ¹	Loc ²		
0-4	10YR 3/2	100	_____	_____	_____	_____	sil	_____
4-12+	10 YR 3/3	100	_____	_____	_____	_____	sil	_____
_____	_____	_____	_____	_____	_____	_____	_____	_____
_____	_____	_____	_____	_____	_____	_____	_____	_____
_____	_____	_____	_____	_____	_____	_____	_____	_____
_____	_____	_____	_____	_____	_____	_____	_____	_____

¹Type: C= Concentration, D=Depletion, RM=Reduced Matrix, CS=Covered or Coated Sand Grains. ²Location: PL=Pore Lining, M=Matrix

Hydric Soil Indicators: (Applicable to all LRRs, unless otherwise noted.)

- Histosol (A1)
- Histic Epipedon (A2)
- Black Histic (A3)
- Hydrogen Sulfide (A4)
- Stratified Layers (A5) **(LRR F)**
- 1 cm Muck (A9) **(LRR F, G, H)**
- Depleted Below Dark Surface (A11)
- Thick Dark Surface (A12)
- Sandy Mucky Mineral (S1)
- 2.5 CM Mucky Peat or Peat (S2) **(LRR G, H)**
- 5 cm Mucky Peat or Peat (S3) **(LRR F)**
- Sandy Gleyed Matrix (S4)
- Sandy Redox (S5)
- Stripped Matrix (S6)
- Loamy Mucky Mineral (F1)
- Loamy Gleyed Matrix (F2)
- Depleted Matrix (F3)
- Redox Dark Surface (F6)
- Depleted Dark Surface (F7)
- Redox Depressions (F8)
- High Plains Depressions (F16) **(MLRA 72 & 73 of LRR H)**

Indicators for Problematic Hydric Soils³:

- 1 cm Muck (A9) **(LRR I, J)**
- Coast Prairie Redox (A16) **(LRR F, G, H)**
- Dark Surface (S7) **(LRR G)**
- High Plains Depressions (F16) **(LRR H outside of MLRA 72 & 73)**
- Reduced Vertic (F18)
- Red Parent Material (TF2)
- Very Shallow Dark Surface (TF 12)
- Other (Explain in Remarks)

³Indicators of hydrophytic vegetation and wetland hydrology must be present, unless disturbed or problematic.

Restrictive Layer (if present):

Type: _____
Depth (Inches): _____

Hydric Soils Present? Yes No

Remarks:

HYDROLOGY

Wetland Hydrology Indicators:

Primary Indicators (minimum of one required; check all that apply)

- Surface Water (A1)
- High Water Table (A2)
- Saturation (A3)
- Water Marks (B1)
- Sediment Deposits (B2)
- Drift Deposits (B3)
- Algal Mat or Crust (B4)
- Iron Deposits (B5)
- Inundation Visible on Aerial Imagery (B7)
- Water-Stained Leaves (B9)
- Salt Crust (B11)
- Aquatic Invertebrates (B13)
- Hydrogen Sulfide Odor (C1)
- Dry Season Water Table (C2)
- Oxidized Rhizospheres along Living Roots (C3) **(where not tilled)**
- Presence of Reduced Iron (C4)
- Thin Muck Surface (C7)
- Other (Explain in Remarks)

Secondary Indicators (2 or more required)

- Surface Soil Cracks (B6)
- Sparsely Vegetated Concave Surface (B8)
- Drainage Patterns (B10)
- Oxidized Rhizospheres along Living Roots (C3) **(where tilled)**
- Crayfish Burrows (C8)
- Saturation Visible on Aerial Imagery (C9)
- Geomorphic Position (D2)
- FAC-Neutral Test (D5)
- Frost-Heave Hummocks (D7) **(LRR F)**

Field Observations:

Surface Water Present? Yes No Depth (inches): _____
 Water Table Present? Yes No Depth (inches): _____
 Saturation Present? (includes capillary fringe) Yes No Depth (inches): _____

Wetland Hydrology Present? Yes No

Describe Recorded Data (stream gauge, monitoring well, aerial photos, previous inspections), if available:

Remarks:

WETLAND DETERMINATION DATA FORM – Great Plains Region

Project Site: Grenora Station City/County: Williams Sampling Date: 8/24/2011
 Applicant/Owner: Enbridge State: ND Sampling Point: 7-w
 Investigator(s): GWM Section, Township, Range: 14, 159, 103
 Landform (hillslope, terrace, etc.): depression Local relief (concave, convex, none): Concave Slope (%): 1
 Subregion (LRR): E Lat: 48.599954N Long: -103.951427W Datum: NAD 83
 Soil Map Unit Name: 2032 - Zahl-Williams loams 6 to 9 percent slopes NWI classification: none

Are climatic / hydrologic conditions on the site typical for this time of year? Yes No (If no, explain in Remarks.)
 Are Vegetation , Soil , or Hydrology , significantly disturbed? Are "Normal Circumstances" present? Yes No
 Are Vegetation , Soil , or Hydrology , naturally problematic? (If needed, explain any answers in Remarks.)

SUMMARY OF FINDINGS – Attach site map showing sampling point locations, transects, important features, etc.

Hydrophytic Vegetation Present?	Yes <input checked="" type="checkbox"/>	No <input type="checkbox"/>	Is the Sampling Area within a Wetland? Yes <input checked="" type="checkbox"/> No <input type="checkbox"/>
Hydric Soil Present?	Yes <input checked="" type="checkbox"/>	No <input type="checkbox"/>	
Wetland Hydrology Present?	Yes <input checked="" type="checkbox"/>	No <input type="checkbox"/>	
Remarks: Shallow depression wetland in cultivated field.			

VEGETATION – Use scientific names of plants

Tree Stratum (Plot Size: _____)	Absolute % Cover	Dominant Species?	Indicator Status	Dominance Test Worksheet:																
1. _____	_____	_____	_____	Number of Dominant Species That Are OBL, FACW, or FAC: _____ (A) Total Number of Dominant Species Across All Strata: _____ (B) Percent of Dominant Species That Are OBL, FACW, or FAC: _____ (A/B)																
2. _____	_____	_____	_____																	
3. _____	_____	_____	_____																	
4. _____	_____	_____	_____																	
= Total Cover				Prevalence Index worksheet: <table style="width: 100%; border: none;"> <tr> <td style="text-align: center;"><u>Total % Cover of:</u></td> <td style="text-align: center;"><u>Multiply by:</u></td> </tr> <tr> <td>OBL species _____</td> <td>x1 = _____</td> </tr> <tr> <td>FACW species _____</td> <td>x2 = _____</td> </tr> <tr> <td>FAC species _____</td> <td>x3 = _____</td> </tr> <tr> <td>FACU species _____</td> <td>x4 = _____</td> </tr> <tr> <td>UPL species _____</td> <td>x5 = _____</td> </tr> <tr> <td>Column Totals: _____</td> <td>(A) _____ (B) _____</td> </tr> <tr> <td colspan="2" style="text-align: center;">Prevalence Index = B/A = _____</td> </tr> </table>	<u>Total % Cover of:</u>	<u>Multiply by:</u>	OBL species _____	x1 = _____	FACW species _____	x2 = _____	FAC species _____	x3 = _____	FACU species _____	x4 = _____	UPL species _____	x5 = _____	Column Totals: _____	(A) _____ (B) _____	Prevalence Index = B/A = _____	
<u>Total % Cover of:</u>	<u>Multiply by:</u>																			
OBL species _____	x1 = _____																			
FACW species _____	x2 = _____																			
FAC species _____	x3 = _____																			
FACU species _____	x4 = _____																			
UPL species _____	x5 = _____																			
Column Totals: _____	(A) _____ (B) _____																			
Prevalence Index = B/A = _____																				
Sapling/Shrub Stratum (Plot Size: _____)																				
1. _____	_____	_____	_____																	
2. _____	_____	_____	_____																	
3. _____	_____	_____	_____																	
4. _____	_____	_____	_____																	
5. _____	_____	_____	_____																	
= Total Cover																				
Herb Stratum (Plot Size: 5')																				
1. <u>Echinochloa crusgalli</u>	<u>10</u>	<u>yes</u>	<u>FACW</u>																	
2. _____	_____	_____	_____																	
3. _____	_____	_____	_____																	
4. _____	_____	_____	_____																	
5. _____	_____	_____	_____																	
6. _____	_____	_____	_____																	
7. _____	_____	_____	_____																	
8. _____	_____	_____	_____																	
9. _____	_____	_____	_____																	
10. _____	_____	_____	_____																	
= Total Cover																				
Woody Vine Stratum (Plot Size: _____)																				
1. _____	_____	_____	_____																	
2. _____	_____	_____	_____																	
= Total Cover																				
% Bare Ground in Herb Stratum <u>90</u>																				
Hydrophytic Vegetation Present? Yes <input checked="" type="checkbox"/> No <input type="checkbox"/>																				
Remarks:																				

SOIL

Sampling Point: 7-w

Profile Description: (Describe to the depth needed to document the indicator or confirm the absence of indicators.)

Depth (inches)	Matrix		Redox Features				Texture	Remarks
	Color (moist)	%	Color (Moist)	%	Type ¹	Loc ²		
0-4	10YR 2/1	100					sicl	
4-8	10YR 2/1	95	7.5YR 5/6	5	c	m	sicl	
8-16+	2.5Y 4/1	90	7.5YR 5/6 10	10	c	m	sicl	
_____	_____	_____	_____	_____	_____	_____	_____	_____
_____	_____	_____	_____	_____	_____	_____	_____	_____
_____	_____	_____	_____	_____	_____	_____	_____	_____
_____	_____	_____	_____	_____	_____	_____	_____	_____

¹Type: C= Concentration, D=Depletion, RM=Reduced Matrix, CS=Covered or Coated Sand Grains. ²Location: PL=Pore Lining, M=Matrix

Hydric Soil Indicators: (Applicable to all LRRs, unless otherwise noted.)

- Histosol (A1)
- Histic Epipedon (A2)
- Black Histic (A3)
- Hydrogen Sulfide (A4)
- Stratified Layers (A5) **(LRR F)**
- 1 cm Muck (A9) **(LRR F, G, H)**
- Depleted Below Dark Surface (A11)
- Thick Dark Surface (A12)
- Sandy Mucky Mineral (S1)
- 2.5 CM Mucky Peat or Peat (S2) **(LRR G, H)**
- 5 cm Mucky Peat or Peat (S3) **(LRR F)**
- Sandy Gleyed Matrix (S4)
- Sandy Redox (S5)
- Stripped Matrix (S6)
- Loamy Mucky Mineral (F1)
- Loamy Gleyed Matrix (F2)
- Depleted Matrix (F3)
- Redox Dark Surface (F6)
- Depleted Dark Surface (F7)
- Redox Depressions (F8)
- High Plains Depressions (F16) **(MLRA 72 & 73 of LRR H)**

Indicators for Problematic Hydric Soils³:

- 1 cm Muck (A9) **(LRR I, J)**
- Coast Prairie Redox (A16) **(LRR F, G, H)**
- Dark Surface (S7) **(LRR G)**
- High Plains Depressions (F16) **(LRR H outside of MLRA 72 & 73)**
- Reduced Vertic (F18)
- Red Parent Material (TF2)
- Very Shallow Dark Surface (TF 12)
- Other (Explain in Remarks)

³Indicators of hydrophytic vegetation and wetland hydrology must be present, unless disturbed or problematic.

Restrictive Layer (if present):

Type: _____
Depth (Inches): _____

Hydric Soils Present? Yes No

Remarks:

Tonka

HYDROLOGY

Wetland Hydrology Indicators:

Primary Indicators (minimum of one required; check all that apply)

- Surface Water (A1)
- High Water Table (A2)
- Saturation (A3)
- Water Marks (B1)
- Sediment Deposits (B2)
- Drift Deposits (B3)
- Algal Mat or Crust (B4)
- Iron Deposits (B5)
- Inundation Visible on Aerial Imagery (B7)
- Water-Stained Leaves (B9)
- Salt Crust (B11)
- Aquatic Invertebrates (B13)
- Hydrogen Sulfide Odor (C1)
- Dry Season Water Table (C2)
- Oxidized Rhizospheres along Living Roots (C3) **(where not tilled)**
- Presence of Reduced Iron (C4)
- Thin Muck Surface (C7)
- Other (Explain in Remarks)

Secondary Indicators (2 or more required)

- Surface Soil Cracks (B6)
- Sparsely Vegetated Concave Surface (B8)
- Drainage Patterns (B10)
- Oxidized Rhizospheres along Living Roots (C3) **(where tilled)**
- Crayfish Burrows (C8)
- Saturation Visible on Aerial Imagery (C9)
- Geomorphic Position (D2)
- FAC-Neutral Test (D5)
- Frost-Heave Hummocks (D7) **(LRR F)**

Field Observations:

Surface Water Present? Yes No Depth (inches): 1
 Water Table Present? Yes No Depth (inches): 0
 Saturation Present? (includes capillary fringe) Yes No Depth (inches): 0

Wetland Hydrology Present? Yes No

Describe Recorded Data (stream gauge, monitoring well, aerial photos, previous inspections), if available:

Remarks:

WETLAND DETERMINATION DATA FORM – Great Plains Region

Project Site: Grenora Station City/County: Williams Sampling Date: 8/24/2011
 Applicant/Owner: Enbridge State: ND Sampling Point: 7-u
 Investigator(s): GWM Section, Township, Range: 14, 159, 103
 Landform (hillslope, terrace, etc.): toeslope Local relief (concave, convex, none): plane Slope (%): 2
 Subregion (LRR): E Lat: 48.599940N Long: -103.951438W Datum: NAD 83
 Soil Map Unit Name: 2032 - Zahl-Williams loams 6 to 9 percent slopes NWI classification: none

Are climatic / hydrologic conditions on the site typical for this time of year? Yes No (If no, explain in Remarks.)
 Are Vegetation , Soil , or Hydrology , significantly disturbed? Are "Normal Circumstances" present? Yes No
 Are Vegetation , Soil , or Hydrology , naturally problematic? (If needed, explain any answers in Remarks.)

SUMMARY OF FINDINGS – Attach site map showing sampling point locations, transects, important features, etc.

Hydrophytic Vegetation Present?	Yes <input checked="" type="checkbox"/>	No <input type="checkbox"/>	Is the Sampling Area within a Wetland? Yes <input type="checkbox"/> No <input checked="" type="checkbox"/>
Hydric Soil Present?	Yes <input type="checkbox"/>	No <input checked="" type="checkbox"/>	
Wetland Hydrology Present?	Yes <input type="checkbox"/>	No <input checked="" type="checkbox"/>	
Remarks: upland comparison point above hydric boundary			

VEGETATION – Use scientific names of plants

Tree Stratum (Plot Size: _____)	Absolute % Cover	Dominant Species?	Indicator Status	Dominance Test Worksheet:
1. _____	_____	_____	_____	Number of Dominant Species That Are OBL, FACW, or FAC: _____ (A) Total Number of Dominant Species Across All Strata: _____ (B) Percent of Dominant Species That Are OBL, FACW, or FAC: _____ (A/B)
2. _____	_____	_____	_____	
3. _____	_____	_____	_____	
4. _____	_____	_____	_____	
= Total Cover				Prevalence Index worksheet: Total % Cover of: Multiply by: OBL species _____ x1 = _____ FACW species _____ x2 = _____ FAC species _____ x3 = _____ FACU species _____ x4 = _____ UPL species _____ x5 = _____ Column Totals: _____ (A) _____ (B) Prevalence Index = B/A = _____
Sapling/Shrub Stratum (Plot Size: _____)				
1. _____	_____	_____	_____	
2. _____	_____	_____	_____	
3. _____	_____	_____	_____	
4. _____	_____	_____	_____	
5. _____	_____	_____	_____	
= Total Cover				
Herb Stratum (Plot Size: 5')				
1. <u>Hordeum jubatum</u>	<u>10</u>	<u>yes</u>	<u>FACW</u>	
2. <u>Echinochloa crusgalli</u>	<u>10</u>	<u>yes</u>	<u>FACW</u>	
3. _____	_____	_____	_____	
4. _____	_____	_____	_____	
5. _____	_____	_____	_____	
6. _____	_____	_____	_____	
7. _____	_____	_____	_____	
8. _____	_____	_____	_____	
9. _____	_____	_____	_____	
10. _____	_____	_____	_____	
= Total Cover				
Woody Vine Stratum (Plot Size: _____)				
1. _____	_____	_____	_____	
2. _____	_____	_____	_____	
= Total Cover				
% Bare Ground in Herb Stratum <u>80</u>				
Hydrophytic Vegetation Present? Yes <input checked="" type="checkbox"/> No <input type="checkbox"/>				
Remarks:				

SOIL

Sampling Point: 7-u

Profile Description: (Describe to the depth needed to document the indicator or confirm the absence of indicators.)

Depth (inches)	Matrix		Redox Features				Texture	Remarks
	Color (moist)	%	Color (Moist)	%	Type ¹	Loc ²		
0-6	10YR 2/1	100	_____	_____	_____	_____	sicl	_____
6-12	10YR 3/2	100	_____	_____	_____	_____	sicl	_____
12-16+	2.5Y 4/3	100	_____	_____	_____	_____	sicl	_____
_____	_____	_____	_____	_____	_____	_____	_____	_____
_____	_____	_____	_____	_____	_____	_____	_____	_____
_____	_____	_____	_____	_____	_____	_____	_____	_____
_____	_____	_____	_____	_____	_____	_____	_____	_____

¹Type: C= Concentration, D=Depletion, RM=Reduced Matrix, CS=Covered or Coated Sand Grains. ²Location: PL=Pore Lining, M=Matrix

Hydric Soil Indicators: (Applicable to all LRRs, unless otherwise noted.)

- Histosol (A1)
- Histic Epipedon (A2)
- Black Histic (A3)
- Hydrogen Sulfide (A4)
- Stratified Layers (A5) (LRR F)
- 1 cm Muck (A9) (LRR F, G, H)
- Depleted Below Dark Surface (A11)
- Thick Dark Surface (A12)
- Sandy Mucky Mineral (S1)
- 2.5 CM Mucky Peat or Peat (S2)(LRR G, H)
- 5 cm Mucky Peat or Peat (S3) (LRR F)
- Sandy Gleyed Matrix (S4)
- Sandy Redox (S5)
- Stripped Matrix (S6)
- Loamy Mucky Mineral (F1)
- Loamy Gleyed Matrix (F2)
- Depleted Matrix (F3)
- Redox Dark Surface (F6)
- Depleted Dark Surface (F7)
- Redox Depressions (F8)
- High Plains Depressions (F16)

Indicators for Problematic Hydric Soils³:

- 1 cm Muck (A9) (LRR I, J)
- Coast Prairie Redox (A16) (LRR F, G, H)
- Dark Surface (S7) (LRR G)
- High Plains Depressions (F16)
- (LRR H outside of MLRA 72 & 73)**
- Reduced Vertic (F18)
- Red Parent Material (TF2)
- Very Shallow Dark Surface (TF 12)
- Other (Explain in Remarks)

³Indicators of hydrophytic vegetation and wetland hydrology must be present, unless disturbed or problematic.

Restrictive Layer (if present):

Type: _____
Depth (Inches): _____

Hydric Soils Present? Yes No

Remarks:

HYDROLOGY

Wetland Hydrology Indicators:

Primary Indicators (minimum of one required; check all that apply)

- Surface Water (A1)
- High Water Table (A2)
- Saturation (A3)
- Water Marks (B1)
- Sediment Deposits (B2)
- Drift Deposits (B3)
- Algal Mat or Crust (B4)
- Iron Deposits (B5)
- Inundation Visible on Aerial Imagery (B7)
- Water-Stained Leaves (B9)
- Salt Crust (B11)
- Aquatic Invertebrates (B13)
- Hydrogen Sulfide Odor (C1)
- Dry Season Water Table (C2)
- Oxidized Rhizospheres along Living Roots (C3) (where not tilled)
- Presence of Reduced Iron (C4)
- Thin Muck Surface (C7)
- Other (Explain in Remarks)

Secondary Indicators (2 or more required)

- Surface Soil Cracks (B6)
- Sparsely Vegetated Concave Surface (B8)
- Drainage Patterns (B10)
- Oxidized Rhizospheres along Living Roots (C3) (where tilled)
- Crayfish Burrows (C8)
- Saturation Visible on Aerial Imagery (C9)
- Geomorphic Position (D2)
- FAC-Neutral Test (D5)
- Frost-Heave Hummocks (D7) (LRR F)

Field Observations:

Surface Water Present? Yes No Depth (inches): _____
 Water Table Present? Yes No Depth (inches): _____
 Saturation Present? (includes capillary fringe) Yes No Depth (inches): _____

Wetland Hydrology Present? Yes No

Describe Recorded Data (stream gauge, monitoring well, aerial photos, previous inspections), if available:

Remarks:

WETLAND DETERMINATION DATA FORM – Great Plains Region

Project Site: Grenora Station City/County: Williams Sampling Date: 8/24/2011
 Applicant/Owner: Enbridge State: ND Sampling Point: 8-w
 Investigator(s): GWM Section, Township, Range: 14, 159, 103
 Landform (hillslope, terrace, etc.): depression Local relief (concave, convex, none): Concave Slope (%): 1
 Subregion (LRR): E Lat: 48.599412N Long: -103.950804W Datum: NAD 83
 Soil Map Unit Name: 2032 - Zahl-Williams loams 6 to 9 percent slopes NWI classification: none

Are climatic / hydrologic conditions on the site typical for this time of year? Yes No (If no, explain in Remarks.)
 Are Vegetation , Soil , or Hydrology , significantly disturbed? Are "Normal Circumstances" present? Yes No
 Are Vegetation , Soil , or Hydrology , naturally problematic? (If needed, explain any answers in Remarks.)

SUMMARY OF FINDINGS – Attach site map showing sampling point locations, transects, important features, etc.

Hydrophytic Vegetation Present?	Yes <input checked="" type="checkbox"/>	No <input type="checkbox"/>	Is the Sampling Area within a Wetland? Yes <input checked="" type="checkbox"/> No <input type="checkbox"/>
Hydric Soil Present?	Yes <input checked="" type="checkbox"/>	No <input type="checkbox"/>	
Wetland Hydrology Present?	Yes <input checked="" type="checkbox"/>	No <input type="checkbox"/>	
Remarks: Shallow depression wetland in cultivated field.			

VEGETATION – Use scientific names of plants

Tree Stratum (Plot Size: _____)	Absolute % Cover	Dominant Species?	Indicator Status	Dominance Test Worksheet:
1. _____	_____	_____	_____	Number of Dominant Species That Are OBL, FACW, or FAC: _____ (A) Total Number of Dominant Species Across All Strata: _____ (B) Percent of Dominant Species That Are OBL, FACW, or FAC: _____ (A/B)
2. _____	_____	_____	_____	
3. _____	_____	_____	_____	
4. _____	_____	_____	_____	
= Total Cover				Prevalence Index worksheet: Total % Cover of: Multiply by: OBL species _____ x1 = _____ FACW species _____ x2 = _____ FAC species _____ x3 = _____ FACU species _____ x4 = _____ UPL species _____ x5 = _____ Column Totals: _____ (A) _____ (B) Prevalence Index = B/A = _____
Sapling/Shrub Stratum (Plot Size: _____)				
1. _____	_____	_____	_____	
2. _____	_____	_____	_____	
3. _____	_____	_____	_____	
4. _____	_____	_____	_____	
5. _____	_____	_____	_____	
= Total Cover				
Herb Stratum (Plot Size: 5')				
1. <u>Echinochloa crusgalli</u>	<u>80</u>	<u>yes</u>	<u>FACW</u>	
2. <u>Amaranthus blitoides</u>	<u>10</u>	<u>no</u>	<u>FAC</u>	
3. <u>Artemisia biennis</u>	<u>10</u>	<u>no</u>	<u>FAC</u>	
4. _____	_____	_____	_____	
5. _____	_____	_____	_____	
6. _____	_____	_____	_____	
7. _____	_____	_____	_____	
8. _____	_____	_____	_____	
9. _____	_____	_____	_____	
10. _____	_____	_____	_____	
100			= Total Cover	
Woody Vine Stratum (Plot Size: _____)				
1. _____	_____	_____	_____	
2. _____	_____	_____	_____	
_____			= Total Cover	
% Bare Ground in Herb Stratum <u>0</u>				
Hydrophytic Vegetation Present? Yes <input checked="" type="checkbox"/> No <input type="checkbox"/>				

Remarks:

SOIL

Sampling Point: 8-w

Profile Description: (Describe to the depth needed to document the indicator or confirm the absence of indicators.)

Depth (inches)	Matrix		Redox Features				Texture	Remarks
	Color (moist)	%	Color (Moist)	%	Type ¹	Loc ²		
0-8	10YR 2/1	100					sicl	
8-16+	2.5Y 4/1	90	7.5YR 5/6	10	c	m	sicl	
_____	_____	_____	_____	_____	_____	_____	_____	_____
_____	_____	_____	_____	_____	_____	_____	_____	_____
_____	_____	_____	_____	_____	_____	_____	_____	_____
_____	_____	_____	_____	_____	_____	_____	_____	_____

¹Type: C= Concentration, D=Depletion, RM=Reduced Matrix, CS=Covered or Coated Sand Grains. ²Location: PL=Pore Lining, M=Matrix

Hydric Soil Indicators: (Applicable to all LRRs, unless otherwise noted.)

- Histosol (A1)
- Histic Epipedon (A2)
- Black Histic (A3)
- Hydrogen Sulfide (A4)
- Stratified Layers (A5) (LRR F)
- 1 cm Muck (A9) (LRR F, G, H)
- Depleted Below Dark Surface (A11)
- Thick Dark Surface (A12)
- Sandy Mucky Mineral (S1)
- 2.5 CM Mucky Peat or Peat (S2)(LRR G, H)
- 5 cm Mucky Peat or Peat (S3) (LRR F)
- Sandy Gleyed Matrix (S4)
- Sandy Redox (S5)
- Stripped Matrix (S6)
- Loamy Mucky Mineral (F1)
- Loamy Gleyed Matrix (F2)
- Depleted Matrix (F3)
- Redox Dark Surface (F6)
- Depleted Dark Surface (F7)
- Redox Depressions (F8)
- High Plains Depressions (F16)

Indicators for Problematic Hydric Soils³:

- 1 cm Muck (A9) (LRR I, J)
- Coast Prairie Redox (A16) (LRR F, G, H)
- Dark Surface (S7) (LRR G)
- High Plains Depressions (F16)
- (LRR H outside of MLRA 72 & 73)**
- Reduced Vertic (F18)
- Red Parent Material (TF2)
- Very Shallow Dark Surface (TF 12)
- Other (Explain in Remarks)

³Indicators of hydrophytic vegetation and wetland hydrology must be present, unless disturbed or problematic.

Restrictive Layer (if present):

Type: _____
Depth (Inches): _____

Hydric Soils Present? Yes No

Remarks:

Tonka

HYDROLOGY

Wetland Hydrology Indicators:

Primary Indicators (minimum of one required; check all that apply)

- Surface Water (A1)
- High Water Table (A2)
- Saturation (A3)
- Water Marks (B1)
- Sediment Deposits (B2)
- Drift Deposits (B3)
- Algal Mat or Crust (B4)
- Iron Deposits (B5)
- Inundation Visible on Aerial Imagery (B7)
- Water-Stained Leaves (B9)
- Salt Crust (B11)
- Aquatic Invertebrates (B13)
- Hydrogen Sulfide Odor (C1)
- Dry Season Water Table (C2)
- Oxidized Rhizospheres along Living Roots (C3) (where not tilled)
- Presence of Reduced Iron (C4)
- Thin Muck Surface (C7)
- Other (Explain in Remarks)

Secondary Indicators (2 or more required)

- Surface Soil Cracks (B6)
- Sparsely Vegetated Concave Surface (B8)
- Drainage Patterns (B10)
- Oxidized Rhizospheres along Living Roots (C3) (where tilled)
- Crayfish Burrows (C8)
- Saturation Visible on Aerial Imagery (C9)
- Geomorphic Position (D2)
- FAC-Neutral Test (D5)
- Frost-Heave Hummocks (D7) (LRR F)

Field Observations:

Surface Water Present? Yes No Depth (inches): _____
 Water Table Present? Yes No Depth (inches): _____
 Saturation Present? (includes capillary fringe) Yes No Depth (inches): 0

Wetland Hydrology Present? Yes No

Describe Recorded Data (stream gauge, monitoring well, aerial photos, previous inspections), if available:

Remarks:

Saturation at surface in interior.

WETLAND DETERMINATION DATA FORM – Great Plains Region

Project Site: Grenora Station City/County: Williams Sampling Date: 8/24/2011
 Applicant/Owner: Enbridge State: ND Sampling Point: 8-u
 Investigator(s): GWM Section, Township, Range: 14, 159, 103
 Landform (hillslope, terrace, etc.): toeslope Local relief (concave, convex, none): plane Slope (%): 2
 Subregion (LRR): E Lat: 48.599433N Long: -103.950907W Datum: NAD 83
 Soil Map Unit Name: 2032 - Zahl-Williams loams 6 to 9 percent slopes NWI classification: none

Are climatic / hydrologic conditions on the site typical for this time of year? Yes No (If no, explain in Remarks.)
 Are Vegetation , Soil , or Hydrology , significantly disturbed? Are "Normal Circumstances" present? Yes No
 Are Vegetation , Soil , or Hydrology , naturally problematic? (If needed, explain any answers in Remarks.)

SUMMARY OF FINDINGS – Attach site map showing sampling point locations, transects, important features, etc.

Hydrophytic Vegetation Present?	Yes <input type="checkbox"/>	No <input checked="" type="checkbox"/>	Is the Sampling Area within a Wetland? Yes <input type="checkbox"/> No <input checked="" type="checkbox"/>
Hydric Soil Present?	Yes <input type="checkbox"/>	No <input checked="" type="checkbox"/>	
Wetland Hydrology Present?	Yes <input type="checkbox"/>	No <input checked="" type="checkbox"/>	
Remarks: upland comparison point above hydric boundary			

VEGETATION – Use scientific names of plants

Tree Stratum (Plot Size: _____)	Absolute % Cover	Dominant Species?	Indicator Status	Dominance Test Worksheet:
1. _____	_____	_____	_____	Number of Dominant Species That Are OBL, FACW, or FAC: 1 (A) Total Number of Dominant Species Across All Strata: 2 (B) Percent of Dominant Species That Are OBL, FACW, or FAC: 50 (A/B)
2. _____	_____	_____	_____	
3. _____	_____	_____	_____	
4. _____	_____	_____	_____	
= Total Cover				Prevalence Index worksheet: Total % Cover of: Multiply by: OBL species _____ x1 = _____ FACW species _____ x2 = _____ FAC species 40 x3 = 120 FACU species 50 x4 = 200 UPL species _____ x5 = _____ Column Totals: 90 (A) 320 (B) Prevalence Index = B/A = 3.56
Sapling/Shrub Stratum (Plot Size: _____)				
1. _____	_____	_____	_____	
2. _____	_____	_____	_____	
3. _____	_____	_____	_____	
4. _____	_____	_____	_____	
5. _____	_____	_____	_____	
= Total Cover				
Herb Stratum (Plot Size: 5')				
1. <u>Setaria glauca</u>	<u>50</u>	<u>yes</u>	<u>FACU</u>	
2. <u>Kochia scoparia</u>	<u>40</u>	<u>yes</u>	<u>FAC</u>	
3. _____	_____	_____	_____	
4. _____	_____	_____	_____	
5. _____	_____	_____	_____	
6. _____	_____	_____	_____	
7. _____	_____	_____	_____	
8. _____	_____	_____	_____	
9. _____	_____	_____	_____	
10. _____	_____	_____	_____	
90			= Total Cover	
Woody Vine Stratum (Plot Size: _____)				
1. _____	_____	_____	_____	
2. _____	_____	_____	_____	
_____			= Total Cover	
% Bare Ground in Herb Stratum 10				
Hydrophytic Vegetation Present? Yes <input type="checkbox"/> No <input checked="" type="checkbox"/>				
Remarks:				

SOIL

Sampling Point: 8-u

Profile Description: (Describe to the depth needed to document the indicator or confirm the absence of indicators.)

Depth (inches)	Matrix		Redox Features				Texture	Remarks
	Color (moist)	%	Color (Moist)	%	Type ¹	Loc ²		
0-7	10YR 3/1	100	_____	_____	_____	_____	sil	_____
7-18+	2.5Y 4/3	100	_____	_____	_____	_____	sil	_____
_____	_____	_____	_____	_____	_____	_____	_____	_____
_____	_____	_____	_____	_____	_____	_____	_____	_____
_____	_____	_____	_____	_____	_____	_____	_____	_____
_____	_____	_____	_____	_____	_____	_____	_____	_____

¹Type: C= Concentration, D=Depletion, RM=Reduced Matrix, CS=Covered or Coated Sand Grains. ²Location: PL=Pore Lining, M=Matrix

Hydric Soil Indicators: (Applicable to all LRRs, unless otherwise noted.)

- Histosol (A1)
- Histic Epipedon (A2)
- Black Histic (A3)
- Hydrogen Sulfide (A4)
- Stratified Layers (A5) **(LRR F)**
- 1 cm Muck (A9) **(LRR F, G, H)**
- Depleted Below Dark Surface (A11)
- Thick Dark Surface (A12)
- Sandy Mucky Mineral (S1)
- 2.5 CM Mucky Peat or Peat (S2) **(LRR G, H)**
- 5 cm Mucky Peat or Peat (S3) **(LRR F)**
- Sandy Gleyed Matrix (S4)
- Sandy Redox (S5)
- Stripped Matrix (S6)
- Loamy Mucky Mineral (F1)
- Loamy Gleyed Matrix (F2)
- Depleted Matrix (F3)
- Redox Dark Surface (F6)
- Depleted Dark Surface (F7)
- Redox Depressions (F8)
- High Plains Depressions (F16) **(MLRA 72 & 73 of LRR H)**

Indicators for Problematic Hydric Soils³:

- 1 cm Muck (A9) **(LRR I, J)**
- Coast Prairie Redox (A16) **(LRR F, G, H)**
- Dark Surface (S7) **(LRR G)**
- High Plains Depressions (F16) **(LRR H outside of MLRA 72 & 73)**
- Reduced Vertic (F18)
- Red Parent Material (TF2)
- Very Shallow Dark Surface (TF 12)
- Other (Explain in Remarks)

³Indicators of hydrophytic vegetation and wetland hydrology must be present, unless disturbed or problematic.

Restrictive Layer (if present):

Type: _____
Depth (Inches): _____

Hydric Soils Present? Yes No

Remarks:

HYDROLOGY

Wetland Hydrology Indicators:

Primary Indicators (minimum of one required; check all that apply)

- Surface Water (A1)
- High Water Table (A2)
- Saturation (A3)
- Water Marks (B1)
- Sediment Deposits (B2)
- Drift Deposits (B3)
- Algal Mat or Crust (B4)
- Iron Deposits (B5)
- Inundation Visible on Aerial Imagery (B7)
- Water-Stained Leaves (B9)
- Salt Crust (B11)
- Aquatic Invertebrates (B13)
- Hydrogen Sulfide Odor (C1)
- Dry Season Water Table (C2)
- Oxidized Rhizospheres along Living Roots (C3) **(where not tilled)**
- Presence of Reduced Iron (C4)
- Thin Muck Surface (C7)
- Other (Explain in Remarks)

Secondary Indicators (2 or more required)

- Surface Soil Cracks (B6)
- Sparsely Vegetated Concave Surface (B8)
- Drainage Patterns (B10)
- Oxidized Rhizospheres along Living Roots (C3) **(where tilled)**
- Crayfish Burrows (C8)
- Saturation Visible on Aerial Imagery (C9)
- Geomorphic Position (D2)
- FAC-Neutral Test (D5)
- Frost-Heave Hummocks (D7) **(LRR F)**

Field Observations:

Surface Water Present? Yes No Depth (inches): _____
 Water Table Present? Yes No Depth (inches): _____
 Saturation Present? (includes capillary fringe) Yes No Depth (inches): _____

Wetland Hydrology Present? Yes No

Describe Recorded Data (stream gauge, monitoring well, aerial photos, previous inspections), if available:

Remarks:

APPENDIX C

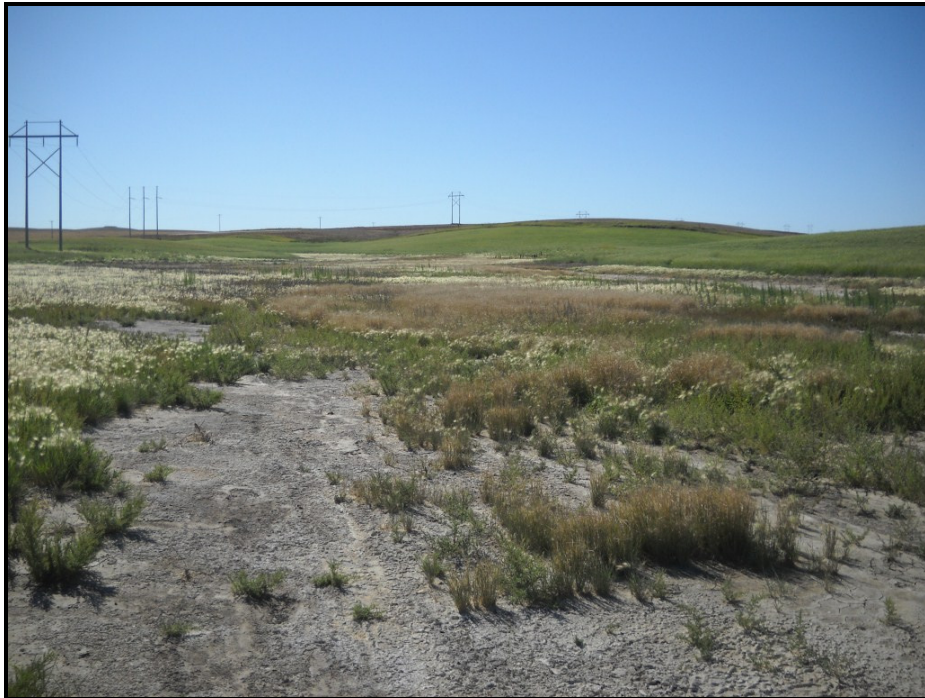
Project Area Photographs



Photograph 1. Photograph of Wetland 1 taken facing west. Wetland 1 is an isolated depression wetland in the Project Area. Wheat is planted in the Project Area. The native prairie area located west of the Project Area is visible in the background of the photograph.



Photograph 2. Photograph of Wetland 2 taken facing west from near Observation Point 2a-w. Wetland 2 is an intermittent stream with interspersed prairie cordgrass patches and open water pools along the channel.



Photograph 3. Photograph of Wetland 2 taken facing southeast. Photograph taken from near Observation Point 2b-w of a saline flat that is connected to the intermittent stream. Foxtail barley is prevalent across the area.



Photograph 4. Photograph of Wetland 2 taken facing north from near Observation Point 2d-w. Interspersed open water pools and prairie cordgrass and cattail patches are present in the intermittent drainage.



Photograph 5. Photograph of Wetlands 3 and 4 taken facing west. Wetland 3 is in the center of the photograph and Wetland 4 is located behind Wetland 3. Both wetlands are shallow depression wetlands with shallow drains that flow east into Wetland 2.



Photograph 6. Photograph of Wetland 6 taken facing northwest. The shallow depression wetland is dry at this time but appears to have ponded water earlier this summer. Barnyard grass is prevalent along the edge of the wetland.



Photograph 7. Photograph of Wetland 7 taken facing northwest. The shallow depression wetland is located just west of the North Plains Truck Unloading Facility. Sparse patches of barnyard grass is present in the wetland area.



Photograph. Photograph of Wetland 8 taken facing east. The shallow depression wetland is dry at this time but appears to have ponded water earlier this summer. Barnyard grass is prevalent in the wetland.

EXHIBIT D.2

**U.S. Army Corps of Engineers – Omaha District
Jurisdictional Determination**

Not available at time of filing

**EPND will supplement this filing upon receipt of this
correspondence**