



**LITTLE MUDDY STATION CONNECTION PROJECT
TABLE OF CONTENTS**

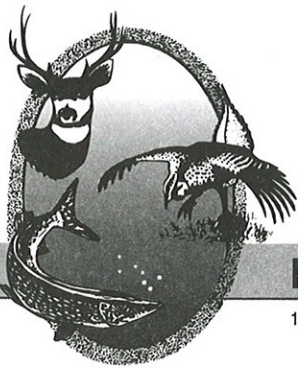
Exhibit F	Agency Consultations
Exhibit F.1	U.S. Department of Interior, Fish and Wildlife Service Correspondence
Exhibit F.2	North Dakota Game and Fish Department Correspondence dated October 24, 2011
Exhibit F.3	North Dakota Parks and Recreation Department Correspondence dated October 7, 2011
Exhibit F.4	US Department of Agriculture, Farm Service Agency Correspondence dated: <ul style="list-style-type: none">• September 23, 2011 (Wetland Reserve Program)• September 23, 2011 (Grassland Reserve Program)• September 27, 2011 (Conservation Reserve Program)
Exhibit F.5	North Dakota State Water Commission Correspondence dated September 26, 2011
Exhibit F.6	US Department of Interior, Bureau of Reclamation Correspondence dated September 29, 2011
Exhibit F.7	US Department of Interior, Bureau of Land Management Correspondence dated September 26, 2011
Exhibit F.8	North Dakota State Lands Department Correspondence dated October 3, 2011

EXHIBIT F.1

**U.S. Department of Interior, Fish and Wildlife Service
Correspondence**

Not available at time of filing

EPND will supplement this filing upon receipt of this correspondence.



"VARIETY IN HUNTING AND FISHING"

NORTH DAKOTA GAME AND FISH DEPARTMENT

100 NORTH BISMARCK EXPRESSWAY BISMARCK, NORTH DAKOTA 58501-5095 PHONE 701-328-6300 FAX 701-328-6352

October 24, 2011

Paul Hartzheim
Senior Analyst
Merjent, Inc.
615 First Avenue NE, Suite 425
Minneapolis, MN 55413

Dear Mr. Hartzheim:

RE: Enbridge Pipelines (North Dakota) LLC – Little Muddy Station Connection Project

Enbridge Pipelines (North Dakota) LLC is proposing to construct approximately 5.6 miles of 10-inch diameter pipeline from a new station to its existing East Fork Station in Williams County, North Dakota.

The National Wetland Inventory indicates several wetlands within the proposed project corridor. Steps should be taken to protect any wetlands that cannot be avoided, no alterations should be made to existing drainage patterns, and above-ground appurtenances should not be placed in wetland areas.

We do not believe these projects will have any significant adverse effects on wildlife or wildlife habitat, including conservation priority species, provided impacts to wetland areas are avoided or replaced in kind and disturbed areas are reclaimed to pre-project conditions.

Sincerely,

A handwritten signature in blue ink that reads "Greg Link". The signature is stylized and cursive.

Greg Link
Chief
Conservation & Communication Division

js



Jack Dalrymple, Governor
Mark A. Zimmerman, Director
1600 East Century Avenue, Suite 3
Bismarck, ND 58503-0649
Phone 701-328-5357
Fax 701-328-5363
E-mail parkrec@nd.gov
www.parkrec.nd.gov

October 7, 2011

Sara Ploetz
Enbridge Pipelines (North Dakota) LLC
1409 Hammond Ave.
Superior, WI 54880

Re: Enbridge Pipelines (North Dakota) LLC: Little Muddy Connection Project Expansion Project , Williams County, ND

Ms. Ploetz,

The North Dakota Parks and Recreation Department (the Department) has reviewed the above referenced proposal from Enbridge Pipelines to construct pipeline from the new Little Muddy Station to East Fork Station in Williams County, North Dakota.

Our agency scope of authority and expertise covers recreation and biological resources (in particular rare plants and ecological communities). The project as defined does not affect state park lands that we manage or Land and Water Conservation Fund recreation projects that we coordinate.

The North Dakota Natural Heritage biological conservation database has been reviewed to determine if any plant or animal species of concern or other significant ecological communities are known to occur within an approximate one-mile radius of the project area. Based on this review, there are no documented occurrences in our database within or adjacent to project area. Because this information is not based on a comprehensive inventory, there may be species of concern or otherwise significant ecological communities in the area that are not represented in the database. The lack of data for any project area cannot be construed to mean that no significant features are present. The absence of data may indicate that the project area has not been surveyed, rather than confirm that the area lacks natural heritage resources.

The Department recommends that the project be accomplished with minimal impacts and that all efforts be made to ensure that critical habitats not be disturbed in the project area to help secure rare species conservation in North Dakota. Regarding any reclamation efforts, we recommend that any impacted areas be revegetated with species native to the project area.

We appreciate your commitment to rare plant, animal and ecological community conservation, management and inter-agency cooperation to date. For additional information please contact me at (701-328-5370 or kgduttenehfer@nd.gov). Thank you for the opportunity to comment on this proposed project.

Sincerely,

Kathy Duttenehfer

Kathy Duttenehfer, Coordinator
Natural Resources Division

R.USNDNHI*2011_218KD10/7/2011DL10.7.2011

• • • • •
Play in our backyard!

Paul M. Hartzheim

From: Jost, Jim - FSA, Fargo, ND <jim.jost@nd.usda.gov>
Sent: Tuesday, September 27, 2011 10:12 AM
To: Paul M. Hartzheim
Cc: sara.ploetz@enbridge.com
Subject: RE: Enbridge: Little Muddy Station Connection Project: Request for CRP review

Based on the data available at the North Dakota State FSA Office, there are about 9 acres of CRP that are touched by the 1 mile buffer, but no CRP is affected by the route or the station.

Jim Jost

FSA Farm Program Specialist
North Dakota State FSA Office
701-893-2214

From: Schwagler, Todd - NRCS, Bismarck, ND
Sent: Friday, September 23, 2011 2:17 PM
To: Jost, Jim - FSA, Fargo, ND
Cc: Hochhalter, James - FSA, Fargo, ND
Subject: FW: Enbridge: Little Muddy Station Connection Project: Request for CRP review

Jim,

Here's one for you.

From: Paul M. Hartzheim [<mailto:PHartzheim@Merjent.com>]
Sent: Friday, September 23, 2011 1:34 PM
To: Schwagler, Todd - NRCS, Bismarck, ND
Cc: Paryzek, Corey - FSA, Williston, ND; Sara Ploetz; Angela M. Ronayne
Subject: Enbridge: Little Muddy Station Connection Project: Request for CRP review

Dear Mr. Schwagler,

Enbridge Pipelines (North Dakota) LLC (EPND) is presently evaluating an expansion of its North Dakota pipeline system in response to increased demand for crude oil transportation services. As part of its Little Muddy Station Connection Project (Project), EPND is proposing to construct approximately 5.6 miles of 10-inch-diameter pipeline from a new station (Little Muddy Station) to its existing East Fork Station in Williams County, North Dakota. The new Little Muddy Station will consist of two new 20,000 barrel (bbl) tanks, a shipper-owned and operated Lease Automatic Custody Transfer (LACT) area to accommodate 8 truck unloading units, and miscellaneous piping, manifolds, and pumps. Construction activities are proposed to begin in Spring 2011, with a projected completion date of December 2012. The project comes under the jurisdiction of the North Dakota Public Service Commission (PSC); EPND plans to submit an application to the PSC in four to six weeks.

On behalf of EPND, Merjent, Inc. (Merjent) respectfully submits this consultation request to the USDA-Farm Service Authority (FSA) to review a one-mile-wide "evaluation corridor" centered along the route of the pipeline for concerns related to lands enrolled in the Conservation Reserve Program (CRP). As shown on the attached materials, EPND is currently evaluating two segment alternatives in the southeastern portion of the pipeline route. It is EPND's understanding that lands enrolled in the CRP program are not publicly available, and require consultation with the FSA to determine the location of CRP parcels. Project location maps and a shapefile that depict the pipeline route(s) and a one-mile-wide evaluation corridor are attached to this email.

The township, range, and section information for the pipeline, facilities, and a one-mile-wide evaluation corridor is provided in the following table.

Township	Range	Section(s)
155N	99W	6
155N	100W	1,2
156N	99W	31
156N	100W	8,9,15,16,17,20,21,22,23,25,26,27,28,34,35,36

We appreciate your review of this project, and your prompt response to this email is greatly appreciated. If you have questions regarding this project or require additional information, please contact me, EPND’s environmental consultant, at (612) 746-1618 or phartzheim@merjent.com or Sara Ploetz of EPND at (715) 398-4730 or sara.ploetz@enbridge.com.

Sincerely,

Paul Hartzheim
Senior Analyst



Paul Hartzheim

615 First Avenue NE 612.746.3660 main
 Suite 425 612.746.1618 direct
 Minneapolis, MN 55413 612.845.1641 cell
 612.746.3679 fax
www.merjent.com phartzheim@merjent.com

Paul M. Hartzheim

From: Heglund, Jennifer - NRCS, Bismarck, ND <Jennifer.Heglund@nd.usda.gov>
Sent: Friday, September 23, 2011 2:24 PM
To: Paul M. Hartzheim
Cc: Howard, Jill - NRCS, Bismarck, ND
Subject: RE: Enbridge: Little Muddy Station Connection Project: Request for GRP review

Mr. Hartzheim,

There are no occurrences of Grassland Reserve Program land in Williams County.
Thank you for your consultation.

Jennifer C. Heglund
NRCS Assistant State Conservationist (Programs)
PO Box 1458
220 E Rosser
Bismarck, ND 58501

Phone: 701-530-2095
Cell: 701-220-7667
Fax: 701-530-2110

"Helping People Help the Land"

From: Paul M. Hartzheim [<mailto:PHartzheim@Merjent.com>]
Sent: Friday, September 23, 2011 1:42 PM
To: Heglund, Jennifer - NRCS, Bismarck, ND
Cc: Paryzek, Corey - FSA, Williston, ND; Sara Ploetz; Angela M. Ronayne
Subject: Enbridge: Little Muddy Station Connection Project: Request for GRP review

Dear Ms. Heglund,

Enbridge Pipelines (North Dakota) LLC (EPND) is presently evaluating an expansion of its North Dakota pipeline system in response to increased demand for crude oil transportation services. As part of its Little Muddy Station Connection Project (Project), EPND is proposing to construct approximately 5.6 miles of 10-inch-diameter pipeline from a new station (Little Muddy Station) to its existing East Fork Station in Williams County, North Dakota. The new Little Muddy Station will consist of two new 20,000 barrel (bbl) tanks, a shipper-owned and operated Lease Automatic Custody Transfer (LACT) area to accommodate 8 truck unloading units, and miscellaneous piping, manifolds, and pumps. Construction activities are proposed to begin in Spring 2011, with a projected completion date of December 2012. The project comes under the jurisdiction of the North Dakota Public Service Commission (PSC); EPND plans to submit an application to the PSC in four to six weeks.

On behalf of EPND, Merjent, Inc. (Merjent) respectfully submits this consultation request to the USDA-Farm Service Authority (FSA) to review a one-mile-wide "evaluation corridor" centered along the route of the pipeline for concerns related to lands enrolled in the Grassland Reserve Program (GRP). As shown on the attached materials, EPND is currently evaluating two segment alternatives in the southeastern portion of the pipeline route. It is EPND's understanding that lands enrolled in the GRP program are not publicly available, and require consultation with the FSA to determine the location of GRP parcels. Project location maps and a shapefile that depict the pipeline route(s) and a one-mile-wide evaluation corridor are attached to this email.

The township, range, and section information for the pipeline, facilities, and a one-mile-wide evaluation corridor is provided in the following table.

Township	Range	Section(s)
155N	99W	6
155N	100W	1,2
156N	99W	31
156N	100W	8,9,15,16,17,20,21,22,23,25,26,27,28,34,35,36

We appreciate your review of this project, and your prompt response to this email is greatly appreciated. If you have questions regarding this project or require additional information, please contact me, EPND's environmental consultant, at (612) 746-1618 or phartzheim@merjent.com or Sara Ploetz of EPND at (715) 398-4730 or sara.ploetz@enbridge.com.

Sincerely,

Paul Hartzheim
Senior Analyst



Paul Hartzheim

615 First Avenue NE 612.746.3660 main
Suite 425 612.746.1618 direct
Minneapolis, MN 55413 612.845.1641 cell
612.746.3679 fax
www.merjent.com phartzheim@merjent.com

Paul M. Hartzheim

From: Paryzek, Corey - FSA, Williston, ND <Corey.Paryzek@nd.usda.gov>
Sent: Friday, September 23, 2011 2:09 PM
To: Paul M. Hartzheim
Subject: RE: Enbridge: Little Muddy Station Connection Project: Request for WRP review

[Williams County currently does not have any WRP contracts.](#)

From: Paul M. Hartzheim [<mailto:PHartzheim@Merjent.com>]
Sent: Friday, September 23, 2011 1:45 PM
To: Hagel, Todd - NRCS, Bismarck, ND
Cc: Paryzek, Corey - FSA, Williston, ND; Sara Ploetz; Angela M. Ronayne
Subject: Enbridge: Little Muddy Station Connection Project: Request for WRP review

Dear Mr. Hagel,

Enbridge Pipelines (North Dakota) LLC (EPND) is presently evaluating an expansion of its North Dakota pipeline system in response to increased demand for crude oil transportation services. As part of its Little Muddy Station Connection Project (Project), EPND is proposing to construct approximately 5.6 miles of 10-inch-diameter pipeline from a new station (Little Muddy Station) to its existing East Fork Station in Williams County, North Dakota. The new Little Muddy Station will consist of two new 20,000 barrel (bbl) tanks, a shipper-owned and operated Lease Automatic Custody Transfer (LACT) area to accommodate 8 truck unloading units, and miscellaneous piping, manifolds, and pumps. Construction activities are proposed to begin in Spring 2011, with a projected completion date of December 2012. The project comes under the jurisdiction of the North Dakota Public Service Commission (PSC); EPND plans to submit an application to the PSC in four to six weeks.

On behalf of EPND, Merjent, Inc. (Merjent) respectfully submits this consultation request to the USDA-Farm Service Authority (FSA) to review a one-mile-wide "evaluation corridor" centered along the route of the pipeline for concerns related to lands enrolled in the Wetland Reserve Program (WRP). As shown on the attached materials, EPND is currently evaluating two segment alternatives in the southeastern portion of the pipeline route. It is EPND's understanding that lands enrolled in the WRP program are not publicly available, and require consultation with the FSA to determine the location of WRP parcels. Project location maps and a shapefile that depict the pipeline route(s) and a one-mile-wide evaluation corridor are attached to this email.

The township, range, and section information for the pipeline, facilities, and a one-mile-wide evaluation corridor is provided in the following table.

Township	Range	Section(s)
155N	99W	6
155N	100W	1,2
156N	99W	31
156N	100W	8,9,15,16,17,20,21,22,23,25,26,27,28,34,35,36

We appreciate your review of this project, and your prompt response to this email is greatly appreciated. If you have questions regarding this project or require additional information, please contact me, EPND's environmental consultant, at (612) 746-1618 or phartzheim@merjent.com or Sara Ploetz of EPND at (715) 398-4730 or sara.ploetz@enbridge.com.

Sincerely,
 Merjent, Inc.

Paul Hartzheim
Senior Analyst



Paul Hartzheim

615 First Avenue NE 612.746.3660 main
Suite 425 612.746.1618 direct
Minneapolis, MN 55413 612.845.1641 cell
612.746.3679 fax

www.merjent.com

phartzheim@merjent.com

Paul M. Hartzheim

From: Heiser, Gerald R. <gheiser@nd.gov>
Sent: Monday, September 26, 2011 8:24 AM
To: Paul M. Hartzheim
Cc: Paczkowski, John A.; Behm, Melissa M.
Subject: Re: Enbridge: Little Muddy Station Connection Project: Request for Sovereign Lands review

On Sep 23, 2011, at 1:53 PM, Behm, Melissa M. wrote:

Good morning Mr. Hartzheim.

You are correct in your assumption that your project does not affect any sovereign lands of the state of North Dakota. Therefore, you need not apply for a sovereign lands permit. Thank you for your inquiry.

Jerry

Gerald R. Heiser
Sovereign Lands Manager
Office of the State Engineer
900 East Boulevard Ave.
Bismarck, ND 58505-0850

phone: (701) 328-4935
email: gheiser@nd.gov

From: "Paul M. Hartzheim" <PHartzheim@Merjent.com>
Date: Fri, 23 Sep 2011 13:48:30 -0500
To: Melissa Behm <mmbehm@nd.gov>
Cc: Sara Ploetz <Sara.Ploetz@enbridge.com>, "Angela M. Ronayne" <ARonayne@Merjent.com>
Subject: Enbridge: Little Muddy Station Connection Project: Request for Sovereign Lands review

Dear Ms. Behm,

Enbridge Pipelines (North Dakota) LLC (EPND) is presently evaluating an expansion of its North Dakota pipeline system in response to increased demand for crude oil transportation services. As part of its Little Muddy Station Connection Project (Project), EPND is proposing to construct approximately 5.6 miles of 10-inch-diameter pipeline from a new station (Little Muddy Station) to its existing East Fork Station in Williams County, North Dakota. The new Little Muddy Station will consist of two new 20,000 barrel (bbl) tanks, a shipper-owned and operated Lease Automatic Custody Transfer (LACT) area to accommodate 8 truck unloading units, and miscellaneous piping, manifolds, and pumps. Construction activities are proposed to begin in Spring 2011, with a projected completion date of December 2012. The project comes under the jurisdiction of the North Dakota Public Service Commission (PSC); EPND plans to submit an application to the PSC in four to six weeks.

Based on a desktop review of publicly available data, there are no navigable waterbodies (i.e., sovereign lands) with the project vicinity. On behalf of EPND, Merjent, Inc. (Merjent) respectfully submits this consultation request to review a one-mile-wide "evaluation corridor" centered along the route of the pipeline for concerns related to sovereign lands. As shown on the attached materials, EPND is currently evaluating two segment alternatives in the southeastern portion of

the pipeline route. Project location maps and a shapefile that depict the pipeline route(s) and a one-mile-wide evaluation corridor are attached to this email.

The township, range, and section information for the pipeline and one-mile-wide corridor is provided in the following table.

Township	Range	Section(s)
155N	99W	6
155N	100W	1,2
156N	99W	31
156N	100W	8,9,15,16,17,20,21,22,23,25,26,27,28,34,35,36

We appreciate your review of this project, and your prompt response to this email is greatly appreciated. If you have questions regarding this project or require additional information, please contact me, EPND's environmental consultant, at (612) 746-1618 or phartzheim@merjent.com or Sara Ploetz of EPND at (715) 398-4730 or sara.ploetz@enbridge.com.

Sincerely,

Paul Hartzheim
Senior Analyst

<image001.gif>

Paul Hartzheim

615 First Avenue NE 612.746.3660 main
Suite 425 612.746.1618 direct
Minneapolis, MN 612.845.1641 cell
55413 612.746.3679 fax
www.merjent.com phartzheim@merjent.com

<LM_Overview.pdf><LM_Topo.pdf><LM_Aerial.pdf><ATT00001..txt>



United States Department of the Interior

BUREAU OF RECLAMATION

Dakotas Area Office

P.O. Box 1017

Bismarck, North Dakota 58502

SEP 29 2011



IN REPLY REFER TO:
DK-5000
ENV-6.00

Mr. Paul Hartzheim
Senior Analyst
Merjent Consulting
615 First Avenue NE Suite 425
Minneapolis, MN 55413

Subject: Little Muddy Substation

Mr. Hartzheim:

This letter is in response to your e-mail consultation package of September 23, 2011, regarding Little Muddy Station Connection in northwest North Dakota just east of Williston. I have reviewed the information from your consultation letter and overview map. Bureau of Reclamation's nearest facility is situated south and west of Williston as depicted in the enclosed, partial view map.

Your project is located between Range 100W, T156N and Range 99W, T155N on the south end. Apart from Trenton Water Users Area, no other Reclamation features are located near the proposed project area. Further, Trenton Water Users Area is west of Williston and south starting at S31, T154N, R101W, Williston SW, ND - fifth P.M.; and S6, T153N, R101W, Williston SW, ND - fifth P.M., on the west side of highway 85 then proceeds south and west. This is clearly outside of your proposed action area. I have provided a small map of the east extent of the Trenton Indian Service Area for clarity.

Based on this review Reclamation concurs with your determination that no Reclamation facilities would be impacted by your action as proposed. Should the nature of your action be substantively changed or relocated, please notify this office.

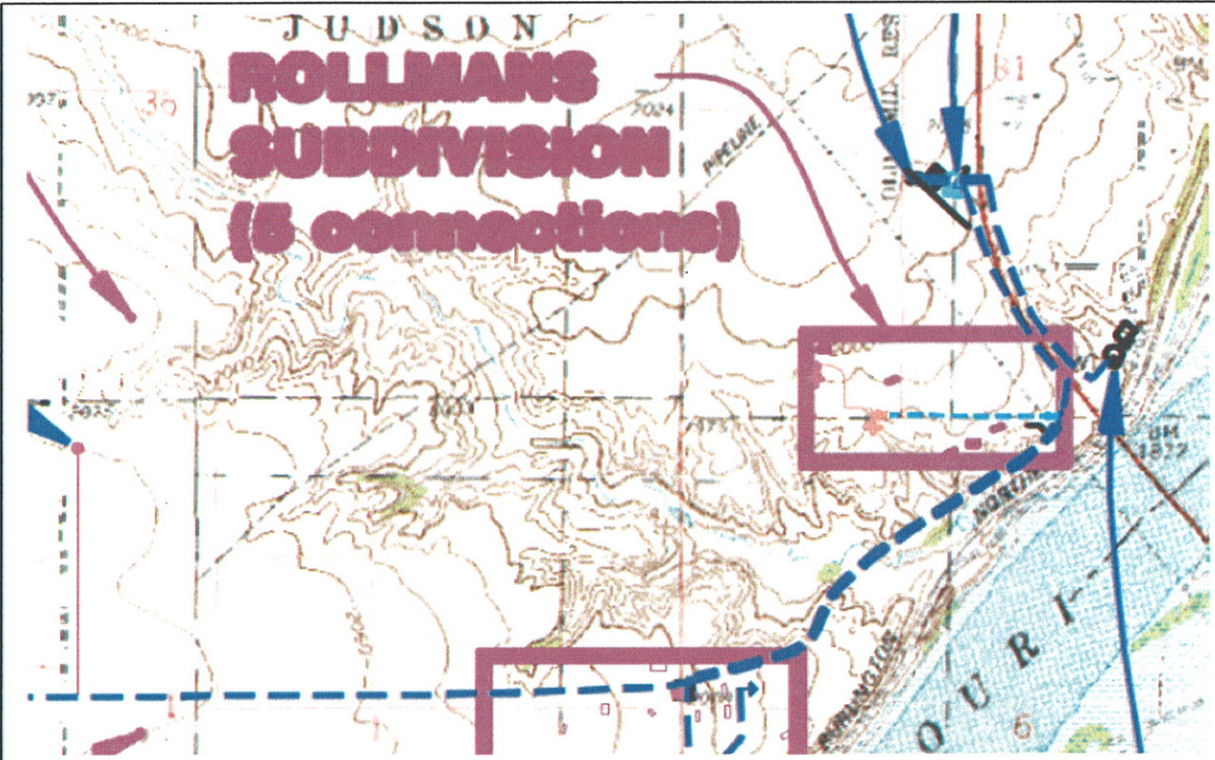
Reclamation receives a large number of energy industry related consultations and makes every effort to respond in a timely manner. However, consultations are conducted in the order they are received, so please allow for adequate response time.

Should you have additional questions do not hesitate to contact me at 701-221-1287.

Sincerely,

Kelly McPhillips
Environmental Specialist

Enclosure



Reclamation's nearest federal facilities: S31, T154N, R101W, Williston SW, ND fifth P.M., and S6, T153N, R101W, Williston SW, ND fifth P.M.

Paul M. Hartzheim

From: Gisvold, Linda R <lgisvold@blm.gov>
Sent: Monday, September 26, 2011 3:16 PM
To: Paul M. Hartzheim
Subject: Enbridge: Little Muddy Station Connection Project

Hi Paul,

I am replying to your e-mail received Friday, September 23, regarding the subject line.

Upon reviewing the attachments sent with the e-mail, the Bureau of Land Management does not have any surface management areas impacted by the project. We want to thank you for the opportunity to review and comment, if necessary, regarding issues or needs associated with the project. If you have any questions, please contact me at 701-227-7711 or e-mail: lgisvold@blm.gov.

Linda Gisvold, Realty Specialist
BLM – NDFO
99 23rd Avenue West, Suite A
Dickinson, ND 58601
Phone: 701-227-7711

Paul M. Hartzheim

From: Paul M. Hartzheim
Sent: Friday, September 23, 2011 1:01 PM
To: 'lgisvold@blm.gov'
Cc: Sara Ploetz; Angela M. Ronayne
Subject: Enbridge: Little Muddy Station Connection Project: Request for BLM review
Attachments: LM_Overview.pdf; LM_Topo.pdf; LM_Aerial.pdf; Little_Muddy_Shapefiles.zip

Tracking:	Recipient	Delivery	Read
	'lgisvold@blm.gov'		
	Sara Ploetz		
	Angela M. Ronayne	Delivered: 9/23/2011 1:01 PM	Read: 9/23/2011 1:05 PM

Dear Ms. Gisvold,

Enbridge Pipelines (North Dakota) LLC (EPND) is presently evaluating an expansion of its North Dakota pipeline system in response to increased demand for crude oil transportation services. As part of its Little Muddy Station Connection Project (Project), EPND is proposing to construct approximately 5.6 miles of 10-inch-diameter pipeline from a new station (Little Muddy Station) to its existing East Fork Station in Williams County, North Dakota. The new Little Muddy Station will consist of two new 20,000 barrel (bbl) tanks, a shipper-owned and operated Lease Automatic Custody Transfer (LACT) area to accommodate 8 truck unloading units, and miscellaneous piping, manifolds, and pumps. Construction activities are proposed to begin in Spring 2011, with a projected completion date of December 2012. The project comes under the jurisdiction of the North Dakota Public Service Commission (PSC); EPND plans to submit an application to the PSC in four to six weeks.

Based on a desktop review of publicly available data, there are no anticipated impacts to Bureau of Land Management (BLM)-administrated lands resulting from the project. On behalf of EPND, Merjent, Inc. (Merjent) respectfully submits this consultation request to review a one-mile-wide "evaluation corridor" centered along the route of the pipeline for concerns related to BLM-administered lands. As shown on the attached materials, EPND is currently evaluating two segment alternatives in the southeastern portion of the pipeline route. Project location maps and a shapefile that depict the pipeline route(s) and a one-mile-wide evaluation corridor are attached to this email.

The township, range, and section information for the pipeline and one-mile-wide corridor is provided in the following table.

Township	Range	Section(s)
155N	99W	6
155N	100W	1,2
156N	99W	31
156N	100W	8,9,15,16,17,20,21,22,23,25,26,27,28,34,35,36

We appreciate your review of this project, and your prompt response to this email is greatly appreciated. If you have questions regarding this project or require additional information, please contact me, EPND's environmental consultant, at (612) 746-1618 or phartzheim@merjent.com or Sara Ploetz of EPND at (715) 398-4730 or sara.ploetz@enbridge.com.

Sincerely,

Paul Hartzheim
Senior Analyst



Paul Hartzheim

615 First Avenue NE

Suite 425

Minneapolis, MN 55413

612.746.3660 main

612.746.1618 direct

612.845.1641 cell

612.746.3679 fax

www.merjent.com

phartzheim@merjent.com

Paul M. Hartzheim

From: Haupt, Michael L. <mhaupt@nd.gov>
Sent: Monday, October 03, 2011 9:47 AM
To: Paul M. Hartzheim
Cc: 'sara.ploetz@enbridge.com'
Subject: EPND: Little Muddy Station Connection Project: Request for State Land review
Attachments: 156-100-16WIL.pdf

Paul,

Good morning! As you can see on the attached aerial photo section 16, T156N, R100W is a very busy tract of trust land. There are extensive potential gravel deposits on this tract and currently the N2NE4 is being advertised and leased at public auction for gravel mining. Until a potential gravel deposit is actually prospected its quality and quantity is uncertain. The N2NE4 was prospected and found to have mineable gravel deposits. Although we can't say for certain that the rest of the section contains mineable deposits, it's a possibility. Therefore, if EPND were to consider a route across this tract they would be required to do some prospecting and if mineable gravel deposits were found there would be some options to discuss/consider at that time. This is true for not only the current pipeline project review, but also future pipeline requests that may come from other directions into the proposed EPND station in section 17. We have allowed some right of ways across this tract but these companies know, and their easement requires, that when and if gravel mining proceeds and comes up against their easement that the easement can be terminated, the right of way moved to another location within the tract at their expense, or they will be required to pay the trust for unmined gravel within and severed by their right of way or for deposits not mined because of the existence of the right of way.

Another item to consider is the 1280 acre oil and gas spacing unit that includes sections 16 and 21. Oil well sites for this unit would be placed on the north or south end of the unit and so we intend to protect the north end of section 16 as a potential oil well site.

Let me know if you have questions. Thanks.

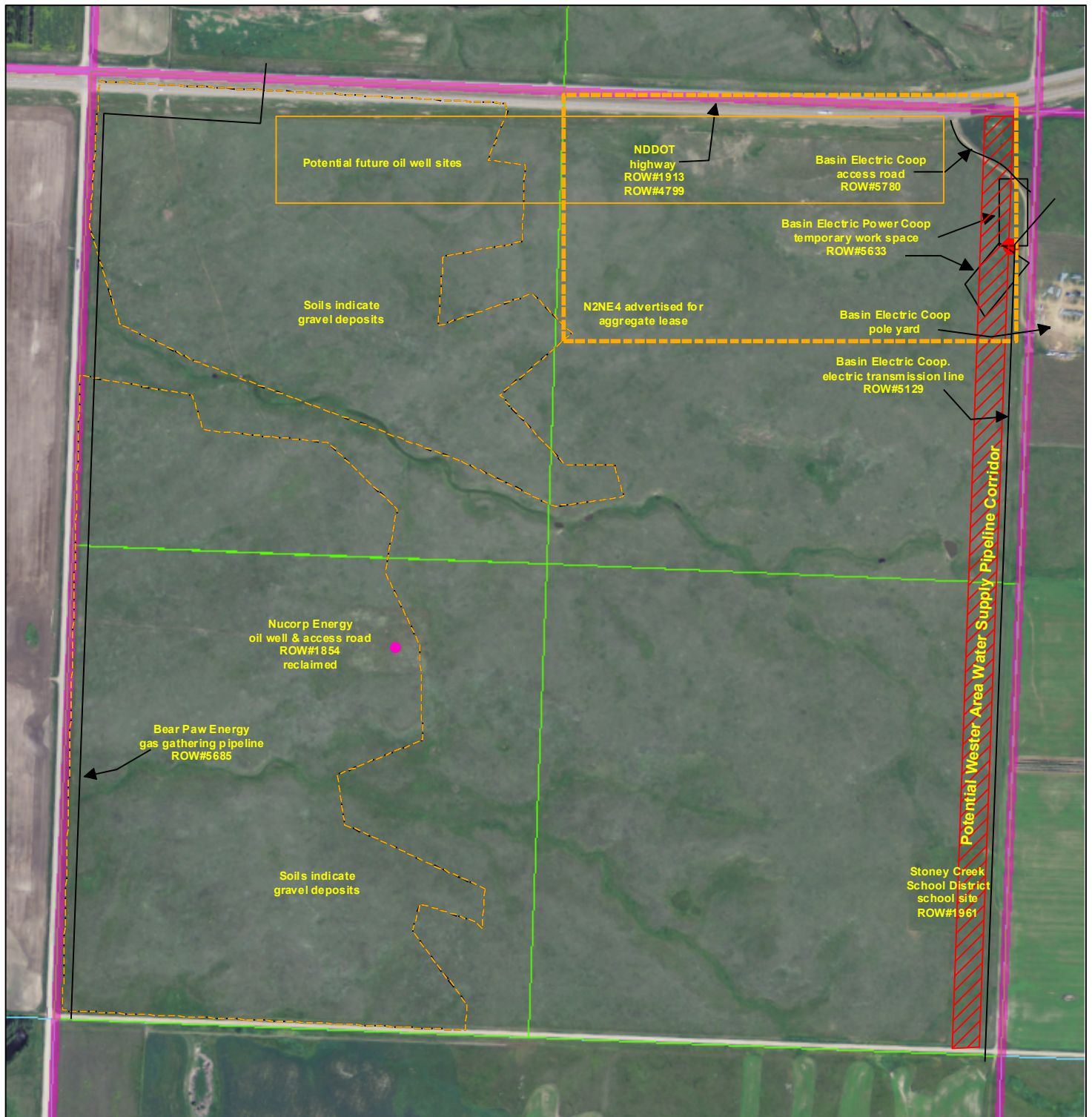
Michael L. Haupt
Land Management Professional, CPRM
North Dakota Department of Trust lands
PO Box 5523, Bismarck ND 58506-5523
701-328-1916
mhaupt@nd.gov

Note: You can track the real time status of your right-of-way application 24/7 at <http://www.land.nd.gov/surface/row/> using either the ROW number or by entering at least the first three letters of the company name. By checking this site you can find the name, telephone number and email address of the person working on the application as well as its current status in real time.

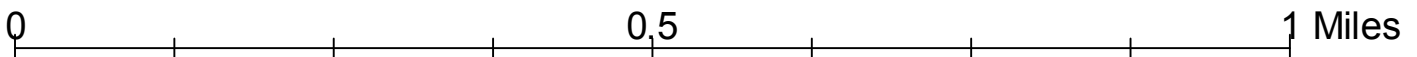
16-T156-R100

Williams County

Township: East Fork



Map Datum is WGS 84 (same as NAD 83)



Paul M. Hartzheim

From: Haupt, Michael L. <mhaupt@nd.gov>
Sent: Monday, October 03, 2011 11:43 AM
To: Paul M. Hartzheim
Cc: 'sara.ploetz@enbridge.com'; Angela M. Ronayne
Subject: RE: EPND: Little Muddy Station Connection Project: Request for State Land review

Paul,

There are no other ND School Trust surface tracts within the proposed 1 mile wide corridor. Thanks.

Michael L. Haupt

Land Management Professional, CPRM
North Dakota Department of Trust lands
PO Box 5523, Bismarck ND 58506-5523
701-328-1916
mhaupt@nd.gov

Note: You can track the real time status of your right-of-way application 24/7 at <http://www.land.nd.gov/surface/row/> using either the ROW number or by entering at least the first three letters of the company name. By checking this site you can find the name, telephone number and email address of the person working on the application as well as its current status in real time.

From: Paul M. Hartzheim [<mailto:PHartzheim@Merjent.com>]
Sent: Monday, October 03, 2011 11:10 AM
To: Haupt, Michael L.
Cc: 'sara.ploetz@enbridge.com'; Angela M. Ronayne
Subject: RE: EPND: Little Muddy Station Connection Project: Request for State Land review

Thank you for the prompt response Michael –

At this time, we do not anticipate the project will require a crossing of this parcel (Section 16, T156N, R100W); however, this is certainly good information to know for potential future projects. Can you confirm there are no other school trust lands located with the one-mile-wide corridor provided previously (see attached)?

Thanks again for your assistance and review of this project.

Sincerely,
Paul Hartzheim

merjent

Paul Hartzheim

615 First Avenue NE	612.746.3660 main
Suite 425	612.746.1618 direct
	612.845.1641 cell
Minneapolis, MN 55413	612.746.3679 fax
www.merjent.com	phartzheim@merjent.com

From: Haupt, Michael L. [<mailto:mhaupt@nd.gov>]
Sent: Monday, October 03, 2011 9:47 AM

To: Paul M. Hartzheim

Cc: 'sara.ploetz@enbridge.com'

Subject: EPND: Little Muddy Station Connection Project: Request for State Land review

Paul,

Good morning! As you can see on the attached aerial photo section 16, T156N, R100W is a very busy tract of trust land. There are extensive potential gravel deposits on this tract and currently the N2NE4 is being advertised and leased at public auction for gravel mining. Until a potential gravel deposit is actually prospected its quality and quantity is uncertain. The N2NE4 was prospected and found to have mineable gravel deposits. Although we can't say for certain that the rest of the section contains mineable deposits, it's a possibility. Therefore, if EPND were to consider a route across this tract they would be required to do some prospecting and if mineable gravel deposits were found there would be some options to discuss/consider at that time. This is true for not only the current pipeline project review, but also future pipeline requests that may come from other directions into the proposed EPND station in section 17. We have allowed some right of ways across this tract but these companies know, and their easement requires, that when and if gravel mining proceeds and comes up against their easement that the easement can be terminated, the right of way moved to another location within the tract at their expense, or they will be required to pay the trust for unmined gravel within and severed by their right of way or for deposits not mined because of the existence of the right of way.

Another item to consider is the 1280 acre oil and gas spacing unit that includes sections 16 and 21. Oil well sites for this unit would be placed on the north or south end of the unit and so we intend to protect the north end of section 16 as a potential oil well site.

Let me know if you have questions. Thanks.

Michael L. Haupt

Land Management Professional, CPRM
North Dakota Department of Trust lands
PO Box 5523, Bismarck ND 58506-5523
701-328-1916
mhaupt@nd.gov

Note: You can track the real time status of your right-of-way application 24/7 at <http://www.land.nd.gov/surface/row/> using either the ROW number or by entering at least the first three letters of the company name. By checking this site you can find the name, telephone number and email address of the person working on the application as well as its current status in real time.