

- Proposed Little Muddy Pipeline
- Existing Enbridge Pipelines
- Route Maps

DRAWN	CHECKED	APPROVED	DATE	REV. NO.	DESCRIPTION
MW	MJ	MJ	10/18/11	B	REISSUED FOR ND-PSC FILING
MW	MJ	MJ	9/20/11	A	ND-PSC FILING

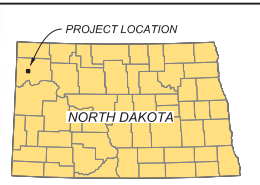
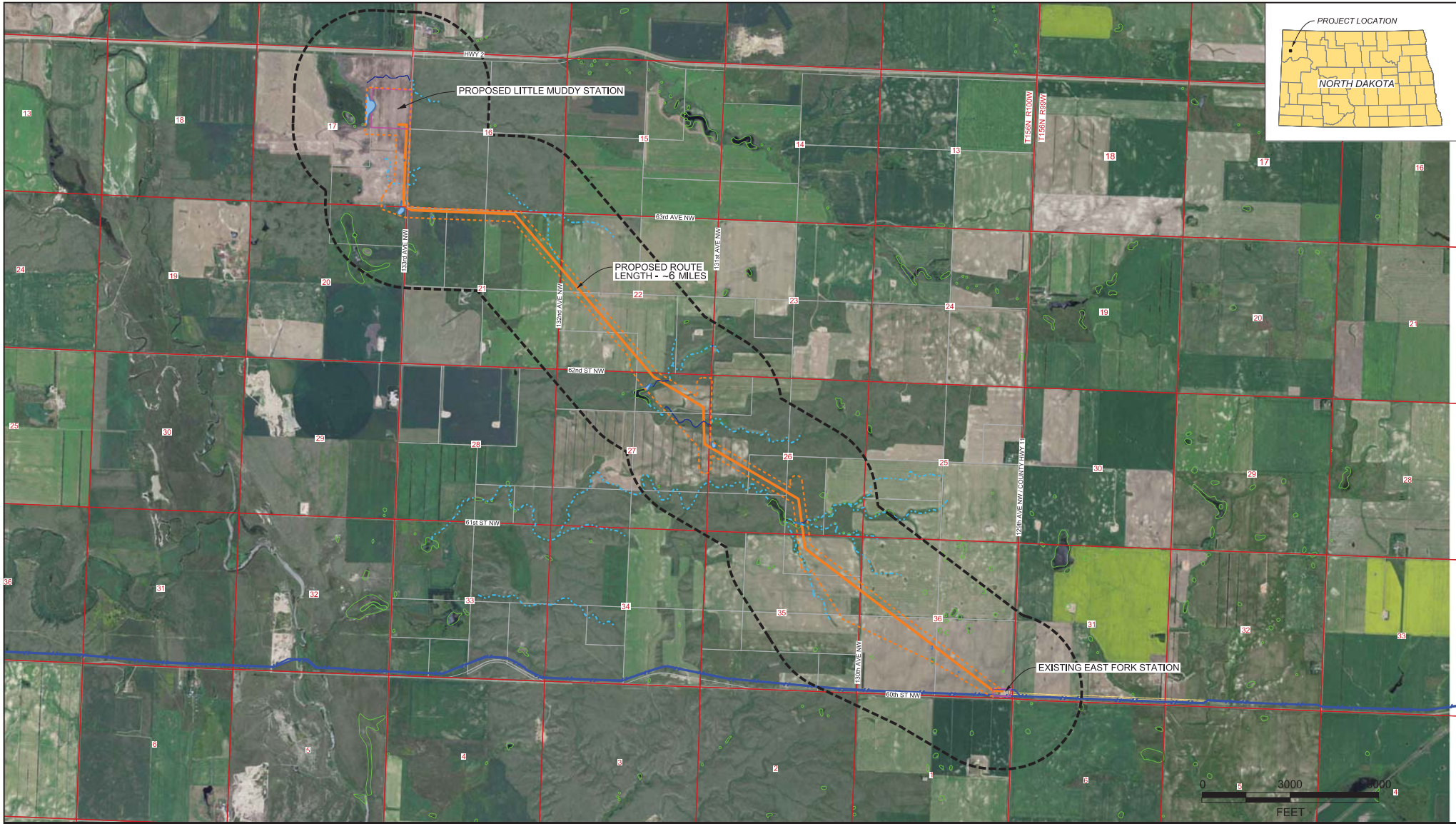
PREPARED BY:  
 ROOMKEY ENGINEERING, INC.  
 1000 W. 13TH AVE., SUITE 200  
 FARGO, NORTH DAKOTA 58103  
 701-782-2911

ENBRIDGE PIPELINES (NORTH DAKOTA) LLC

LITTLE MUDDY STATION  
 CONNECTION PROJECT  
**WILLIAMS COUNTY OVERVIEW**  
 SEC 17, 20, 21, 22, 26, 27, 35, 36 T156N, R100W

DRAWN: MWV	CHECKED: MJ
DATE: 9/20/11	SCALE: AS SHOWN

2728-M-0000



LEGEND

- PROPOSED ROUTE
- EXISTING ENBRIDGE PIPELINE
- STUDY AREA
- ENVIRONMENTAL CORRIDOR
- SECTION LINES
- PARCELS
- STATION BOUNDS
- NW WETLAND
- DELIMITED WETLAND
- DELIMITED WATER BODY
- USGS STREAM

GENERAL NOTES

REVISIONS

REV. NO.	DESCRIPTION	DWN	CHGD	DATE
A	ISSUED FOR REVIEW	MWW	MJ	8/26/11
B	UPDATED ROUTES: ADDED NWDATA	MWW	MJ	8/31/11
C	UPDATED ROUTE: REMOVED ROUTE OPTION 2	MWW	MJ	9/16/11
D	ND-49C FILING	MWW	MJ	9/20/11
E	REBUSSED FOR ND-49C FILING	MWW	MJ	10/18/11
F	REBUSSED FOR ND-49C FILING	MWW	MJ	10/21/11
G	REBUSSED FOR ND-49C FILING	MWW	MJ	10/24/11

PREPARED BY:  
ROONEY ENGINEERING  
CENTENNIAL, COLORADO

**ENBRIDGE PIPELINES (NORTH DAKOTA) LLC**

**LITTLE MUDDY STATION CONNECTION PROJECT**  
ROUTE OVERVIEW  
AERIAL

WILLIAMS COUNTY NORTH DAKOTA

SCALE: AS SHOWN DATE: PROJECT NO.: DRAWING NO.:  
DWN BY: MWW 8/26/11 2827-M-0001  
CHGD BY: MJ 8/30/11  
ENGR: MJ 8/26/11 REVISION: G





**LEGEND**

PROPOSED ROUTE		NWI WETLAND	
EXISTING ENBRIDGE PIPELINE		DELINEATED WETLAND	
STUDY AREA		DELINEATED WATER BODY	
ENVIRONMENTAL CORRIDOR		USGS STREAM	
SECTION LINES			
PARCELS			
STATION BOUNDS			

**GENERAL NOTES**

1. ALL DISTANCES ARE IN FEET UNLESS OTHERWISE NOTED.

2. THE PROPOSED ROUTE IS SHOWN AS AN EXAMPLE OF A POSSIBLE ROUTE. THE ACTUAL ROUTE WILL BE DETERMINED BY THE ENGINEER.

3. THE PROPOSED ROUTE IS SUBJECT TO CHANGE WITHOUT NOTICE.

4. THE PROPOSED ROUTE IS SUBJECT TO APPROVAL BY THE NECESSARY AGENCIES.

5. THE PROPOSED ROUTE IS SUBJECT TO THE NECESSARY PERMITS.

6. THE PROPOSED ROUTE IS SUBJECT TO THE NECESSARY EASEMENTS.

7. THE PROPOSED ROUTE IS SUBJECT TO THE NECESSARY RIGHTS-OF-WAY.

8. THE PROPOSED ROUTE IS SUBJECT TO THE NECESSARY UTILITIES CROSSINGS.

9. THE PROPOSED ROUTE IS SUBJECT TO THE NECESSARY ENVIRONMENTAL IMPACT STATEMENTS.

10. THE PROPOSED ROUTE IS SUBJECT TO THE NECESSARY REGULATORY REQUIREMENTS.

**REVISIONS**

REV. NO.	DESCRIPTION	DWN	CHKD	DATE
A	ISSUED FOR REVIEW	MWW	MJ	9/1/11
B	UPDATED ROUTES	MWW	MJ	9/6/11
C	UPDATED ROUTES & ENVIRONMENTAL CORR.	MWW	MJ	9/15/11
D	ND-45C FILING	MWW	MJ	9/26/11
E	REBUILT FOR ND-45C FILING	MWW	MJ	10/18/11
F	REBUILT FOR ND-45C FILING	MWW	MJ	10/21/11
G	REBUILT FOR ND-45C FILING	MWW	MJ	10/24/11

**ENBRIDGE PIPELINES (NORTH DAKOTA) LLC**

**LITTLE MUDDY STATION CONNECTION PROJECT AERIAL ROUTE MAP**

WILLIAMS COUNTY NORTH DAKOTA

SHEET 1

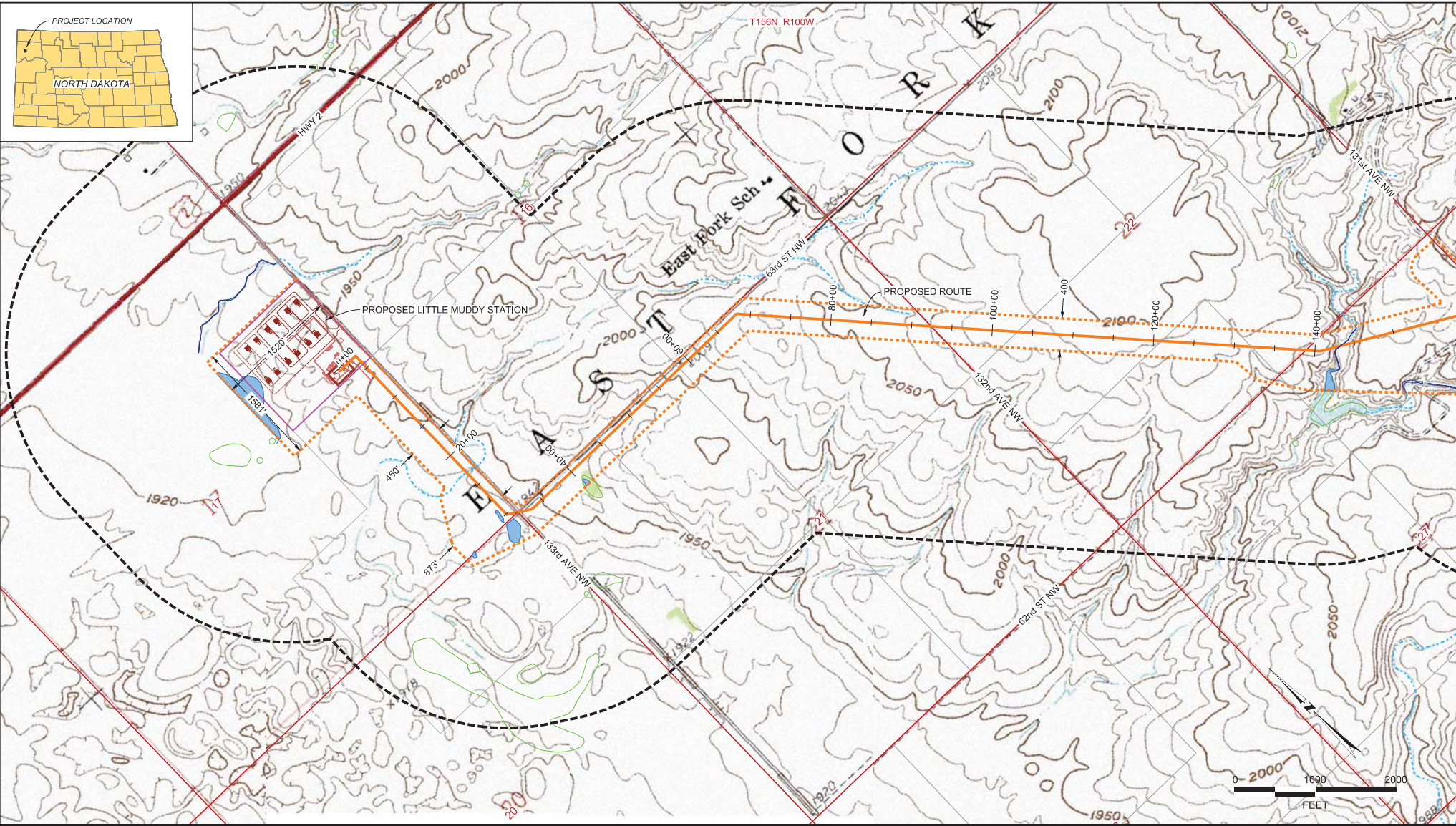
SCALE: AS SHOWN DATE PROJECT NO. DRAWING NO.

DWN BY: MW 9/1/11 2827-MA-011

CHKD BY: MJ 9/1/11

ENGR: MJ 9/1/11 REVISION: G

REVISIONS: G



LEGEND

- PROPOSED ROUTE
- EXISTING ENBRIDGE PIPELINE
- STUDY AREA
- ENVIRONMENTAL CORRIDOR
- SECTION LINES
- PARCELS
- STATION BOUNDS

- NW1 WETLAND
- DELIMITED WETLAND
- DELIMITED WATER BODY
- USGS STREAM

GENERAL NOTES

REV.	DESCRIPTION	DWN	CHKD	DATE
A	ISSUED FOR REVIEW	MWW	MJ	9/1/11
B	UPDATED ROUTES	MWW	MJ	9/6/11
C	UPDATED ROUTES & ENVIRONMENTAL CORR.	MWW	MJ	9/15/11
D	ND-45C FILING	MWW	MJ	9/26/11
E	REISSUED FOR ND-45C FILING	MWW	MJ	10/18/11
F	REISSUED FOR ND-45C FILING	MWW	MJ	10/21/11
G	REISSUED FOR ND-45C FILING	MWW	MJ	10/24/11

REVISIONS

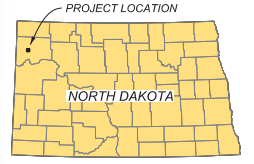
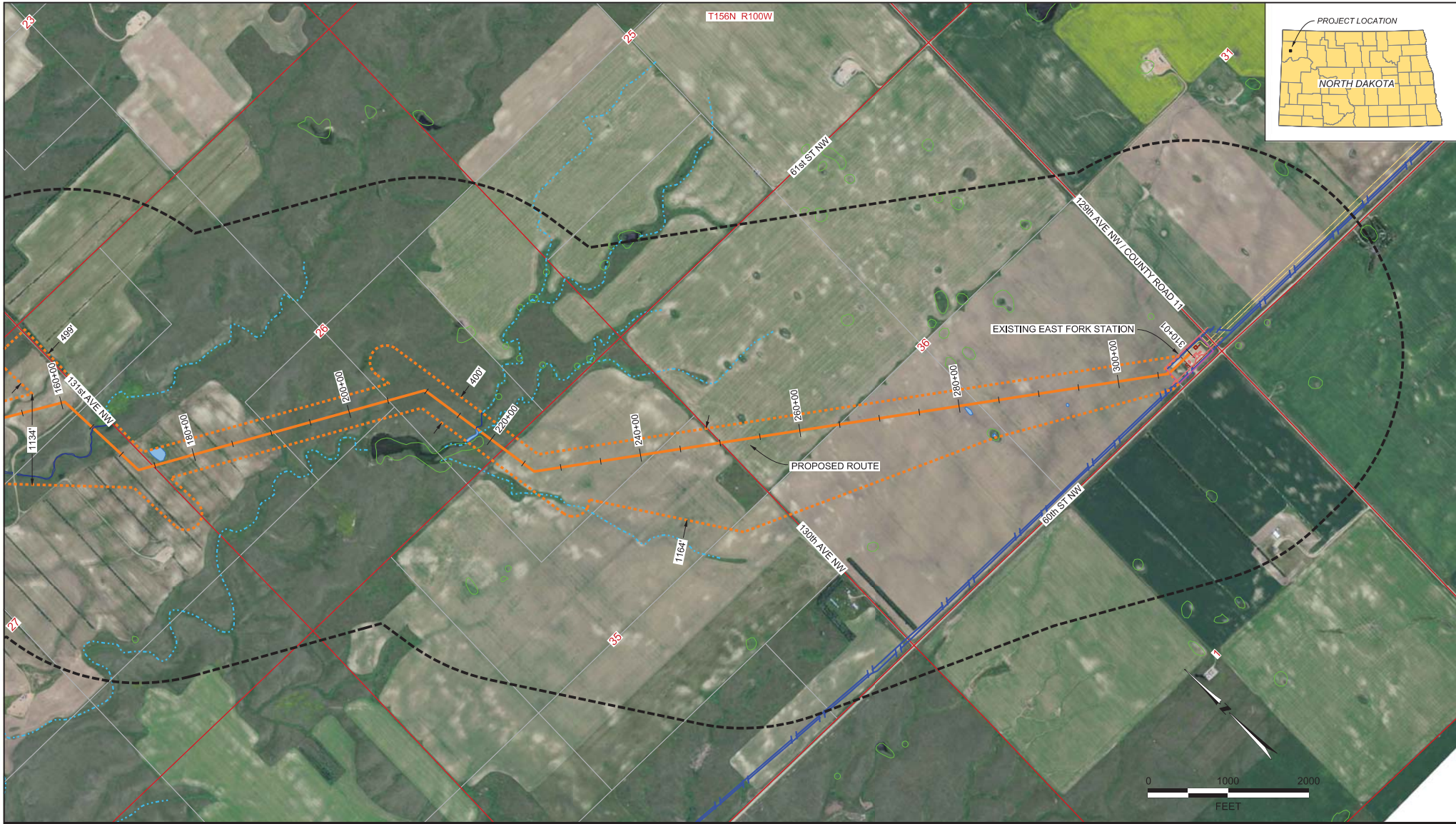
**ENBRIDGE PIPELINES (NORTH DAKOTA) LLC**

**LITTLE MUDDY STATION CONNECTION PROJECT TOPO ROUTE MAP**

SHEET 1

WILLIAMS COUNTY NORTH DAKOTA

SCALE:	AS SHOWN	DATE:	9/1/11	PROJECT NO.:	2827-M-0013	DRAWING NO.:	
DWN BY:	MWW	CHKD BY:	MJ	DATE:	9/1/11	REVISED BY:	G
ENGR:	MJ	DATE:	9/1/11	REVISED BY:	G	DATE:	



LEGEND

GENERAL NOTES

- PROPOSED ROUTE
- EXISTING ENBRIDGE PIPELINE
- STUDY AREA
- ENVIRONMENTAL CORRIDOR
- SECTION LINES
- PARCELS
- STATION BOUNDS



- NW WETLAND
- DELINEATED WETLAND
- DELINEATED WATER BODY
- USGS STREAM

REVISIONS					
REV. NO.	DESCRIPTION	DWN	CHKD	DATE	
A	ISSUED FOR REVIEW	MWW	MJ	9/1/11	
B	UPDATED ROUTES	MWW	MJ	9/6/11	
C	UPDATED ROUTES-REMOVED ROUTE OPTION 2	MWW	MJ	9/15/11	
D	ND-45C FILING	MWW	MJ	9/26/11	
E	REBUSSED FOR ND-45C FILING	MWW	MJ	10/18/11	
F	REBUSSED FOR ND-45C FILING	MWW	MJ	10/20/11	
G	REBUSSED FOR ND-45C FILING	MWW	MJ	10/24/11	

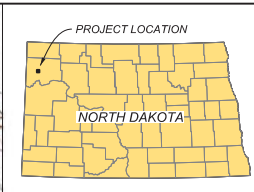
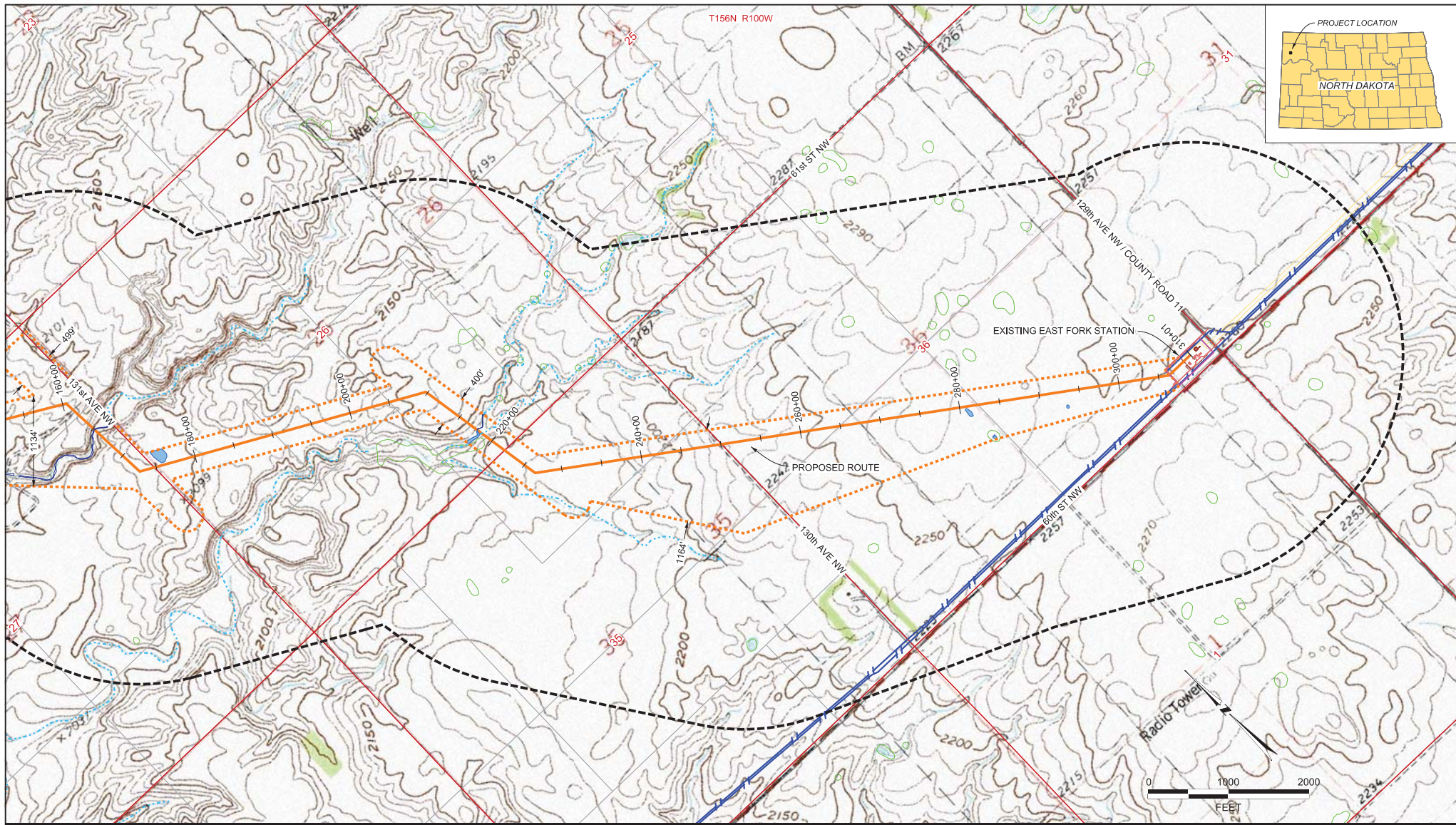
PREPARED BY  
ROONEY ENGINEERING  
GENERAL, COLORADO

**ENBRIDGE PIPELINES (NORTH DAKOTA) LLC**

**LITTLE MUDDY STATION CONNECTION PROJECT**  
**AERIAL ROUTE MAP**

WILLIAMS COUNTY SHEET 2 NORTH DAKOTA

SCALE: AS SHOWN	DATE	PROJECT NO.	DRAWING NO.
DWN BY: MW	9/1/11	2827-M-0012	
CHKD BY: MJ	9/1/11		
ENGR: MJ	9/1/11		
REVISION:			G



LEGEND

- PROPOSED ROUTE
- EXISTING ENBRIDGE PIPELINE
- STUDY AREA
- ENVIRONMENTAL CORRIDOR
- SECTION LINES
- PARCELS
- STATION BOUNDS
- NWI WETLAND
- DELINEATED WETLAND
- DELINEATED WATER BODY
- USGS STREAM

GENERAL NOTES

REVISIONS

REV. NO.	DESCRIPTION	DWN	CHKD	DATE
A	ISSUED FOR REVIEW	MWW	MJ	9/7/11
B	UPDATED ROUTES	MWW	MJ	9/6/11
C	UPDATED ROUTES: REMOVED ROUTE OPTION 2	MWW	MJ	9/15/11
D	ND-45C FLING	MWW	MJ	9/26/11
E	REBUSIED FOR ND-45C FLING	MWW	MJ	10/18/11
F	REBUSIED FOR ND-45C FLING	MWW	MJ	10/20/11
G	REBUSIED FOR ND-45C FLING	MWW	MJ	10/24/11

PREPARED BY  
ROONEY ENGINEERING  
CENTENNIAL, COLORADO

**ENBRIDGE PIPELINES (NORTH DAKOTA) LLC**

LITTLE MUDDY STATION  
CONNECTION PROJECT  
TOPO ROUTE MAP

WILLIAMS COUNTY NORTH DAKOTA  
SHEET 2

SCALE:	AS SHOWN	DATE	PROJECT NO.	DRAWING NO.
DWN BY:	MW	9/7/11	2827-M-0014	
CHKD BY:	MJ	9/11/11		
ENGR:	MJ	9/11/11	REVISION:	G