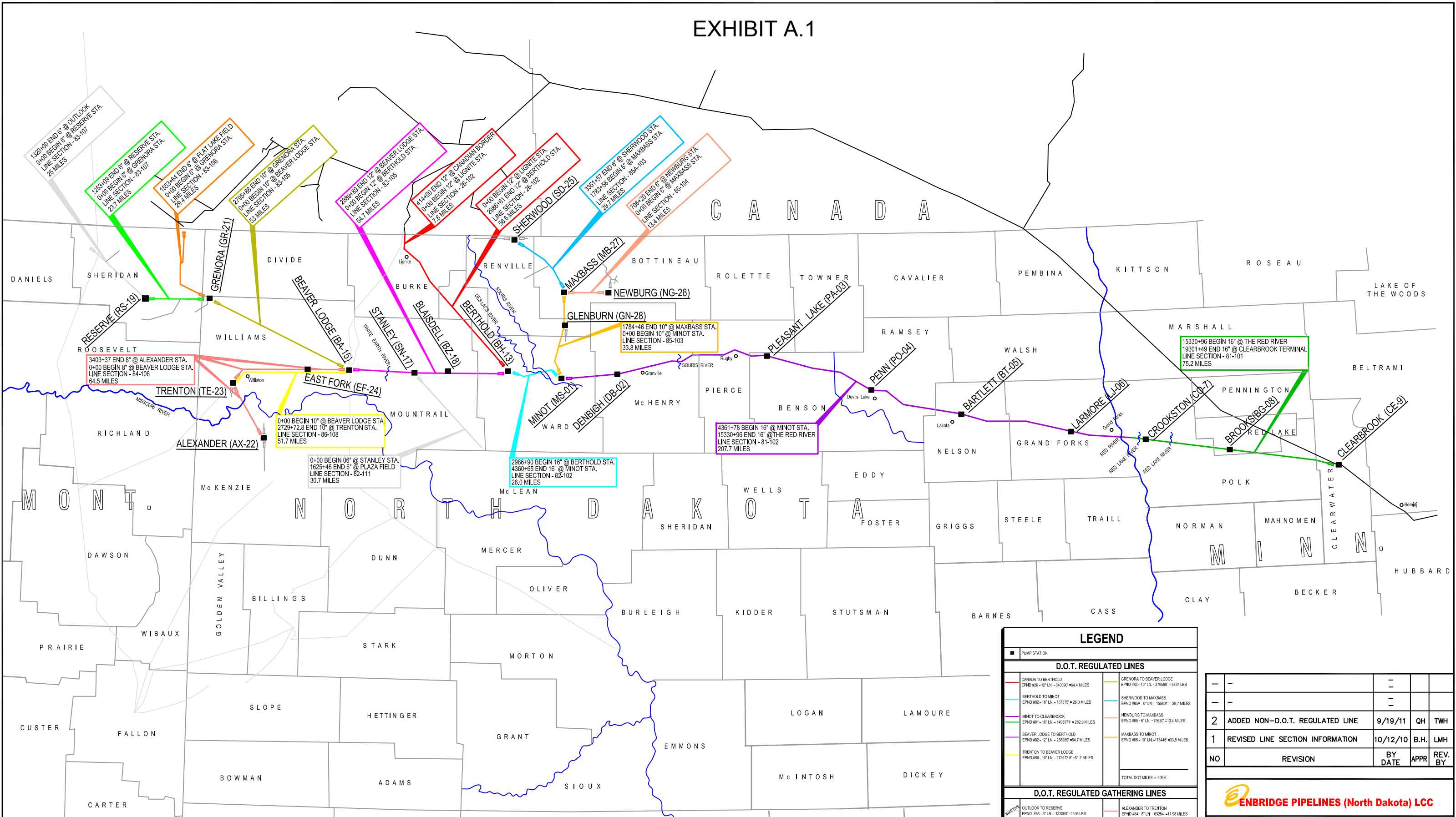




**LITTLE MUDDY STATION CONNECTION PROJECT
TABLE OF CONTENTS**

Exhibit A	Overview Maps
Exhibit A.1	EPND System Map
Exhibit A.2	Little Muddy Station Project Overview Map

EXHIBIT A.1



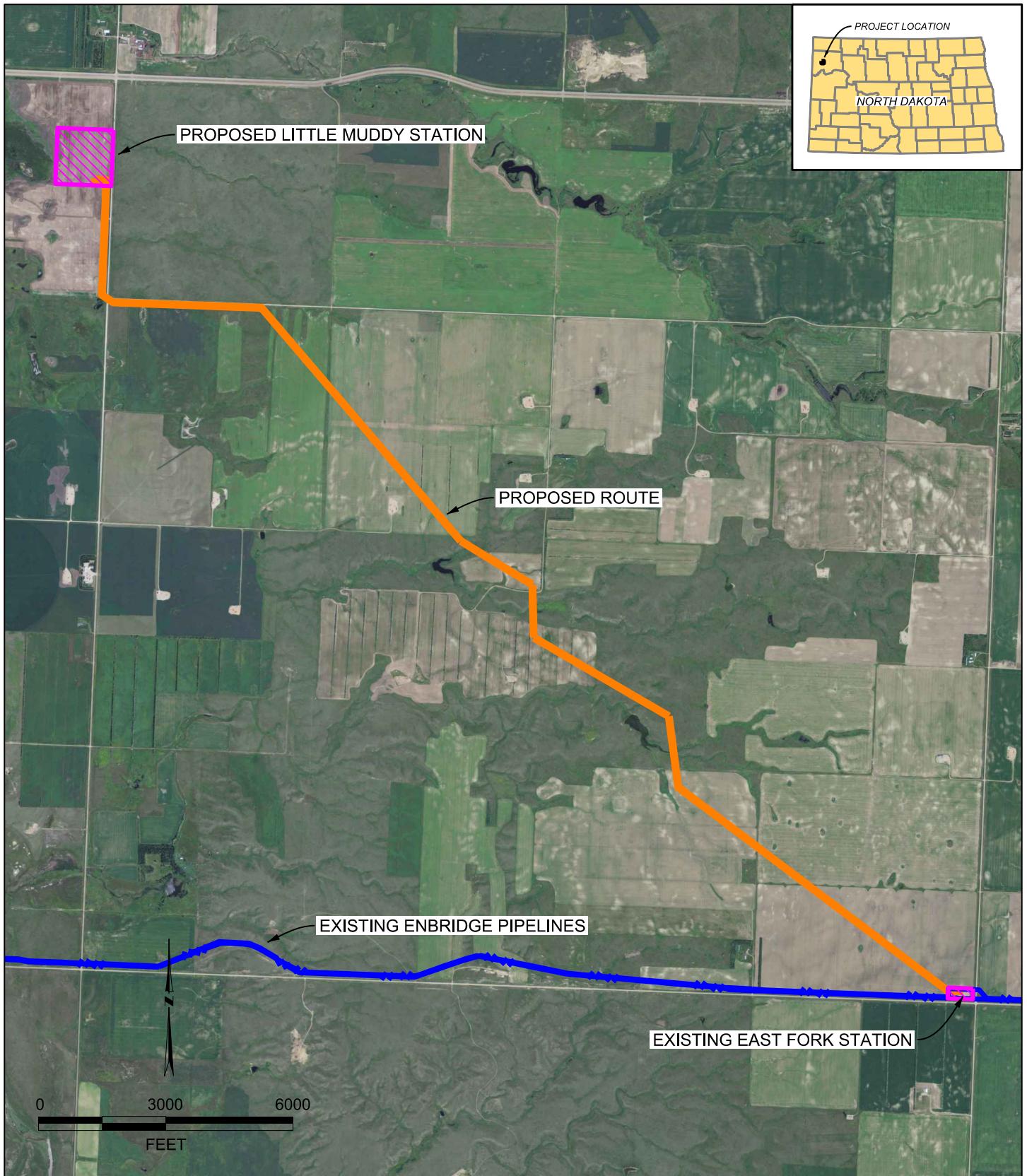
LEGEND	
■	PUMP STATION
D.O.T. REGULATED LINES	
—	CANADA TO BERTHOLD EPND #25 - 12" LN. - 340987' = 64.4 MILES
—	BERTHOLD TO MINOT EPND #82 - 18" LN. - 137375' = 26.0 MILES
—	MINOT TO CLEARBROOK EPND #81 - 18" LN. - 149371' = 282.9 MILES
—	BEAVER LODGE TO BERTHOLD EPND #82 - 12" LN. - 288989' = 54.7 MILES
—	TRENTON TO BEAVER LODGE EPND #86 - 10" LN. - 272972.8' = 51.7 MILES
—	GRENORA TO BEAVER LODGE EPND #83 - 10" LN. - 276985' = 53 MILES
—	SHERWOOD TO MAXBASS EPND #85A - 6" LN. - 158801' = 29.7 MILES
—	NEWBURG TO MAXBASS EPND #85 - 6" LN. - 798207' = 13.4 MILES
—	MAXBASS TO MINOT EPND #85 - 10" LN. - 178446' = 33.8 MILES
—	OUTLOOK TO RESERVE EPND #83 - 6" LN. - 132007' = 25 MILES
—	RESERVE TO GRENORA EPND #83 - 6" LN. - 125307' = 23.7 MILES
—	FLAT LAKE TO GRENORA EPND #83 - 6" LN. - 155364' = 28.4 MILES
—	ALEXANDER TO TRENTON EPND #84 - 6" LN. - 63254' = 11.98 MILES
—	TRENTON TO BEAVER LODGE EPND #84 - 6" LN. - 278936' = 52.45 MILES
TOTAL DOT REGULATED MILES = 609.6	
D.O.T. REGULATED GATHERING LINES	
—	WAREHOUSING PLAZA FIELD TO STANLEY EPND - 6" LN. - 162546' = 30.7 MILES
TOTAL DOT GATHERING MILES = 142.53	
NON-D.O.T. REGULATED GATHERING LINES	
—	WAREHOUSING PLAZA FIELD TO STANLEY EPND - 6" LN. - 162546' = 30.7 MILES
TOTAL NONDOT GATHERING MILES = 30.7	

—	—	—	—
2	ADDED NON-D.O.T. REGULATED LINE	9/19/11	QH TWH
1	REVISED LINE SECTION INFORMATION	10/12/10	B.H. LMH
NO	REVISION	BY DATE	APPR REV. BY

MN, ND, MT SYSTEM
SYSTEM MAP
 LINE SECTION INFORMATION

PROJECT:		
SCALE: NO SCALE	DATE: 3/20/2003	DRAWN: G.J.H.
CHECK: G. HARRON	APPR: G. HARRON	DATE: 3/20/2003

B-0-0.5-10002-0-300-LNINFO



LEGEND




- STATION 
- PROPOSED ROUTE 
- EXISTING ENBRIDGE PIPELINE 

EXHIBIT A.2

PREPARED BY
ROONEY ENGINEERING
CENTENNIAL, COLORADO



ENBRIDGE PIPELINES (NORTH DAKOTA) LLC

LITTLE MUDDY STATION
CONNECTION PROJECT
WILLIAMS COUNTY, NORTH DAKOTA
T156N, R100W, SECTIONS 17, 20-22, 26, 27, 35, 36

SCALE:	AS SHWN	DATE	PROJECT NO.	DRAWING NO.	
DWN BY:	MW	9/26/11		2827-M-0004	
CHKD BY:	BM	9/26/11		REVISION:	E
ENGR:	BM	9/26/11			