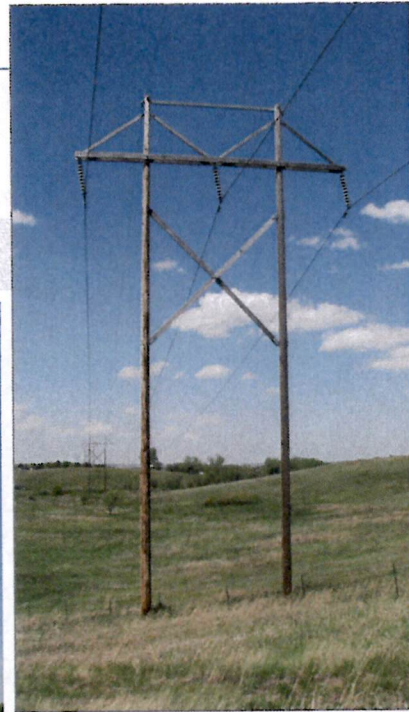
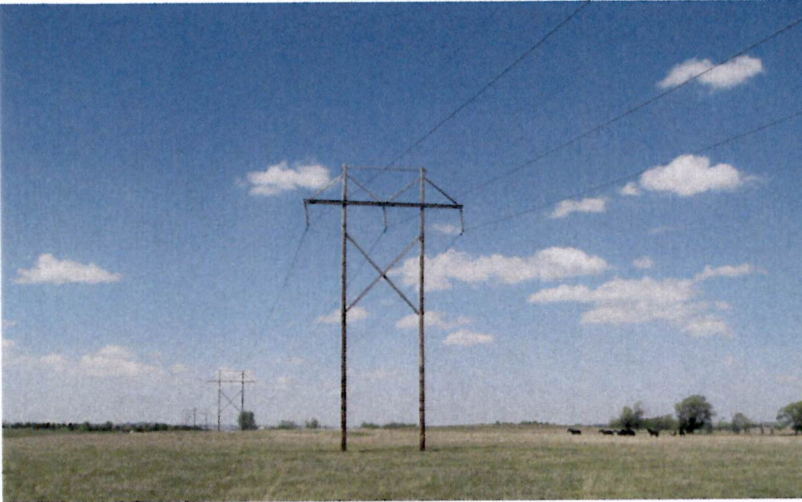


APPLICATION FOR A CORRIDOR
CERTIFICATE AND A ROUTE PERMIT



Southwest Oliver 230 kV Transmission Line
Supplemental Filing

Case No. PU-11-620

February 2012



See docket
No. 23



30 PU-11-620
Exhibit 2

Filed: 3/5/2012

Pages: 126

Allete, Inc.

DR