

NO.	DATE	REVISION DESCRIPTION	BY	APPROVED
A	02/17/12	ISSUED FOR PSC REVIEW	ARK	MJW
B	07/22/13	UPDATED STRUCTURE HEIGHTS	ARK	MJW
C	09/25/13	ISSUED FOR BID	ARK	MJW

NO.	DATE	REVISION DESCRIPTION	BY	APPROVED
0	10/31/13	ISSUED FOR CONSTRUCTION	ARK	MJW
1	11/22/13	ALIGNMENT SHIFT STRUCTURES 1-14	ARK	MJW
2	12/12/13	LOCATION CHANGE STRUCTURES 39-40	ARK	MJW

DRAWN: ARK
 CHECKED: MJW
 APPROVED: MJW
 DATE: 12/12/13

This document (IFC Rev 0) was originally issued and sealed by Mark Wolcott, Registration Number PE-7303 on 10/31/13 and the original documents are stored at Minnesota Power, TSE Dept. (30 W. Superior St., Duluth, MN).



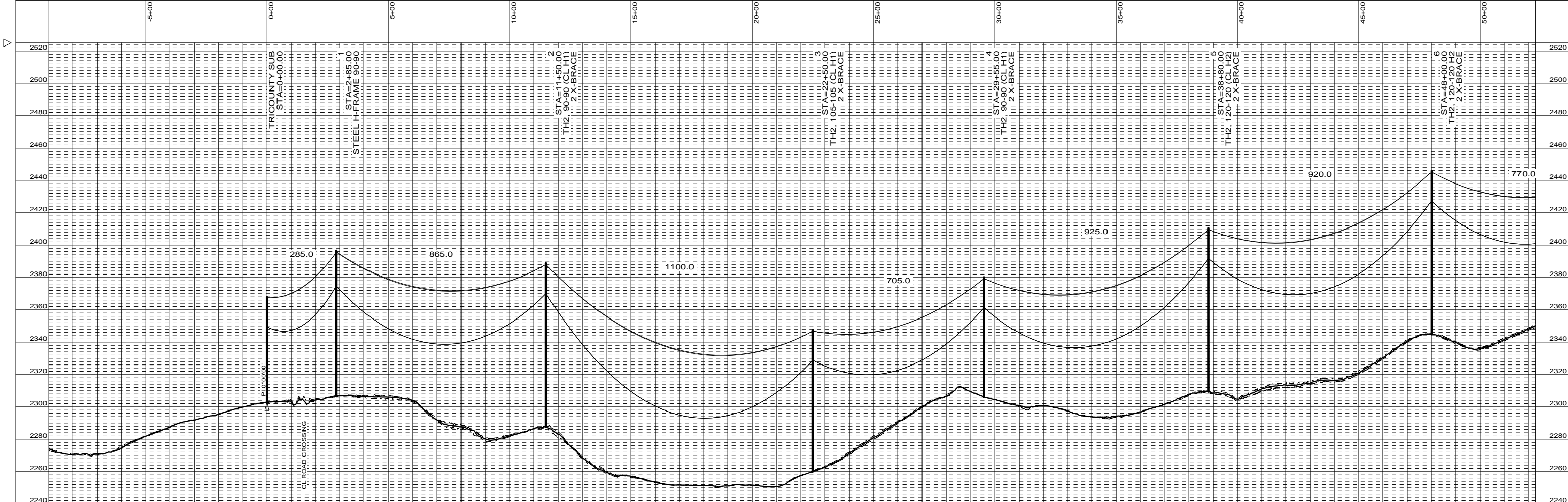
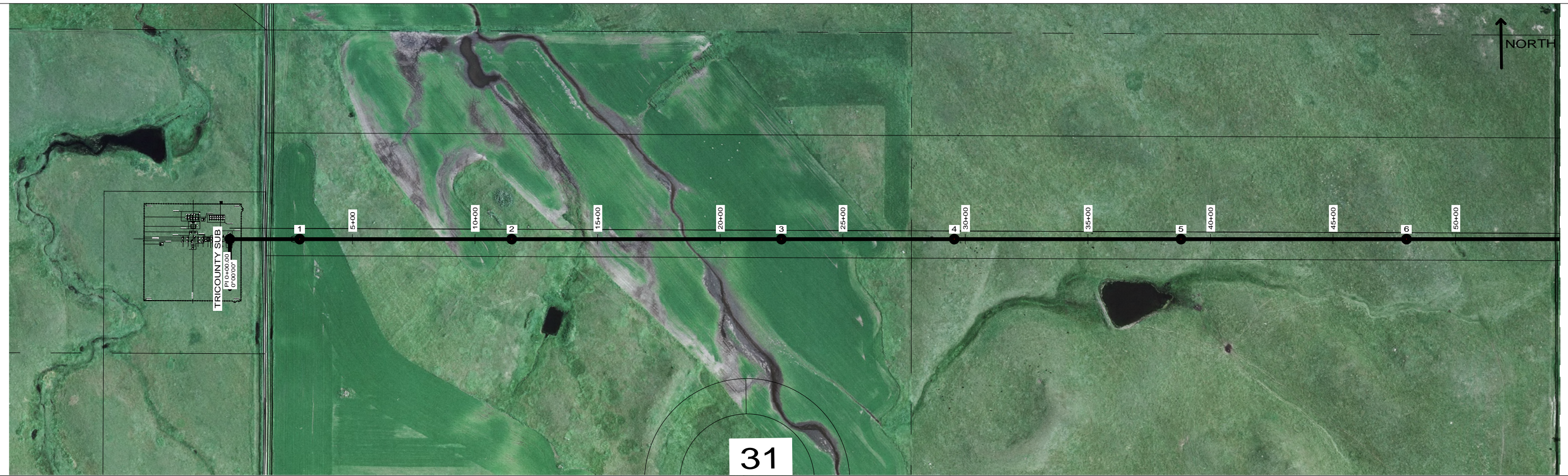
230 kV TRI-COUNTY - BISON
 LINE NO. 103

SHEET 1 of 12	REV. 2
MD +32899	

FILE:



MICROFILMED	CODE
/ /	0142 2200 1140



NO.	DATE	REVISION DESCRIPTION	BY	APPROVED	NO.	DATE	REVISION DESCRIPTION	BY	APPROVED
A	02/17/12	ISSUED FOR PSC REVIEW	ARK	MJW	0	10/31/13	ISSUED FOR CONSTRUCTION	ARK	MJW
B	07/22/13	UPDATED STRUCTURE HEIGHTS	ARK	MJW	1	11/22/13	ALIGNMENT SHIFT STRUCTURES 1-14	ARK	MJW
C	09/25/13	ISSUED FOR BID	ARK	MJW	2	12/12/13	LOCATION CHANGE STRUCTURES 39-40	ARK	MJW

DRAWN: ARK
 CHECKED: MJW
 APPROVED: MJW
 DATE: 12/12/13

THIS DOCUMENT (IFC REV 0) WAS
 ORIGINALLY ISSUED AND SEALED BY MARK
 WOLCOTT, REGISTRATION NUMBER
 PE-7903 ON 10/31/13 AND THE ORIGINAL
 DOCUMENTS ARE STORED AT MINNESOTA
 POWER, TSE DEPT. (30 W. SUPERIOR
 ST., DULUTH, MN).

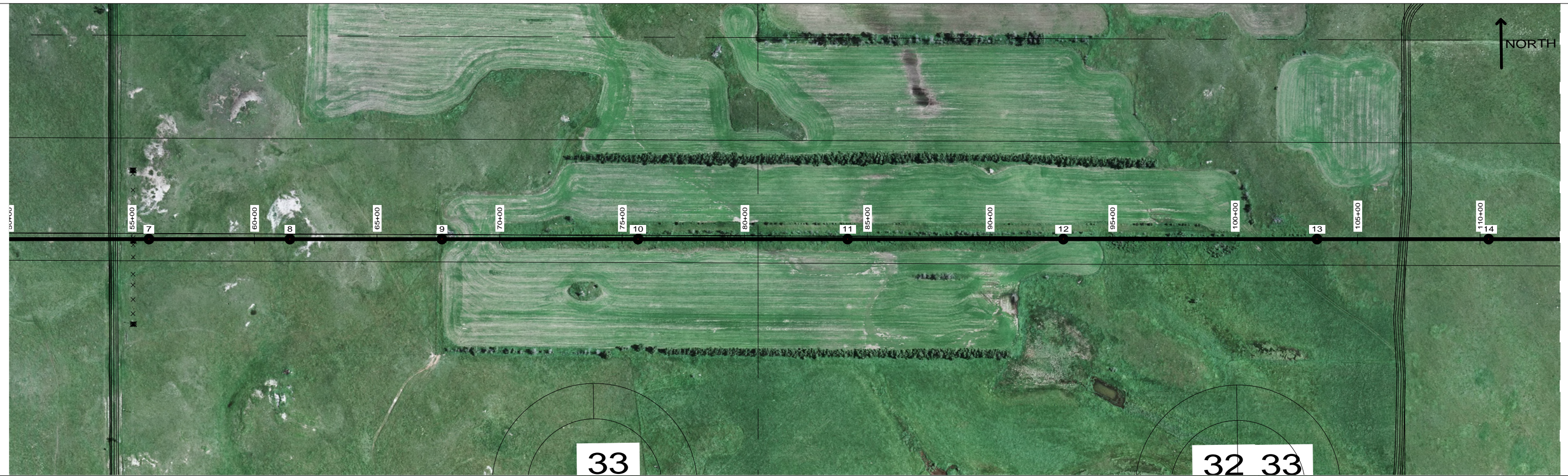


**230 KV TRI-COUNTY - BISON
 LINE NO. 103**

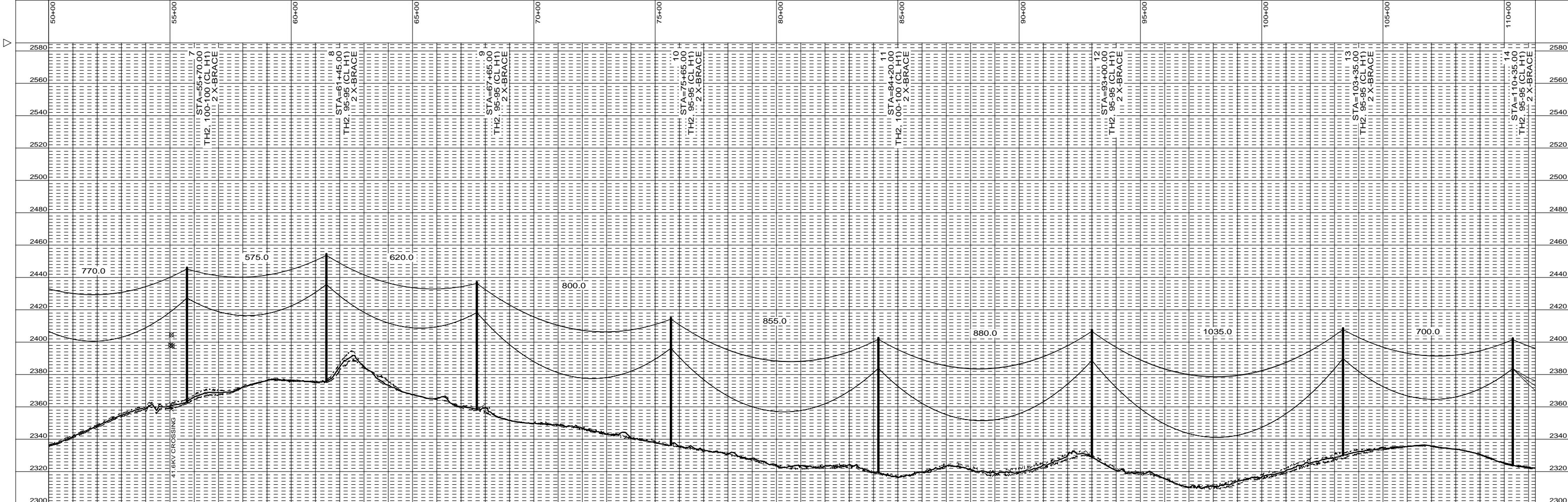
SHEET 2 OF 12, REV. 2
MD +32899

FILE:

MICROFILMED	CODE
/ /	0142 2200 1140



NORTH



NO.	DATE	REVISION DESCRIPTION	BY	APPROVED	NO.	DATE	REVISION DESCRIPTION	BY	APPROVED
A	02/17/12	ISSUED FOR PSC REVIEW	ARK	MJW	0	10/31/13	ISSUED FOR CONSTRUCTION	ARK	MJW
B	07/22/13	UPDATED STRUCTURE HEIGHTS	ARK	MJW	1	11/22/13	ALIGNMENT SHIFT STRUCTURES 1-14	ARK	MJW
C	09/25/13	ISSUED FOR BID	ARK	MJW	2	12/12/13	LOCATION CHANGE STRUCTURES 39-40	ARK	MJW

DRAWN: ARK
 CHECKED: MJW
 APPROVED: MJW
 DATE: 12/12/13

THIS DOCUMENT (IFC REV 0) WAS
 ORIGINALLY ISSUED AND SEALED BY MARK
 WOLCOTT, REGISTRATION NUMBER
 PE-7303 ON 10/31/13 AND THE ORIGINAL
 DOCUMENTS ARE STORED AT MINNESOTA
 POWER, TSE DEPT. (30 W. SUPERIOR
 ST., DULUTH, MN).



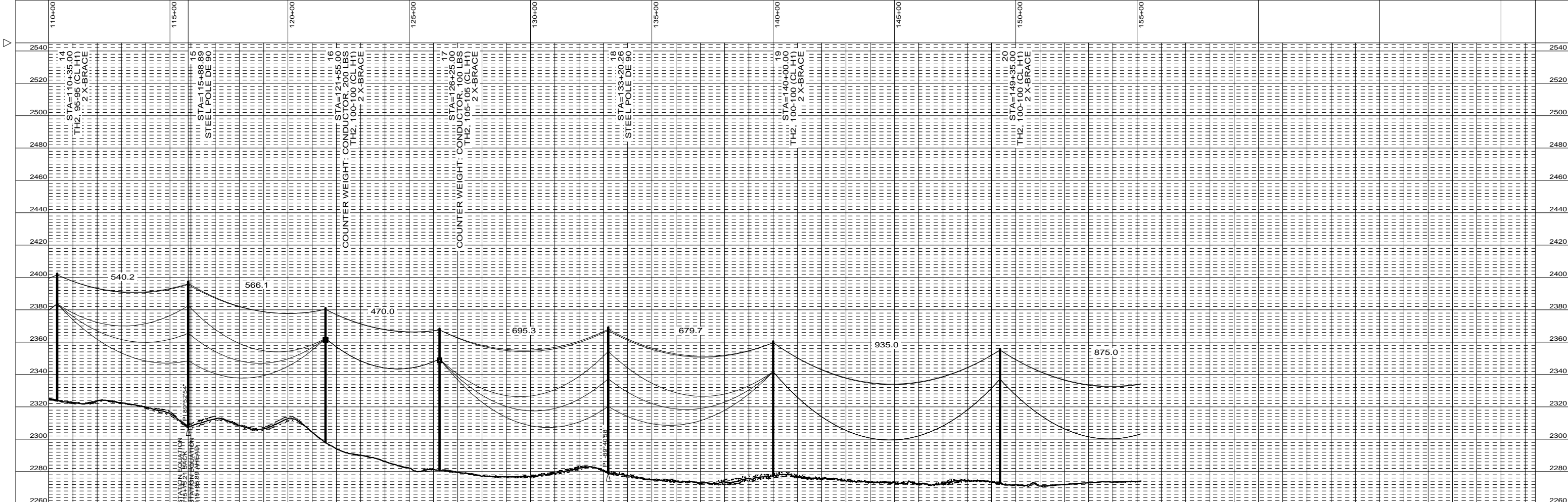
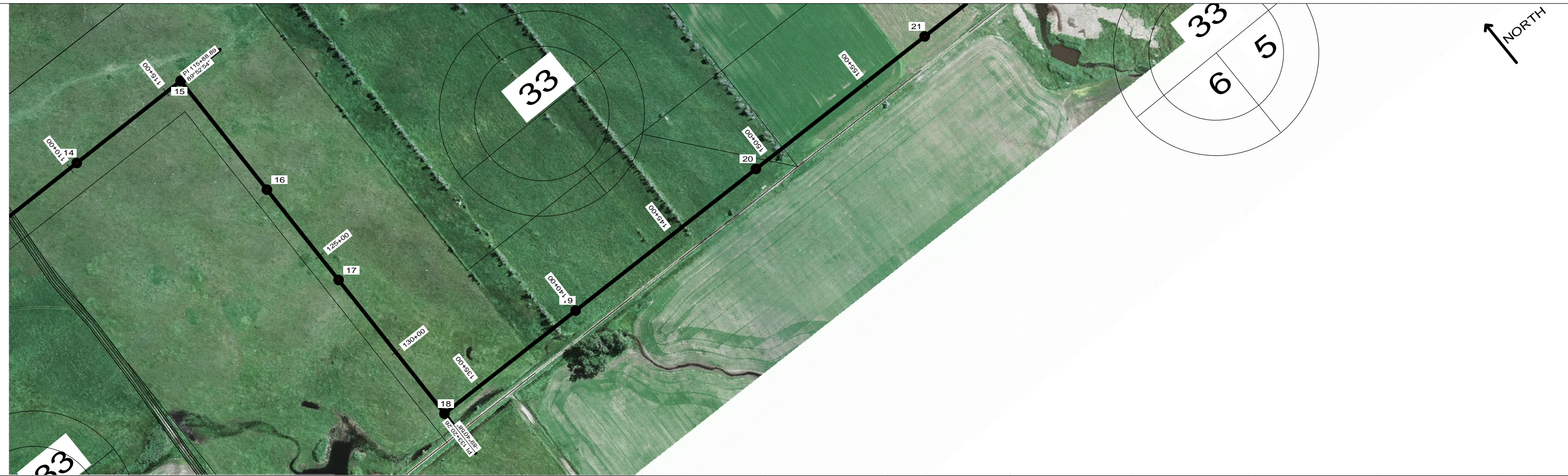
**230 KV TRI-COUNTY - BISON
 LINE NO. 103**

SHEET 3 OF 12, REV. 2

MD +32899

FILE:

MICROFILMED	CODE
/ /	0142 2200 1140



NO.	DATE	REVISION DESCRIPTION	BY	APPROVED	NO.	DATE	REVISION DESCRIPTION	BY	APPROVED
A	02/17/12	ISSUED FOR PSC REVIEW	ARK	MJW	0	10/31/13	ISSUED FOR CONSTRUCTION	ARK	MJW
B	07/22/13	UPDATED STRUCTURE HEIGHTS	ARK	MJW	1	11/22/13	ALIGNMENT SHIFT STRUCTURES 1-14	ARK	MJW
C	09/25/13	ISSUED FOR BID	ARK	MJW	2	12/12/13	LOCATION CHANGE STRUCTURES 39-40	ARK	MJW

DRAWN: ARK
 CHECKED: MJW
 APPROVED: MJW
 DATE: 12/12/13
 200.0 FT. — HORIZ. SCALE
 30.0 FT. — VERT. SCALE

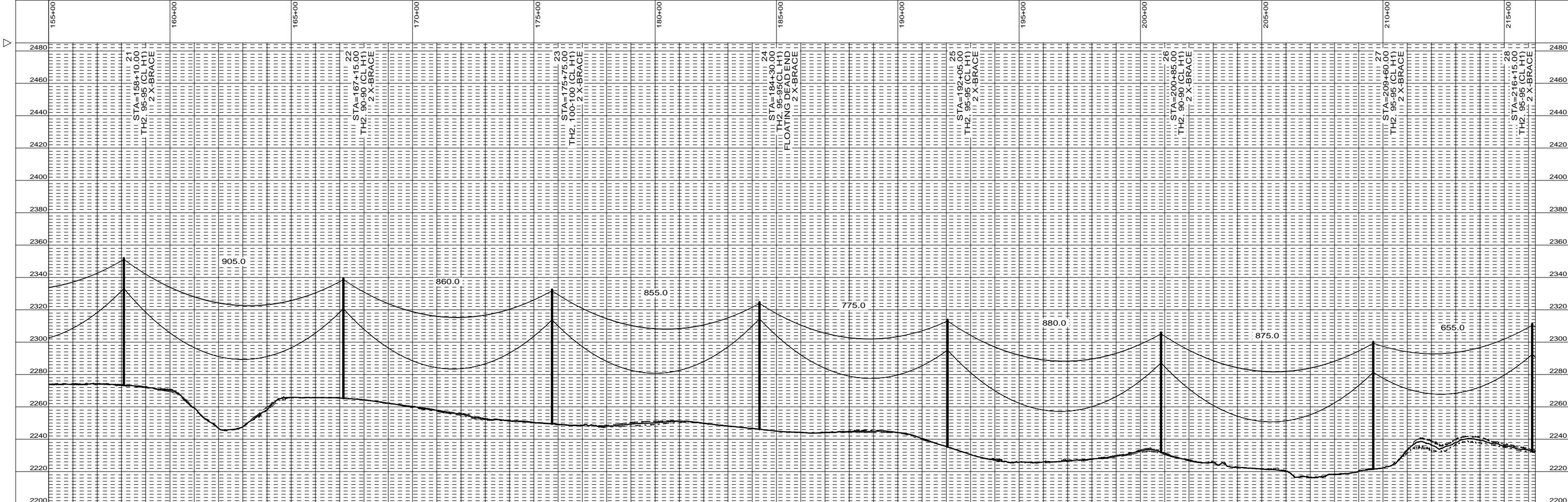
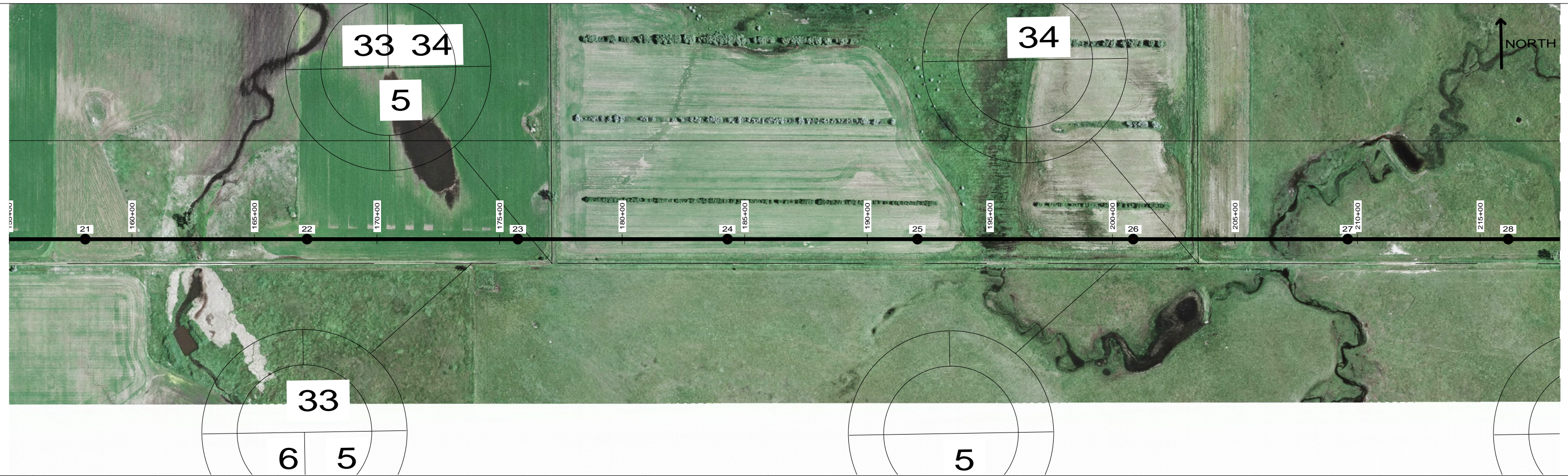
THIS DOCUMENT (IFC REV 0) WAS
 ORIGINALLY ISSUED AND SEALED BY MARK
 WOLCOTT, REGISTRATION NUMBER
 PE-7303 ON 10/31/13 AND THE ORIGINAL
 DOCUMENTS ARE STORED AT MINNESOTA
 POWER, TSE DEPT. (30 W. SUPERIOR
 ST., DULUTH, MN).



**230 KV TRI-COUNTY - BISON
 LINE NO. 103**

FILE:

MICROFILMED	CODE
/ /	0142 2200 1140



NO.	DATE	REVISION DESCRIPTION	BY	APPROVED	NO.	DATE	REVISION DESCRIPTION	BY	APPROVED
A	02/17/12	ISSUED FOR PSC REVIEW	ARK	MJW	0	10/31/13	ISSUED FOR CONSTRUCTION	ARK	MJW
B	07/22/13	UPDATED STRUCTURE HEIGHTS	ARK	MJW	1	11/22/13	ALIGNMENT SHIFT STRUCTURES 1-14	ARK	MJW
C	09/25/13	ISSUED FOR BID	ARK	MJW	2	12/12/13	LOCATION CHANGE STRUCTURES 39-40	ARK	MJW

DRAWN: ARK
 CHECKED: MJW
 APPROVED: MJW
 DATE: 12/12/13

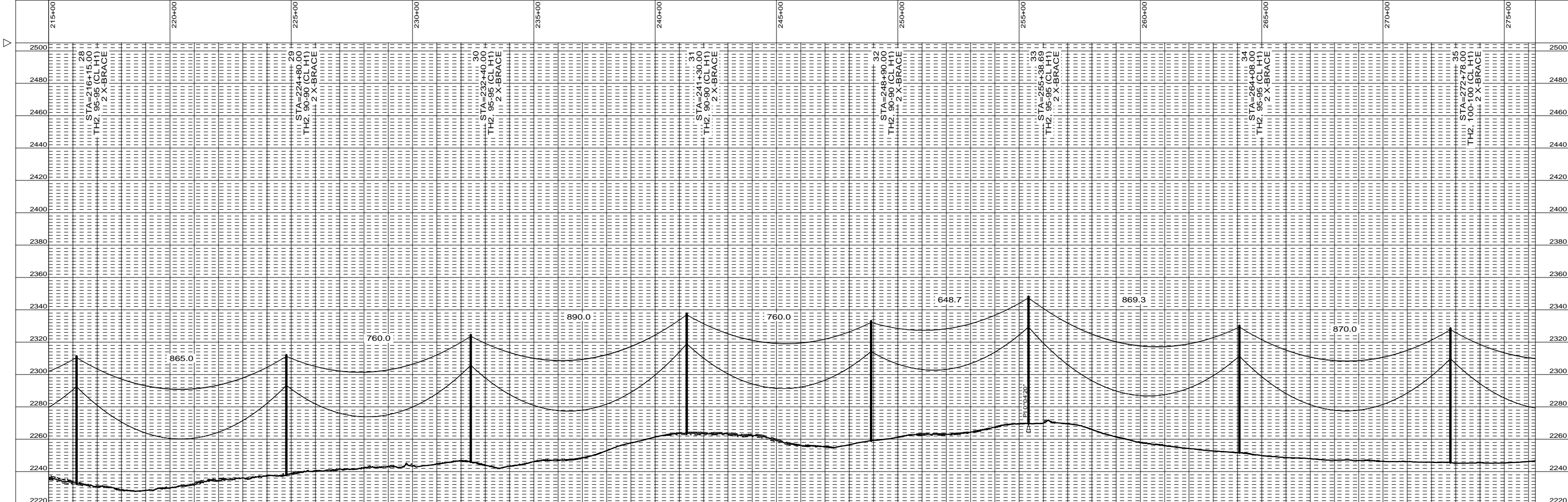
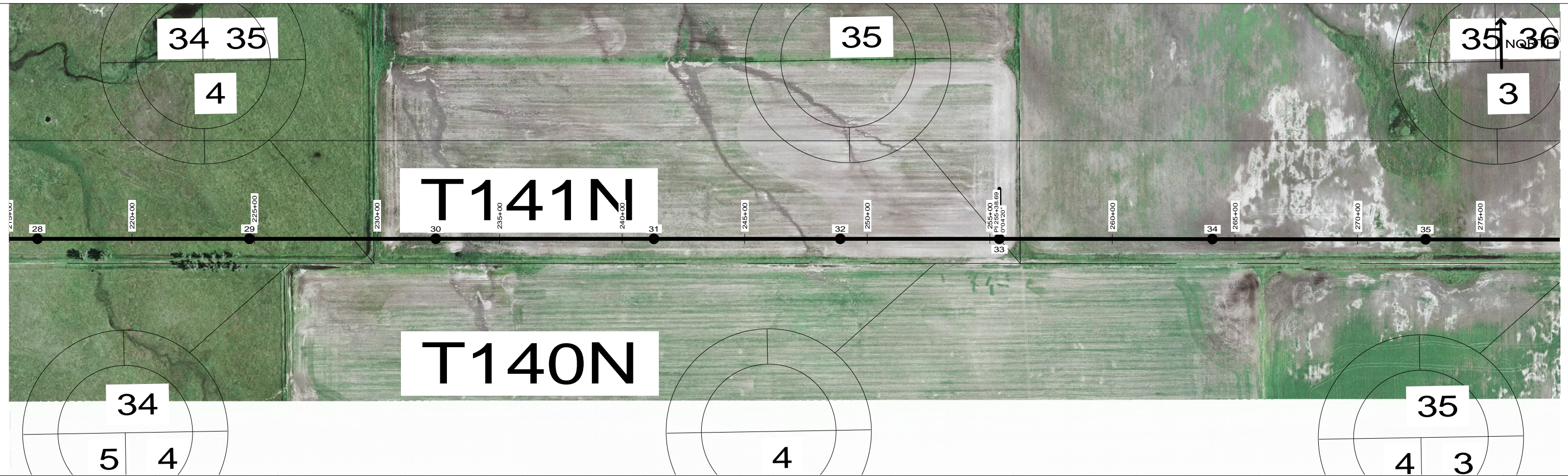
THIS DOCUMENT (IFC REV 0) WAS
 ORIGINALLY ISSUED AND SEALED BY MARK
 WOLCOTT, REGISTRATION NUMBER
 PE-7303 ON 10/31/13 AND THE ORIGINAL
 DOCUMENTS ARE STORED AT MINNESOTA
 POWER, TSE DEPT. (30 W. SUPERIOR
 ST., DULUTH, MN).



**230 KV TRI-COUNTY - BISON
 LINE NO. 103**

FILE:

MICROFILMED	CODE
/ /	0142 2200 1140



NO.	DATE	REVISION DESCRIPTION	BY	APPROVED	NO.	DATE	REVISION DESCRIPTION	BY	APPROVED
A	02/17/12	ISSUED FOR PSC REVIEW	ARK	MJW	0	10/31/13	ISSUED FOR CONSTRUCTION	ARK	MJW
B	07/22/13	UPDATED STRUCTURE HEIGHTS	ARK	MJW	1	11/22/13	ALIGNMENT SHIFT STRUCTURES 1-14	ARK	MJW
C	09/25/13	ISSUED FOR BID	ARK	MJW	2	12/12/13	LOCATION CHANGE STRUCTURES 39-40	ARK	MJW

DRAWN: ARK
 CHECKED: MJW
 APPROVED: MJW
 DATE: 12/12/13

THIS DOCUMENT (IFC REV 0) WAS
 ORIGINALLY ISSUED AND SEALED BY MARK
 WOLCOTT, REGISTRATION NUMBER
 PE-7303 ON 10/31/13 AND THE ORIGINAL
 DOCUMENTS ARE STORED AT MINNESOTA
 POWER, TSE DEPT. (30 W. SUPERIOR
 ST., DULUTH, MN).

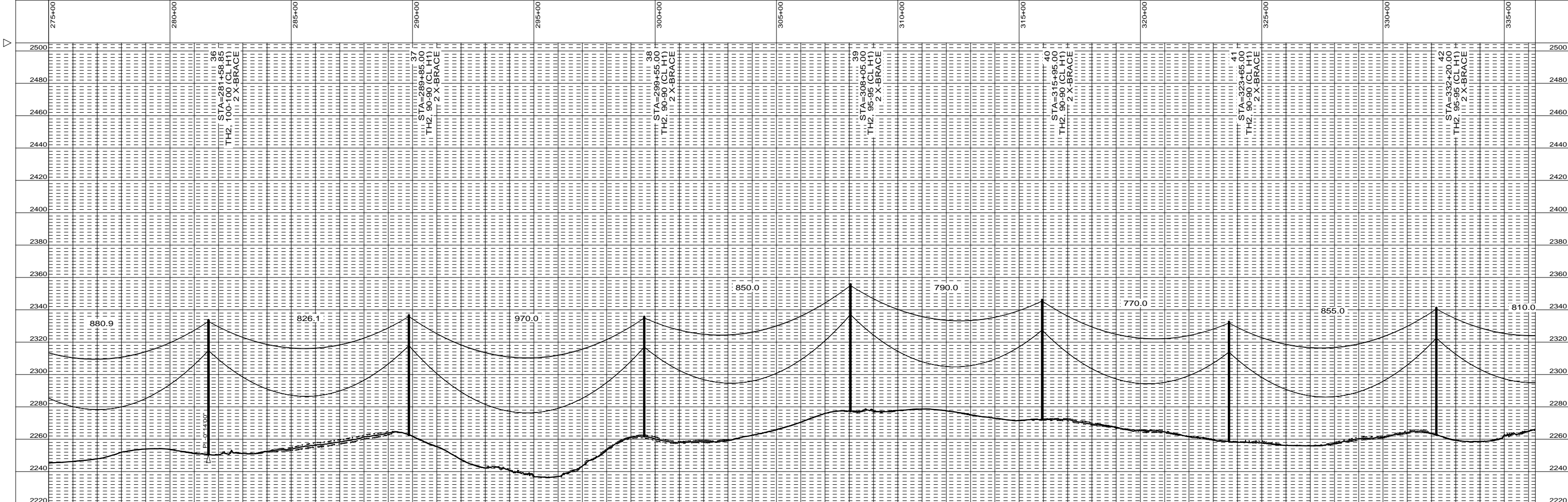
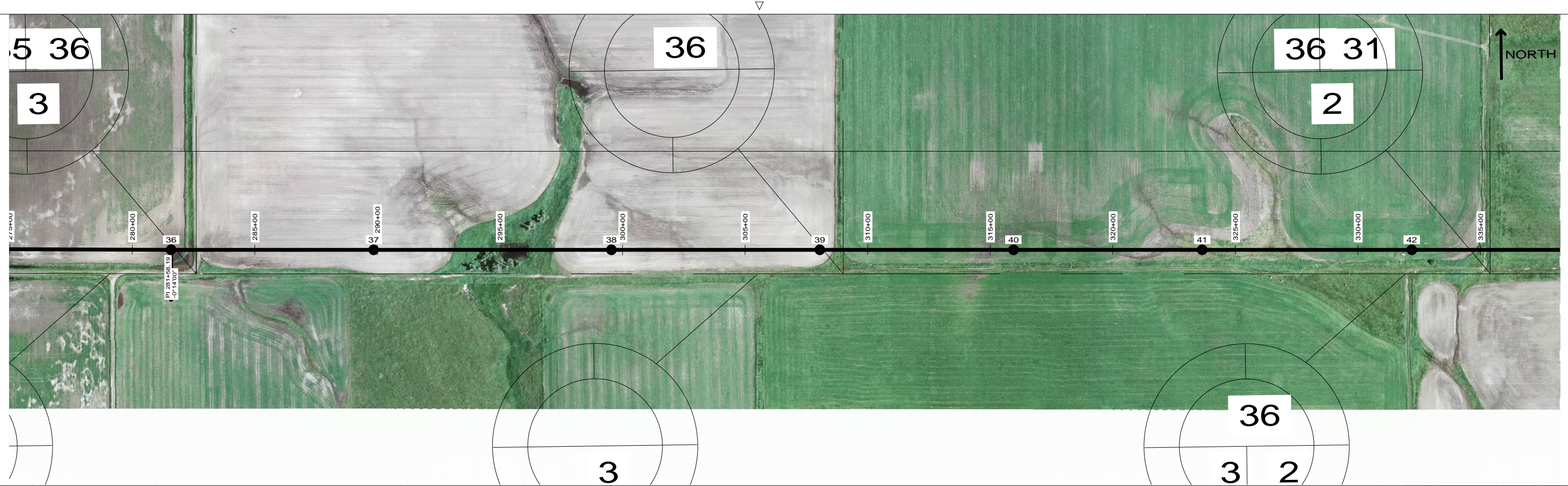


230 KV TRI-COUNTY - BISON
LINE NO. 103

SHEET 6 OF 12, REV. 2
MD +32899

FILE:

MICROFILMED	CODE
/ /	0142 2200 1140



NO.	DATE	REVISION DESCRIPTION	BY	APPROVED	NO.	DATE	REVISION DESCRIPTION	BY	APPROVED
A	02/17/12	ISSUED FOR PSC REVIEW	ARK	MJW	0	10/31/13	ISSUED FOR CONSTRUCTION	ARK	MJW
B	07/22/13	UPDATED STRUCTURE HEIGHTS	ARK	MJW	1	11/22/13	ALIGNMENT SHIFT STRUCTURES 1-14	ARK	MJW
C	09/25/13	ISSUED FOR BID	ARK	MJW	2	12/12/13	LOCATION CHANGE STRUCTURES 39-40	ARK	MJW

DRAWN: ARK
 CHECKED: MJW
 APPROVED: MJW
 DATE: 12/12/13

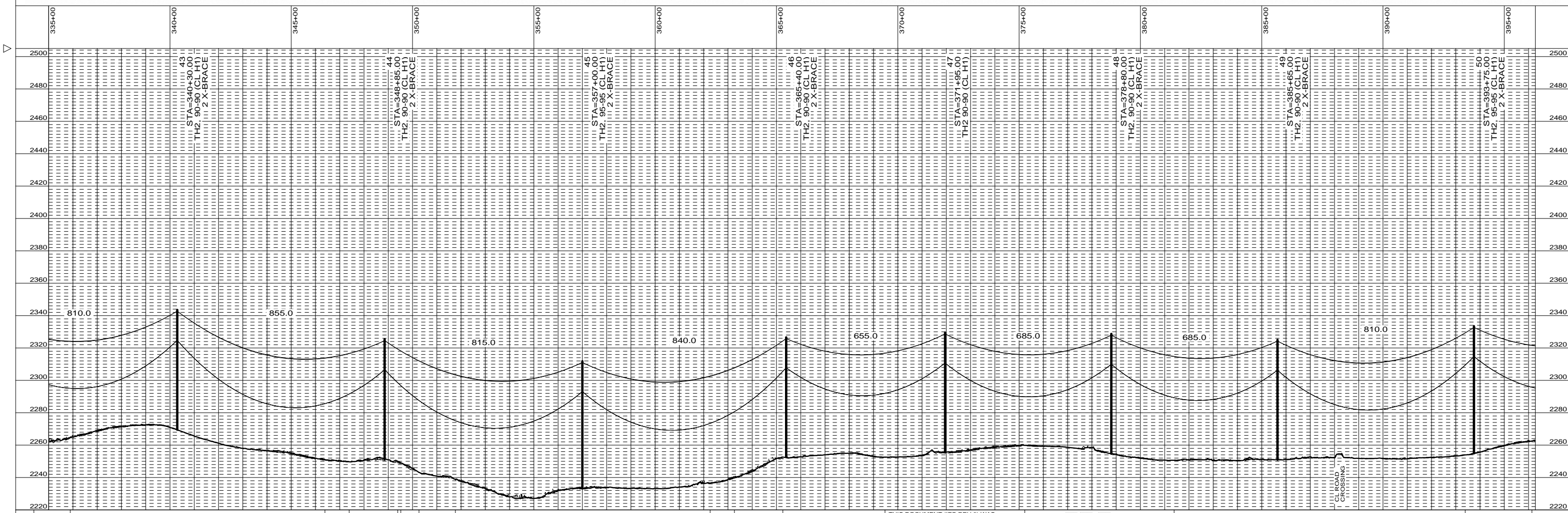
THIS DOCUMENT (IFC REV 0) WAS
 ORIGINALLY ISSUED AND SEALED BY MARK
 WOLCOTT, REGISTRATION NUMBER
 PE-7303 ON 10/31/13 AND THE ORIGINAL
 DOCUMENTS ARE STORED AT MINNESOTA
 POWER, TSE DEPT. (30 W. SUPERIOR
 ST., DULUTH, MN).



**230 KV TRI-COUNTY - BISON
 LINE NO. 103**

FILE:

MICROFILMED	CODE
/ /	0142 2200 1140



NO.	DATE	REVISION DESCRIPTION	BY	APPROVED	NO.	DATE	REVISION DESCRIPTION	BY	APPROVED
A	02/17/12	ISSUED FOR PSC REVIEW	ARK	MJW	0	10/31/13	ISSUED FOR CONSTRUCTION	ARK	MJW
B	07/22/13	UPDATED STRUCTURE HEIGHTS	ARK	MJW	1	11/22/13	ALIGNMENT SHIFT STRUCTURES 1-14	ARK	MJW
C	09/25/13	ISSUED FOR BID	ARK	MJW	2	12/12/13	LOCATION CHANGE STRUCTURES 39-40	ARK	MJW

DRAWN: ARK
 CHECKED: MJW
 APPROVED: MJW
 DATE: 12/12/13
 200.0 FT. — HORIZ. SCALE
 30.0 FT. — VERT. SCALE

THIS DOCUMENT (IFC REV 0) WAS
 ORIGINALLY ISSUED AND SEALED BY MARK
 WOLCOTT, REGISTRATION NUMBER
 PE-7303 ON 10/31/13 AND THE ORIGINAL
 DOCUMENTS ARE STORED AT MINNESOTA
 POWER, TSE DEPT. (30 W. SUPERIOR
 ST., DULUTH, MN).

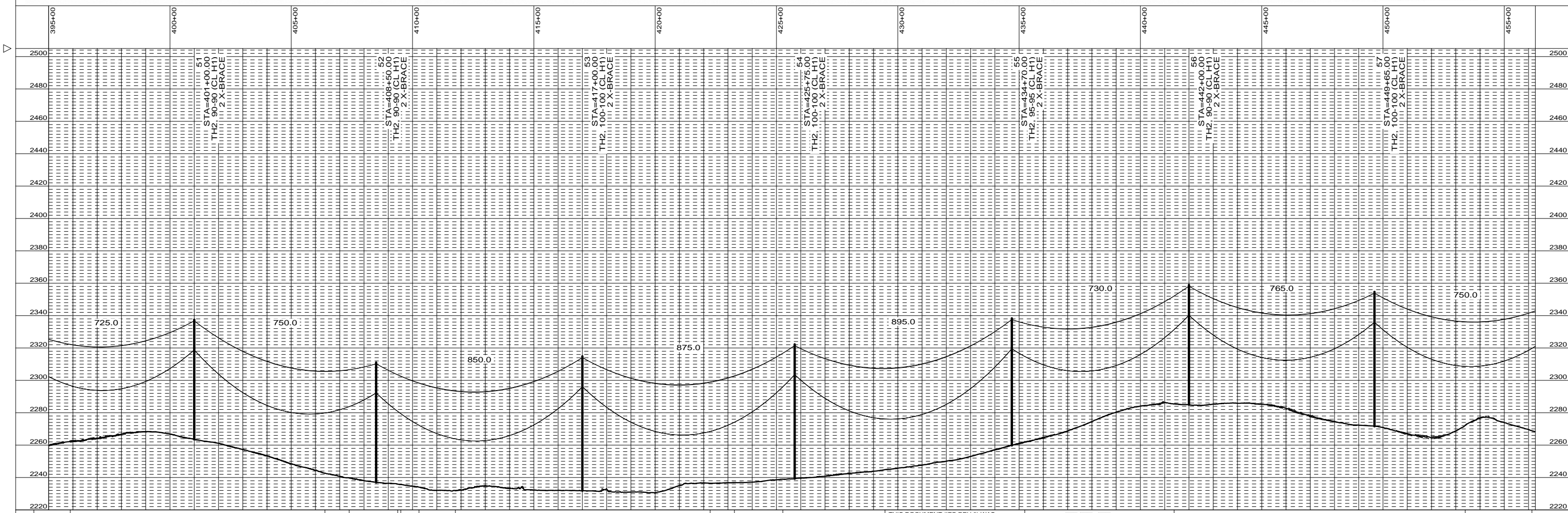
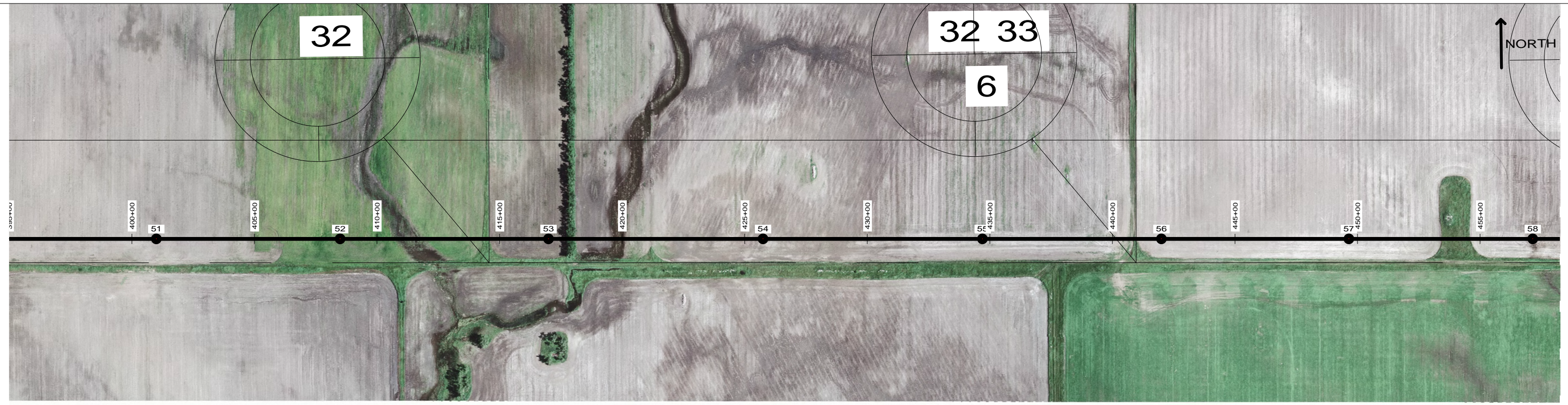


230 KV TRI-COUNTY - BISON
LINE NO. 103

SHEET 8 OF 12, REV. 2
MD +32899

FILE:

MICROFILMED	CODE
/ /	0142 2200 1140



NO.	DATE	REVISION DESCRIPTION	BY	APPROVED	NO.	DATE	REVISION DESCRIPTION	BY	APPROVED
A	02/17/12	ISSUED FOR PSC REVIEW	ARK	MJW	0	10/31/13	ISSUED FOR CONSTRUCTION	ARK	MJW
B	07/22/13	UPDATED STRUCTURE HEIGHTS	ARK	MJW	1	11/22/13	ALIGNMENT SHIFT STRUCTURES 1-14	ARK	MJW
C	09/25/13	ISSUED FOR BID	ARK	MJW	2	12/12/13	LOCATION CHANGE STRUCTURES 39-40	ARK	MJW

DRAWN: ARK
 CHECKED: MJW
 APPROVED: MJW
 DATE: 12/12/13
 200.0 FT. — HORIZ. SCALE
 30.0 FT. — VERT. SCALE

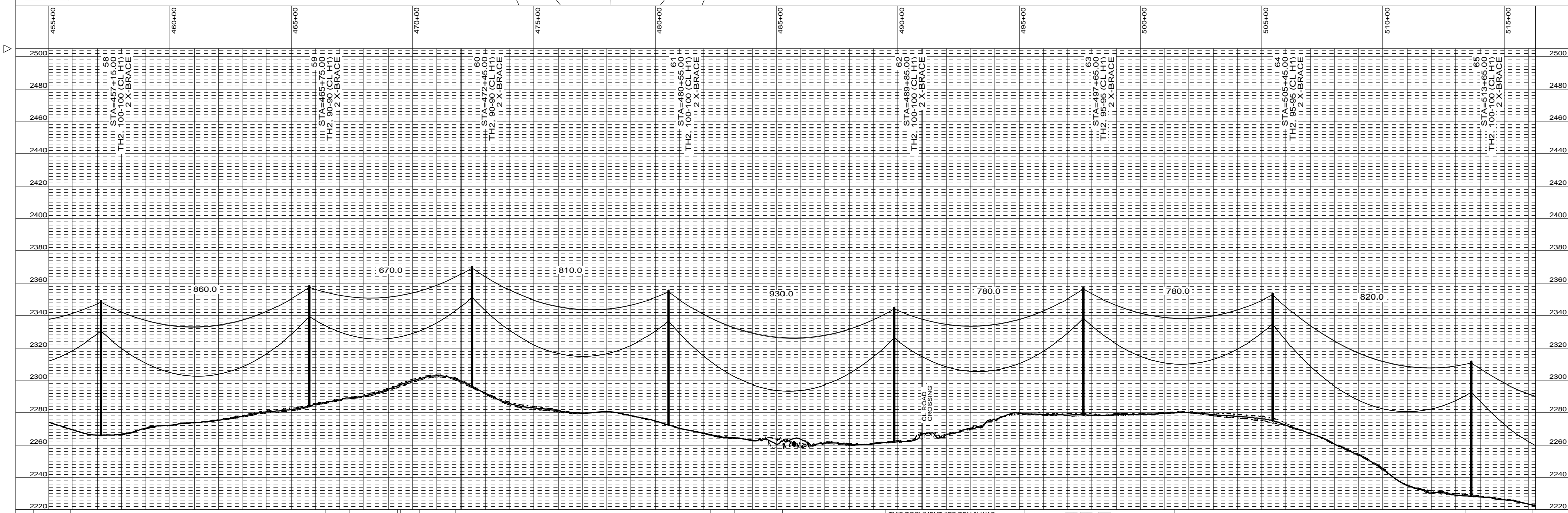
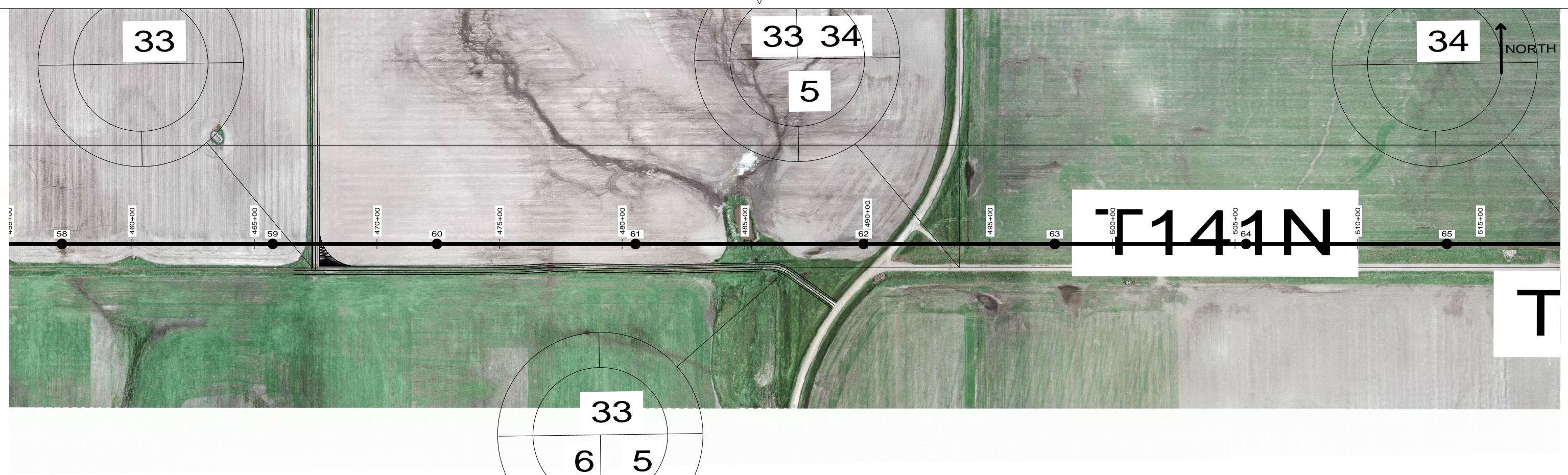
THIS DOCUMENT (IFC REV 0) WAS
 ORIGINALLY ISSUED AND SEALED BY MARK
 WOLCOTT, REGISTRATION NUMBER
 PE-7303 ON 10/31/13 AND THE ORIGINAL
 DOCUMENTS ARE STORED AT MINNESOTA
 POWER, TSE DEPT. (30 W. SUPERIOR
 ST., DULUTH, MN).



**230 KV TRI-COUNTY - BISON
LINE NO. 103**

MICROFILMED	CODE
/ /	0142 2200 1140

FILE:



NO.	DATE	REVISION DESCRIPTION	BY	APPROVED	NO.	DATE	REVISION DESCRIPTION	BY	APPROVED
A	02/17/12	ISSUED FOR PSC REVIEW	ARK	MJW	0	10/31/13	ISSUED FOR CONSTRUCTION	ARK	MJW
B	07/22/13	UPDATED STRUCTURE HEIGHTS	ARK	MJW	1	11/22/13	ALIGNMENT SHIFT STRUCTURES 1-14	ARK	MJW
C	09/25/13	ISSUED FOR BID	ARK	MJW	2	12/12/13	LOCATION CHANGE STRUCTURES 39-40	ARK	MJW

DRAWN: ARK
 CHECKED: MJW
 APPROVED: MJW
 DATE: 12/12/13

THIS DOCUMENT (IFC REV 0) WAS
 ORIGINALLY ISSUED AND SEALED BY MARK
 WOLCOTT, REGISTRATION NUMBER
 PE-7303 ON 10/31/13 AND THE ORIGINAL
 DOCUMENTS ARE STORED AT MINNESOTA
 POWER, TSE DEPT. (30 W. SUPERIOR
 ST., DULUTH, MN).

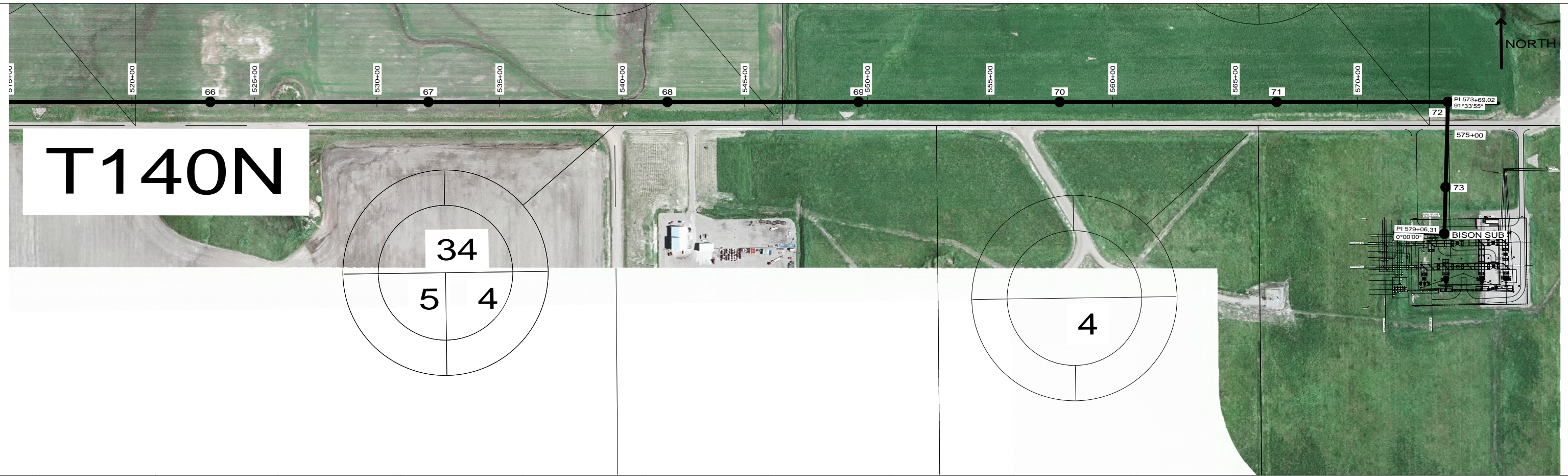


**230 KV TRI-COUNTY - BISON
 LINE NO. 103**

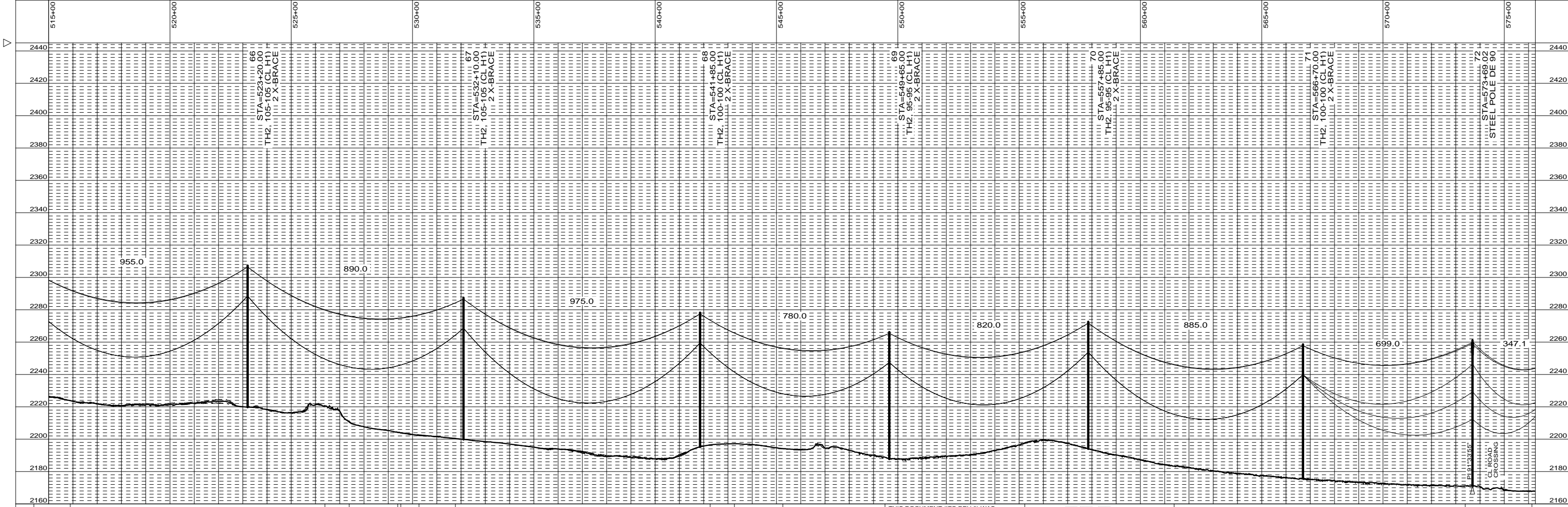
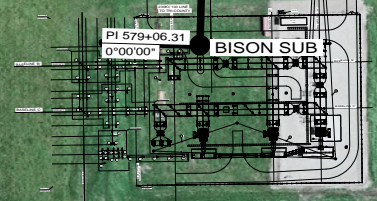
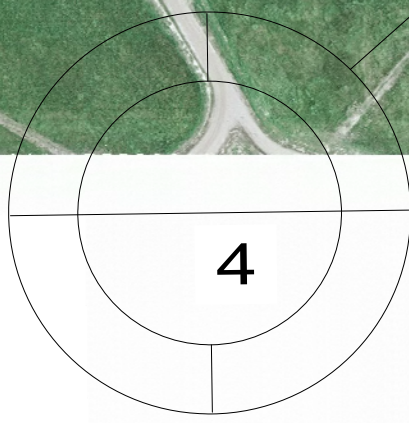
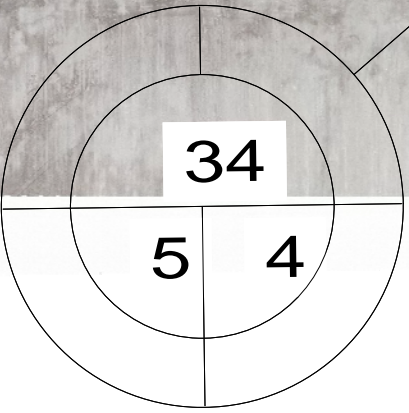
SHEET 10 OF 12, REV. 2
MD +32899

FILE:

MICROFILMED	CODE
/ /	0142 2200 1140



T140N



NO.	DATE	REVISION DESCRIPTION	BY	APPROVED	NO.	DATE	REVISION DESCRIPTION	BY	APPROVED
A	02/17/12	ISSUED FOR PSC REVIEW	ARK	MJW	0	10/31/13	ISSUED FOR CONSTRUCTION	ARK	MJW
B	07/22/13	UPDATED STRUCTURE HEIGHTS	ARK	MJW	1	11/22/13	ALIGNMENT SHIFT STRUCTURES 1-14	ARK	MJW
C	09/25/13	ISSUED FOR BID	ARK	MJW	2	12/12/13	LOCATION CHANGE STRUCTURES 39-40	ARK	MJW

DRAWN: ARK
 CHECKED: MJW
 APPROVED: MJW
 DATE: 12/12/13

THIS DOCUMENT (IFC REV 0) WAS
 ORIGINALLY ISSUED AND SEALED BY MARK
 WOLCOTT, REGISTRATION NUMBER
 PE-7303 ON 10/31/13 AND THE ORIGINAL
 DOCUMENTS ARE STORED AT MINNESOTA
 POWER, TSE DEPT. (30 W. SUPERIOR
 ST., DULUTH, MN).



230 KV TRI-COUNTY - BISON
 LINE NO. 103

SHEET 11 OF 12, REV. 2
 MD +32899

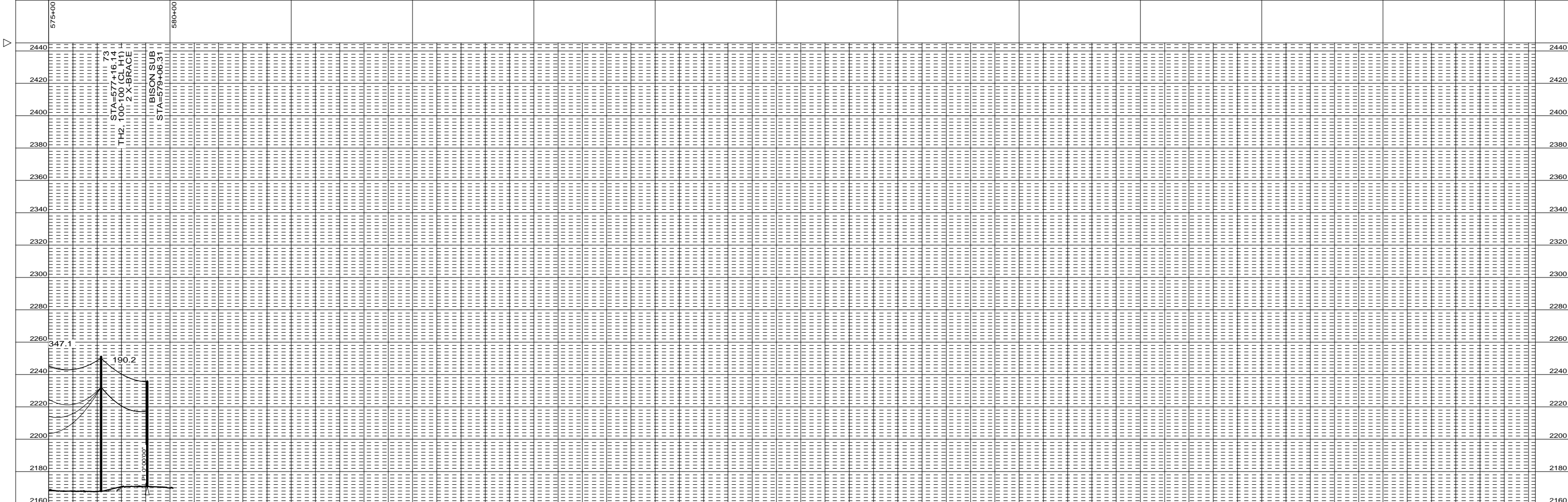
FILE:

MICROFILMED	CODE
/ /	0142 2200 1140



SECTION 4

40N - R86W



NO.	DATE	REVISION DESCRIPTION	BY	APPROVED	NO.	DATE	REVISION DESCRIPTION	BY	APPROVED
A	02/17/12	ISSUED FOR PSC REVIEW	ARK	MJW	0	10/31/13	ISSUED FOR CONSTRUCTION	ARK	MJW
B	07/22/13	UPDATED STRUCTURE HEIGHTS	ARK	MJW	1	11/22/13	ALIGNMENT SHIFT STRUCTURES 1-14	ARK	MJW
C	09/25/13	ISSUED FOR BID	ARK	MJW	2	12/12/13	LOCATION CHANGE STRUCTURES 39-40	ARK	MJW

DRAWN: ARK
 CHECKED: MJW
 APPROVED: MJW
 DATE: 12/12/13

THIS DOCUMENT (IFC REV 0) WAS
 ORIGINALLY ISSUED AND SEALED BY MARK
 WOLCOTT, REGISTRATION NUMBER
 PE-7303 ON 10/31/13 AND THE ORIGINAL
 DOCUMENTS ARE STORED AT MINNESOTA
 POWER, TSE DEPT. (30 W. SUPERIOR
 ST., DULUTH, MN).



**230 KV TRI-COUNTY - BISON
 LINE NO. 103**

SHEET 12 OF 12, REV. 2
MD +32899

FILE:

MICROFILMED	CODE
/ /	0142 2200 1140