

88 MW Simple Cycle Combustion Turbine - Application for Certificate of Site Compatibility

PU-11-631

Gas Supply/Pipeline Overview

Bob Morman- Director of Gas Supply



26

PU-11-631
Exhibit MDU-4

Filed: 12/4/2012

Pages: 3

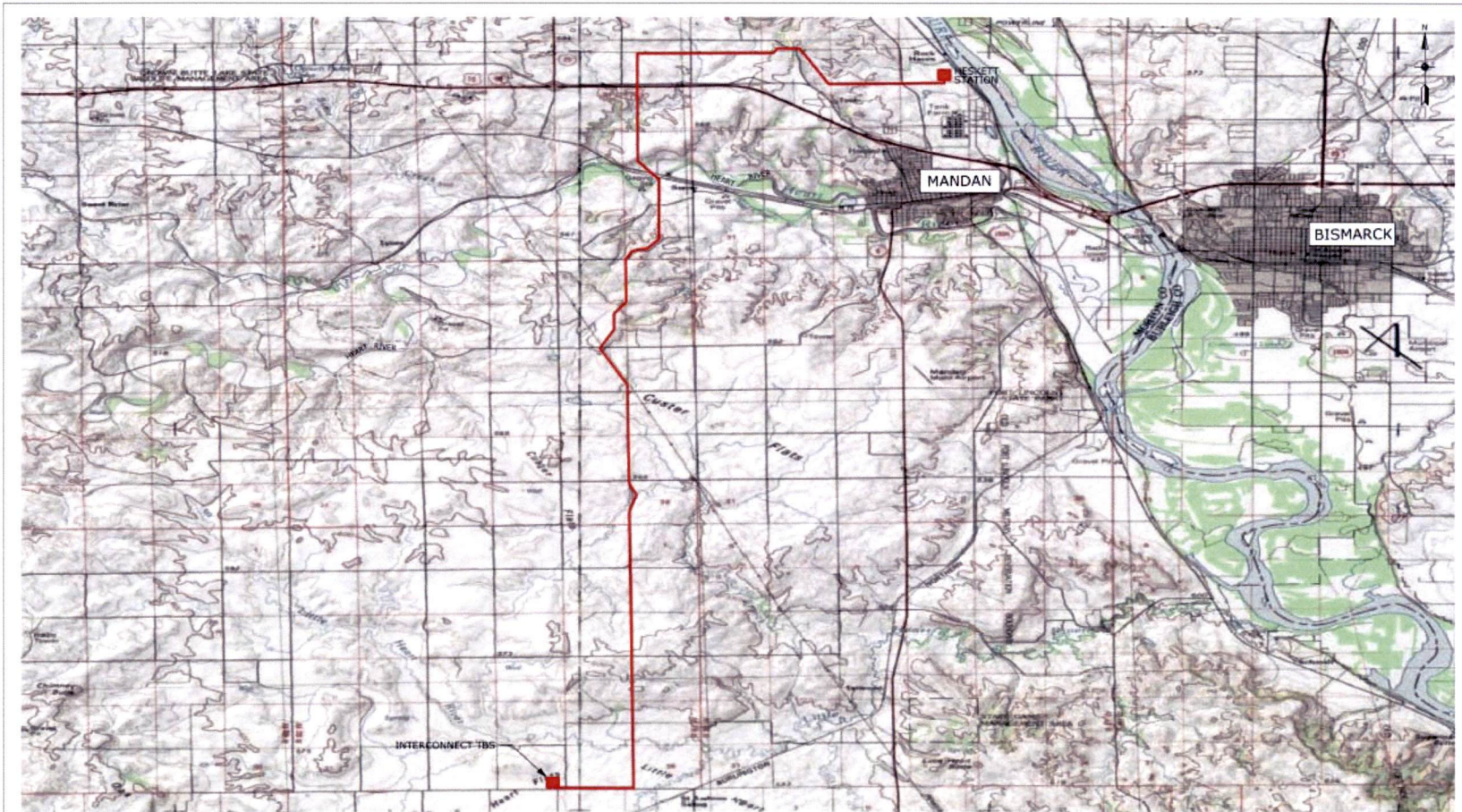
Montana-Dakota Utilities Co., a Division of MDU Resources Group, Inc.

Exhibit MDU-4

88 MW Combustion Turbine Gas Supply

- Montana-Dakota will construct a 24 mile pipeline from a new interconnect with Northern Border Pipeline near St. Anthony, ND.
- RFP's were sent out to potential pipelines to serve the demand of the Heskett Station
- Montana-Dakota is negotiating for services with a large marketer to provide 'standby' firm service gas supply and firm upstream transportation

88 MW Combustion Turbine Potential Gas Pipeline Route



Montana-Dakota Utilities Co.
Heskett Station
Natural Gas Pipeline Project

MONTANA-DAKOTA
UTILITIES CO.
A Division of MDU Resources Group, Inc.
In the Community, We Serve!

ProSource

EXHIBIT 2 OF 2