



**PROJECT DETAILS AND PROGRESS:**

**Contract 140094 – Site Preparation, Service Building, Foundations, and Underground Installations**

- Erected steel, installed base flashing, inside corner trim, wall sheeting and framed for doors and windows for Service Building
- Installed grounding connections to Service Building columns
- Installed electrical service connections and framing for Service Building
- Placed concrete, removed forms, and installed plates for Service Building pipe access vault curbs
- Set bolts, placed 120 yards of concrete, and removed forms for acoustic barrier footer foundation
- Tied rebar, formed, and placed 40 yards of concrete for acoustic barrier wall foundation
- Formed, set bolts, placed 15 yards of concrete and removed forms at the CT fuel gas foundation
- Installed remainder of 2" fuel gas line to near stub-up near gas house and backfilled
- Placed concrete and removed forms for closed cooling water curb
- Backfilled between turbine and closed cooling water foundations
- Installed 24" RCP to Area Inlet 7 from Area Inlet 8, installed 18" RCP to Area Inlet 8A and set structure, and backfilled
- Excavated water wash skid foundation and placed flowable fill
- Backfilled around exhaust system foundation
- Formed and tied rebar for 115kV circuit breaker foundation
- Installed conduit stub-ups and duct bank east out of 115kV circuit breaker foundation
- Drilled 115kV A-frame, access stairs, and pipe support piers and placed concrete for 4 stairs piers
- Placed 40 yards of concrete on duct bank toward plant, out of UAT, between the turbine and PEECC, and between EMH-5 and PEECC and backfilled
- Removed forms for PEECC hatch and inside walls
- Installed duct bank north out of EMH-2 and to Pull Vault 2 and to gas coalescing filter with stub-ups
- Removed grout pocket forms and bush hammered pockets for turbine and generator bolts
- Formed, tied rebar, and installed bolts for inlet air foundation
- Installed connection of remainder 6" wastewater force main and backfilled
- Excavated gas coalescing filter foundation
- Drilled holes for light pole bases at gas yard
- Accepted delivery of RCP, stormwater area inlets, and PEECC hatch

**Contract 140095 – Mechanical and Electrical Installation**

- Mobilized Connex box and tool trailer and organized tools
- Installed trailer power and internet
- Erected 3900 crawler crane
- Verified combustion turbine bolts and made small adjustments
- Cleaned and set fixators

**PROJECT OPEN ITEMS / CONCERNS:**

- None not already addressed
- Construction Equipment: 2 skid steers (CAT 247B, 262), back hoe (Deere 310G), trencher (Case 860), 2 forklifts (JLG 944E-42, CAT TH103), mini excavator (CAT 304CR), 30 ton rubber tire crane (Terex), 4 track hoes (CAT 320 CL, CAT 330 CL, CAT 345C, Deere 130G), sheep's foot roller (CAT CP-433C), front-end loader (CAT 950G), 40-ton crane, fork lift (JLG Skytrak)
- Visitors: Alan Welte (MDU), Kevin Magstadt (Wenck), Pete Thiessen (MDU)

Montana-Dakota Utilities Company  
R.M. Heskett Station Unit 3  
Project No. 11-0274-04



Stormwater structure installation (looking SW)

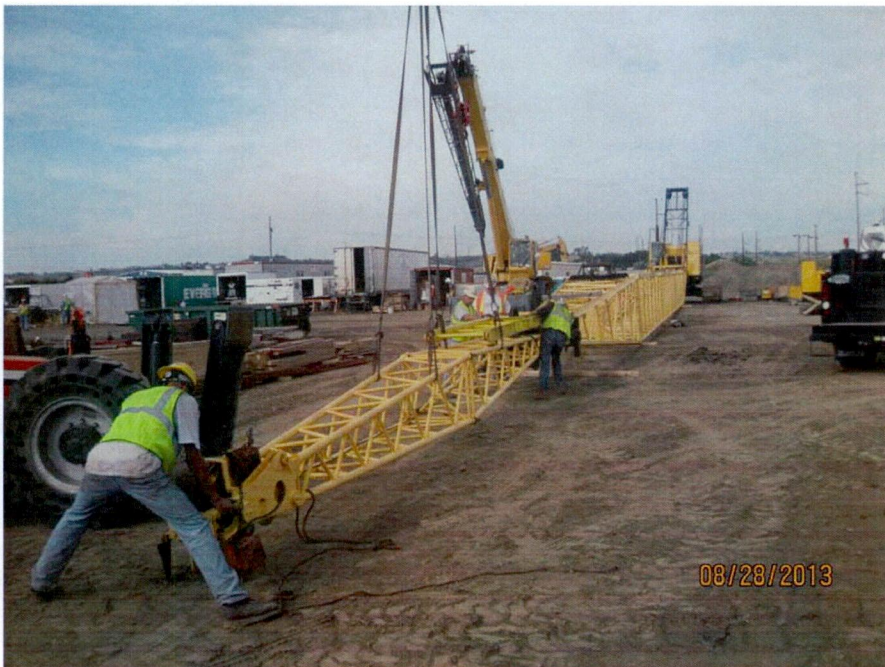


PEECC hatch concrete placement (looking SE)

Montana-Dakota Utilities Company  
R.M. Heskett Station Unit 3  
Project No. 11-0274-04



Service Building structural steel and door framing (looking E)



Crane erection (looking W)