



PROJECT DETAILS AND PROGRESS:

Contract 140095 – Mechanical and Electrical Installation

- Installed lifting beam steel and assembled hoists inside accessory enclosure
- Repaired exhaust blower instrumentation
- Installed piping brackets
- Installed enclosure door restraints
- Installed enclosure louver hood screens
- Completed punch list items and loaded tools and equipment

MDU/GE Check-out

- Continued ratcheting
- Attempted false fire and tripped successfully with gas present but torque converter did not engage
- Adjusted torque converter low level and high level speeds during false fire trials
- Reviewed “red flag” check list to provide “green light” for first fire
- Performed false fired successfully
- Performed turbine water wash
- Performed first fire successfully but did not reach full speed, no load
- Performed fire to full speed, no load – reached full speed but observed elevated vibration levels and stopped the test
- Performed visual inspection with scope of turbine and load compartments for evidence of damage from full speed, no load test
- Performed full speed, no load test to check vibration-readings showed two step changes
- Performed over speed test successfully and coasted down
- Performed full speed, no load test to check vibration-readings showed one small step change but generally smoother
- Performed full speed, no load field short circuit test on generator
- Performed full speed, no load open-circuit saturation test on generator
- Performed full speed, no load AVR step response on generator
- Performed full speed, no load manual excitation step response on generator

PROJECT OPEN ITEMS / CONCERNS:

- None not already discussed
- Construction Equipment: 40-ton rubber tire crane, 1 fork lift (JLG Skytrak),
- Visitors: Pete Thiessen (MDU)

Montana-Dakota Utilities Company
R.M. Heskett Station Unit 3
Project No. 11-0274-04

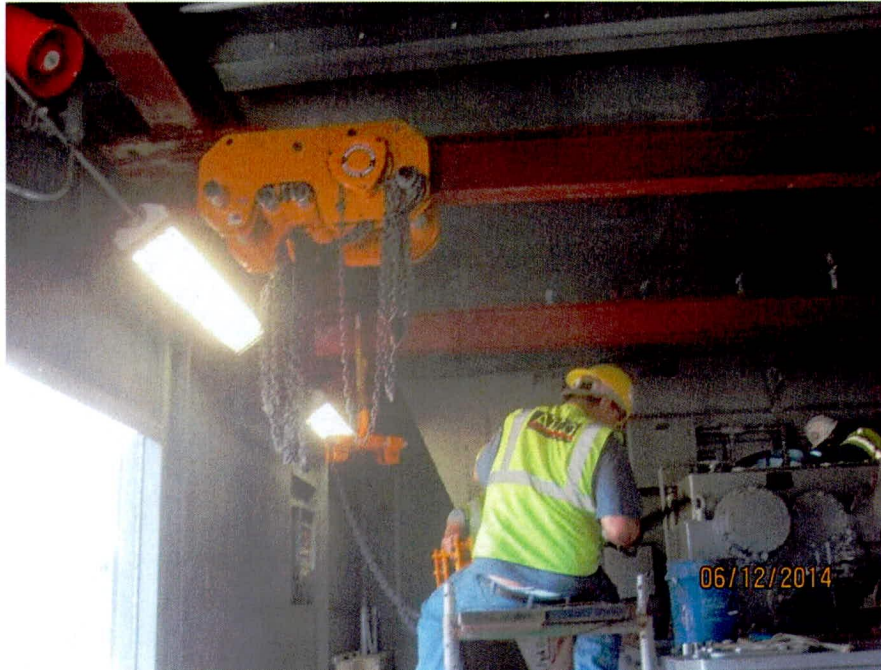


Accessory enclosure lifting beam installation (looking E)



Turbine water wash discharge (looking N)

Montana-Dakota Utilities Company
R.M. Heskett Station Unit 3
Project No. 11-0274-04



Accessory enclosure trolley installation (looking N)



Enclosure door restraint installation (looking N)