

**Wilton IV Wind Energy Center
Acoustic Assessment
Burleigh County, North Dakota**

October 2011

Prepared for



Prepared by



**TETRA TECH EC, INC.
160 Federal Street
Boston, MA 02110
617-443-7500**

TABLE OF CONTENTS

EXECUTIVE SUMMARY	ES-1
1.0 INTRODUCTION.....	1
1.1 PROJECT AREA.....	1
1.2 EXISTING ACOUSTIC ENVIRONMENT.....	3
1.3 ACOUSTIC TERMINOLOGY	3
2.0 NOISE REGULATIONS AND GUIDELINES	8
2.1 ENVIRONMENTAL PROTECTION AGENCY ENVIRONMENTAL NOISE GUIDELINES	8
2.2 OCCUPATIONAL SAFETY AND HEALTH ADMINISTRATION NOISE SAFETY STANDARDS	9
2.3 SUMMARY OF ACOUSTIC CRITERIA.....	10
3.0 ACOUSTIC MODELING METHODOLOGY.....	11
3.1 ACOUSTIC MODELING SOFTWARE AND CALCULATION METHODS	11
3.2 ACOUSTIC MODELING INPUT PARAMETERS	12
4.0 PROJECT OPERATING NOISE LEVELS.....	14
4.1 RESULTS	14
5.0 OTHER SOUND CONSIDERATIONS	22
5.1 CUMULATIVE EFFECTS	23
5.2 ELECTRICAL SUBSTATION.....	34
5.3 CONSTRUCTION NOISE.....	35
6.0 CONCLUSIONS.....	38
7.0 TECHNICAL REFERENCES	39

TABLES

Table 1 Various Outdoor Sound Pressure (L_p) Levels.....	6
Table 2 Acoustic Terms and Definitions	7
Table 3 Summary of EPA Cause and Effect Noise Levels	8
Table 4 OSHA Permissible Daily Noise Exposure Limits	9
Table 5 Broadband Sound Power Levels (dBA) Correlated with Wind Speed	13
Table 6 GE 1.6 MW xle Sound Power Level by Octave Band Center Frequency	13
Table 7 Summary of Acoustic Modeling Results	14
Table 8 Broadband Sound Power Levels (dBA) Correlated with Wind Speed	23
Table 9 GE 1.5 MW sle Sound Power Level by Octave Band Center Frequency	23
Table 10 Broadband Sound Power Levels (dBA) Correlated with Wind Speed	24
Table 11 GE 1.5 MW xle Sound Power Level by Octave Band Center Frequency	24
Table 12 Summary of Acoustic Modeling Results	25
Table 13 Transformer Sound Power Level (NEMA 83 dBA)	35
Table 14 Estimated L_{max} Sound Pressure Levels from Construction Equipment.....	36

FIGURES

Figure 1 Project Layout 2

Figure 2 Received Sound Levels - Wind Turbines at Cut-in Rotation 19

Figure 3 Received Sound Levels - Wind Turbines at Maximum Rotation..... 20

Figure 4 Received Sound Levels - Wind Turbines at Maximum Rotation, Anomalous
Meteorological Conditions 21

Figure 5 Crofte Township - Received Sound Levels - Wind Turbines at Maximum Rotation,
Anomalous Meteorological Conditions..... 22

Figure 6 Cumulative Effects - Received Sound Levels: Wind Turbines at Cut-In Wind Speed" 31

Figure 7 Cumulative Effects - Received Sound Levels: Wind Turbines at Maximum
Rotational Wind Speed..... 32

Figure 8 Cumulative Effects - Received Sound Levels: Wind Turbines at Maximum
Rotational Wind Speed, Anomalous Meteorological Conditions 33

ACRONYMS AND ABBREVIATIONS

AGL	above ground level
Applicant	NextEra Energy Resources, LLC
BIL	basic impulse level
BLM	Bureau of Land Management
CadnaA	Computer-Aided Noise Abatement Program
dB	decibel
dba	A-weighted decibel
dB	unweighted decibel
EPA	U.S. Environmental Protection Agency
GIS	Geographic Information System
GE	General Electric
Hz	Hertz
HPD	hearing protection devices
IEC	International Electrotechnical Commission
ISO	Organization for International Standardization
kHz	kilohertz
kV	kilovolt
L _{dn}	day-night averaged sound level
L _{eq}	equivalent sound level
LFN	low frequency noise
L _{max}	maximum sound level
L _p	sound pressure level
L _w	sound power level
m/s	meters per second
mph	miles per hour
MVA	megavolt amperes
MW	megawatt
NEMA	National Electrical Manufacturers Association
OSHA	Occupational Safety and Health Administration
PEIS	Programmatic Environmental Impact Statement
Project	Wilton IV Wind Energy Center
pW	picowatt
Tetra Tech	Tetra Tech EC, Inc.
μPa	microPascal
USGS	United States Geological Survey
UTM	Universal Transverse Mercator
W	watt
WTG	wind turbine generator

EXECUTIVE SUMMARY

Tetra Tech EC, Inc. (Tetra Tech) has completed an acoustic assessment for the proposed Wilton IV Wind Energy Center (Project) located in Burleigh County, North Dakota. A screening-level analysis was completed to evaluate expected sound levels resulting from wind turbine generator (WTG) operations as well sound from the electrical substation. The overall objectives of this study were to: (1) determine Project sound sources and site-specific sound propagation characteristics incorporating terrain effects; (2) computer simulate sound levels using internationally accepted calculation standards; and (3) determine the feasibility of the Project to operate in compliance with applicable noise standards and guidelines. The study also included assessment of noise generated during Project construction and maintenance activities and a review of cumulative sound impacts in conjunction with existing and reasonably foreseeable future development.

Wind turbine sound source data was obtained from General Electric (GE), the manufacturer of the GE 1.6 megawatt (MW) xle wind turbine model. Sound propagation modeling was conducted using the Computer-Aided Noise Abatement (CadnaA) program (version 4.1.137), a comprehensive 3-dimensional acoustic modeling computer simulation software specifically developed for the power generation industry, with calculations made in accordance with the Organization for International Standardization (ISO) 9613-2 “Attenuation of Sound during Propagation Outdoors”. The industry standard CadnaA acoustic modeling software is widely used by sound engineers due to its adaptability to describe complex acoustic scenarios. The results of the acoustic modeling were compared to relevant standards including the U.S. Environmental Protection Agency (EPA) environmental noise guidelines, Occupational Safety and Health Administration (OSHA) regulatory limits for worker exposure and public safety, and the Crofte Township noise ordinance.

Acoustic modeling results demonstrate that the Project has been adequately designed to operate in compliance with levels recommended by the EPA guidelines at all existing inhabited structures considered to be noise sensitive receptors. The acoustic modeling incorporated a number of conservative model input assumptions to ensure that the project impacts were not underestimated. The Project will also be constructed and operated in adherence with the Crofte Township noise ordinance and all applicable OSHA Regulation noise safety standards. Operation of the Project may result in periodically audible sound at noise sensitive receptors under certain operational and meteorological conditions. Specifically, the Project will be audible at the closest receivers relative to the Project, when background sound levels are low, and wind speeds high enough for WTG operation. Residents outside their houses with a direct line of sight to an operating WTG may hear a gentle swooshing sound characteristic of wind energy projects. During meteorological conditions favorable to sound propagation and very quiet background ambient sound conditions, WTGs may be periodically audible at more distant locations. Conversely, at times the Project may be partially or fully masked by elevated ambient sound levels generated by the increased wind speed.

Individual response to low level WTG sound is largely subjective and therefore not easily predictable and may depend on several technical and non-technical factors, including predetermined perceptions of the proposed Project and wind energy in general, individual and community economic incentives, existing background sound levels, and/or the proximity of the listener to a single or grouping of WTGs. However, sound from the Project when audible will likely not be deemed excessive or unusually loud at the proposed setback distances and will be consistent with sound generated at similar wind energy projects successfully sited throughout the state of North Dakota employing similar noise criteria and WTG setback distances. The Wilton IV Wind Energy Center is expected to generate sound levels that will be below recommended limits and is therefore not expected to present an adverse noise impact with respect to public welfare, health and safety.

1.0 INTRODUCTION

Wilton Wind IV, LLC (Wilton IV) proposes to construct and operate a wind energy facility in Burleigh County, North Dakota, referred to as the Wilton IV Wind Energy Center (the Project). The Project consists of a total of 62 GE 1.6 megawatt (MW) xle wind turbine generators (WTGs) with a rotor diameter of 270 feet (82.5 meters) and an effective hub height of 262.5 feet (80 meters) above grade. The Project infrastructure also includes a collection electric substation, enabling the interconnection to the Central Electric Power Cooperative 230-kV transmission line and ultimately the Western Area Power Administration's transmission system. The acoustic assessment analyzed the total potential Project power production output including 62 WTGs (99 MW) plus the two alternate WTGs. Further analysis was conducted to examine the cumulative assessment of sound resulting from the Project in conjunction with the adjacent Wilton I, Wilton II, and Baldwin Wind Energy Centers, which are all currently operational.

Tetra Tech EC, Inc. (Tetra Tech) was retained to perform the acoustic assessment including analysis of expected future sound levels resulting from operation of all Project components at existing noise sensitive receptors (i.e., residences). The operational acoustic analysis was used to determine the feasibility of the Project to operate in compliance with the applicable noise standards and guidelines. This document presents the findings of the Wilton IV Energy Center acoustic assessment.

1.1 Project Area

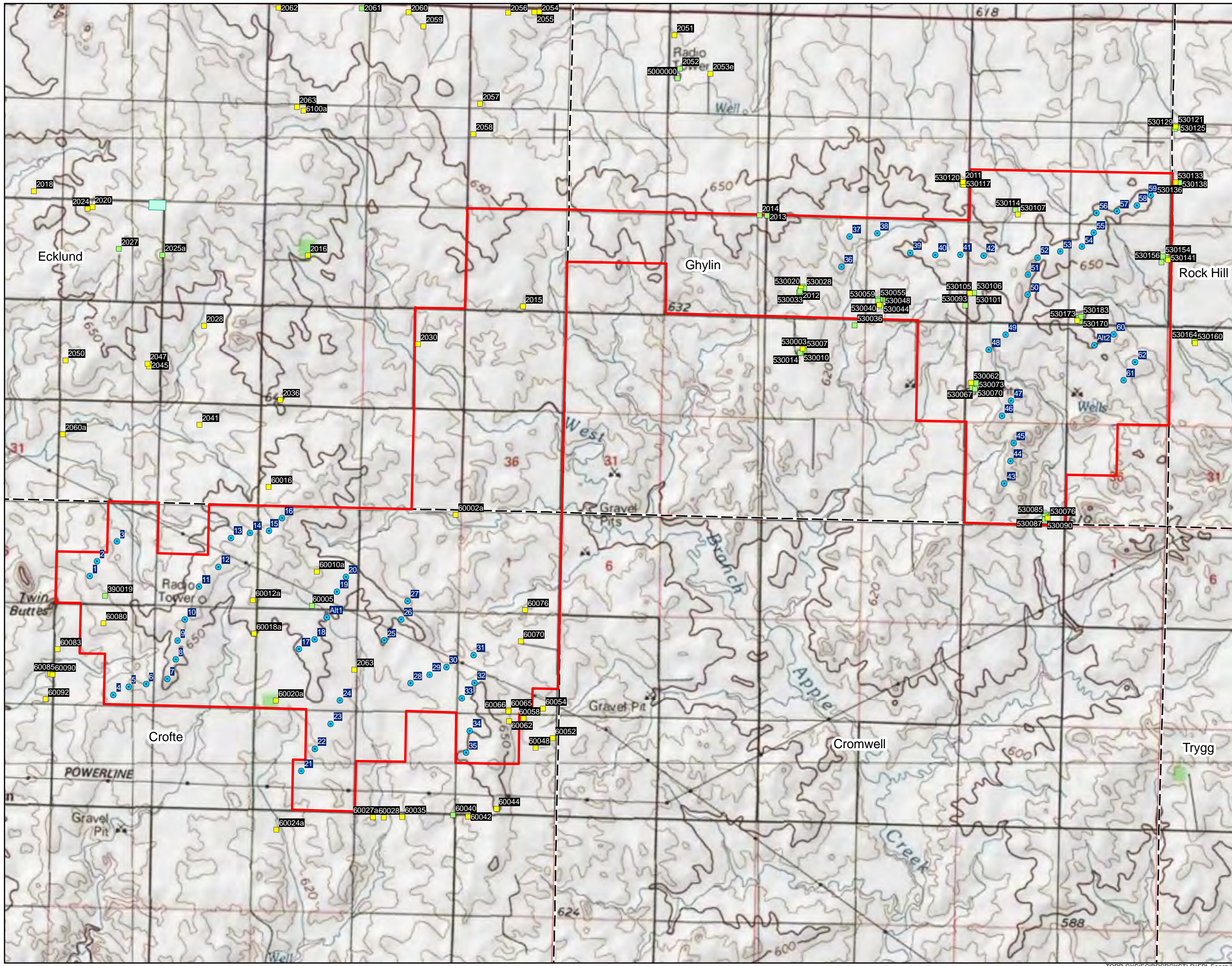
The Wilton IV Project Area consists of approximately 15,752 acres (24.6 square miles) of land southeast of Wilton, North Dakota. The Project Area corresponds to the Project Boundary shown in Figure 1 and is located on privately owned lands in Burleigh County, central North Dakota within the Townships of Crofte, Ghylin, and Ecklund; however, the proposed 62 WTG locations and 2 alternate WTG locations are on privately owned lands within only Crofte and Ghylin Townships. The landscape includes the western mixed-grass prairie, short-grass prairie, and associated wetlands of the Missouri Slope and River Breaks regions. This semiarid region of North Dakota has topography that can be described as level to rolling plains with isolated sandstone buttes or badlands formations. Native grasslands persist in areas of steep or broken topography, but they have been largely replaced by spring and winter wheat, barley, sunflowers, corn, alfalfa, interspersed with cattle grazing. Patches of trees and shrubs exist throughout the Project Area and are found primarily between agricultural fields, in drainages, and as shelter belts around homesteads.

Residences and abandoned farmsteads are widely scattered throughout the Wilton IV Project Area. A total of 84 receptor locations were identified based on the receptor information dated September 6, 2011 provided by Wilton IV. Of these 84 receptors identified, only 36 are existing occupied residences. Figure 1 presents the Wilton IV acoustic study area, the locations of the proposed WTGs and receptor locations, and the land status of the receptor locations incorporated in the acoustic assessment.

WILTON WIND IV, LLC
WILTON IV WIND ENERGY CENTER
BURLEIGH COUNTY, NORTH DAKOTA

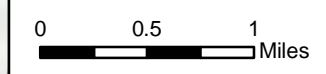
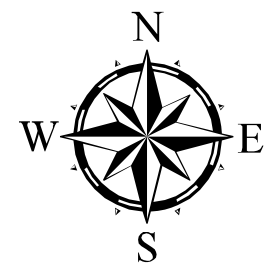
FIGURE 1
PROJECT LAYOUT

OCTOBER 2011



Legend

- Wilton IV WTG (GE 1.6 xle)
- Receptor - Occupied
- Receptor - Unoccupied
- Substation
- Project Boundary
- Civil Township



REFERENCE MAP



1.2 Existing Acoustic Environment

Burleigh County is generally characterized as a rural agricultural land use area. Existing ambient sound levels are expected to be relatively low, although sound levels may be sporadically elevated in localized areas due to roadway noise or periods of human activity. Background sound levels vary both spatially and temporally depending on proximity to area sound sources, roadways and natural sounds. Principal contributors to the existing acoustic environment include motor vehicle traffic, mobile farming equipment, farming activities such as plowing and irrigation, all-terrain vehicles, local roadways, periodic aircraft flyovers, and natural sounds such as birds, insects, and leaf or vegetation rustle during elevated wind conditions in areas with established tree stands or established crops. Diurnal effects result in sound levels that are typically quieter during the night than during the daytime, except during periods when evening and nighttime insect noise may dominate the soundscape, predominantly in the warmer seasons.

With the exception of the EPA environmental noise guidelines and the United States Occupational Health and Safety Administration's (OSHA) regulations that describe health and safety limits for noise exposure, there are no state, county, or federal noise requirements specific to this Project or wind energy facilities in the state of North Dakota. On the local level, Crofte Township has an ordinance that includes a numerical decibel limit of 45 dBA, which is absolute and not relative to the ambient acoustic environment. Additionally, due to the setbacks that Wilton IV has incorporated into the Project layout from noise sensitive receptors (i.e. residential uses)¹ and the largely rural surroundings, it was concluded that a baseline sound survey to further document the existing acoustic conditions was not necessary in order to perform an acoustic impact assessment and regulatory compliance determination.

1.3 Acoustic Terminology

Airborne sound is described as the rapid fluctuation or oscillation of air pressure above and below atmospheric pressure, creating a sound wave. Sound is characterized by properties of the sound waves, which are frequency, wavelength, period, amplitude, and velocity. Noise is further defined as unwanted sound and is measured in the same way. A sound source is defined by a sound power level (L_w), which is independent of any external factors. The acoustic sound power is the rate at which acoustical energy is radiated outward and is expressed in units of watts (W). Sound energy travels in the form of a wave, a rapid fluctuation or oscillation of air pressure above and below atmospheric pressure. A sound pressure level (L_p) is a measure of this fluctuation and can be directly determined with a microphone or calculated from information about the source sound power level and the surrounding environment through predictive acoustic modeling. While the sound power of a source is strictly a function of the total amount of acoustic energy being radiated by the source, the sound pressure levels produced by a source are a function of the distance from the source and the effective radiating area or physical size of the source. In general, the magnitude of a source's sound power level is always considerably higher than the observed sound pressure level near a source due to the fact that the acoustic energy is being radiated in various directions from the source.

Sound levels are presented on a logarithmic scale to account for the large pressure response range of the human ear, and are expressed in units of decibels (dB). A decibel is defined as the ratio between a

¹ Ghylin Township does not have established setbacks for wind turbines. Crofte Township has established setbacks of 1,400 feet from occupied residences on participating properties and 1,750 feet from occupied residences on non-participating properties. Wilton IV has utilized the Crofte Township setbacks in designing the turbine layout in this locality.

measured value and a reference value usually corresponding to the lower threshold of human hearing defined as 20 micropascals (μPa). Conversely, sound power is commonly referenced to 1 picowatt (pW), which is one trillionth of a watt. Broadband sound includes sound energy summed across the frequency spectrum. In addition to broadband sound pressure levels, analysis of the various frequency components of the sound spectrum is completed to determine tonal characteristics. The unit of frequency is Hertz (Hz), which corresponds to the rate in cycles per second that sound pressure waves are generated. Typically, a sound frequency analysis examines 11 octave (or 33 1/3 octave) bands ranging from 16 Hz (low) to 16,000 Hz (high). This range encompasses the entire human audible frequency range. Since the human ear does not perceive every frequency with equal loudness, spectrally varying sounds are often adjusted with a weighting filter. The A-weighted filter is applied to compensate for the frequency response of the human auditory system. Sound exposure in acoustic assessments are commonly measured and calculated as A-weighted decibels (dBA). Unweighted sound levels are referred to as linear. Linear decibels are used to determine a sound's tonality and to engineer solutions to reduce or control noise as techniques are different for low and high frequency noise. Sound levels that are linear are presented as dBL.

An inherent property of the logarithmic decibel scale is that the sound pressure levels of two separate sources are not directly additive. For example, if a sound of 50 dBA is added to another sound of 50 dBA, the result is a 3-decibel increase (or 53 dBA), not an arithmetic doubling to 100 dBA. With respect to how the human ear perceives changes in sound pressure level relative to changes in "loudness", scientific research demonstrates that the following general relationships hold between sound level and human perception for two sound levels with the same or very similar frequency characteristics:

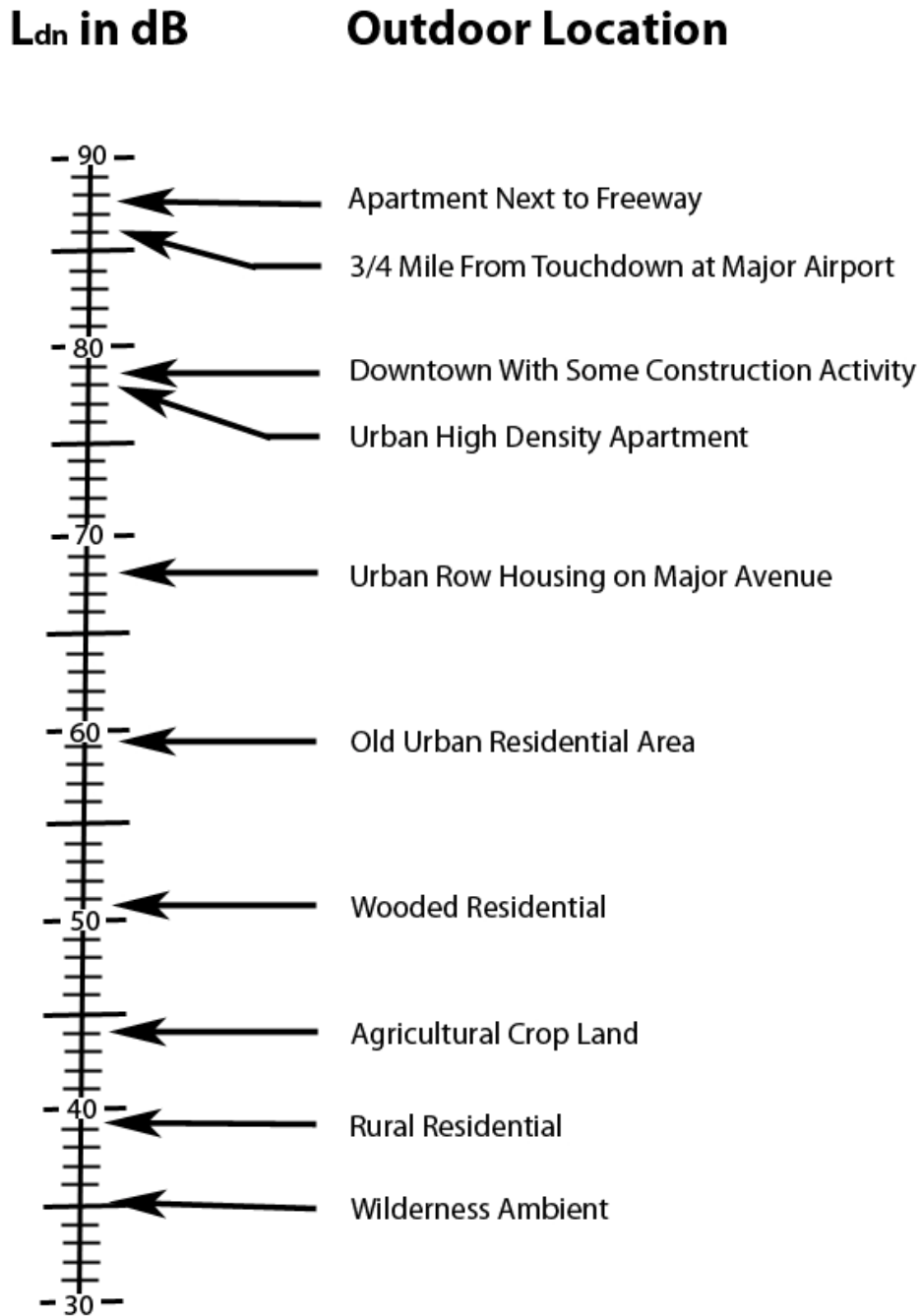
- 1 dBA is the practical limit of accuracy for sound measurement systems and corresponds to an approximate 10 percent variation in the sound pressure level. A 1 dBA increase or decrease is a non-perceptible change in sound.
- 3 dBA increase or decrease is a doubling (or halving) of acoustic pressure level and it corresponds to the threshold of change in loudness perceptible in a laboratory environment. In practice, the average person is not able to distinguish a 3 dBA difference in environmental sound outdoors.
- 5 dBA increase or decrease is described as a perceptible change in sound level and is a discernible change in an outdoor environment.
- 10 dBA increase or decrease is a tenfold increase or decrease in acoustic pressure level but is perceived as a doubling or halving in loudness (i.e., the average person will judge a 10 dBA change in sound level to be twice or half as loud).

While the concept of sound is defined by the laws of physics, the term "noise" has further qualities of being excessive or loud. The perception of sound as noise is influenced by technical factors as intensity, sound quality, tonality, duration, and the existing background levels. The effects of noise on people can be classified into three general categories: (1) subjective responses such as annoyance, nuisance, and dissatisfaction; (2) activity interference, e.g., speech, sleep, and learning; and (3) physiological effects such as startling or hearing loss. According to the United States Department of the Interior Bureau of Land Management (BLM), "Final Programmatic Environmental Impact Statement on Wind Energy Development on BLM-Administered Lands in the Western United States," the sound levels associated

with environmental noise (to the extent that any adverse impacts are produced) have been found to generally produce effects limited to the first two categories, only. At typical wind turbine setback distances, the comparatively low level sound generated by wind farms is expected to cause no discernible impact or fall principally within the subjective response category.

Sound can be measured, calculated, and presented in various formats, with a common metric being the equivalent sound level (L_{eq}). The equivalent sound level has been shown to provide both an effective and uniform method for comparing time-varying sound levels and is widely used in environmental acoustic assessments. The L_{eq} is often further defined by the time period (T) it is measured over $L_{eq(T)}$, for instance $L_{eq,24}$ would indicate the equivalent sound level over a 24-hour period. Community sound levels are also often described in terms of the day-night averaged sound level (L_{dn}), which accounts for the increased potential for annoyance that comes with elevated sound levels at night. In addition, the maximum sound level (L_{max}) can be used to quantify the maximum instantaneous sound pressure level generated by a source. Estimates of noise sources and outdoor acoustic environments, and the comparison of relative loudness are presented in Table 1. Table 2 provides additional reference information on acoustic terminology.

Table 1 **Various Outdoor Sound Pressure (L_p) Levels**



Notes:

μ Pa - Micropascals describe sound pressure levels (force/area).

dB(A) - A-weighted decibels describe sound pressure on a logarithmic scale referenced to 20 μ Pa.

Reference: USEPA, Protective Noise Levels. Condensed Version of EPA Levels Document. Publication EPA-550/9-79-100, November 1978.

Table 2 Acoustic Terms and Definitions

Term	Definition
Noise	Unwanted sound dependent on level, character, frequency or pitch, time of day, and sensitivity and perception of the listener. This word adds the subjective response of humans to the physical phenomenon of sound. It is commonly used when negative effects on people are known to occur.
Sound Pressure Level (L _p)	Pressure fluctuations in a medium. Sound pressure is measured in decibels referenced to 20 micropascals, the approximate threshold of human perception to sound at 1000 Hz.
Sound Power Level (L _w)	The total acoustic power of a noise source measured in decibels referenced to picowatts (one trillionth of a watt). Equipment specifications are provided by equipment manufacturers as sound power as it is independent of the environment in which it is located. A sound level meter does not directly measure sound power.
Frequency (Hz)	The rate of oscillation of a sound, measured in units of Hertz (Hz) or kilohertz (kHz). One hundred Hz is a rate of one hundred times (or cycles) per second. The frequency of a sound is the property perceived as pitch. For comparative purposes, the lowest note on a full range piano is approximately 32 Hz and middle C is 261 Hz.
A-Weighted Decibel (dBA)	Environmental sound is typically composed of acoustic energy across all frequencies (Hz). To compensate for the auditory frequency response of the human ear, an A-weighting filter is commonly used for describing environmental sound levels. Sound levels that are A-weighted are presented as dBA in this report.
Propagation and Attenuation	Propagation is the decrease in amplitude of an acoustic signal due to geometric spreading losses with increased distance from the source. Additional sound attenuation factors include air absorption, terrain effects, sound interaction with the ground, diffraction of sound around objects and topographical features, foliage, and meteorological conditions including wind velocity, temperature, humidity and atmospheric conditions.
Octave Bands	The audible range of humans spans from 20 to 20,000 Hertz and is typically divided into octave band center frequencies (Hz) ranging from 31 to 8,000 Hz.
Broadband Sound	The audible range of humans spans from 20 to 20,000 Hz and is typically divided into center frequencies ranging from 31 to 8,000 Hz.
Masking	Interference in the perception of one sound by the presence of another sound. At elevated wind speeds, leaf rustle and noise made by the wind itself can mask wind turbine sound levels, which remain relatively constant.
Low Frequency Noise (LFN)	The frequency range of 20 to 200 Hz is typically defined as low frequency noise. Studies have shown that low frequency sound from modern wind turbines is generally below the threshold of human perception at standard setback distances.
Infrasound	The frequency range of infrasound is normally defined as below 20 Hz. Infrasound from wind turbines are significantly below recognized thresholds for both human perceptibility and standardized health.

Note: Compiled by Tetra Tech from multiple technical and engineering resources.

2.0 NOISE REGULATIONS AND GUIDELINES

This section presents information on the criteria used to evaluate the effects of noise from the Project. With the exception of the EPA environmental noise guidelines and the United States Occupational Health and Safety Administration's (OSHA) regulations that describe health and safety limits for noise exposure, there are no state, county, or federal noise requirements specific to this Project or wind energy facilities in the state of North Dakota. Burleigh County does not have an ordinance with numerical decibel limits; however Crofte Township has a local ordinance as described in Section 2.3.

2.1 Environmental Protection Agency Environmental Noise Guidelines

In 1974, the U.S. Environmental Protection Agency (EPA) published Information on Levels of Environmental Noise Requisite to Protect Public Health and Welfare with an Adequate Margin of Safety (EPA 1974). This report represents the only published study that includes a large database of community reaction to noise to which a proposed project can be readily compared. The EPA has developed widely accepted recommendations for long term exposure to environmental noise with the goal of protecting public health and safety. The publication evaluates the effects of environmental noise with respect to health and safety, and provides information for state and local governments to use in developing their own ambient noise standards. For outdoor residential areas and other locations in which quiet is a basis for use, the recommended EPA guideline is an L_{dn} of 55 dBA. The EPA also suggests an $L_{eq(24)}$ of 70 dBA (24-hour) limit to avoid adverse effects on public health and safety at publicly accessible property lines or extents of work areas where extended periods public exposure is possible. The EPA cause-and-effect criteria limits are summarized in Table 3.

Table 3 Summary of EPA Cause and Effect Noise Levels

Location	Level	Effect
All public accessible areas with prolonged exposure	70 dBA $L_{eq(24)}$	Safety
Outdoor at residential structure and other noise sensitive receptors where a large amount of time is spent	55 dBA L_{dn}	
Outdoor areas where limited amounts of time are spent, e.g., park areas, school yards, golf courses, etc.	55 dBA $L_{eq(24)}$	Protection against annoyance and activity interference
Indoor residential	45 dBA L_{dn}	
Indoor non-residential	55 dBA $L_{eq(24)}$	

USEPA (U.S. Environmental Protection Agency). 1974

The application of the EPA noise guidelines is a common assessment tool to help ensure adequate protection of human health and welfare. The EPA sound level guidelines state that the levels identified are sufficiently stringent to be protective of public health and welfare with an adequate margin of safety. The EPA sound level guidelines do not impose federal requirements on the appropriateness of noise environments, nor are they a source of instructions for solving local noise problems. They are best viewed as a technical aid for local decision makers who seek to consider scientific information about effects of noise on people, and to reconcile local economic and political realities with cost and technical feasibility. While the EPA criteria limits cannot be used to infer audibility thresholds, designing to meet EPA guidelines will result in adequately minimizing potential impacts on noise sensitive receptors. When projected sound impacts meet the EPA guidelines there is no evidence that the general population will be at risk to any identified health effects. In addition, designing to meet EPA guidelines will ensure that annoyance and activity interference will also be minimized. The EPA guidelines are not regulatory

limits but are intentionally conservative to protect sensitive populations with an adequate margin of safety.

2.2 Occupational Safety and Health Administration Noise Safety Standards

The Occupational Safety and Health Administration (OSHA) provides regulatory limits for worker and public safety exposure to high noise levels. The federal government has long recognized the potential hazards caused by noise to work health and safety. Onsite noise levels are regulated by the Occupational Safety and Health Act of 1970 (29 Code of Federal Regulations [CFR] 1910.95). This regulation establishes standards for permissible noise exposure in the workplace to guard against the risk of hearing loss.

Table 4 presents a sliding scale of permissible noise levels by duration of exposure. The exposure level is raised 5 dB for every halving of exposure duration. OSHA permits noise levels up to 90 dBA, over a time-weighted average eight-hour shift (TWA_{8-hr}), measured on the A-scale of a sound level meter set at slow response. If there are workers exposed to a TWA_{8-hr} above 85 dBA, then the regulations call for a worker hearing protection program that includes baseline and periodic hearing testing, availability of hearing protection devices, and training in hearing damage protection.

Table 4 OSHA Permissible Daily Noise Exposure Limits

Duration of Exposure Per Day (Hours)	Sound Level (dBA)
8	90
6	92
4	95
3	97
2	100
1 ½	102
1	105
½	110
¼ or less	115

When employees are subjected to noise exposures exceeding those shown in Table 4, feasible administrative or engineering controls must be identified and implemented to lower employee noise exposure. If administrative controls fail to reduce sound to these acceptable levels, personal protective equipment must be provided and used to reduce noise exposure. In compliance with OSHA, Project contractors will be required to provide construction workers with readily available OSHA-approved hearing protection devices and to identify high noise areas and activities where hearing protection is needed. Operational sound generated from the Project during normal operation will be below 85 dBA and the OSHA noise exposure limits, even immediately at the base of the tower structure.

2.3 Crofte Township Noise Ordinance

The southernmost portion of the Wilton IV Project lies within Crofte Township, which has a local ordinance that states the following:

“Sound. A sound study which includes modeling of sound levels of wind turbines within 100-feet of every occupied residence within 1-mile of a wind turbine shall be submitted with the application. Sound levels of wind turbines within 100-feet of any non-participating residence shall not exceed 45 dBA (L_{eq}). Construction noise or reasonable and necessary maintenance activities are allowed to exceed this sound limit except between the hours of 11 p.m. and 7 a.m. This sound standard does not apply to participating dwellings.”

Therefore, sound levels within 100-feet of all non-participating receptors located in Crofte Township were assessed against the 45 dBA limit.

2.4 Summary of Acoustic Criteria

A summary of the pertinent acoustic criteria used to assess sound levels at existing receptors during Project operation is provided below:

- EPA 70 dBA $L_{eq(24)}$ at publicly accessible project property lines or extents of work areas where extended public exposure is possible;
- EPA 55 dBA $L_{eq(24)}$ in outdoor areas where limited time is spent;
- 55 dBA $L_{dn(24)}$ outdoors at all residential receptor locations where extended periods of time are spent outdoors, residential structures and areas in close proximity to the residential structure, e.g., yards. Wind turbines operate intermittently depending on wind conditions at hub height. Assuming the wind turbine is operating as a continuous steady state sound source and is the dominant contributor of environmental sound level at the receiver location, the L_{dn} is approximately 6.4 dB above the measured L_{eq} . Consequently, an L_{dn} of 55 dBA corresponds to a maximum instantaneous L_{eq} of 48.6 dBA;
- Crofte Township 45 dBA (L_{eq}) limit applicable within 100-feet of any non-participating residence for residences located within the Township extents; and
- OSHA regulatory limits for the protection of worker exposure and public safety.

These noise limits identified are absolute and independent of the existing acoustic environment; therefore, a baseline sound survey is not required to assess conformity.

Designing the Project to meet EPA guidelines will result in adequately minimizing potential impacts on noise sensitive receptors. When projected sound impacts meet the EPA guidelines, there is no evidence that the general population will be at risk to any identified health effects. In addition, designing to meet EPA guidelines will ensure that annoyance and activity interference will also be adequately minimized. OSHA noise safety standards are mandatory requirements at all times.

3.0 ACOUSTIC MODELING METHODOLOGY

Sound generated by an operating WTG is comprised of both aerodynamic and mechanical sound with the dominant sound component from utility scale WTGs being largely aerodynamic. Aerodynamic sound refers to the sound produced from air flow and the interaction with the WTG tower structure and moving rotor blades. Mechanical sound is generated at the gearbox, generator, and cooling fan, and is radiated from the surfaces of the nacelle and machinery enclosure and by openings in the nacelle casing. Due to the improved design of WTG mechanical components and the use of improved noise damping materials within the nacelle, including elastomeric elements supporting the generator and gearbox, mechanical noise emissions have been minimized. The WTGs being considered for the Project are upwind variable speed-type WTG with an active yaw and pitch regulated with power/torque control capability. Sound reduction elements designed into the GE 1.6 xle include impact noise insulation of the gearbox and generator, sound reduced gearbox, sound reduced nacelle, and rotor blades designed to minimize noise generation.

Wind farms, in comparison to conventional energy projects, are somewhat unique in that the sound generated by each individual WTG will increase as the wind speed across the site increases. Wind turbine sound is negligible when the rotor is at rest, increases as the rotor tip speed increases, and is generally constant once rated power output and maximum rotational speed are achieved. Under maximum rotational wind speed the assumed maximum sound power level will be reached, generally occurring at approximately 7 to 9 meters per second [m/s] depending on WTG type and according to manufacturer specifications. It is important to recognize, as wind speeds increase, the background ambient sound level will likely increase as well, resulting in acoustic masking effects. The net result is that during periods of elevated wind when higher WTG sound emissions occur, the sound produced from a WTG operating at maximum rotational speed may well be largely or fully masked due to wind generated sound in foliage or vegetation. In practical terms, this means a nearby receptor would tend to hear leaves or vegetation rustling rather than wind turbine noise. This relationship is expected to further minimize the potential for any adverse noise effects of the Project. Conversely, acoustic masking effects may be limited during periods of unusually high wind shear or at receiver locations that are particularly sheltered from prevailing winds.

3.1 Acoustic Modeling Software and Calculation Methods

The operational acoustic assessment was performed using the Project WTG layout dated September 21, 2011, which consists of 62 proposed WTG locations and 2 alternate WTG locations. The acoustic modeling analysis employed the most recent version of DataKustic GmbH's CadnaA, the computer-aided noise abatement program (v 4.1.137). CadnaA is a comprehensive 3-dimensional acoustic software model that conforms to the Organization for International Standardization (ISO) standard ISO 9613-2 "Attenuation of Sound during Propagation Outdoors." The engineering methods specified in this standard consist of full (1/1) octave band algorithms that incorporate geometric spreading due to wave divergence, reflection from surfaces, atmospheric absorption, screening by topography and obstacles, ground effects, source directivity, heights of both sources and receptors, seasonal foliage effects, and meteorological conditions.

Topographical information was imported into the acoustic model using the official USGS digital elevation dataset to accurately represent terrain in three dimensions. Terrain conditions, vegetation type, ground cover, and the density and height of foliage can also influence the absorption that takes place

when sound waves travel over land. The ISO 9613-2 standard accounts for ground absorption rates by assigning a numerical coefficient of $G=0$ for acoustically hard, reflective surfaces and $G=1$ for absorptive surfaces and soft ground. If the ground is hard-packed dirt, typically found in industrial complexes, pavement, bare rock or for sound traveling over water, the absorption coefficient is defined as $G=0$ to account for reduced sound attenuation and higher reflectivity. In contrast, ground covered in vegetation, including suburban lawns, livestock and agricultural fields (both fallow with bare soil and planted with crops), will be acoustically absorptive and aid in sound attenuation, i.e., $G=1.0$. A mixed (semi-reflective) ground factor of $G=0.5$ was used in the acoustic modeling. In addition to geometrical divergence, attenuation factors include topographical features, terrain coverage, and/or other natural or anthropogenic obstacles that can affect sound attenuation and result in acoustical screening. Sound attenuation through foliage and diffraction around and over existing anthropogenic structures such as buildings were ignored under all acoustic modeling scenarios.

Sound attenuation by the atmosphere is not strongly dependent on temperature and humidity; however, the temperature of 10°C (50°F) and 70 percent relative humidity parameters were selected as reasonably representative of conditions favorable to sound propagation. Atmospheric absorption depends on temperature and humidity and is most important at higher frequencies. Over short distances, the effects of atmospheric absorption are minimal. The ISO 9613-2 standard calculates attenuation for meteorological conditions favorable to propagation, i.e., downwind sound propagation or what might occur typically during a moderate atmospheric ground level inversion, which is assumed to be regulatory worst case. Though a physical impracticality, the ISO 9613-2 standard simulates omnidirectional downwind propagation and worst-case WTG source directivity factors. For receivers located between discrete WTG locations or WTG groupings, the acoustic model may result in over-prediction. The acoustic modeling algorithms essentially assume laminar atmospheric conditions, in which neighboring layers of air do not mix. This conservative assumption does not take into consideration turbulent eddies and micrometeorological inhomogeneities that may form when winds change speed or direction, which can interfere with the sound wave propagation path and increase attenuation effects.

Conversely, there may be meteorological conditions from time to time that will aid in the long range propagation of sound. These anomalous meteorological conditions may include well-developed moderate ground-based temperature inversions, such as commonly occurs at nighttime and during early morning hours, and wind gradients which can bend sound downwards, which may occur at any time depending on weather conditions. Per ISO 9613-2, the effects of meteorological conditions on sound propagation are small for short distances, and also small for longer distances at greater source and receptor heights. Over extended distances when the influences of wind or temperature gradients are most prevalent, atmospheric effects may cause fluctuations in received sound levels, but will typically attenuate noise to levels below those predicted. Levels significantly above those predicted are defined as exceptional events under the ISO 9613-2 standard. Propagation for anomalous meteorological conditions are presented to show, that for comparatively short periods of time, received sound levels may be higher than the mean.

3.2 Acoustic Modeling Input Parameters

In order to assist project developers and acoustical engineers, wind turbine manufacturers report WTG sound power data at integer wind speeds referenced to the effective hub height, ranging from cut-in to full rated power per International Standard IEC 61400-11:2006 Wind Turbine Generator Systems – Part 11: Acoustic Noise Measurement Techniques. This internationally accepted International Electrotechnical Commission (IEC) standard was developed to ensure consistent and comparable sound emission data of

utility-scale WTGs between manufacturers. Table 5 presents a summary of sound power data during normal mode as opposed to noise restricted operation. Sound data is correlated by integer wind speeds, referenced at WTG hub height with a stated roughness length of 0.03 to 0.05 meters which is representative of level, grass covered terrain. The roughness length describes the vertical wind profile per IEC specification with a neutral atmosphere with the wind profile following a logarithmic curve. Wind profile refers to the increase in wind speed that normally occurs with height above the ground. Sound power data presented are inclusive of both mechanical and aerodynamic source components.

The specification for the GE 1.6 MW xle turbine model presents an expected warranty confidence interval of k=2 dB, which had been added to the nominal sound power level. This confidence interval incorporates the uncertainty in independent sound power level measurements conducted, the applied probability level and standard deviation for test measurement reproducibility, and product variability. It is expected that the WTG version installed will be similar to the sound data that was used in the acoustic modeling; however, it is possible that the warranty sound data could vary slightly.

Table 5 Broadband Sound Power Levels (dBA) Correlated with Wind Speed

10-meter AGL Wind Speed	WTG L _{max} Sound Power Level (L _w) at Reference Wind Speed						
	9 mph (4 m/s)	11.2 mph (5 m/s)	13.4 mph (6 m/s)	15.9 mph (7 m/s)	17.9 mph (8 m/s)	20.1 mph (9 m/s)	22.4 mph (10 m/s)
GE 1.6 MW xle	<96	<96	<99	<102	<104	≤106	≤106

Wind turbines can be somewhat directional, radiating more sound in some directions than others. The IEC test measurement protocol requires that sound measurements are made for the maximum downwind directional location when reporting apparent sound power levels. Thus it is assumed that WTG directivity and sound generating efficiencies are inherently incorporated in the sound source data and used in the acoustic model development. A summary of sound power data for the GE 1.6 MW xle by octave band center frequency is presented in Table 6 (spectral frequency data provided with stated intended use limited for informational purposes only).

Table 6 GE 1.6 MW xle Sound Power Level by Octave Band Center Frequency

Frequency (Hz)	Octave Band Sound Power Level (dB)								Broadband (dBA)
	63	125	250	500	1000	2000	4000	8000	
GE 1.6 MW xle	84.8	93.6	99.2	100.8	100.1	97.3	89.1	86.2	106.0

4.0 PROJECT OPERATING NOISE LEVELS

Operational broadband (dBA) sound pressure levels were calculated assuming that all wind turbines are operating continuously and concurrently at the maximum manufacturer-rated sound level at the given operational condition. The sound energy was then summed to determine the equivalent continuous A-weighted downwind sound pressure level at each model receptor.

4.1 Results

Acoustic modeling for the Project layout was completed for WTG cut-in and full rotational operating conditions, thereby describing sound pressure levels over the entire range of future Project operational conditions. Table 7 presents the results of the Wilton IV Wind Energy Center acoustic modeling analysis and includes the ID, status, Universal Transverse Mercator (UTM) coordinates, receptor status and the received sound levels. The receptor status is based on the receptor information dated September 6, 2011 provided by Wilton IV. Sound energy contribution from the Project substation was also included in the acoustic calculations. Results are presented to tenths of decibels for comparison with the EPA criterion level, which is given to one decimal place; however, the generally accepted level of accuracy for this calculation procedure is typically to the nearest whole decibel.

Sound contour plots displaying Project operational sound levels in color-coded isopleths are provided in Figures 2 through 5. Figure 2 shows the broadband (dBA) operational sound levels under low-level wind speeds sufficient for the WTGs to operate at initial cut-in rotational speeds. Figure 3 shows the broadband (dBA) operational sound levels at wind speeds sufficient to sustain WTG operation at maximum rotational speeds for moderate downwind propagation. Figure 4 shows the broadband (dBA) operational sound levels at wind speeds sufficient to sustain WTG operation at maximum rotational speeds under anomalous meteorological conditions. Figure 5 shows the same operational scenario as Figure 4 but focuses just on for those receptors located within Crofte Township. A 100-foot buffer is also included around the receptors in Figure 5, which corresponds to the Crofte 45 dBA limit, which is applicable 100 feet from all non-participating residences. Acoustic modeling was completed for all WTGs operating concurrently. The tabulated results and contour plots are independent of the existing acoustic environment, i.e. are representative of expected Project-generated sound levels only. Table 7 presents a summary of the WTG acoustic modeling output, which indicates that the received sound levels are all below the most stringent EPA guideline, except for at two receptors (noted in bold). Receptor ID 60005 may potentially exceed the EPA guideline at maximum rotational wind speed under moderate downwind and anomalous propagation conditions whereas receptor ID 60010a approaches a potential exceedance of this guideline under the anomalous meteorological scenario. However, both these receptors have been identified as vacant structures; therefore, they would not be considered noise sensitive. Figure 5 also shows that all non-participating receptors (i.e., receptors located outside of the Project boundary, are in compliance with the Crofte Township 45 dBA limit.

Table 7 Summary of Acoustic Modeling Results

Receptor ID	Receptor Status	UTM Coordinates (m)		Received Sound Levels (dBA)		
		Easting (X)	Northing (Y)	Cut-in Wind Speed	Maximum Wind Speed	Anomalous Meteorological Conditions
60005	Vacant	372824	5212709	41.4	51.4	51.7

Table 7 Summary of Acoustic Modeling Results

Receptor ID	Receptor Status	UTM Coordinates (m)		Received Sound Levels (dBA)		
		Easting (X)	Northing (Y)	Cut-in Wind Speed	Maximum Wind Speed	Anomalous Meteorological Conditions
60010a	Vacant	372900	5213255	38.0	48.0	48.6
530170	Vacant	385112	5217255	37.4	47.4	48.2
530167	Vacant	385105	5217281	37.0	47.0	47.9
530173	Occupied	385063	5217268	36.9	46.9	47.8
2063	Vacant	373499	5211685	36.8	46.8	47.7
530179	Vacant	385089	5217313	36.7	46.7	47.7
390019	Occupied	369513	5212867	37.2	47.2	47.6
530175	Vacant	385078	5217318	36.7	46.7	47.6
530183	Vacant	385122	5217332	36.6	46.6	47.5
530106	Vacant	383413	5217713	36.5	46.5	47.2
530101	Vacant	383401	5217704	36.4	46.4	47.2
530105	Occupied	383345	5217711	36.3	46.3	47.1
530073	Vacant	383446	5216269	35.9	45.9	46.6
530070	Vacant	383428	5216176	35.8	45.8	46.5
60012a	Vacant	371877	5212797	34.8	44.8	46.3
530093	Vacant	383271	5217511	35.2	45.2	46.2
530067	Vacant	383380	5216196	35.3	45.3	46.1
60018a	Occupied	371895	5212263	34.3	44.3	46.1
530133	Occupied	386633	5219482	35.3	45.3	45.8
530062	Occupied	383364	5216276	35.1	45.1	45.8
530107	Occupied	384110	5218969	34.6	44.6	45.8
60016	Occupied	372129	5214610	34.9	44.9	45.5
530114	Vacant	384071	5219042	33.9	43.9	45.3
60020a	Occupied	372243	5211194	33.5	43.5	45.3
60065	Occupied	375966	5211041	34.6	44.6	45.2
530136	Vacant	386682	5219476	34.6	44.6	45.2
530138	Vacant	386699	5219476	34.3	44.3	44.9
60062	Occupied	375973	5210859	34.2	44.2	44.7
60080	Occupied	369491	5212432	33.3	43.3	44.7
530154	Vacant	386429	5218300	32.5	42.5	44.1
530156	Vacant	386411	5218203	32.2	42.2	44.1
530152	Vacant	386487	5218266	32.0	42.0	43.8
530048	Vacant	381950	5217604	32.6	42.6	43.8
530049	Vacant	381924	5217605	32.6	42.6	43.8
530053	Vacant	381904	5217608	32.6	42.6	43.8
530148	Vacant	386500	5218264	32.0	42.0	43.8
530145	Vacant	386513	5218265	31.9	41.9	43.7
530055	Vacant	381873	5217610	32.5	42.5	43.7

Table 7 Summary of Acoustic Modeling Results

Receptor ID	Receptor Status	UTM Coordinates (m)		Received Sound Levels (dBA)		
		Easting (X)	Northing (Y)	Cut-in Wind Speed	Maximum Wind Speed	Anomalous Meteorological Conditions
530141	Occupied	386514	5218238	31.8	41.8	43.7
530059	Vacant	381871	5217584	32.3	42.3	43.6
530040	Occupied	381894	5217518	32.0	42.0	43.5
530044	Vacant	381925	5217498	31.9	41.9	43.5
60070	Occupied	376164	5212140	31.7	41.7	43.2
60058	Occupied	376209	5210903	31.9	41.9	43.2
530117	Occupied	383241	5219439	30.6	40.6	42.9
530120	Vacant	383225	5219446	30.4	40.4	42.7
530028	Vacant	380693	5217784	30.8	40.8	41.9
530023	Vacant	380673	5217814	30.8	40.8	41.8
60083	Occupied	368754	5212014	29.6	39.6	41.8
60054	Occupied	376515	5211062	29.6	39.6	41.8
530160	Occupied	386944	5216909	29.4	39.4	41.7
530164	Vacant	386937	5216938	29.4	39.4	41.6
530036	Vacant	381502	5217191	29.4	39.4	41.6
530020	Occupied	380646	5217791	30.3	40.3	41.5
530083	Vacant	384560	5214155	30.1	40.1	41.4
530085	Vacant	384542	5214136	30.1	40.1	41.4
530080	Vacant	384574	5214158	30.0	40.0	41.4
60090	Occupied	368671	5211608	29.1	39.1	41.2
60048	Occupied	376397	5210435	29.2	39.2	41.2
530087	Vacant	384543	5214100	29.8	39.8	41.2
530029	Vacant	380626	5217756	29.9	39.9	41.2
60085	Occupied	368637	5211618	28.9	38.9	41.1
530090	Vacant	384543	5214091	29.7	39.7	41.1
60076	Occupied	376229	5212642	28.7	38.7	41.1
530076	Occupied	384588	5214106	29.5	39.5	41.1
530033	Vacant	380615	5217720	29.6	39.6	40.9
60027a	Occupied	373800	5209328	28.0	38.0	40.8
60040	Vacant	375079	5209360	28.3	38.3	40.7
60028	Occupied	373971	5209320	27.7	37.7	40.6
60035	Occupied	374268	5209331	27.6	37.6	40.5
60042	Occupied	375321	5209336	28.2	38.2	40.5
60024a	Occupied	372255	5209130	27.9	37.9	40.3
60044	Occupied	375770	5209460	28.1	38.1	40.3
60092	Occupied	368562	5211213	28.0	38.0	40.3
60052	Occupied	376671	5210591	27.6	37.6	40.1
60002a	Occupied	375123	5214163	26.5	36.5	39.7

Table 7 Summary of Acoustic Modeling Results

Receptor ID	Receptor Status	UTM Coordinates (m)		Received Sound Levels (dBA)		
		Easting (X)	Northing (Y)	Cut-in Wind Speed	Maximum Wind Speed	Anomalous Meteorological Conditions
530125	Vacant	386672	5220354	27.1	37.1	39.4
530129	Vacant	386624	5220336	27.2	37.2	39.4
530121	Occupied	386637	5220374	26.8	36.8	39.2
530003	Vacant	380670	5216823	25.1	35.1	38.1
53007	Vacant	380694	5216793	25.0	35.0	38.1
530010	Vacant	380647	5216753	24.6	34.6	37.8
530014	Vacant	380625	5216754	24.6	34.6	37.7

Reported sound pressure levels are representative of receptors located downwind of the WTGs; lower sound levels are expected in other directions dependent on wind velocities, speed, direction, and gustiness. The acoustic modeling results were compared to the broadband (dBA) guideline criteria as described in Section 2.0 of this report, specifically the EPA broadband guideline of 55 dBA L_{dn} (equivalent to a $L_{eq(1-hour)}$ of 48.6 dBA assuming continuous 24-hour operation, 365 days a year), which was used as a Project acoustic design goal. The EPA guideline limits presented in Section 2.1 are based on the yearly L_{dn} . To calculate the yearly L_{dn} , consideration of the variation in atmospheric conditions is necessary over an extended time period to determine the long term sound exposure. The approach employed in this Project acoustic assessment assumed a sustained wind speed at WTG hub height sufficient to result in full rotation wind turbine operation over a continuous one year period. Actual wind speeds and directions over the course of a year will vary. The yearly L_{dn} is calculated using the following equation per the EPA guidance document:

$$Yearly L_{dn}(exterior) = 10 \cdot \log_{10} \left[\frac{\left(15 \cdot 10^{\left(\frac{Leq(1-hour)}{10} \right)} + 9 \cdot 10^{\left(\frac{(Leq(1-hour) + 10)}{10} \right)} \right)}{24} \right] dBA$$

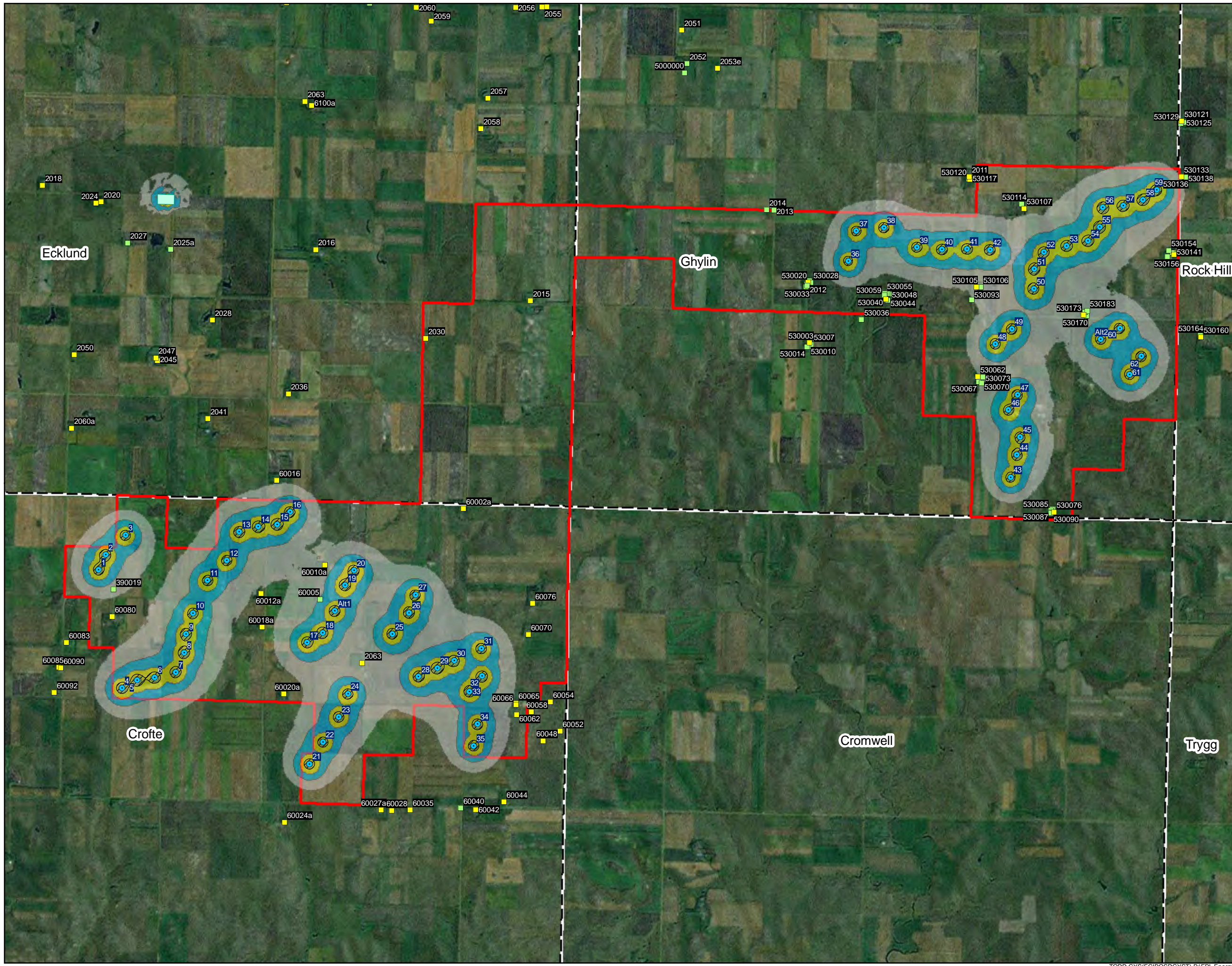
To calculate yearly L_{dn} , the $L_{eq(1-hour)}$ in the above equation was assigned the value of the Project-generated sound level for the WTG operating condition under analysis (cut-in or at full rotational speed). Under real world meteorological conditions wind speed and direction will be variable. Over the course of a year, the actual received sound pressure levels as a result of Project operations will fluctuate from periods of calm or low level wind speeds, to wind speeds ranging from cut-in up to maximum rotational. During periods of calm and low level wind speeds below the rated cut-in wind speeds when WTGs will not operate, the Project will generate negligible sound. For time-varying sources, including wind energy projects, assessing sound levels generated during maximum rotational is a worst case assessment

approach and will ensure compliance during all other WTG operational conditions. Though this long term operational operating scenario is not a realistic condition, the intention of employing this calculation methodology is to provide a further level of conservatism in the calculation sound impacts.

WILTON WIND IV, LLC
 WILTON IV WIND ENERGY CENTER
 BURLEIGH COUNTY, NORTH DAKOTA

FIGURE 2
 RECEIVED SOUND LEVELS:
 WIND TURBINES AT CUT-IN WIND SPEED

OCTOBER 2011

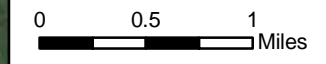
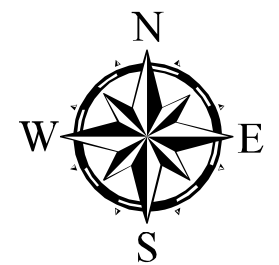


Legend

- Wilton IV WTG (GE 1.6 xle)
- Receptor - Occupied
- Receptor - Unoccupied
- Substation
- Project Boundary
- Civil Township

Isopleth Ranges (dBA)

- 35 - 40
- 40 - 45
- 45 - 50
- 50 - 55
- > 55
- Isopleth Range Exceeding EPA Guideline (>48.6 dBA)



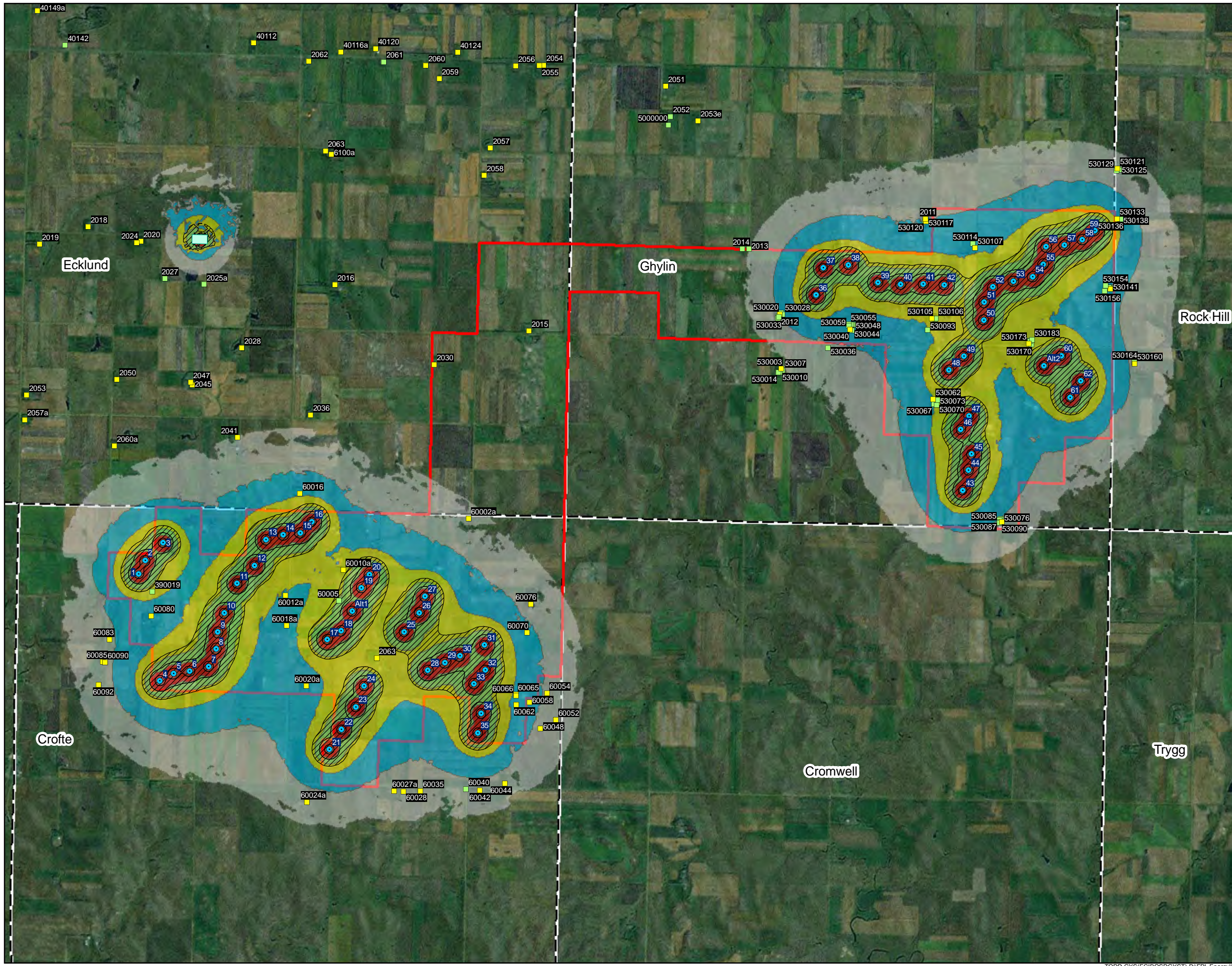
REFERENCE MAP



WILTON WIND IV, LLC
 WILTON IV WIND ENERGY CENTER
 BURLEIGH COUNTY, NORTH DAKOTA

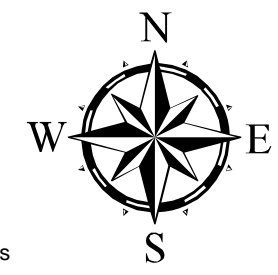
FIGURE 3
 RECEIVED SOUND LEVELS:
 WIND TURBINES AT MAXIMUM
 ROTATIONAL WIND SPEED

OCTOBER 2011



Legend

- Wilton IV WTG (GE 1.6 xle)
 - Receptor - Occupied
 - Receptor - Unoccupied
 - Substation
 - Project Boundary
 - Civil Township
- Isopleth Ranges (dBA)**
- 35 - 40
 - 40 - 45
 - 45 - 50
 - 50 - 55
 - > 55
 - Isopleth Range Exceeding EPA Guideline (>48.6 dBA)



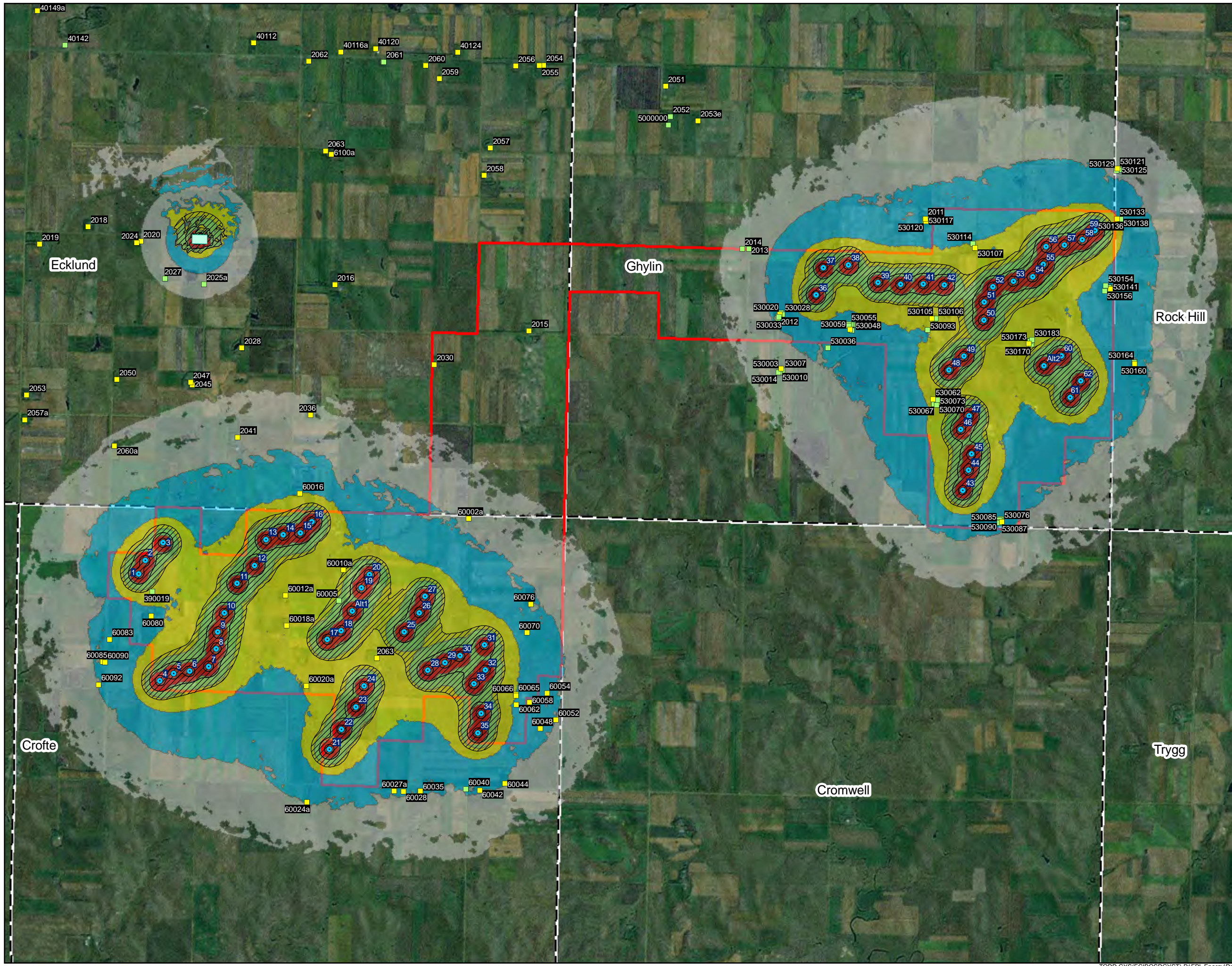
REFERENCE MAP



WILTON WIND IV, LLC
 WILTON IV WIND ENERGY CENTER
 BURLEIGH COUNTY, NORTH DAKOTA

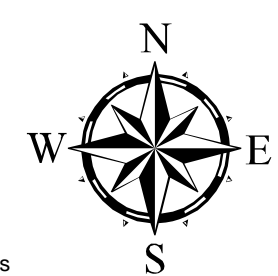
FIGURE 4
 RECEIVED SOUND LEVELS:
 WIND TURBINES AT MAXIMUM
 ROTATIONAL WIND SPEED,
 ANOMALOUS METEOROLOGICAL
 CONDITIONS

OCTOBER 2011



Legend

- Wilton IV WTG (GE 1.6 xle)
 - Receptor - Occupied
 - Receptor - Unoccupied
 - Substation
 - Project Boundary
 - Civil Township
- Isopleth Ranges (dBA)**
- 35 - 40
 - 40 - 45
 - 45 - 50
 - 50 - 55
 - > 55
 - Isopleth Range Exceeding EPA Guideline (>48.6 dBA)



REFERENCE MAP



WILTON WIND IV, LLC
 WILTON IV WIND ENERGY CENTER
 BURLEIGH COUNTY, NORTH DAKOTA

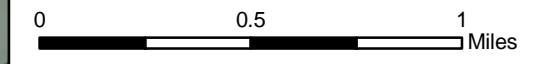
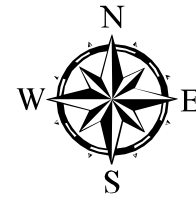
FIGURE 5
 CROFTE TOWNSHIP

RECEIVED SOUND LEVELS:
 WIND TURBINES AT MAXIMUM ROTATIONAL
 WIND SPEED, ANOMALOUS
 METEOROLOGICAL CONDITIONS

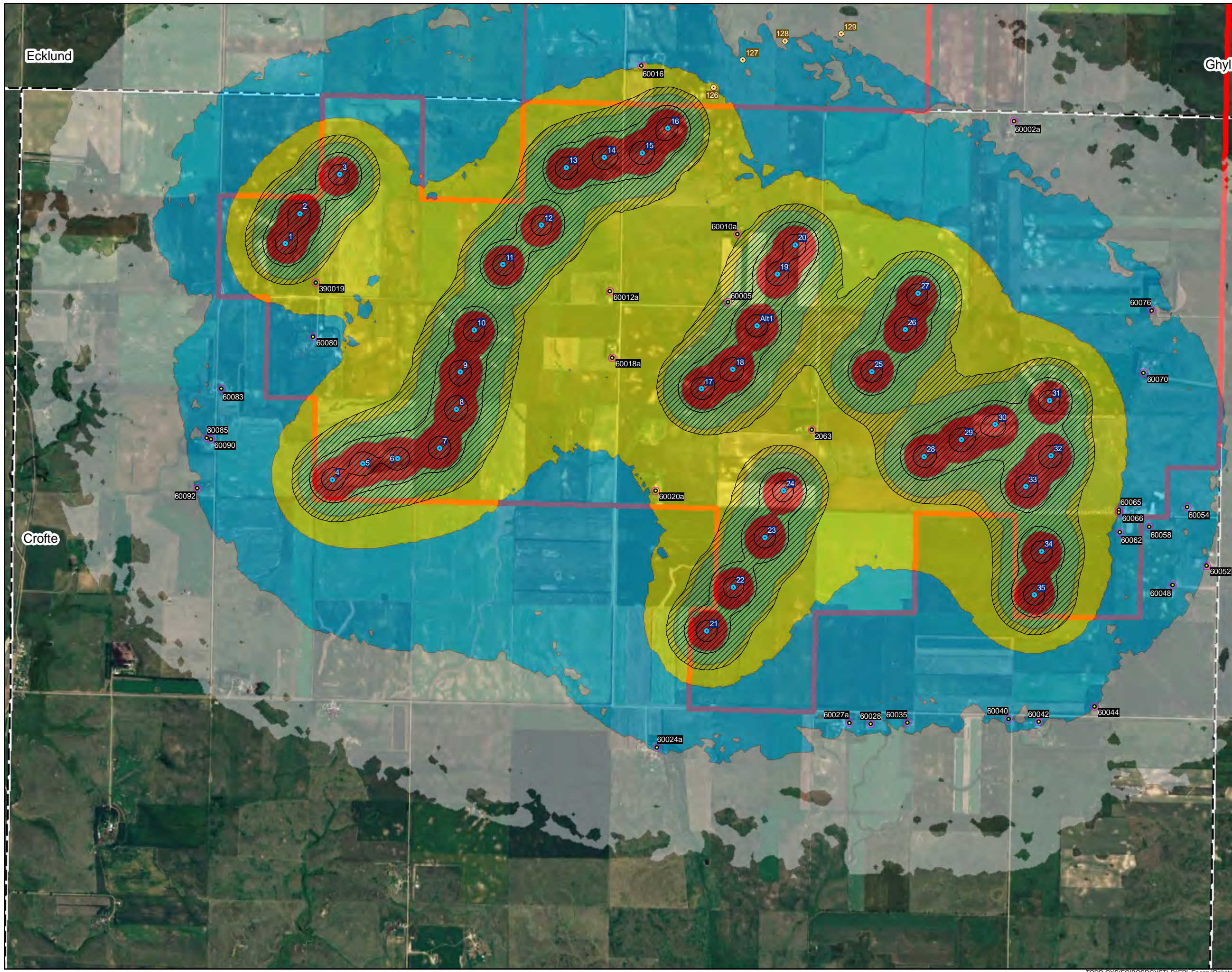
OCTOBER 2011

Legend

- Wilton IV WTG (GE 1.6 xle)
 - Wilton I WTG (GE 1.5 sle)
 - Wilton II WTG (GE 1.5 xle)
 - Baldwin WTG (GE 1.6 xle)
 - Receptor - Occupied
 - Receptor - Unoccupied
 - 100ft Receptor Buffer
 - Project Boundary
 - Civil Township
- Isopleth Ranges (dBA)**
- 35 - 40
 - 40 - 45
 - 45 - 50
 - 50 - 55
 - > 55
 - Isopleth Range Exceeding EPA Guideline (>48.6 dBA)



REFERENCE MAP



Ecklund

Ghylin

Crofte

5.0 OTHER SOUND CONSIDERATIONS

5.1 Cumulative Effects

An assessment of cumulative environmental impacts considers the potential impact of a proposed project in the context of past, present, and reasonably foreseeable developments to ensure that any potential environmental impacts are not considered in isolation. The cumulative effects can result from individually minor, but collectively more significant actions taking place over a given period of time. For the purpose of this analysis, cumulative impacts are impacts that result from the incremental consequences of the Project when added to other nearby existing or planned wind energy developments. A wind energy development would need to be located within approximately 2 to 3 km of the proposed wind farm in order to present a possible cumulative influence on sound.

The Project was considered in association the Wilton I, II, and Baldwin Wind Energy Centers, adjacent to and generally north-northwest of the Wilton IV Project Area. The Wilton I, II, and Baldwin Wind Energy Centers have been constructed and are currently generating electricity, consisting of a total of 130 WTGs:

- **Wilton I Wind Energy Center:** 33 GE 1.5 MW sle WTGs; hub height 80 m (262.5 ft), rotor diameter of 77 m (253 feet), and total nameplate capacity of 49.5 MW;
- **Wilton II Wind Energy Center:** 33 GE 1.5 xle MW WTGs; hub height 80 m (262.5 ft), rotor diameter of 82.5 m (270 feet), and total nameplate capacity of 49.5 MW; and
- **Baldwin Wind Energy Center:** 64 GE 1.6 xle MW WTGs; hub height 80 m (262.5 ft), rotor diameter of 82.5 m (270 feet), and total nameplate capacity of 102.4 MW.

The sound power information for the Baldwin Wind Energy Center WTGs is identical to that of the Wilton IV Project (Tables 5 and 6). Table 8 provides a summary of sound power data for the GE 1.5 MW sle WTG used for Wilton I correlated by wind speed at a height of 10 meters (32.8 ft) above grade. A confidence interval of $k=2$ dB was incorporated into the acoustic modeling analysis.

Table 8 Broadband Sound Power Levels (dBA) Correlated with Wind Speed

10-meter AGL Wind Speed	WTG L _{max} Sound Power Level (L _w) at Reference Wind Speed						
	9 mph (4 m/s)	11.2 mph (5 m/s)	13.4 mph (6 m/s)	15.9 mph (7 m/s)	17.9 mph (8 m/s)	20.1 mph (9 m/s)	22.4 mph (10 m/s)
GE 1.5 MW sle	<96	99.1	103	<104.0	<104.0	<104.0	<104.0

A summary of sound power data for the GE 1.5 MW sle by octave band center frequency is presented in Table 9.

Table 9 GE 1.5 MW sle Sound Power Level by Octave Band Center Frequency

Frequency (Hz)	Octave Band Sound Power Level (dBA)								Broadband (dBA)
	63	125	250	500	1000	2000	4000	8000	
GE 1.5 MW sle	85.1	94	97.2	98.6	97.9	94.5	87.3	78.1	104.0

Table 10 provides a summary of sound power data for the GE 1.5 MW xle WTG used for Wilton II correlated by wind speed at a height of 10 meters (32.8 ft) above grade. A confidence interval of K=2 dB was incorporated into the acoustic modeling analysis.

Table 10 Broadband Sound Power Levels (dBA) Correlated with Wind Speed

10-meter AGL Wind Speed	WTG L _{max} Sound Power Level (L _w) at Reference Wind Speed						
	9 mph (4 m/s)	11.2 mph (5 m/s)	13.4 mph (6 m/s)	15.9 mph (7 m/s)	17.9 mph (8 m/s)	20.1 mph (9 m/s)	22.4 mph (10 m/s)
GE 1.5 MW xle	<96	<96	98.8	102.3	<104.0	<104.0	<104.0

A summary of sound power data for the GE 1.5 MW xle by octave band center frequency is presented in Table 11.

Table 11 GE 1.5 MW xle Sound Power Level by Octave Band Center Frequency

Frequency (Hz)	Octave Band Sound Power Level (dBA)								Broadband (dBA)
	63	125	250	500	1000	2000	4000	8000	
GE 1.5 MW xle	83.4	92.2	97.8	99.4	97.7	93.4	86.6	84.8	104.0

The existing Wilton I, II, Baldwin, and proposed Wilton IV wind energy projects would invariably operate concurrently; therefore a cumulative impact assessment was completed. In addition, cumulative effects were assessed for all WTGs in conjunction with operation of four on-site electrical substations, one servicing each of the Wind Energy Centers.

Modeling results for the cumulative effects assessment are presented in the form of sound contour level maps. Figures 6, 7, and 8 show the Wilton I, II, and Baldwin WTGs with the Wilton IV WTGs at cut-in wind speeds, and maximum rotational wind speeds for moderate downwind meteorological conditions and during anomalous meteorological conditions. Received sound levels resulting from concurrent operation of the as-built Wilton I, II, and Baldwin Wind Energy Centers and the Wilton IV Wind Energy Center are also given in Table 12. The results of the cumulative assessment show that there are potential exceedances at six receptors under maximum rotational wind speeds under moderate downwind conditions and potential exceedances at nine receptors under maximum rotational wind speeds under anomalous conditions (bolded). Of these potential exceedances only one of the six exceedances under moderate downwind conditions is identified as an occupied structure (receptor ID 2050). Under anomalous conditions three receptors were identified as occupied for residential use and therefore potentially noise sensitive (receptor IDs 2050, 2020, and 2024).

Table 12 Summary of Acoustic Modeling Results

Receptor ID	Receptor Status	UTM Coordinates (m)		Received Sound Levels (dBA)		
		Easting (X)	Northing (Y)	Cut-in Wind Speed	Maximum Wind Speed	Anomalous Meteorological Conditions
2027	Unoccupied	369737	5218421	47.4	55.7	56.0
60005	Barn	372824	5212709	41.4	51.4	51.8
2025a	Unoccupied	370431	5218318	41.4	49.4	50.5
41014a	Non-Residential	368950	5226845	40.1	50.1	50.3
41013a	Non-Residential	368951	5226825	40.0	50.0	50.1
2050	Occupied	368883	5216631	39.8	49.5	50.0
60010a	Unoccupied	372900	5213255	38.2	48.2	49.0
2020	Occupied	369311	5219083	40.2	47.1	48.7
2024	Occupied	369232	5219059	40.1	47.2	48.7
40039	Occupied	373837	5227612	37.9	47.9	48.3
530170	Barn	385112	5217255	37.4	47.4	48.2
40074a	Non-Residential	370668	5225623	37.4	47.4	48.0
530167	Barn	385105	5217281	37.0	47.0	47.9
40069	Unoccupied	372228	5226803	37.2	47.2	47.8
40070a	Unoccupied	372259	5227439	37.2	47.2	47.8
2063	House	373499	5211685	36.9	46.9	47.8
530173	House	385063	5217268	36.9	46.9	47.8
60016	House	372129	5214610	37.0	47.0	47.7
530179	Barn	385089	5217313	36.8	46.8	47.7
390019	Barn	369513	5212867	37.2	47.2	47.7
390019	Non-Residential	369513	5212867	37.2	47.2	47.7
530175	Barn	385078	5217318	36.7	46.7	47.6
40134a	Occupied	371187	5223960	37.1	47.0	47.6
530183	Barn	385122	5217332	36.6	46.6	47.6
2019	Occupied	367510	5219031	38.5	46.6	47.6
2014	Non-Residential	379983	5218952	38.9	47.1	47.5
40135	Occupied	371067	5223960	36.8	46.7	47.4
530106	Barn	383413	5217713	36.6	46.6	47.4
2063	Occupied	372584	5220687	38.2	46.0	47.4
2028	Occupied	371097	5217187	36.8	46.0	47.3
40066	Occupied	372315	5225695	36.5	46.5	47.3
530101	Barn	383401	5217704	36.5	46.5	47.3
530105	House	383345	5217711	36.5	46.4	47.3
2018	Occupied	368373	5219341	37.9	45.5	47.2
390002	Non-Residential	372431	5226918	36.1	46.1	47.0
6100a	Occupied	372687	5220626	37.4	45.2	46.7

Table 12 Summary of Acoustic Modeling Results

Receptor ID	Receptor Status	UTM Coordinates (m)		Received Sound Levels (dBA)		
		Easting (X)	Northing (Y)	Cut-in Wind Speed	Maximum Wind Speed	Anomalous Meteorological Conditions
2047	Occupied	370195	5216578	35.9	45.3	46.7
60012a	House	371877	5212797	35.0	45.0	46.6
530073	Barn	383446	5216269	35.9	45.9	46.6
40112	Occupied	371312	5222602	36.3	45.5	46.6
530070	Barn	383428	5216176	35.8	45.8	46.5
2045	Occupied	370219	5216534	35.6	44.9	46.4
40125a	Non-Residential	372393	5227947	35.7	45.7	46.4
530093	Industrial	383271	5217511	35.3	45.3	46.4
2016	Occupied	372755	5218312	35.6	44.5	46.3
60018a	House	371895	5212263	34.4	44.4	46.2
2013	Non-Residential	380100	5218948	37.5	45.7	46.2
530067	Barn	383380	5216196	35.3	45.3	46.1
530107	House	384110	5218969	34.9	44.8	46.1
530062	House	383364	5216276	35.1	45.1	45.9
530133	House	386633	5219482	35.3	45.3	45.8
40342	Non-Residential	370909	5226405	34.7	44.7	45.8
530114	Barn	384071	5219042	34.3	44.2	45.7
40097	Occupied	368972	5227351	35.1	45.1	45.5
2011	Occupied	383232	5219483	35.7	44.4	45.5
530120	Barn	383225	5219446	35.7	44.5	45.4
530117	House	383241	5219439	35.6	44.4	45.4
40037a	Occupied	373984	5228148	34.6	44.6	45.4
60020a	House	372243	5211194	33.6	43.6	45.4
2036	Occupied	372317	5216000	33.9	43.4	45.3
40060	Unoccupied	372120	5223886	34.3	44.1	45.2
60065	House	375966	5211041	34.6	44.6	45.2
530136	Barn	386682	5219476	34.6	44.6	45.2
60066	Occupied	375965	5211018	34.5	44.5	45.2
6099	Occupied	366688	5218078	35.3	43.8	45.1
40089	Occupied	367924	5226018	34.7	44.7	45.0
40063a	Unoccupied	372312	5224843	33.5	43.4	45.0
530138	Barn	386699	5219476	34.3	44.3	44.9
40086	Occupied	368967	5226144	34.3	44.3	44.8
60080	House	369491	5212432	33.3	43.3	44.7
60062	House	375973	5210859	34.2	44.2	44.7
40093a	Occupied	367907	5226008	34.3	44.3	44.7
6096	Occupied	366619	5217768	34.2	43.3	44.6
40076a	Non-Residential	370151	5225694	33.1	43.1	44.6

Table 12 Summary of Acoustic Modeling Results

Receptor ID	Receptor Status	UTM Coordinates (m)		Received Sound Levels (dBA)		
		Easting (X)	Northing (Y)	Cut-in Wind Speed	Maximum Wind Speed	Anomalous Meteorological Conditions
2041	Occupied	371025	5215602	32.8	42.2	44.5
40077	Occupied	370102	5225602	33.2	43.2	44.5
40055a	Occupied	372334	5224178	33.2	43.1	44.5
530154	Industrial	386429	5218300	32.5	42.5	44.1
530049	Barn	381924	5217605	32.8	42.7	44.1
530048	Barn	381950	5217604	32.8	42.7	44.1
530053	Barn	381904	5217608	32.8	42.8	44.1
40033	Occupied	373882	5225842	32.6	42.6	44.1
530156	Industrial	386411	5218203	32.2	42.2	44.1
2062	Occupied	372289	5222275	33.4	41.5	44.1
40139a	Non-Residential	369726	5224097	32.7	42.5	44.0
530055	Barn	381873	5217610	32.8	42.7	44.0
40028a	Non-Residential	375368	5229059	33.4	43.4	44.0
530059	Barn	381871	5217584	32.6	42.5	43.9
530040	House	381894	5217518	32.4	42.2	43.9
530044	Barn	381925	5217498	32.3	42.2	43.9
530152	Barn	386487	5218266	32.0	42.0	43.8
530148	Barn	386500	5218264	32.0	42.0	43.8
530145	Barn	386513	5218265	31.9	41.9	43.7
530141	House	386514	5218238	31.8	41.8	43.7
40081	Occupied	369701	5225578	31.4	41.4	43.4
60070	House	376164	5212140	31.8	41.8	43.3
2058	Occupied	375404	5220251	33.3	41.4	43.3
60058	House	376209	5210903	31.9	41.9	43.2
2060a	Occupied	368839	5215450	31.4	41.2	43.2
530023	Barn	380673	5217814	31.8	41.5	42.9
530028	Barn	380693	5217784	31.8	41.5	42.9
530020	House	380646	5217791	31.5	41.1	42.6
40116a	Occupied	372859	5222443	31.2	39.5	42.6
40130a	Unoccupied	375933	5228266	31.4	41.4	42.4
2020w	Occupied	365973	5217765	31.4	40.2	42.4
530029	Barn	380626	5217756	31.1	40.7	42.4
2053	Occupied	367280	5216355	30.6	40.3	42.3
2012	Unoccupied	380630	5217738	31.1	40.7	42.3
530036	Industrial	381502	5217191	30.0	39.8	42.1
530033	Barn	380615	5217720	30.8	40.4	42.0
60083	House	368754	5212014	29.6	39.6	41.8
60054	House	376515	5211062	29.6	39.6	41.8

Table 12 Summary of Acoustic Modeling Results

Receptor ID	Receptor Status	UTM Coordinates (m)		Received Sound Levels (dBA)		
		Easting (X)	Northing (Y)	Cut-in Wind Speed	Maximum Wind Speed	Anomalous Meteorological Conditions
60002a	House	375123	5214163	28.7	38.7	41.7
530160	House	386944	5216909	29.4	39.4	41.7
530164	Barn	386937	5216938	29.4	39.4	41.6
2030	Occupied	374516	5216892	29.2	38.7	41.5
530083	Barn	384560	5214155	30.1	40.1	41.4
60076	House	376229	5212642	28.9	38.9	41.4
530085	Barn	384542	5214136	30.1	40.1	41.4
530080	Barn	384574	5214158	30.0	40.0	41.4
40343	Unoccupied	370818	5228021	28.9	38.9	41.3
2057	Occupied	375513	5220742	30.5	38.6	41.3
40336a	Unoccupied	373387	5228862	28.5	38.5	41.3
60090	House	368671	5211608	29.1	39.1	41.2
2061	Non-Residential	373618	5222266	29.8	38.2	41.2
60048	House	376397	5210435	29.2	39.2	41.2
530087	Barn	384543	5214100	29.8	39.8	41.2
60085	House	368637	5211618	28.9	38.9	41.1
530090	Barn	384543	5214091	29.7	39.7	41.1
40120	Occupied	373474	5222500	29.3	37.8	41.1
530076	House	384588	5214106	29.5	39.5	41.1
60027a	House	373800	5209328	28.0	38.0	40.8
2057a	Occupied	367248	5215913	28.1	37.8	40.7
60040	Municipal	375079	5209360	28.3	38.3	40.7
60028	House	373971	5209320	27.7	37.7	40.6
60028	Occupied	373971	5209320	27.7	37.7	40.6
60035	House	374268	5209331	27.6	37.6	40.5
60042	House	375321	5209336	28.2	38.2	40.5
40128	Non-Residential	372293	5228874	27.9	37.9	40.5
60024a	House	372255	5209130	27.9	37.9	40.3
60044	House	375770	5209460	28.1	38.1	40.3
60092	House	368562	5211213	28.0	38.0	40.3
40031	Occupied	375434	5226226	27.4	37.4	40.2
2064	Unoccupied	366589	5221003	29.1	37.3	40.2
2066a	Occupied	365765	5216992	28.4	37.7	40.1
60052	House	376671	5210591	27.6	37.6	40.1
2059	Occupied	374606	5221973	28.9	37.1	40.0
2060	Occupied	374367	5222200	28.6	36.9	39.9
2065	Occupied	366333	5220865	28.6	36.8	39.9
40049	Non-Residential	373826	5224083	26.4	36.1	39.6

Table 12 Summary of Acoustic Modeling Results

Receptor ID	Receptor Status	UTM Coordinates (m)		Received Sound Levels (dBA)		
		Easting (X)	Northing (Y)	Cut-in Wind Speed	Maximum Wind Speed	Anomalous Meteorological Conditions
40140a	Unoccupied	368910	5223606	26.8	36.3	39.6
530125	Barn	386672	5220354	27.1	37.1	39.5
2066	Occupied	366175	5220821	28.1	36.3	39.4
530129	Barn	386624	5220336	27.2	37.2	39.4
530003	House	380670	5216823	26.6	36.1	39.3
53007	Barn	380694	5216793	26.5	36.1	39.3
530121	House	386637	5220374	26.9	36.8	39.2
40142	Non-Residential	367963	5222567	27.9	35.5	39.0
40051	Occupied	373899	5223692	26.0	35.4	39.0
530010	Barn	380647	5216753	26.2	35.7	39.0
530014	Barn	380625	5216754	26.2	35.7	39.0
40021a	Occupied	376429	5227682	26.2	36.2	38.9
2015	Occupied	376198	5217497	27.3	35.6	38.7
40105a	Occupied	367270	5227370	26.5	36.5	38.5
2067	Occupied	366079	5220821	27.1	35.3	38.5
2068	Occupied	364110	5219367	27.9	36.1	38.1
40124	Occupied	374934	5222439	25.9	34.1	37.6
40100	Occupied	367556	5227926	25.2	35.2	37.4
5000000	Non-Residential	378668	5221147	26.0	34.1	37.3
2053e	Occupied	379196	5221219	25.6	33.8	37.1
40025	Occupied	375732	5229916	24.2	34.2	37.0
40149a	Occupied	367475	5223179	24.1	32.8	36.6
2052	Unoccupied	378705	5221297	24.8	33.0	36.3
40018a	Occupied	375524	5224880	22.4	32.4	36.0
2056	Occupied	375960	5222198	24.2	32.3	35.9
40099	Occupied	367401	5228151	23.2	33.2	35.9
2055	Occupied	376380	5222202	23.6	31.6	35.3
2054	Occupied	376457	5222208	23.3	31.4	35.1
40196	Occupied	365654	5221719	23.3	31.3	34.9
40198	Occupied	365596	5221731	23.0	31.0	34.6
2051	Occupied	378621	5221835	22.7	30.8	34.4
40193	Unoccupied	365837	5222282	22.1	30.1	33.9
40011a	Non-Residential	375671	5223950	19.5	29.1	33.0
40326	Non-Residential	365834	5226625	18.8	28.8	32.2
40324	Non-Residential	365832	5226445	18.7	28.7	32.1
40044	Occupied	375954	5224137	18.3	28.1	32.0
40323	Occupied	365791	5225833	18.1	28.1	31.5
40155a	Occupied	366297	5223595	18.2	27.2	31.1

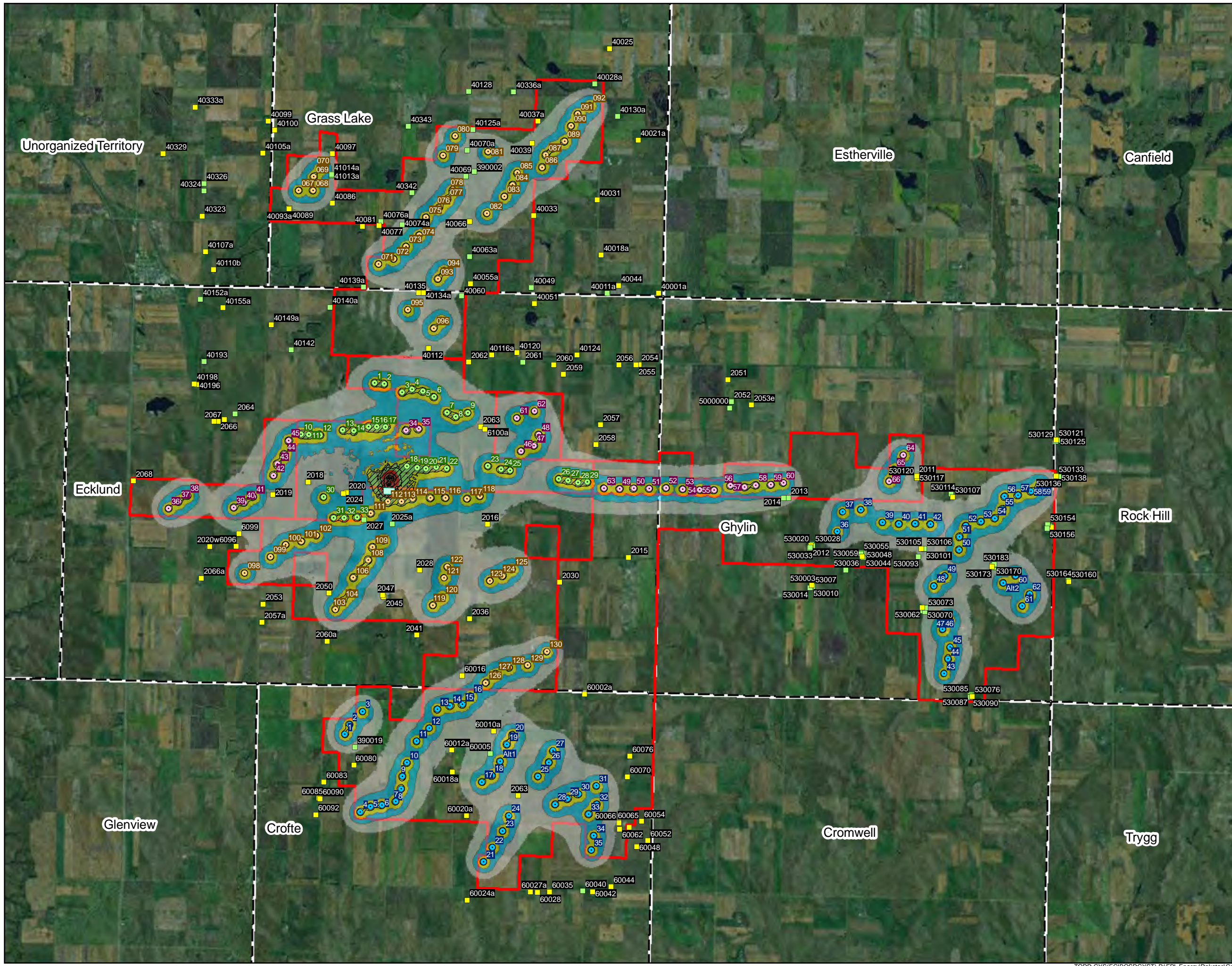
Table 12 Summary of Acoustic Modeling Results

Receptor ID	Receptor Status	UTM Coordinates (m)		Received Sound Levels (dBA)		
		Easting (X)	Northing (Y)	Cut-in Wind Speed	Maximum Wind Speed	Anomalous Meteorological Conditions
40107a	Occupied	365871	5224958	16.8	26.8	30.5
40333a	Occupied	365619	5228487	15.6	25.6	29.4
40110b	Occupied	366065	5224523	15.6	25.6	29.3
40329	Occupied	364837	5227355	14.6	24.6	28.4
40152a	Unoccupied	365746	5223799	11.4	21.4	25.3
40001a	Occupied	376933	5223953	<20	<20	<20

WILTON WIND IV, LLC
 WILTON IV WIND ENERGY CENTER
 BURLEIGH COUNTY, NORTH DAKOTA

FIGURE 6
 CUMULATIVE EFFECTS
 RECEIVED SOUND LEVELS:
 WIND TURBINES AT CUT-IN WIND SPEED

OCTOBER 2011



Legend

- Wilton IV WTG (GE 1.6 xle)
- Wilton I WTG (GE 1.5 sle)
- Wilton II WTG (GE 1.5 xle)
- Baldwin WTG (GE 1.6 xle)
- Receptor - Occupied
- Receptor - Unoccupied
- Substation
- Project Boundary
- Civil Township

Isopleth Ranges (dBA)

- 35 - 40
- 40 - 45
- 45 - 50
- 50 - 55
- > 55
- Isopleth Range Exceeding EPA Guideline (>48.6 dBA)

0 0.5 1 2 Miles

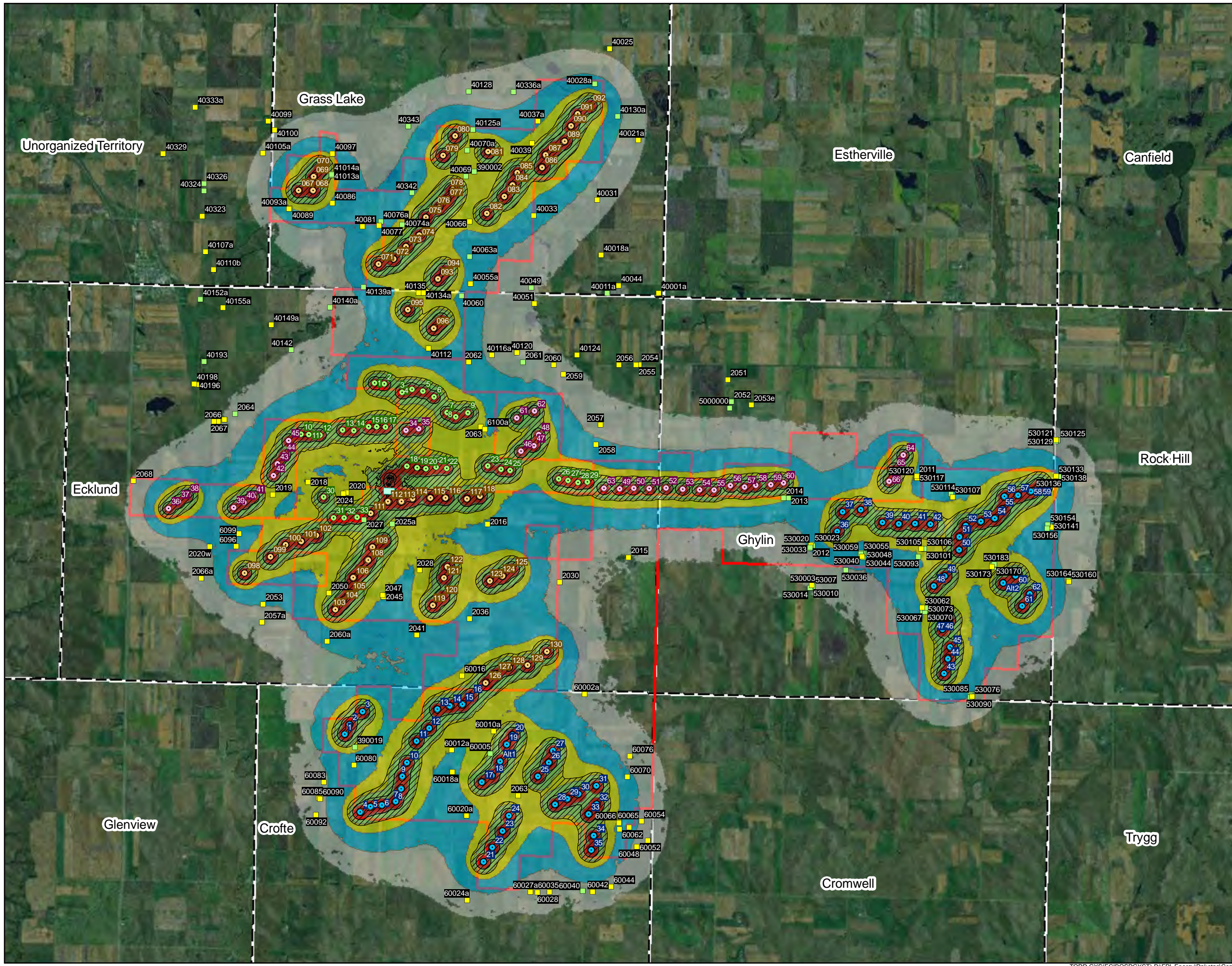
REFERENCE MAP



WILTON WIND IV, LLC
 WILTON IV WIND ENERGY CENTER
 BURLEIGH COUNTY, NORTH DAKOTA

FIGURE 7
 CUMULATIVE EFFECTS
 RECEIVED SOUND LEVELS:
 WIND TURBINES AT MAXIMUM
 ROTATIONAL WIND SPEED

OCTOBER 2011



Legend

- Wilton IV WTG (GE 1.6 xle)
- Wilton I WTG (GE 1.5 sle)
- Wilton II WTG (GE 1.5 xle)
- Baldwin WTG (GE 1.6 xle)
- Receptor - Occupied
- Receptor - Unoccupied
- Substation
- Project Boundary
- Civil Township

Isopleth Ranges (dBA)

- 35 - 40
- 40 - 45
- 45 - 50
- 50 - 55
- > 55
- Isopleth Range Exceeding EPA Guideline (>48.6 dBA)

0 0.5 1 2 Miles

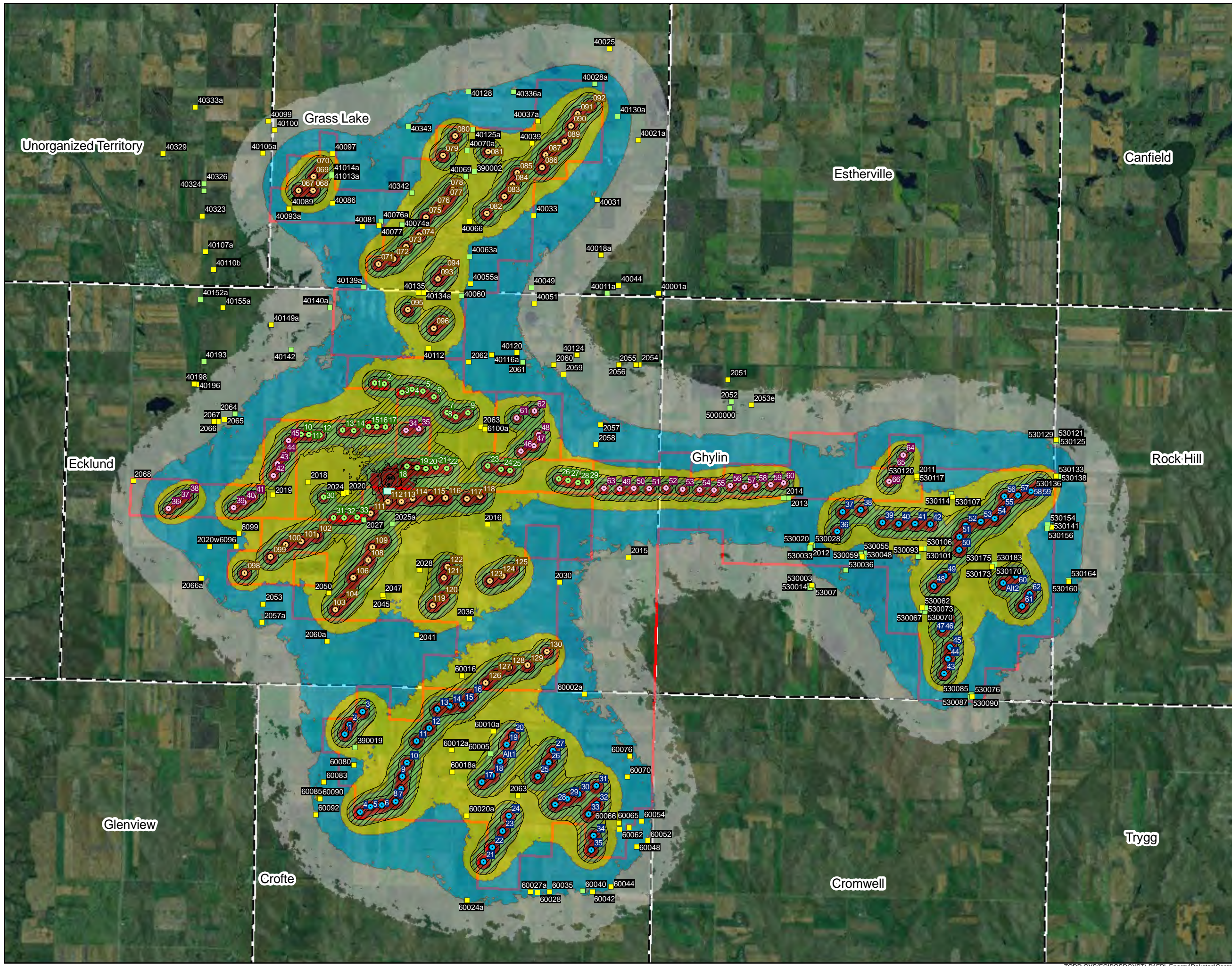
REFERENCE MAP



WILTON WIND IV, LLC
 WILTON IV WIND ENERGY CENTER
 BURLEIGH COUNTY, NORTH DAKOTA

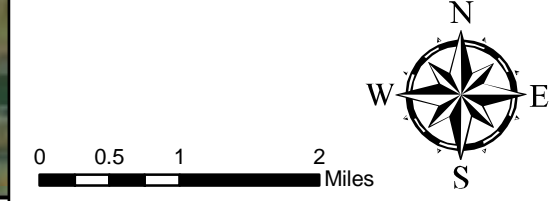
FIGURE 8
 CUMULATIVE EFFECTS
 RECEIVED SOUND LEVELS:
 WIND TURBINES AT MAXIMUM
 ROTATIONAL WIND SPEED,
 ANOMALOUS METEOROLOGICAL
 CONDITIONS

OCTOBER 2011



Legend

- Wilton IV WTG (GE 1.6 xle)
 - Wilton I WTG (GE 1.5 sle)
 - Wilton II WTG (GE 1.5 xle)
 - Baldwin WTG (GE 1.6 xle)
 - Receptor - Occupied
 - Receptor - Unoccupied
 - Substation
 - Project Boundary
 - Civil Township
- Isopleth Ranges (dBA)**
- 35 - 40
 - 40 - 45
 - 45 - 50
 - 50 - 55
 - > 55
 - Isopleth Range Exceeding EPA Guideline (>48.6 dBA)



REFERENCE MAP



5.2 Electrical Substation

Substations have switching, protection and control equipment and typically one or more transformers, which generate the sound generally described as a low humming. There are three main sound sources associated with a transformer: core noise, load noise and noise generated by the operation of the cooling equipment. The core vibrational noise is the principal noise source and does not vary significantly with electrical load. Transformers are designed and catalogued by megavolt ampere (MVA) ratings. Just as horsepower ratings designate the power capacity of an electric motor, a transformer's MVA rating indicates its maximum power output capacity. The National Electrical Manufacturers Association (NEMA) published NEMA Standards TR1-1993 (R2000), which establish the maximum noise level allowed for transformers, voltage regulators, and shunt reactors based on the equipment's method of cooling its dielectric fluid (air-cooled vs. oil-cooled) and the electric power rating.

Transformer noise is generated and will attenuate with distance at different rates depending on the transformer dimensions, voltage rating, and design. The noise produced by substation transformers is primarily caused by the load current in the transformer's conducting coils (or windings) and consequently the main frequency of this sound is twice the supply frequency. The characteristic humming sound consists of tonal components generated at harmonics of 120 Hz. Most of the acoustical energy resides in the fundamental tone (120 Hz) and the first 3 or 4 harmonics (240, 360, 480, 600 Hz). In addition to core vibration noise, transformer cooling fans may generate broadband noise, limited to periods when high heat loads require additional cooling capacity. The resulting audible sound is a combination of core noise and the broadband fan noise. Circuit-breaker operations may also cause audible noise, particularly the operation of air-blast breakers which is characterized as an impulsive sound event of very short duration. This is expected to occur only a few times throughout the year, and was therefore not considered in this analysis.

The American National Standards Institute (ANSI) and the International Electrotechnical Commission (IEC) have established methodologies for measurement of noise from transformers and other electrical devices. Measurements involve taking reference sound level measurements using microphones positioned 0.3 m (1 ft) from a tautly drawn string that encircles the device at a height above grade set at one-half the overall height of the device. The transformer noise output is the average of all measurements taken around the perimeter, incorporating contributions from both cooling fans and auxiliary equipment. The sound power radiated is calculated from the NEMA rating with total sound energy integrated over the total surface area of the transformer's four sides.

The proposed Wilton IV electrical substation and as-built substations servicing Wilton I, II, and Baldwin Wind Energy Centers were modeled using CadnaA. These substations are located adjacent to one another in the northwest section of the Project area. The existing Wilton I and II substations are located at the northwest corner of 279th Avenue NE and 52nd Street NE. The existing Baldwin substation is located in close proximity to the Wilton I and II substations, immediately south of 279th Avenue NE. The proposed Wilton IV substation will be located adjacent to and to the west of the existing Baldwin substation. To assess potential impacts of substation operation on nearby residential receptors, a screening level acoustic analysis was conducted using the CadnaA model incorporating site-specific topographic and terrain data and modeled cumulatively with WTG operational scenarios. Transformer sound source levels were estimated for a NEMA sound rating of 83 dBA and are presented in Table 13. The octave band center frequencies were calculated linearly based on the estimate transformer NEMA rating using standardized engineering technical guidelines.

Table 13 Transformer Sound Power Level (NEMA 83 dBA)

	Adjusted weighted Octave Band Sound Power Data (dBA)								
	31.5	63	125	250	500	1000	2000	4000	8000
NEMA Rating 83 dBA	88.2	94.2	96.2	91.2	91.2	85.2	80.2	75.2	68.2

Substations with transformer sizes of 10 to 150 MVA can present a noise concern if the separation distance is less than a few hundred feet between the transformer and noise sensitive receptors. In very quiet rural areas where the nighttime ambient acoustic environment can reach levels of 20 to 25 dBA under calm wind conditions, the sound generated from transformers of this size may be periodically audible at distances of half a mile or greater. Therefore, the transformer may be periodically audible at the nearest residences on infrequent occasions when background sound levels are very low.

5.3 Construction Noise

The development of Wilton IV Wind Energy Center will involve construction to establish access roads, excavate and form WTG foundations, prepare the site for crane-lifting and assemble and commission the WTGs. Work on large-scale wind projects such as Wilton IV Wind Energy Center is generally divided into four phases consisting of the following:

1. *Site Clearing*: The initial site mobilization phase includes the establishment of temporary site offices, workshops, stores, and other on-site facilities. Installation of erosion and sedimentation control measures will be completed as well as the preparation of initial haulage routes.
2. *Excavation*: This phase would begin with the excavation and formation of access roads and preparation of laydown areas. Excavation for the concrete turbine foundations would also be completed.
3. *Foundation Work*: Construction of the reinforced concrete turbine foundations would take place in addition to installation of the internal transmission network.
4. *Wind Turbine Installation*: Delivery of the turbine components would occur followed by their installation and commissioning.

Work on these construction activities is expected to overlap. It is likely that the wind turbines will be erected in small groupings. Each grouping may undergo testing and commissioning prior to commencement of full commercial operation. Other construction activities include those for the supporting infrastructure such as the substation, maintenance building, and the overhead transmission line.

The construction of the Project may cause short-term but unavoidable noise impacts. The sound levels resulting from construction activities vary significantly depending on several factors such as the type and age of equipment, the specific equipment manufacturer and model, the operations being performed, and the overall condition of the equipment and exhaust system mufflers. The list of construction equipment that may be used on the Project and estimates of near and far sound source levels are presented in Table 14.

Sounds generated by construction activities are typically exempt from state and local noise oversight provided that they occur within weekday, daytime periods as may be specified under local zoning or legal codes. Crofte Township ordinance states that construction noise or reasonable and necessary maintenance activities are allowed to exceed a 45 dBA Leq sound limit except between the nighttime hours of 11pm and 7am. All reasonable efforts will be made to minimize the impact of noise resulting from construction activities. As the design of the Project progresses and construction scheduling is finalized, the construction engineer normally notifies the community via public notice or alternative method of the expected Project construction commencement and duration to help minimize the effects of construction noise. In addition, the location of stationary equipment and the siting of construction laydown areas should be carefully selected to be as far removed from existing noise sensitive receptors as is practical. Candidate construction noise mitigation measures include scheduling louder construction activities during daytime hours and equipping internal combustion engines with appropriate sized muffler systems to minimize noise excessive emissions.

Table 14 Estimated L_{max} Sound Pressure Levels from Construction Equipment

Equipment*	Estimated Sound Pressure Level at 50 feet (dBA)	Estimated Sound Pressure Level at 2000 feet (dBA)
Crane	85	53
Forklift	80	48
Backhoe	80	48
Grader	85	53
Man basket	85	53
Dozer	83 - 88	51 - 56
Loader	83 - 88	51 - 56
Scissor Lift	85	53
Truck	84	52
Welder	73	41
Compressor	80	48
Concrete Pump	77	45

Data compiled in part from the following sources:

Federal Highway Administration, "Roadway Construction Noise Model User's Guide," Report FHWA-HEP-05-054 / DOT-VNTSC-FHWA-05-01, January 2006.

Power Plant Construction Noise Guide, Bolt Beranek and Newman, Inc. 1977.

Federal Highway Administration, "Procedures for Abatement of Highway Traffic Noise and Construction Noise." Code of Federal Regulations, Title 23, Part 772, 1992.

Construction activity will generate traffic having potential noise effects, such as trucks travelling to and from the site on public roads. At the early stage of the construction phase, equipment and materials will be delivered to the site, such as hydraulic excavators and associated spreading and compacting equipment needed to form access roads and foundation platforms for each turbine. Once the access roads are constructed, equipment for lifting the towers and turbine components will arrive. Traffic noise is categorized into two categories: (1) the noise that will occur during the initial temporary traffic movements related to turbine delivery, haulage of components and remaining construction; and (2) maintenance and ongoing traffic from staff and contractors, which is expected to be minor.

Federal laws prohibit state and local governments from regulating off-site sound levels generated by trucks and automobiles operating on a private site or public roadways. This federal regulatory preemption is specified in the Federal Noise Control Act of 1972 and in the Surface Transportation Assistance Act of

1982, both of which prohibit states and local authorities from regulating the noise emitted by trucks engaged in interstate commerce, i.e., truck deliveries. A federal OSHA preemption also prohibits local and state governments from regulating safety signals on trucks and construction equipment.

6.0 CONCLUSIONS

Project operational sound has been calculated and compared to relevant environmental noise guidelines as established by the EPA and OSHA. Acoustic modeling analysis per ISO 9613-2 only indicated one potential exceedance at receptor ID 60010a of the EPA noise guideline at maximum rotational wind speed under moderate downwind meteorological conditions and two potential exceedances at receptors IDs 60010a and 60005 at maximum rotational under anomalous meteorological conditions. Both receptor IDs 60010a and 60005 have been identified as identified as unoccupied and abandoned for residential purposes. Acoustic modeling results were also compared to the Crofte Township 45 dBA limit at all applicable non-participating residences and the Project was determined to be in compliance with this requirement.

The EPA guideline levels are not legally enforceable requirements, but serve as useful guidelines to determine the likelihood of adverse community noise impacts. The EPA guidelines do not require inaudibility of a sound source. In fact, even if a Project-generated sound level is below ambient conditions, the spectral and temporal characteristics of the new sound may result in perceptibility. The results of the acoustic modeling analysis indicate that operation of the Project may result in periodically audible sound within the adjacent areas under certain operational and meteorological conditions. Individual response to low-level WTG sound is largely subjective and therefore not easily predictable and may depend on several technical and non-technical factors, including predetermined perceptions of the Project and wind energy in general, individual and community economic incentives, existing background sound levels, the proximity of the listener to a single or grouping of WTGs, among other factors. Due to their support of Project development, Project participants have been found to be less likely to become annoyed by low-level WTG sound than non-participants. Non-participants that consider the development of renewable energy sources, and wind energy projects specifically, as beneficial will also be more likely to deem the low-level environmental noise as generally acceptable. Nonetheless, complaints about noise from wind energy projects may still occur, even when fixed standards or limits relative to existing ambient conditions are proposed and met. Inaudibility under all operating conditions is an unrealistic expectation, and one that is not required under any other industrial, commercial, or agricultural activity in the state of North Dakota.

In conclusion, the acoustic modeling analysis, inclusive of a number of conservative assumptions, demonstrates the Project is adequately designed to meet EPA guidelines at all noise sensitive occupied residences. Sound from the Project when audible will likely not be deemed excessive or unusually loud at the setback distances and will be consistent with sound generated at similar wind energy projects successfully sited throughout the state of North Dakota employing similar criteria and WTG setback distances. The Wilton IV Wind Energy Center is expected to generate sound levels that will be below EPA guideline limits and is therefore not expected to present an adverse noise impact with respect to public welfare, health and safety.

7.0 TECHNICAL REFERENCES

- Burleigh County Farmstead Location Report, Swenson, Hagen & Co P.C, August 4, 2010.
- Bolt, Beranek and Newman, Inc., Power Plant Construction Noise Guide, prepared for the Empire State Electric Energy Research Corporation, Report No. 3321, 1977.
- David Bies, Collin Hansen. "Engineering Noise Control: Theory and Practice", Pages 554-555, Published by Taylor & Francis, 2003.
- DataKustik GmbH. 2010. Computer-Aided Noise Abatement Model CadnaA, Version 4.1.137 Munich, Germany.
- Department of the Interior, Bureau of Land Management, "Final Programmatic Environmental Impact Statement on Wind Energy Development on BLM-Administered Lands in the Western United States, "FES 05-11, June 2005.
- Elliott, T. et al. Standard handbook of powerplant engineering. McGraw-Hill: 1998, New York.
- Federal Highway Administration, FHWA Roadway Construction Noise Model User's Guide, FHWA-HEP-05-054, January 2006.
- Federal Highway Administration, "Procedures for Abatement of Highway Traffic Noise and Construction Noise". Code of Federal Regulations, Title 23, Part 772, 1992.
- IEC (International Electromechanical Commission). 61400-11:2002(E) Wind Turbine Generator Systems – Part 11: Acoustic Noise Measurement Techniques, Second Edition 2002-12.
- ISO (International Organization for Standardization). 1989. Standard ISO 9613-2 Acoustics – Attenuation of Sound During Propagation Outdoors. Part 2 General Method of Calculation. Geneva, Switzerland.
- Rogers, Anthony, James Manwell, Sally Wright. 2006. "Wind Turbine Noise – A White Paper," Renewable Energy Research Laboratory, University of Massachusetts at Amherst, June 2002, Amended January 2006.
- Technical Documentation: Wind Turbine Generator Systems GE 1.5 xle – 50Hz and 60Hz, Noise emission characteristics Normal operation according to IEC, GE Wind Energy GmbH, 2007.
- Technical Documentation: Wind Turbine Generator Systems GE 1.6 xle – 50Hz and 60Hz, Noise emission characteristics Normal operation according to IEC, GE Wind Energy GmbH, 2009.
- USEPA (U.S. Environmental Protection Agency). 1974. Information on Levels of Environmental Noise Requisite to Protect the Public Health and Welfare with an Adequate Margin of Safety, Publication EPA-550/9-74-004, March.
- USEPA. 1978. Protective Noise Levels. Condensed Version of EPA Levels Document. Publication EPA-550/9-79-100, November.
- Wagner, S., Bareib, R. and Guidati, G. 1996. Wind Turbine Noise, Springer, Berlin.