

Wilton IV Wind Energy Center Environmental Impact Statement Scoping Meeting Summary

Date: Tuesday, July 26, 2011

Location: Wilton Memorial Hall, Wilton, ND

Attendees: Approximately 50

Meeting Summary

The proposed Wilton IV Wind Energy Center (Project) would connect to a Western Area Power Administration (Western) transmission line. Because of this federal nexus, the Project requires review under the National Environmental Policy Act (NEPA). Western has decided to proceed with an Environmental Impact Statement (EIS) to evaluate the environmental effects of the Project. As part of the NEPA EIS process, a public scoping meeting was held near the proposed Project in Wilton, North Dakota on July 26, 2011. The meeting was held in an open house format from 5:00 pm to 8:00 pm.

Several agencies were invited to the meeting (Appendix 1) and advertisements were placed in the Bismarck Tribune from Monday, July 11 through Wednesday, July 20, 2011 (Appendix 2). The meeting was also included in the public service announcements for the following six radio stations in the Bismarck area from Tuesday, July 19, 2011 through Tuesday, July 26, 2011: KQDY, KFYZ, KBMR, ROCK 101, Y93 and ESPN. Western published a Notice of Intent (NOI) to prepare an EIS in the Federal Register on July 20, 2011 (Appendix 2).

Each attendee was asked to sign in, and was given a Project Fact Sheet and a comment sheet (Appendix 3). Maps displayed throughout the room illustrated the Project boundary (dated July 2011), the turbine layout, and aerial photography base (Appendix 4). A flowchart illustrating the NEPA process and a couple of posters describing the reason for the open house were also displayed (see photos in Appendix 5).

The following people were available to describe the Project and answer questions: Matt Marsh, Mark Wieringa, Western; Scott Scovill, Allen Wynn, Casey Wollschlager, NextEra Energy; Tracey Dubuque, Tetra Tech.

Because the meeting was held as an open house format, there was no formal presentation. Attendees received a Project Fact Sheet and a Comment Sheet (Appendix 3). Attendees were able to walk around the room to review the displays (Appendix 4 and Appendix 5) and discuss the Project with representatives from Western and NextEra Energy. Photos from the meeting are found in Appendix 5.

Appendices

Appendix 1 – Invitations

Appendix 2 – Public Notices

Appendix 3 – Sign in Sheet and Handouts

Appendix 4 – Project Map

Appendix 5 – Photos

Appendix 1 - Invitations

Wilton IV Mailing List

«First Name»	«Last Name»	«Job Title»	«Company/agency»	«Address 1»	«Address 2»	«City»	«State»	«Zip»
John	Fowler	Executive Director	Advisory Council on Historic Preservation	Old Post Office Building, Suite 803	1100 Pennsylvania Avenue, NW	Washington	DC	20004
Brian	Bitner	Chairman	Burleigh County Commission		751 80th St SE	Bismarck	ND	58504
Mark	Armstrong	Commissioner	Burleigh County Commission		618 West Boulevard Avenue	Bismarck	ND	58501
Doug	Schonert	Vice Chairman	Burleigh County Commission		14600 201st Ave NE	Baldwin	ND	58521
Jerry	Woodcox	Commissioner	Burleigh County Commission		449 E Brandon Dr	Bismarck	ND	58503
Jim	Peluso	Commissioner	Burleigh County Commission		6131 Ponderosa Ave	Bismarck	ND	58503
Linn	Berg	Chair	Burleigh County Soil Conservation District		6700 366th Street NE	Sterling	ND	58572
Dale	Coleman	Chairperson of Board of Supervisors	Burleigh County, Crofte Township		PO Box 134	Baldwin	ND	58521
Randy	Schafer	Chairman of Board of Supervisors	Burleigh County, Ecklund Township		1741 292nd Ave NE	Wilton	ND	58579
David	Coleman	Chairperson of Board of Supervisors	Burleigh County, Ghylin Township		25751 158th St NE	Wilton	ND	58579
Dave	Peterson	Chairperson of Board of Supervisors	Burleigh County, Painted Woods Township		7351 292nd Ave NW	Wilton	ND	58579
Rosemary	Hanson	Chairperson of Board of Supervisors	Burleigh County, Rockland Township		24151 223rd St NE	Wing	ND	58494
Ronald	Peck	Mayor	City of Wilton		121 Dakota Avenue	Wilton	ND	58579
Lawrence & Amy	Igl	President	Dakota Prairie Audubon Society		1514 Skyline Lane	Jamestown	ND	58401
Steve	Adair	Regional Director	Ducks Unlimited Great Plains Regional Office		2525 River Road	Bismarck	ND	58503-9011
Jean	Schoenhard	County Executive Director	Farm Service Agency	Burleigh County Farm Service Agency	916 East Interstate Avenue	Bismarck	ND	58503-0548
Barry	Cooper	Regional Administrator	Federal Aviation Administration, Great Lakes Region	O'Hare Lake Office Center	2300 East Devon Avenue	Des Plaines	IL	60018
Steve	Hardegen	Regional Environmental Officer	Federal Emergency Management Agency Region VIII	Environmental & Historic Preservation	Denver Federal Center, Building 710, Box 25267	Denver	CO	80225-0267
Jeff	Wright	Director	Federal Energy Regulatory Commission	Office of Energy Projects	888 First Street, NE	Washington	DC	20426
Wendall	Meyer	Division Administrator	Federal Highway Administration	North Dakota Division	1471 Interstate Loop	Bismarck	ND	58503-0567
Jack	Russel	Acting State Conservationist	Natural Resources Conservation Service	North Dakota State Office	220 East Rosser Ave, Federal Building, Rm 270	Bismarck	ND	58501
Jay	Fuhrer	District Conservationist	Natural Resources Conservation Service	Bismarck Field Office	916 E. Interstate Ave, Suite 6	Bismarck	ND	58503
Doug	Goehring	Agriculture Commissioner	North Dakota Department of Agriculture		600 East Boulevard Avenue, Dept 602	Bismarck	ND	58505-0020
Paul	Lucy	Director	North Dakota Department of Commerce	Economic Development and Finance Division	PO Box 2057	Bismarck	ND	58502-2057
Kevin	Levi	District Engineer	North Dakota Department of Transportation	Bismarck District	218 South Airport Road	Bismarck	ND	58504-6003
Terry	Steinwand	Director	North Dakota Game and Fish Department		100 N. Bismarck Expressway	Bismarck	ND	58501-5095
Jeff	Delzer	Representative	North Dakota House of Representatives	District 8	2919 Fifth Street NW	Underwood	ND	58576-9603
Dwight	Wrangham	Representative	North Dakota House of Representatives	District 8	301 52nd Street SE	Bismarck	ND	58501-8604
Duane	DeKrey	Representative	North Dakota House of Representatives	District 14	4323 27th Street SE	Tappen	ND	58487-9398
Robin	Weisz	Representative	North Dakota House of Representatives	District 14	50 Highway 3 South	Hurdsfield	ND	58451-9009
Scott	Davis	Executive Director	North Dakota Indian Affairs Commission	600 East Boulevard Avenue	1st Floor Judicial Wing, Rm 117	Bismarck	ND	58505
Mark	Zimmerman	Director	North Dakota Parks and Recreation Department		1600 E. Century Ave, Suite 3	Bismarck	ND	58503
Darrell	Nitschke	Executive Secretary	North Dakota Public Service Commission		600 E. Boulevard Avenue, Dept 408	Bismarck	ND	58505-0480
Fern	Swenson	Deputy State Historic Preservation Officer	North Dakota State Historic Preservation Office					
Lance	Gaebe	Land Commissioner	North Dakota State Land Department	1707 North 9th Street	PO Box 5523	Bismarck	ND	58506-5523
Jack	Dalrymple	Governor	Office of the Governor		600 East Boulevard Avenue	Bismarck	ND	58505-0001
Blaine	Nordwall	Chairperson	Pheasants Forever, Inc.	Chapter #47 - Burleigh County	1783 Buerkle Circle	St. Paul	MN	55110
			Sierra Club	North Dakota Office	311 East Thayer Ave, Suite 113	Bismarck	ND	58501
Merlan	Paaverud, Jr.	Director	State Historic Society of North Dakota	State Historic Preservation Office	612 East Boulevard Avenue	Bismarck	ND	58505
Bob	Paulson	Western Dakotas Program Director	The Nature Conservancy		822 Main Street	Rapid City	SD	57701
Daniel	Cimarosti	Regulatory Program Manager	U.S. Army Corps of Engineers, Omaha District	ND Regulatory Office	1513 South 12th Street	Bismarck	ND	58504-6640
Matthew	Ponish	National Environmental Compliance	U.S. Department of Agriculture		1400 Independence Ave., SW STOP 0513	Washington	DC	20250
Willie	Taylor, Ph.D.	Director	U.S. Department of the Interior	Office of Environmental Policy and Compliance	1849 C Street, NW MS 2462	Washington	DC	20240
Larry	Svoboda	Director	U.S. Environmental Protection Agency	NEPA Program	1595 Wynkoop St., 8EPR-N Mail Code	Denver	CO	80202-1129
James	Martin	Regional Administrator	U.S. Environmental Protection Agency, Region 8		1595 Wynkoop St., 8EPR-N Mail Code	Denver	CO	80202-1129
Jeff	Towner	Field Supervisor	U.S. Fish & Wildlife Service	North Dakota Field Office	3425 Miriam Avenue	Bismarck	ND	58501-7926
Ed	Meendering	Wetland Manager	U.S. Fish & Wildlife Service	Long Lake Wetland Management District	12000 353rd St. SE	Moffit	ND	58560-9704
Max	Ethridge	Acting Central Regional Director	U.S. Geological Survey	Central Region	Denver Federal Center, Building 810, Mail Stop 150	Denver	CO	80225-0046
Rick	Berg	Congressman	United States House of Representatives	220 East Rosser Avenue	328 Federal Building	Bismarck	ND	58501
Kent	Conrad	U.S. Senator	United States Senate		530 Hart Senate Office Building	Washington	DC	20510
John	Hoeven	U.S. Senator	United States Senate		120 Russel Senate Office Building	Washington	DC	20510
Craig	Johnson	Superintendent	Wilton School District		PO Box 249	Wilton	ND	58579

Appendix 2 – Public Notices

was preferred over other alternatives because it represented the best capacity for meeting current and reasonably foreseeable national security requirements.

Comment 9. The Y-12 Final SWEIS wrongly declares that the demolition/disposal of existing facilities arising from relocation of operations to a new UPF is "not ripe."

Response. The Integrated Facility Disposition Program (IFDP) is DOE's program for disposing of legacy materials and facilities at the Oak Ridge National Laboratory (ORNL) and Y-12. The IFDP includes both existing excess facilities (e.g., facilities not required for DOE's needs or the discharge of its responsibilities) and newly identified excess (or soon to be excess) facilities. Under the IFDP, the decontamination and decommissioning (D&D) of approximately 188 facilities at ORNL, 112 facilities at Y-12, and remediation of soil and groundwater contamination would occur over the next 30 to 40 years. The IFDP will be conducted as a remedial action under the *Comprehensive Environmental Response, Compensation, and Liability Act* (CERCLA). Cleanup and D&D activities conducted under CERCLA are reviewed through the CERCLA process, which incorporates NEPA values. The potential impacts of the IFDP are analyzed in the cumulative impacts section of the SWEIS in chapter 6 (See comment-response 12.P on page 3-44 of Volume II of the Y-12 Final SWEIS). Although IFDP D&D activities are expected to commence within the next three to five years, the major IFDP D&D activities would not take place for many years (e.g., most likely any D&D activities associated with the action alternatives in this SWEIS would not take place prior to approximately 2018). These major D&D activities are to be resolved under the provisions of CERCLA and are beyond the planning basis for this SWEIS (See Section 5.16 on page 5-100 of Volume I of the Y-12 Final SWEIS). NNSA believes that the Y-12 Final SWEIS includes an analysis of all reasonable alternatives and all cleanup/waste management actions that are required to be included in a NEPA analysis.

Comment 10. The Tennessee Division of Radiological Health is not listed as a consulting agency. They should be given an opportunity, and time, to comment on the Y-12 Final SWEIS before any ROD is issued.

Response. During the Y-12 SWEIS process, NNSA specifically invited TDEC to be a cooperating agency in the preparation of the SWEIS and also requested that other agencies express their interest in being designated as a cooperating agency in the preparation of the Y-12 SWEIS (see 70 FR 71270, November 28, 2005). The Tennessee Division of Radiological Health is part of TDEC. TDEC comments on the Draft Y-12 SWEIS are contained on page 2-123 of Volume II of the Y-12 Final SWEIS.

Comment 11. Commentors stated that an article in the Knoxville News-Sentinel on March 31, 2011, casts new light on the seismic conditions of current facilities and underscores OREPA's concerns, first raised in 1994 and repeatedly in the succeeding years, about the structural integrity of

facilities at Y-12 including building 9212. The Y-12 Final SWEIS does not include a thorough assessment of risks associated with ongoing operations at Y-12 in the "No Action Alternative," and provides an inadequate evaluation in its accident scenarios.

Response. The Y-12 Final SWEIS considers potential impacts that could be caused by earthquakes and other natural phenomena such as wind, rain/snow, tornadoes and lightning (see Section D.9). Criticality is also considered. Table D.9.3-1 identifies the accidents that were considered for the major operations at Y-12. As shown in that table, the SWEIS considered potential impacts from earthquakes and other natural phenomena, including wind, flood, and lightning. The impacts associated with accidents analyzed in detail for the Y-12 Final SWEIS bound any impacts that would be associated with earthquakes and other natural phenomena. This is due to the fact that the accidents analyzed in detail in the SWEIS would be expected to result in greater radiological releases than reasonably foreseeable accidents caused by natural phenomena at Y-12.

With respect to potential accidents associated with existing/old facilities, as discussed in Section 5.14.1.1, the Y-12 Final SWEIS accident analysis process began with a review of all Y-12 facilities, including Building 9212, with emphasis on building hazard classification, radionuclide inventories, including type, quantity, and physical form, and storage and use conditions. For each of these facilities, the next step was to identify the most current documentation describing and quantifying the risks associated with its operation. Current safety documentation was obtained for all of these facilities. From these documents, potential accident scenarios and source terms (release rates and frequencies) associated with those facilities were identified. (See comment-response 12.M.1 on page 3-39 of Volume II of the Y-12 Final SWEIS).

[FR Doc. 2011-18312 Filed 7-19-11; 8:45 am]

BILLING CODE 6450-01-P

DEPARTMENT OF ENERGY

Western Area Power Administration

[DOE/EIS-0469]

Notice of Intent To Prepare an Environmental Impact Statement and to Conduct Scoping Meetings; Proposed Wilton IV Wind Energy Center Project, North Dakota

AGENCY: Western Area Power Administration, DOE.

ACTION: Notice.

SUMMARY: NextEra Energy Resources (NextEra) applied to interconnect its proposed 99-megawatt (MW) Wilton IV Wind Energy Center Project (Project) with Western Area Power Administration's (Western) existing

Hilken Switching Station in Burleigh County, North Dakota. The proposed Project would consist of up to 62 1.6-MW wind turbine generators and associated infrastructure located across approximately 15,725 acres of land in Burleigh County, about 20 miles north of Bismarck. In addition to constructing and operating the above proposed Project, NextEra has requested to operate its nearby existing Wilton I (also known as Burleigh), Wilton II, and Baldwin Wind Energy Center projects at levels exceeding 50 average annual MW, when wind conditions warrant. Western will prepare an environmental impact statement (EIS) on NextEra's proposal to interconnect their Project and to operate its existing projects above 50 average annual MW in accordance with the National Environmental Protection Act (NEPA), U.S. Department of Energy (DOE) NEPA Implementing Procedures, and the Council on Environmental Quality (CEQ) regulations for implementing NEPA. Portions of NextEra's proposed Project may affect floodplains and wetlands, so this Notice of Intent (NOI) also serves as a notice of proposed floodplain or wetland action in accordance with DOE floodplain and wetland environmental review requirements.

DATES: A public scoping meeting will be held on July 26, 2011, from 5 to 8 p.m. in Wilton, North Dakota. Local notification of this meeting has been made through direct mailings to affected parties and by advertising in local media to ensure at least 15 days of prior notice. The public scoping period starts with the publication of this notice and ends on September 6, 2011. Western will consider all comments on the scope of the EIS received or postmarked by that date. The public is invited to submit comments on the proposed Project at any time during the EIS process.

ADDRESSES: Western will host a public scoping meeting at the Wilton Memorial Hall, 105 Dover Avenue, Wilton, North Dakota, to provide information on the Project and gather comments on the proposal. Oral or written comments may be provided at the public scoping meeting or mailed or e-mailed to Matt Marsh, Upper Great Plains Regional Office, Western Area Power Administration, P.O. Box 35800, Billings, MT 59107-5800, e-mail MMarsh@wapa.gov, telephone (800) 358-3415.

FOR FURTHER INFORMATION CONTACT: For additional information on the proposed Project, the EIS process, or to receive a copy of the Draft EIS when it is published, contact Matt Marsh at the

addresses above. For general information on the DOE's NEPA review process, contact Carol M. Borgstrom, Director of NEPA Policy and Compliance, GC-54, U.S. Department of Energy, 1000 Independence Avenue, SW., Washington, DC 20585-0119, telephone (202) 586-4600 or (800) 472-2756, facsimile (202) 586-7031.

SUPPLEMENTARY INFORMATION: Western is a Federal power marketing agency within the DOE that markets and delivers Federal wholesale electric power (principally hydroelectric power) to municipalities, rural electric cooperatives, public utilities, irrigation districts, Federal and State agencies, and Native American tribes in 15 western and central states. NextEra's proposed Project would be located within Western's Upper Great Plains Region, which operates in North and South Dakota, most of Montana, and portions of Iowa, Minnesota, and Nebraska. Western will prepare an EIS on NextEra's application to interconnect their proposed Wilton IV Wind Project and their proposal to operate its three existing projects above 50 average annual MW, when feasible, in accordance with NEPA (42 U.S.C. 4321-4347); DOE NEPA Implementing Procedures (10 CFR part 1021), and the CEQ regulations for implementing NEPA (40 CFR Parts 1500-1508).¹ Projects generating more than 50 average annual MW normally require the preparation of an EIS under DOE NEPA regulations.

Western will coordinate with appropriate Federal, State, and local agencies and potentially affected Native American tribes during the preparation of the EIS. While there are no designated cooperating agencies at this time, cooperating agencies could be identified at a later date.

Purpose and Need for Agency Action

Western's need for agency action is precipitated by NextEra's application to interconnect its proposed Wilton IV Wind Project with Western's power transmission system, and its intention of operating the three existing wind energy center projects at a level exceeding 50 average annual MW. Western needs to consider NextEra's interconnection request under Western's Open Access Transmission Service Tariff (Tariff), which provides for interconnection to its transmission system if there is available transmission capacity.

This EIS will address Western's Federal action of interconnecting NextEra's proposed Project with its Hilken Switching Station. As part of its normal interconnection analysis, Western determines if any changes within the substation or any system modifications are needed to accommodate the interconnection. In this case the physical interconnection is already in place and operating at Hilken, and preliminary studies indicate that the power system can accommodate the proposed interconnection without negatively affecting system reliability or power deliveries to existing customers. However, final system studies could still determine that network and/or transmission system upgrades are required. Any such upgrades would be funded by NextEra as a condition of the interconnection.

NextEra's proposal to operate the existing Wilton I, Wilton II, and Baldwin Wind Energy Center projects at levels exceeding 50 average annual MW creates the need for Western to revisit the interconnection agreements prepared for each of these projects. Projects generating over 50 average annual MW normally require the preparation of an EIS under DOE NEPA regulations, and the existing interconnection agreements call for curtailing generation, or completing an EIS prior to generating above that cap. None of the environmental assessments² originally prepared for these projects identified potential significant impacts resulting from the construction, operation, and maintenance of the three wind energy projects.

Proposed Action

In compliance with the provisions of the Tariff, and considering the environmental impacts of NextEra's proposed Project as identified by the EIS process, Western will consider NextEra's interconnection request. If approved, any necessary system changes would be made to accomplish the interconnection, and power generated by the proposed Project would use Western's transmission system to reach the market. Western will contact the U.S. Fish and Wildlife Service under section 7 of the Endangered Species Act and the North Dakota State Historic Preservation Office under section 106 of the National Historic Preservation Act. Section 7 and 106 consultations were

completed in 2010 on some of the proposed wind turbine locations as part of the Baldwin project, and additional coordination with these agencies will build off of these previous consultations.

Alternatives

Western must respond to NextEra's proposed Project as it is described in their application for interconnection, and make a decision on the interconnection request based on that application. NextEra's interconnection request essentially results in an increase in the amount of power entering Western's transmission system through existing facilities; no physical modifications to Western's facilities or the transmission system are anticipated at this time. Under the no action alternative, Western would not approve the interconnection request, and NextEra would not be able to export the generation from its proposed Project over Western's transmission system.

The current interconnection agreements for the Wilton I, Wilton II, and Baldwin Wind Energy Center projects contain language that prevent these projects from exceeding 50 average annual MW. Western would remove this language under the proposed action. Under the no action alternative, the existing language would remain in force, and NextEra would be unable to operate any of these three projects above the 50 average annual MW cap.

Applicant's Proposed Project

NextEra proposes to construct 62 1.6-MW wind turbine generators in Crofte, Ecklund, Ghylin, Painted Woods, and Rocky Hill townships in Burleigh County, North Dakota, approximately 20 miles north of Bismarck. Each turbine would be up to 426 feet tall from tip of blade to base, and about 260 feet tall from the ground to the hub. The three-bladed rotors would have a diameter of approximately 328 feet, or 100 meters. The proposed Project would also include all-weather access roads to each turbine location, and underground power collection lines linking the turbines to Central Power Electric Cooperative's existing 4.4-mile 230-kilovolt (kV) generation tie-line that terminates at Western's Hilken Switching Station. The Western interconnection point for NextEra's proposed Project would be at the Hilken Switchyard. The Hilken Switching Station is located on Western's Garrison—Bismarck 230-kV transmission line.

NextEra's proposed Project would be an expansion of its three existing wind

¹ On October 4, 1999, DOE's Assistant Secretary for Environmental, Safety and Health delegated to Western's Administrator the authority to approve EISs for integrating transmission facilities with Western's transmission grid.

² Burleigh County Wind Energy Center, Burleigh County, North Dakota [Wilton I], DOE/EA-1542, 2006; EA Supplement to DOE/EA-1542 [Wilton II], 2009; Baldwin Wind Energy Center Project, Burleigh County, North Dakota, DOE/EA-1698, 2010.

energy projects in the area. Of the 62 proposed Wilton IV Wind Project wind turbines, 37 are located in a 10,000-acre area within Crofte Township, adjacent to and immediately to the west of NextEra's existing wind energy projects. These 37 wind turbine sites were considered as alternate locations for the Baldwin Project, and were analyzed for potential environmental impacts in the Baldwin environmental assessment. The wind turbines would be arrayed in several strings, generally oriented southwest to northeast, in an area roughly six miles square. Cultural resources and biological resources field surveys were accomplished for these wind turbine locations during the NEPA process for the Baldwin Project, which was completed in 2010. The remaining 25 wind turbines would be located in Ecklund, Ghylin, Painted Woods, and Rocky Hill townships within a 5,725-acre area. These turbine strings would be generally oriented east to west over approximately 4 miles immediately east of NextEra's existing wind energy projects. The potential environmental impacts of these 25 turbines will be analyzed as part of this EIS, and cultural and biological surveys will be conducted on these sites and any other potentially disturbed areas not already included in the Baldwin environmental assessment.

The proposed Project would generate about 99 nameplate MW on the two separate areas totaling approximately 15,725 acres. The proposed wind energy project would be located entirely on private lands; no Federal or State land would be affected.

In addition to constructing and operating the proposed Project as described above, NextEra has requested to operate its nearby existing Wilton I, Wilton II, and Baldwin Wind Energy Center projects at levels exceeding 50 average annual MW, when wind conditions warrant. Projects generating more than 50 average annual MW normally require the preparation of an EIS under DOE NEPA regulations (10 CFR Part 1021). These projects were originally analyzed in environmental assessments based in part on their anticipated output being under 50 average annual MW, and the interconnection agreements include a cap at that generation level unless an EIS is prepared. NextEra now believes that wind conditions may allow operation of the three wind projects above 50 average annual MW, and would like to generate above the cap, if possible. NextEra's proposal to potentially operate above the 50 average annual MW level creates the need for Western to revisit the existing

interconnection agreements that include this limitation. No physical modifications to the existing wind generation projects are proposed; the requested interconnection agreement amendments would simply allow for more hours of generation if wind conditions are favorable but still within the stated nameplate capacity.

Western's Federal action is to consider the interconnection request, any resultant impact to the transmission system, and the change in operating parameters for the other three existing projects; however, the EIS will also identify and review the environmental impacts of constructing, operating, maintaining, and decommissioning NextEra's proposed Wilton IV Project. NextEra would be responsible for completing necessary coordination with State and local agencies to permit its proposed Project.

Floodplain or Wetland Involvement

Floodplains and wetlands are common in this part of North Dakota. Since the proposed Project may involve action in floodplains or wetlands, this NOI also serves as a notice of proposed floodplain or wetland action. The EIS will include an assessment of impacts to floodplains and wetlands, and floodplain statement of findings following DOE regulations for compliance with floodplain and wetlands environmental review (10 CFR Part 1022).

Environmental Issues

The location of NextEra's proposed Project is in a relatively sparsely populated portion of southcentral North Dakota. The area is characterized by extensive agriculture and pasture with scattered farmsteads on section line roads. NextEra has secured leases with willing landowners for its wind generation turbines and related facilities. Available overview information and the results of the NEPA analyses on the existing three wind projects indicates this area has a relatively low probability of substantial natural resources conflicts. NextEra's siting process for the wind turbine strings and associated facilities considered sensitive resources, and the proposed Project was designed to avoid these areas. The EIS will review the environmental information collected on the Project area, including that already collected as part of the Baldwin project, and evaluate the level of impact the interconnection and NextEra's proposed Project would have on environmental resources within the approximately 15,725-acre site. Modifications to NextEra's proposed Project may be

made to avoid or minimize resource impacts. While no substantive resource conflicts have been identified thus far, the EIS will analyze the potential impacts on the full range of potentially affected environmental resources. Wind farm projects are generally known to have visual and noise effects, and may affect birds and bats.

Public Participation

Interested parties are invited to participate in the scoping process to help define the scope of the EIS, significant resources, and issues to be analyzed in depth, and to eliminate from detailed study issues that are not pertinent. The scoping process will involve all interested agencies (Federal, State, county, and local), Native American tribes, public interest groups, businesses, affected landowners, and individual members of the public.

Western has previously consulted with potentially affected or interested tribes to jointly evaluate and address the potential effects on cultural resources, traditional cultural properties, or other resources important to the tribes in the proposed Project area. Western will contact previously identified interested tribes and inform them that NextEra now intends to expand its wind energy projects in this area. Any nation-to-nation consultations will be conducted in accordance with Executive Order 13175, Consultation and Coordination with Indian Tribal Governments (65 FR 67249), the President's memorandum of April 29, 1994, Government-to-Government Relations with Native American Tribal Governments (59 FR 22951), DOE-specific guidance on tribal interactions, and applicable natural and cultural resources laws and regulations.

A public scoping meeting will be held as described under **DATES** and **ADDRESSES** above. The meeting will be informal, and attendees will be able to speak directly with Western and NextEra representatives about the proposed Project. The public is encouraged to provide information and comments on issues it believes Western should address in the EIS. Comments may be broad in nature or restricted to specific areas of concern. After gathering comments on the scope of the EIS, Western will address those issues raised in the EIS. Comments on Western's proposed action and NextEra's proposed Project will be accepted at any time during the EIS process, and may be directed to Western as described under **ADDRESSES** above.

Western's EIS process will include this NOI and public scoping meetings; consultation and coordination with appropriate Federal, State, county, and

local agencies and tribal governments; involvement with affected landowners; distribution of and public review and comment on the Draft EIS; a formal public hearing or hearings on the Draft EIS; distribution of a published Final EIS; and publication of Western's Record of Decision in the **Federal Register**.

Dated: July 7, 2011.

Timothy J. Meeks,
Administrator.

[FR Doc. 2011-17997 Filed 7-19-11; 8:45 am]

BILLING CODE 6450-01-P

ENVIRONMENTAL PROTECTION AGENCY

[EPA-HQ-OPPT-2011-0566; FRL-8881-3]

Certain New Chemicals; Receipt and Status Information

AGENCY: Environmental Protection Agency (EPA).

ACTION: Notice.

SUMMARY: Section 5 of the Toxic Substances Control Act (TSCA) requires any person who intends to manufacture (defined by statute to include import) a new chemical (i.e., a chemical not on the TSCA Chemical Substances Inventory (TSCA Inventory)) to notify EPA and comply with the statutory provisions pertaining to the manufacture of new chemicals. Under TSCA sections 5(d)(2) and 5(d)(3), EPA is required to publish in the **Federal Register** a notice of receipt of a premanufacture notice (PMN) or an application for a test marketing exemption (TME), and to publish in the **Federal Register** periodic status reports on the new chemicals under review and the receipt of notices of commencement (NOC) to manufacture those chemicals. This document, which covers the period from May 23, 2011 to June 5, 2011, and provides the required notice and status report, consists of the PMNs and TMEs, both pending or expired, and the NOC to manufacture a new chemical that the Agency has received under TSCA section 5 during this time period.

DATES: Comments identified by the specific PMN number or TME number, must be received on or before August 19, 2011.

ADDRESSES: Submit your comments, identified by docket identification (ID) number EPA-HQ-OPPT-2011-0566, and the specific PMN number or TME number for the chemical related to your comment, by one of the following methods:

- **Federal eRulemaking Portal:** <http://www.regulations.gov>. Follow the on-line instructions for submitting comments.

- **Mail:** Document Control Office (7407M), Office of Pollution Prevention and Toxics (OPPT), Environmental Protection Agency, 1200 Pennsylvania Ave., NW., Washington, DC 20460-0001.

- **Hand Delivery:** OPPT Document Control Office (DCO), EPA East Bldg., Rm. 6428, 1201 Constitution Ave., NW., Washington, DC. The DCO is open from 8 a.m. to 4 p.m., Monday through Friday, excluding legal holidays. The telephone number for the DCO is (202) 564-8930. Such deliveries are only accepted during the DCO's normal hours of operation, and special arrangements should be made for deliveries of boxed information.

Instructions: EPA's policy is that all comments received will be included in the docket without change and may be made available on-line at <http://www.regulations.gov>, including any personal information provided, unless the comment includes information claimed to be Confidential Business Information (CBI) or other information whose disclosure is restricted by statute. Do not submit information that you consider to be CBI or otherwise protected through www.regulations.gov or e-mail. The www.regulations.gov Web site is an "anonymous access" system, which means EPA will not know your identity or contact information unless you provide it in the body of your comment. If you send an e-mail comment directly to EPA without going through www.regulations.gov, your e-mail address will be automatically captured and included as part of the comment that is placed in the docket and made available on the Internet. If you submit an electronic comment, EPA recommends that you include your name and other contact information in the body of your comment and with any disk or CD-ROM you submit. If EPA cannot read your comment due to technical difficulties and cannot contact you for clarification, EPA may not be able to consider your comment. Electronic files should avoid the use of special characters, any form of encryption, and be free of any defects or viruses.

Docket: All documents in the docket are listed in the docket index available at <http://www.regulations.gov>. Although listed in the index, some information is not publicly available, e.g., CBI or other information whose disclosure is restricted by statute. Certain other material, such as copyrighted material, will be publicly available only in hard copy. Publicly available docket materials are available electronically at

<http://www.regulations.gov>, or, if only available in hard copy, at the OPPT Docket. The OPPT Docket is located in the EPA Docket Center (EPA/DC) at Rm. 3334, EPA West Bldg., 1301 Constitution Ave., NW., Washington, DC. The EPA/DC Public Reading Room hours of operation are 8:30 a.m. to 4:30 p.m., Monday through Friday, excluding legal holidays. The telephone number of the EPA/DC Public Reading Room is (202) 566-1744, and the telephone number for the OPPT Docket is (202) 566-0280. Docket visitors are required to show photographic identification, pass through a metal detector, and sign the EPA visitor log. All visitor bags are processed through an X-ray machine and subject to search. Visitors will be provided an EPA/DC badge that must be visible at all times in the building and returned upon departure.

FOR FURTHER INFORMATION CONTACT: For technical information contact: Bernice Mudd, Information Management Division (7407M), Office of Pollution Prevention and Toxics, Environmental Protection Agency, 1200 Pennsylvania Ave., NW., Washington, DC 20460-0001; telephone number: (202) 564-8951; fax number: (202) 564-8955; e-mail address: mudd.bernice@epa.gov.

For general information contact: The TSCA-Hotline, ABVI-Goodwill, 422 South Clinton Ave., Rochester, NY 14620; telephone number: (202) 554-1404; e-mail address: TSCA-Hotline@epa.gov.

SUPPLEMENTARY INFORMATION:

I. General Information

A. Does this Action Apply to Me?

This action is directed to the public in general. As such, the Agency has not attempted to describe the specific entities that this action may apply to. Although others may be affected, this action applies directly to the submitter of the PMNs addressed in this action. If you have any questions regarding the applicability of this action to a particular entity, consult the person listed under **FOR FURTHER INFORMATION CONTACT**.

B. What Should I Consider as I Prepare My Comments for EPA?

1. **Submitting CBI.** Do not submit this information to EPA through www.regulations.gov or e-mail. Clearly mark the part or all of the information that you claim to be CBI. For CBI information in a disk or CD-ROM that you mail to EPA, mark the outside of the disk or CD-ROM as CBI and then identify electronically within the disk or CD-ROM the specific information that is claimed as CBI. In addition to one

Kit 'n' Carlyle
 www.gocomics.com
 www.kitncarlyle.com

7-11
 Distributed by Universal Uclick for UFS

402 Agriculture/ Farm Equipment
 Rowse Hay Rake
 24' whitc, hydraulic
 222-1902 Evenings



WC ALLIS Chalmers, new paint & tires, runs great! \$2350. Call 701-400-7701



WD 45 Allis Chalmers, good running tractor, 3 pt hitch, \$2950.00. Call 701-400-7701

406 Horses/ Supplies
FLYING D ARENA HORSE BOARDING
 Heated indoor facility w/outdoor pens & plenty of trails to ride! Riding Lessons, trainer, roping weekly & professionally staffed. 701-221-2433



408 Seed/Feed/Hay
 HAY WANTED: Large Square bales Alfalfa Hay. Large Quantities. \$\$ up front, top dollar. will pickup on your farm. 308-991-3432

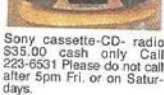
452 Free Stuff
 3 TYPEWRITERS from early 60's. One manual, two electric. 701-221-0502.
 GIVE-A-WAY: GOOD condition RETRO 70's couch, end tables, 8 track stereo console. 701-516-3768
 KITCHEN SINK cut outs and scrap plywood. Call 701-426-6803.
 OLD UPRIGHT Bush & Gertz piano beautiful sound. Call 701-426-1233

458 Antiques/ Collectibles
 1978 CORVETTE Go Cart, Official Drexel-Chicago. Call 701-426-1233

468 Cameras/ TVs/VCRs
 NEW RCA Analog to Digital TV Converter: Universal Remote, watch HD broadcast channels on old TV's. First \$50 Cash... 255-1351



470 Electronics
 Sony cassette-CD- radio \$35.00 cash only Call 223-8531 Please do not call after 5pm Fri. or on Saturdays.



474 Household Items/Furniture
 BED: QUEEN size mattress & box brand new, still in plastic, never used \$175. Also brand new King PT set \$395. Call 221-9011 or 400-9157.



478 Pets/Supplies
 4 year old male neutered cat for giveaway! Oreo needs a home. I'm allergic and can't have him anymore. Loves to sit and talk. More of an adult person type cat, but loves kids! 100 Please call 223-1531, leave message if not home.



CAVALIER PUPPIES, Reg. \$500. Ready. 701-212-2030 www.ridgeviewkennels.com
 For Giveaway: Male, neutered, tricolored 6yr old Cavalier spaniel, great with kids and adults. Call 202-5175



Give-a-way: 2 F Beagles, found 2 wks ago. Need a good home, must go together. 701-597-3243, iv msg.
 Give-a-way: Cross female dog, to a good home. "Jenny" Spayed 2 yrs old, approx. 60lb., includes dog-house. Call after 5pm 391-3110, or 202-4497



LOST! MALE Shih Tzu on 7-4-11 in NE Bismarck off 5th & 6th. Asking \$68. Call 226-1114.

490 Sporting Goods
 2 ladies golf bags-both with club dividers and putter holder. Very good condition. 223-1943 \$50 for both.

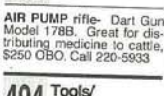


EZ-GO GOLF Car Dealer. Full service, parts & Trojan batteries, new/used, electric, gas & utility vehicles in stock. JR Repair, Inc. Garrison, ND 701-463-2054 or 337-6000



Used Golf Cars! Yamaha, EZ Go & Club Car. Gas or Electric. Financing Available. We take trades! See our inventory and pics at webergofcars.com
 Jim Weber Ford 701-452-4288 Cell 701-226-6360 Wishek, ND.

492 Guns
 AIR PUMP rifle- Dart Gun Model 178B. Great for distributing medicine to cattle, \$250 OBO. Call 220-5933



494 Tools/ Machinery

518 Announcements
CHAP. 7/13 BANKRUPTCY COLES LAW FIRM
 Over 30 yrs exp. We are a Debt Relief Agency. We help people file for Bankruptcy Relief under the Bankruptcy Code. Flat fee in most cases. Call 701-222-8131 coleslaw@btinet.net



Criminal Defense Injuries/Accidents
 *Free Initial Consultation In All Cases

Bolinske Law Firm
 Robert V. Bolinske, Jr.
 Learn more at: bolinskelawfirm.com
255-3410
 Thousand of cases successfully resolved

Criminal Defense Injuries/Accidents
 *Free Initial Consultation In All Cases

Bolinske Law Firm
 Robert V. Bolinske, Jr.
 Learn more at: bolinskelawfirm.com
255-3410
 Thousand of cases successfully resolved

520 Lost
 Call 701-280-0759

552 Money to Lend
 A simple reminder: Just as it is important to use caution when replying to suspicious offers in email or on the phone, you should also use caution when replying to classified advertisements that require advance payment. The North Dakota Attorney General's Consumer Protection Division is available to offer assistance and answer questions if you think an offer or company is questionable. If you have any questions, you can reach them at 701-328-3404 or 1-800-472-2600.



Rentals
602-646
608 Central Bismarck Apartments FR
 HUD SUBSIDIZED 1 bdrm. apts avail for senior citizens with low & moderate income. Call Patterson Place Apts 701-255-6057.

610 NE Bismarck Apartments FR
 2 BDRM, private entry, off-street parking. Call 223-8588

NICE USED MOBILE HOMES FOR RENT.
 Call 663-9219 or 391-0633

642 Office/Business Space FR
 Professional Building 5th & Rosser ph. 258-4000

Equal Housing Opportunity
 In accordance with the federal Fair Housing Act, we do not accept for publication any real estate listing that indicates any preference, limitation, or discrimination based on race, color, religion, sex, disability, family status, or national origin. If you believe a published listing states such a preference, limitation, or discrimination, please notify this publication at fairhousing@lee.net.

Equal Housing Opportunity
 In accordance with the federal Fair Housing Act, we do not accept for publication any real estate listing that indicates any preference, limitation, or discrimination based on race, color, religion, sex, disability, family status, or national origin. If you believe a published listing states such a preference, limitation, or discrimination, please notify this publication at fairhousing@lee.net.

- ACROSS**
 1 Jetty
 5 Monsieur's wine
 8 "Ben-Hur" studio
 11 Coat rack
 12 Boulevard liners
 14 Job-ad letters
 15 Lee of cake-
 16 Get dizzy
 17 Large vat
 18 Parliament members
 20 "Kubla Khan"
- DOWN**
 3 Potpie veggie
 4 Greeted warmly
 6 Scratchy
 9 Ms. Longoria
 10 Cut, as logs
 13 Hull bottom
 16 Journey stage
 19 Horse's gait
 21 Thus
 22 --game show
 23 Afternoon social
 24 Hounds

Answer to Previous Puzzle

G	A	S	F	A	S	T	J	U	N	K
A	L	E	E	L	S	E	E	L	I	E
D	O	C	T	R	I	N	E	A	N	N
S	U	T	U	R	E	M	I	L	A	N
B	A	N	S	N	O	S	Y			
R	I	P	E	R	K	U	D			
O	R	E	I	S	A	K	S	A	N	D
T	A	C	O	R	T	E	S	L	T	D
B	R	I	E	L	A	T	H	S		
W	I	L	I	D	R	O	P			
A	D	I	E	U	O	P	P	O	S	E
S	T	A	G	H	E	S	I	T	A	N
A	C	H	E	O	D	I	N	K	I	T
M	H	O	S		H	O	N	G	S	P

NASA (Word)
39 Jell (Word)

3	4	9	6	8					
9		7						6	
		5	4	1				9	2
6		3	5	8				9	
7								5	3
3								6	

Solution to last Sudoku puzzle

5	8	1	4	6	3	7	9	2
7	9	2	5	8	1	4	6	3
4	6	3	7	9	2	5	8	1
1	5	8	3	2	4	6	7	9
6	4	7	1	5	9	3	2	8
3	2	9	6	7	6	1	5	4
9	1	5	6	3	8	2	4	7
8	7	4	2	1	5	9	3	6
2	3	6	9	4	7	8	1	5

Solution, tips and computer program at www.krazydad.com/sudoku/
 © Puzzles by Krazydad.com

The Bismarck Tribune
 www.bismarcktribune.com

Wednesday
 More Intermediate Puzzle
Thursday
 Challenging Puzzle
Friday
 Tough Puzzle
Saturday
 Super Tough Puzzle
Sunday
 More Easy Puzzle

We need your input!

We need your comments to help us define the scope and alternatives for an environmental impact statement on a proposal by NextEra Energy Resources to expand its wind energy facilities in Burleigh County, southeast of Wilton, and northeast of Baldwin, North Dakota. The proposed Wilton IV Wind Energy Center will include up to 62 wind turbine generators, an underground power collection system, and access roads. Construction of the Wilton IV Wind Energy Center is proposed to begin in Summer 2012.

Western Area Power Administration will host a public scoping meeting to help define the scope of the Wilton IV Wind Energy Center Environmental Impact Statement. The meeting location is handicapped accessible.

Please join us to learn more about this project and to share your ideas:
 5 to 8 pm, Tuesday, July 26, 2011
 Wilton Memorial Hall
 105 Dover Avenue, Wilton, ND 58579

Need more info?
 For more information or to be added to the project mailing list, contact:
Matt Marsh, Environmental Protection Specialist
 Western Area Power Administration
 PO Box 35800, Billings, MT 59107-5800
 Phone: 1-800-358-3415, Fax: (406) 255-2900
 Email: mmarsh@wapa.gov

Wilton IV Wind Energy Center Scoping Meeting Radio Ad

Western Area Power Administration will host a public scoping meeting to help define the scope of an Environmental Impact Statement for the Wilton IV Wind Energy Center.

The proposed project is an expansion of an existing facility in Burleigh County and will include 62 wind turbine generators, an underground power collection system, and access roads. Construction of the project is proposed to begin in Summer 2012.

The meeting will be held on Tuesday, July 26th from 5 to 8 PM at the Wilton Memorial Hall.

Appendix 3 – Sign in Sheet and Handouts

Wilton IV Wind Energy Center Open House

July 26, 2011, 5-8 PM Wilton Memorial Hall

Please Print Clearly

SIGN IN SHEET

NAME	ADDRESS	POSTAL CODE	PHONE #	ADD TO MAILING LIST	
Toby Sheldon	Confidential Information			YES	NO
Gerald & Arlis Walt				YES	NO
MARC LAURIE				YES	NO
Boy Wald				YES	NO
				YES	NO
				YES	NO
				YES	NO
				YES	NO
				YES	NO

Wilton IV Wind Energy Center Open House

July 26, 2011, 5-8 PM Wilton Memorial Hall

Please Print Clearly

SIGN IN SHEET

NAME	ADDRESS	POSTAL CODE	PHONE #	ADD TO MAILING LIST	
Edwin & Donna Whatham	Confidential Information			<input checked="" type="checkbox"/> YES	<input type="checkbox"/> NO
Watson Johnson Ruth Johnson				<input checked="" type="checkbox"/> YES	<input type="checkbox"/> NO
John & Janet				<input checked="" type="checkbox"/> YES	<input type="checkbox"/> NO
Wilhelm O. Meyer				<input checked="" type="checkbox"/> YES	<input type="checkbox"/> NO
Chris Frutke Harvard Frutke				<input checked="" type="checkbox"/> YES	<input type="checkbox"/> NO
Karyn & Debbie Pearson				<input checked="" type="checkbox"/> YES	<input type="checkbox"/> NO
Maui & Colman				<input checked="" type="checkbox"/> YES	<input type="checkbox"/> NO
Terry Vesey				<input checked="" type="checkbox"/> YES	<input type="checkbox"/> NO
Gene and Vivian Hill Ken				<input checked="" type="checkbox"/> YES	<input type="checkbox"/> NO

Wilton IV Wind Energy Center Open House

July 26, 2011, 5-8 PM Wilton Memorial Hall

Please Print Clearly

SIGN IN SHEET

NAME	ADDRESS	POSTAL CODE	PHONE #	ADD TO MAILING LIST	
Tom Aichele	Confidential Information			<input checked="" type="checkbox"/> YES	<input type="checkbox"/> NO
Kolleen Koppinger				<input checked="" type="checkbox"/> YES	<input type="checkbox"/> NO
Erin Christensen				<input checked="" type="checkbox"/> YES	<input type="checkbox"/> NO
Robert				<input checked="" type="checkbox"/> YES	<input type="checkbox"/> NO
Lisa Zarhee				<input checked="" type="checkbox"/> YES	<input type="checkbox"/> NO
Doug SchavenT				<input checked="" type="checkbox"/> YES	<input type="checkbox"/> NO
Larry Falkenstein				<input type="checkbox"/> YES	<input checked="" type="checkbox"/> NO
Ken Frank				<input checked="" type="checkbox"/> YES	<input type="checkbox"/> NO
DAVID SPITZER				<input checked="" type="checkbox"/> YES	<input type="checkbox"/> NO

Wilton IV Wind Energy Center Open House

July 26, 2011, 5-8 PM Wilton Memorial Hall

Please Print Clearly

SIGN IN SHEET

NAME	ADDRESS	POSTAL CODE	PHONE #	ADD TO MAILING LIST		
Steve Bauer	Confidential Information				<input checked="" type="checkbox"/> YES	<input type="checkbox"/> NO
Kelly Bajer					<input checked="" type="checkbox"/> YES	<input type="checkbox"/> NO
Betty Salter					<input checked="" type="checkbox"/> YES	<input type="checkbox"/> NO
Sharon & Wayne Narum					<input checked="" type="checkbox"/> YES	<input type="checkbox"/> NO
Dean Goetz					<input checked="" type="checkbox"/> YES	<input type="checkbox"/> NO
Earl Aune					<input checked="" type="checkbox"/> YES	<input type="checkbox"/> NO
Rod Backman					<input checked="" type="checkbox"/> YES	<input type="checkbox"/> NO
MAX Sorch					<input checked="" type="checkbox"/> YES	<input type="checkbox"/> NO
Bob Sorch					<input checked="" type="checkbox"/> YES	<input type="checkbox"/> NO
KYLE HUBB					<input checked="" type="checkbox"/> YES	<input type="checkbox"/> NO

Wilton Wind IV Energy Center

Overview

- » Located in Burleigh County, North Dakota
- » Built, owned, and operated by a subsidiary of NextEra™ Energy Resources
- » up to 99-megawatt wind generation plant
- » up to 62 1.6-megawatt GE turbines that will be capable of generating enough electricity to power more than 24,000 homes
- » Each turbine will be approximately 262 feet tall from the ground to the hub in the center of the blades
- » Commercial operation began in 2012

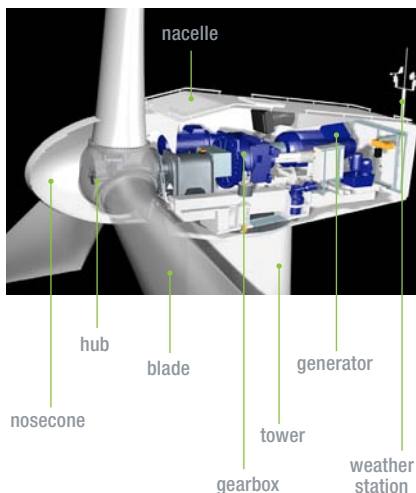
Benefits

- » Expected to employ a staff of 5
- » Adds tax base to Burleigh County in property taxes
- » Provides economic stimulus of landowner lease payments
- » Creates no air or water pollution
- » Uses no water in the generation of electricity
- » Allows land to remain in agricultural use



About NextEra Energy Resources

- » A leading clean energy provider operating wind, natural gas, solar, hydroelectric and nuclear power plants across the nation
- » Over 18,000 megawatts of generating capacity in 26 states and 3 provinces in Canada
- » The largest wind generator in North America with facilities in 17 states
- » A subsidiary of NextEra Energy, Inc. with headquarters in Juno Beach, Florida



How It Works

Wind turbines work on the same principle as a child's pinwheel. When you blow on a pinwheel, the blades of the pinwheel spin around—same with a wind turbine.

When the wind blows against the blades of the wind turbine, the blades slowly rotate. The blades are connected to a drive shaft inside the large box (called a nacelle) seen on the top of the tower. The drive shaft turns the generator, which makes the electricity. Each wind turbine operates independently of the others. Each is, essentially, an individual power plant.

The turbine has a weather station on the top that tells it the wind speed and wind direction. That information is sent to the turbine's computer, which moves the top of the turbine (the nacelle and blades) so that the blades are always facing into the wind. The nacelle can turn 360 degrees.

The electricity is carried in cables from the generator down the inside of the tower, then underground to the site's substation. That power then goes into the offsite transmission lines and is used by the local utility to serve its customers in the region.



Wilton IV Wind Open House
July 26, 2011, 5-8 PM Wilton Memorial Hall
Public Comment Meeting
Environmental Impact Statement (EIS)

Thank you for your interest in the proposed Wilton IV Wind EIS. Please complete the appropriate sections of this form to be included on the EIS mailing list and/or to provide comments. Written comments can be submitted at the Scoping Meeting, faxed to (406) 255-2900, mailed to Mr. Matt Marsh, Western Area Power Administration, Upper Great Plains Customer Service Office, P.O. Box 35800, Billings, MT 59107-5800 or sent to mmarsh@wapa.gov. To be included in our public comment process, please ensure your comments are postmarked or turned in by **August 20, 2011**.

- I would like a paper copy of the Draft EIS when it becomes available.
- I would like a Compact Disk (CD) of the EIS when it becomes available.
- Just email me the web link to the EIS when it becomes available. (Quickest and Preferred method)

Please Print Contact Info Below

Name:

Organization:

E-mail address:

Daytime Phone No. (optional):

Street Address:

City / State / Zip Code:

Please indicate any questions, comments or concerns you have about the proposed project in the comment section below (continue on separate sheet if necessary).

Thank you for your time and interest.

Please fold in thirds and tape

Place
postage
here

Mr. Matt Marsh
Western Area Power Administration
Upper Great Plains Region
P.O. Box 35800
Billings, MT 59107-5800

Appendix 4 – Project Map

Wilton IV Turbine Layout

Burleigh County, ND

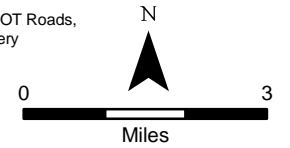
JULY 2011



Legend

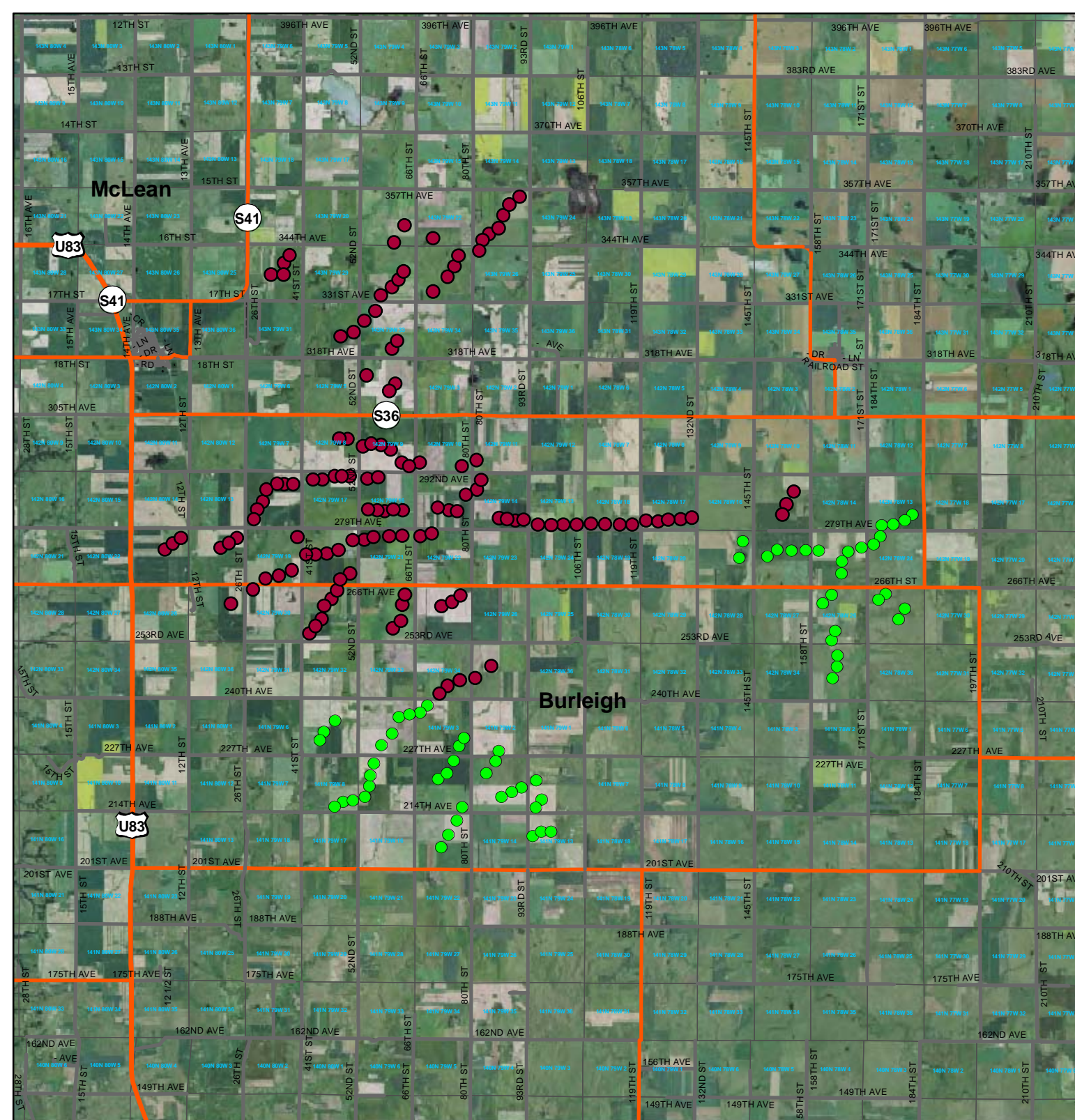
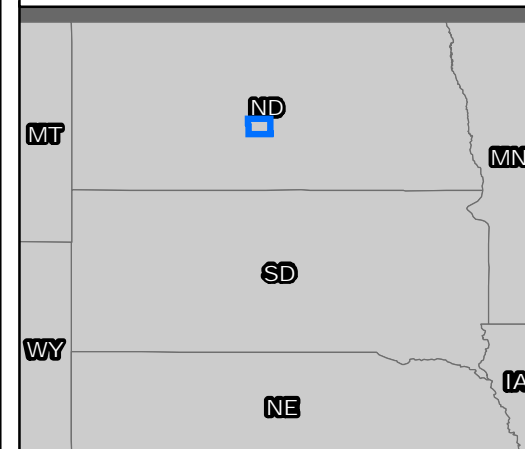
- Wilton IV Wind Turbine
- Existing Wind Turbine
- Local Road
- Major Road
- PLSS Section Boundary
- County Boundary
- State Boundary

Sources: ND DOT Roads,
NAIP 1m Imagery



File: P:\FPL Energy\Dakotas\Contract XXXX - Wilton IV\GIS\Spatial\MXD
WiltonIV_ProjectBoundary_Turbines_Aerial_20110720.mxd
Coordinate System: NAD 1983 StatePlane North Dakota South FIPS 3302 Feet

LOCATION MAP



Wilton IV Turbine Layout

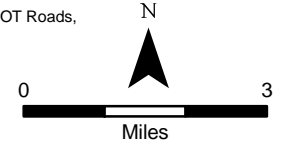
Burleigh County, ND
JULY 2011



Legend

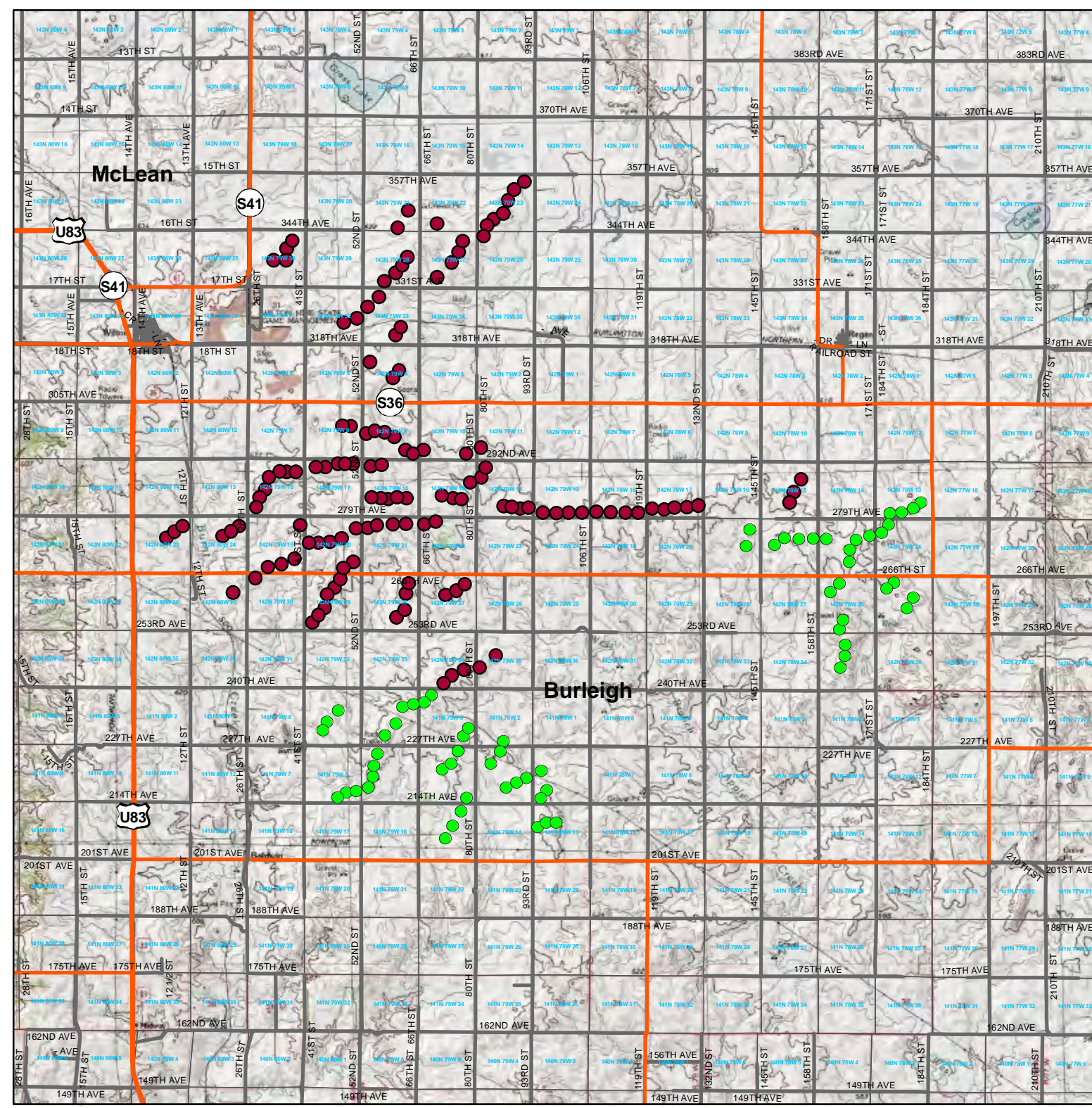
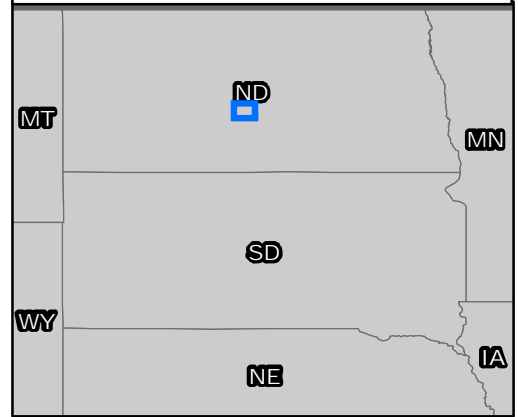
- Wilton IV Wind Turbine
- Existing Wind Turbine
- Local Road
- Major Road
- PLSS Section Boundary
- County Boundary
- State Boundary

Sources: ND DOT Roads,
ESRI Topo



File: P:\FPL Energy\Dakotas\Contract XXXX - Wilton IV\GIS\Spatial\MXD
WiltonIV_ProjectBoundary_Turbines_Topo_v2_20110720.mxd
Coordinate System: NAD 1983 StatePlane North Dakota South FIPS 3302 Feet

LOCATION MAP



Appendix 5 – Photos

Wilton IV Scoping Meeting Photos July 26, 2011



Photo 1 Poster Boards on Display



Photo 2 Attendees Reviewing Handouts

Wilton IV Scoping Meeting Photos July 26, 2011



Photo 3 Project Area Maps on Display

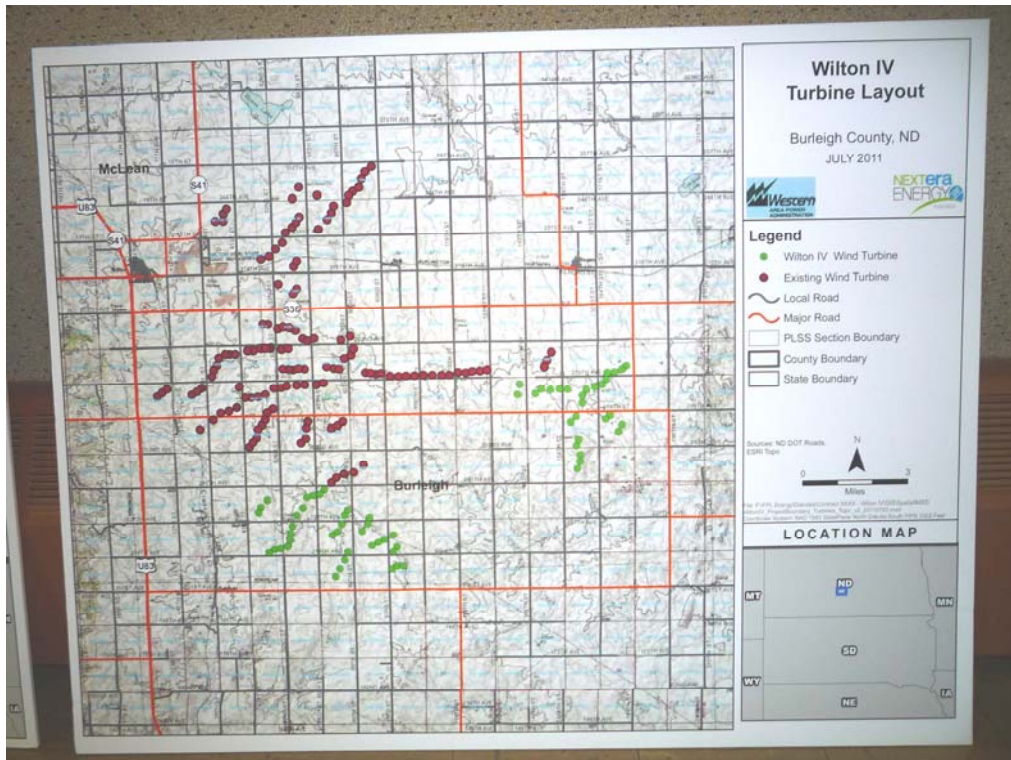


Photo 4 Project Area Map on Display

**Wilton IV Scoping Meeting Photos
July 26, 2011**



Photo 5 Project Proponents Answering Questions



Photo 6 Attendees Reviewing Project Map

**Wilton IV Scoping Meeting Photos
July 26, 2011**



Photo 7 Attendees Reviewing Information Posters



Photo 8 Attendees Filling Out Comment Sheets