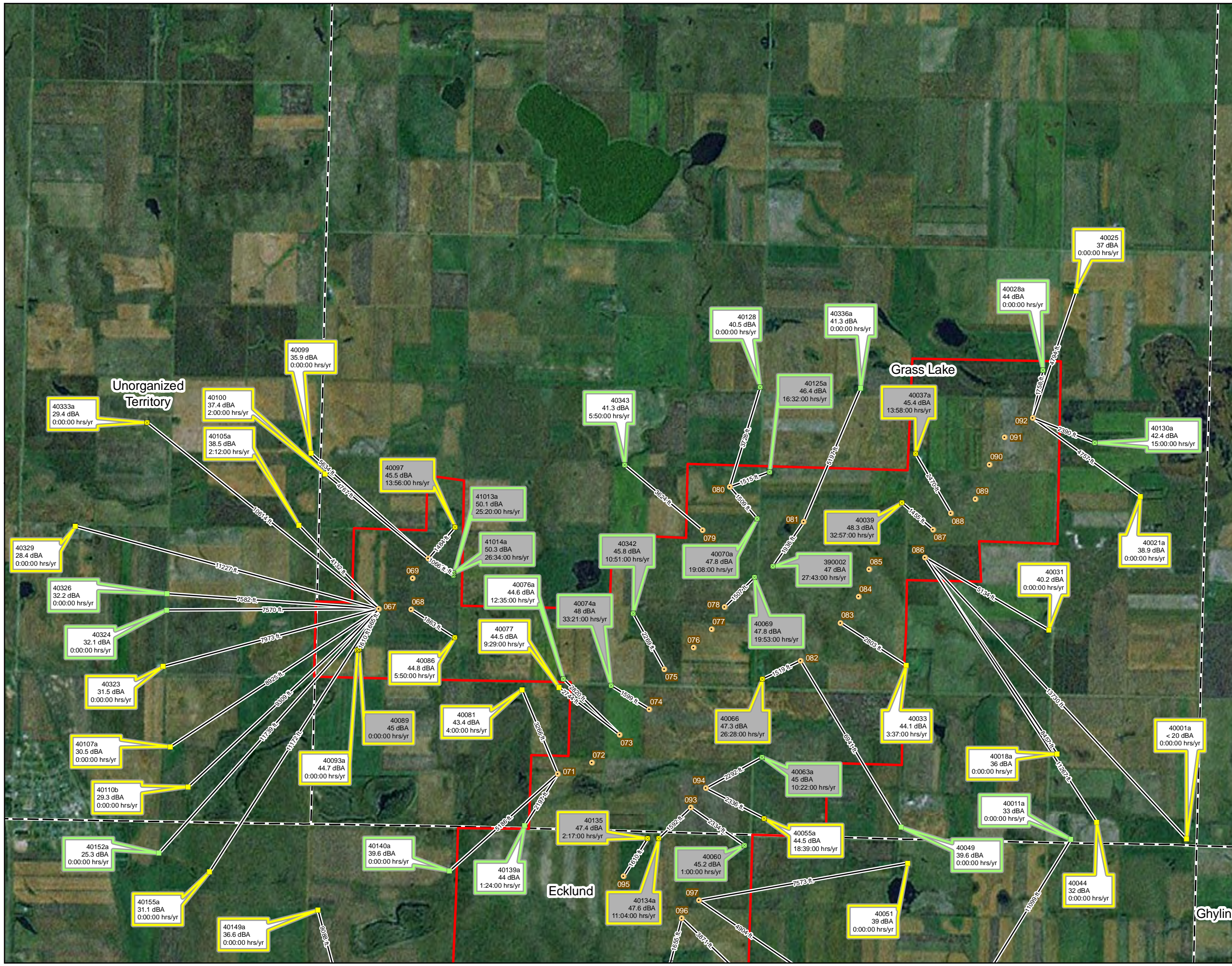


WILTON WIND IV, LLC
 WILTON IV WIND ENERGY CENTER
 BURLEIGH COUNTY, NORTH DAKOTA

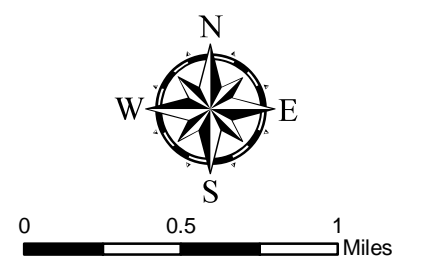
LATE FILED EXHIBIT #3
 RESIDENCES WITH SOUND
 AND SHADOW VALUES

JANUARY 2012

FOR NEXTERA REVIEW



- ☒ Receptor - Participating
 - Receptor - Occupied
 - Receptor - Unoccupied
 - Wilton IV WTG (GE 1.6 xle)
 - Wilton I WTG (GE 1.5 sle)
 - Wilton II WTG (GE 1.5 xle)
 - Baldwin WTG (GE 1.6 xle)
 - Substation
 - Project Boundary
 - Civil Township
 - 40130a
42.4 dBA
15:00:00 hrs/yr Receptor ID
Modeled Noise at Max Rotation
at Anomalous Met Conditions
Modeled Shadow Flicker Results
- Gray Label Background = Above 45 dBA



File: P:\FPL Energy\Dakota\Contract 4379 - Wilton IV\GIS\Spatial\MXD\noise1
 Fig7_Cumulative_WTG_AnomMet_Update_20120123_Fig1.mxd
 Drawn by: william.scales
 Coordinate System: NAD 1983 UTM Zone 14N

REFERENCE MAP

