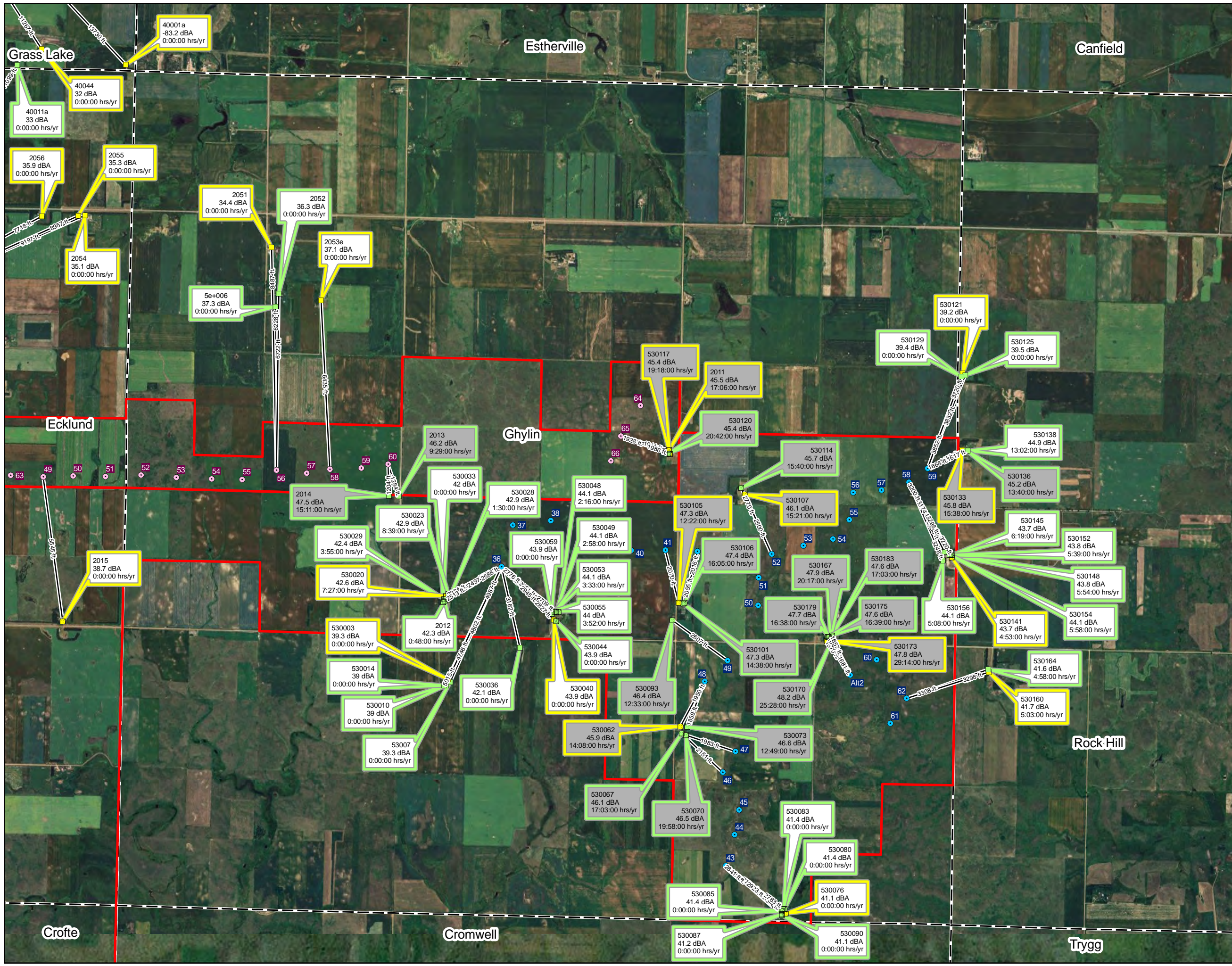


WILTON WIND IV, LLC
 WILTON IV WIND ENERGY CENTER
 BURLEIGH COUNTY, NORTH DAKOTA

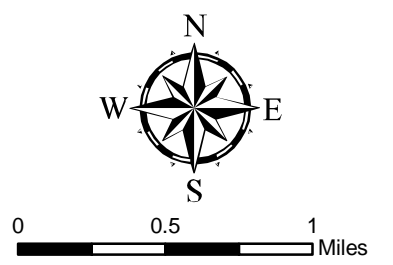
LATE FILED EXHIBIT #3
 RESIDENCES WITH SOUND
 AND SHADOW VALUES

JANUARY 2012

FOR NEXTERA REVIEW



- Receptor - Participating
- Receptor - Occupied
- Receptor - Unoccupied
- Wilton IV WTG (GE 1.6 xle)
- Wilton I WTG (GE 1.5 sle)
- Wilton II WTG (GE 1.5 xle)
- Baldwin WTG (GE 1.6 xle)
- Substation
- Project Boundary
- Civil Township
- 40130a
42.4 dBA
15:00:00 hrs/yr Receptor ID
Modeled Noise at Max Rotation
at Anomalous Met Conditions
Modeled Shadow Flicker Results
Gray Label Background = Above 45 dBA



File: P:\FFL Energy\Datotat\Contract 4379 - Wilton IV\GIS\Spatial\MXD\noise1
 Fig7_Cumulative_WTG_AnomMet_Update_20120123_Fig3.mxd
 Drawn by: william.scales
 Coordinate System: NAD 1983 UTM Zone 14N

REFERENCE MAP

