








AVOIDANCE CRITERIA



-  BUSINESS
-  RESIDENCE (WITHIN 500')
-  RESIDENCE (WITHIN 1 MILE)

THIS INFORMATION IS FOR ENVIRONMENTAL REVIEW PURPOSES ONLY.

LEGEND

-  MILE POST
-  BLOCK VALVE
-  PROPOSED ROUTE
-  1 MILE COORIDOR STUDY

SCALE: 1"=2000'

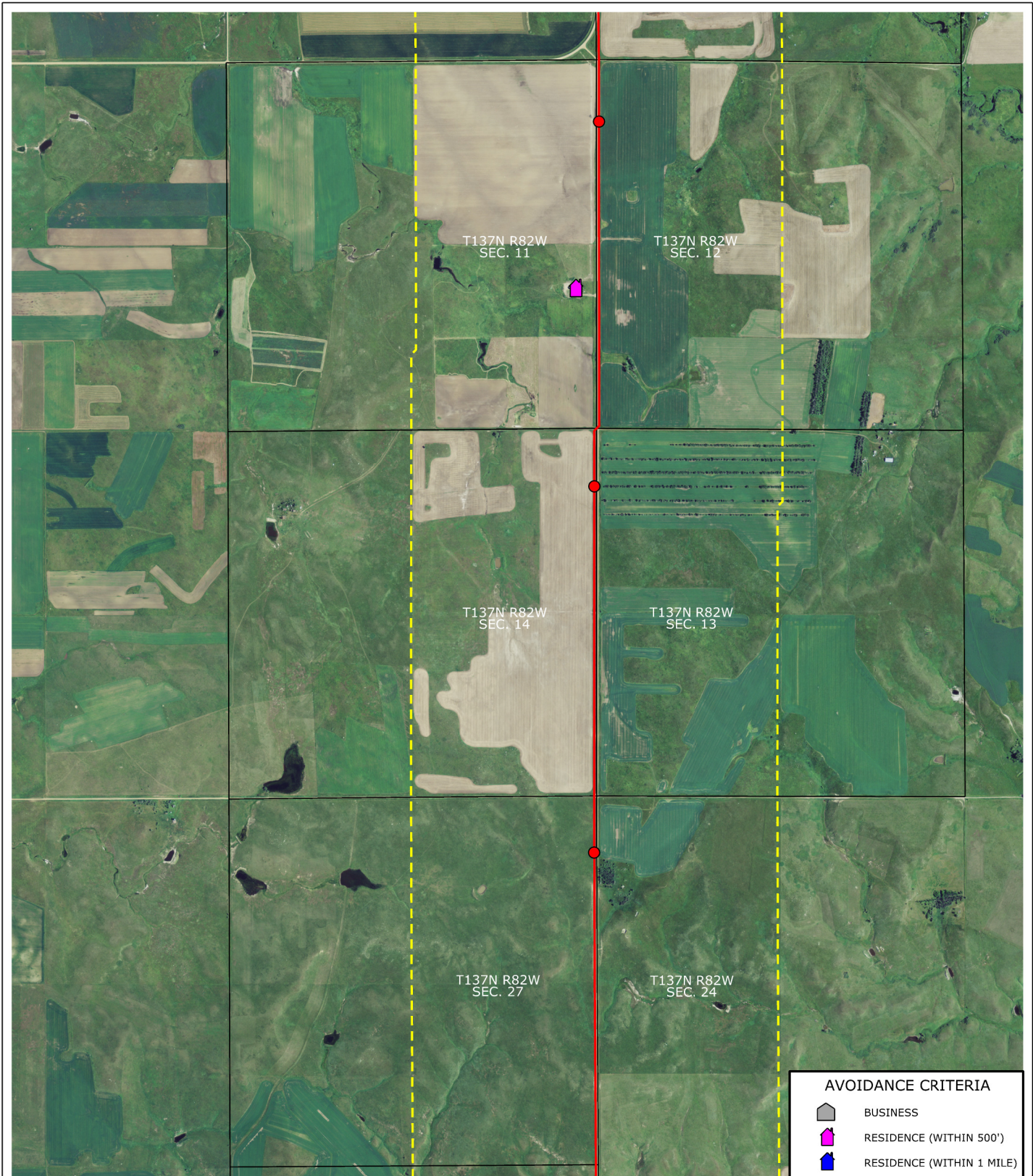



Montana-Dakota Utilities Co.
Heskett Station
Natural Gas Pipeline Project
Routing Criteria




MAP 1 OF 7



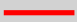



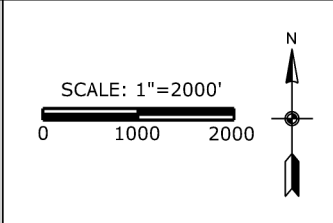
ProSource
TECHNOLOGIES



THIS INFORMATION IS FOR ENVIRONMENTAL REVIEW PURPOSES ONLY.

AVOIDANCE CRITERIA	
	BUSINESS
	RESIDENCE (WITHIN 500')
	RESIDENCE (WITHIN 1 MILE)

LEGEND	
	MILE POST
	BLOCK VALVE
	PROPOSED ROUTE
	1 MILE COORIDOR STUDY



Montana-Dakota Utilities Co.
 Heskett Station
 Natural Gas Pipeline Project
 Routing Criteria

MAP 2 OF 7





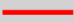

Montana-Dakota Utilities Co.
 A Division of MDU Resources Group, Inc.
In the Community to Serve






THIS INFORMATION IS FOR ENVIRONMENTAL REVIEW PURPOSES ONLY.

LEGEND

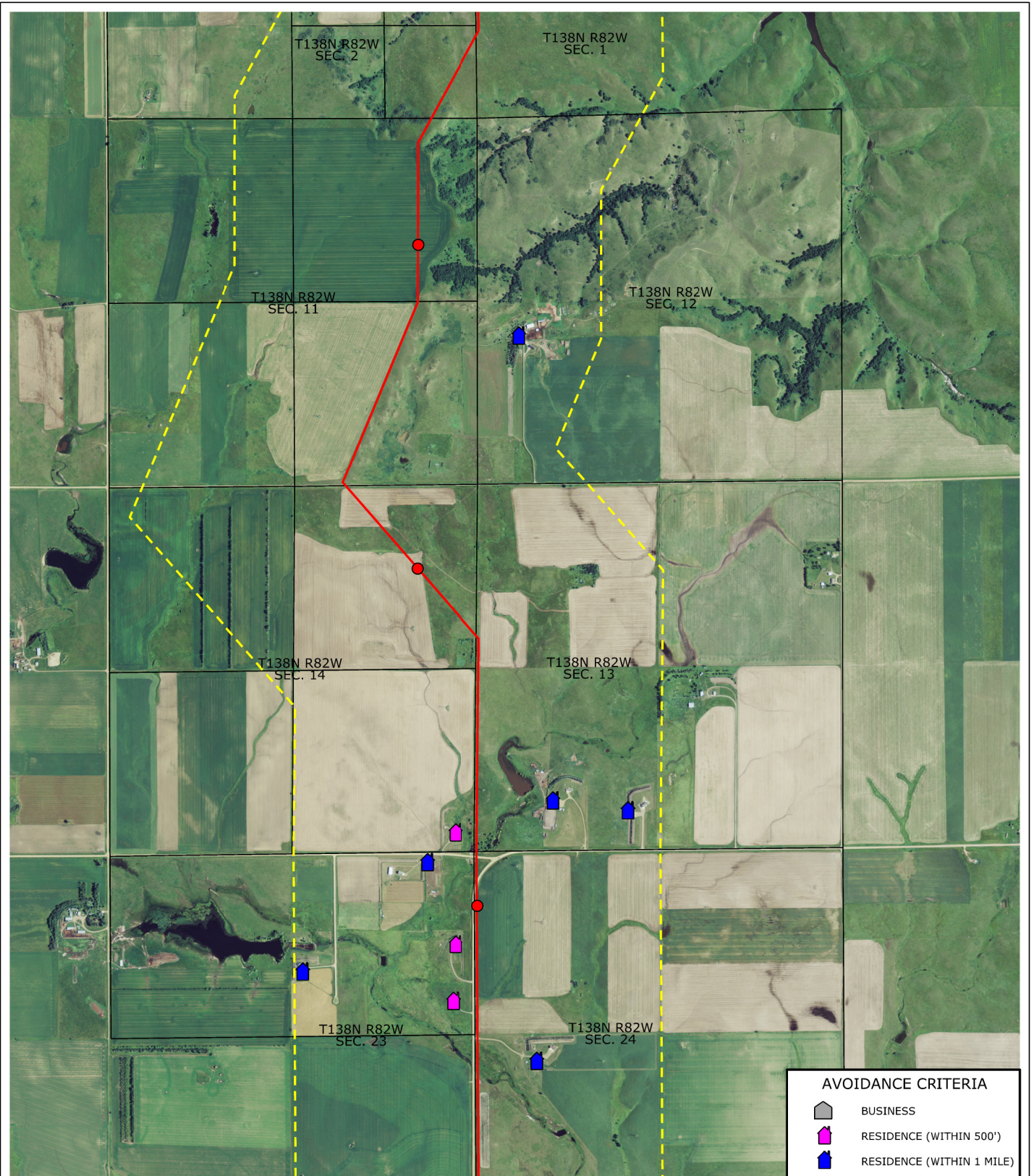
-  MILE POST
-  BLOCK VALVE
-  PROPOSED ROUTE
-  1 MILE COORIDOR STUDY

SCALE: 1"=2000'




Montana-Dakota Utilities Co.
Hesket Station
Natural Gas Pipeline Project
Routing Criteria





THIS INFORMATION IS FOR ENVIRONMENTAL REVIEW PURPOSES ONLY.

LEGEND

- MILE POST
- ⊠ BLOCK VALVE
- PROPOSED ROUTE
- 1 MILE CORRIDOR STUDY

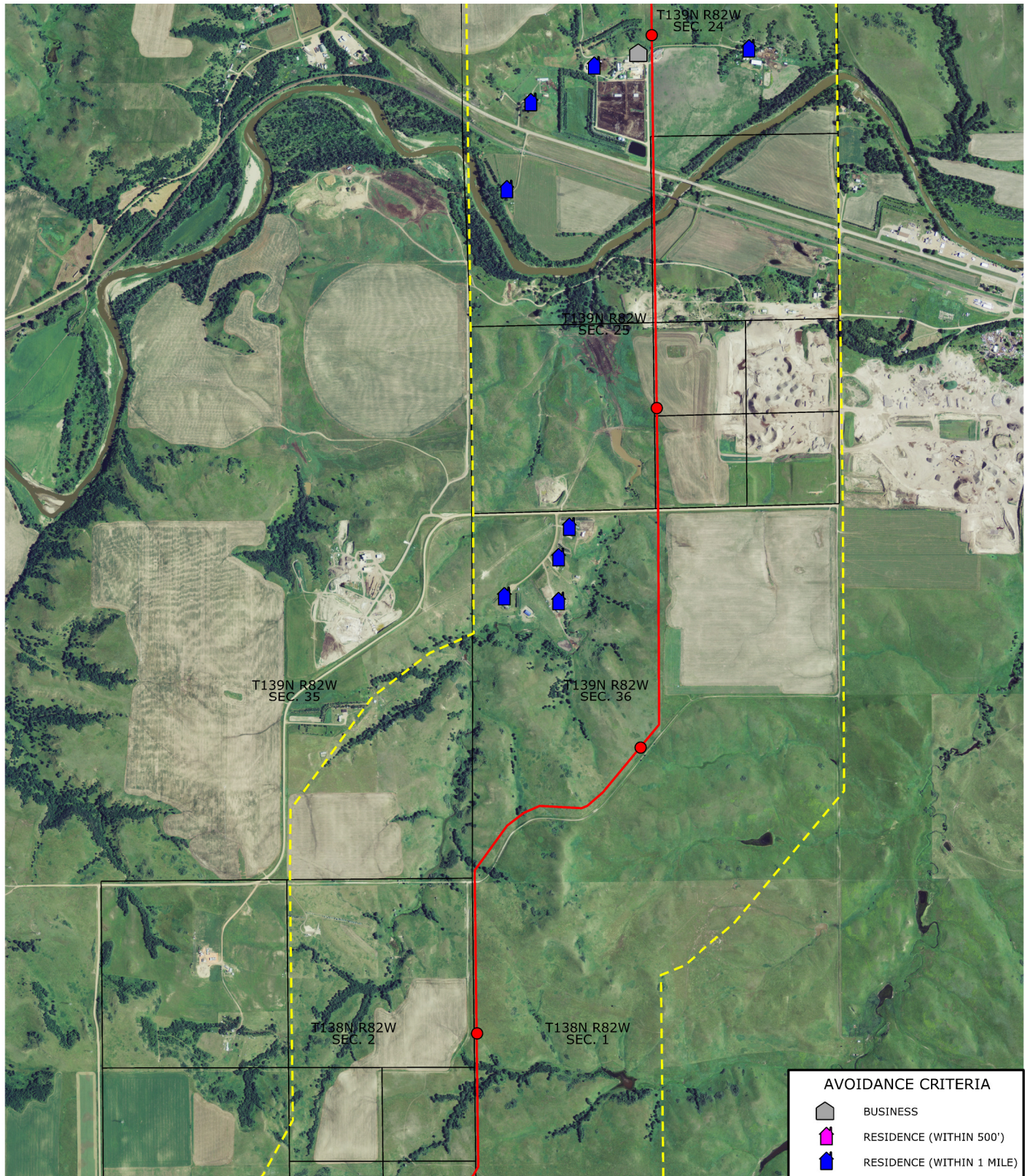
SCALE: 1"=2000'

0 2000



Montana-Dakota Utilities Co.
Heskest Station
Natural Gas Pipeline Project
Routing Criteria





THIS INFORMATION IS FOR ENVIRONMENTAL REVIEW PURPOSES ONLY.

LEGEND

- MILE POST
- ⊠ BLOCK VALVE
- PROPOSED ROUTE
- 1 MILE COORIDOR STUDY

SCALE: 1"=2000'

0 2000

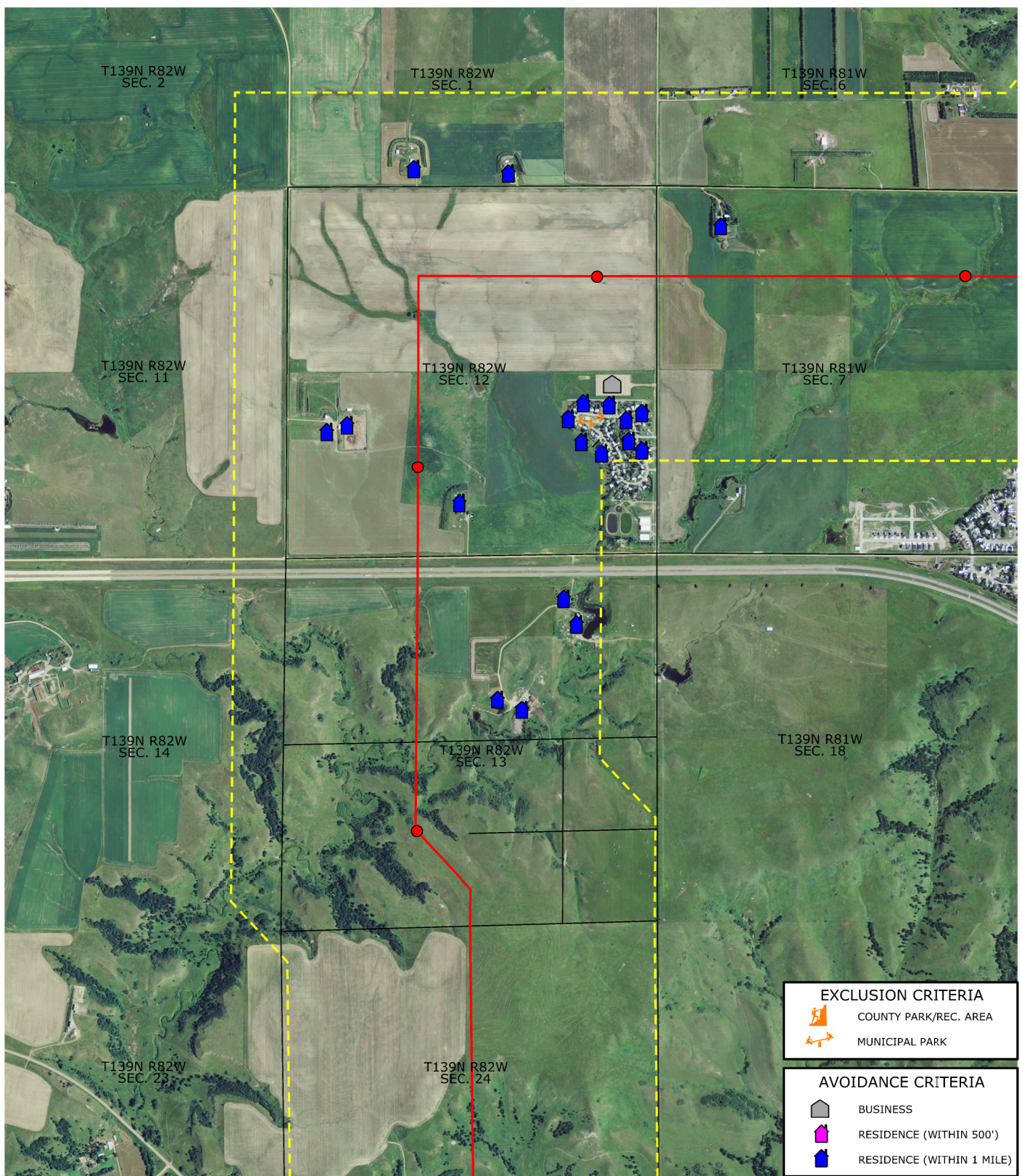
Montana-Dakota Utilities Co.
Heskett Station
Natural Gas Pipeline Project
Routing Criteria

MAP 5 OF 7

AVOIDANCE CRITERIA

- BUSINESS
- RESIDENCE (WITHIN 500')
- RESIDENCE (WITHIN 1 MILE)

ProSource
EPC | REGULATION | O&M



THIS INFORMATION IS FOR ENVIRONMENTAL REVIEW PURPOSES ONLY.

LEGEND

- MILE POST
- ⊠ BLOCK VALVE
- PROPOSED ROUTE
- 1 MILE COORIDOR STUDY

SCALE: 1"=2000'

0 2000

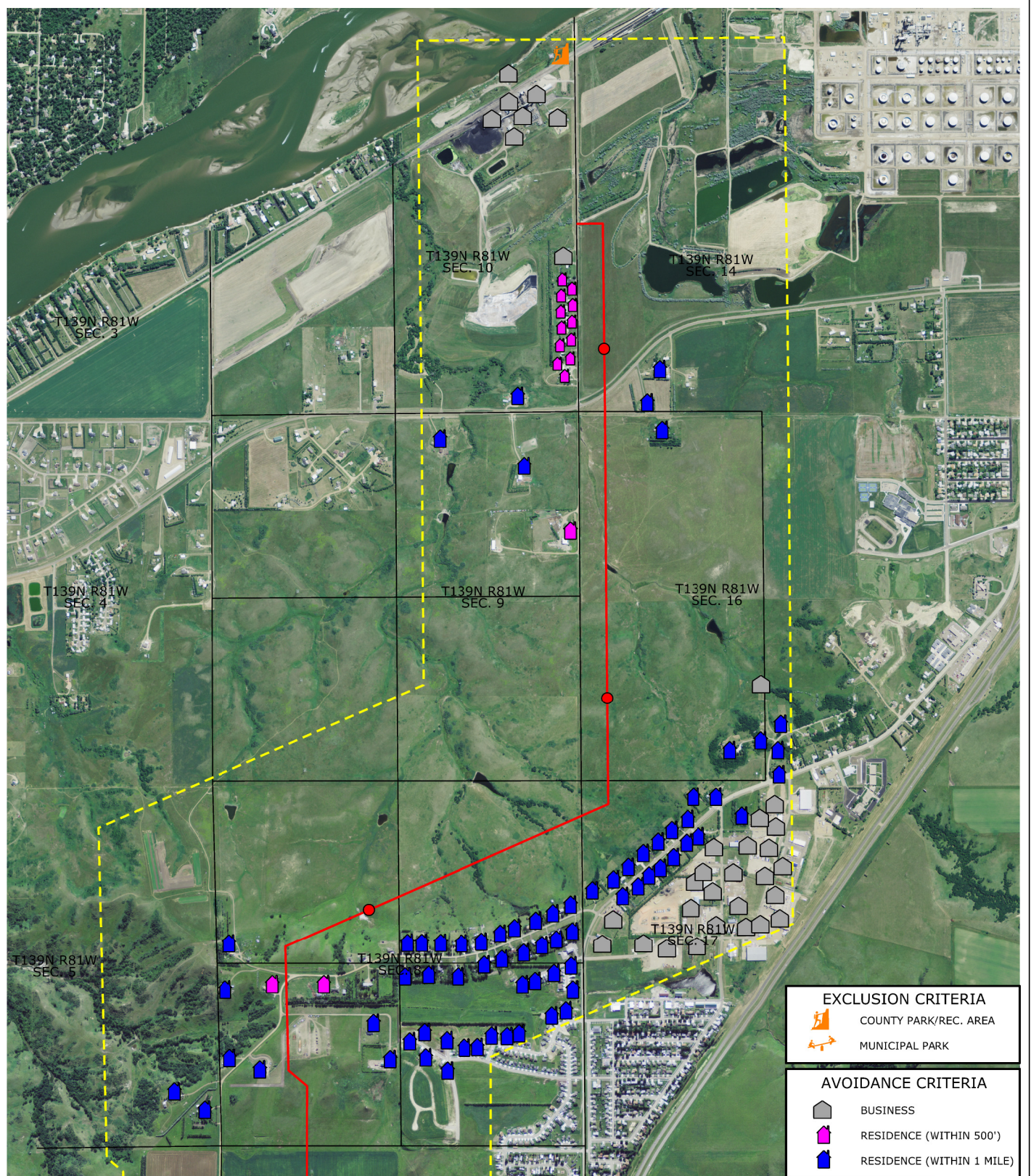
N
↑
—
↓

Montana-Dakota Utilities Co.
Heskett Station
Natural Gas Pipeline Project
Routing Criteria

MAP 6 OF 7

MONTANA-DAKOTA
UTILITIES CO.
A Division of MDU Resources Group, Inc.
In the Community to Serve™

ProSource
TECHNOLOGIES



THIS INFORMATION IS FOR ENVIRONMENTAL REVIEW PURPOSES ONLY.

EXCLUSION CRITERIA	
	COUNTY PARK/REC. AREA
	MUNICIPAL PARK

AVOIDANCE CRITERIA	
	BUSINESS
	RESIDENCE (WITHIN 500')
	RESIDENCE (WITHIN 1 MILE)

LEGEND

- MILE POST
- BLOCK VALVE
- PROPOSED ROUTE
- 1 MILE COORIDOR STUDY

SCALE: 1"=2000'

Montana-Dakota Utilities Co.
 Heskett Station
 Natural Gas Pipeline Project
 Routing Criteria

MAP 7 OF 7

MONTANA-DAKOTA
 UTILITIES CO.
A Division of MDU Resources Group, Inc.
In the Community to Serve®

ProSource
TECHNICAL SERVICES