

THIS INFORMATION IS FOR ENVIRONMENTAL REVIEW PURPOSES ONLY.

LEGEND

- MILE POST
- BLOCK VALVE
- PROPOSED ROUTE
- 1 MILE COORIDOR STUDY

SCALE: 1"=2000'

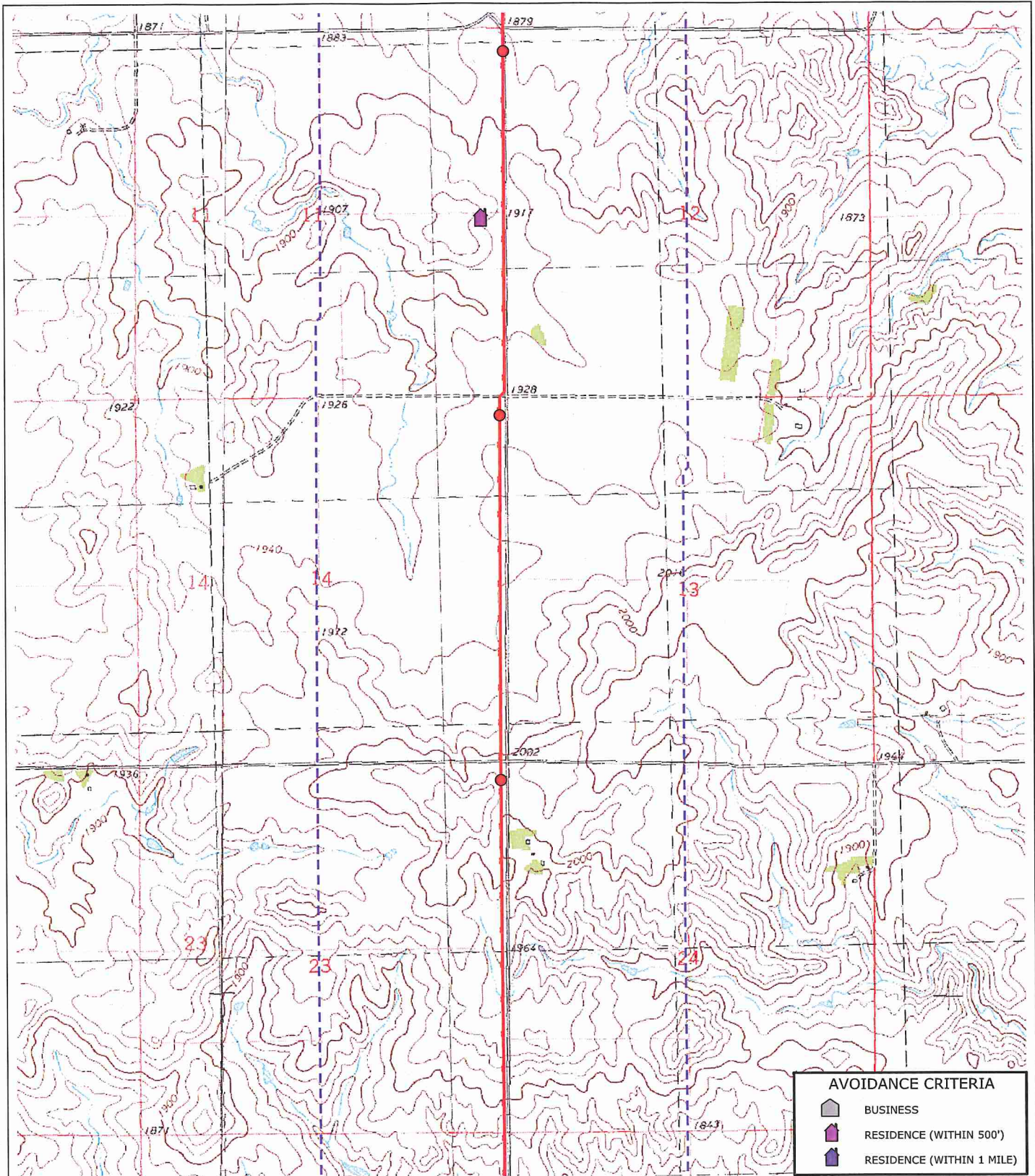
0 1000 2000

Montana-Dakota Utilities Co.
 Heskett Station
 Natural Gas Pipeline Project
 Routing Criteria

MAP 1 OF 7

MONTANA-DAKOTA
 UTILITIES CO.
A Division of MDU Resources Group, Inc.
In the Community to Serve™

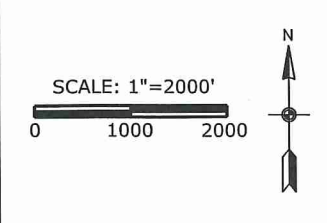
ProSource
TECHNOLOGIES



THIS INFORMATION IS FOR ENVIRONMENTAL REVIEW PURPOSES ONLY.

AVOIDANCE CRITERIA	
	BUSINESS
	RESIDENCE (WITHIN 500')
	RESIDENCE (WITHIN 1 MILE)

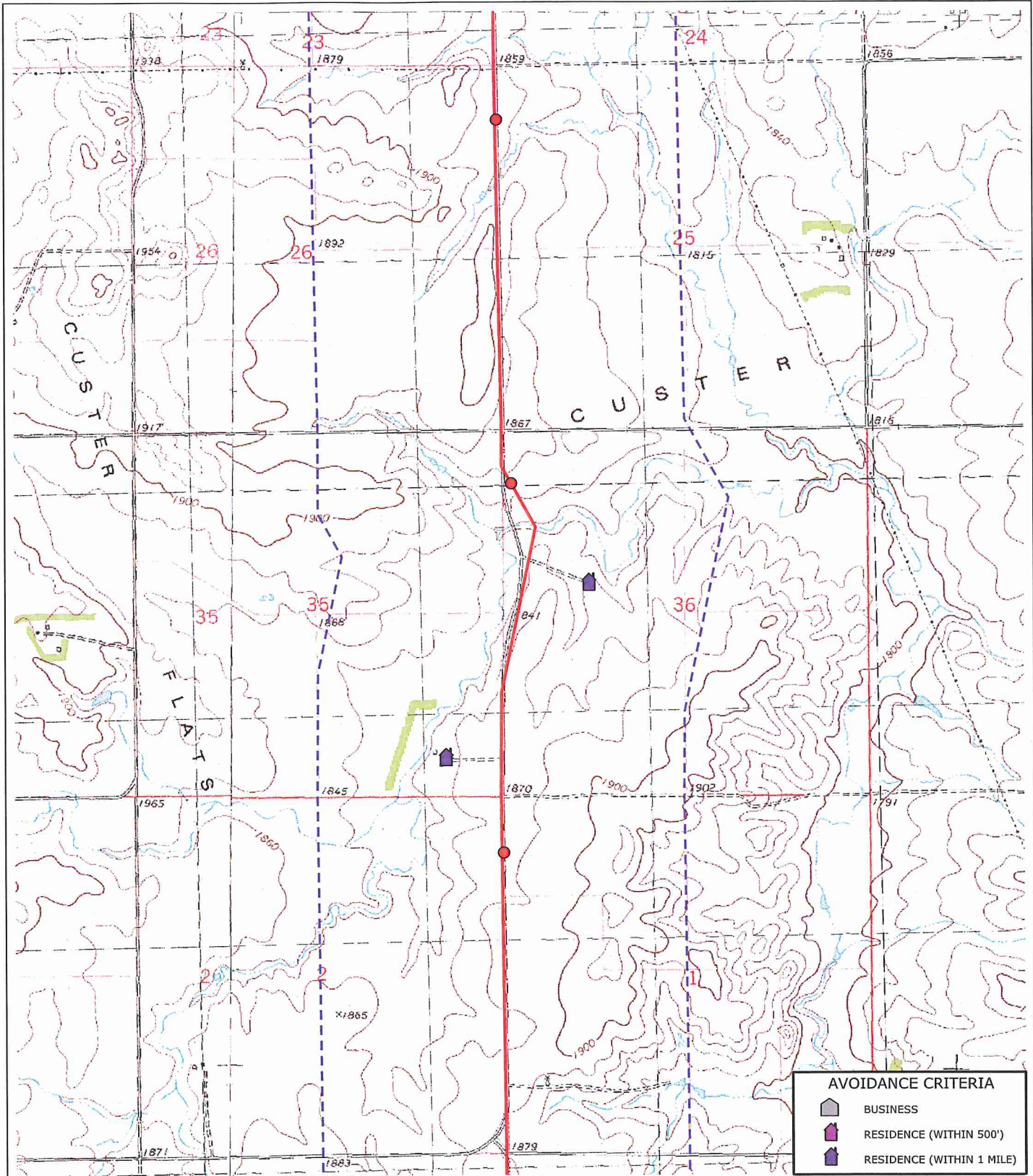
LEGEND	
	MILE POST
	BLOCK VALVE
	PROPOSED ROUTE
	1 MILE COORIDOR STUDY






Montana-Dakota Utilities Co.
 Heskett Station
 Natural Gas Pipeline Project
 Routing Criteria

MAP 2 OF 7

MONTANA-DAKOTA
 UTILITIES CO.
 A Division of M&D Resource Group, Inc.
*In the Community to Serve®
 in the Community we serve™*

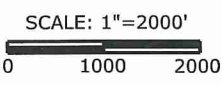


THIS INFORMATION IS FOR ENVIRONMENTAL REVIEW PURPOSES ONLY.

AVOIDANCE CRITERIA	
	BUSINESS
	RESIDENCE (WITHIN 500')
	RESIDENCE (WITHIN 1 MILE)

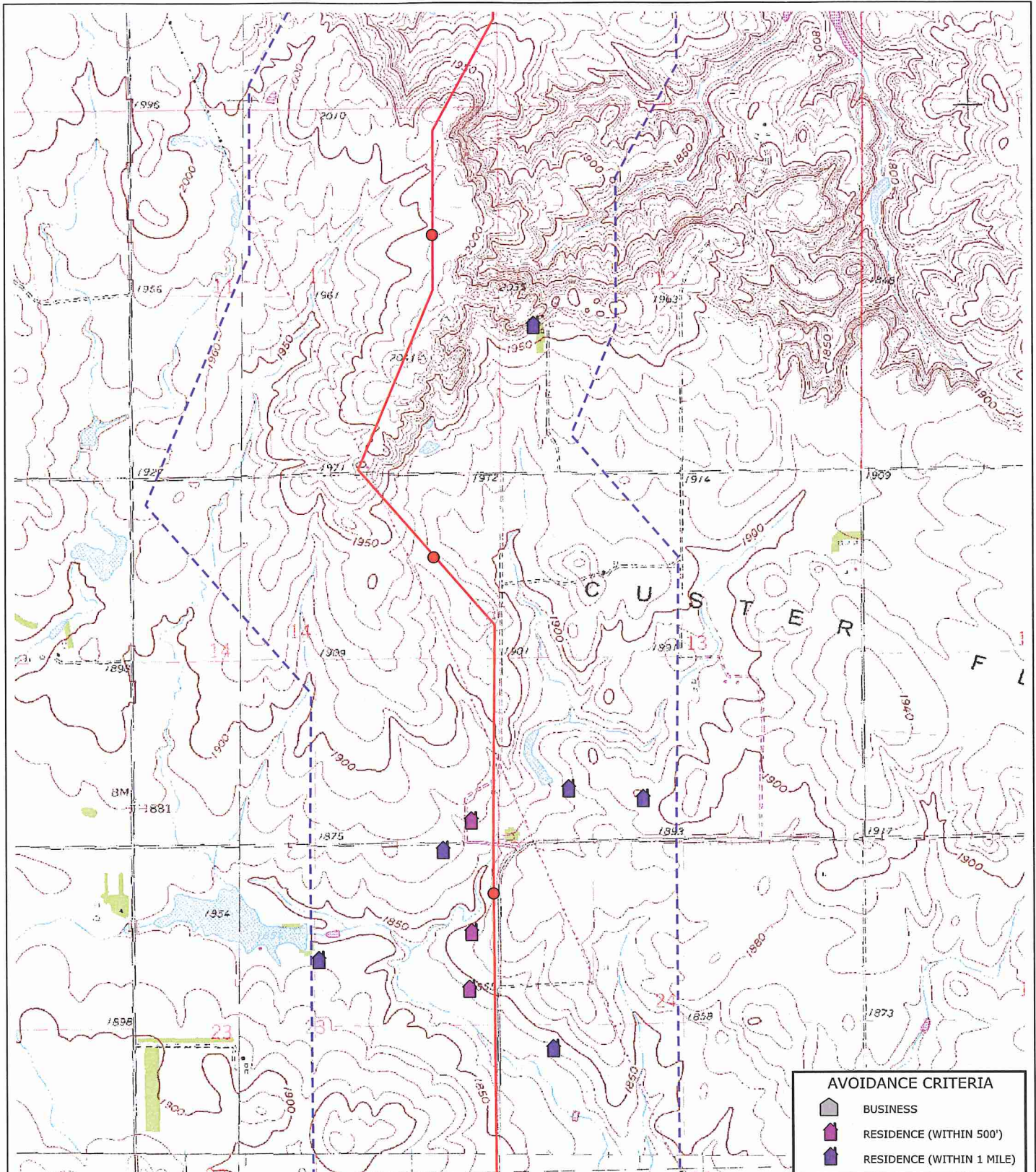
LEGEND

-  MILE POST
-  BLOCK VALVE
-  PROPOSED ROUTE
-  1 MILE COORIDOR STUDY



Montana-Dakota Utilities Co.
Heskett Station
Natural Gas Pipeline Project
Routing Criteria





AVOIDANCE CRITERIA	
	BUSINESS
	RESIDENCE (WITHIN 500')
	RESIDENCE (WITHIN 1 MILE)

LEGEND	
	MILE POST
	BLOCK VALVE
	PROPOSED ROUTE
	1 MILE COORIDOR STUDY

SCALE: 1"=2000'

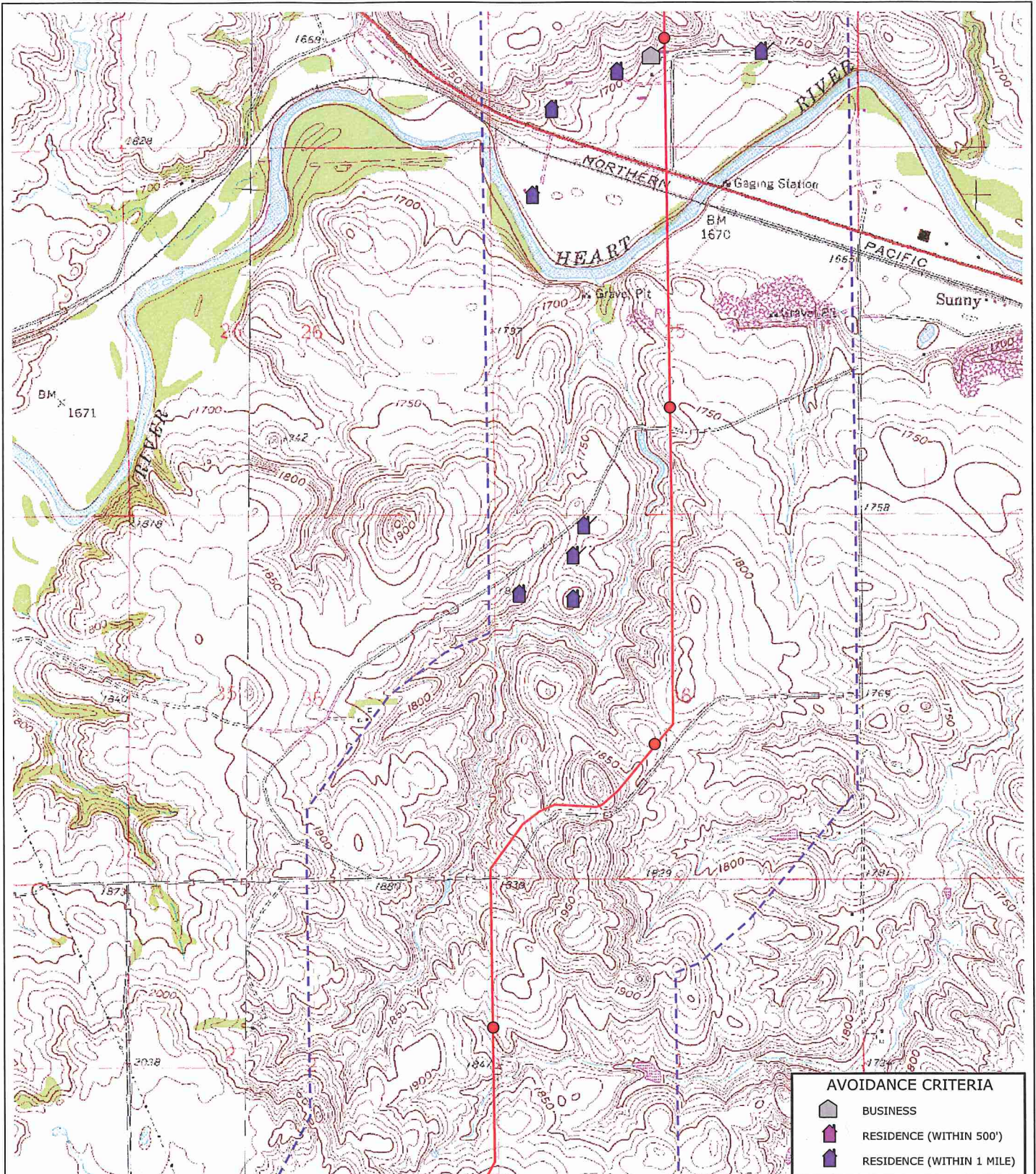
0 1000 2000

Montana-Dakota Utilities Co.
 Heskett Station
 Natural Gas Pipeline Project
 Routing Criteria

MAP 4 OF 7

MONTANA-DAKOTA
 UTILITIES CO.
A Division of HD Resources Group, Inc.
*In the Community to Serve®
 In the Community to Serve®*

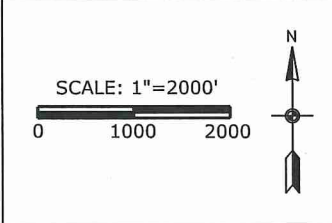
ProSource
REGULATORY SERVICES



THIS INFORMATION IS FOR ENVIRONMENTAL REVIEW PURPOSES ONLY.

AVOIDANCE CRITERIA	
	BUSINESS
	RESIDENCE (WITHIN 500')
	RESIDENCE (WITHIN 1 MILE)

LEGEND	
	MILE POST
	BLOCK VALVE
	PROPOSED ROUTE
	1 MILE COORIDOR STUDY

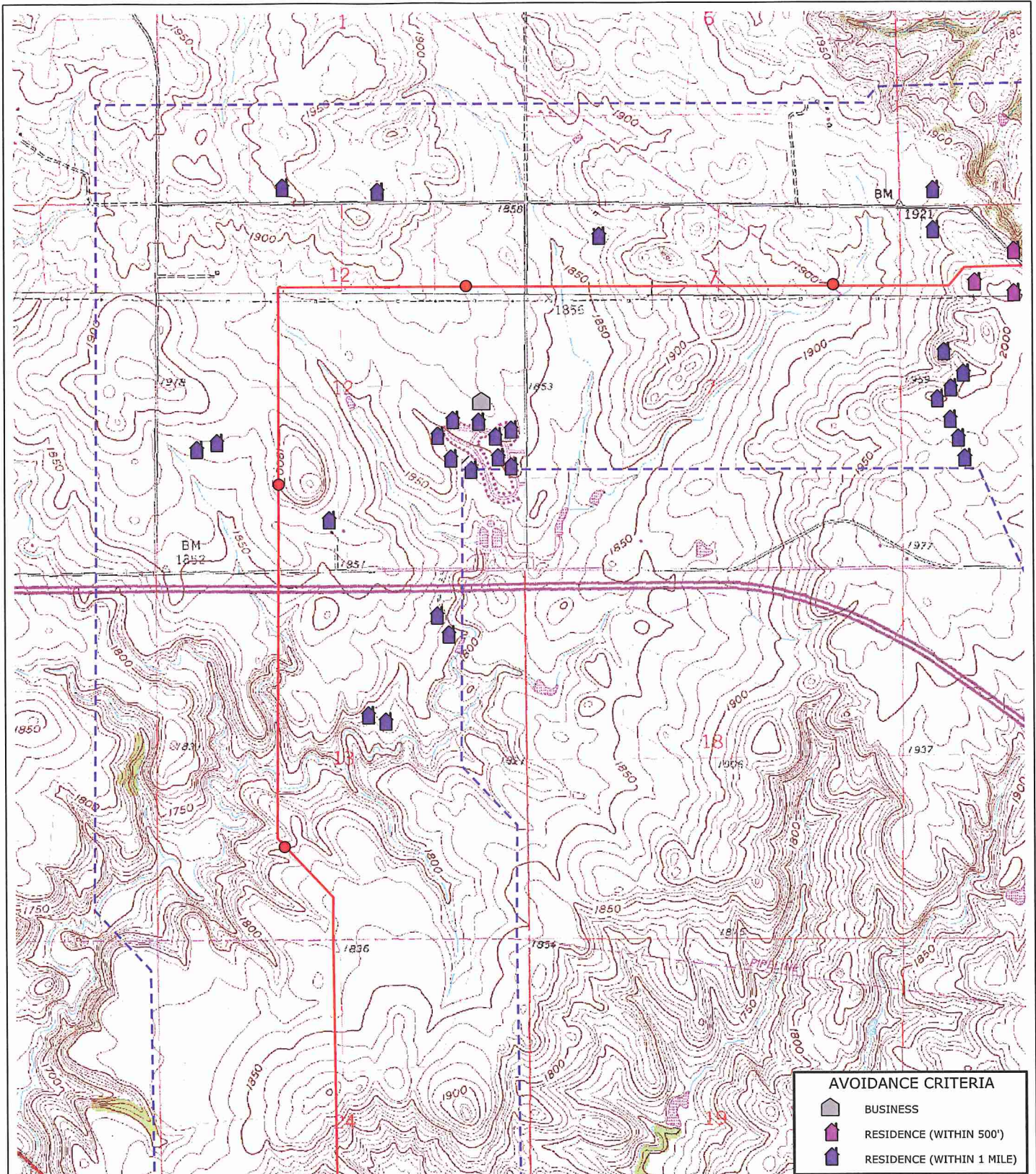


Montana-Dakota Utilities Co.
 Heskett Station
 Natural Gas Pipeline Project
 Routing Criteria

MAP 5 OF 7

MONTANA-DAKOTA
 UTILITIES CO.
A Division of MDT Resources Group, Inc.
In the Community to Serve®

ProSource
TECHNICAL SERVICES



THIS INFORMATION IS FOR ENVIRONMENTAL REVIEW PURPOSES ONLY.

AVOIDANCE CRITERIA	
	BUSINESS
	RESIDENCE (WITHIN 500')
	RESIDENCE (WITHIN 1 MILE)

LEGEND	
	MILE POST
	BLOCK VALVE
	PROPOSED ROUTE
	1 MILE CORRIDOR STUDY

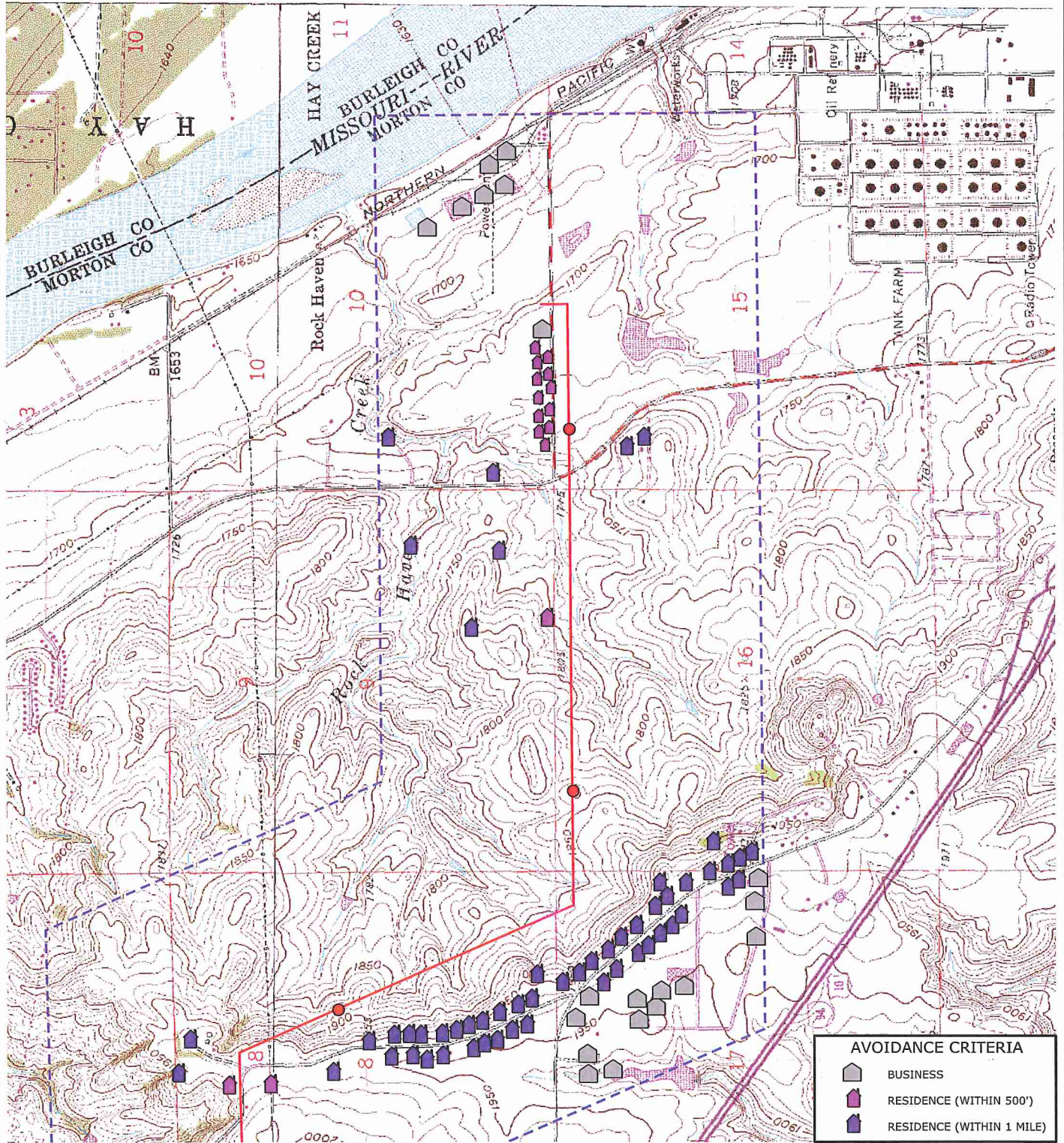
SCALE: 1"=2000'

0 1000 2000

Montana-Dakota Utilities Co.
 Heskett Station
 Natural Gas Pipeline Project
 Routing Criteria

MAP 6 OF 7

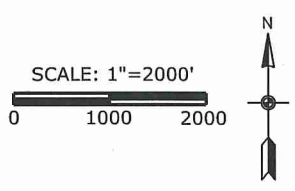
MONTANA-DAKOTA UTILITIES CO.
 A Division of HD Resources Group, Inc.
*In the Community to Serve®
 in the Community to Succeed*



THIS INFORMATION IS FOR ENVIRONMENTAL REVIEW PURPOSES ONLY.

AVOIDANCE CRITERIA	
	BUSINESS
	RESIDENCE (WITHIN 500')
	RESIDENCE (WITHIN 1 MILE)

LEGEND	
	MILE POST
	BLOCK VALVE
	PROPOSED ROUTE
	1 MILE COORIDOR STUDY



Montana-Dakota Utilities Co.
 Heskett Station
 Natural Gas Pipeline Project
 Routing Criteria

MONTANA-DAKOTA
 UTILITIES CO.
A Division of MTU Resources Group, Inc.
*In the Community to Serve®
 in the Community to Serve™*

ProSource
TECHNOLOGIES