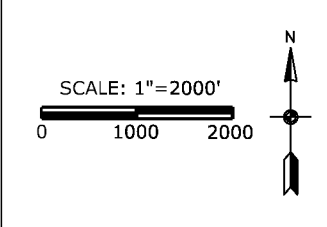


SELECTION CRITERIA	
	GRAVEL PIT/MINE
	WETLANDS
	SCENIC BYWAY
	RESIDENCE (WITHIN 500')
	RESIDENCE (WITHIN 1 MILE)
	WOODLANDS/WOODED AREA
	RADIO/TV/COMM. ANTENNAS

THIS INFORMATION IS FOR ENVIRONMENTAL REVIEW PURPOSES ONLY.

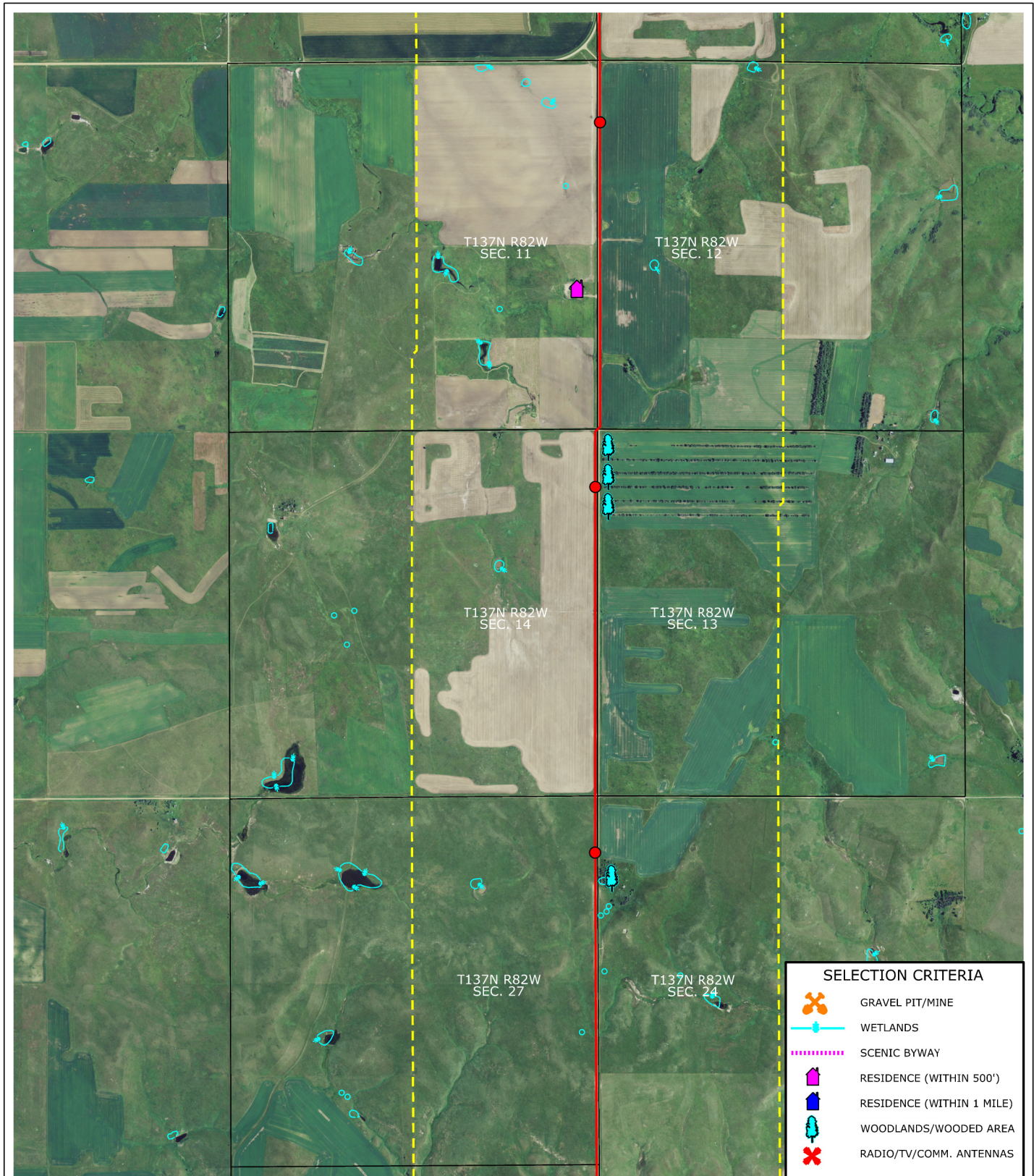
LEGEND	
	MILE POST
	BLOCK VALVE
	PROPOSED ROUTE
	1 MILE COORIDOR STUDY



Montana-Dakota Utilities Co.
Heskett Station
Natural Gas Pipeline Project
Selection Criteria

MONTANA-DAKOTA
UTILITIES CO.
A Division of MDU Resources Group, Inc.
In the Community to Serve®

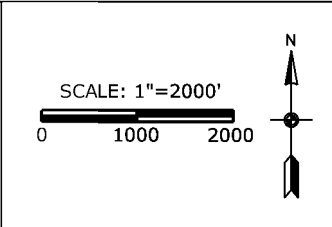
ProSource
TECHNICAL SERVICES



SELECTION CRITERIA	
	GRAVEL PIT/MINE
	WETLANDS
	SCENIC BYWAY
	RESIDENCE (WITHIN 500')
	RESIDENCE (WITHIN 1 MILE)
	WOODLANDS/WOODED AREA
	RADIO/TV/COMM. ANTENNAS

THIS INFORMATION IS FOR ENVIRONMENTAL REVIEW PURPOSES ONLY.

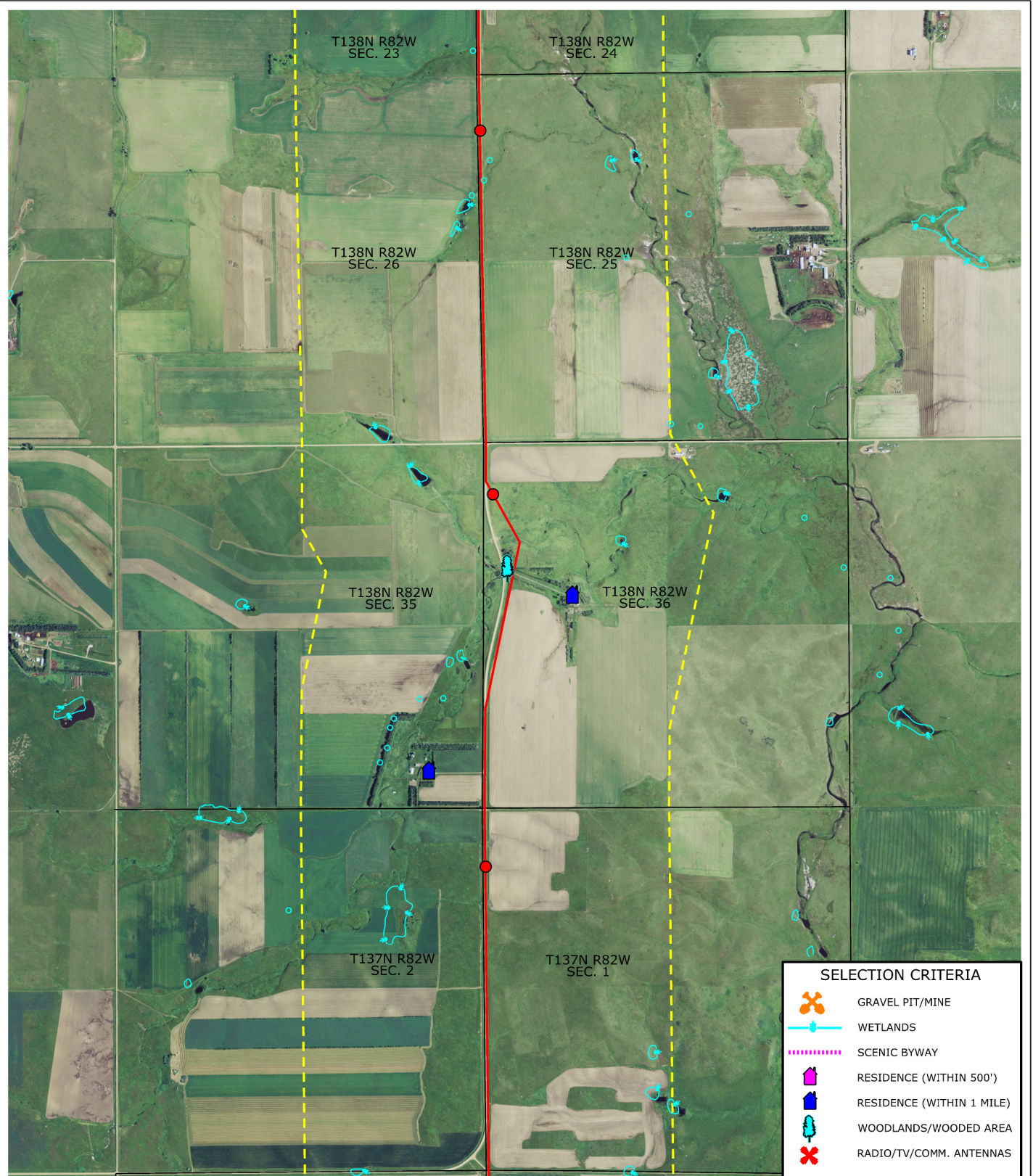
LEGEND	
	MILE POST
	BLOCK VALVE
	PROPOSED ROUTE
	1 MILE COORIDOR STUDY



Montana-Dakota Utilities Co.
Hesket Station
Natural Gas Pipeline Project
Selection Criteria

MAP 2 OF 7

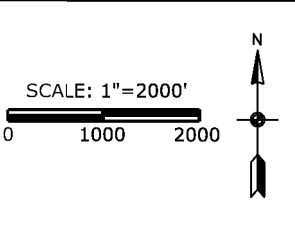
Montana-Dakota Utilities Co.
A Division of MDSU Resources Group, Inc.
In the Community to Serve



THIS INFORMATION IS FOR ENVIRONMENTAL REVIEW PURPOSES ONLY.

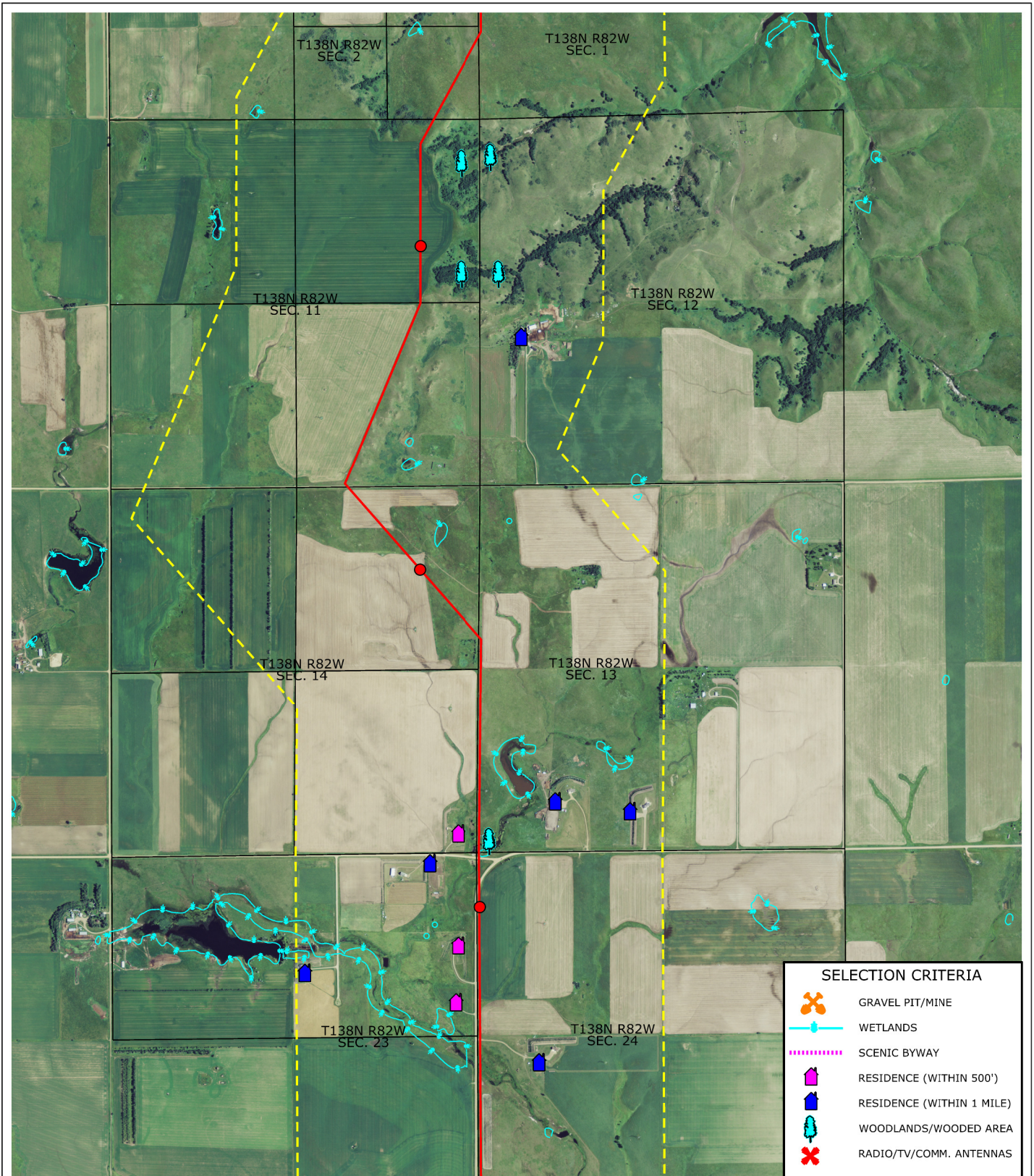
SELECTION CRITERIA	
	GRAVEL PIT/MINE
	WETLANDS
	SCENIC BYWAY
	RESIDENCE (WITHIN 500')
	RESIDENCE (WITHIN 1 MILE)
	WOODLANDS/WOODED AREA
	RADIO/TV/COMM. ANTENNAS

LEGEND	
	MILE POST
	BLOCK VALVE
	PROPOSED ROUTE
	1 MILE COORIDOR STUDY



Montana-Dakota Utilities Co.
 Heskett Station
 Natural Gas Pipeline Project
 Selection Criteria

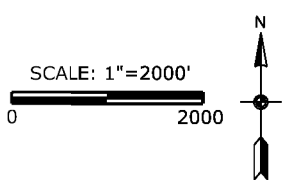
MAP 3 OF 7



THIS INFORMATION IS FOR ENVIRONMENTAL REVIEW PURPOSES ONLY.

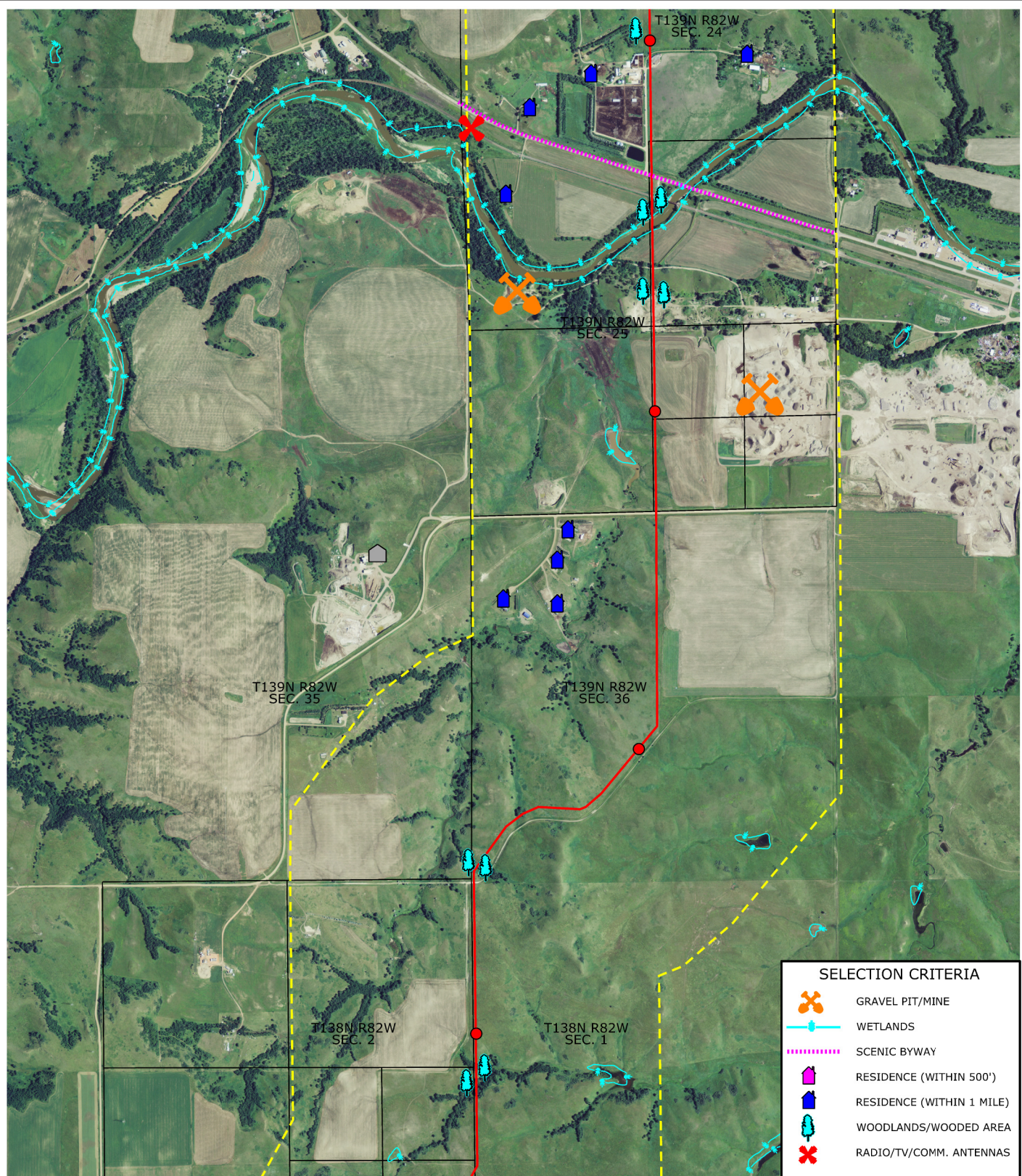
LEGEND

- MILE POST
- BLOCK VALVE
- PROPOSED ROUTE
- 1 MILE COORIDOR STUDY



Montana-Dakota Utilities Co.
Heskest Station
Natural Gas Pipeline Project
Selection Criteria

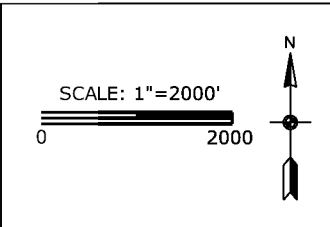




SELECTION CRITERIA	
	GRAVEL PIT/MINE
	WETLANDS
	SCENIC BYWAY
	RESIDENCE (WITHIN 500')
	RESIDENCE (WITHIN 1 MILE)
	WOODLANDS/WOODED AREA
	RADIO/TV/COMM. ANTENNAS

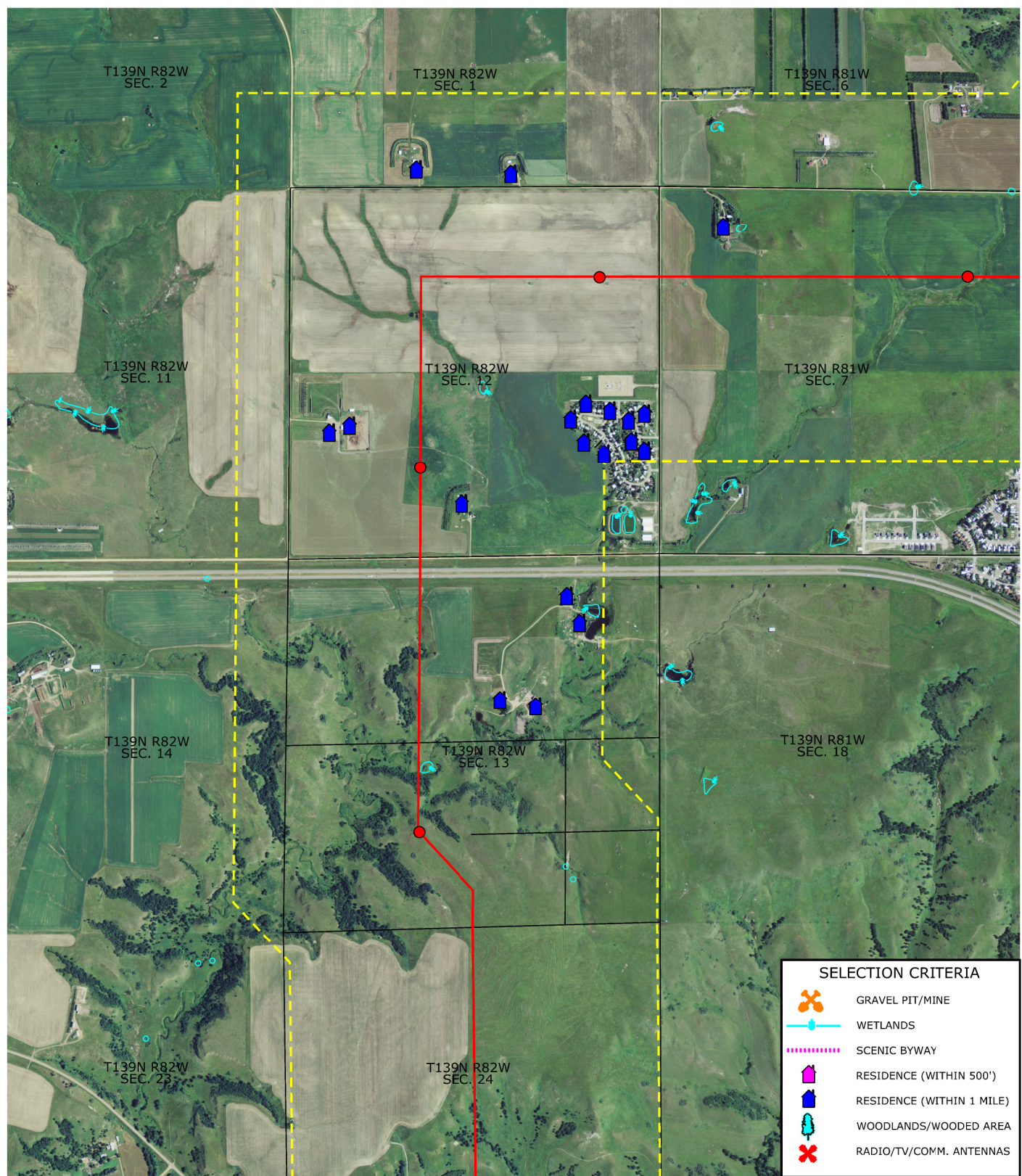
THIS INFORMATION IS FOR ENVIRONMENTAL REVIEW PURPOSES ONLY.

LEGEND	
	MILE POST
	BLOCK VALVE
	PROPOSED ROUTE
	1 MILE COORIDOR STUDY



Montana-Dakota Utilities Co.
Hesket Station
Natural Gas Pipeline Project
Selection Criteria

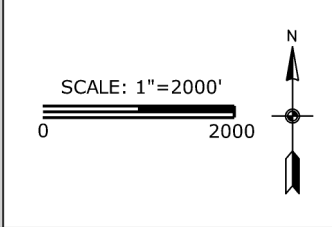
MAP 5 OF 7



SELECTION CRITERIA	
	GRAVEL PIT/MINE
	WETLANDS
	SCENIC BYWAY
	RESIDENCE (WITHIN 500')
	RESIDENCE (WITHIN 1 MILE)
	WOODLANDS/WOODED AREA
	RADIO/TV/COMM. ANTENNAS

THIS INFORMATION IS FOR ENVIRONMENTAL REVIEW PURPOSES ONLY.

LEGEND	
	MILE POST
	BLOCK VALVE
	PROPOSED ROUTE
	1 MILE CORRIDOR STUDY

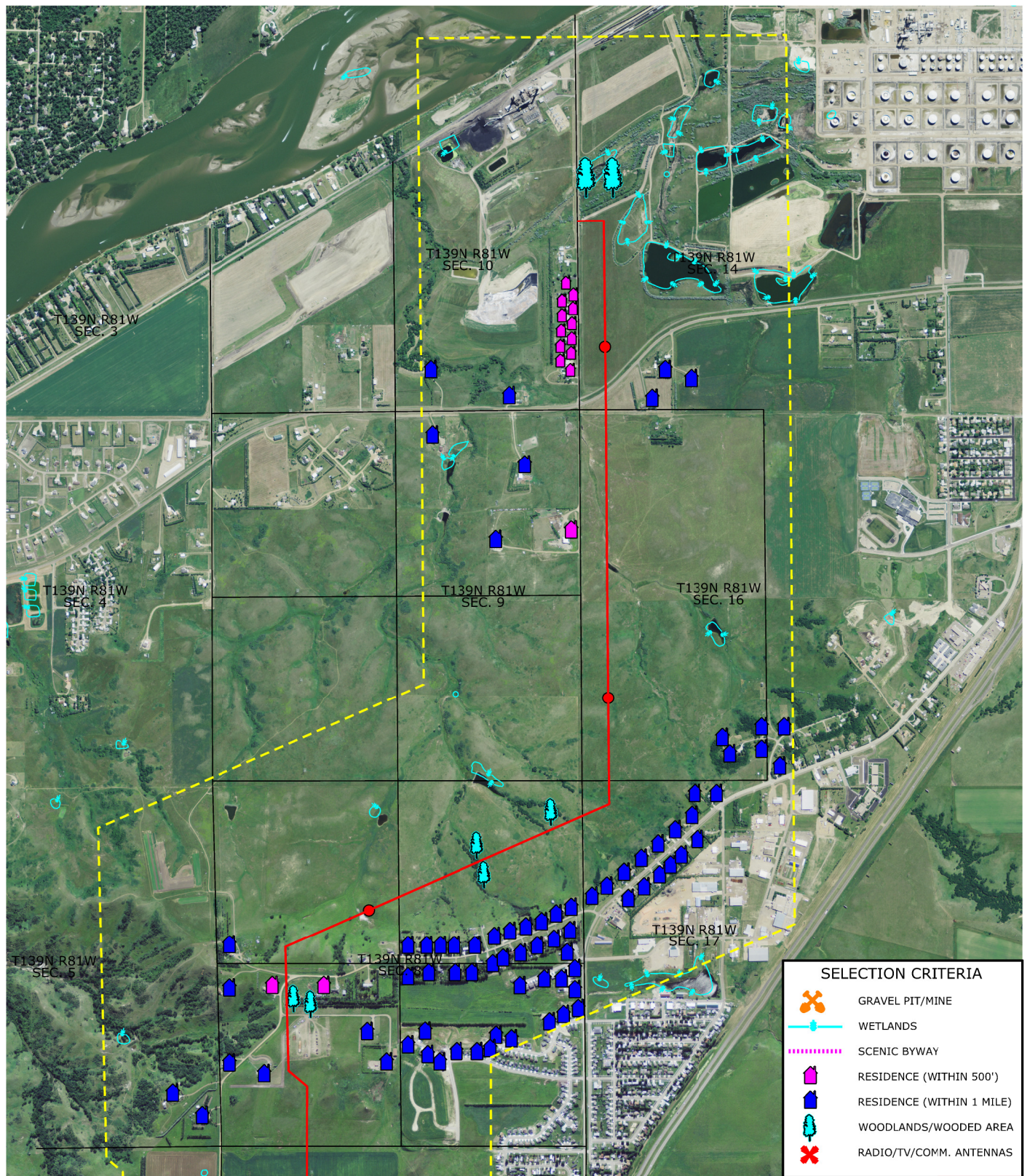


Montana-Dakota Utilities Co.
Heskett Station
Natural Gas Pipeline Project
Selection Criteria

MAP 6 OF 7

MONTANA-DAKOTA
UTILITIES CO.
A Division of MDU Resources Group, Inc.
In the Community to Serve

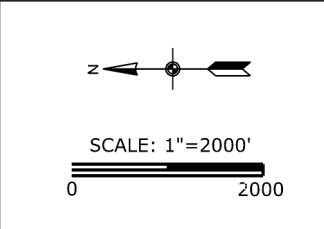
ProSource
TECHNICAL SERVICES



THIS INFORMATION IS FOR ENVIRONMENTAL REVIEW PURPOSES ONLY.

SELECTION CRITERIA	
	GRAVEL PIT/MINE
	WETLANDS
	SCENIC BYWAY
	RESIDENCE (WITHIN 500')
	RESIDENCE (WITHIN 1 MILE)
	WOODLANDS/WOODED AREA
	RADIO/TV/COMM. ANTENNAS

LEGEND	
	MILE POST
	BLOCK VALVE
	PROPOSED ROUTE
	1 MILE COORIDOR STUDY



Montana-Dakota Utilities Co.
 Heskett Station
 Natural Gas Pipeline Project
 Selection Criteria

MAP 7 OF 7

MONTANA-DAKOTA
 UTILITIES CO.
 A Division of MDU Resources Group, Inc.
In the Community to Serve®

ProSource
 TECHNOLOGY SERVICES