



MONTANA-DAKOTA

UTILITIES CO.

A Division of MDU Resources Group, Inc.

400 North Fourth Street
Bismarck, ND 58501
(701) 222-7900

September 9, 2013



Executive Secretary
ND Public Service Commission
State Capitol Building
Bismarck, ND 58505

Re: Heskett Station Natural Gas Pipeline
Case No. PU-11-680

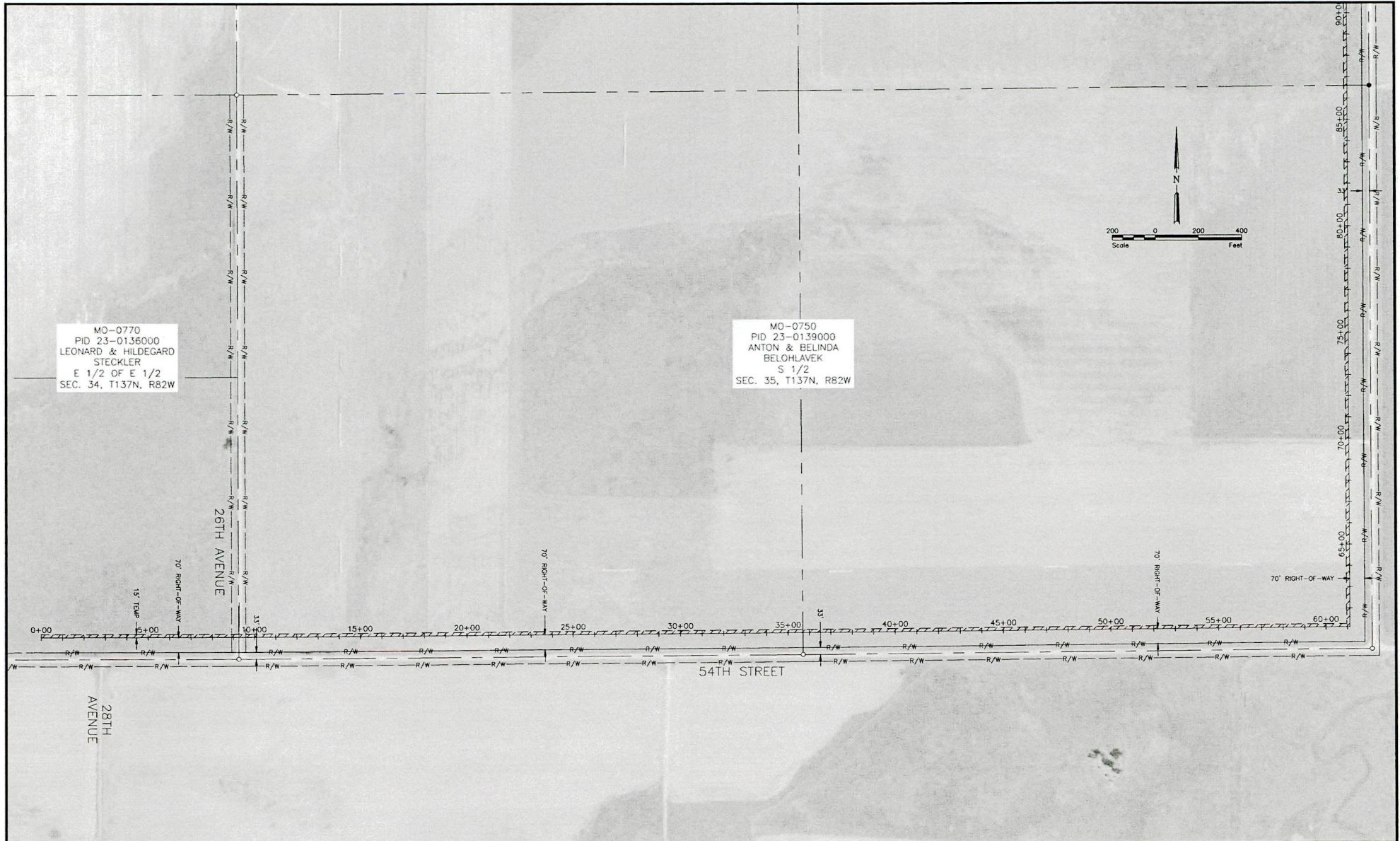
Montana-Dakota Utilities Co. (Montana-Dakota), a Division of MDU Resources Group, Inc., herewith electronically respectfully files its Pipeline Route Construction Sheets 1 through 20.

If you have any questions, please contact me at 701-222-7856 or tamie.aberle@mdu.com.

Sincerely,

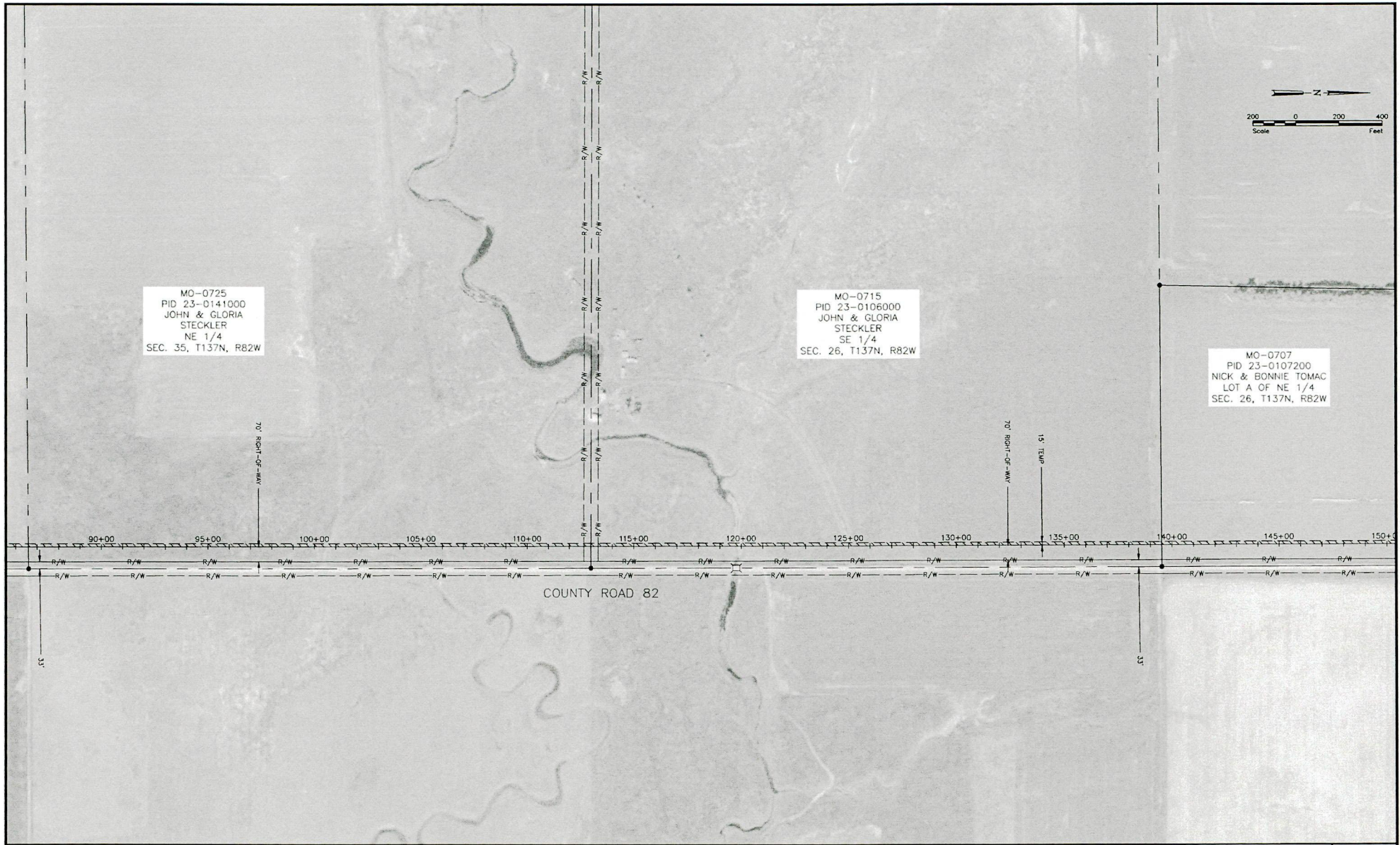
Tamie Aberle
Director of Regulatory Affairs

T:\1225-0000-Montana-Dakota-Utilities-Company\1225-01131-Archival-to-heskett\CAD\PLAN SET\PSD EASTMENT CORRIDOR PLANTASSEMENT CORRIDOR 9-8-11.dwg SHEET 1 OF 20 (1 of 20) (1 of 20)



No.	Revision	Date	By	<p>MONTANA-DAKOTA UTILITIES CO. A Division of MDU Resources Group, Inc. In the Community to Serve</p>	<p>Houston Engineering Inc.</p>	Bismarck P: 701.323.0200 F: 701.323.0500	Drawn by TKP	Date 9-8-13	MDU HESKETT STATION PIPELINE ROW ROUTE MONTANA-DAKOTA UTILITIES CO. MORTON COUNTY, NORTH DAKOTA	PIPELINE RIGHT-OF-WAY ROUTE PROJECT NO. 6125-011	SHEET 1 of 20
						Checked by SML	Scale AS SHOWN				

T:\112125-MDN-Montana-Dakota-Utilities-Company\6125-011-01-Addendum to Heskett\CAD\PLAN SET\PSD BASEMENT CORRIDOR 8-8-13.dwg -SHEET 2-08/2013 8:19 PM (1-in=4-in)



No.	Revision	Date	By

MONTANA-DAKOTA UTILITIES CO.
A Division of MDU Resources Group, Inc.
"In the Community to Serve"

Houston Engineering Inc.

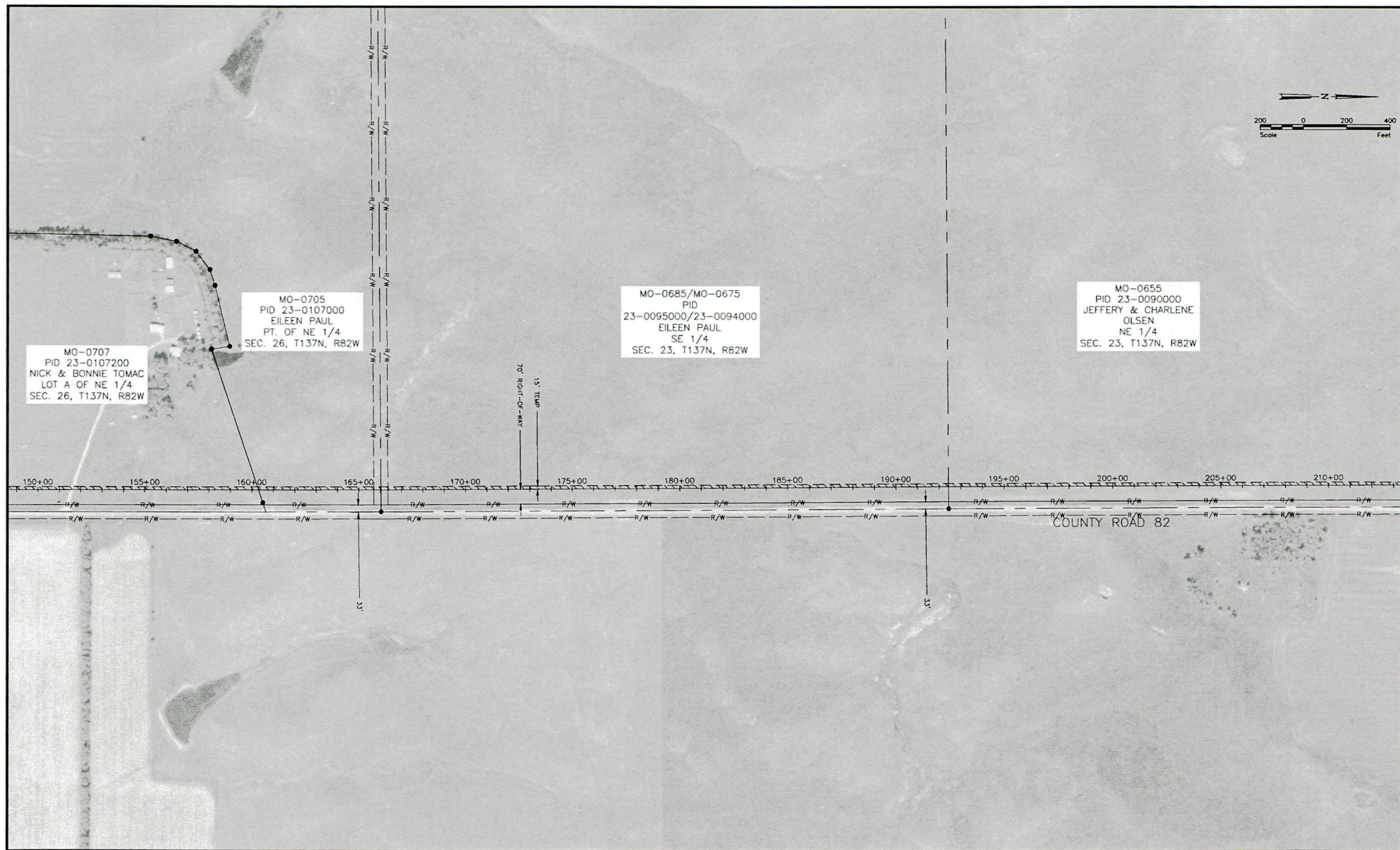
Bismarck	Drawn by TKP	Date 9-8-13
P: 701.323.0200 F: 701.323.0300	Checked by SML	Scale AS SHOWN

MDU HESKETT STATION PIPELINE ROW ROUTE
 MONTANA-DAKOTA UTILITIES CO.
 MORTON COUNTY, NORTH DAKOTA

PIPELINE RIGHT-OF-WAY ROUTE
 PROJECT NO. 6125-011

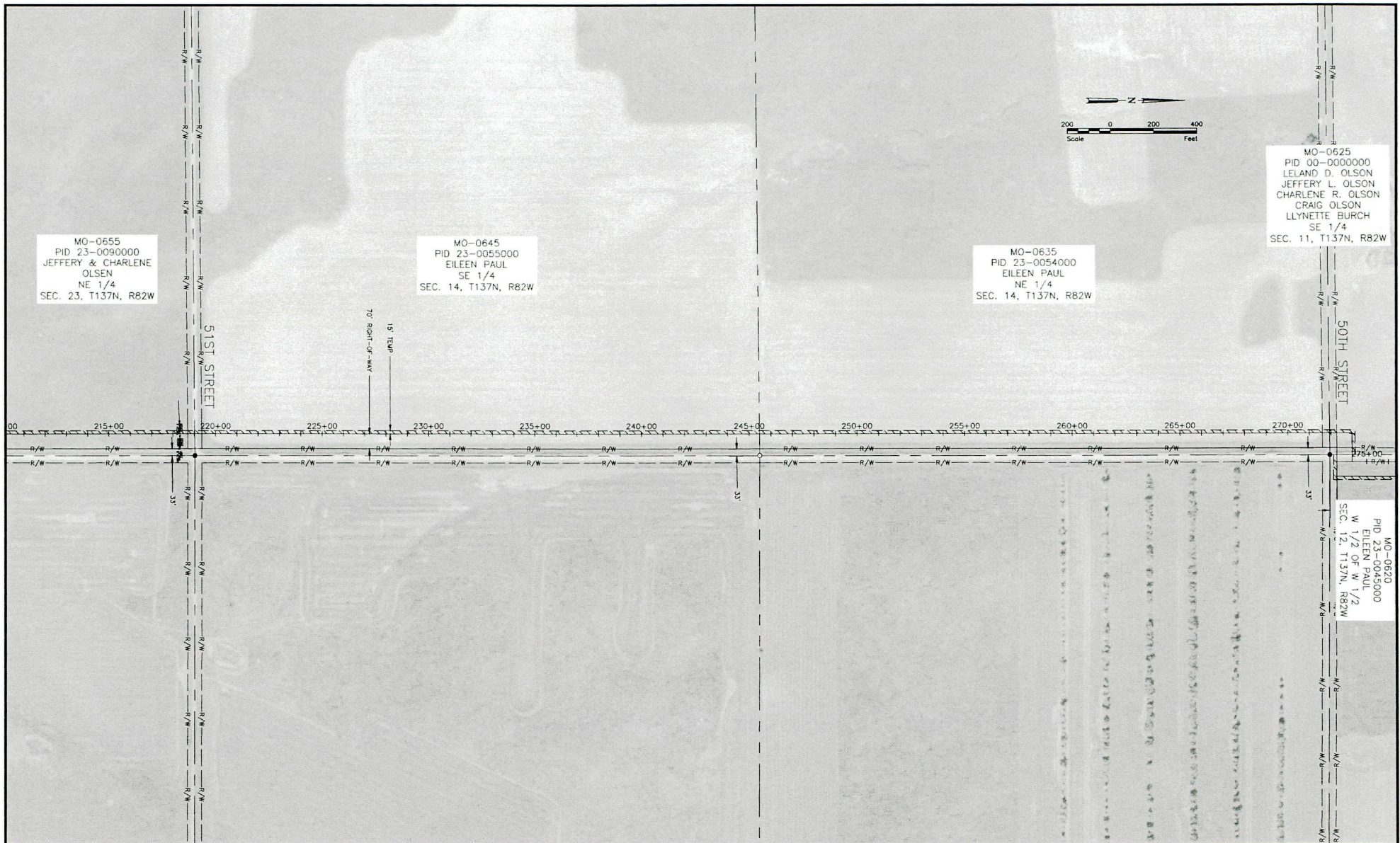
SHEET
 2 of 20

T:\1225-000-Montana-Dakota-Utilities-Company\6125-011-31-Station-to-Headert\CAD\PLAN SET\PIPE ELEMNT CORRIDOR PLAN SET\PIPE ELEMNT CORRIDOR 9-8-13.dwg SHEET 3 OF 20 6:13 PM (dlw/gls)



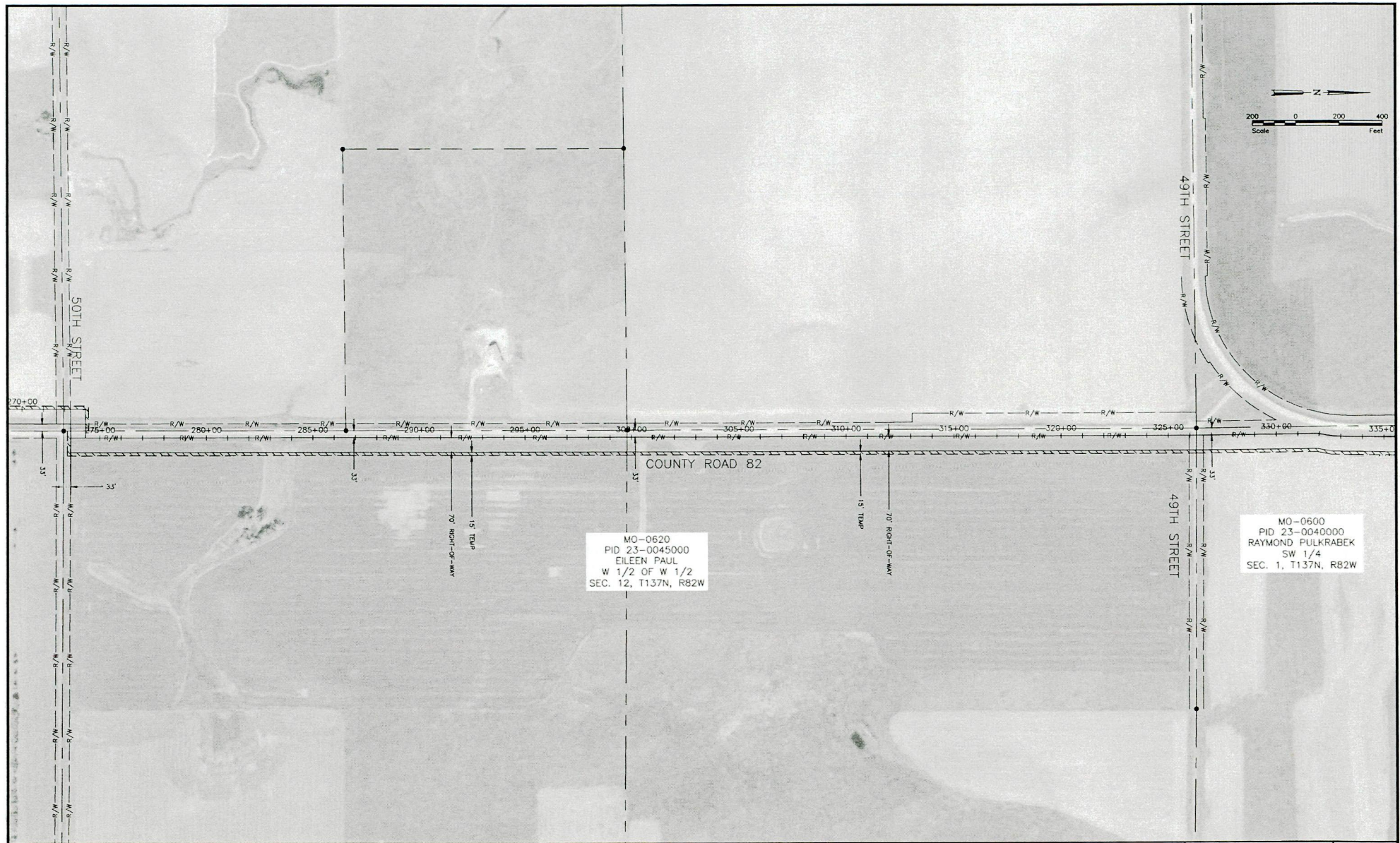
No.		Revision		Date	By	 MONTANA-DAKOTA UTILITIES CO. <small>A Division of MDU Resources Group, Inc.</small> <i>In the Community to Serve!</i>	 Houston Engineering Inc.	Bismarck		Drawn by TKP	Date 9-8-13	MDU HSKETT STATION PIPELINE ROW ROUTE MONTANA-DAKOTA UTILITIES CO. MORTON COUNTY, NORTH DAKOTA	PIPELINE RIGHT-OF-WAY ROUTE PROJECT NO. 6125-011	SHEET 3 of 20
P:		701.323.0200		Checked by SML				Scale AS SHOWN						

T:\1225-0000-Montana-Dakota-Utilities-Company\0125-01131-Authority-to-Install\0125-01131-KTP-SEC-0450-ROW-ROUTE-PLAN\ASSEMBLY-CORRIDOR-9-13-ROW-ROW-SHEET-4-9/9/2013 8:51 AM.dwg (r)



No.	Revision	By	 MONTANA-DAKOTA UTILITIES CO. <small>A Division of MDU Resources Group, Inc.</small> <i>In the Community to Serve</i>	 Houston Engineering Inc.	Bismarck	Drawn by TKP, RVB	Date 9-9-13	MDU HESKETT STATION PIPELINE ROW ROUTE MONTANA-DAKOTA UTILITIES CO. MORTON COUNTY, NORTH DAKOTA	PIPELINE RIGHT-OF-WAY ROUTE PROJECT NO. 6125-011	SHEET 4 of 20
					P: 701.323.0200 F: 701.323.0300	Checked by SML	Scale AS SHOWN			

T:\0125-0000-Montana-Dakota-Utilities-Corps\0125-0011-01-15-Station-to-Heskett\CAD\PLAN SET\PIPELINE ROW ROUTE PLAN\ASSEMBLY CORRIBORR 18-11 RWB.dwg SHEET 5-09/2013 8.41 PM (jblawrnt)



MO-0620
PID 23-0045000
EILEEN PAUL
W 1/2 OF W 1/2
SEC. 12, T137N, R82W

MO-0600
PID 23-0040000
RAYMOND PULKRABEK
SW 1/4
SEC. 1, T137N, R82W

No.	Revision	By	 MONTANA-DAKOTA UTILITIES CO. <small>A Division of MDU Resources Group, Inc.</small> <i>"In the Community to Serve"</i>	 Houston Engineering Inc.	Bismarck	Drawn by TKP, RVB	Date 9-8-13	MDU HESKETT STATION PIPELINE ROW ROUTE MONTANA-DAKOTA UTILITIES CO. MORTON COUNTY, NORTH DAKOTA	PIPELINE RIGHT-OF-WAY ROUTE PROJECT NO. 6125-011	SHEET 5 of 20
					P: 701.323.0200 F: 701.323.0500	Checked by SML	Scale AS SHOWN			

T:\122-0000\Montana Dakota Utilities Company\6125-01131_Archival to Heskett\CD\PLAN SET\SEC GASMAIN CORRIDOR 9-8-13_PWB.dwg SHEET 9-8/2013 8:39 PM (6/24/2014)



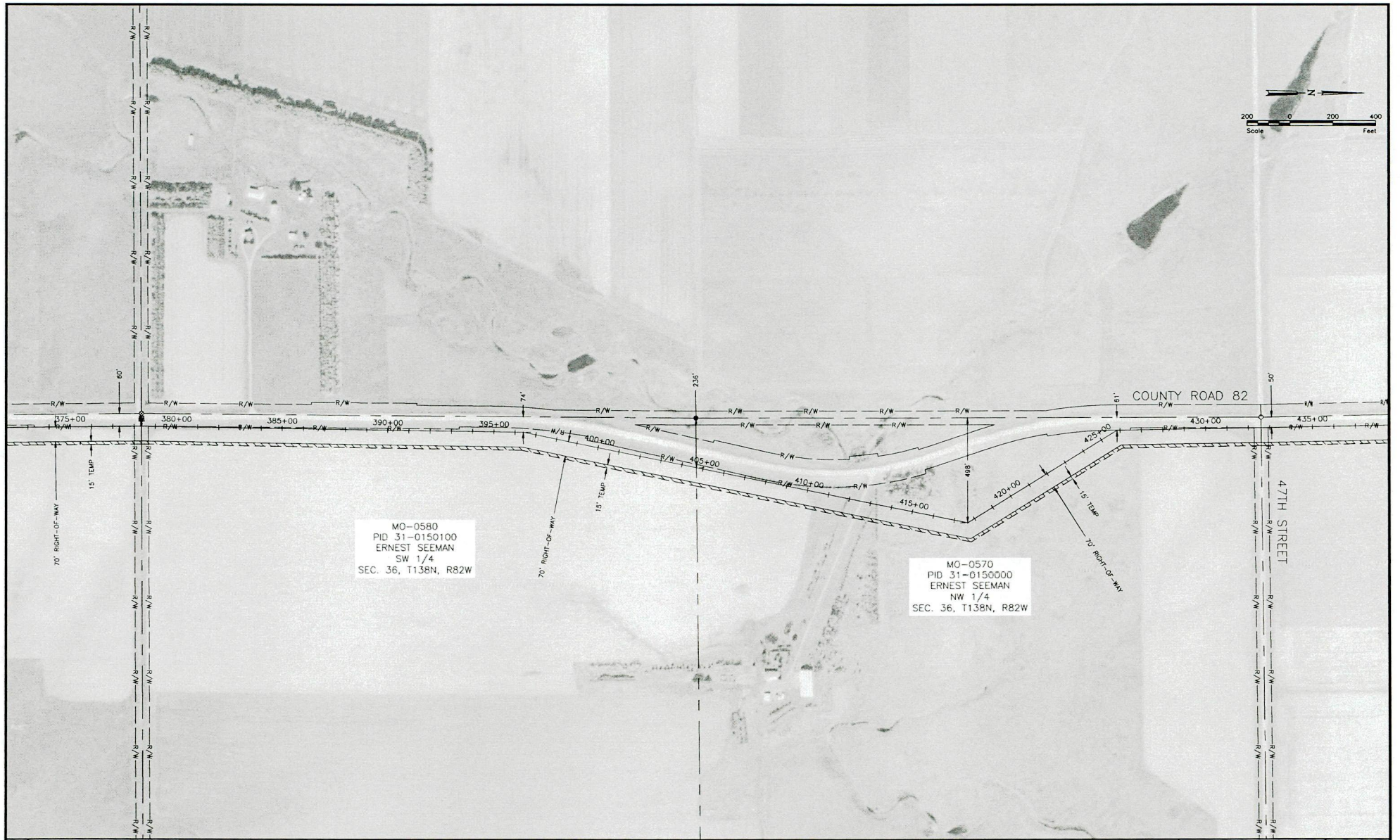
MO-0600
PID 23-0040000
RAYMOND PULKRABEK
SW 1/4
SEC. 1, T137N, R82W

MO-0590
PID 23-0005000
RAYMOND PULKRABEK
NW 1/4
SEC. 1, T137N, R82W

MO-0580
PID 31-0150100
ERNEST SEEMAN
SW 1/4
SEC. 36, T138N, R82W

No.	Revision	By	<p>MONTANA-DAKOTA UTILITIES CO. A Division of MDU Resources Group, Inc. In the Community to Serve!</p>	<p>Houston Engineering Inc.</p>	Bismarck	Drawn by TKP, RVB	Date 9-8-13	MDU HESKETT STATION PIPELINE ROW ROUTE MONTANA-DAKOTA UTILITIES CO. MORTON COUNTY, NORTH DAKOTA	PIPELINE RIGHT-OF-WAY ROUTE PROJECT NO. 6125-011	SHEET 6 of 20
					P: 701.323.0200 F: 701.323.0300	Checked by SML	Scale AS SHOWN			

T:\1135-000-Montana-Dakota-Utilities-Company\6125-011-15-Arch\Drawings\CD\PLAN\NET\516 BASEMENT CONDUIT PLAN BASEMENT CONDUIT 8-13 1/8.dwg SHEET 7 NW/2013 8:30 PM (4/15/14)



MO-0580
PID 31-0150100
ERNEST SEEMAN
SW 1/4
SEC. 36, T138N, R82W

MO-0570
PID 31-0150000
ERNEST SEEMAN
NW 1/4
SEC. 36, T138N, R82W

No	Revision	By	<p>MONTANA-DAKOTA UTILITIES CO. A Division of MDU Resources Group, Inc. <i>In the Community to Serve</i></p>	<p>Houston Engineering Inc.</p>	Bismarck	Drawn by TKP, RVB	Date 9-8-13	MDU HESKETT STATION PIPELINE ROW ROUTE MONTANA-DAKOTA UTILITIES CO. MORTON COUNTY, NORTH DAKOTA	PIPELINE RIGHT-OF-WAY ROUTE PROJECT NO. 6125-011	SHEET 7 of 20
					P: 701.323.0200 F: 701.323.0300	Checked by SML	Scale AS SHOWN			

T:\1125-000-Montana-Dakota-Utilities-Company\6125-011-01-1-1-Archives-to-Heskett\CAD\DWG-AS-SET\PIPELINE CORRIDOR PLAN\REVISION CORRIDOR 9-8-13 RWB.dwg SHEET 9-8-13 6:37 PM (dhsu41)

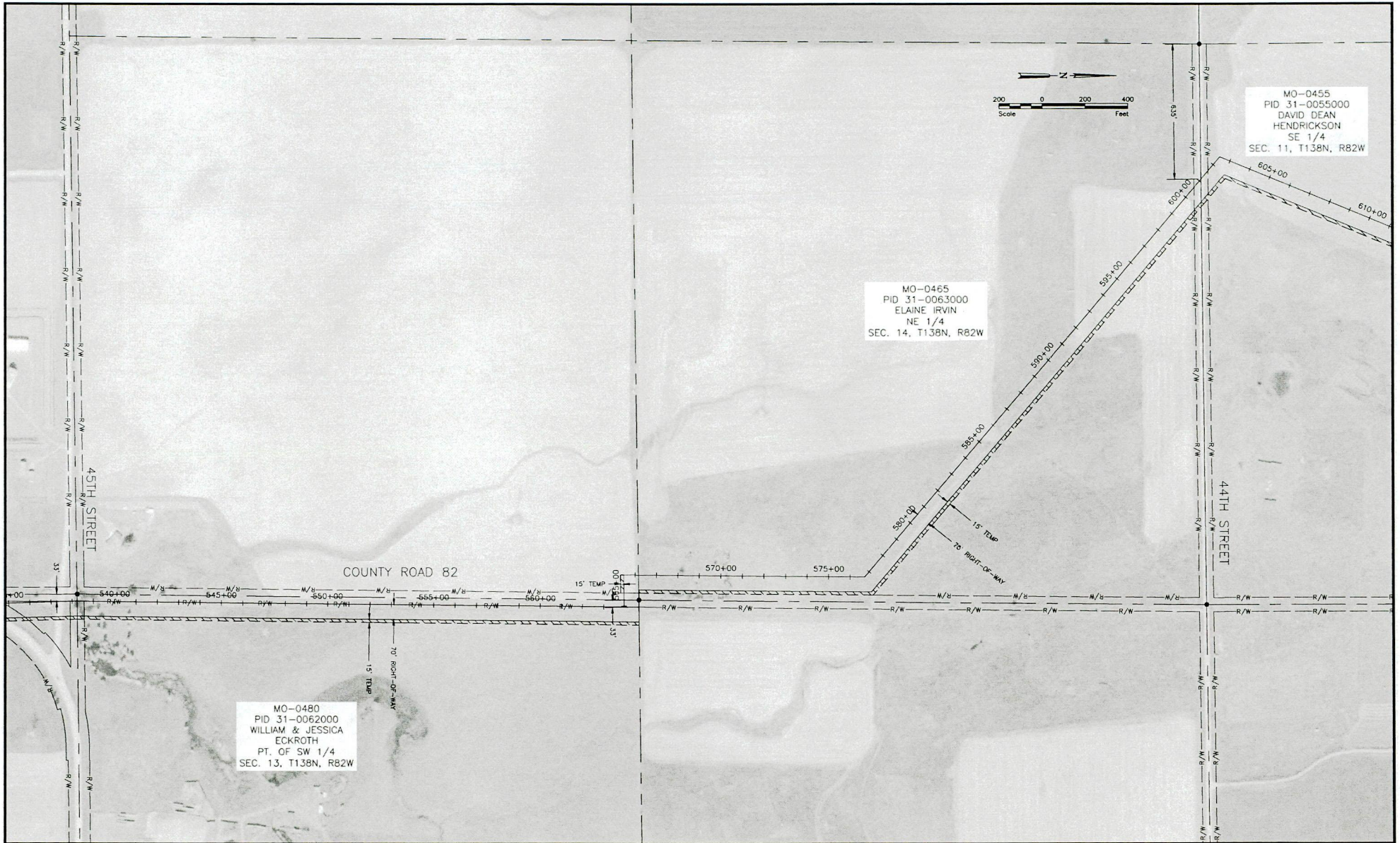


MO-0520
 PID 31-0103000
 DEAN & RHONDA
 BREUER
 SW 1/4
 SEC. 24, T138N, R82W

MO-0510
 PID 31-0104000
 ALICE SCHWARTZBAUER
 NW 1/4
 SEC. 24, T138N, R82W

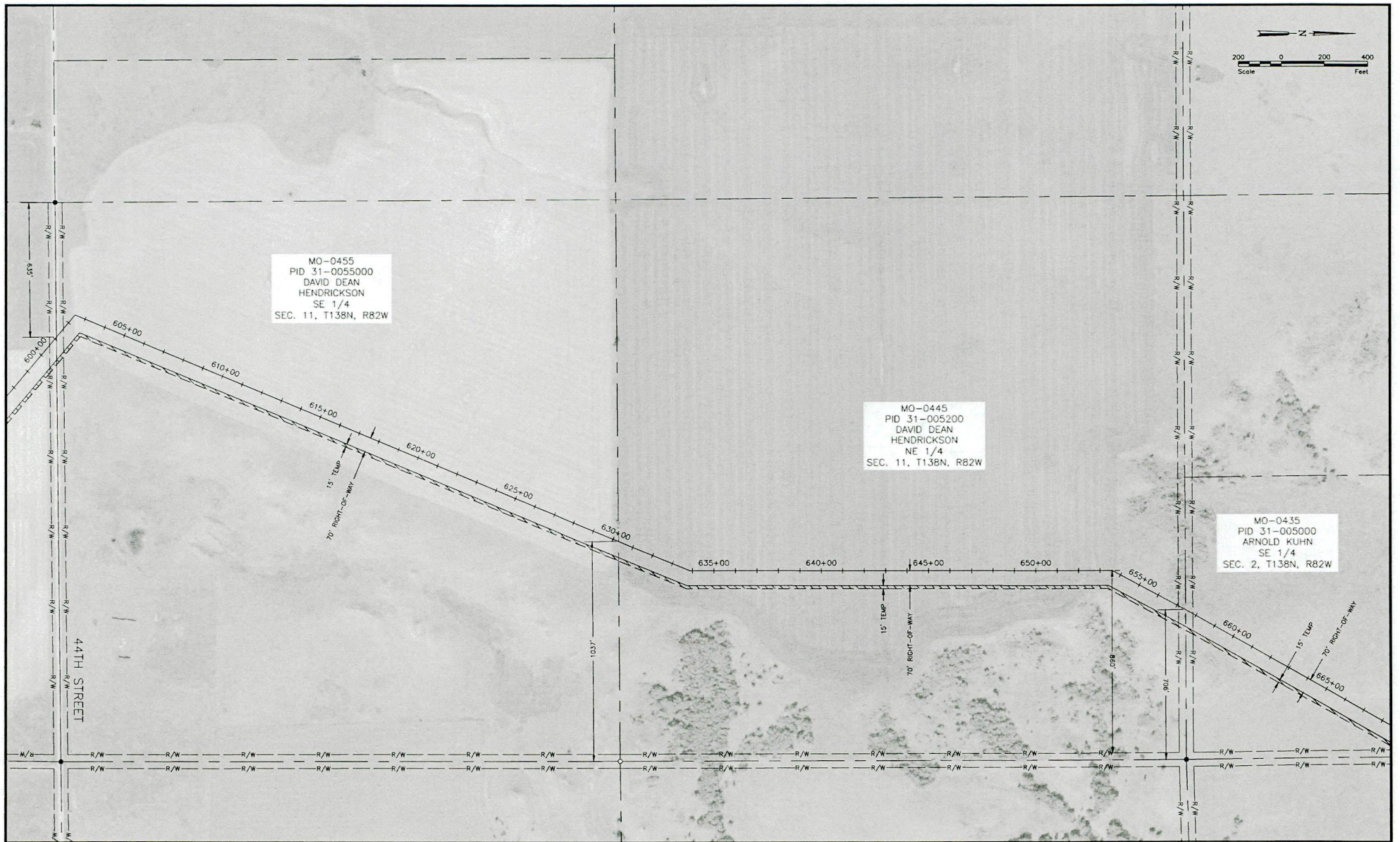
No.	Revision	By	MONTANA-DAKOTA UTILITIES CO. <small>A Division of MDU Resources Group, Inc.</small> <i>In the Community to Serve</i>	Houston Engineering Inc.	Bismarck	Drawn by TKP, RVB Date 9-8-13	MDU HESKETT STATION PIPELINE ROW ROUTE MONTANA-DAKOTA UTILITIES CO. MORTON COUNTY, NORTH DAKOTA	PIPELINE RIGHT-OF-WAY ROUTE PROJECT NO. 6125-011	SHEET 9 of 20
					P: 701.323.0200 F: 701.323.0500	Checked by SML Scale AS SHOWN			

T:\1212-000-Montana-Dakota-Utilities-Company\01212-011-15-Authority-to-Heskettt\CAD\PLANS\SET\505-62500\CONCORDIA-PLAN\ASSEMBLY\CONCORDIA-PLAN-ASSEMBLY-CONCORDIA-9-8-13-RW.dwg SHEET 10-26/2013 6:48:46 (Rls:amr)



No.	Revision	By	 MONTANA-DAKOTA UTILITIES CO. <small>A Division of MDU Resources Group, Inc.</small> <i>"In the Community to Serve"</i>	 Houston Engineering Inc.	Bismarck	Drawn by TKP, RVB	Date 9-8-13	MDU HESKETT STATION PIPELINE ROW ROUTE MONTANA-DAKOTA UTILITIES CO. MORTON COUNTY, NORTH DAKOTA	PIPELINE RIGHT-OF-WAY ROUTE PROJECT NO. 6125-011	SHEET 10 of 20
					P: 701.323.0200 F: 701.323.0300	Checked by SML	Scale AS SHOWN			



T:\6125-000\Montana-Dakota Utilities Company\6125-0113-01_Authority to Heskett\CAD\PLAN SET\PIPELINES\CORRIDOR PLAN\BASEMENT CORRIDOR 9-8-13 ROW.dwg, SHEET 11-09/2013 6:47 PM (bluamr)



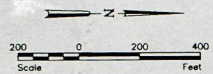
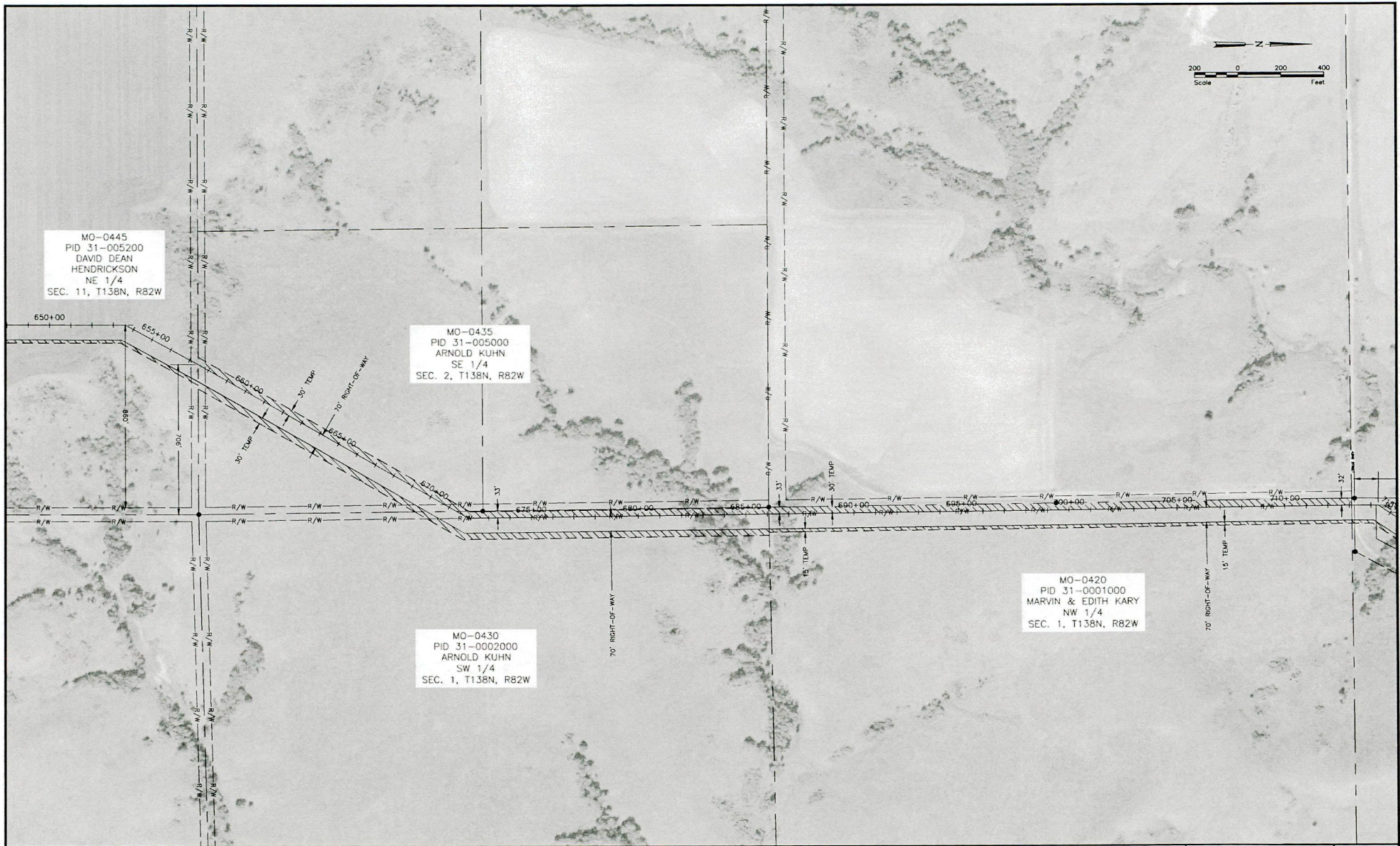
MO-0455
PID 31-0055000
DAVID DEAN
HENDRICKSON
SE 1/4
SEC. 11, T138N, R82W

MO-0445
PID 31-005200
DAVID DEAN
HENDRICKSON
NE 1/4
SEC. 11, T138N, R82W

MO-0435
PID 31-005000
ARNOLD KUHN
SE 1/4
SEC. 2, T138N, R82W

No.	Revision	By	 MONTANA-DAKOTA UTILITIES CO. <small>A Division of SDU Resources Group, Inc.</small> <i>"In the Community to Serve"</i>	 Houston Engineering Inc.	Bismarck	Drawn by TKP, RVB	Date 9-8-13	MDU HESKETT STATION PIPELINE ROW ROUTE MONTANA-DAKOTA UTILITIES CO. MORTON COUNTY, NORTH DAKOTA	PIPELINE RIGHT-OF-WAY ROUTE PROJECT NO. 6125-011	SHEET 11 of 20
					P: 701.323.0200 F: 701.323.0500	Checked by SML	Scale AS SHOWN			

T:\6125-000\Montana-Dakota Utilities Company\6125-011 56. Bismarck to Heskett\CAD\PLAN SET\TYPE ELEMENT CORRIDOR PLAN\ELEMENT CORRIDOR 9-8-13 ROW.dwg, SHEET 12 OF 1013 & 110-MD-UTL-0011



MO-0445
PID 31-005200
DAVID DEAN
HENDRICKSON
NE 1/4
SEC. 11, T138N, R82W

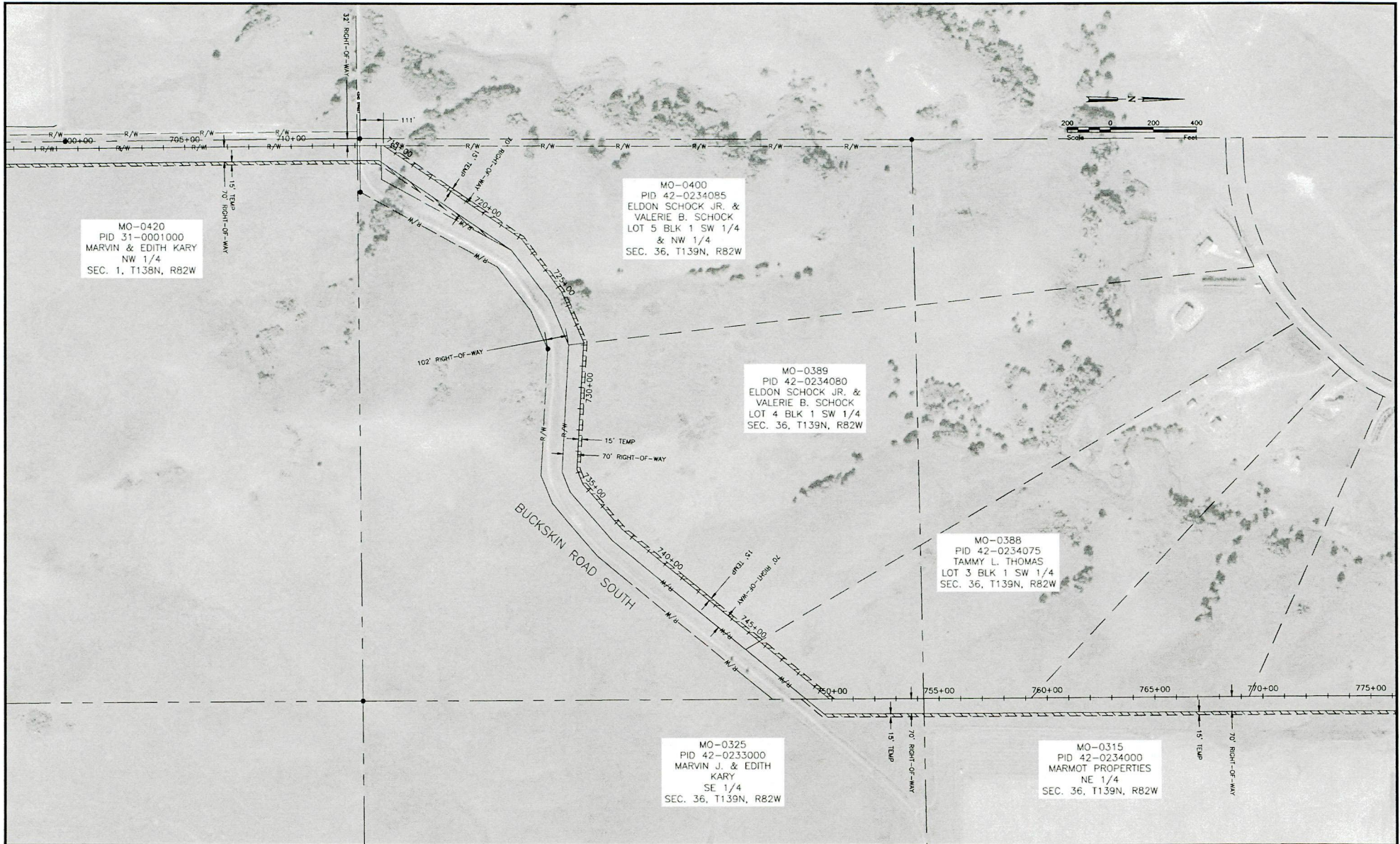
MO-0435
PID 31-005000
ARNOLD KUHN
SE 1/4
SEC. 2, T138N, R82W

MO-0430
PID 31-0002000
ARNOLD KUHN
SW 1/4
SEC. 1, T138N, R82W

MO-0420
PID 31-0001000
MARVIN & EDITH KARY
NW 1/4
SEC. 1, T138N, R82W

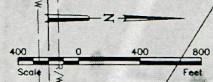
No.	Revision	By	 MONTANA-DAKOTA UTILITIES CO. <small>A Division of MDU Resources Group, Inc.</small> <i>In the Community to Serve</i>	 Houston Engineering Inc.	Bismarck	Drawn by TKP, RVB	Date 9-9-13	MDU HESKETT STATION PIPELINE ROW ROUTE MONTANA-DAKOTA UTILITIES CO. MORTON COUNTY, NORTH DAKOTA	PIPELINE RIGHT-OF-WAY ROUTE PROJECT NO. 6125-011	SHEET 12 of 20
					P: 701.323.0200 F: 701.323.0300	Checked by SML	Scale AS SHOWN			

T:\6125-000-Montana-Dakota-Utilities-Company\6125-011-31-Authority-to-Heskettt-Station-Pipeline-Corridor-Plan-Placement-Corridor-9-4-17-Reg_SHEET 13 OF 20\1316 54 PM (10/26/14)



No.	Revision	Date	By	<p>MONTANA-DAKOTA UTILITIES CO. A Division of MDU Resources Group, Inc. "In the Community to Serve"</p>	<p>Houston Engineering Inc.</p>	<p>Bismarck</p> <p>P: 701.323.0200 F: 701.323.0300</p>	<p>Drawn by TKP</p> <p>Checked by SML</p>	<p>Date 9-8-13</p> <p>Scale AS SHOWN</p>	<p>MDU HESKETT STATION PIPELINE ROW ROUTE MONTANA-DAKOTA UTILITIES CO. MORTON COUNTY, NORTH DAKOTA</p>	<p>PIPELINE RIGHT-OF-WAY ROUTE PROJECT NO. 6125-011</p>	<p>SHEET 13 of 20</p>

T:\0125-0000-Montana-Dakota Utilities Company\6125-011-01-11-Arch\Drawings\MDU\AK SET\PIPE ROW\ASSETMENT CORRIDOR PLAN\ASSETMENT CORRIDOR 9-8-13.dwg SHEET 14 OF 20 (11-13-13 PM) (jmg/gm)



MO-0350
PID 42-0168000
PAUL TRAUGER
NE 1/4
SEC. 25, T139N, R82W

MO-0315
PID 42-0234000
MARMOT PROPERTIES
NE 1/4
SEC. 36, T139N, R82W

MO-0305
PID 42-0162000
BAUERLY BROTHERS
INC.
SW 1/4 OF SE 1/4
SEC. 25, T139N, R82W

MO-0290
PID 42-0152000
PAUL TRAUGER
PT. NE 1/4
SEC. 25, T139N, R82W

MO-0285
PID 42-0146000
DOUGLAS PLUMMER
SE 1/4
SEC. 24, T139N, R82W

No.	Revision	Date	By

MONTANA-DAKOTA
UTILITIES CO.
A Division of MDU Resources Group, Inc.
"In the Community to Serve"

Houston
Engineering Inc.

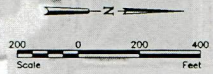
Bismarck	Drawn by TKP	Date 9-8-13
P: 701.323.0200 F: 701.323.0300	Checked by SML	Scale AS SHOWN

MDU HESKETT STATION PIPELINE ROW ROUTE
MONTANA-DAKOTA UTILITIES CO.
MORTON COUNTY, NORTH DAKOTA

PIPELINE RIGHT-OF-WAY ROUTE
PROJECT NO. 6125-011

SHEET
14 of 20

T:\161215-000-Montana-Dakota-Utilities-Company\0125-0115-Authority-to-Heskettt\CD\PLAN-SET\SPEC-BASIS\PIPELINE-CORRIDOR-PLAN-BASIS\DRAWING-CORRIDOR-PLAN-SHEET-16-09\2013-08-13-DWG-SHEET-16-09\2013-08-13-DWG-SHEET-16-09.dwg



MO-0250
PID 42-0087000
JOE A. & JAN R.
VOGEL TRUST
W 1/2
SEC. 13, T139N, R82W

MO-0220
PID 42-0086000
KEITH & MARLYS
LANDEIS
SW 1/4
SEC. 12, T139N, R82W

MO-0210
PID 42-0085000
MARVIN BOEHM
NW 1/4
SEC. 12, T139N, R82W

No.	Revision	Date	By

MONTANA-DAKOTA
UTILITIES CO.
A Division of MDU Resources Group, Inc.
"In the Community to Serve"

Houston
Engineering Inc.

Bismarck	Drawn by TKP	Date 9-8-13
P: 701.323.0200 F: 701.323.0300	Checked by SML	Scale AS SHOWN

MDU HESKETT STATION PIPELINE ROW ROUTE
MONTANA-DAKOTA UTILITIES CO.
MORTON COUNTY, NORTH DAKOTA

PIPELINE RIGHT-OF-WAY
ROUTE
PROJECT NO. 6125-011

SHEET
16 of 20

T:\6125-000\Montana-Dakota Utilities Company\6125-011-01- Authority to Heskett\24th Avenue SET/SEC EASTMENT CORRIDOR 8-8-13.dwg - SHEET 17-N/2013 6:09 PM (4/8/14)



No.	Revision	Date	By



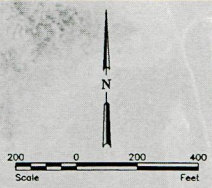
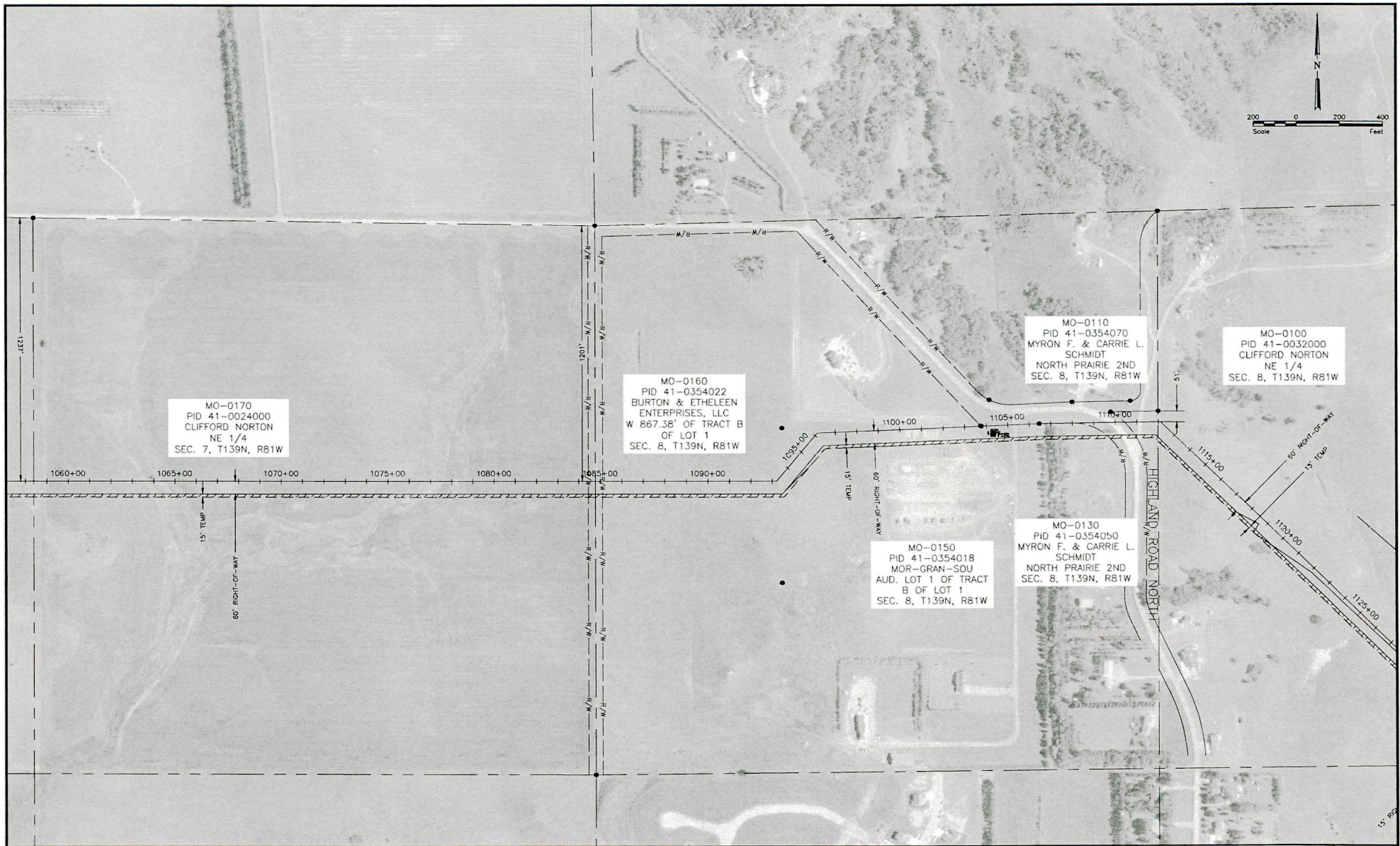
Bismarck	Drawn by TKP	Date 9-8-13
P: 701.323.0200 F: 701.323.0200	Checked by SML	Scale AS SHOWN

MDU HESKETT STATION PIPELINE ROW ROUTE
MONTANA-DAKOTA UTILITIES CO.
MORTON COUNTY, NORTH DAKOTA

PIPELINE RIGHT-OF-WAY ROUTE
PROJECT NO. 6125-011

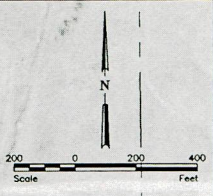
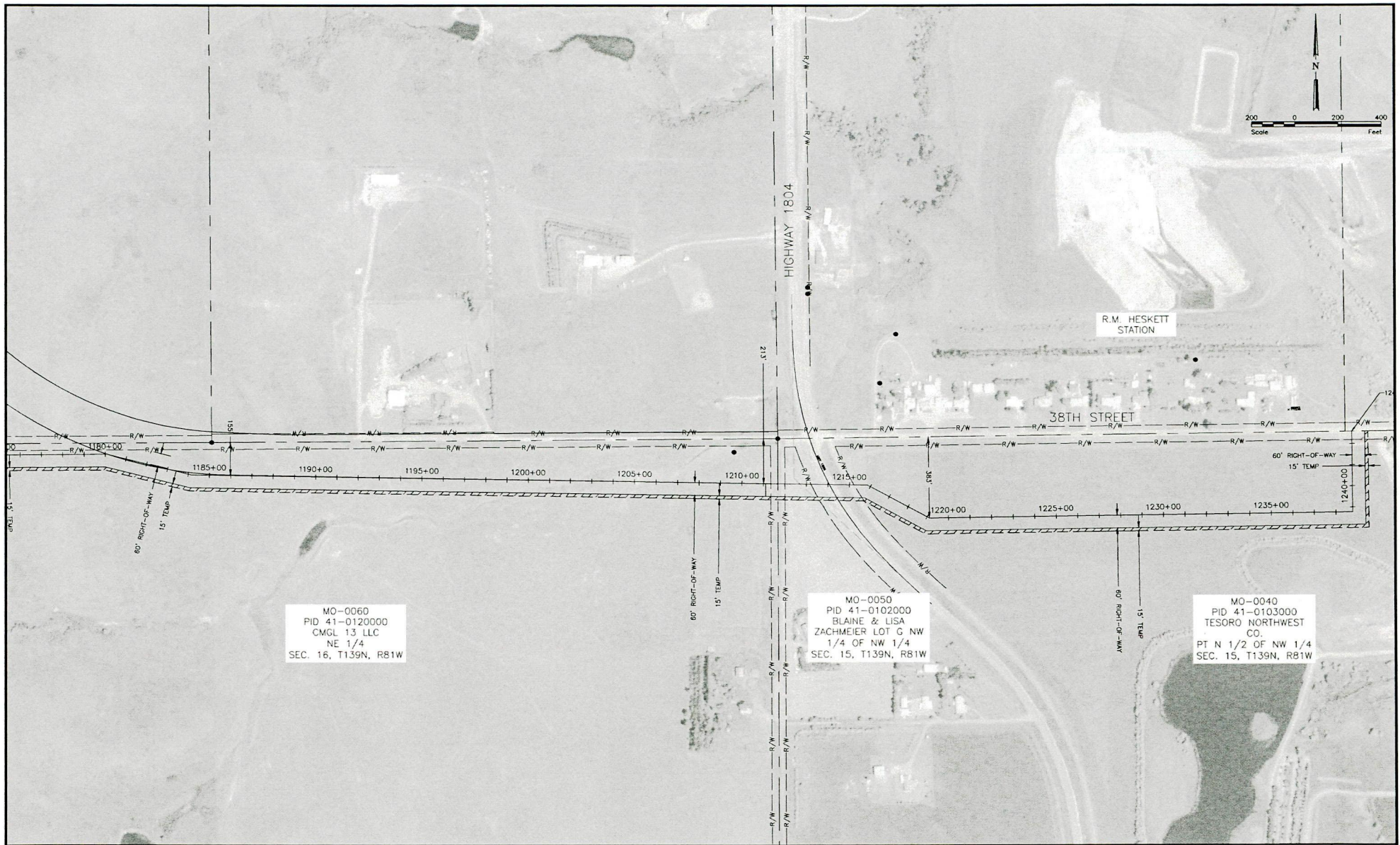
SHEET
17 of 20

T:\1125-000-Montana-Dakota Utilities Company\6125-0113 St. Anthony to Heskett\CAD\PLAN SET\PIPE ELEMNT CORRIDOR PLAN\ELEMENT CORRIDOR 9-8-13.dwg - SHEET 18 OF 20 (3) 6/8 PM (4/24/14)



No.		Revision		Date	By	<p>MONTANA-DAKOTA UTILITIES CO. A Division of MDU Resources Group, Inc. <i>In the Community to Serve</i></p>	<p>Houston Engineering Inc.</p>	Bismarck P: 701.323.0200 F: 701.323.0500	Drawn by TKP Checked by SML	Date 9-8-13 Scale AS SHOWN	MDU HESKETT STATION PIPELINE ROW ROUTE MONTANA-DAKOTA UTILITIES CO. MORTON COUNTY, NORTH DAKOTA	PIPELINE RIGHT-OF-WAY ROUTE PROJECT NO. 6125-011	SHEET 18 of 20

T:\12135-000-Montana-Dakota Utilities Company\12135-011-01-01-01-Authority to Heskett\CAD\PLAN SET\PIPELINES CORRIDOR PLAN\ASSESSMENT CORRIDOR 8-13.dwg - SHEET 20 OF 20 (7/24/14) (14x11) (pl)



MO-0060
PID 41-0120000
CMGL 13 LLC
NE 1/4
SEC. 16, T139N, R81W

MO-0050
PID 41-0102000
BLAINE & LISA
ZACHMEIER LOT G NW
1/4 OF NW 1/4
SEC. 15, T139N, R81W

MO-0040
PID 41-0103000
TESORO NORTHWEST
CO.
PT N 1/2 OF NW 1/4
SEC. 15, T139N, R81W

No.	Revision	Date	By

MONTANA-DAKOTA UTILITIES CO.
A Division of MDU Resources Group, Inc.
In the Community to Serve

Houston Engineering Inc.

Bismarck	Drawn by TKP	Date 9-9-13
P: 701.323.0200 F: 701.323.0300	Checked by SML	Scale AS SHOWN

MDU HESKETT STATION PIPELINE ROW ROUTE
MONTANA-DAKOTA UTILITIES CO.
MORTON COUNTY, NORTH DAKOTA

PIPELINE RIGHT-OF-WAY ROUTE
PROJECT NO. 6125-011

SHEET
20 of 20